



# What Makes Successful National Research Infrastructure?

## National Collaborative Research Infrastructure Strategy (NCRIS):

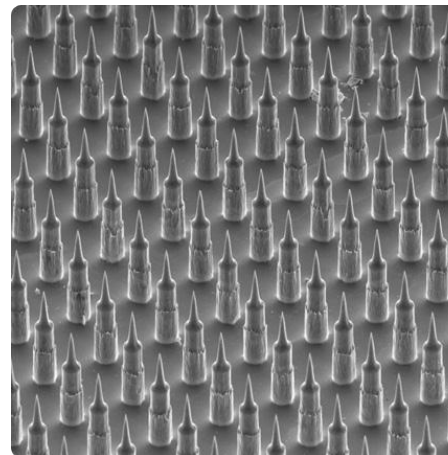
- Capability Focus
- Sector Driven Process
- Roadmapping of Needs and Gaps
- Governance Flexibility



# Australian Microscopy and Microanalysis Research Facility

- National Networked Facility
- Tangible collaborative outcomes already produced nationally - nanopatch
- Developed and expanding Collaborative Links with EuroBioImaging

Wattle pollen grains



Nanopatch delivers vaccines painlessly and efficiently without refrigeration



## Australia's Experiences

Feasible and beneficial to deliver collaborative research infrastructure crossing geographical, institutional and jurisdictional boundaries

Vital to recognise the importance of the development of e-Infrastructure and integration of access to data across national and international networks.

Australia looks forward to participating in the development of international approaches to research infrastructures