



**eHealth**  
week

11 - 13 MAY 2015  
RIGA, LATVIA

ORGANISED BY

Ministry of Health  
of the Republic of Latvia



# E-HEALTH IN UNIVERSITY HOSPITAL

Ieva Vitola

Pauls Stradins clinical university hospital

Follow us  @eHealthWeekEU #eHW15



# Pauls Stradins clinical university hospital

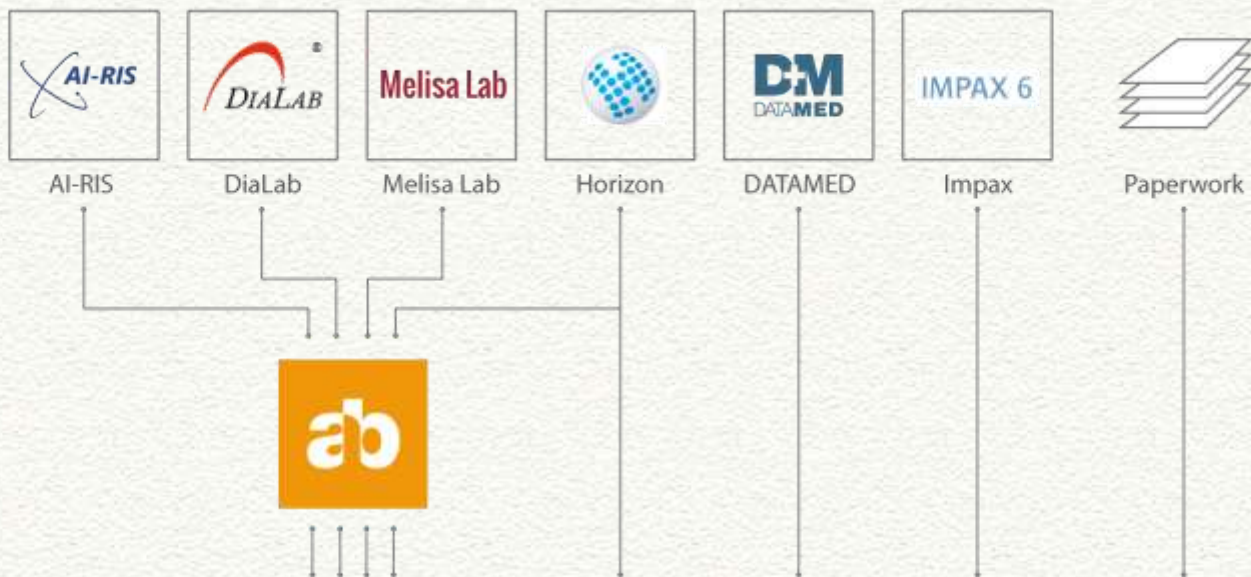
- Founded in 10.02.1910.
- Multi-profile university hospital
- 877 beds
- In 2014
  - 42 893 inpatients
  - 20 934 day stationary
  - 38 958 ambulatory patients in emergency care
  - 180 804 outpatients



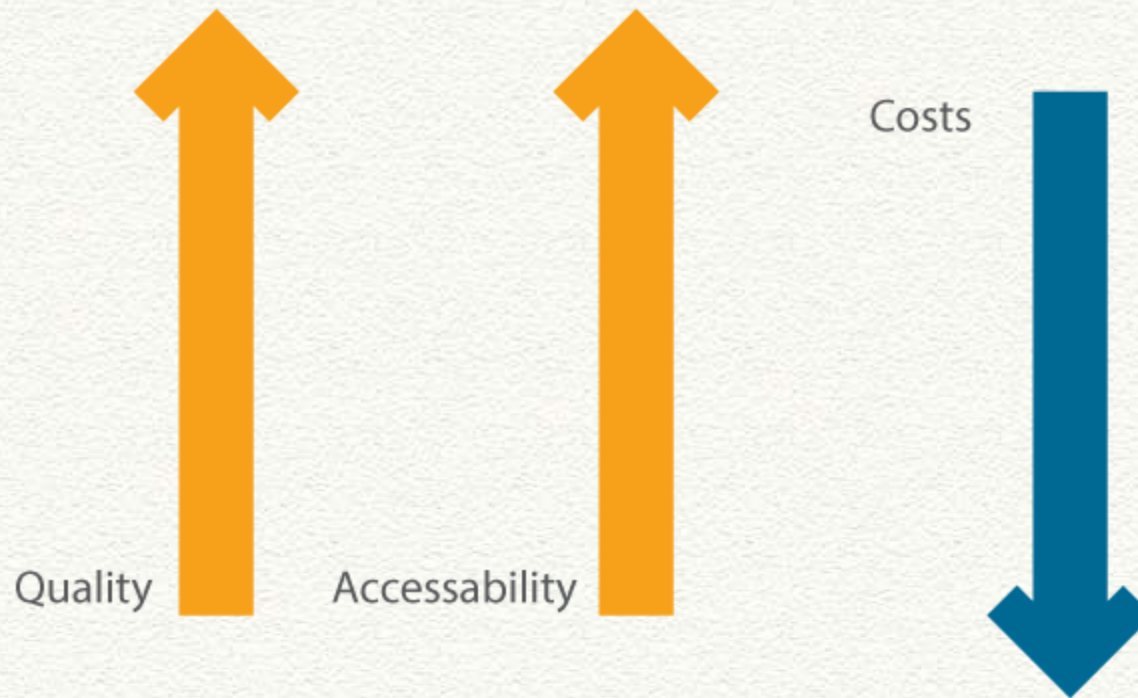
**eHealth**  
week

11 - 13 MAY 2015  
RIGA, LATVIA

Follow us  @eHealthWeekEU #eHW15



# Why e-Health?





# e-Health in university hospital

- Saving resources (financial, human, time);
- More information for decision making;
- Improved access to necessary information;
- More data for analyses and research;
- Easier to share information;
- Possibility to share knowledge and competences.

A stylized illustration of the Riga skyline, Latvia, featuring several prominent church spires and buildings along a waterfront with sailboats. The scene is set against a light blue sky and a white, curved foreground that suggests a hill or a stylized landscape.

# e-Health for patient

- Improved access to one's health information;
- Better overview of personal health information;
- Saving of time;
- Safety.



# Experience with telemedicine and e-health

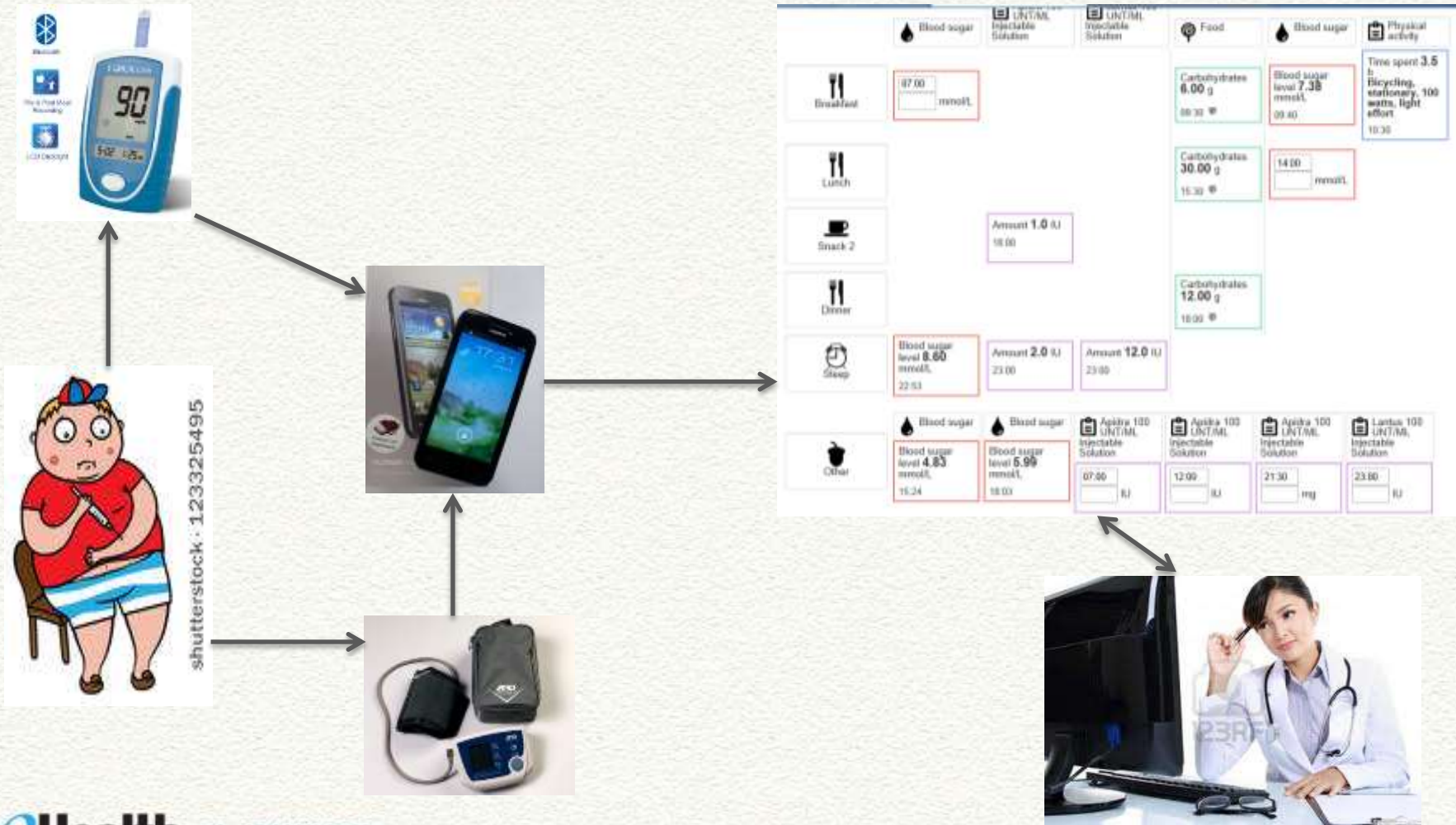
- **BITNET** (Baltic International Telmedicine Network) in early 2000s
- **DELMA** (Developing Estonian Latvian Medical Area) Est-Lat project
  - 10.2011 – 09.2012
- **eMedic** – Developing New Practices for Teleconsultation and Diabetes, Central Baltic INTERREG IV
  - 01.2013 – 12.2013



# Teleconsultation



# Self-monitoring for diabetes



# Distance monitoring





# Take away conclusions from eMedic

- Patients can be a driving force behind eHealth solutions
- Technology often is not flexible enough
- Health care personnel struggling with changing their routines
- Common platform for sharing and exchanging medical information is needed
- Continuous care and teleconsultations/e-visits should be reimbursed similar to convenient patient visits

# Challenges

- Teach our healthcare professionals to use these new tools
- Collaboration among different health care providers from different organizations
- Big changes in short time period
- Shift in roles – more involved patients
- Who is going to pay?



Your test came back positive!



Do you want to see your doctor on Tuesday 19 May: 9:30 - 10:30 to discuss your test results?





# THANK YOU

**eHealth**  
week

**11 - 13 MAY 2015**  
RIGA, LATVIA

Ieva Vitola

Head of e-health division

[ieva.vitola@stradini.lv](mailto:ieva.vitola@stradini.lv)

ORGANISED BY

Ministry of Health  
of the Republic of Latvia



Follow us  @eHealthWeekEU #eHW15