

Rural Maternity Services

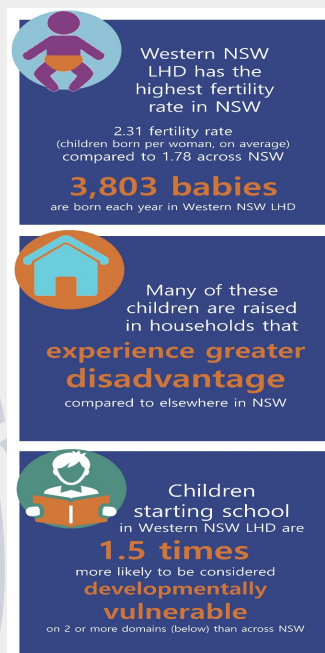
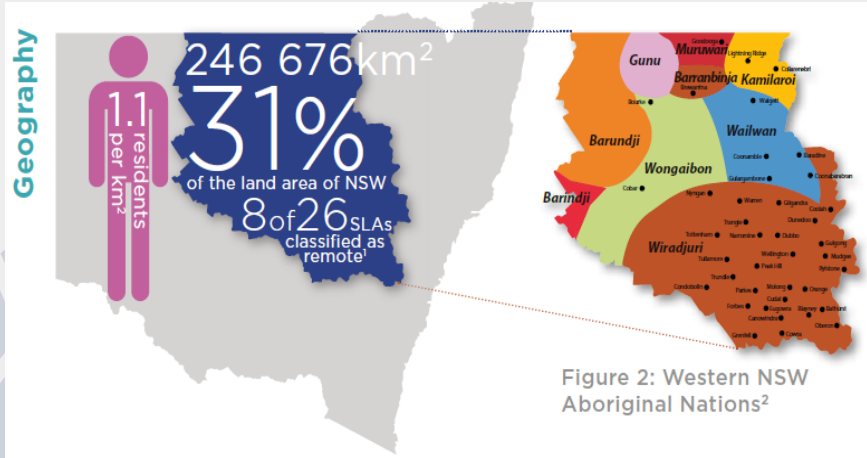
1st 2000 Days

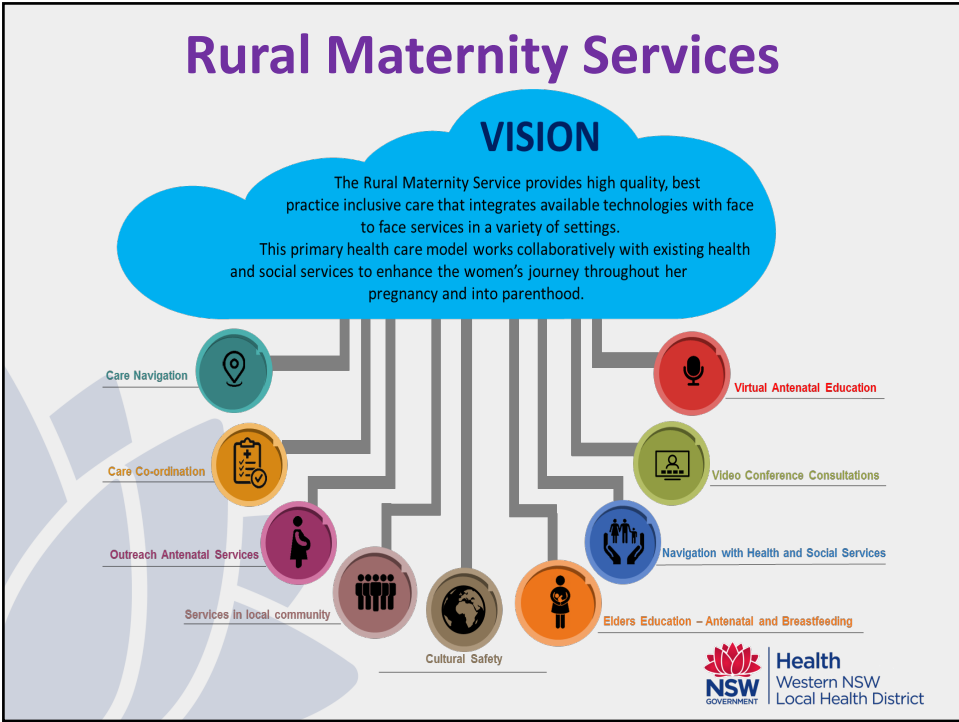


Lou Gillman and Emma Howard
Outreach Midwives



WESTERN NSW LOCAL HEALTH DISTRICT





What makes Us different?

- Partnership
- Community Enabling
- Access
- Navigation
- Social Support
- Early Intervention
- Health Coaching
- Inclusiveness
- Environment



Telehealth and Videoconferencing

- Weekly Multidisciplinary Case Conference
- Videoconferencing Consultation
- Localised support
- Escalation of Care
- Midwife & GP Education





Client Feedback

- Not having to travel to Dubbo , especially for “booking in”, being able to see the Midwives in the Ridge.
- “Midwives, Doctors and local supports keeping it about us and our baby “
- If have to travel to Dubbo for care feel less anxious as the Midwives are there to meet and help us.

Travel Time Saved

- By attending First comprehensive /eMaternity remotely in the women's community.
- Usually taking 90 minutes

Travelling from Lightning Ridge to Dubbo is 708 kms round trip , or 8 hours driving time.

10 visits equals 7080 kms and 15 travel hours saved !

Travel Time Saved

10 videoconferences.

9 were with Brewarrina clients.

Brewarrina to Dubbo = 816 km return trip.

or 9 hrs drive time return trip.

Total of 7344 kms and 81 hrs saved.

1 Bourke client

Bourke to Dubbo = **746 km return trip and 8 hrs travel hours**

Client Feedback

- Midwives were fantastic in organising care at home and in Dubbo.
- A familiar face meeting us in Maternity Unit and showing around.
- Always available by phone. Felt safe and cared for, followed up, and nothing seemed to be a problem
- Helped with getting assistance and appointments with other services -(Diabetes team/ Drug & Alcohol Team), and accommodation support (IPTAAS).
- Midwives spend time educating us, one on one.

Tiffany's Story






Kim's Baby – 'Frankie'



Tiffany, partner and 'Joey Grace'





Thank you

