



# Customs-to-Business Partnership of China Customs

SHAO Weijian

*Customs Office of the Mission of China to the EU*



中國海關  
CHINA CUSTOMS

1

# Importance of Customs-to-Business Partnership

# Importance



中國海關  
CHINA CUSTOMS

## › WCO:

- SAFE Framework
- Efficient Customs control
- Safety and security of the supply chain

## › China Customs:

- Business coordinator
- Customs-Business cooperation platform
- Credit cultivation
- Emerging business modals





中國海關  
CHINA CUSTOMS

# 2 Business Coordinator Programme



# Responsibilities

- › Consultations
- › Coordination
- › Customs relative problems
- › AEO management measures
- › Comments and proposals



中國海關  
CHINA CUSTOMS





中國海關  
CHINA CUSTOMS

# 3 Customs-Business cooperation platform

# Customs-Business cooperation platform



中國海關  
CHINA CUSTOMS

› “Internet+Customs” concept

› Main functions

- Information inquiry
- On-line application
- Problem resolving
- Documentations submitting
- Policy publicizing
- Business reminder

› A bridge between the Customs and business

› A bridge between Customs and local government





中國海關  
CHINA CUSTOMS

# 4 Credit cultivation of the business



# Credit cultivation of the business



中國海關  
CHINA CUSTOMS

- › Joint briefing conference
  - Publicization and interpretations
  - 20 events organized
- › Pre-validation training
  - Problem addressing
  - Rectification guidance



# Credit cultivation of the business



中國海關  
CHINA CUSTOMS

- › Training sessions on AEO programme
  - Headquarter
    - 6 AEO validation training sessions, 1500 business participated
  - Regional Customs
    - 300 AEO validation training sessions, 20000 business participated
- › Diversified forms
  - On-line platform
  - We-chat
  - Other social media





中國海關  
CHINA CUSTOMS

# 5 Encourage the development of Emerging Business Modals

# Encourage the development of EBM



中國海關  
CHINA CUSTOMS

## Emerging Business Modals

- ◆ Cross-border E-commerce enterprises
- ◆ Integrated foreign trade service platform (enterprise)

- Integrating all kinds of services linked to foreign trade (financing, customs clearance, tax rebates, and logistics, insurance and others ) and uniformly distributing them to small and medium-sized foreign trade enterprises.

# Encourage the development of EBM<sub>s</sub>



中國海關  
CHINA CUSTOMS

## Integrated national Customs clearance reform



streamlined control

optimized service



# Encourage the development of EBM's



中國海關  
CHINA CUSTOMS

- › Tolerance
- › Prudence
- › Innovation
- › Coordination



- › Balance
- › Transparency
- › Non-discrimination
- › Sustainable development

WCO Framework of Standards  
on Cross-Border E-Commerce



中國海關  
CHINA CUSTOMS

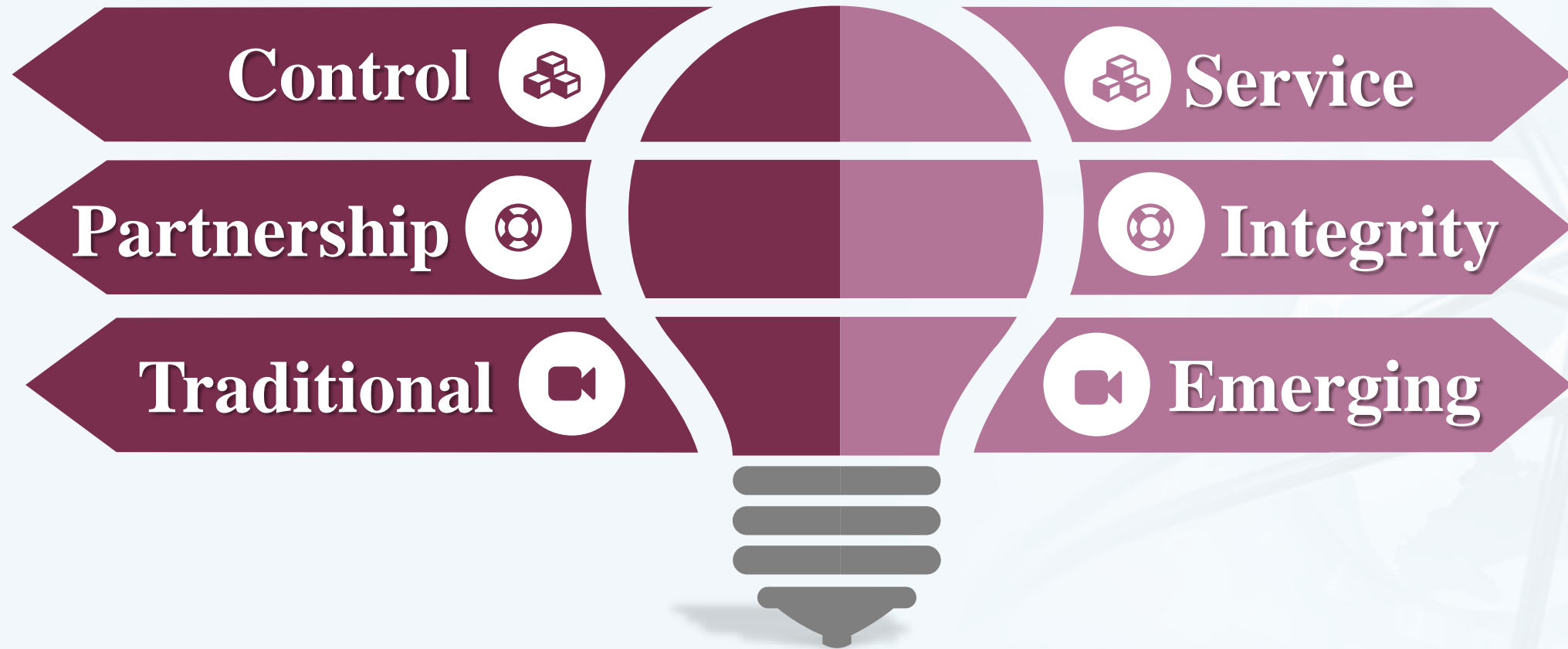
# 6 Challenges

---

# 3 balances



中國海關  
CHINA CUSTOMS



# THANKS



**China Customs**  
**2018.3.15**