



eHealth
week

11 - 13 MAY 2015
RIGA, LATVIA

ORGANISED BY



EU2015 LV



Ministry of Health
Republic of Latvia

meHEALTH



European
Commission



WHIT
World Health
Innovation Trust



SLIMMER
LEVEN 2020




Brainport
Eindhoven

Provincie Noord-Brabant

CIRCLES OF CARE: INNOVATIVE COLLABORATION BY USE OF EHEALTH

Marieke van Beurden – Cooperative Slimmer Leven 2020

Follow us  @eHealthWeekEU #eHW15

SEAPORT – AIRPORT – BRAINPORT

The three pillars of the Dutch economy



AN OPEN AND INNOVATIVE ECOSYSTEM

... continued today



High-tech
Systems and
Materials

Food &
Nutrition

Automotive

Life Tech

Design

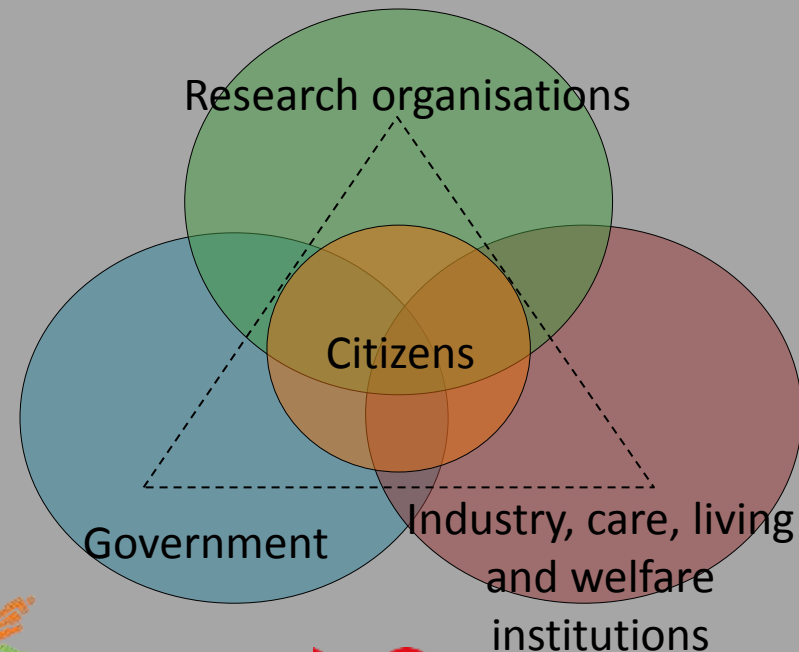




Cooperative Slimmer Leven 2020

3-star reference site

- Stimulate high quality of life and self-management for people in the South East of Brabant, the Netherlands
- For citizens relevant technological innovations in health, living and wellbeing
- From experiments to large scale deployment, valorisation and standardisation
- Collaboration in quadruple helix: create innovative breakthroughs together



Core tasks of Slimmer Leven 2020



- Connect partners in the network by thematic areas to initiate projects
- Build and maintain knowledge structure, facilitate the network through conferences, study trips, etc. to foster knowledge dissemination and innovation
- Agenda-setting and addressing issues at various levels of administration and management
- Develop additional resources and alternative financing, subsidies and other types of funding

A close-up photograph of an elderly person's hands being held and supported by another person's hands. The skin is wrinkled and aged. The background is dark and out of focus, showing a purple garment with gold buttons.

Circles of Care
Cross organisational nightcare
supported by assisted living

First project = let's work together during the night AND use technology for assisted living

1. Remote surveillance combined with a communication support centre
1. Caregivers work for an area instead of one location or one organization
3. The communication support centre coordinates during the night



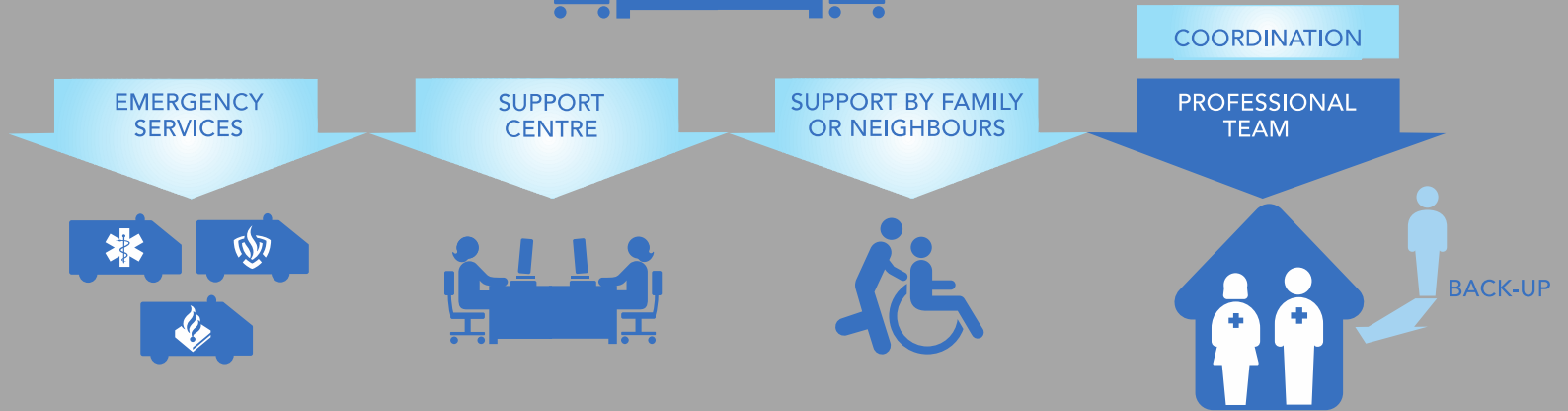
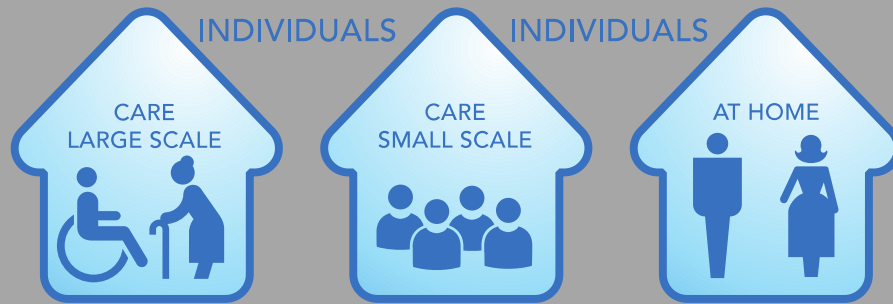
A Care Circle =

- Collaboration of care providers on a local level in a team
- They provide care in a specific area during the night, irrespective of which care organization a specific person is a customer
- The aim is to have higher quality of care and more security of planned and unplanned care



<https://vimeo.com/50241607>





Used devices



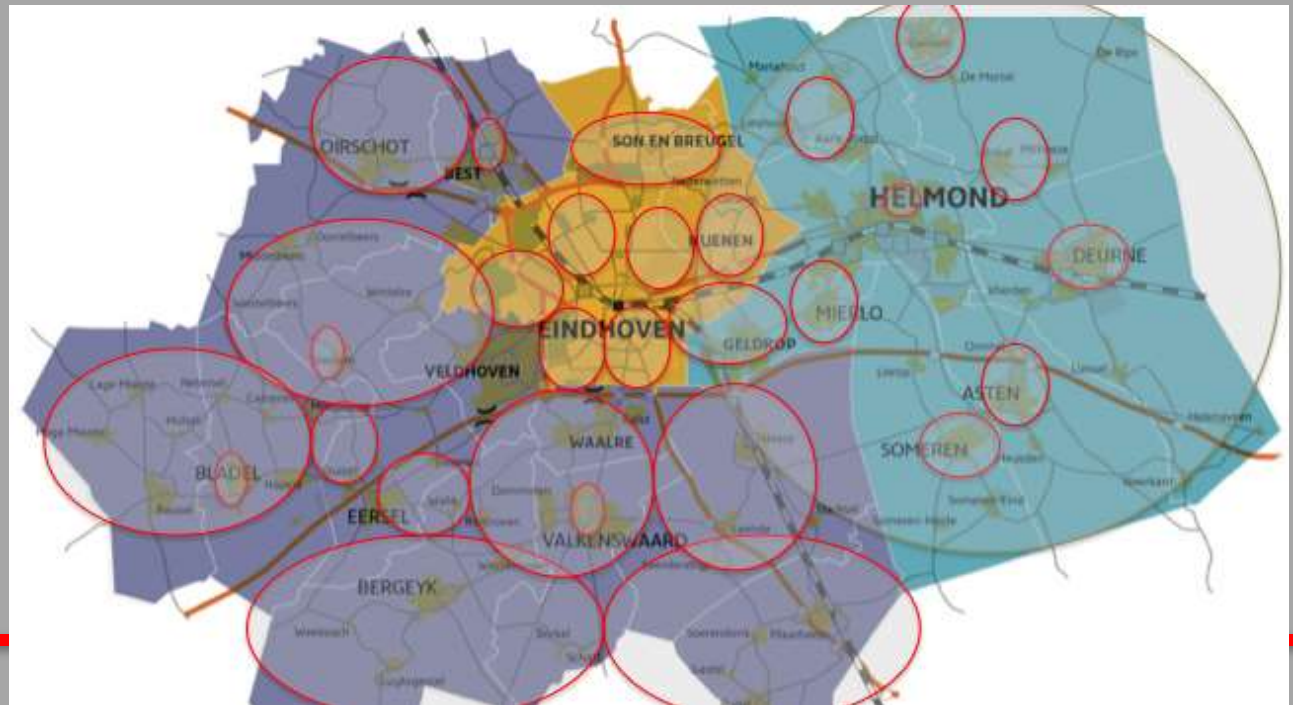
Sensor at door
Audio monitoring
Movement sensors
Camera's (incidentally)
And more...



Results for Circles of Care

ZORG
CIRKELS

1. Better quality of care
2. Cost saving because less people working the night
3. Unique collaboration built on trust
4. Process and information management difficult



Communication support centre > Centrale 24

- SSC with shared ownership of 12 care and welfare providers
- Service portfolio by demand of customers: 24/7 remote surveillance, care on a distance, domotics
- Open shared and inclusive ICT platform



Brainport Healthy Living Lab

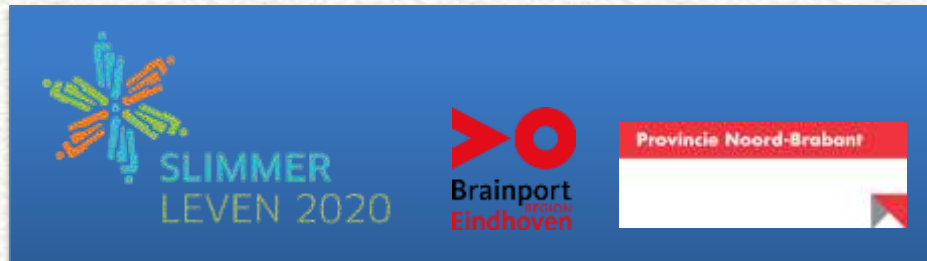
Scaling up to 100,000 health connected citizens in 2020



- Create value = better health + economic growth
- Open platform for information, data and communication
- Shared initiative with Philips Health Suite
- Connect to ENOLL



THANK YOU



eHealth
week

11 - 13 MAY 2015
RIGA, LATVIA

ORGANISED BY



meHEALTH



Contact

Marieke van Beurden

Program Manager

Cooperative Slimmer Leven 2020

www.slimmerleven2020.com

m.vanbeurden@slimmerleven2020.com

+316-46261442

Follow us  @eHealthWeekEU #eHW15