



UPU

UNIVERSAL
POSTAL
UNION

2021 WCO TECH-CON

*Session V – Improving interoperability with data
standardization and harmonization*

Overall global ecommerce trends in the postal industry



Paper-based
clearance



Data-driven
processes

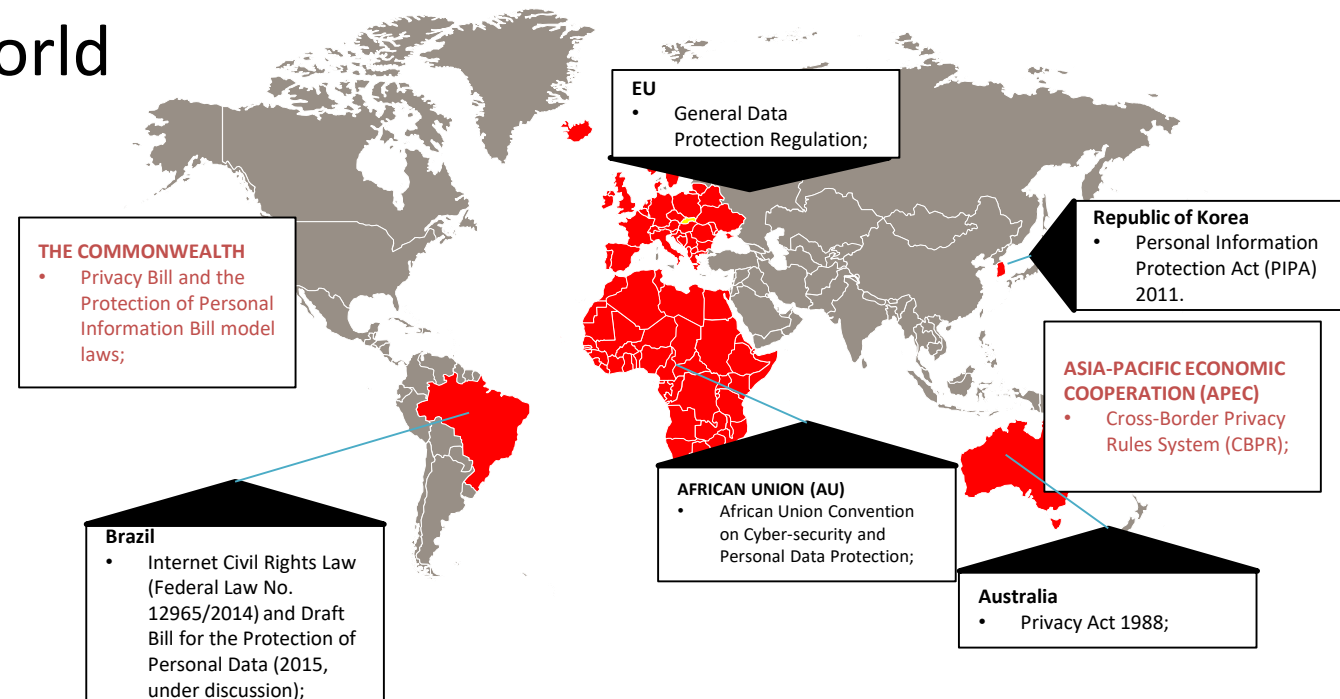


- **New digital reality**

- Today's world is a data driven world

- **Key issues:**

- Postal data
- Data flows and systems
- Protecting data
- Data Sharing Agreements (DSA)
- Legal demands
- Social requirements (protecting customers & partners)





UNIVERSAL
POSTAL
UNION

Evolving Regulatory Landscape Electronic Advance Data Requirements

New legislation

US - Stop Act - 70% of all incoming items containing goods by 31 Dec 2018 and 100% by 1 Jan 2021
Changes to UPU Regulations (article 8)
EU - ICS2 , ...

S9/S10 linking

S9/S10 linking (nested PREDES) will be required for all items (including non-tracked letter-post items containing goods)

Mandatory ITMATT

Mandatory ITMATT for all postal items containing goods

PLACI - ICS-2 R1 (pre-departure)

EU Post at destination. Pre-loading item-receptacle level info needed for ICS2 (flows 1-7 of EAD model - pre-departure data sent by the origin Post, and relayed to ICS-2 by EU Post at destination)

CARDIT conversion

CARDIT message must be converted to the cargo message XFWB and XFHL before filing to the Customs (F42) from 2023

PLACI - ICS-2 R2 (pre-arrival)

Pre-arrival consignment level, for ICS2 from 2023 afor air mail and from 2024 for rail, maritime and road (flow 8 of EAD model - pre-arrival data sent by carriers)

Today, S10, ITMATT, S9-S10 (PREDES), CN22/CN23/CP72

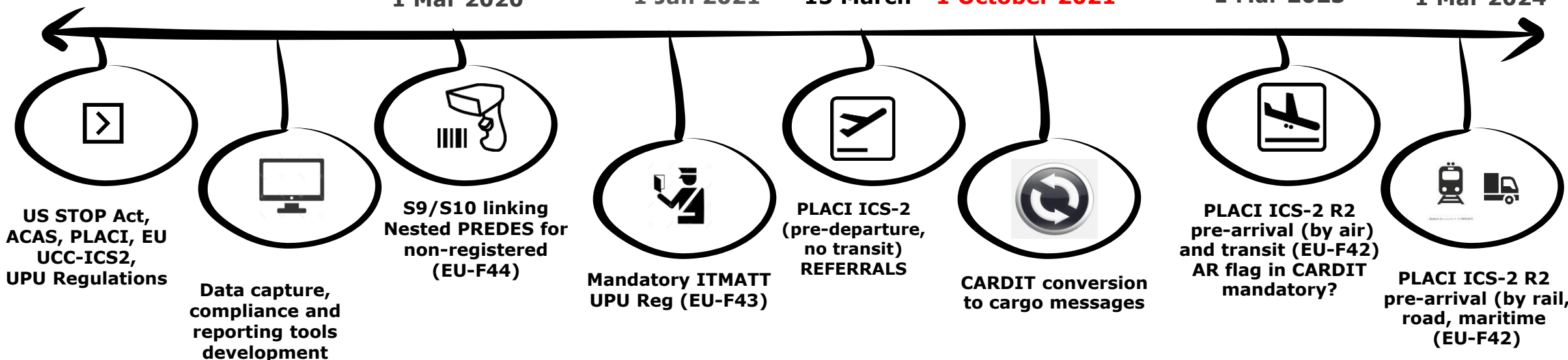
1 Mar 2020

1 Jan 2021

15 March - **1 October 2021**

1 Mar 2023

1 Mar 2024



**2021: ITMATT, PREDES, ITMREF-REFRSP, 2021->2023 :
CARDIT AR FLAG, PAPERLESS TRANSPORT**

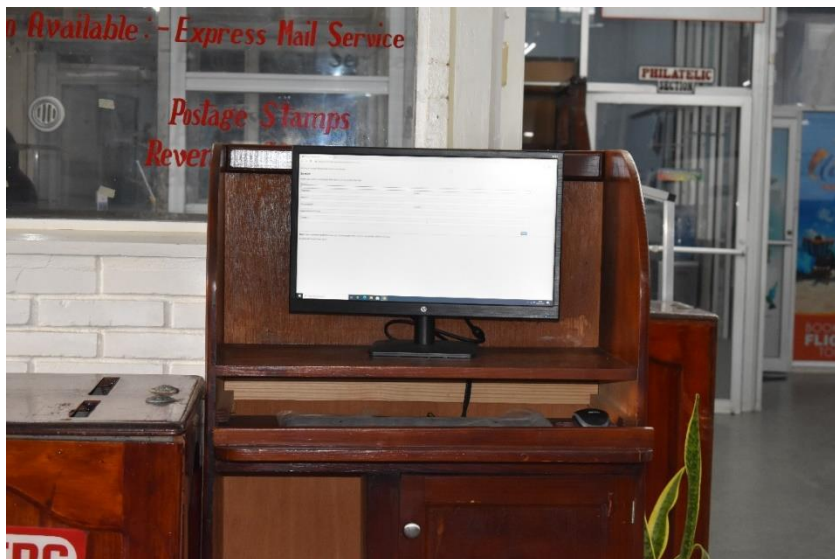


UPU

UNIVERSAL
POSTAL
UNION

EAD implementation : Success stories

Citizens & Posts need time



WCO-UPU guidelines on data capture and compliance with the CN 22/23 (flow zero)

WCO-UPU Postal Customs Guide

UPU Country-specific Prohibitions List

WCO-UPU Postal Customs Guide

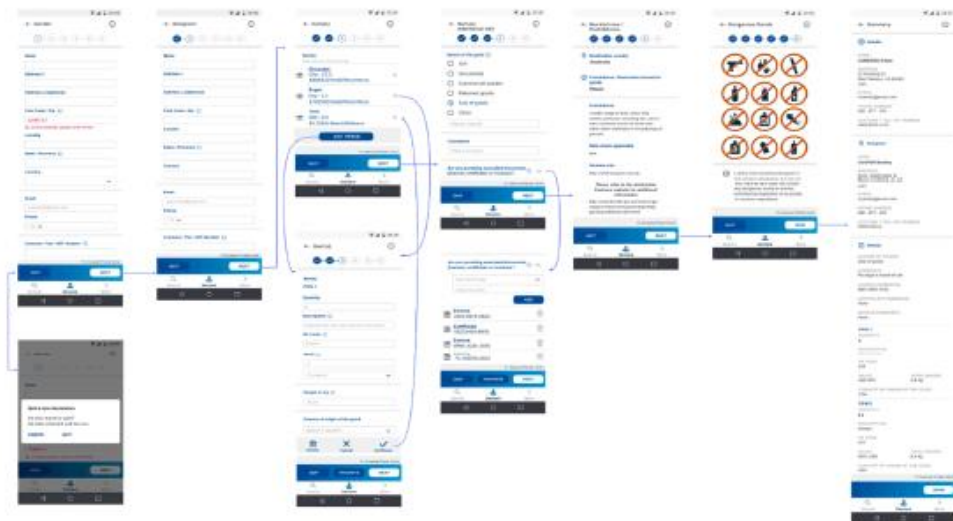
WCO-UPU Guidelines for developing an MoU

WCO-UPU Guidelines on EAD

WCO-UPU data capture guidelines

WCO-UPU messaging standard CUSITM-CUSRSP

->Interface with UNCTAD's AsycudaWorld



eCustoms - Retrieve [CU001]

File Edit View Help

100 %

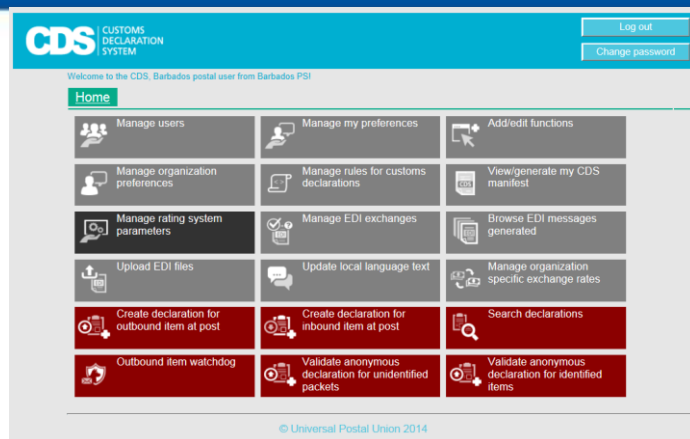
UNIVERSAL
POSTAL
UNION

CUSTOMS DECLARATION

GENERAL INFORMATION			
Form Type	CN23	Customs Declaration - CN 23	
Flow	IMPORT	Definitive Import	
Mode of Payment	91	Electronic Payment	Status Created
Customs Office	CU001	Postal Office	
Registration No. & Date	17CHCU00100000035	10/11/2017	
Reference No. & Date	RR12102015XB3	09/11/2017	
SENDER		RECEIVER	
No.		No.	
Joe Doe Barbados Yacht Club, Bay Street, Bridgetown Barbados, 23123 Saint Michael		Max Mustermann Post Office 3000 Bern 15 Weltpostverein 3015 Bern Switzerland	
ARRIVAL INFORMATION (*)			
Transaction completed			

Smart Supply Chain Management

EAD and Paperless customs

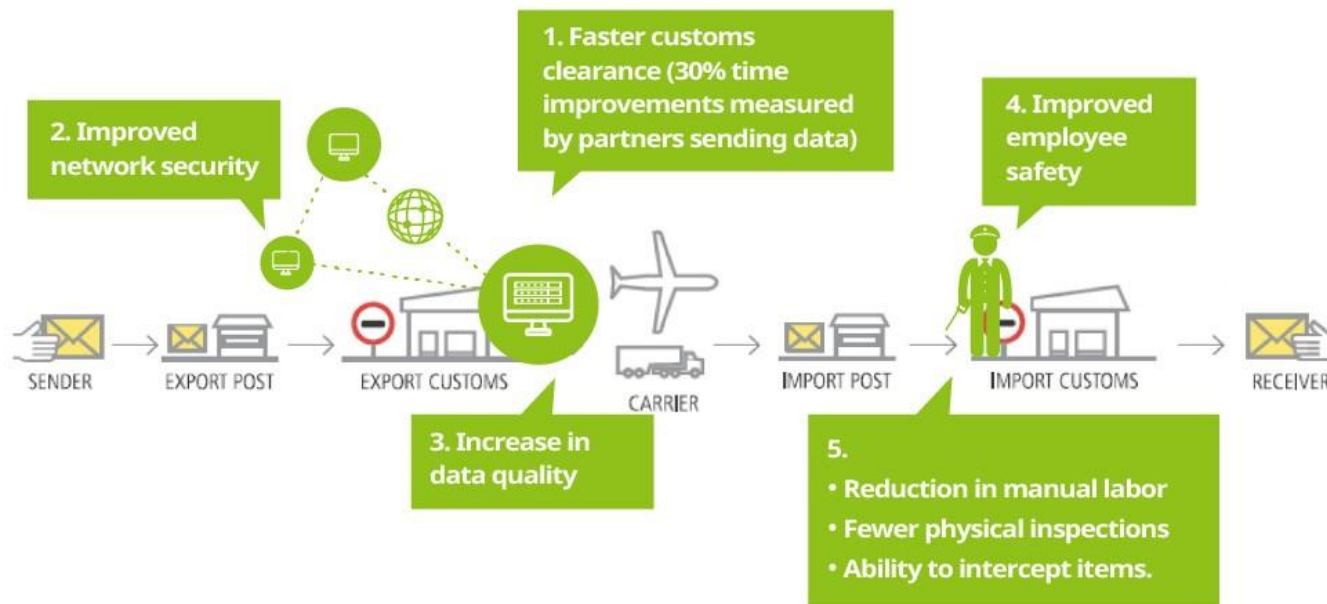


Paperless Customs Processing

UPU Customs Declaration System (CDS)

Developed on the basis of
WCO–UPU EDI messaging CUSITM-CUSRSP

- Supports EAD requirements
- Focuses on Postal Customs processes
- Reduction of paperwork
- WCO CUSITM-CUSRSP Based interface with UNCTAD's ASYCUDA World

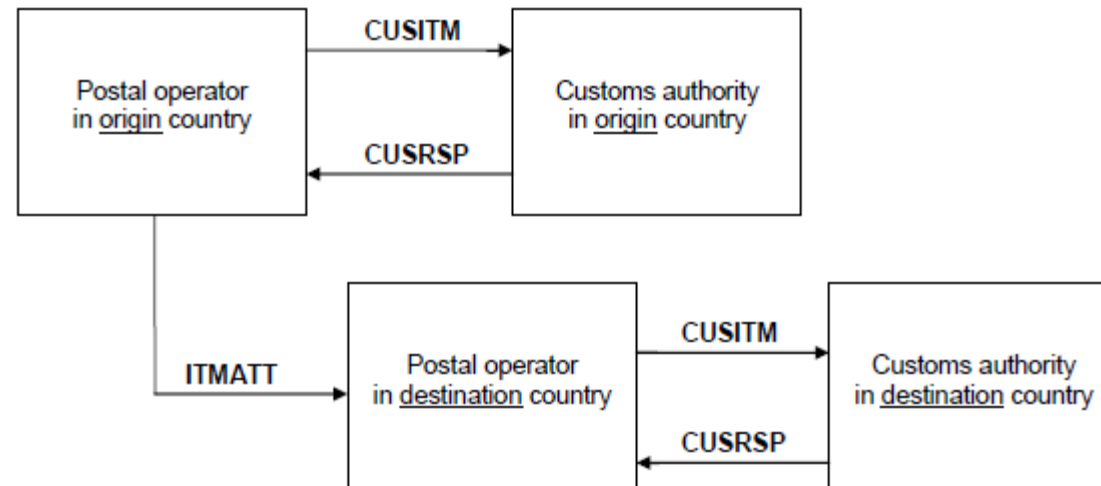




Interoperability through joint WCO-UPU Messaging Standards

CUSITM – CUSRSP V2 : INCLUDES MAPPING TO WCO DATA MODEL

- XML - File or Web Services based exchanges
- Based on postal customs declaration forms : CN23 -> ITMATT datasets
- CUSITM V2 Includes mapping to WCO Data Model
- CUSRSP V2 Supports PLACI regimes





Example CUSITM

```
<?xml version="1.0" encoding="utf-8"?>
<interchange xmlns:xsi="http://www.w3.org/2001/XMLSchema-instance" xmlns:xsd="http://www.w3.org/2001/XMLSchema"
  xmlns="m43" xsi:schemaLocation="m43 m43-3.xsd">
  <date>201604151836</date>
  <intref>7</intref>
  <sender_network_address>CAS01</sender_network_address>
  <recipient_network_address>CUSTOMS_CA</recipient_network_address>
  <message>
    <function>S</function>
    <mesref>1</mesref>
    <msgtype>
      <code>CUSITM</code>
      <version>1</version>
      <release>1</release>
      <usage_level>0</usage_level>
    </msgtype>
    <msgbody>
      <custm_1_1_0>
        <mail_flow>I</mail_flow>
        <inbound>
          <item>
            <ID>
              <dtype>10</dtype>
              <S10 compliant ID ->
              <value>CP000012342CH</value>
            </ID>
            <attributes>
              <info_provider>O</info_provider>
              <Information provided by orig post ->
              <upu_form>
                <addressee>
                  <identification>
                    <name>John Smith</name>
                  </identification>
                  <postal_address>
                    <premises>Summer avenue</premises>
                    <locality>
                      <code>K1A 1M4</code>
                      <name>Ottawa</name>
                      <region>ON</region>
                    </locality>
                    <country_cd>CA</country_cd>
                  </postal_address>
                </addressee>
                <measured_gross_weight>12.3</measured_gross_weight>
                <postage_paid>
                  <currency>CHF</currency>
                  <amount>12</amount>
                </postage_paid>
                <nature_of_transaction_code>31</nature_of_transaction_code>
                <Gift ->
                <posting_date>20160413</posting_date>
                <content_piece>
                  <number>1</number>
```

```
                <description>Swiss chocolates</description>
                <declared_value>
                  <currency>CHF</currency>
                  <amount>20</amount>
                </declared_value>
              </content_piece>
            </content_piece>
            <number>2</number>
            <description>Plastic toy</description>
            <declared_value>
              <currency>CHF</currency>
              <amount>25</amount>
            </declared_value>
          </content_piece>
        </upu_form>
        <agreed_info>
          <origin_country_code>CH</origin_country_code>
          <mail_class>C</mail_class>
          <this item is a parcel ->
          <handling_class>V</handling_class>
          <insured ->
          <arv_info>
            <transport_mode>4</transport_mode>
            <air ->
            <date>20160415</date>
          </arv_info>
          <references>
            <customs_ref>
              <identifier>12345</identifier>
            </customs_ref>
          </references>
        </agreed_info>
      </attributes>
    </item>
  </custm_1_1_0>
</msgbody>
</message>
</interchange>
```



UPU

UNIVERSAL
POSTAL
UNION

Thank You

