

Sweater Garland



Photograph by David Lazarus

Seed Stitch Sweater

Design by Pat Olski

NOTE

- Front and back are knitted flat as one piece.
- Sleeves are picked up at armhole edge and knit down to cuff.
- One sweater uses approximate ½ skein of yarn.
- Only a few yards are required for 2nd “ball” to work the right front neck.

FRONT

Cast on 25 sts.

Rows 1 and 3 (RS) K2, *p1, k1; rep from * to last 3 sts, p1, k2.

Rows 2 and 4 (WS) P2, * k1, p1; rep from * to last 3 sts, k1, p2.

Beg seed stitch

Row 1 (RS) K2, *p1, k1; rep from * to last 3 sts, p1, k2.

Row 2 (WS) P2, * p1, k1; rep from * to last 3 sts, p3.

Rep [rows 1 and 2] 9 times more. End with a WS row.

Row 1 (RS) K2, p to last 2 sts, k2.

Row 2 (WS) P2, k to last 2 sts, p2.

Beg with a RS row, work 8 rows in St st (k on RS, p on WS), end with a WS row.

Neck shaping

Next Row (RS) K9, join 2nd ball of yarn and bind off center 7 sts, k to end.

Working both sides at once, work 1 WS row.

Dec 1 st at each neck edge, 1 st in from edge, on foll RS row, then every other row once more—7 sts rem each side. Work 1 WS row. Do *not* cut yarn.

BACK

Row 1(RS) K7, cast on 11 sts for back neck, k7—25 sts.

Row 2(WS) Purl.

Continue in St st for 10 rows more, end with a WS row.

Row 1 (RS) K2, p to last 2 sts, k2.

Row 2 (WS) P2, k to last 2 sts, p2.

Beg seed stitch

Row 3 (RS) K2, *p1, k1; rep from * to last 3 sts, p1, k2.

Row 4 (WS) P2, * p1, k1; rep from * to last 3 sts, p3.

Rep [rows 3 and 4] 9 times more.

Rows 1 and 3 (RS) K2, *p1, k1; rep from * to last

3 sts, p1, k2.

Rows 2 and 4 (WS) P2, * k1, p1; rep from * to last 3 sts, k1, p2.

Bind off in pat.

SLEEVES

Place markers at side edges of front and back 15 rows from lower edge. With RS facing, pick up and knit 25 sts between markers.

Rows 1 and 3 (WS) P2 (St st selvage sts), *p1, k1; rep from * to last 3 sts, p1, p2 (St st selvage sts).

Row 2 (RS) K2 (St st selvage sts), *p1, k1; rep from * to last 3 sts, p1, k2 (St st selvage sts).

Dec row (RS) K2, ssk, work in seed st to last 4 sts, k2tog, k2—2 sts dec'd.

Cont in seed stitch with 2 selvage sts each side, rep dec row every 4th row 3 times more—17 sts. Work 1 WS row.

Cuff

Rows 1 and 3 (RS) K2, *p1, k1; rep from * to last 3 sts, p1, k2.

Rows 2 and 4 (WS) P2, * k1, p1; rep from * to last 3 sts, k1, p2.

Bind off in pat.

FINISHING

Block lightly. Sew side and sleeve seams. ❖

SKILL LEVEL

■ ■ ■ ■ ■ EASY



MATERIALS

- One 3½oz/100g skein (each approx 219yd/200m) of Rowan *Pure Wool Worsted* (100% superwash wool) in #132 buttercup
- One pair size 5 (3.75mm) needles, OR SIZE TO OBTAIN GAUGE
- Stitch markers

KNITTED MEASUREMENTS

- Width 4½"/11.5cm
- Length 4"/10cm

GAUGE

20 sts and 28 rows = 4"/10cm over St st using size 5 (3.75mm) needles.

TAKE TIME TO CHECK GAUGE.

*For all pattern-related inquiries please visit www.vogueknitting.com

Stripe Sweater

Design by Pat Olski

NOTE

- Front and back are knitted flat as one piece.
- Sleeves are picked up at armhole edge and knit down to cuff.
- One sweater uses approximate ½ skein of yarn.
- Only a few yards are required for 2nd “ball” to work the right front neck.

FRONT

With A, cast on 25 sts.

Row 1 (RS) K2, *p1, k1; rep from * to last 3 sts, p1, k2.

Row 2 (WS) P2, *k1, p1; rep from * to last 3 sts, k1, p2.

With B, rep rows 1 and 2.

Working in St st (k on RS, p on WS), work [2 rows A, 2 rows B] 3 times.

Work 6 rows A, end with a WS row.

Neck shaping

Next Row (RS) With A, k9, join 2nd ball of A and bind off center 7 sts, k to end.

Working both sides at once, work 1 WS row.

Dec 1 st at each neck edge, 1 st in from edge, on foll RS row, then every other row once more—7 sts rem each side. Work 1 WS row. Do *not* cut yarn.

BACK

Row 1 (RS) With A, k7, cast on 11 sts for back neck, k7—25 sts.

Row 2 (WS) Purl.

Cont in St st with A for 10 rows. Work [2 rows B, 2 rows A] 3 times.

Row 1 (RS) With B, knit .

Row 2 (WS) With B, p2, *k1, p1 rep to last 3 sts, k1, p2.

Row 3 (RS) With A, knit .

Row 4 (WS) With A, p2, *k1, p1 rep to last 3 sts, k1, p2.

With A, bind off in pat.

SLEEVES

Place markers at side edges of front and back 15 rows from lower edge. With RS facing, pick up and knit 25 sts between markers.

Rows 1 and 3 (WS) With A, purl.

Row 2 (RS) With A, knit.

Row 4 (Dec) With A, k1, ssk, k to last 3 sts, k2tog, k1—2 sts dec’d.

Rep rows 1–4 once more.

Stripe sequence

Row 1 (WS) With A, purl.

Row 2 (RS) With A, knit.

Row 3 (WS) With B, purl.

Row 4 (Dec) With B, k1, ssk, k to last 3 sts, k2tog, k1—2 sts dec’d.

Rep rows 1–4 once more—17 sts.

With A, purl 1 row, knit 1 row.

Cuff

Row 1 (RS) With B, knit .

Row 2 (WS) With B, p2, *k1, p1 rep to last 3 sts, k1, p2.

Row 3 (RS) With A, knit .

Row 2 (WS) With A, p2, *k1, p1 rep to last 3 sts, k1, p2.

With A, bind off in pat.

FINISHING

Block lightly. Sew side and sleeve seams. ❖

SKILL LEVEL

■ ■ ■ ■ ■ EASY



MATERIALS

- One 3½oz/100g skein (each approx 219yd/200m) of Rowan *Pure Wool Worsted* (100% superwash wool) in #122 plum (A)
- Small amount in #114 splash (B)
- One pair size 5 (3.75mm) needles, OR SIZE TO OBTAIN GAUGE
- Stitch markers

KNITTED MEASUREMENTS

- Width 4½"/11.5cm
- Length 4"/10cm

GAUGE

20 sts and 28 rows = 4"/10cm over St st using size 5 (3.75mm) needles.

TAKE TIME TO CHECK GAUGE.

*For all pattern-related inquiries please visit www.vogueknitting.com

Heart Sweater

Design by Pat Olski

NOTE

- Front and back are knitted flat as one piece.
- Sleeves are picked up at armhole edge and knit down to cuff.
- One sweater uses approximate ½ skein of yarn.
- Only a few yards are required for 2nd “ball” to work the right front neck.

FRONT

With MC, cast on 25 Sts.

Rows 1 and 3 (RS) K2, *p1, k1; rep from * to last 3 sts, p1, k2.

Rows 2 and 4 (WS) P2, * k1, p1; rep from * to last 3 sts, k1, p2.

Work in St st (k on RS, p on WS) for 24 rows, end with a WS row.

Neck shaping

Next Row (RS) K9, join 2nd ball of yarn and bind off center 7 sts, k to end.

Working both sides at once, work 1 WS row. Dec 1 st at each neck edge, 1 st in from edge, on foll RS row, then every other row once more—7 sts rem each side. Work 1 WS row. Do *not* cut yarn.

BACK

Row 1 (RS) K7, cast on 11 sts for back neck, k7—25 sts.

Row 2 (WS) Purl.

Cont in St st for 24 rows more, end with a WS row.

Rows 1 and 3 (RS) K2, *p1, k1; rep from * to last 3 sts, p1, k2.

Rows 2 and 4 (WS) P2, * k1, p1; rep from * to last 3 sts, k1, p2.

Bind off in pat.

SLEEVES

Place markers at side edges of front and back 15 rows from lower edge. With RS facing and MC, pick up and knit 25 sts between markers.

Rows 1 and 3 (WS) Purl.

Row 2 (RS) Knit.

Row 4 (dec) K1, ssk, k to last 3 sts, k2tog, k1.

Rep [rows 1–4] 3 times more, end with a RS row—17 sts.

Purl 1 row, knit 1 row.

Cuff

Row 1 (WS) P2, * k1, p1; rep from * to last 3 sts, k1, p2.

Row 2 (RS) K2, *p1, k1; rep from * to last 3 sts, p1, k2.

FINISHING

With CC, beg 11 rows from lower edge and centering chart on front of sweater, work duplicate stitch heart. Block lightly. Sew side and sleeve seams. ❖

SKILL LEVEL

■ ■ ■ ■ ■ EASY



MATERIALS

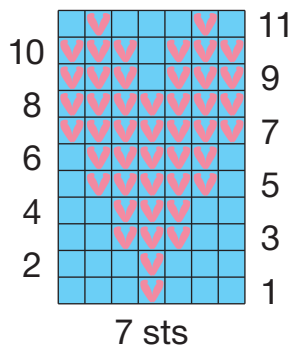
- One 3½oz/100g skein (each approx 219yd/200m) of Rowan *Pure Wool Worsted* (100% superwash wool) in #145 ocean (MC)
- Small amount in #118 candy (CC)
- One pair size 5 (3.75mm) needles, OR SIZE TO OBTAIN GAUGE
- Locking stitch markers

KNITTED MEASUREMENTS

- Width 4½"/11.5cm
- Length 4"/10cm

GAUGE

20 sts and 28 rows = 4"/10cm over St st using size 5 (3.75mm) needles.
TAKE TIME TO CHECK GAUGE.



KEY

- main color (MC)
- ♥ duplicate stitch (CC)

*For all pattern-related inquiries please visit www.vogueknitting.com

Cable Sweater

Design by Pat Olski

STITCH GLOSSARY

4-st RC Sl 2 sts to cn, hold to *back*, k2, k2 from cn.

4-st LC Sl 2 sts to cn, hold to *front*, k2, k2 from cn.

Pm Place marker.

NOTE

- Front and back are knitted flat as one piece.
- Sleeves are picked up at armhole edge and knit down to cuff.
- One sweater uses approximate ½ skein of yarn.
- Only a few yards are required for 2nd “ball” to work the right front neck.

FRONT

Cast on 27 sts.

Rows 1 and 3 (RS) K3, *p1, k1; rep from * to last 4 sts, p1, k3.

Rows 2 and 4 (WS) P3, *k1, p1; rep from * to last 4 sts, k1, p3.

Beg cable pat

Setup Row 1 (RS) K2, [p1, sl 1] twice, p2, 4-st RC, p3, 4-st LC, p2, [sl 1, p1] twice, k2.

Rows 2 and 4 (WS) K the knit sts and p the purl sts.

Row 3 K2, [p1, sl 1] twice, p2, k4, p3, k4, p2, [sl 1, p1] twice, k2.

Row 5 K2, [p1, sl 1] twice, p2, 4-st RC, p3, 4-st LC, p2, [sl 1, p1] twice, k2.

Rep [rows 2–5] 4 times more, then work row 2 once more.

Neck shaping

Next Row (RS) Work 10 sts in pat, join 2nd ball of yarn, bind off center 7 sts, work in pat to end. Working both sides work 1 WS row. Dec 1 st at each neck edge, 1 st in from edge, on foll RS row, then every other row once more—8 sts rem each side. Work 1 WS row. Do *not* cut yarn.

BACK

Row 1 (RS) Work 8 sts in pat, cast on 11 sts for back neck, work 8 sts—27 sts.

Row 2 (WS) K the k sts and p the p sts.

Beg cable pat

Row 1 (RS) K2, [p1, sl 1] twice, p2, 4-st LC, p3, 4-st-RC, p2, [sl 1, p1] twice, k2.

Rows 2 and 4 (WS) K the knit sts and p the purl sts.

Row 3 K2, [p1, sl 1] twice, p2, k4, p3, k4, p2, [sl 1, p1] twice, k2.

Rep [rows 1–4] 6 times more, then work row 1 once more. Work ribbing as foll:

Rows 1 and 3 (WS) P3, *k1, p1; rep from * to last 4 sts, k1, p3.

Rows 2 and 4 (RS) K3, *p1, k1; rep from * to last 4 sts, p1, k3.

Bind off in pat.

RIGHT SLEEVE

Place markers at side edges of front and back 15 rows from lower edge. With RS facing, pick up and knit 26 sts between markers for right sleeve.

Rows 1 and 3 (WS) P8, pm, k3, p4, k3, pm, p8.

Row 2 (RS) K to marker, p3, 4-st RC, p3, k to end.

Row 4 (dec) K1, ssk, k to marker, p3, k4, p3, k to last 3 sts, k2tog, k1.

Rep [rows 1–4] 3 times more, then rows 1–3 once more—18 sts.

Cuff

Row 1 (RS) K2, *p1, k1; rep from * to last 2 sts, k2.

Row 2 (WS) P2, *p1, k1; rep from * to last 2 sts, p2.

Bind off all sts.

LEFT SLEEVE

Work as for right sleeve, working 4-st LC at center instead of 4-st RC.

FINISHING

Block lightly. Sew side and sleeve seams.

CORD FOR GARLAND

With size F/5 (3.75mm) crochet hook, make an 88"/223cm chain. Using photo as guide, thread chain through sleeves of sweater. ❖

SKILL LEVEL

■ ■ ■ ■ ■ EASY



MATERIALS

- One 3½oz/100g skein (each approx 219yd/200m) of Rowan *Pure Wool Worsted* (100% superwash wool) in #156 aqua
- Small amount in #109 black for cord
- One pair size 5 (3.75mm) needles, OR SIZE TO OBTAIN GAUGE
- One size F/5 (3.75mm) crochet hook
- Stitch markers
- Cable needle (cn)

KNITTED MEASUREMENTS

- Width 4½"/11.5cm
- Length 4"/10cm

GAUGE

20 sts and 28 rows = 4"/10cm over St st using size 5 (3.75mm) needles.

TAKE TIME TO CHECK GAUGE.

*For all pattern-related inquiries please visit www.vogueknitting.com