

# PLA WA STATE CONFERENCE



**16 - 17 JUNE 2016, ESPLANADE HOTEL FREMANTLE**

**3 Concurrent Streams • 18 Sessions • Trade Show • 4 Technical Tours**

**PLA WA Awards Ceremony**

**Members - \$550+GST Non-members - \$650+GST**

**[www.eiseverywhere.com/ehome/plawa16/welcome/](http://www.eiseverywhere.com/ehome/plawa16/welcome/)**

**- Registrations close 19 May**

## SPONSORED BY



**Department of  
Sport and Recreation**

*Play for life!*

## MASTERS OF CEREMONIES



**TREVOR JENKINS**

**Conference MC**

*One of Australia's most respected radio and television sporting broadcasters and presenters. 30 years as sports presenter on ABC*



**SAM LONGLEY**

**Awards of Excellence MC**

*Actor, Comic, Writer, Director, Sam is one of Western Australia's favourite entertainers working in television, movies, and theatre for over 20 years.*

## CONFERENCE SPEAKERS



**THE RIPPLE EFFECT: HOW DO WE PLAN FOR HEALTHY COMMUNITY GROWTH?**

*Jacinta McCann, Executive Vice President, AECOM*



**LEADERSHIP FOR THE PEOPLE BEHIND THE PLACES & SPACES**

*Dr Troy Hendrickson  
Executive Education / Global Educator, Speaker and Consultant  
Curtin University*



## **COMMUNITY BENEFITS OF AQUATIC & RECREATION CENTRES**

*Dr John Tower, Senior Lecturer of  
Recreation & Sport Management,  
Victoria University*



## **7 SENSES DAY: CREATING LONG TERM VISION THROUGH SHORT TERM INTERVENTIONS**

*Tobias Volbert, Project Development  
Manager & Landscape Architect,  
Playscape Creations*



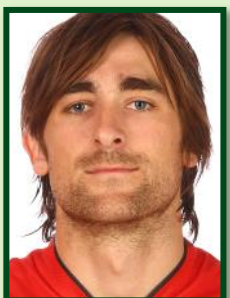
## **EFFECTIVE ISSUES MANAGEMENT & STAKEHOLDER COMMUNICATION**

*Tony Dawe, Senior Account Director,  
Professional Public Relations*



## **JUSTIFY OR BUST: EXPLORING THE BENEFITS OF PARKS**

*Amalie Wright, Director,  
Landscapology  
Author, Future Parks:  
Imagining Tomorrow's Urban Park*



## **ENGAGEMENT THROUGH SPORT & ALTERNATIVE ACTIVITIES**

*Brad Robbins, Inspired Living  
Foundation; Former Wildcats  
Captain*



## **A SUSTAINABLE FUTURE FOR COASTAL AUSTRALIA**

*Mayor Barry Sammels, City of  
Rockingham ; Chair of Australian  
Coastal Councils Association*



## **A PLACE BASED APPROACH TO BUILDING RESILIENCE**

*Liz Johnstone, Associate Director -  
Sustainability; Rockefeller 100  
Resilient Cities*



## **WHAT WILL IT MEAN WHEN THE FULL IMPACT OF OUR AGEING COMMUNITIES BEGINS TO EMERGE?**

*Dr Ann Zubrick, COTA (WA) Council on  
the Ageing WA*



## **DESIGNING RESILIENT FACILITIES FOR THE FUTURE**

*Rory Martin, Research &  
Sustainability Leader, DWP/Suters*



## **THE TURNING POINT: HOW TREES MOVED FROM IRRELEVANCE TO PRE-EMINENCE.**

*Councillor Chris Cornish, City of  
Bayswater*



## **SOCIAL INFRASTRUCTURE BENCHMARKING - THE RESULTS ARE IN**

*David Lanfear, Associate Director,  
Davis Langdon*



## **SPORT & RECREATION & PUBLIC HEALTH**

*Dr May Carter, Senior Policy Officer -  
Recreation, Department of Sport and  
Recreation*





### GLYPHOSATE USE IN PUBLIC

#### PARKLANDS

*Willow Warren, Public Health  
Directorate of the Department of  
Health*



### BENCHMARKING: WHAT IS IT? WHAT DO YOU DO WITH IT? HOW CAN IT CHANGE THE WAY YOU OPERATE?

*Karl Mallet, City of Stirling*

**FOR PRESENTER'S ABSTRACTS AND BIOGRAPHIES PLEASE GO TO  
[WWW.EISEVERYWHERE.COM/EHOME/PLAWA16/401415/](http://WWW.EISEVERYWHERE.COM/EHOME/PLAWA16/401415/)**

## TECHNICAL TOURS

**FRIDAY 17<sup>th</sup> JUNE, Esplanade Hotel Fremantle**

### TOUR ONE: OPEN SPACE PLANNING AND ACTIVATION

**8.30am to 4pm**

Site 1: Carawatha Park (2015 PLA WA Award of Excellence Winner)

Site 2: Mills Park: 24 Hectares of Leisure Opportunities

Site 3: Kings Park Soldier Application

Site 4: Russell Brown Adventure Park

### TOUR TWO: FACILITIES IN THE SPOTLIGHT

**8.45am to 4pm**

Site 1: State Netball Centre

Site 2: Bold Park Aquatic Centre

Site 3: Mandurah Aquatic and Recreation Centre

### TOUR THREE: THINKING BIG: RECYCLING AND REVITALISATION

**9am to 4pm**

Site 1: Richgro: Anaerobic Digestion and Recycling Plant -  
Energy, Waste, Water

Site 2: Mills Park: 24 Hectares of Leisure Opportunities

### TOUR FOUR: SPORT, SURF, PLAY

**9am to 3pm**

Site 1: Wembley Sports Park

Site 2: City of Perth Surf Club

Site 3: West Australian Institute of Sport (WAIS)

For more information on the tours please go to [www.eiseverywhere.com/ehome/plawa16/tours](http://www.eiseverywhere.com/ehome/plawa16/tours)  
Tours have limited places and will sell out. Conference registration includes one tour.

# PLA WA STATE CONFERENCE PROGRAM

## THURSDAY 16<sup>th</sup> JUNE, Esplanade Hotel Fremantle

8.00am	Registration Opens - Arrival Tea and Coffee			Southern Cross Lobby
PLENARY SESSION - SIRIUS ROOM				
8.30am	Welcome and Overview of the Conference - Trevor Jenkins, MC Address from PLA WA President - Rachel Thorpe, PLA WA President Welcome to Country			
8:45am	THE RIPPLE EFFECT: HOW DO WE PLAN FOR HEALTHY COMMUNITY GROWTH? Keynote Speaker: Jacinta McCann Executive Vice President, AECOM			
9:30am	MORNING TEA & TRADE SHOW - SOUTHERN CROSS LOBBY			
	Concurrent 1	Concurrent 2	Concurrent 3	
10.00am	JUSTIFY OR BUST: EXPLORING THE BENEFITS OF PARKS Amalie Wright, Landscapology	SOCIAL INFRASTRUCTURE BENCHMARKING - THE RESULTS ARE IN David Lanfear, Davis Langdon  SPORT & RECREATION AND PUBLIC HEALTH Dr May Carter, Department of Sport and Recreation	EFFECTIVE ISSUES MANAGEMENT AND STAKEHOLDER COMMUNICATION Tony Dawe, Professional Public Relations (PPR) & Cheyne Cameron, City of Subiaco	
10:45am	THE TURNING POINT: HOW TREES MOVED FROM IRRELEVANCE TO PRE- EMINENCE. Councillor Chris Cornish, City of Bayswater	ACTIVATION OF POS Presenter TBA	BENCHMARKING: WHAT IS IT? WHAT DO YOU DO WITH IT? HOW CAN IT CHANGE THE WAY YOU OPERATE? Karl Mallet, City of Stirling	
11:30am	A SUSTAINABLE FUTURE FOR COASTAL AUSTRALIA Mayor Barry Sammels, City of Rockingham	WHAT WILL IT MEAN WHEN THE FULL IMPACT OF OUR AGEING COMMUNITIES BEGINS TO EMERGE? Ann Zubrick, COTA	ENGAGEMENT THROUGH SPORT AND ALTERNATIVE ACTIVITIES Brad Robbins, Inspired Living Foundation	

<b>12.15pm</b>	<b>LUNCH &amp; TRADE SHOW - SOUTHERN CROSS LOBBY</b>		
	<b>Concurrent 1</b>	<b>Concurrent 2</b>	<b>Concurrent 3</b>
<b>1.15pm</b>	<b>MANAGING BUSHLAND UNDER THE NEW BUSHFIRE MANAGEMENT GUIDELINES</b> Jackson Parker & Tim McNaught, Department of Fire and Emergency Services	<b>MILLS PARK: SIX STARS</b> Paul McAllister & Robbie Watkins, City of Gosnells	<b>COMMUNITY BENEFITS OF AQUATIC AND RECREATION CENTRES</b> Dr John Tower, Victoria University
<b>2.00pm</b>	<b>GLYPHOSATE USE IN PUBLIC PARKLANDS: THE FACTS AND REPUTABLE SOURCES OF INFORMATION</b> Willow Warren, Department of Health	<b>A PLACE BASED APPROACH TO BUILDING RESILIENCE</b> Liz Johnstone, Rockefeller 100 Resilient Cities	<b>SPORT TRENDS</b> Presenter TBA
<b>2:45pm</b>	<b>BREAK &amp; TRADE SHOW - SOUTHERN CROSS LOBBY</b>		
<b>3.15pm</b>	<b>CARRYING CAPACITY OF SPORTS GROUNDS</b> Presenter TBA	<b>7 SENSES DAY: CREATING LONG TERM VISION THROUGH SHORT TERM INTERVENTIONS</b> Tobias Volbert, Playscape	<b>DESIGNING RESILIENT FACILITIES FOR THE FUTURE</b> Rory Martin, DWP/Suters
<b>4.00pm</b>	<b>LEADERSHIP FOR THE PEOPLE BEHIND THE PLACES AND SPACES</b> Keynote Speaker: Troy Hendrickson		
<b>4.45pm</b>	<b>Official Conference Close - Trevor Jenkins, MC</b>		
<b>5.00pm-6.00pm</b>	<b>PLA WA Awards of Excellence:</b> Food and drinks will be served. Sam Longley, MC		
<b>6:00pm - 6.30pm</b>	<b>SUNDOWNER</b>		

# 16 - 17 JUNE 2016, ESPLANADE HOTEL FREMANTLE

3 Concurrent Streams • 18 Sessions • Trade Show • 4 Technical Tours

PLA WA Awards Ceremony

Members - \$550+GST Non-members - \$650+GST

[www.eiseverywhere.com/ehome/plawa16/welcome/](http://www.eiseverywhere.com/ehome/plawa16/welcome/)

- Registrations close 19 May