



U.S. Customs and Border Protection

The Why and How of Modern Surveillance Technologies

Colleen Manaher – Executive Director
Planning, Program Analysis and Evaluation – DHS | CBP | OFO



U.S. Customs and Border Protection

A Formidable Biometrics Safety Net

.....

A Success Story



Biometrics



In 2013 CBP takes the lead on Entry/Exit Mission



CBP by the Numbers

Duties of a World Class Law Enforcement Agency

60,000

CBP Employees
covering 26 million square
feet of mission space

1,000,000

Air Travelers a Day
are screened by 20,000
dedicated CBP Officers

6,000

Miles of Land Border
with Mexico and Canada
and over 2000 miles of
coastal waters

70,000

Cargo Containers
are inspected daily at
over 300 ports of entry

Entry/Exit Mission

.....

Reinforce the integrity of the multi-layered Border Security enterprise by deploying cutting edge, biometric technologies to capture accurate entry and exit data; transform the traveler experience; and drive efforts to combat criminal and terrorist travel.

Improvements must be made end-to-end holistically – from Entry to Exit – to be most effective.



Objectives



Entry

Match arrival and departure records on foreign nationals



More Informed Decisions

Increase and improve the availability of Exit data for decision makers



Law Enforcement

Extend the zone of U.S. Security, and lead partner law enforcement agencies in information sharing and innovation



Adopt Biometrics

Test and evaluate emerging biometric technologies



Mitigate Risk

Integrate viable, secure, and cost-effective solutions



Unity of Effort

Share information with other law enforcement agencies and support a DHS Unity of Effort

Logistical & Operational Challenges



Infrastructure

U.S. Airports and land border POE's were not designed to accommodate exit processing



Limitations on Mobile

Mobile hardware is limited by issues of reliable and secure wireless access and storage capacity



Staffing

New Exit screening processes require additional officers handling concurrent departures



Disruption of Traffic

We must minimize the impact of new biometric technology on the existing departure process



Remote Locations

Hardware must be portable and perform in rugged conditions with limited access to a network



Communication

Ensuring foreign travelers and key stakeholders are fully informed, prepared, and understand the benefits of the new biometric exit requirements to secure and facilitate travel

Airport Environment



→ Inconsistency of Space

Within the same airport, the designs of terminals, and gates vary widely with limited boarding time allotment and limited time for law enforcement action

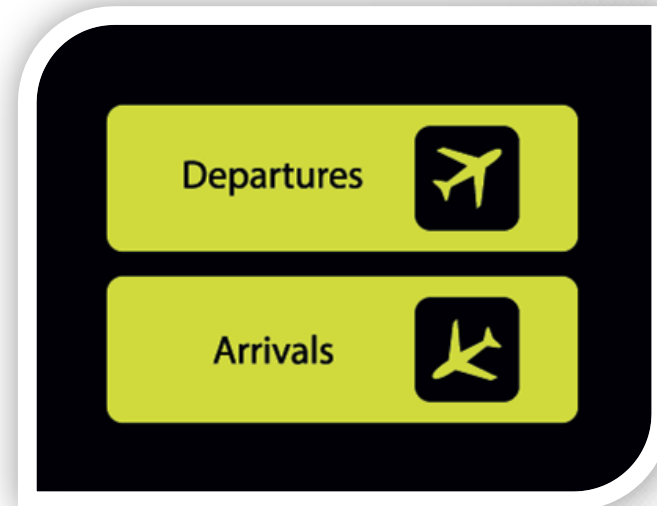


Airport Environment



Mixed Use Terminals

International terminals service domestic and international passengers



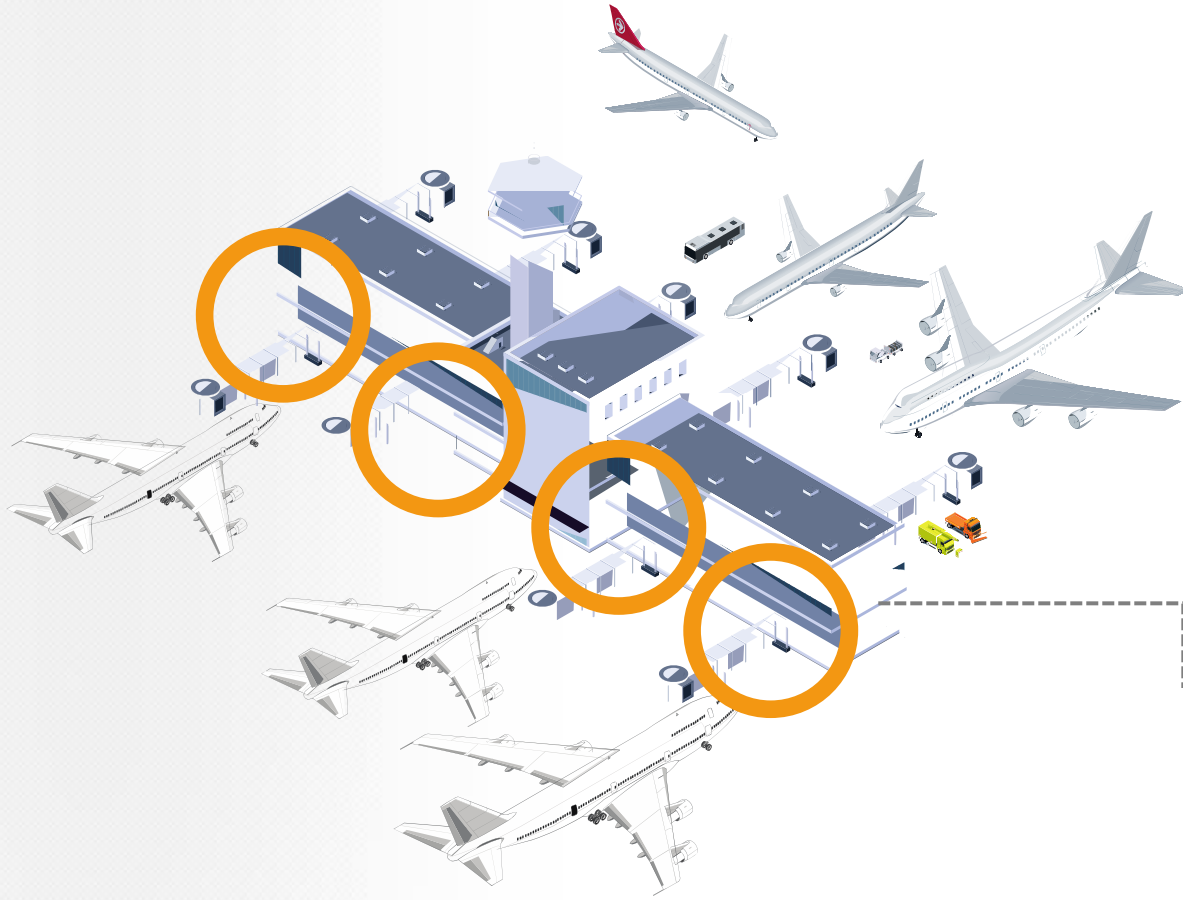
Airport Environment



Comingled Passengers

US Citizens and Non-US Citizens are blended within the same terminals and International travelers arrive on other domestic flights prior to departure

Airport Environment

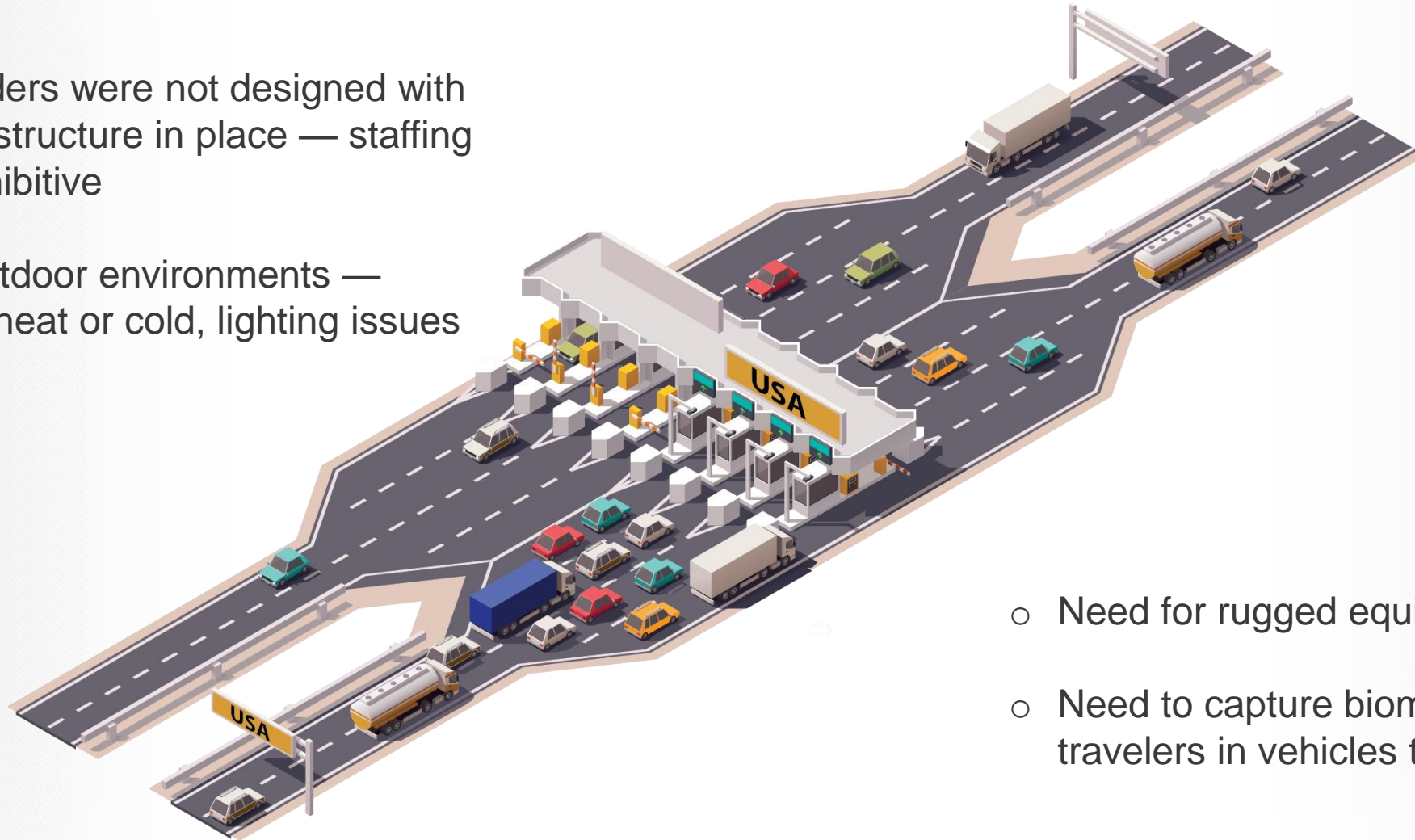


Deployment Costs

Must leverage new technology while managing the costs of widespread rollout

Land Border Environment

- U.S. borders were not designed with Exit infrastructure in place — staffing cost-prohibitive
- Harsh outdoor environments — extreme heat or cold, lighting issues



- Need for rugged equipment
- Need to capture biometrics of travelers in vehicles traveling at speed

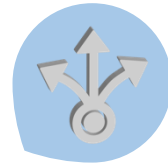
Importance of Departure Control

Departure Control Strengthens the Integrity of the Immigration System



Overstays

Identifying foreign nationals who overstay the lawful period of admission, enabling law enforcement actions



Common Operating Picture

Complete picture of who is entering and leaving our country, integrated across the law enforcement community



Threat Detection

Providing law enforcement and national security information for threat detection and risk assessment

Technology Limitations

Wireless Access

Secure, wireless access issues in austere environments



Databases

Reliance on database updates



Adaptability

Promising technologies not adaptable, rugged or easy to move for widespread deployment

Device Storage

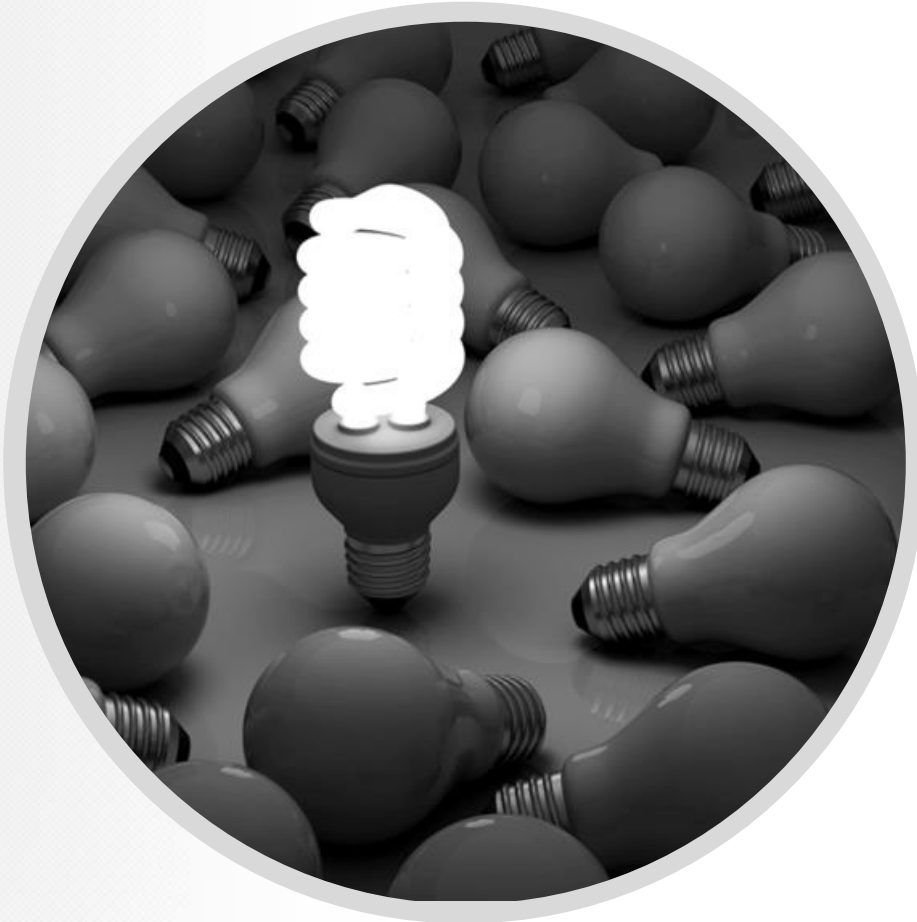
Storage capacity limitations on devices and images require more storage space than fingerprints

Simulated Testing

Manufacturers must test in real (not lab/artificial) conditions to ensure operational integrity

How do we innovate our way out of this?

We're Committed to Writing a Whole New Playbook for Entry/Exit Processing



1

Close Biographic Gaps

Improve biographic Entry/Exit matching and reporting across all modalities

2

Targeted Biometric Operations

Implement short-term biometric solutions based on priority and risk

3

Transform Processes

Evaluate processes and non-intrusive biometric solutions to transform operations

Close Biographic Gaps

Improve Biographic Matching and Reporting



Robust Matching Capability

Assessing biographic data on foreign nationals entering and exiting via air/vessel manifests



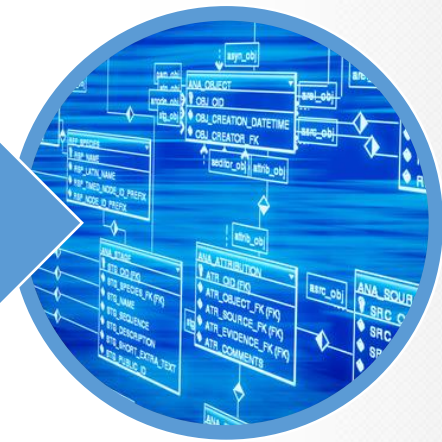
Canada Data Exchange

Implementing northern border biographic Entry/Exit system via data exchange



Mexico Data Exchange

Identifying biographic data sharing opportunities



Arrival Departure Information System

Leveraging an aggregation system that contains the travel history and overstay status for over 309 million individuals

Targeted Biometric Operations

Implement Short-term Biometrics Pilots based on Priority and Risk



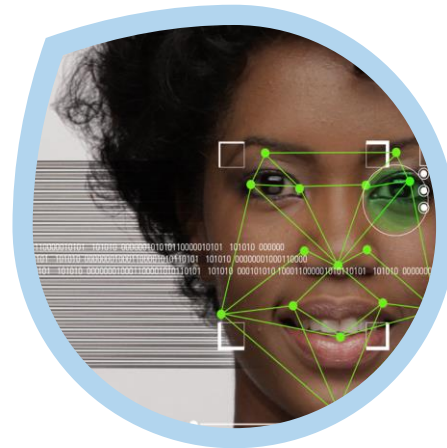
1:1 Face ePassport Entry Pilot

Confirm the identity of travelers presenting travel documents to enter the U.S.



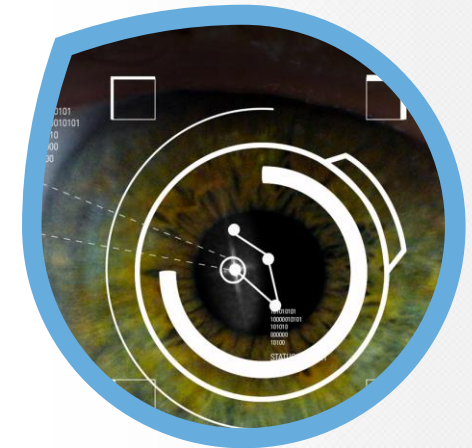
Biometric Exit (BE) Mobile

Confirm with certainty that a foreign traveler has departed the U.S



Pedestrian Biometric Field Test - Entry

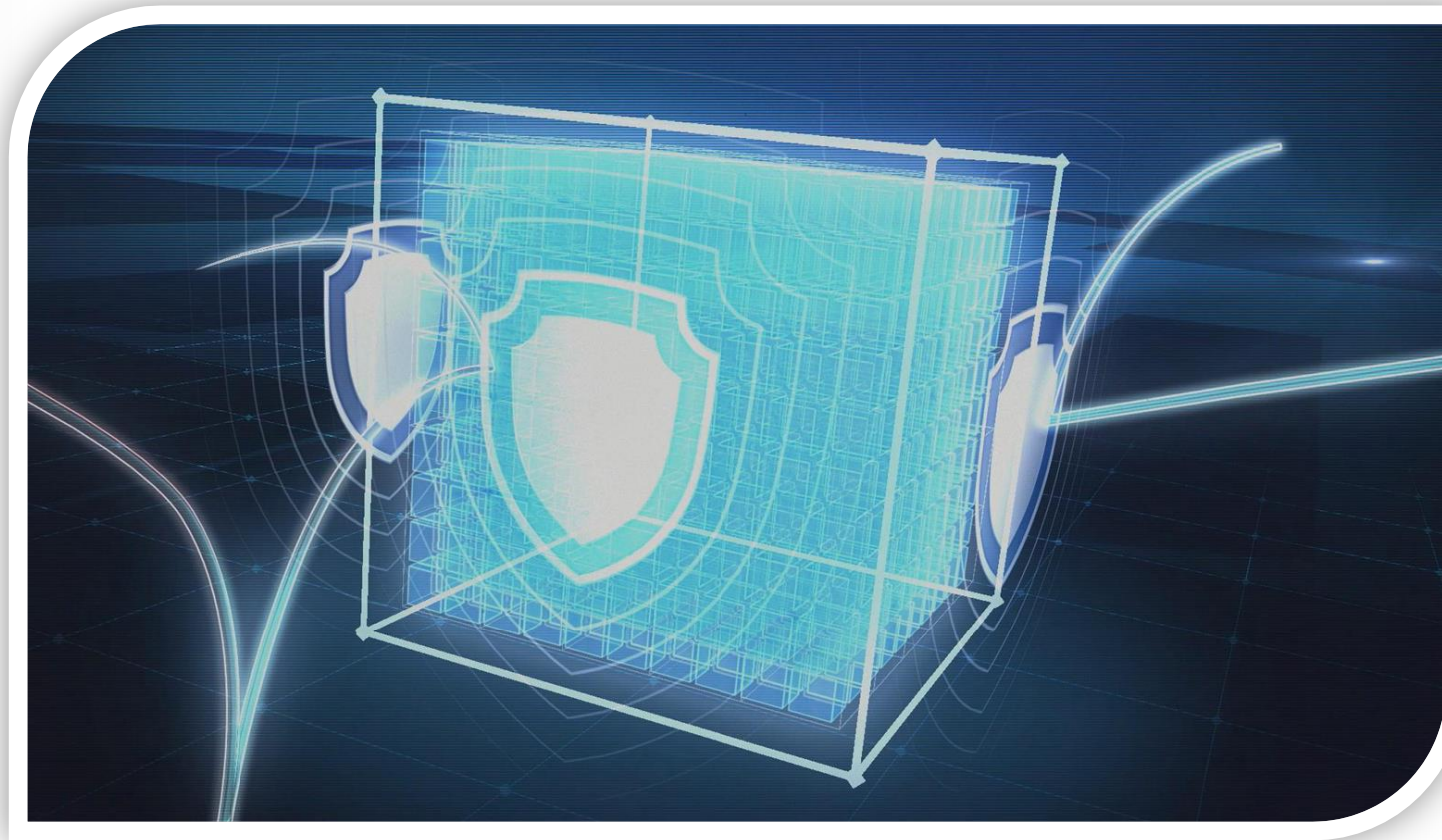
Determine if facial/iris capture can be incorporated into current Entry process without significant impact



Pedestrian Biometric Field Test - Exit

Test viability of facial/iris image capture in an outdoor land Exit environment

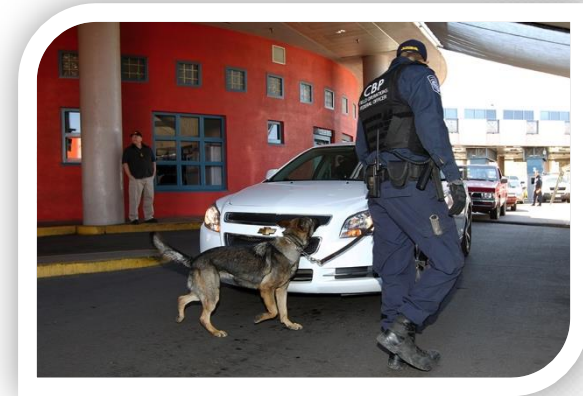
Privacy



CBP has procedural and physical safeguards in place to ensure traveler data is securely protected

Global Security is a Shared Mission

Build Alliances & Sharing Best Practices





U.S. Customs and Border Protection

THANK YOU

MERCI

СПАСИБО

GRACIAS