



THE WCO DATA MODEL

***CROSS-BORDER TRANSACTIONS
ON THE FAST TRACK***

**More About Information Packages &
The Future of the WCO Data Model**

World Customs Organization



- Balance Standardization and Flexibility
 - Harmonized information Requirement
 - National Sovereignty
- Reusable Template
- Basis for understanding international standards/
convention

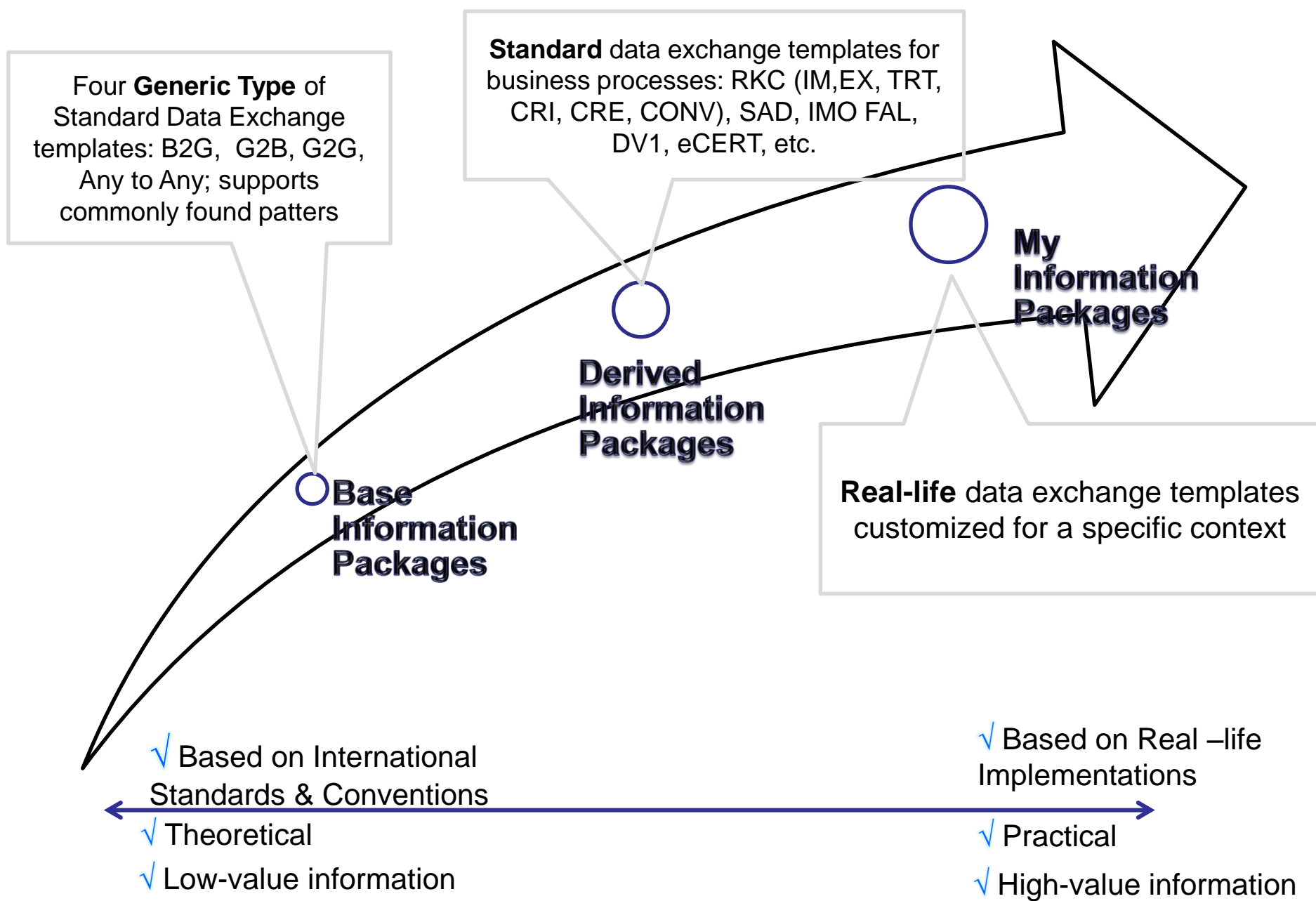
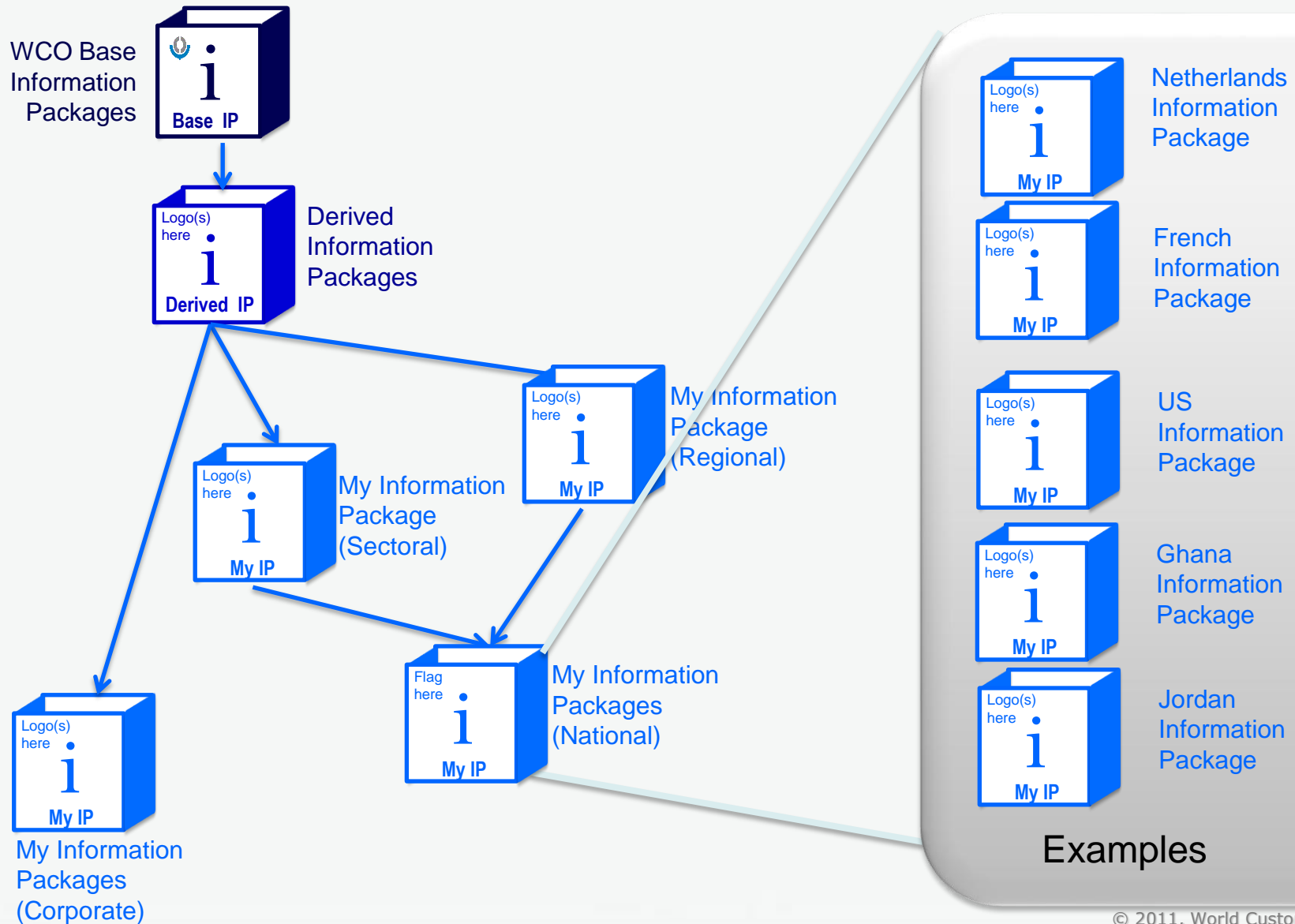


Diagram: Organization of Information Packages



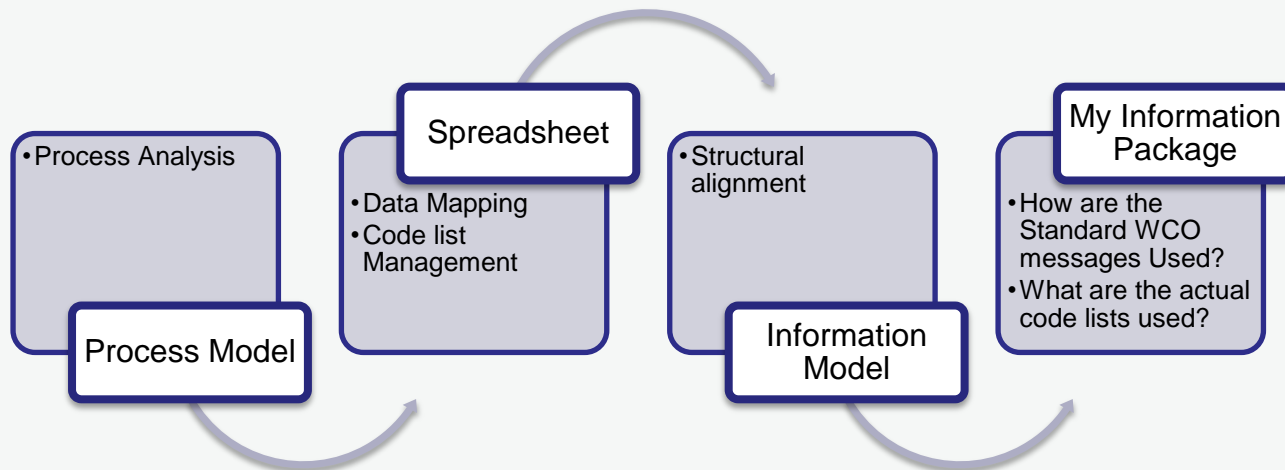
THE WCO DATA MODEL

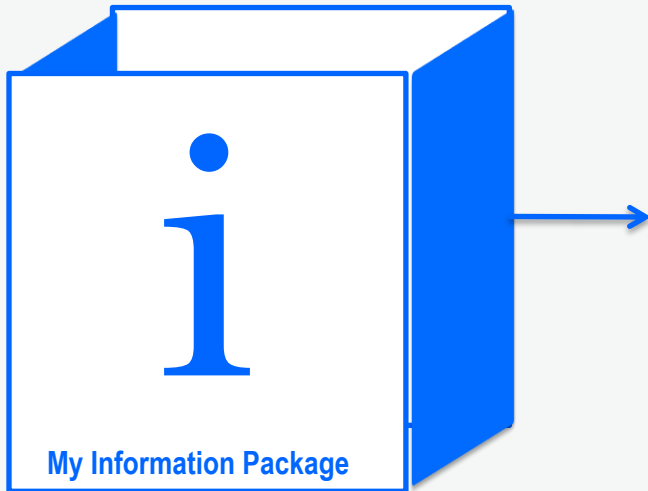
My Information Packages National





My Information Package =Adoption of the WCO DM





‘My Information Package’ is my data requirements understood and explained in terms of the WCO Data Model

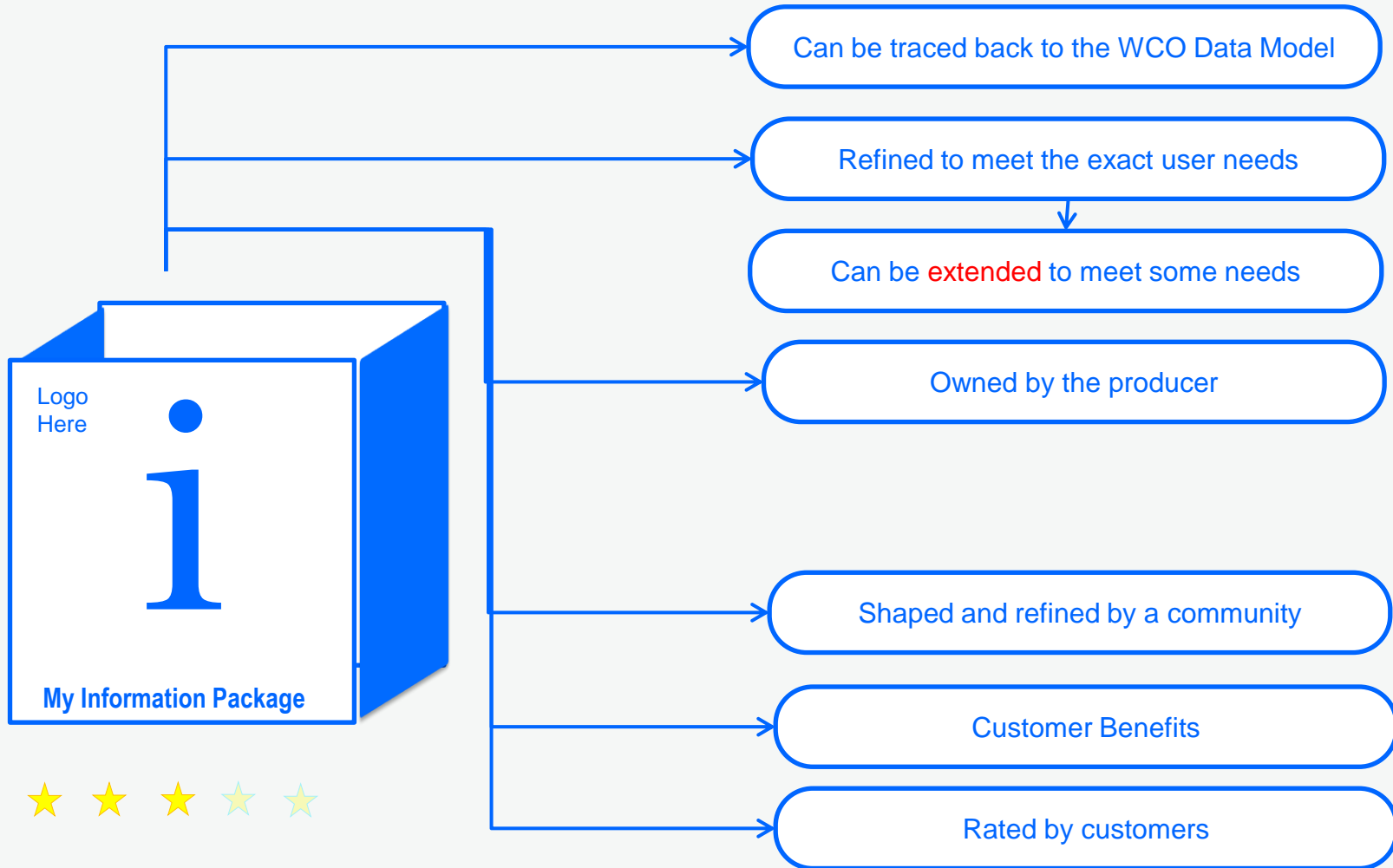
‘My Information Package’ is a self contained package of structured information about an **actual** implementation

My Information Package is arranged in a standardized structure and can be read into applications.

My Information Package is a good fit for the manner in which developers understand information exchange



My Information Packages





How to inform stakeholders about the adoption of the WCO Data Model?

- Press Release
- Publishing Informative material
- Publishing Technical documentation
 - Message Implementation Guidelines
 - Dataset/ Data Mappings
 - XML Schemas
 - Implementation notes
 - Forms and Box Completion Guidelines



THE WCO DATA MODEL

Dataset

I	Name	Definition	Class Name	Form	Code List
4	Reservation number of shipment	Reference number assigned by a carrier or its agent to identify a specific consignment	Consignment	an..35	
6	Sequence number	Number indicating the position in a sequence	ArrivalConveyanceFacility, Bunker, CallPurpose, CarriedTransportEquipment, Commodity, Consignment, ConsignmentItem, DepartureConveyanceFacility, Effects, EntryOffice, GoodsShipment, GovernmentAgencyGoodsItem, Invoice, InvoiceLine, Itinerary, Packaging, PersonOnBoard, Pointer, Process, Seal, ShipToShipActivity, StoresItem, TransitOperation, TransportEquipment, WasteItem	n..5	
9	Trader reference	A number assigned by a declarant such as a trader reference or a carrier reference	UCR	an..35	
10	Stay reference	An identifier of the stay of a means of transport in a port or airport or other place of service	BorderTransportMeans	an..35	
11	Carrier split consignment code	Code assigned by the carrier for each load of a split consignment	Consignment	an..3	EDIFACT codes (7365) subset (156 and 157)
13	Number of loading lists	The number of loading lists, manifests or similar documents	Declaration, LPCO	n..5	
14	Payment reference number	Reference number specifying a payment of a duty or tax	Payment	an..35	
16	UCR	Unique number assigned to goods being subject to cross border transactions	UCR	an..35	WCO (ISO15459) or equivalent
17	Message function, coded	Code indicating the function of a document	Declaration, InterGov, LPCO, Response	n..2	EDIFACT codes (1225)
19	Document/message status, coded	Code specifying the status of a document	Declaration, ObligationGuarantee	an..3	EDIFACT codes (1373)
23	Document acceptance date	Date on which a document has been or will be accepted in accordance with Governmental legislation	Declaration, IPR, LPCO, ObligationGuarantee	an..35	
24	Exit date	Date when the goods depart from last port, airport, or border post of customs territory whence consigned (country of export)	GoodsShipment	an..35	
25	Date of vaning	Date when the goods were containerized / Date when traders intend to stuff their goods into container at their premises, coded	StuffingEstablishment	an..35	
27	Duration of stay	The number of days a consignment is under transit control	TransitControl	n..2	
28	Birth date of Master/operator	Birth date of master of means of transport e.g. vessel master, pilot or driver	Master	an..35	
29	Consignment unloading date time	Date and time the cargo was outturned	BorderTransportMeans	an..35	
30	Departure date time	Date and optionally time of the departure of the goods from original consignor	GoodsShipment	an..35	
31	Consignment loading date	Date of initial loading onto ship or airplane during one journey from export place to import place	LoadingLocation	an..35	



THE WCO DATA MODEL

XML Example Message

Altova XMLSpy - [CRE_Declaration_Cancel]

File Edit Project XML DTD/Schema Schema design XSL/XQuery Authentic DB Convert View Browser Tools Window Help

```
1 <?xml version="1.0" encoding="UTF-8"?>
2 <DocumentMetadata xmlns="urn:wco:datamodel:WCO:DM:1" >
3   <WCODataModelVersion>3.2</WCODataModelVersion>
4   <WCODataModelName>CRE</WCODataModelName>
5   <CountryCode>NZ</CountryCode>
6   <AgencyAssignedCustomizedDocumentName>CRE</AgencyAssignedCustomizedDocumentName>
7   <AgencyAssignedCustomizedDocumentVersion>V1.0</AgencyAssignedCustomizedDocumentVersion>
8   <Declaration xmlns="urn:wco:datamodel:WCO:DeclarationModel:1">
9     <ID>XXXXXXXXXX</ID>
10    <TypeCode>CRE</TypeCode>
11    <FunctionalReferenceID>XXXXXXXXXX</FunctionalReferenceID>
12    <FunctionCode>1</FunctionCode>
13    <Submitter>
14      <ID>XXXXXXXXXX</ID>
15    </Submitter>
16    <AdditionalDocument>
17      <CategoryCode>XXX</CategoryCode>
18      <ImageBinaryObject mimeType="application/pdf" filename="XXXXXXXXXX">ATTACHED</ImageBinaryObject>
19    </AdditionalDocument>
20    <AdditionalInformation>
21      <StatementDescription>XXXXXXXXXX</StatementDescription>
22      <StatementTypeCode>AES</StatementTypeCode>
23    </AdditionalInformation>
24    <Declarant>
25      <ID>XXXXXXXXXX</ID>
26      <Communication>
27        <ID>XXXXXXXXXX</ID>
28        <TypeID>XXXXXXXXXX</TypeID>
29      </Communication>
30    </Declarant>
31  </Declaration>
32 </DocumentMetadata>
```

Text Grid Schema WSDL XBRL Authentic Browser

XMLSpy v2009 sp1 Registered to kAREN Garside (World Customs Organization) ©1998-2009 Altova GmbH

Ln 1, Col 1 CAP NUM SCRL

EN 21:37 11/05/2013

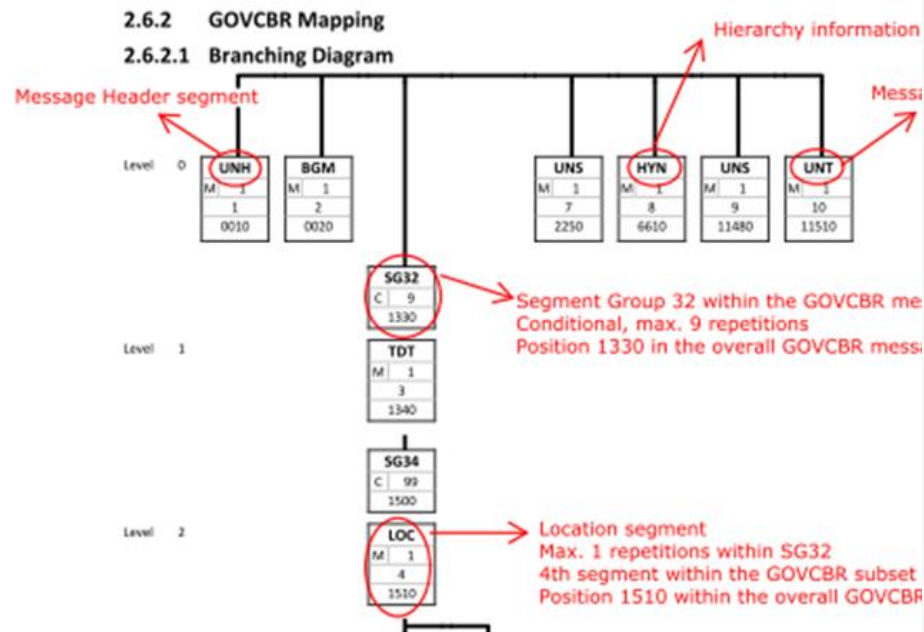
© 2011, World Customs Organization



EU Maritime Single Window (European MIG for MSW)

Section 2 – B2MSW

Message Implementation Guidelines Mapping to GOVCBR (EDIFACT)





Data Element Rules for CRE Response Message

WCO Data Element Name	WCO ID	WCO Definition	Format	TSW Description	Status	Rules and Conditions
		the Governmental Agency				
Declaration reference number	D014	Reference number identifying a specific document	an..35	TSW Reference Number	M	Will be transmitted to state the unique TSW reference number assigned to this transaction. Note: TSW Reference number 00000000 denotes the original transaction has not been stored by TSW (generally as a result of a fatal error). Once the errors have been corrected, the transaction can be resent as a type 9 (original). Do not quote 00000000 on the resend.
Document/message acceptance date and time	023	Date and time when the document/message was accepted	an..17 an3	Acceptance Date Time Date format code	C	Conditional – Will be transmitted where a lodgement has been accepted by an Agency to specify the date and time of acceptance of the Declaration Date Format CCYYMMDDHHMMSS (Date format code 204)
Functional reference number	D026	Reference number identifying a specific information exchange	an..14	Senders Reference Number	M	Will be transmitted to state the senders reference number stated for this transaction.
Version number	383	The sequential number that determines the version of a specific document/message number	an..9	Version Number	C	Where known will be transmitted to state the version number relating to this response
Document/message cancellation date and time	373	Date and time when the document/message was cancelled	an..17 an3	Cancellation Date Time Date format code	C	Conditional – Will be transmitted where a previously transmitted lodgement has been cancelled by



IMO GENERAL DECLARATION (Annotated)

BGM:C002-1001=185 or 186

☐ Arrival ☐ Departure

1.1 Name and type of ship SG9-TDT: 8051=20, C222: 8212, 8179 1.2 IMO number SG9-TDT: C222: 8213 1.3 Call sign SG7-COM: 3148. 3155=AW 1.4 Voyage number SG9-TDT:8028		2. Port of arrival/departure SG3-LOC: 3227=60 or 5, C517: 3225, 3224	3.Date – time of arrival/departure SG3-DTM: C507: 2005= 132 (ETA) or 178 (TA) or 133 (ETD) or 186 (TD), 2380 (CCYYMMDDHHMM), 2379=203
4. Flag State of ship SG9-TDT: C222: 8453	5. Name of master SG6-NAD: 3035= CPE, C080: 3036	6. Last port of call/Next port of call SG3-LOC: 3227=125, C517: 3225, 3224	
7. Certificate of registry (Port; date; number) SG4-DOC: C002: 1001=798, C503: 1004, DTM: C507: 2005=259, 2380 (CCYYMMDD), 2379=102, LOC: 3227=89, C517: 3225, 3224		8. Name and contact details of ship's agent SG6-NAD: 3035=CG, C058: 3124, SG7-CTA: 3139=BQ, C056: 3413, 3412, COM: C076: 3148, 3155=TE	
9. Gross tonnage HS MEA: 6211-AAN	10. Net tonnage HS MEA: 6211-AAN		



Adoption of the WCO Data Model

=

Availability of



My Information Package

WCO DATA MODEL: EVOLUTION

1996



Began in 1996 as a G7 initiative

- Primary Goal was trade simplification & harmonization

2001

- Focus on reduction in data requirements

2002

- G7 Data Requirements were simplified iteratively

- Was expected to be completed in two phases

 - First, for ordinary goods involving Customs only

 - Second, requirements involving Other Government Agencies

2006

- G7 Kyoto Data Principles

2009

2010

2011

2012

2013

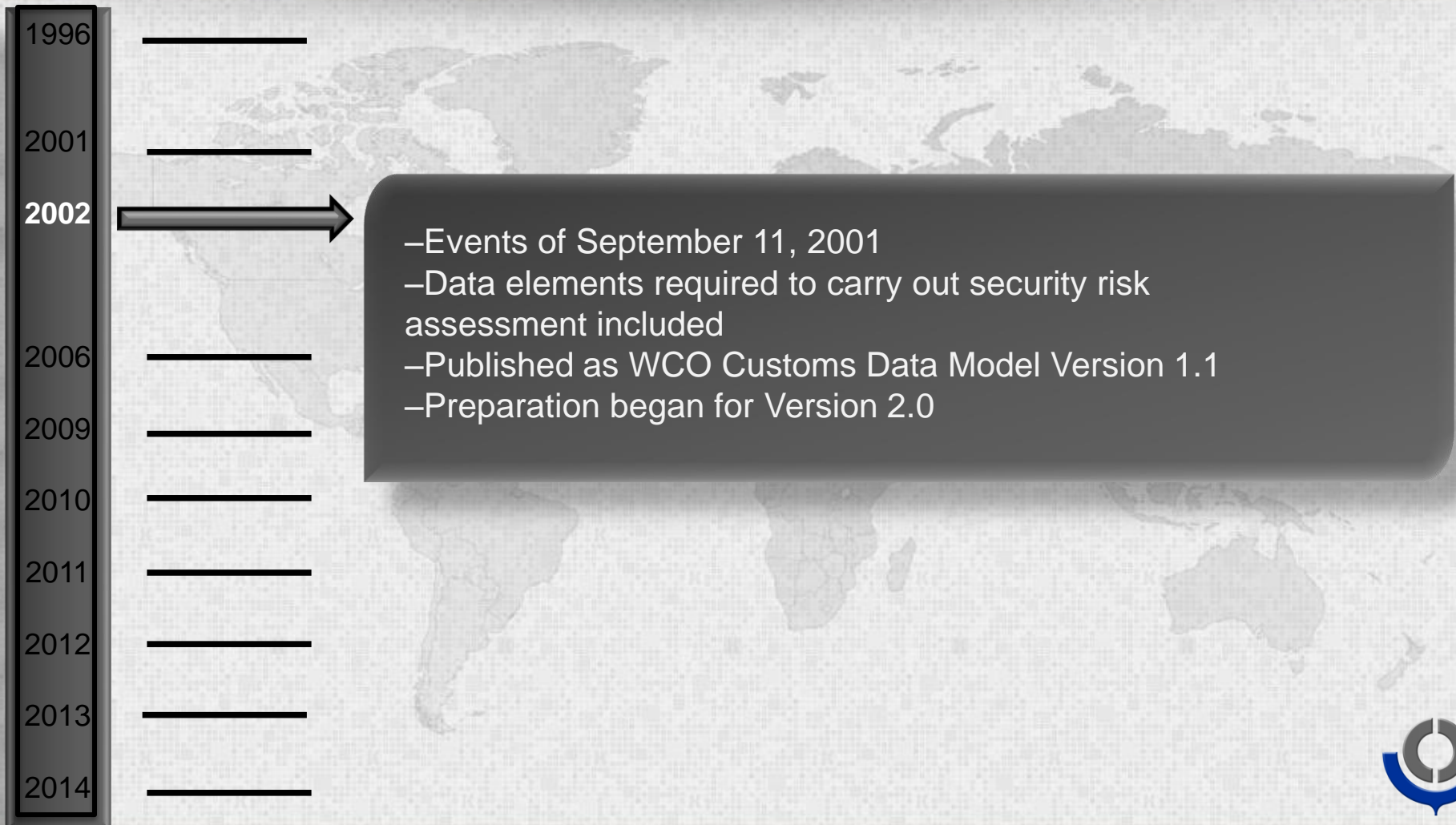
2014



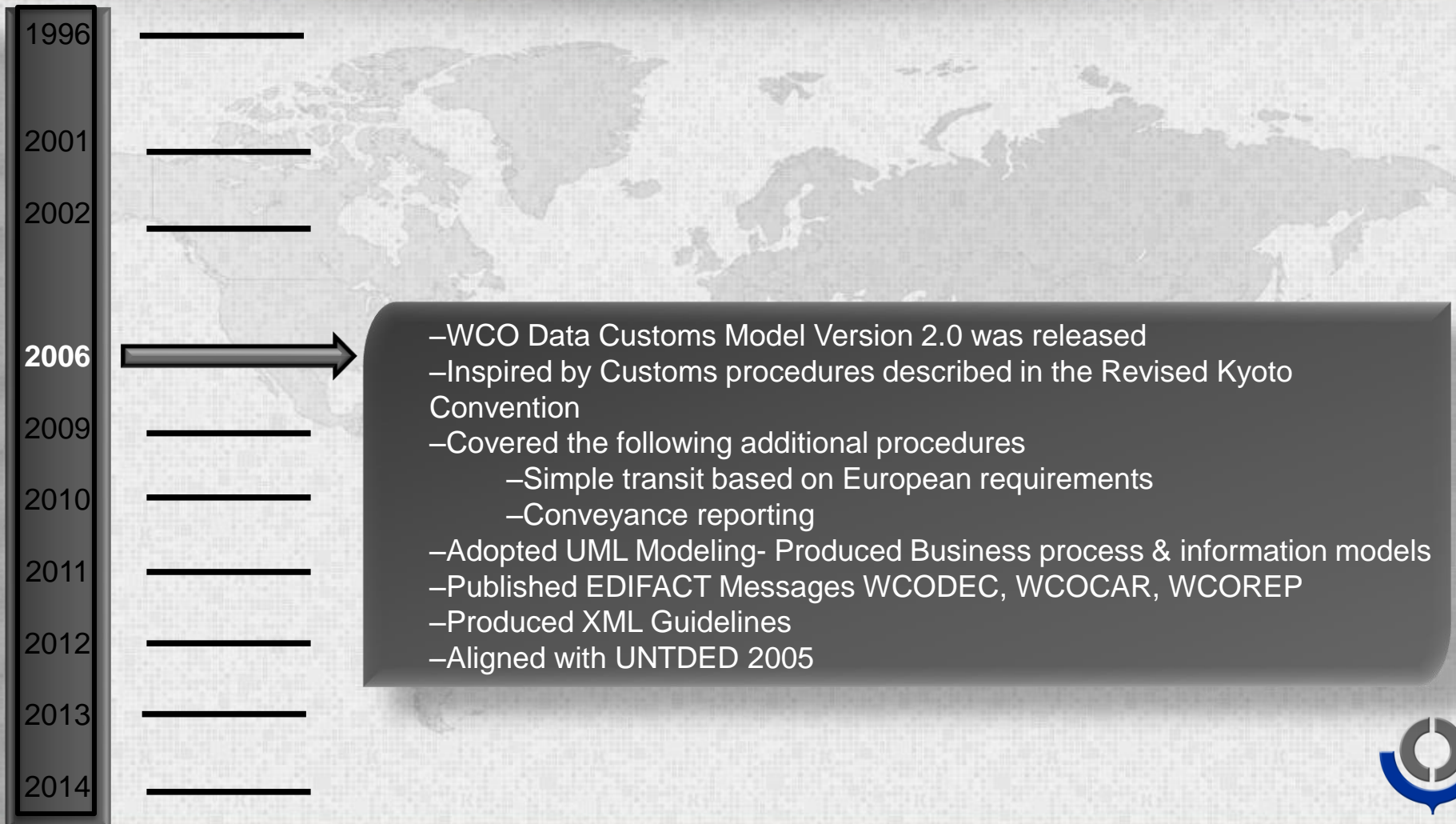
WCO DATA MODEL: EVOLUTION



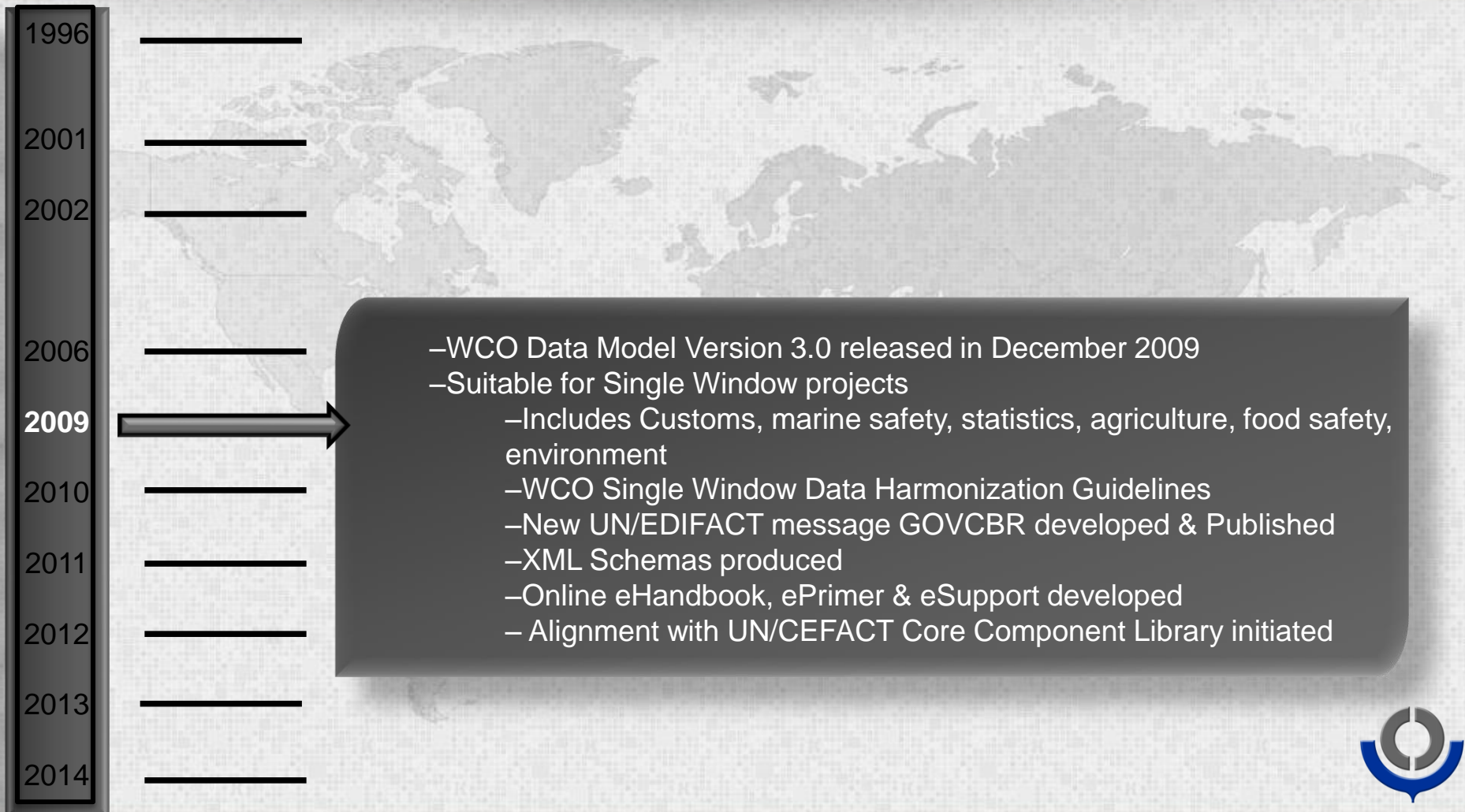
WCO DATA MODEL: EVOLUTION



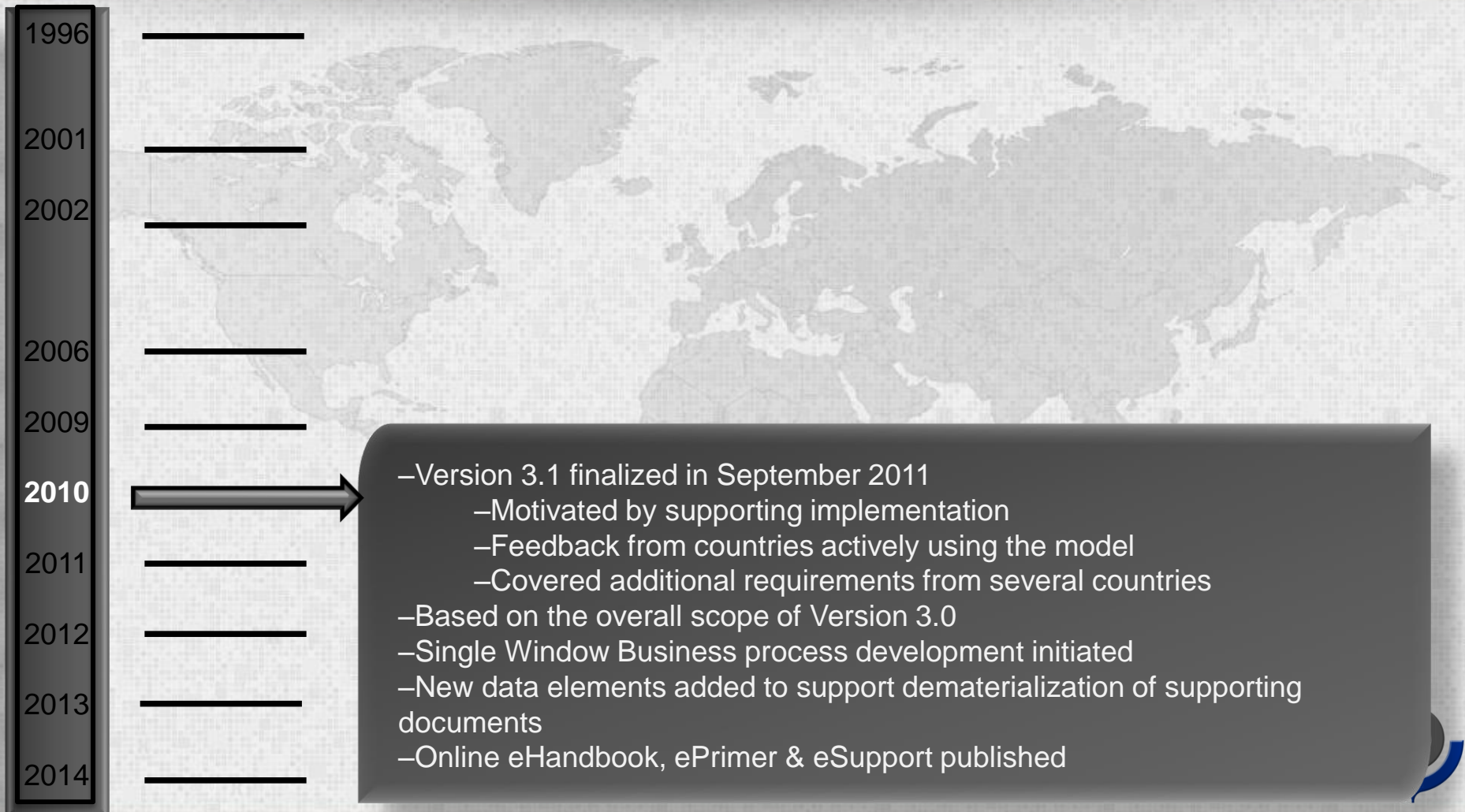
WCO DATA MODEL: EVOLUTION



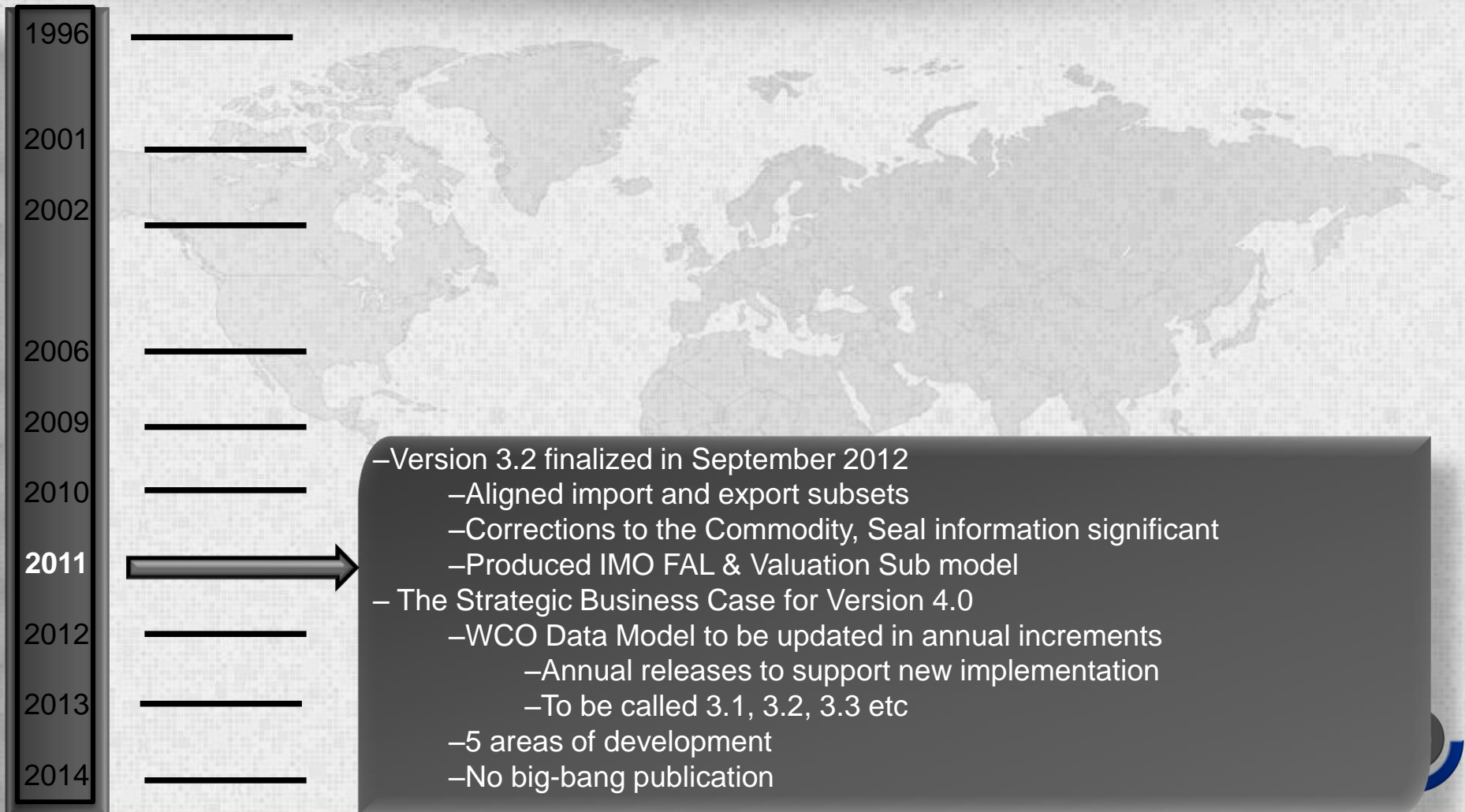
WCO DATA MODEL: EVOLUTION



WCO DATA MODEL: EVOLUTION



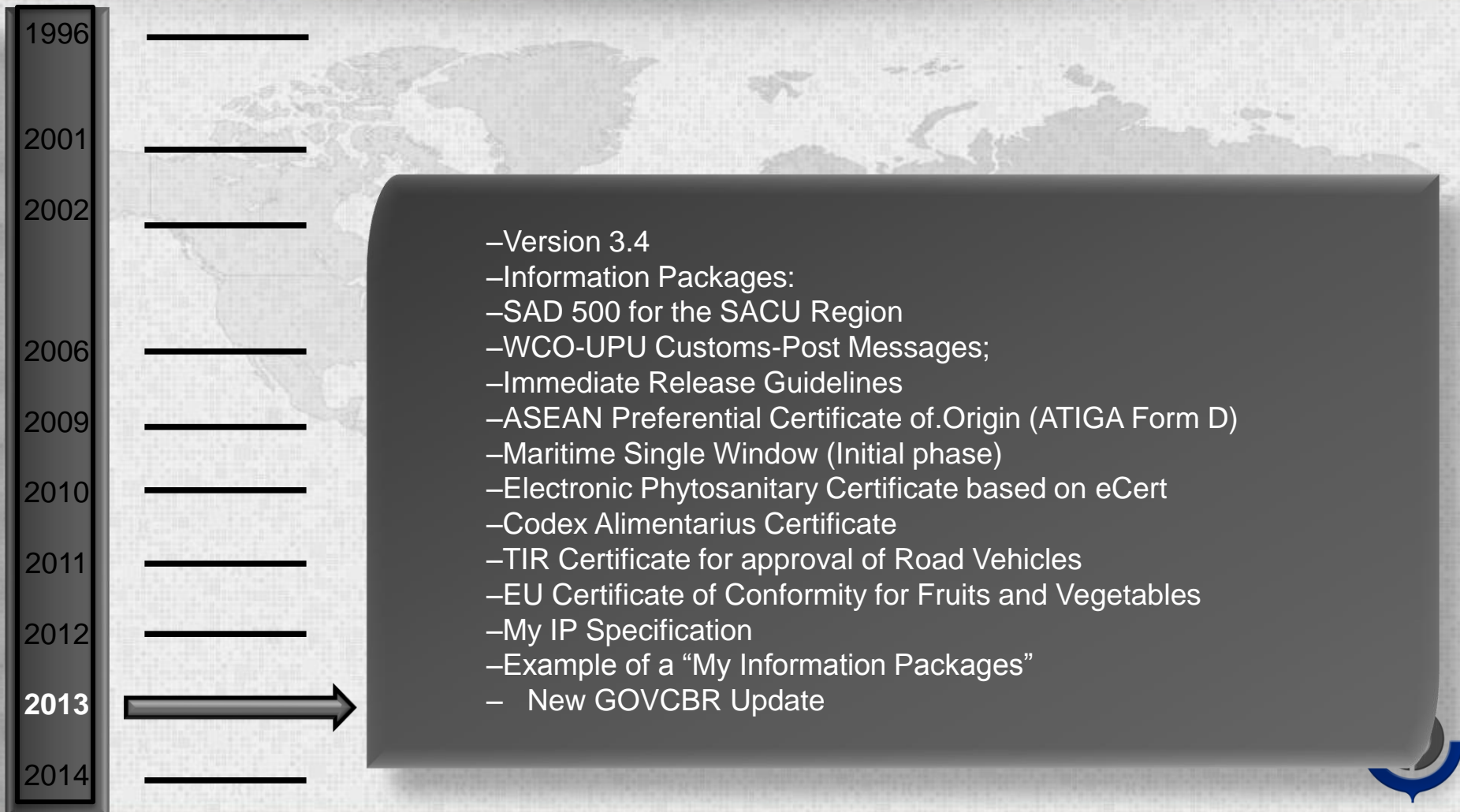
WCO DATA MODEL: EVOLUTION



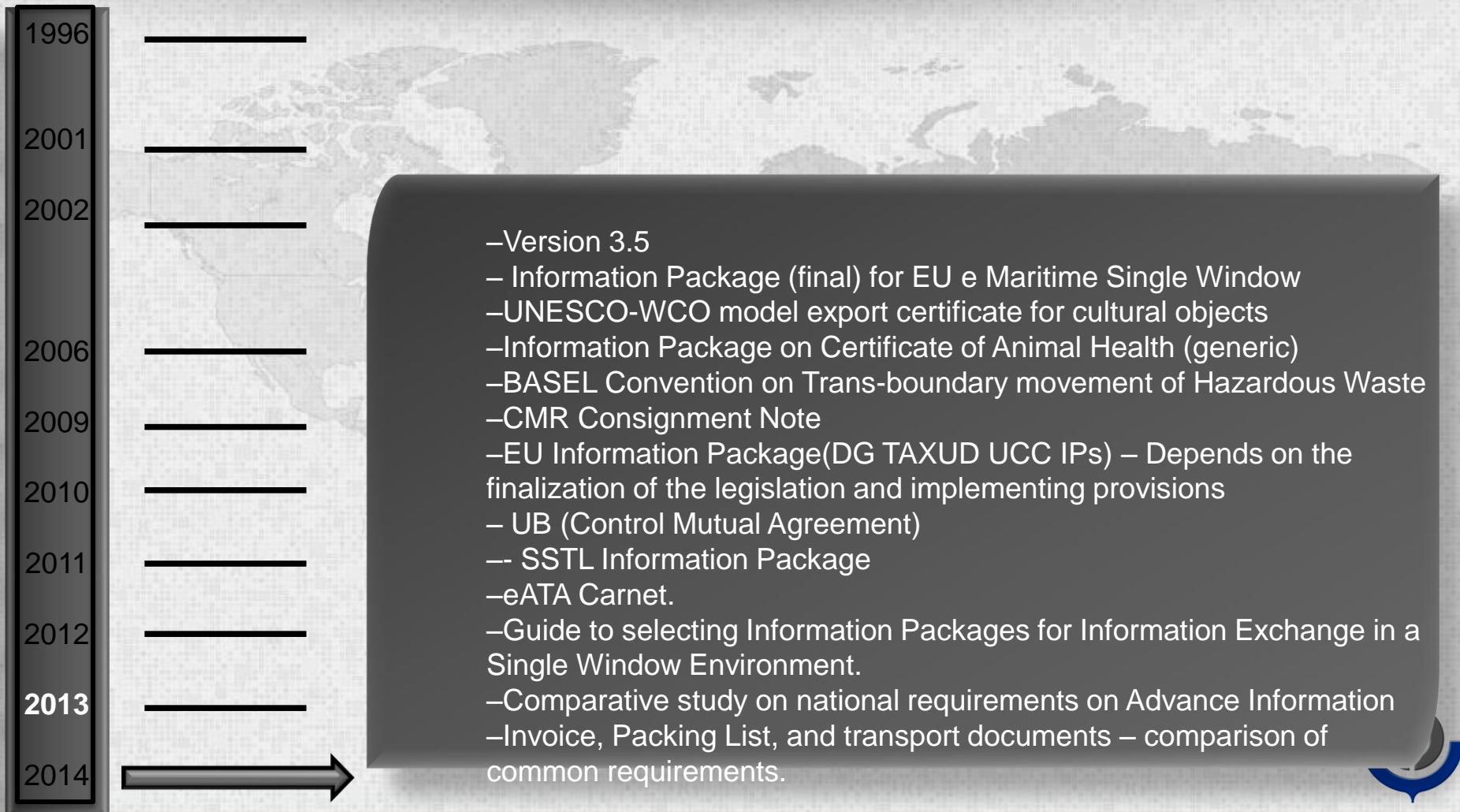
WCO DATA MODEL: EVOLUTION



WCO DATA MODEL: EVOLUTION



WCO DATA MODEL: EVOLUTION



WCO DATA MODEL: EVOLUTION





- Top Priority
 - Enhance business process modelling aspect
 - Enhance Documentation and Publication
 - Enhance Governance
- Continuous development:
 - Support implementations
 - More Information Packages for LPCOs
 - Additional Single Window requirements
 - Additional DIPs & MIPs
 - Supports Globally Networked Customs (GNC) Utility Block (UB)



- Harmonized and Simplified data requirements implemented globally by cross-border regulatory agencies
- Cross-border regulatory agencies align their data requirements and interface specifications with the WCO Data Model
- Uniform publication of the mapping and alignment (My Information Packages)



THE WCO DATA MODEL

Thank you for your attention !

Contact: tejo.kusuma@wcoomd.org