



# NEW TECHNOLOGIES FOR CUSTOMS

---

Mr. Weidong WANG  
Senior Vice President, NUCTECH  
June 2018



# THE CHALLENGES

01

Increasing Global Trade Flow

02

Change of Threats

03

Overload of Customs Operations

04

Expected Inspection Rate: 100%



The background is a deep blue space scene filled with numerous small white stars. There are also larger, wispy nebulae in shades of blue and white, particularly visible in the upper right and lower left. A semi-transparent dark blue rectangle is centered in the image, containing the text.

# PROPOSED SOLUTIONS

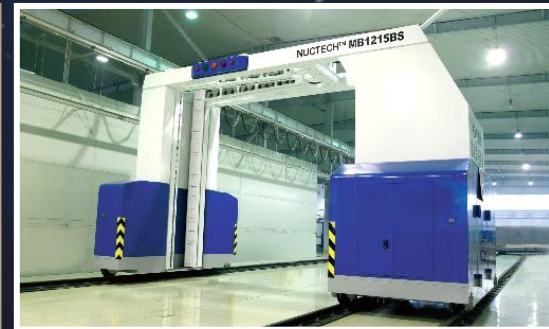
The background of the slide is a deep blue space scene. It features a large, ethereal nebula with wispy, glowing structures in shades of blue and white. Scattered throughout the dark blue void are numerous stars of varying sizes and brightness, some appearing as sharp points of light while others are slightly blurred. The overall effect is a sense of vastness and cosmic wonder.

# ENHANCED EXISTING SCANNING TECHNOLOGY



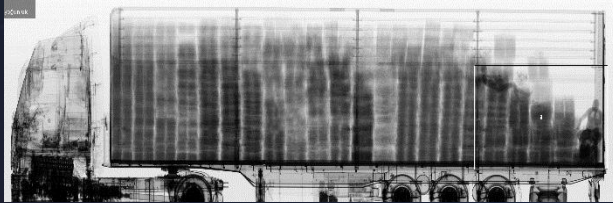
# ENHANCED SCANNING TECHNOLOGY

---

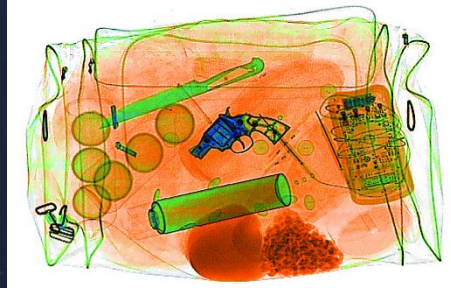


# ENHANCED SCANNING TECHNOLOGY

Single Energy



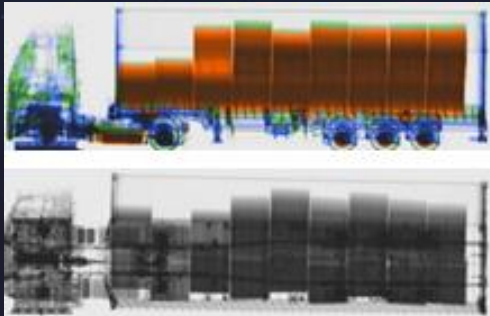
2D



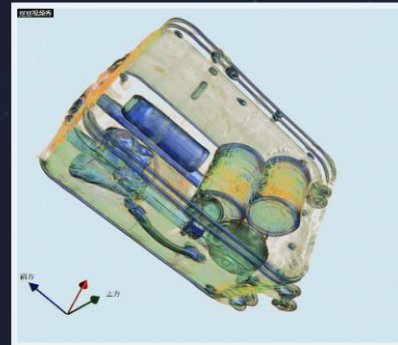
Low Throughput



Dual Energy



3D



High Throughput

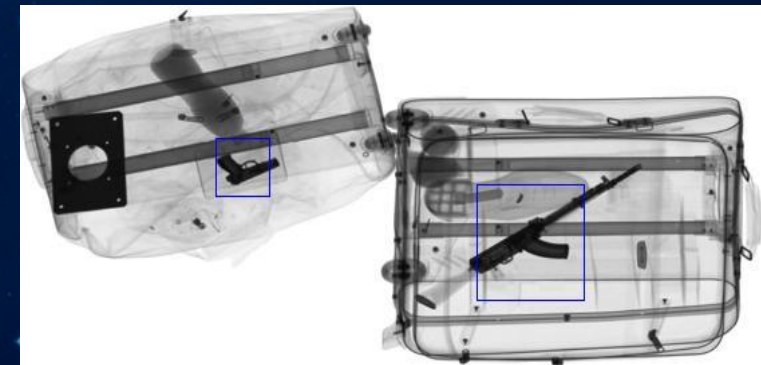
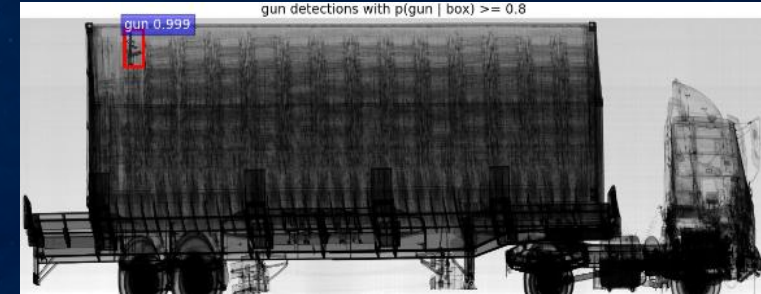
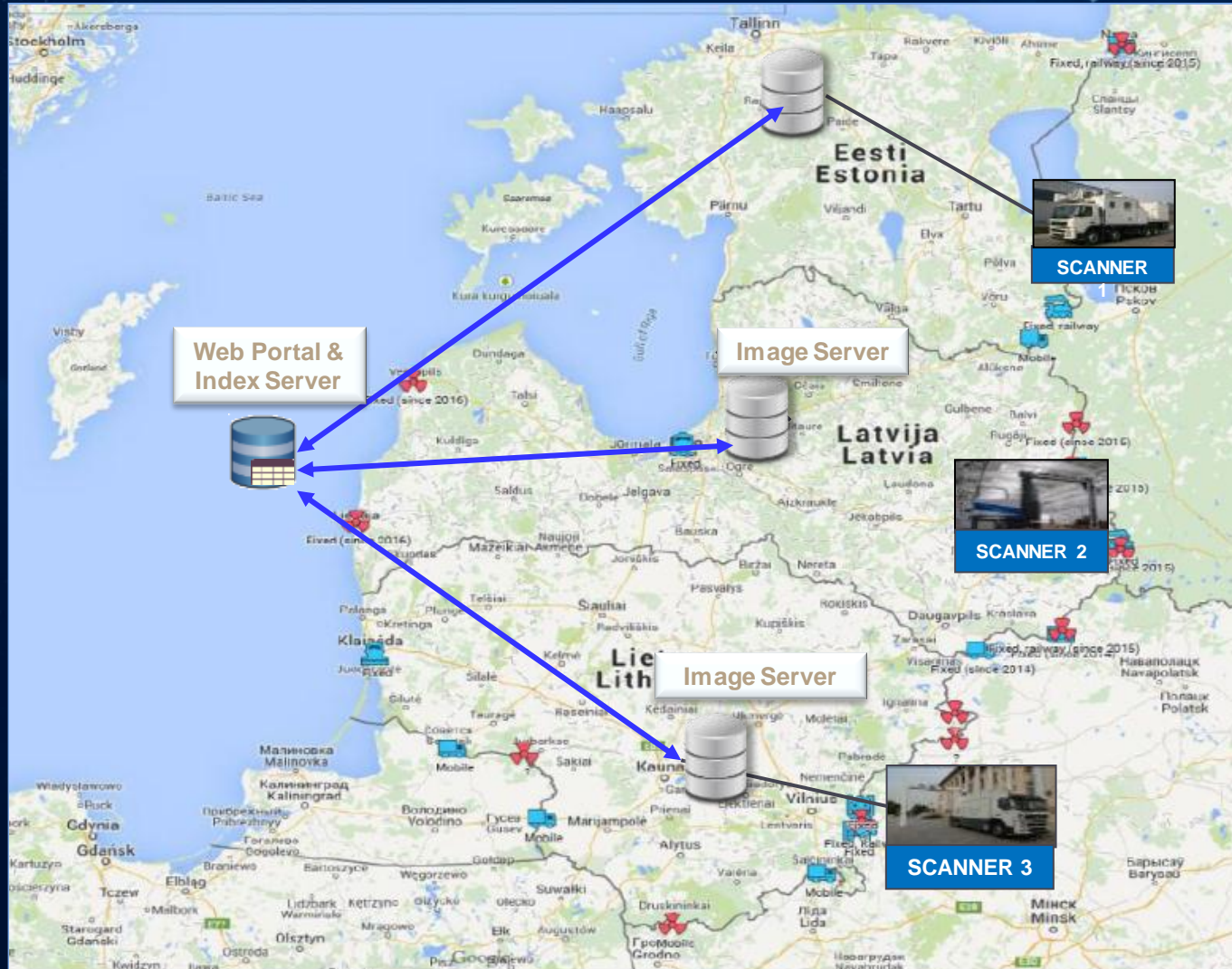




The background is a deep blue space scene. It features a large, ethereal nebula with wispy, glowing structures in shades of blue and white. Scattered throughout the dark space are numerous stars of varying sizes and brightness, some appearing as sharp points of light while others are slightly blurred. The overall atmosphere is cosmic and mysterious.

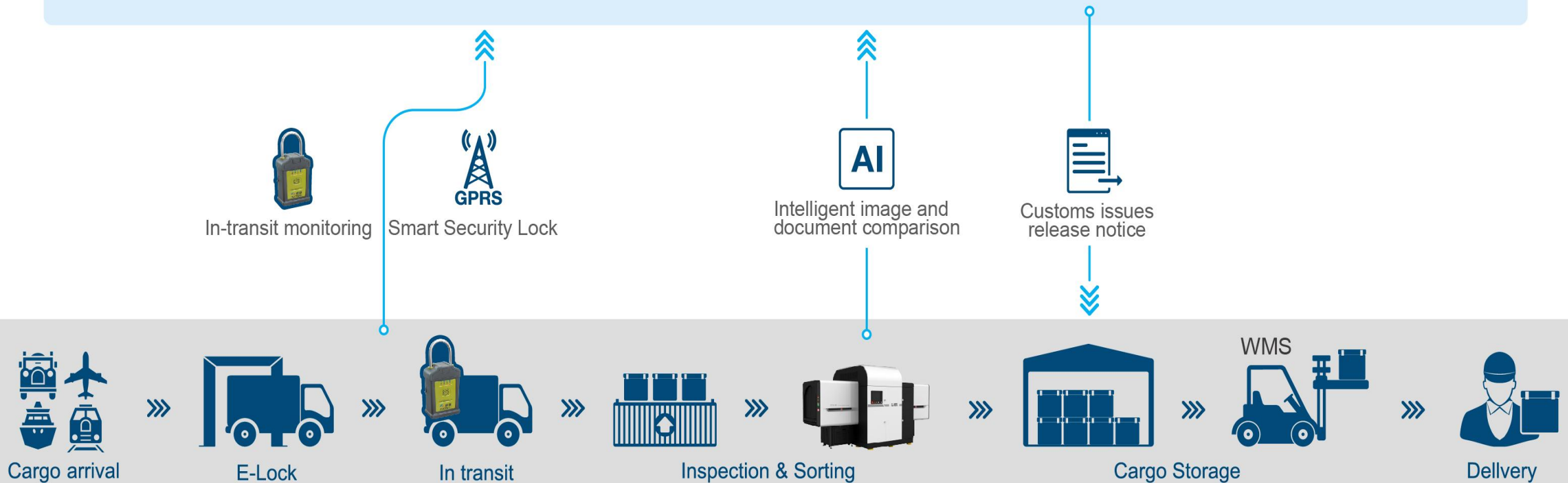
# CROSS-BORDER DATA SHARING

# INSPECTION RESULT IMAGE TRANSFERED BETWEEN CUSTOMS

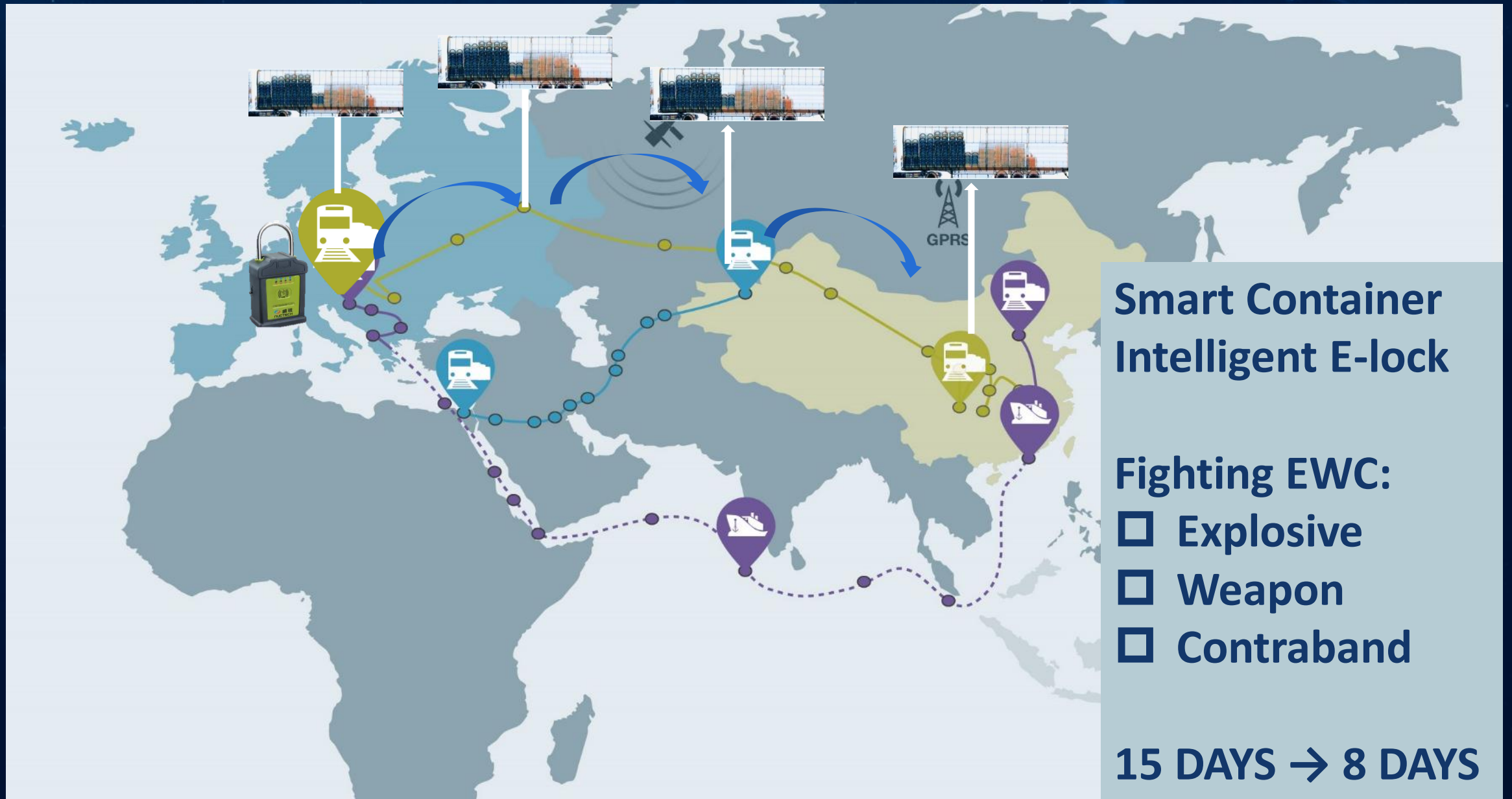




# CUSTOMS LOGISTICS SUPERVISION PLATFORM



# INSPECTION IMAGE SHARING ON RAILWAY CARGO





# INSPECTION IMAGE SHARING ON SEA CARGO



# CHINA-KAZAKHSTAN JOINT TESTING PROJECT



## Customs On-site Operation



## Shared Info

The Data of Pilot Shipment for the CTOP (Customs Train Operators Partnership for Expedited Clearance and Security of CR Express Carried Goods)									
Chongqing, China - Alma-Ata, Kazakhstan									
Manifest Data of Cargo from Departure Station									
Import and Export Border	Departure/Destination	Train No.	Railway Bill NO.	Wagon No.	Container No.	Departure Date	Description of Goods	Gross Weight	SHIPPER'S NAME
Alashankou	Tuanjie Cun Railway Station (Almaty)	X8084(CN)	D011868	5489871	TBJU7549785	2017.10.23	Notebooks PC	1967.4	HP Inc. Co Tech Front(Chongqing) Computer Co Ltd





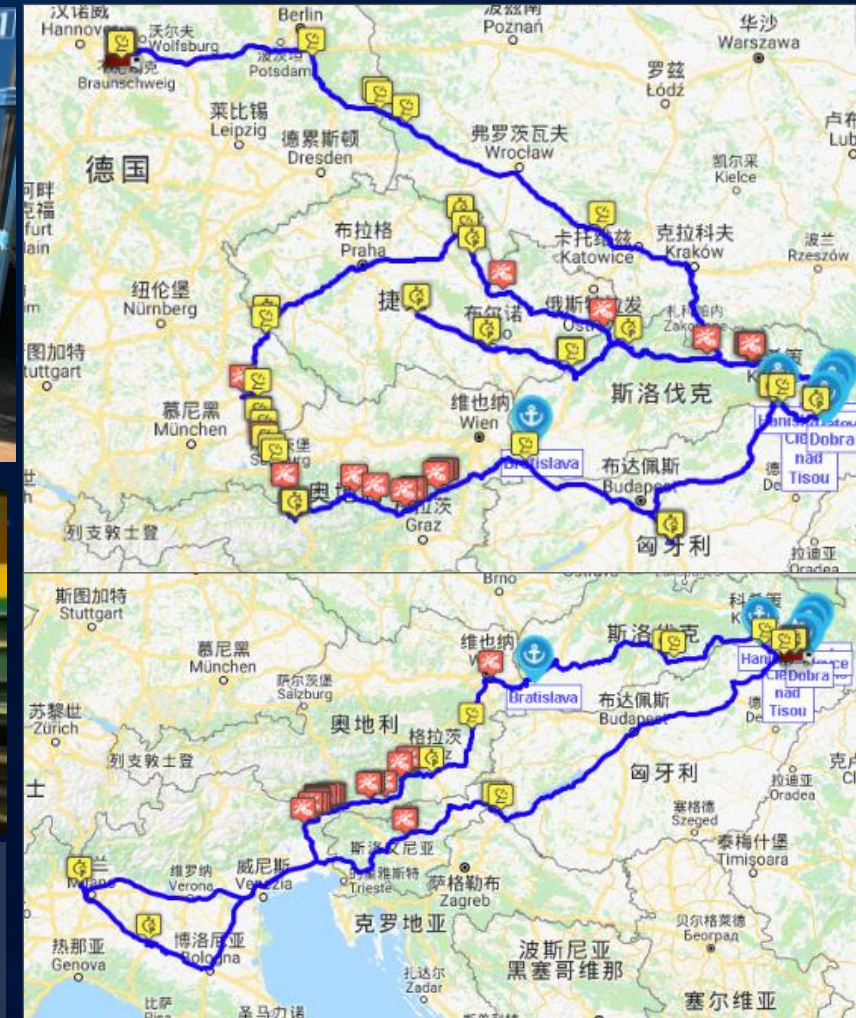
# RAILWAY EXPRESS-TESTING IN EUROPE COUNTRIES



Site Investigation



**Road Trip:** Slovakia, Hungary, Austria, Czech, Poland, Germany



The background is a deep blue space scene. It features a large, ethereal nebula with wispy, glowing structures in shades of blue and white. Scattered throughout the dark blue void are numerous stars of varying sizes and brightness, some appearing as sharp points of light while others are slightly blurred. The overall atmosphere is cosmic and mysterious.

# INSPECTION WITH AI



# INSPECTION WITH AI

## Quarantine



## Contraband



## BENEFITS

AUTOMATIC DETECTION OF  
EWC ITEMS

SIGNIFICANT IMPROVEMENT OF  
INSPECTION EFFICIENCY

BETTER CONDITION FOR  
TRADE FACILITATION



Expandable Libraries ...

## Taxable Goods



# INSPECTION WITH AI

---

**MANUAL CHECKING**

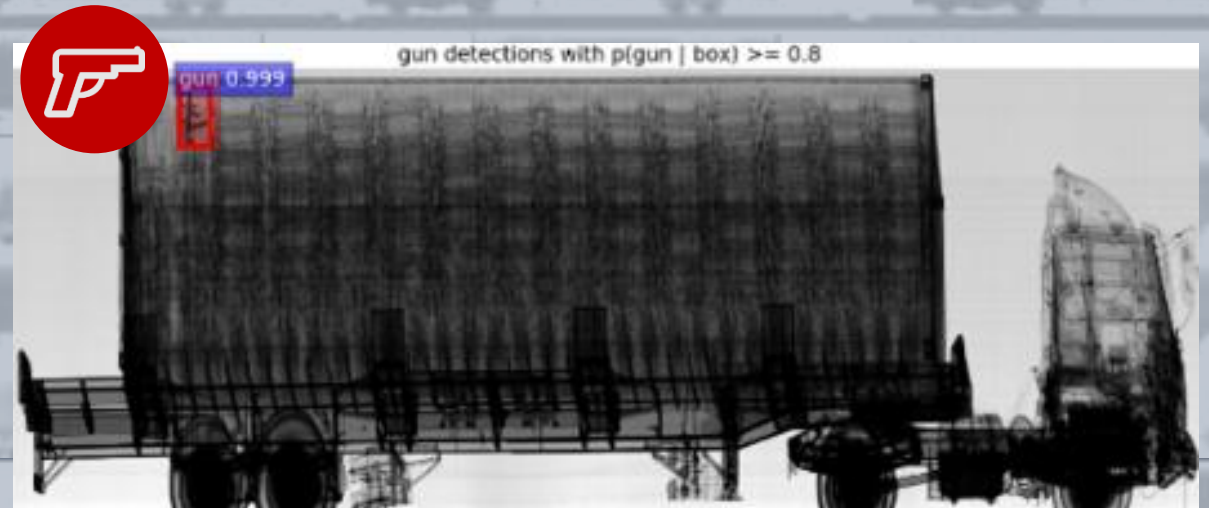
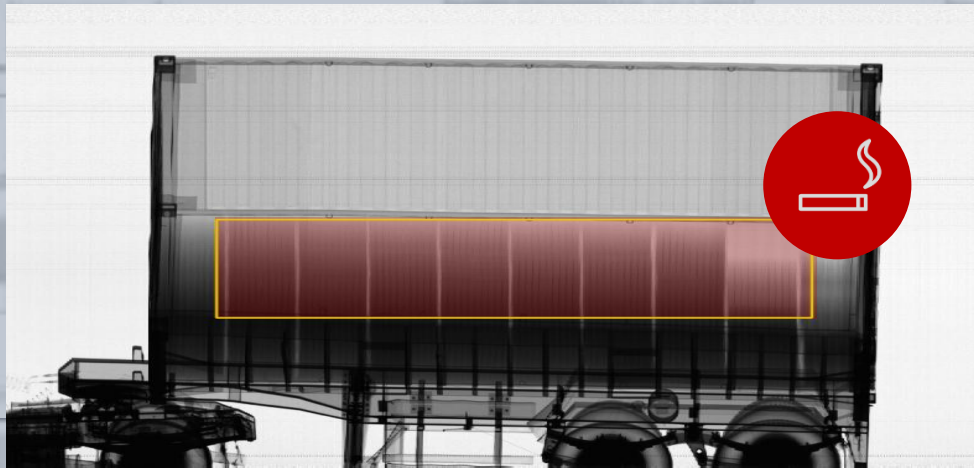


**AI+ NII**





# INSPECTION WITH AI



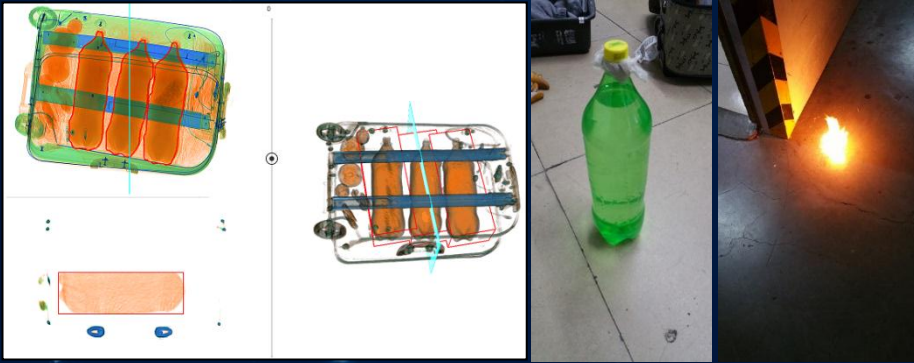
Cigarettes

Liquor

Weapon

# INSPECTION WITH AI

Flammable and explosive liquid formaldehyde in checked luggage



K powder (Ketamine) disguised as desiccant



Currency: HK\$ 2.0 million



Ice crystal tablets hidden in wooden crafts





# THANK YOU

---

