

Enhancing Practice 2022 Conference

*20:20 Vision – Transforming Our Future
Through Person-Centred Practices*

WEDNESDAY 6 – FRIDAY 8 APRIL 2022
SAGE HOTEL WOLLONGONG, NSW AUSTRALIA

#enhancingpractice2022



working together
to develop practice

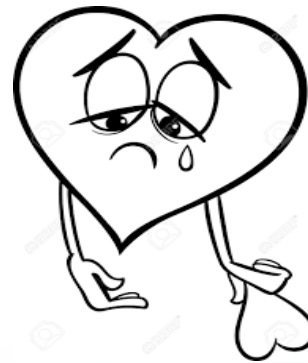


The Sutherland Hospital Falls Prevention and Management Portal

Elham Almasi, Clinical Nurse Consultant-TSH

Nicole Wedell, Nursing Co-Director-TSH

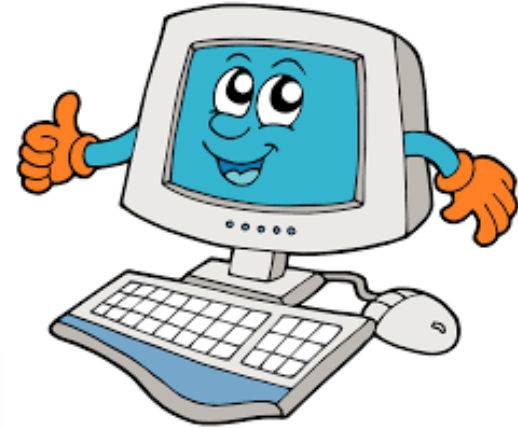
Falls



Issues identified

Risk Areas:

- Hybrid documentation system
- Lack of falls information
- Lack of information on a collective location
- Nil resources that incorporated all admitted and non-admitted patients areas



More issues identified..

- Survey of staff indicated that there was limited access to reliable falls information
- The falls information available was scattered in multiple different locations
- 65% of the staff rated available resources as average and below average

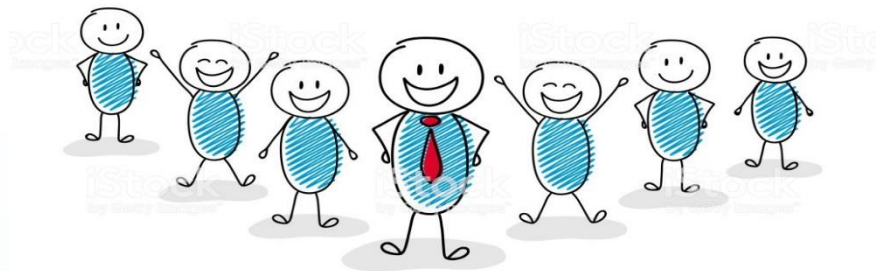


Working Party...



TSH Falls Prevention and Management Portal – GO LIVE

April Falls Day 2019



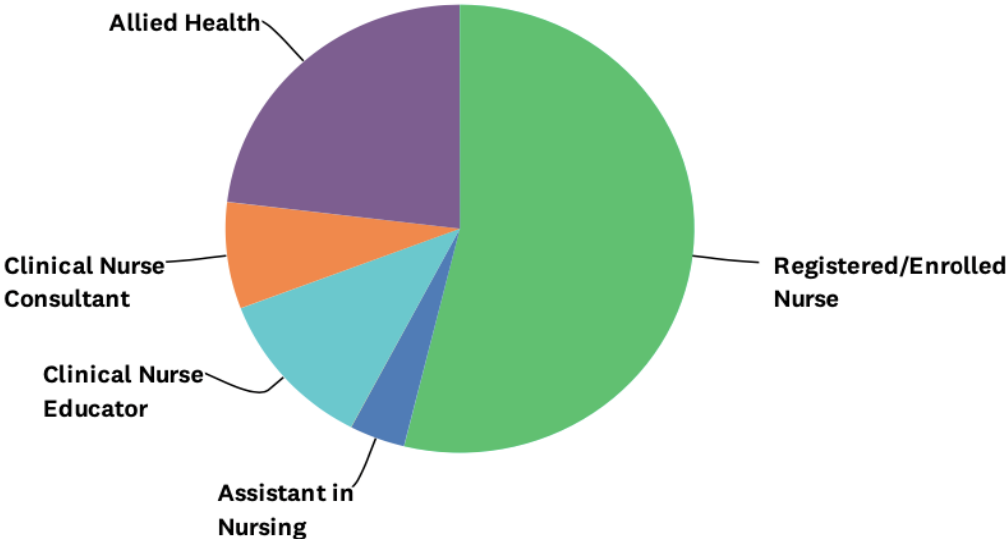
Enhancing Practice
2022 Conference

Staff survey

TSH Falls Portal feedback Survey

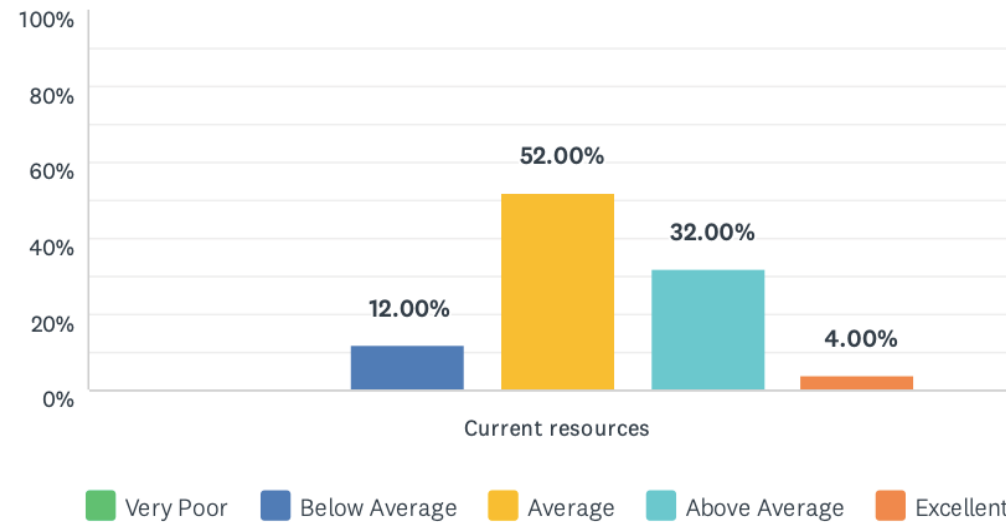
Q1 Select your designation

Answered: 26 Skipped: 0



Q3 Please rate the Falls Prevention resources currently available to you

Answered: 25 Skipped: 1



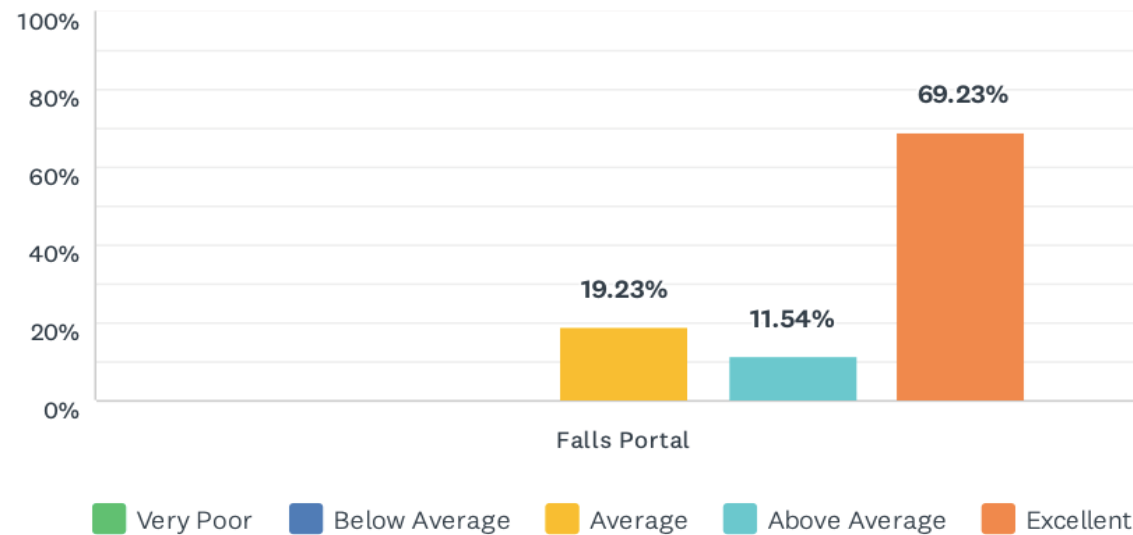
	VERY POOR	BELOW AVERAGE	AVERAGE	ABOVE AVERAGE	EXCELLENT	TOTAL	WEIGHTED AVERAGE
Current resources	0.00% 0	12.00% 3	52.00% 13	32.00% 8	4.00% 1	25	3.28

Comments on existing resources

#	COMMENTS
1	all over the place-not together nicely
2	We have nothing to go off apart from other nurses
3	Ususally just access CEC for patient & family. Limited information for staff.
4	new staff so unsure!
5	Falls portal will be very useful to my ward
6	located in many sites
7	difficult to find, make sense of information
8	have to know where to look in order to find them

Q4 Please rate the TSH Falls Portal as a resource for fall prevention and management

Answered: 26 Skipped: 0



	VERY POOR	BELOW AVERAGE	AVERAGE	ABOVE AVERAGE	EXCELLENT	TOTAL	WEIGHTED AVERAGE
Falls Portal	0.00% 0	0.00% 0	19.23% 5	11.54% 3	69.23% 18	26	4.50

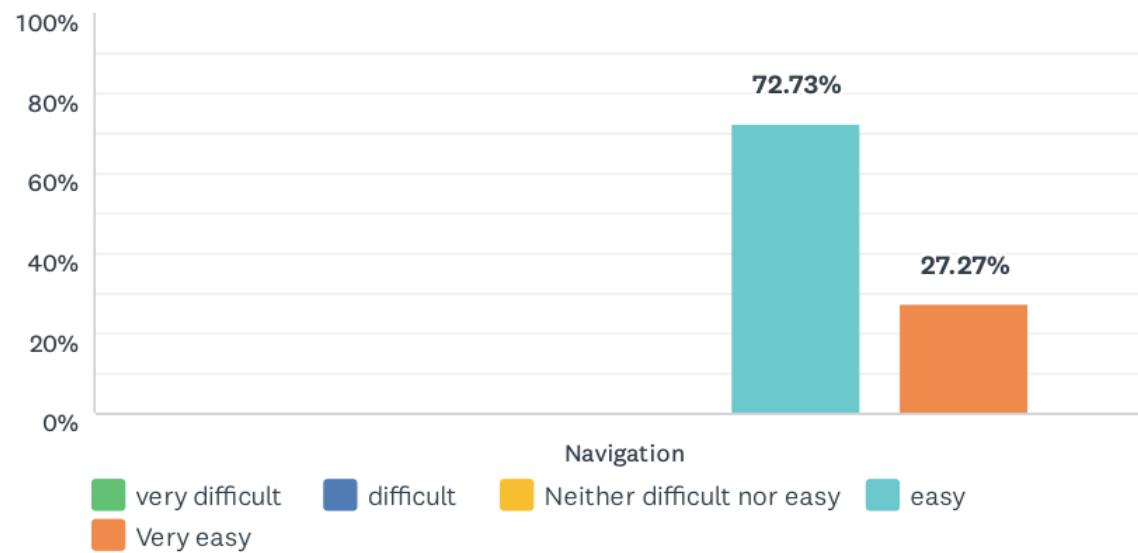
Comments on the Portal as a fall prevention resource

	VERY POOR	BELOW AVERAGE	AVERAGE	ABOVE AVERAGE	EXCELLENT
Falls Portal	0.00% 0	0.00% 0	19.23% 5	11.54% 3	69.23% 18

#	COMMENTS
1	Amazing resource-easy to navigate and a wealth of rich information
2	Easy to access and use
3	Interactive, lots of information in one spot
4	very informative
5	Much easier to source relevant information
6	user friendly - links to up to date information - consistent across the organisation

Q5 How easy is it to navigate through the falls portal?

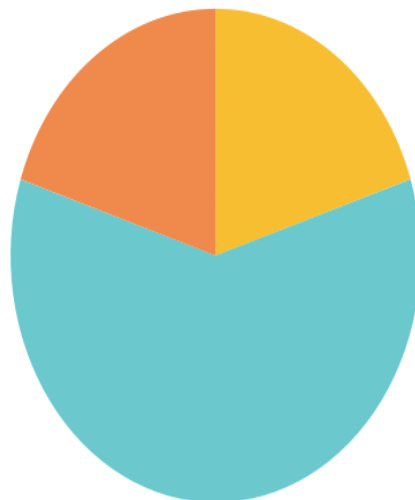
Answered: 11 Skipped: 15



	VERY DIFFICULT	DIFFICULT	NEITHER DIFFICULT NOR EASY	EASY	VERY EASY	TOTAL	WEIGHTED AVERAGE
Navigation	0.00% 0	0.00% 0	0.00% 0	72.73% 8	27.27% 3	11	4.27

Q6 How often do you think you would be using the TSH Falls Portal

Answered: 25 Skipped: 1



never very rarely occasionally frequently Very frequently

Additional comments on the portal

#	RESPONSES
1	WOW! Amazing work by all concerned. Thank you so much for your never ending energy and enthusiasm and cleverness!
2	I really like it. It would be used frequently
3	Suggest to change "Equipment" to "Equipment Log". Suggest to remove levels of standby assist
4	Well done
5	It covers everything
6	Great Job
7	It is user friendly and easy to navigate
8	As above
9	More equipment eg ECG
10	easy access located on desktop may be
11	great resource, plenty of information, easy to navigate

The Sutherland Hospital Falls Prevention and Management Portal



Assessments/Documentation

Environment

Equipment Log

Post Fall Management

Allied Health

Discharge/Community

Falls Policies

Falls Prevention Strategies

High Risk Observation Room

Cognitive Impairment

Medications

Information For Patients

Education/Resources

Safe Mobilisation

Useful Links



NSQHS Standard 5
Comprehensive Care



AUSTRALIAN COMMISSION
ON SAFETY AND QUALITY IN HEALTH CARE

Australian & New Zealand Falls Prevention Society

 **myagedcare**

 **CLINICAL
EXCELLENCE
COMMISSION**



Disclaimer: The Sutherland Hospital Falls Prevention Online Portal is designed for TSH staff use. No part of this work may otherwise be reproduced or copied in any form without the authors' permission

[Comment on this portal here](#)

[Test your Knowledge](#)

[Frequently asked questions](#)

The Sutherland Hospital Falls Prevention and Management Portal



Assessments/Documentation

- Environment
- Equipment Log
- Post Fall Management
- Allied Health
- Discharge/Community
- Falls Policies

Falls Prevention Strategies

- High Risk Observation Room
- Cognitive Impairment
- Medications
- Information For Patients
- Education/Resources
- Safe Mobilisation

Useful Links



Disclaimer: The Sutherland Hospital Falls Prevention Online Portal is designed for TSH staff use. No part of this work may otherwise be reproduced or copied in any form without the authors' permission

Comment on this portal here

Test your Knowledge

Frequently asked questions

The Sutherland Hospital Falls Prevention and Management Portal

Portal Main Menu

Assessment/Documentation

Adult Inpatient, Paediatric, Maternity, Neonates, Non Admitted

Ontario Modify Stratify (OMS)

Falls Risk Assessment and Management Plan (FRAMP)

Cognitive Screen (4AT, AMTS, DRAT, CAM)

Adult - Patient Handover Care Plan

Electronic Patient Journey Board

Post Fall Management

The Sutherland Hospital Falls Prevention and Management Portal

Safe Mobilisation

Safe Mobility videos, Footwear, Mobility Terminology, Traffic light

Assistance, Stand-by Assistance, Supervision, Independent

The terminology used by clinicians, such as occupational therapists and nurses, to describe the required level of assistance is a key to safe mobilisation and participation in daily activities such as showering and dressing.

Please click on the mobility terminology only.

For more information go to [SESLHD Mobility](#)

Welcome to the Falls Documentation Quiz

Click the "Start Quiz" button to proceed

To use this test for CPD Points [click here](#)

The Sutherland Hospital Falls Prevention and Management Portal

Frequently Asked Questions (FAQs)

Falls Frequently Asked Questions

- If my patient was lowered to the ground, would this be a near miss or considered a fall?
- How often do I need to completed a falls Risk Screen (OMS)?
- What should I do if my patient is identified as high falls risk?
- How often do I check an adult patient's observation post fall?
- Should bedrails be used if patient is agitated with an acute delirium or known cognitive impairment?
- What are some of the intervention to address Orthostatic Hypotension (OH) in hospital?
- What is the difference between the 4AT and the Confusion Assessment Method (CAM) assessments?

Thank You



Enhancing Practice
2022 Conference