

Enhancing Practice

2022 Conference

*20:20 Vision – Transforming Our Future
Through Person-Centred Practices*

WEDNESDAY 6 – FRIDAY 8 APRIL 2022
SAGE HOTEL WOLLONGONG, NSW AUSTRALIA

#enhancingpractice2022



working together
to develop practice



LEADING A NETWORK FOR LEADERSHIP: CO CREATING A LEADERSHIP ALUMNI



CONTENT OVERVIEW:

BACKGROUND & CONTEXT

ADVISORY GROUP

CONTENT DELIVERY

STORIES FROM OUR ALUMNI

KEY QUESTIONS FOR OUR
FUTURE



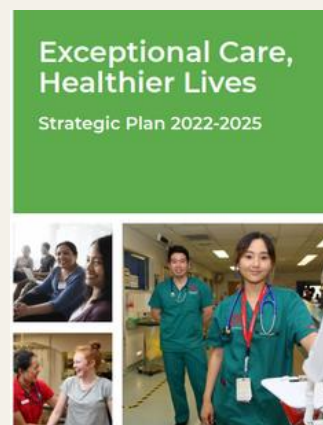
SOUTH EASTERN SYDNEY LOCAL HEALTH DISTRICT



BACKGROUND & CONTEXT

Key Strategic Priority

Building Multidisciplinary Leadership
Capability and Capacity



Establishment of Leadership Programs in 2007

Effective Leadership Program (ELP)
Clinical Leadership Program (CLP)

Strategic Partnerships

University of Wollongong (UoW)
Clinical Excellence Commission (CEC)

KEY FEEDBACK



THE EMERGENCE OF A SHARED VISION

How can we stay connected and
support each other?

How can we continue our
leadership development?

What could it look like?

Who can help us bring
it all together?



THE EMERGENCE OF A SHARED VISION

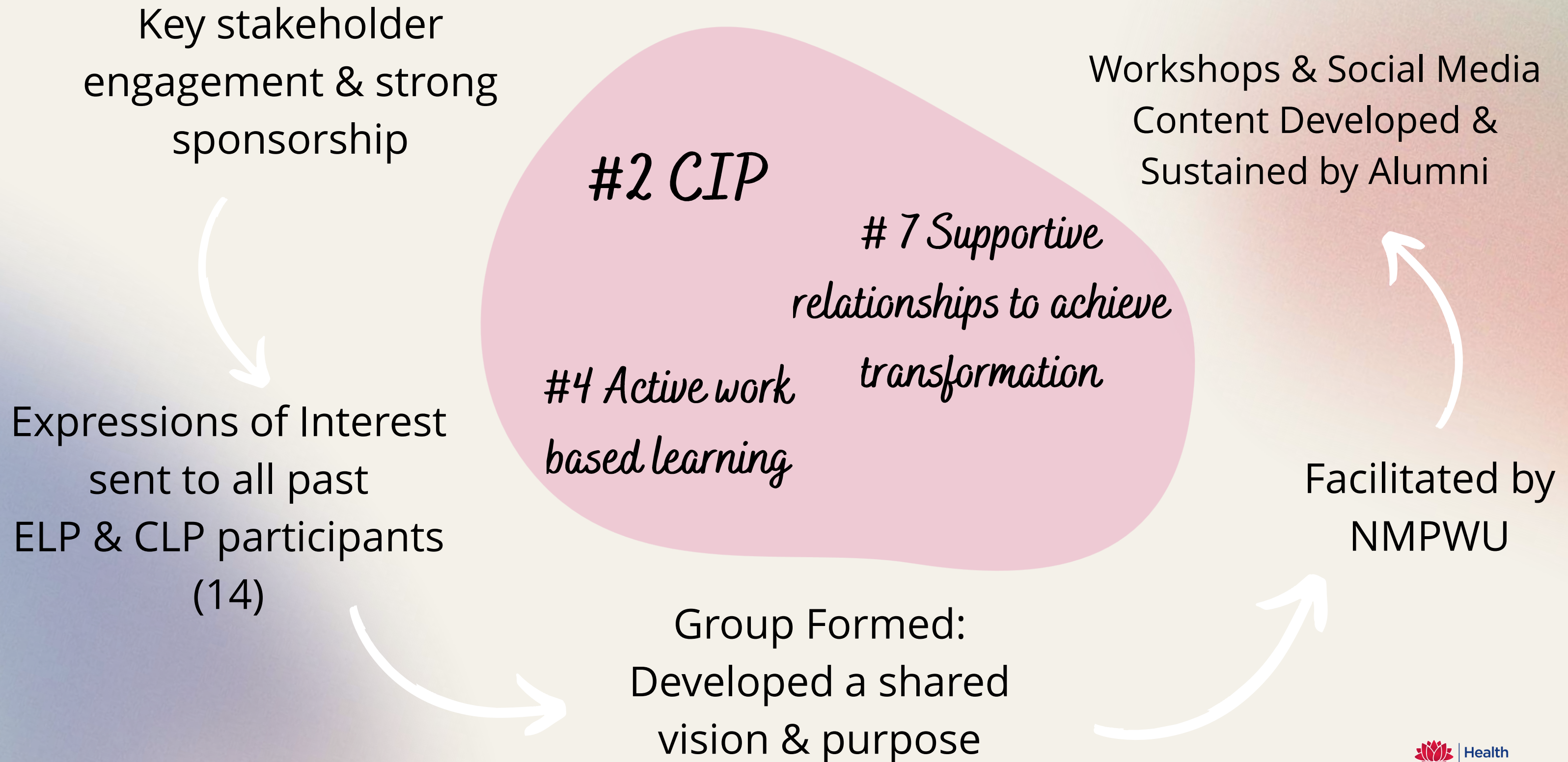
Alumnus (Alumni): A person (or people) who has attended or has graduated from a particular school, college or university.

Merriam- Webster Dictionary, 2022



SESLHD Leadership Alumni: a group of like minded individuals who share a common experiences of completing the Effective & Clinical Leadership Programs (or LIFT) who share a common vision for connection & continuous leadership development opportunities.

THE ALUMNI ADVISORY GROUP WAS FORMED



TOPICS OF EXPLORATION



SES LHD LEADERSHIP ALUMNI MASTERCLASS SERIES

Working with People with High Conflict Personalities

with special guest Anita Alexander, Senior Advisor Positive Workplace & Psychological Wellbeing

- Learn about the HCP Management Model
- Develop strategies to manage HC people
- Learn to use tools to assist in all areas of your life

Event Details:

6th November 2019
George's River 16ft Sailing Club, Dolls Point

Registration: 8.30am
Masterclass: 9am - 1.00pm

Register by 11th Nov 2019
MHL Code: DEV13143

For more information, send inquiries to:
SES LHD Leadership@health.nsw.gov.au
facebook.com/groups/SES LHD Leadership Alumni

ELP & CLP Alumni Master Class

Leadership Stories from:

Karen Tuqiri
ELP Alumni &
Director of Nursing
Wollongong Hospital

&

Leisa Rathborne
General Manager
St. George Hospital

2-Hour Workshop:
Developing Peer Support &
Critical Companionship Relationships

Light refreshments for morning tea provided

"Leaders become great not because of their power but because of their ability to empower others"

John Maxwell

November 27
9am - 12pm
George's River Sailing Club, Bayview Room

Please RSVP via Calendar
Invite by November 13th 2018



SES LHD Leadership Alumni Masterclass

"Thriving to Lead"

SAVE THE DATE
11 November 2021

- Hear from Dr. Luke Egan and Dr. Justine Gatt of Neuroscience Research Australia about the science behind wellbeing and thriving at work (Thrive Program)
- Hear evidence and theory to support the importance mindfulness practices
- Learn how to use tools to support your wellbeing now and into the future

Event Details:

11th Nov 2021
Zoom
Details forwarded the week of the workshop

2.00pm - 3.30pm

Register by 8 Nov, 2021
MHL Code: DEV13143

For more information, send inquiries to:
Keith Jones - Nurse Manager - Leadership Initiatives
SES LHD Nursing & Midwifery Practice & Workforce Unit
Keith.Jones@health.nsw.gov.au
Sally Peters - Nurse Manager - Leadership Development
SES LHD Nursing & Midwifery Practice & Workforce Unit
Sally.Peters@health.nsw.gov.au

CAPACITY COLLABORATION CULTURE



SES LHD LEADERSHIP ALUMNI MASTERCLASS SERIES

Supervision for Leadership Development

Shared experiences of the leadership supervision, including: Mentorship, Coaching & Peer Supervision

Opportunities to network and explore how supervision can help maximise your leadership potential

Event Details:

16th May 2019
George's River 16ft Sailing Club, Dolls Point

Registration: 8.30am
Masterclass: 9am - 12pm

Optional: Informal Networking Lunch in the Bistro from 12.30 pm

Please register on My Health Learning using code:
For more information, send inquiries to:
SES LHD Leadership@health.nsw.gov.au
facebook.com/groups/SES LHD Leadership Alumni



SES LHD Leadership Alumni Masterclass

"Mentoring & Networking"

SAVE THE DATE
May 19th

Event Details:

- Hear from a panel of mentors and mentees on their mentoring experiences
- Explore your potential as a mentor and opportunities as a mentee
- Opportunity for peer learning and networking

19th May 2021
George's River 16ft Sailing Club, Dolls Point

Registration: 8.30am
Workshop: 9am - 1.00pm

Register by May 14th
MHL Code: DEV13143

For more information, send inquiries to:
Keith Jones - Nurse Manager - Leadership Initiatives
SES LHD Nursing & Midwifery Practice & Workforce Unit
Keith.Jones@health.nsw.gov.au
Dan Shaw - Nurse Manager - Leadership Development
SES LHD Nursing & Midwifery Practice & Workforce Unit
Daniel.Shaw@health.nsw.gov.au

CAPACITY COLLABORATION CULTURE



SES LHD Leadership Alumni Masterclass

"Leading through times of Change"

With Panelists:-
Louise Barclay
Simone Payn
Liz Ryan

NUM Covid-19 Clinic POWH
Manager, Maternity Services TSH
District Disaster Management CNC

- Hear inspirational leadership stories
- Develop strategies to motivate self and others through times of change
- Opportunity for peer learning and networking

Event Details:

Note the workshop will be repeated - due to Covid-19 the number of people allowed in the room is restricted.

Register for one workshop date only

12th or 18th November 2020
George's River 16ft Sailing Club, Dolls Point

Registration: 8.30am
Workshop: 9am - 1.00pm

Register by 11th Nov 2020
MHL Code: DEV13143

For more information, send inquiries to:
Keith Jones - Nurse Manager - Leadership Initiatives
SES LHD Nursing & Midwifery Practice & Workforce Unit
Keith.Jones@health.nsw.gov.au

CAPACITY COLLABORATION CULTURE

"Each leadership journey is different and we all take away different aspects of our learning and apply to our jobs. Listening and caring about our workforce was along a strong message today."

STORIES FROM OUR ALUMNI

Although I'm not always comfortable talk to people I don't know, I really valued the 'speed dating' portion of the workshop. It was great to connect with other staff within the district and hear about their triumphs and frustrations. This is essential for any leadership journey. Although it was challenging, I loved how it was facilitated."

"I really value the ongoing support and reassurance- there is always something new to learn from locally run leadership forums."

Over
200
participants across 6 workshops
100 % participants would
attend future alumni
offerings

SOCIAL MEDIA ENGAGEMENT



SOME RELECTIONS

IT IS ESSENTIAL TO HAVE A COMMITMENT FROM OUR ADVISORY GROUP.

AN APPRECIATION OF THE CROSS DISCIPLINARY APPROACH AND COLLABORATION

USE OF STRENGTHS AND HIGH CHALLENGE/HIGH SUPPORT TO ENABLE GROWTH AND DEVELOPMENT AS AN ADVISORY MEMBER

KEY QUESTIONS FOR EXPLORATION

WHAT OTHER WAYS CAN WE CONNECT ACROSS OUR ORGANISATION AND BEYOND TO CONTINUE TO BUILD LEADERSHIP CAPACITY?

HOW CAN WE KEEP TRACK OF THE PROFESSIONAL AND LEADERSHIP JOURNEYS OF OUR ALUMNI?

HOW DOES THIS STRUCTURE IMPACT THE DELIVERY OF PERSON CENTRED COMPASSIONATE CARE?



www.enhancingpractice.com.au
#enhancingpractice2022



iPDc

working together
to develop practice

