



Stream 2

How can real sustainability motivate fund managers for better long-term performance?

13:00 - 13:50

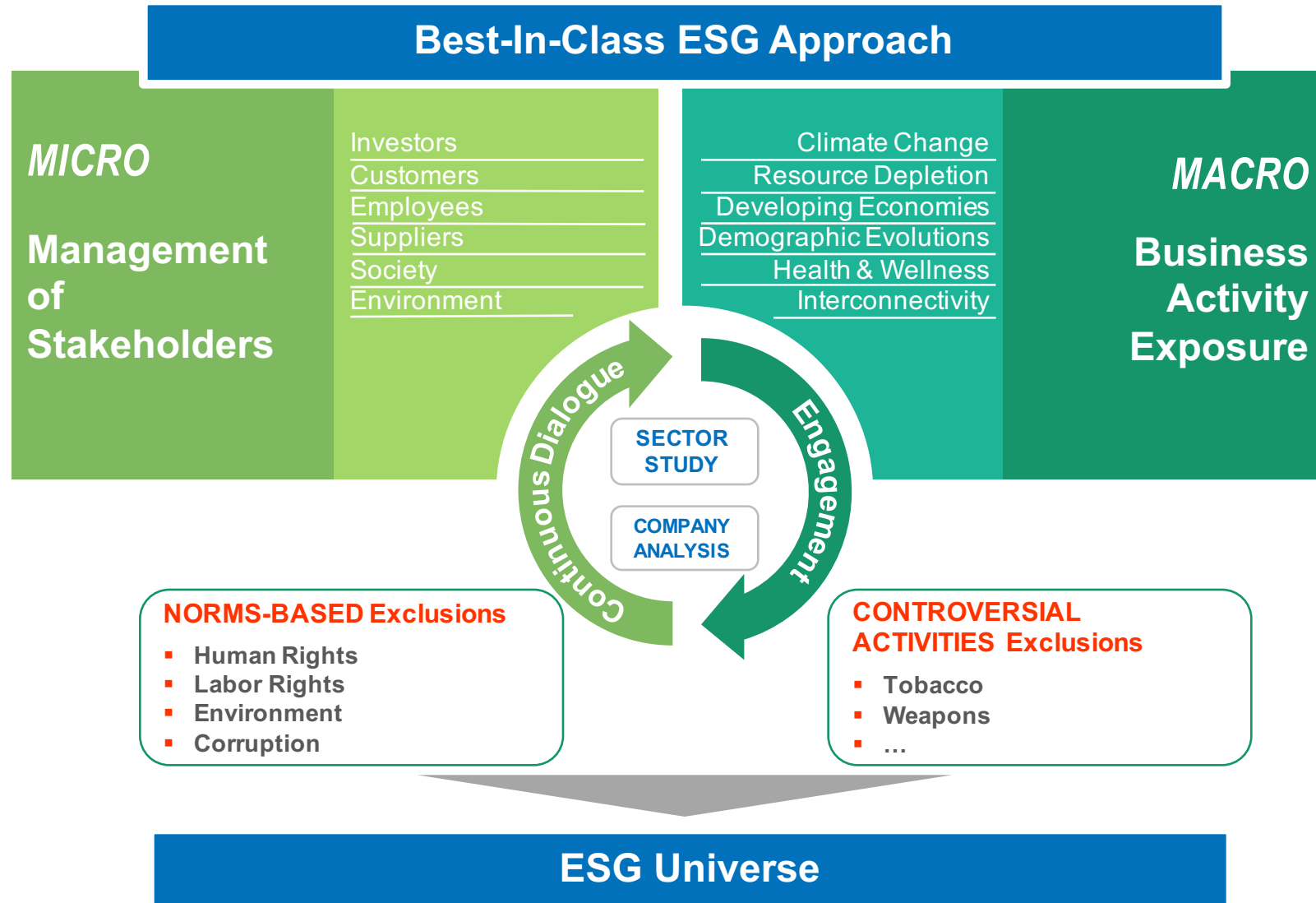
Mirtha Kastrapeli, *Global Head of Research*, **State Street Center for Applied Research**

Wim Van Hyfte, *Global Head of Responsible Investments and Research*, **Candriam Investors Group**

Satyajit Bose, *Associate Director & Lecturer*, **Columbia University**

Moderator: **Rob Lake**, *Principal*, **Rob Lake Advisors**

CANDRIAM's Sustainable & Responsible Investment Analysis



METALS & MINING Sector Study

CLIMATE CHANGE

- ▶ **Coal and steel** are the biggest emitters
- ▶ **Lithium, nickel and cobalt** offering great opportunities

HEALTH & WELLNESS

The sector significantly impacts peoples' health

- ▶ Gold: miners' lung diseases
- ▶ Lead: causing anemia, cancer, ...

DEVELOPING ECONOMIES

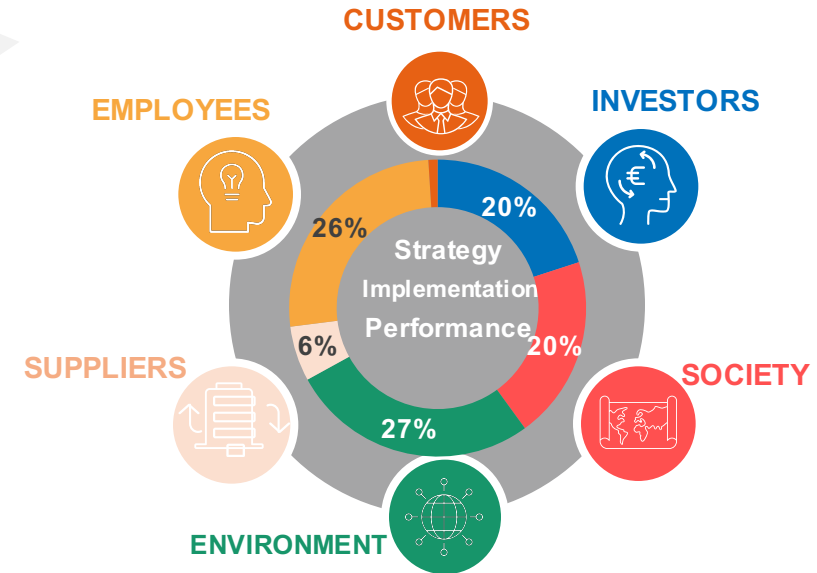
- ▶ Resource-rich countries characterized by very high level of **corruption**
- ▶ High risk of **human and labor rights violation**

RESOURCE DEPLETION

- **Water resources:**
 - ▶ Extraction and treatment
 - ▶ Water pollution
- **Biodiversity**
 - ▶ Deforestation

Business Activities Exposure

Stakeholder's Model



A Few Examples of Key Challenges

SOCIETY	Socio economic relations
	Site safety
	Public authority relations
ENVIRONMENT	Water consumption
	Raw materials & waste
	Land use & biodiversity
EMPLOYEES	Health & Safety
	Dialogue with employees





Stream 2

How can real sustainability motivate fund managers for better long-term performance?

13:00 - 13:50

Mirtha Kastrapeli, *Global Head of Research*, **State Street Center for Applied Research**

Wim Van Hyfte, *Global Head of Responsible Investments and Research*, **Candriam Investors Group**

Satyajit Bose, *Associate Director & Lecturer*, **Columbia University**

Moderator: **Rob Lake**, *Principal*, **Rob Lake Advisors**



Stream 2

What does the low carbon transition mean in terms of future-proofing investments?

13:55 - 14:45

Anita Green, *Manager, Sustainable Investment Strategies*, **Wespath**

David Richardson, *Executive Director, Global Head of Marketing and Client Service*, **Impax Asset Management**

Moderator: **Tricia Jamison**, *Analyst*, **2° Investing Initiative**

Afternoon networking break

14:45 - 15:15

Sponsored by:





Stream 2

How the economics and pricing of energy is now a priority for investors: the energy split now and in the short to medium term.

15:15 - 16:05

Alison Schneider, *Director, Responsible Investment, Alberta Investment Management Corporation (AIMCo)*

Will Nichols, *Senior Analyst, Environment and Climate Change, Verisk Maplecroft*

John Theiroff, *Vice President, Senior Analyst, Moody's Investors Service*

Moderator: **Henrik Jeppesen**, *Head of Investor Outreach, North America, Carbon Tracker Initiative*



Stream 2

How the economics and pricing of energy is now a priority for investors: the energy split now and in the short to medium term.

15:15 - 16:05

Alison Schneider, *Director, Responsible Investment, Alberta Investment Management Corporation (AIMCo)*

Will Nichols, *Senior Analyst, Environment and Climate Change, Verisk Maplecroft*

John Theiroff, *Vice President, Senior Analyst, Moody's Investors Service*

Moderator: **Henrik Jeppesen**, *Head of Investor Outreach, North America, Carbon Tracker Initiative*

LEAD SPONSOR



CO-SPONSORS



ASSOCIATE SPONSORS



SUPPORTERS



THE END OF DAY ONE



Stream 2

What is behind the strong rise in HNW client demand for impact investment and outcome reporting?

09:40 - 10:30

Aubre Clemens, *Vice President*, J.P. Morgan Private Bank

Stephen Freedman, *Head of Sustainable Investing Solutions*, UBS Wealth Management Americas

Moderator: **William Burckart**, *President*, The Investment Integration Project (TIIP)



responsible-
investor.com
ESG and sustainable finance

RI Americas 2017

December 6-7, New York

Morning networking break

10:30 - 11:10



Stream 2

SDGs and measuring impact of your portfolios – limitations of current approaches, and likely advances?

11:10 - 12:00

Aniket Shah, *Senior Adviser, Sustainable Development Solutions Network*

Emilie Beral, *Research Director, Vigeo Eiris Rating*

Mikael Schvarzman, *Market Development Manager, Thomson Reuters*

Moderator: **Steven Godeke**, *Adjunct Professor of Finance, New York University, and Founder, Godeke Consulting*



Stream 2

Why and how are investment consultants and asset owners assessing ESG integration in asset allocation, manager selection and review?

13:00 - 13:50

Roger Urwin, *Global Head of Investment Content*, **Willis Towers Watson**

Karen Lockridge, *Principal*, **Mercer**

Kate Starr, *Chief Investment Officer*, **Flat World Partners**

Moderator: **Nalini Feuilleley**, *Head of Canada*, **Principles for Responsible Investment (PRI)**

LEAD SPONSOR



CO-SPONSORS



ASSOCIATE SPONSORS



SUPPORTERS

