



Enterprise Solid State Storage: *Enabling Scalable and Sustainable Datacenters*

Thomas Isakovich
CEO & Founder
April 4, 2011



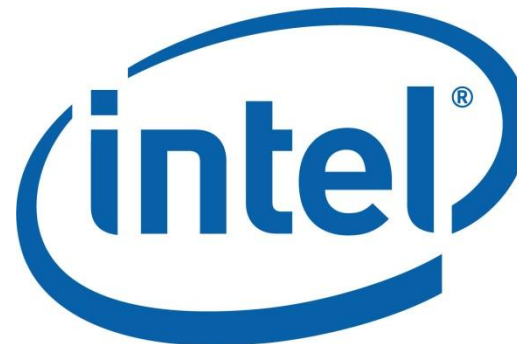
Who is Nimbus?

Nimbus is the leading provider of solid state storage systems, or **Sustainable Storage™**, designed as intelligent and resilient primary storage for enterprises & datacenters.

Who Uses Nimbus?



communications



NIMBUS DATA

What are Analysts Saying?

“Nimbus’ approach runs counter to the accepted notion in storage over decades by addressing underlying causes rather than merely ameliorating symptoms.”

- Mark Peters



What are Analysts Saying?

“Comprehensive designs, such as Nimbus’ S-class Enterprise Flash Systems, that deliver increased performance and high availability at far lower OpEx, are a welcome solution to today’s challenges.”

- Jeff Janukowicz



What are Analysts Saying?

“Nimbus S-Class Sustainable Storage is shattering the price-performance curve. Few systems can match the S-class in NAND capacity, functionality, and sustained performance.”

- Marc Staimer



What are Analysts Saying?

“Nimbus offers a pure solid state and highly reliable platform with complete storage services, a critical part of the transition to SSD as the dominant storage within the next 5 years.”

- George Crump



Market Forecast

Enterprise solid state shipments will double to 762,400 units and \$800 million in 2011, **growing to \$2.5 billion by 2014.**



What's Wrong with Storage?

- ▶ **Performance and efficiency are stagnant . . .**
 - › . . . While storage demands increase exponentially
 - › . . . And workloads become more IO intensive



Windows Server® 2008
Hyper-V™



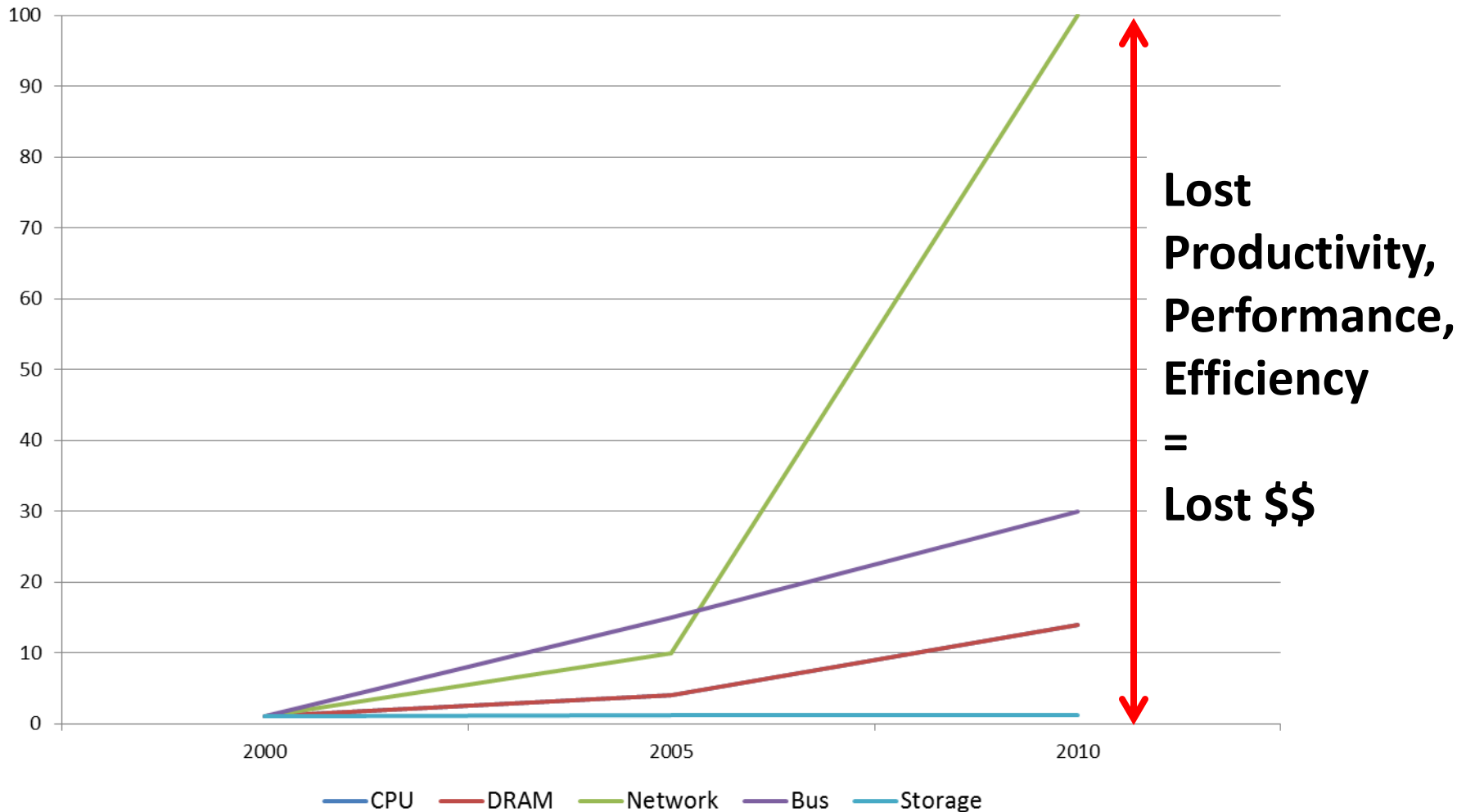
Microsoft®
SQL Server® 2008



A Decade at the Back of the Line

	2000	2005	2010
CPU speed	1 x Pentium 4 1.5 GHz	4 x Pentium D 2.6 GHz	14 x Nehalem Quad 2.6 GHz
DRAM speed	1 x 2.1 GB/s DDR1 PC-2100	4 x 8.4 GB/s DDR2 PC2-4200	14 x 25.6 GB/s DDR3 PC3-8500
Network speed	1x 100Mb Ethernet	10 x Gigabit Ethernet	100 x 10 Gigabit Ethernet
Bus speed	1 x 133 MB/sec PCI 32/33 MHz	15 x 2000 MB/sec PCIe Gen1 x8	30 x 4000 MB/sec PCIe Gen2 x8
Storage speed	1x 3.8 ms seek Cheetah 15K.2	1.2 x 3.6 ms seek Cheetah 15K.4	1.2 x 3.6 ms seek Cheetah 15K.7

Before Solid State...



Unacceptable Alternatives

► **Option #1: More spindles**

- › Does not address latency, increases failure risk, and multiplies power, cooling, and datacenter rackspace costs

► **Option #2: Short-stroke hard drives**

- › Wastes 70% of storage capacity for limited speed gains

► **Option #3: Caching**

- › Caches are 1000:1 oversubscribed, leading to inconsistent results

► **Option #4: Tiering**

- › Unproven, adds management complexity, more hardware, and does not improve tier 1 performance

NAND Flash as 15K Disk Replacement

► Huge Performance and Reliability Gains

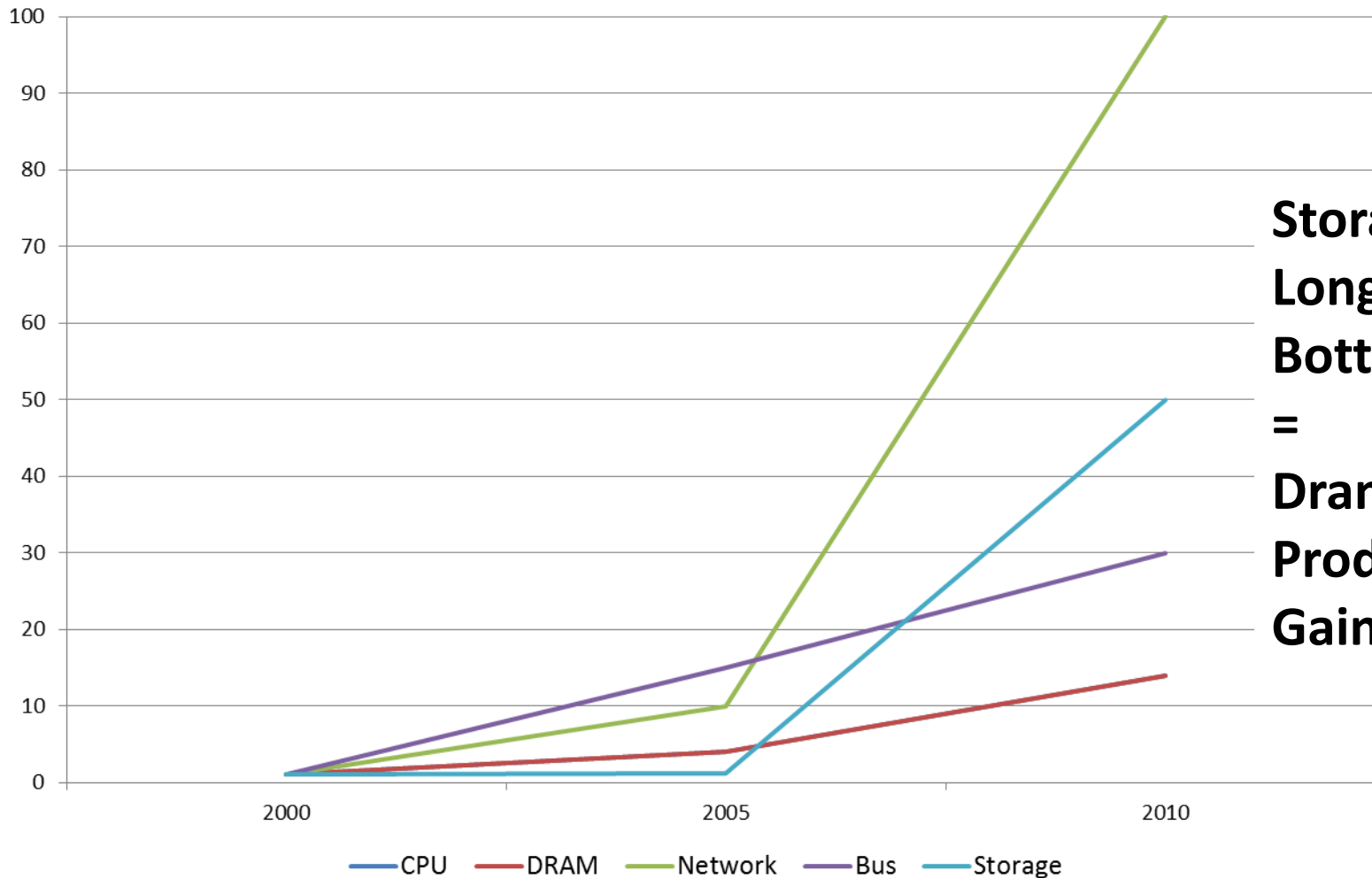
	15K HDD	NAND Flash	Improvement
Performance (I/Ops)	350	30,000	86x greater
Latency (ms)	10 ms	0.3 ms	30x faster
Reliability (MTBF)	1.2 M	2.0 M	67% greater
Rebuild Times	10-20 hrs	20-30 min	40x faster

NAND Flash as 15K Disk Replacement

► Significant Efficiency and Economic Gains

	15K HDD	NAND Flash	Improvement
Power (W / TB)	30	5	83% lower
Efficiency (IO / W)	15	6,500	433x higher
Density (TB / U)	3	5	67% higher

After Solid State...



**Storage No
Longer the
Bottleneck
=
Dramatic
Productivity
Gains**

Challenges with Solid State

▶ **Issue #1: Cost**

- › Flash memory is typically 10 to 50x the cost/GB of 15K disk

▶ **Issue #2: Reliability**

- › Flash has a fixed lifespan that must be managed intelligently

▶ **Issue #3: Software**

- › Using flash as primary storage requires new file systems, software

▶ **Issue #4: Scale**

- › External networkable flash storage must expand non-disruptively

The Nimbus Solution

► Sustainable Storage™

- › 100% NAND flash memory storage
- › > 10x higher storage performance
- › > 90% lower operating expenses
- › Superior reliability and availability



► Nimbus S-class Platform

- › Designed exclusively for flash memory
- › Total acquisition cost comparable to 15K disk arrays
- › Complete data protection and management software
- › Multi-protocol, unified SAN and NAS up to 250 TB
- › Up to 5 year enterprise-class warranty and service

About Nimbus

► Milestones

- › Profitable since 2009; privately-financed
- › Over 200 Nimbus installations worldwide

► Awards / Recognition

- › **Winner:** Product of the Year – *Storage Magazine, 2010*
- › **Winner:** Best Midrange Storage – *Tech Awards Circle, 2010*



System Architecture

► Hardware Details

- › 2.5, 5.0, and 10.0 TB sizes, scalable to 250 TB
- › 2U rackmount chassis, redundant components
- › No single point of failure cluster configuration
- › Up to 4 active-active network IO modules

► Enterprise Flash Blades

- › 6x more durable than MLC
- › 28% NAND overprovisioning
- › Wear-leveling to distribute load
- › IO shaping to prevent burn-out
- › Real-time garbage collection



FlexConnect Technology

► Up to 4 network IO modules

- › 10 Gigabit Ethernet (up to 16 ports)
- › 8 Gb Fibre Channel (up to 8 ports)
- › 40 Gb Infiniband (up to 8 ports)

► Multi-protocol

- › SAN
- › NAS



► Active-active Design

- › All ports active in parallel for load-balancing and failover
- › Supports all protocols simultaneously for true unified storage

HALO Operating System

▶ **Nimbus File System**

- › 64-bit scalability (up to 4,096 PB)
- › No silos: block and file data unified
- › Expand storage and volumes on-the-fly
- › No pre-allocation: < 3% file system overhead

▶ **Storage Protocols**

- › iSCSI
- › FC
- › NFS
- › CIFS

HALO Data Protection

▶ **Snapshots**

- › High-performance, writable snapshots
- › Space-efficient and instantaneous

▶ **Replication**

- › Continuous, “always-on” for superior data protection
- › Asynchronous IO for zero local performance impact
- › Bandwidth throttling and automatic recovery on link failures

▶ **Mirroring / HA**

- › Synchronous IO for local/campus mirroring
- › Automatic failover to secondary Nimbus system

HALO Data Management

► Deduplication

- › Block-based and inline
- › Perfect for VM and VDI deployments
- › Superior tiger2 hash algorithm eliminates collisions
- › Up to 10:1 data reduction in real-time

► Thin-provisioning

- › Create up to 250 TB “virtual” LUNs
- › Consumes storage capacity only as needed
- › Eliminates client-side file system management

► Data Elimination

- › Instant secure erase capability

HALO Administration

▶ **Application Integration**

- › Microsoft Exchange, SQL Server, and SharePoint-aware
- › VMware ESX/vSphere support
- › Citrix XenServer support
- › Oracle RAC, ASM support

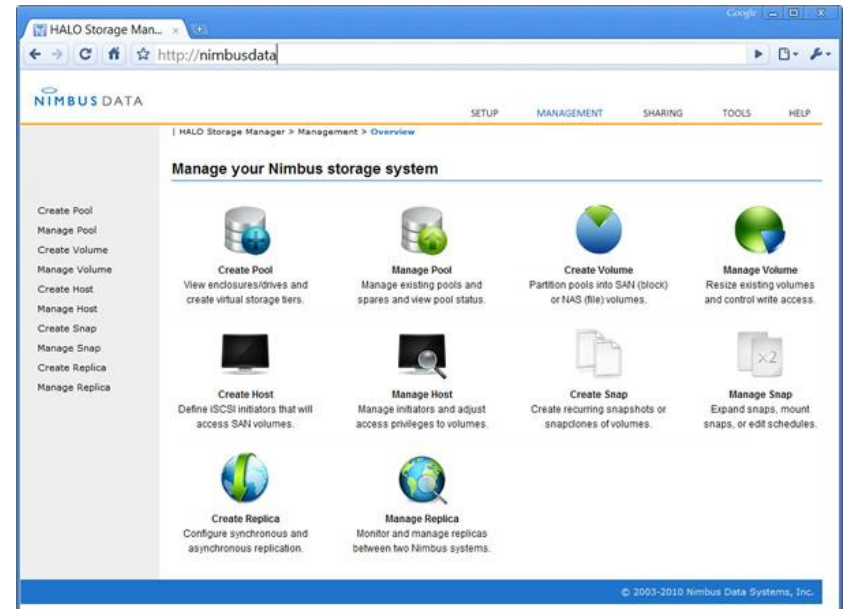
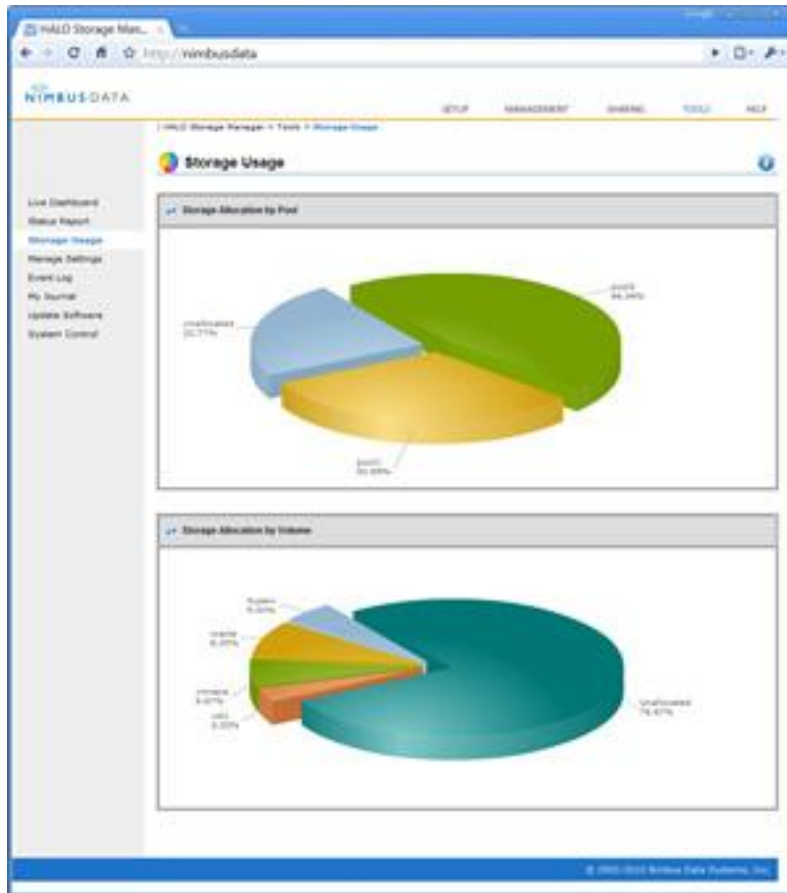
▶ **Full CLI**

- › Management via command line interface
- › Fully documented and scriptable

▶ **Web/Mobile Management**

- › Intuitive web management interface
- › Apple iPhone and iPad native management interface

HALO Screenshots



Ideal Applications

► **Virtualization/VDI**

- › Servers: Microsoft Hyper-V, Citrix Xen, VMware vSphere
- › Desktops: VMware View, XenDesktop, Hyper-V

► **Databases/OLTP**

- › Microsoft SQL Server, Exchange, SharePoint
- › Oracle RAC, SAP, IBM DB2

► **HPC**

- › Energy, scientific computing, biotech, healthcare, imaging

► **Cloud Computing**

- › Public and private “cloud” providers, Web 2.0, content delivery

Support and Services

► **Worldwide Onsite Support**

- › USA, Canada, and European coverage
- › 9AM to 5PM, next business day onsite service
- › 24 x 7 x 365 same day onsite service
- › Call center @ Nimbus HQ for optimal technical expertise
- › Support contracts up to 5 years
- › Spares kits available for customer self-service
- › Security plan available for organizations with sensitive data

► **Installation and Training**

- › 95% of customer self-install Nimbus systems
- › Online certification training available

Why Nimbus?

► Software

- › Complete multiprotocol SAN/NAS platform
- › Flash-focused file system optimizes reliability, performance
- › Advanced high availability, deduplication, and management features

► Hardware

- › Ground-up design maximizes flash performance, density
- › Modular, scale-on-demand to hundreds of TB's, PB's
- › Versatile 10 GbE, Infiniband, FC, and FCoE connectivity

► Model

- › Cost advantage through vertical integration, no disk legacy
- › Profitable company, 100's of customers, fiscally responsible growth

NIMBUS DATA



Nimbus Data Systems – USA

One Market Street, 36th floor
San Francisco, CA 94105

www.nimbusdata.com

(877) 6 - NIMBUS



Nimbus Data Systems – EMEA

9/11, allée de l'Arche
Courbevoie Cedex
La Défense Tour Egée
92671 Paris La Défense
France