

TRICKY CASES

”the price of the cure of cancer”

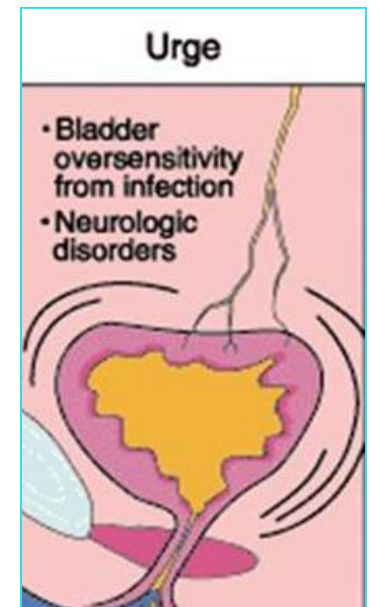
FEMALE 70 YEARS

- Pain in the right side and back and microscopic hematuria
- CT showed renal urothelial carcinoma
- Laparoscopic and hand-assisted nephro-ureterectomy
- Pathology: PT3 N0 M0



POSTOPERATIVELY

- Postoperatively Mitomycin in the bladder
- Catheter removal after 10 days
- After removal of the catheter she complained of severe dysuria, urgency and incontinence
- Her UTI was treated with antibiotics
- Her urgency was treated with anticholinergics



BUT IT DID´NT WORK!

Intake 2700 mL
Urine 1725 mL
Incontinence 319 ML

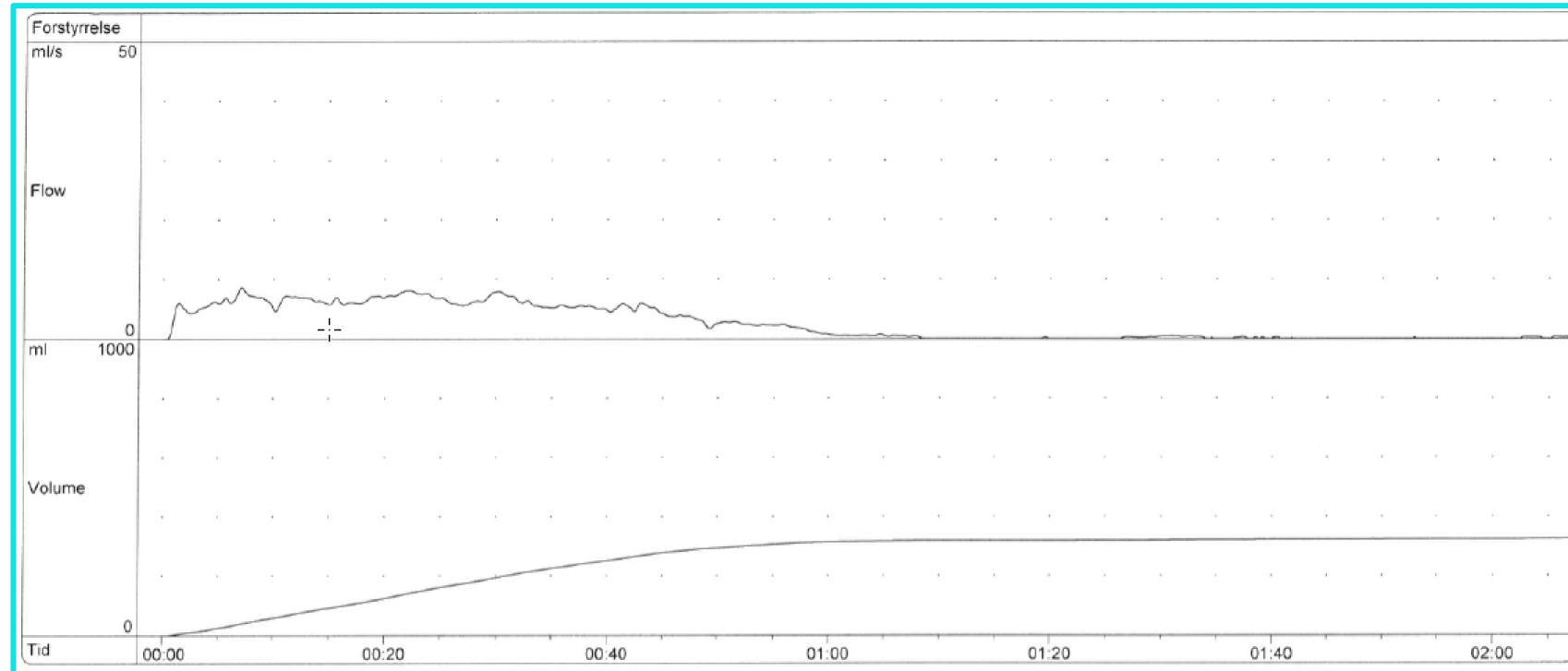
Before the operation:
no problems!

Dato: 1.6.17		Arbejdsdag <input type="checkbox"/>	Fridag <input type="checkbox"/>				
Stod op kl.: 830		UDFYLDES KUN VED UTÆTHED					
Gik i seng kl.: 2245		Utæthedens størrelse		Var utætheden forudgået af vandladningstrang		Noter, hvad du foretog dig i forbindelse med utætheden:	
Klokkeslæt	Vandladning ml	Drukket ml	Lidt	Meget	Ja	Nej	
Kl. 6-7							
Kl. 7-8	250						
Kl. 8-9	100	900					
Kl. 9-10	10+10	300					
Kl. 10-11	50		70				INCONTINENCE
Kl. 11-12	40+20	300	39				INCONTINENCE
Kl. 12-13	10+20	300	150				STORVANDLADNING
Kl. 13-14	50+20+20	300					
Kl. 14-15	30+10		20				INCONTINENCE
Kl. 15-16			35				INCONTINENCE
Kl. 16-17		300					
Kl. 17-18	20	300					
Kl. 18-19	40+20		40				INCONTINENCE
Kl. 19-20	10+150						
Kl. 20-21							
Kl. 21-22							
Kl. 22-23							
Kl. 23-00	100						
Kl. 00-1	325						
Kl. 1-2							
Kl. 2-3	180						
Kl. 3-4							
Kl. 4-5							
Kl. 5-6	200+10						
I alt:	1725	2700	319				

Øvrige bemærkninger (f.eks. fysisk aktivitet): NÅR JEG HAR SIDDET LIGGET
SKAL DET ER' ALLE'S STØRST PÅ
TOILET

Nedenstående udfyldes af hospitalet

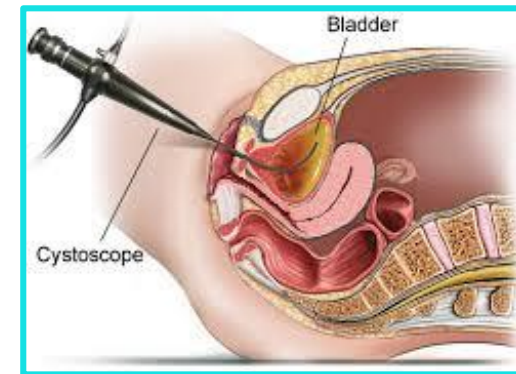
ATYPICAL SPONTANEOUS UROFLOW



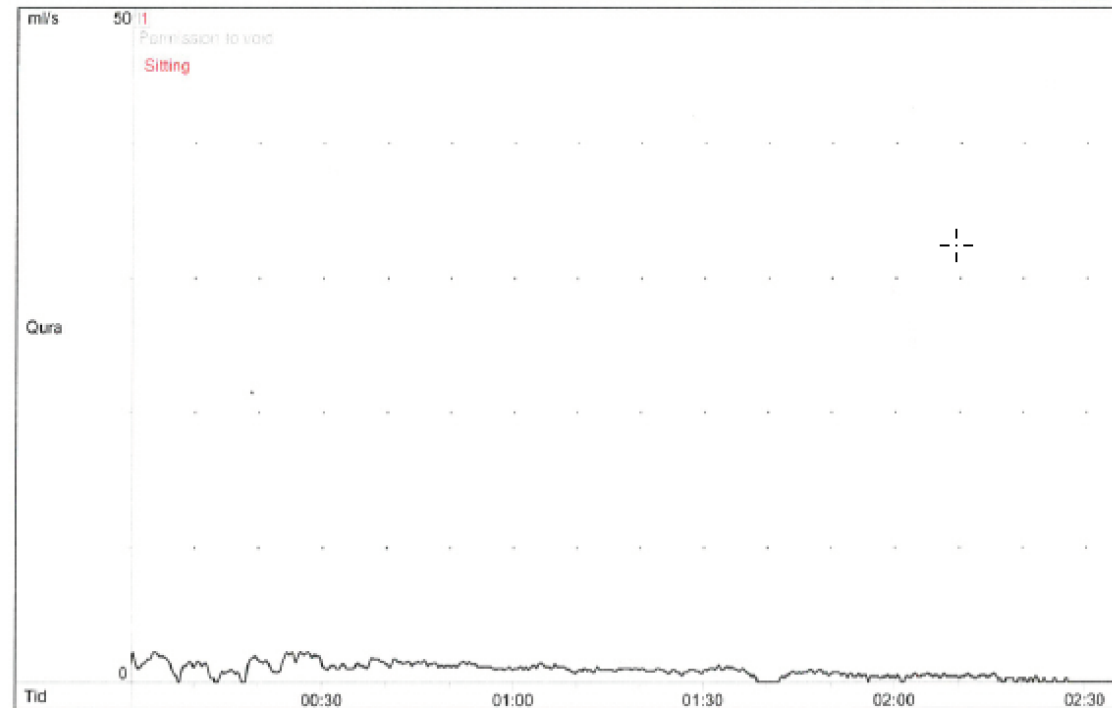
Vol: 326 ml
PVR: 0 ml

BASIC

- **Gynecological examination:** Virgin and can not participate
 - Urethra is stable when she coughs
- **Flexible cystoscopy:** “severe incontinent. Diverticulum on right side of the bladder, but the bladder can be filled.....”



FLOW WAS REPEATED

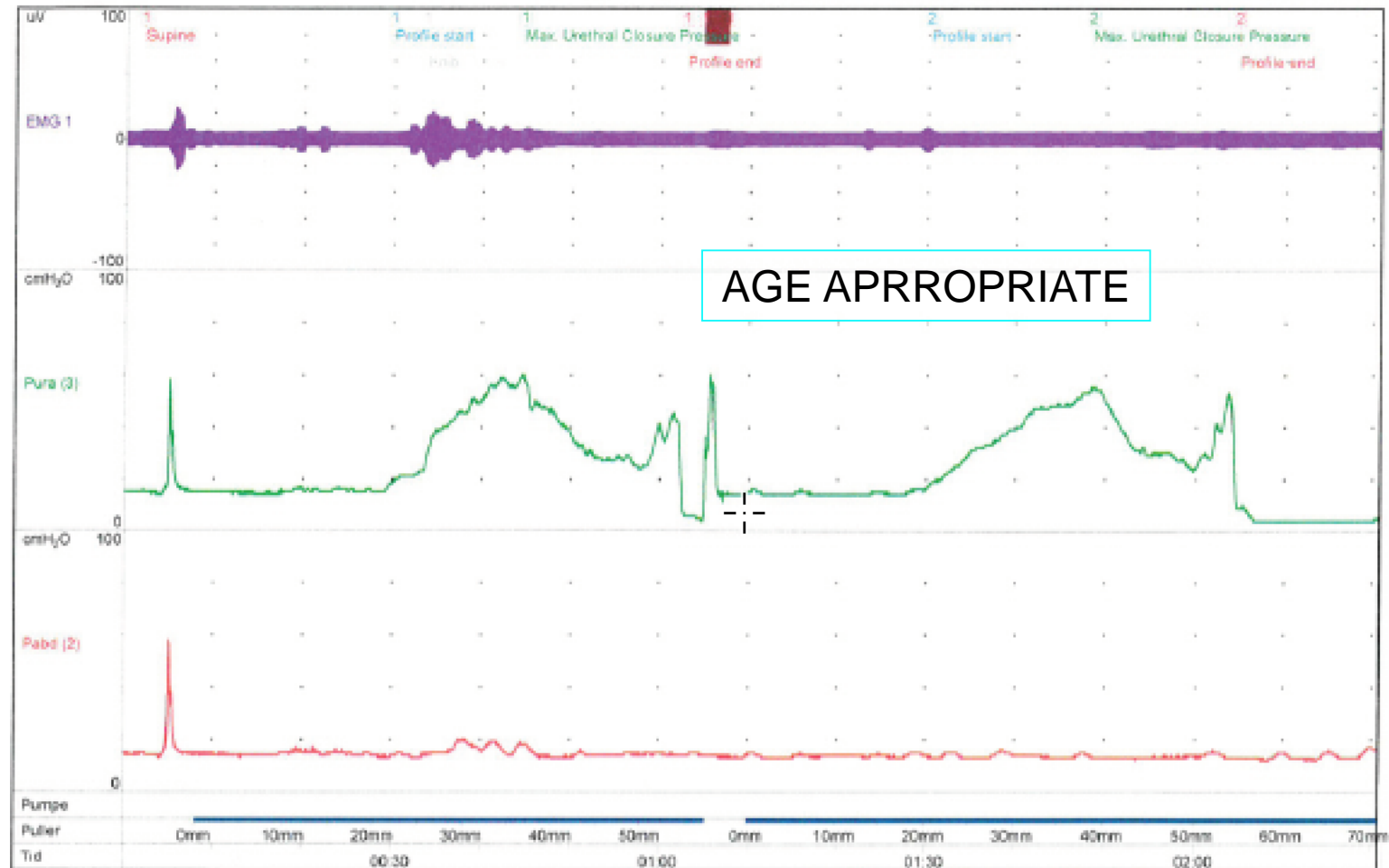


“It just trickles out....”

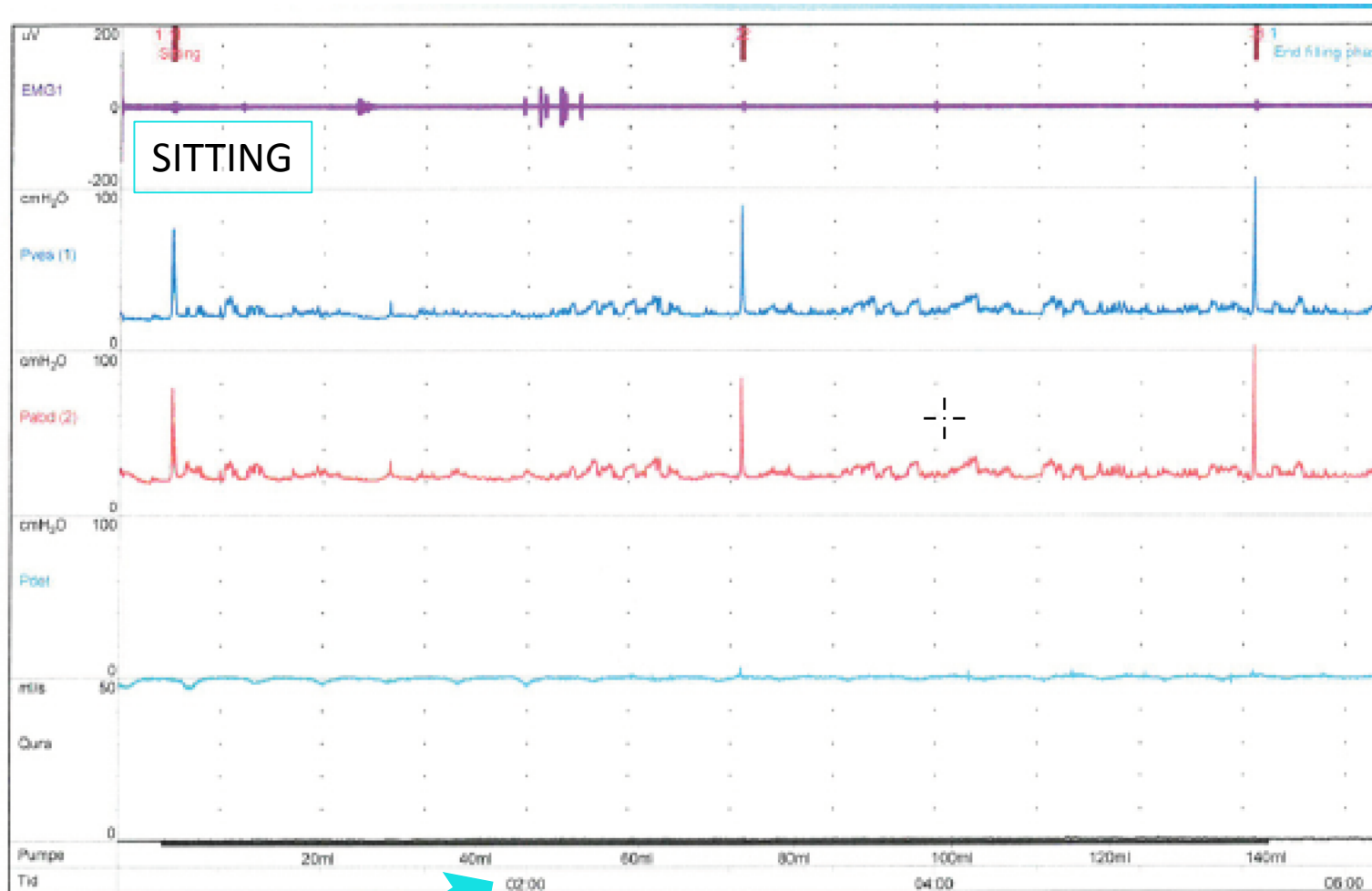
Iroflowmetri Resultater

VOID	2 / 130 / 4
Qmax	1,7 ml/s
Time to Qmax	- s
Total volume	133 ml
Flow tid	135 s
Total tid	147 s
Gennemsnits flow	1,0 ml/s
Residualurin	4 ml

URETHRAL PRESSURE PROFILE



CYSTOMETRY

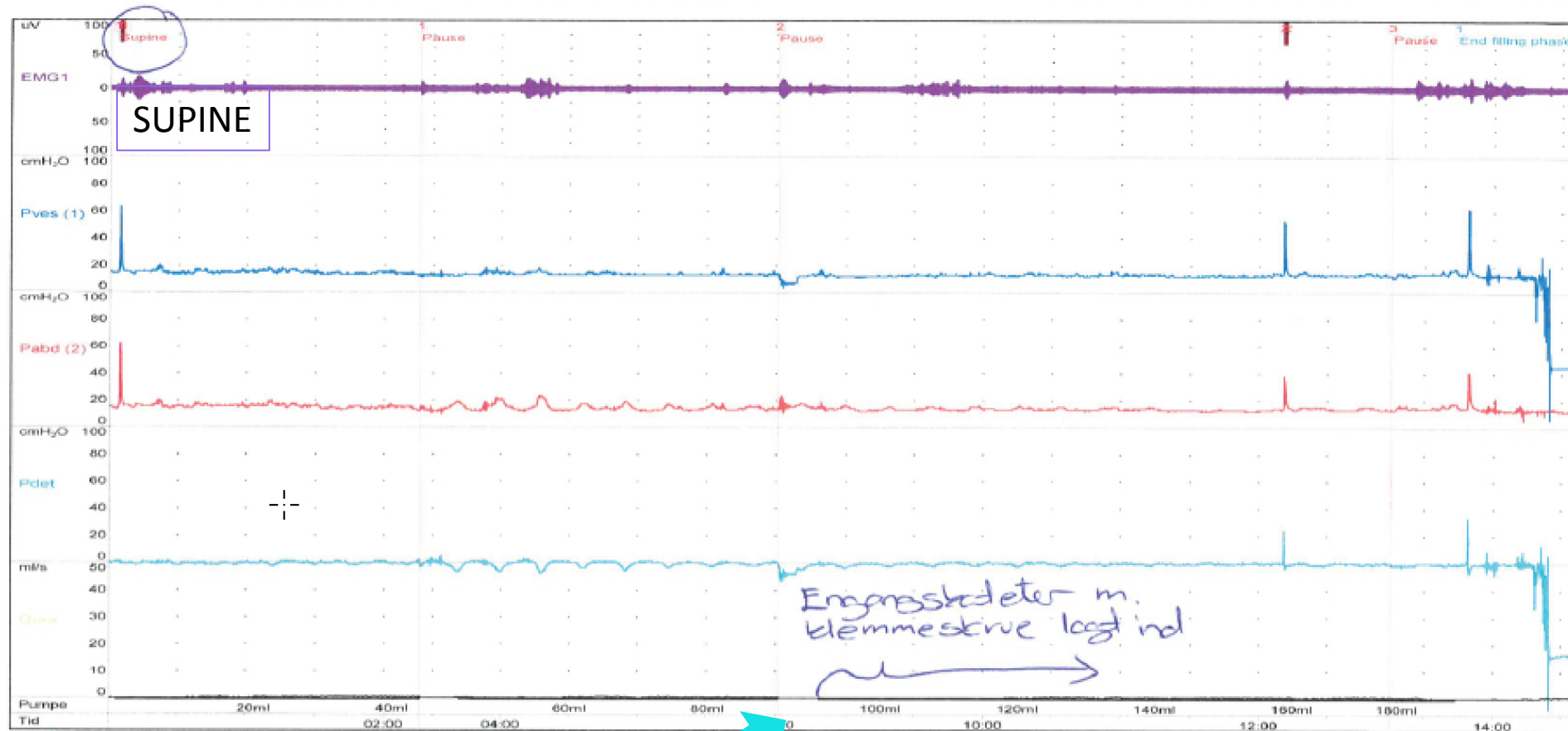


SITTING



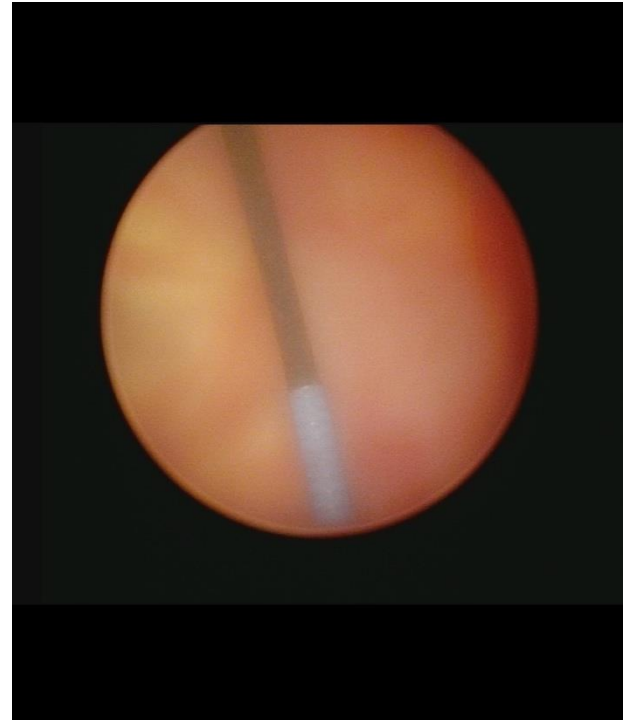
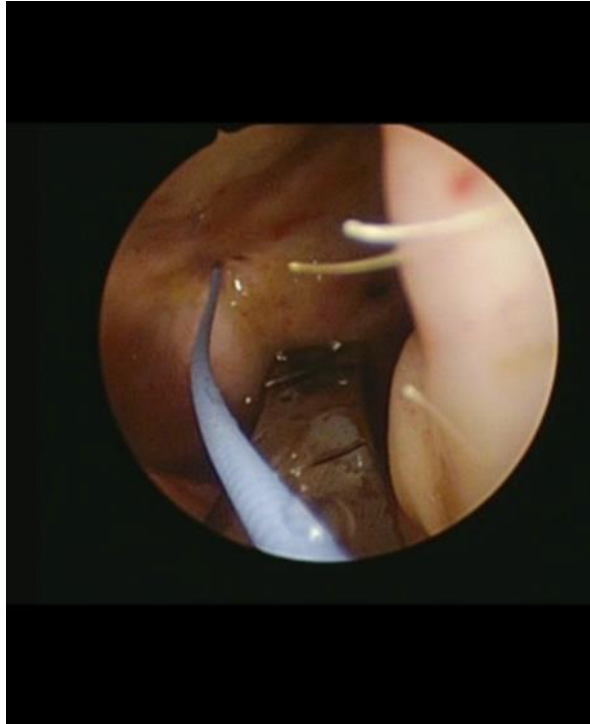
TRICKLES OUT

BLADDER HAS NO CAPACITY



CATHETER INTRODUCED

CYSTOSCOPY WAS REPEATED



Vesico-vaginal fistula