

# Chlamydia trachomatis infection in women in Germany, 2008-2014



Dudareva-Vizule S<sup>1</sup>, Jansen K<sup>1</sup>, Haar K<sup>1</sup>, Sailer A<sup>1</sup>, Hofmann A<sup>1</sup>, Hamouda O<sup>1</sup>, Bremer V<sup>1</sup>

## Background & Aim

- Chlamydia trachomatis (CT) infections not reportable in Germany, Limited data on prevalence among women
- Screening for CT in pregnancy in place since 1995
- Opportunistic CT screening programme for women <25 years
  - in place since 2008
  - CT tests covered by the state health insurance, however physicians not remunerated for counselling

**Aim:** We assessed positivity rate of CT-infection and coverage of CT screening programme for women <25 years to develop recommendations for prevention

## Methods

- 2010: voluntary laboratory-based sentinel surveillance system implemented
- Data collection
  - Collection of retrospective (starting 2008) and prospective data on CT tests together with results and information on age and test reason
  - Test reason: Screening for women <25 years, screening in pregnancy, diagnostic testing (in case of symptoms), reason unknown
- Data analysis
  - Only data from women included
  - Calculation of proportion of positive tests by age and test reason over time
  - Estimation of proportion of target population <25 years reached by screening for women
  - Chi2 test and two-sample t-test

## Results

### Data 2008-2014 (as of 28 July 2015):

- 24 laboratories participating
- 3,863,805 tests → 93% (3,586,830) from women

Figure 1: Distribution of CT tests by region in Germany per 100,000 population. 2008-2014



Figure 2: CT tests by test reason, 2008-2014

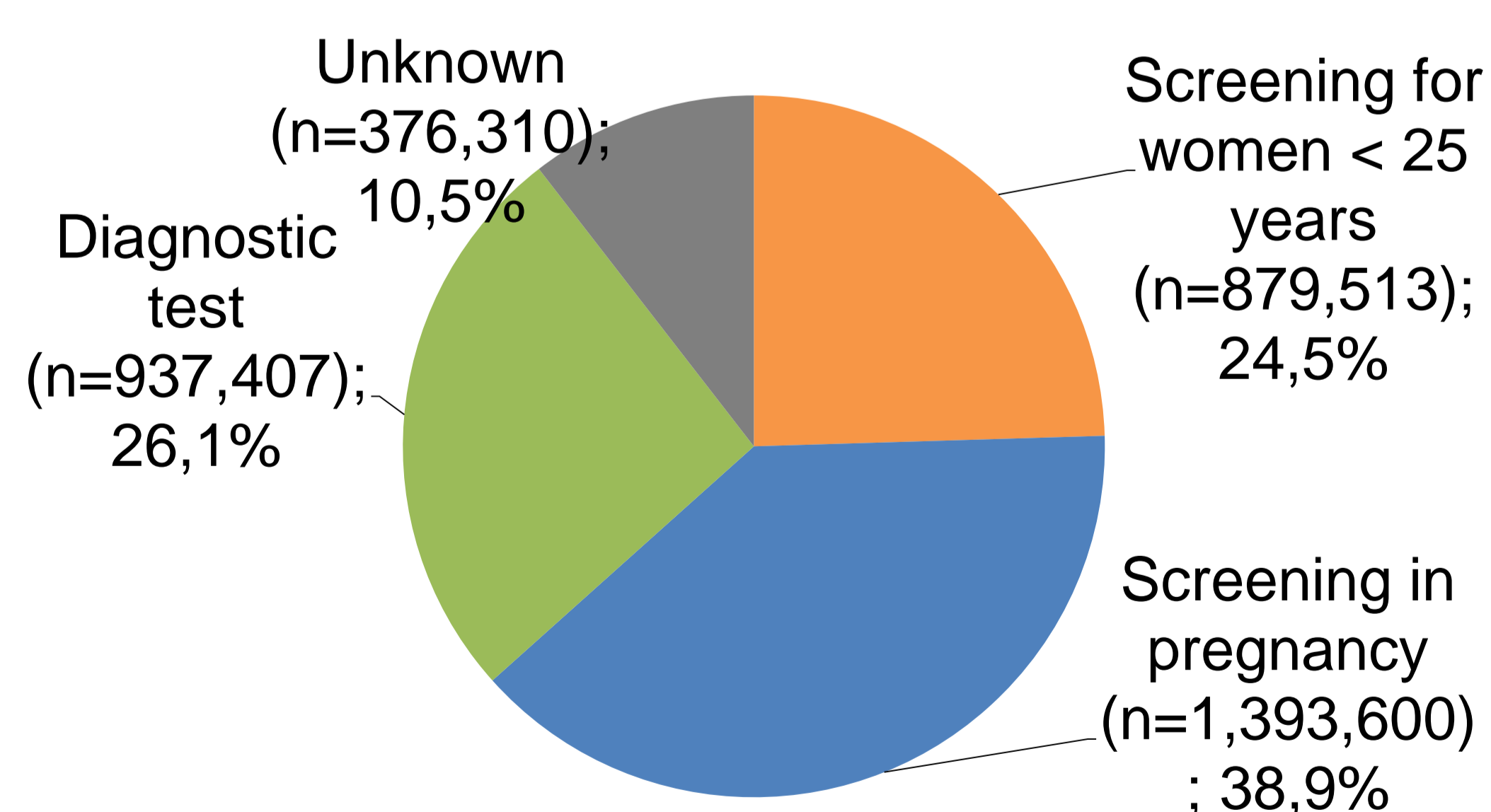
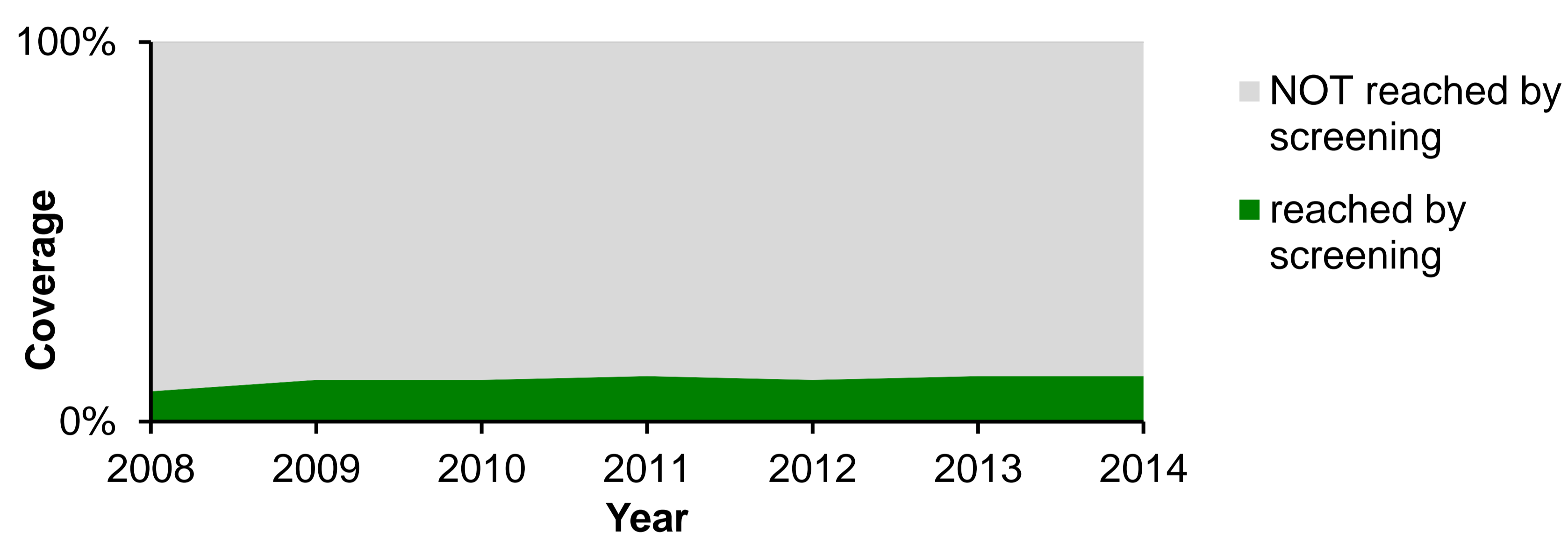


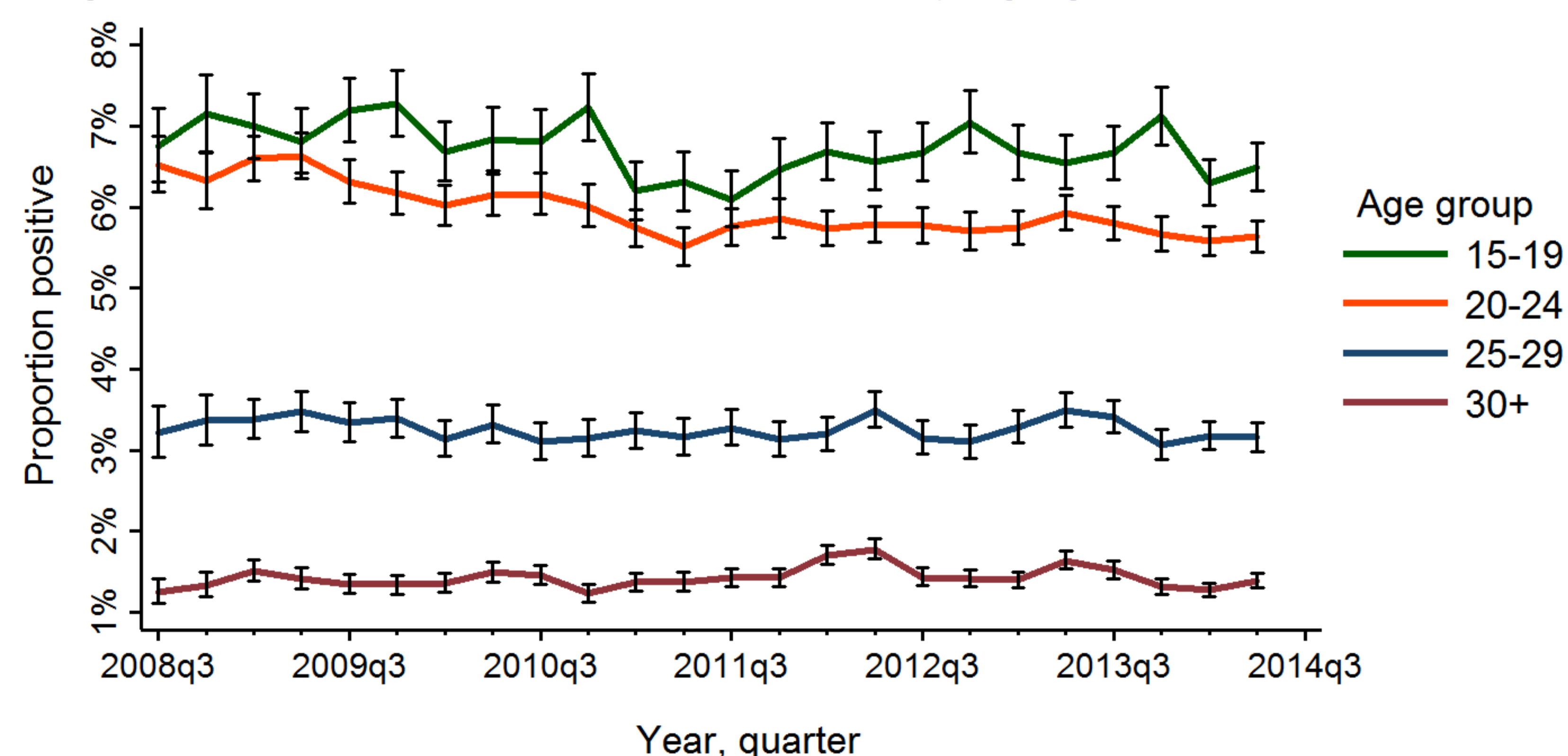
Figure 3: Coverage of Screening for women <25 years, 2008-2014



### Proportion of positive CT tests :

- Overall 3.8%
- Higher in age groups 15-19 (6.4%) and 20-24 (5.8%) compared to 25-29 (3.1%) and 30+ (1.4%), p-value<0.001
- Gradual decrease among age groups 15-19 and 20-24 years from 2008 to 2014, p-value <0.001, Figure 4:
  - 15-19 years: 7.43% → 6.56%
  - 20-24 years: 6.63% → 5.66%

Figure 4: Proportion of positive CT tests by age group, 2008-2014



## Conclusions

- High proportion of young women testing positive for CT
- Gradual slight decrease in proportion of positive tests among women aged 15-24 years
- Screening for women <25 years coverage in Germany:
  - Coverage insufficient
  - Did not increase substantially in the last years

## Recommendations

- Promote screening for women <25 years among:
  - Target population
    - Awareness campaigns for young women
  - Physicians
    - Remuneration for counselling