



# Thailand National Single Window



Information and Communication Technology Bureau  
Thai Customs Department

# Thailand National Single Window

## Why should have Single Window

1. Request for Quote

3. Purchase Order

Buyer/  
Importer

16. Proof  
Delive



Freight F

Clearance  
Documents

Government  
(Import)

at Destination



Seller/  
Exporter

Shipper Order/Instr.  
+ Invoice  
+ Packing List



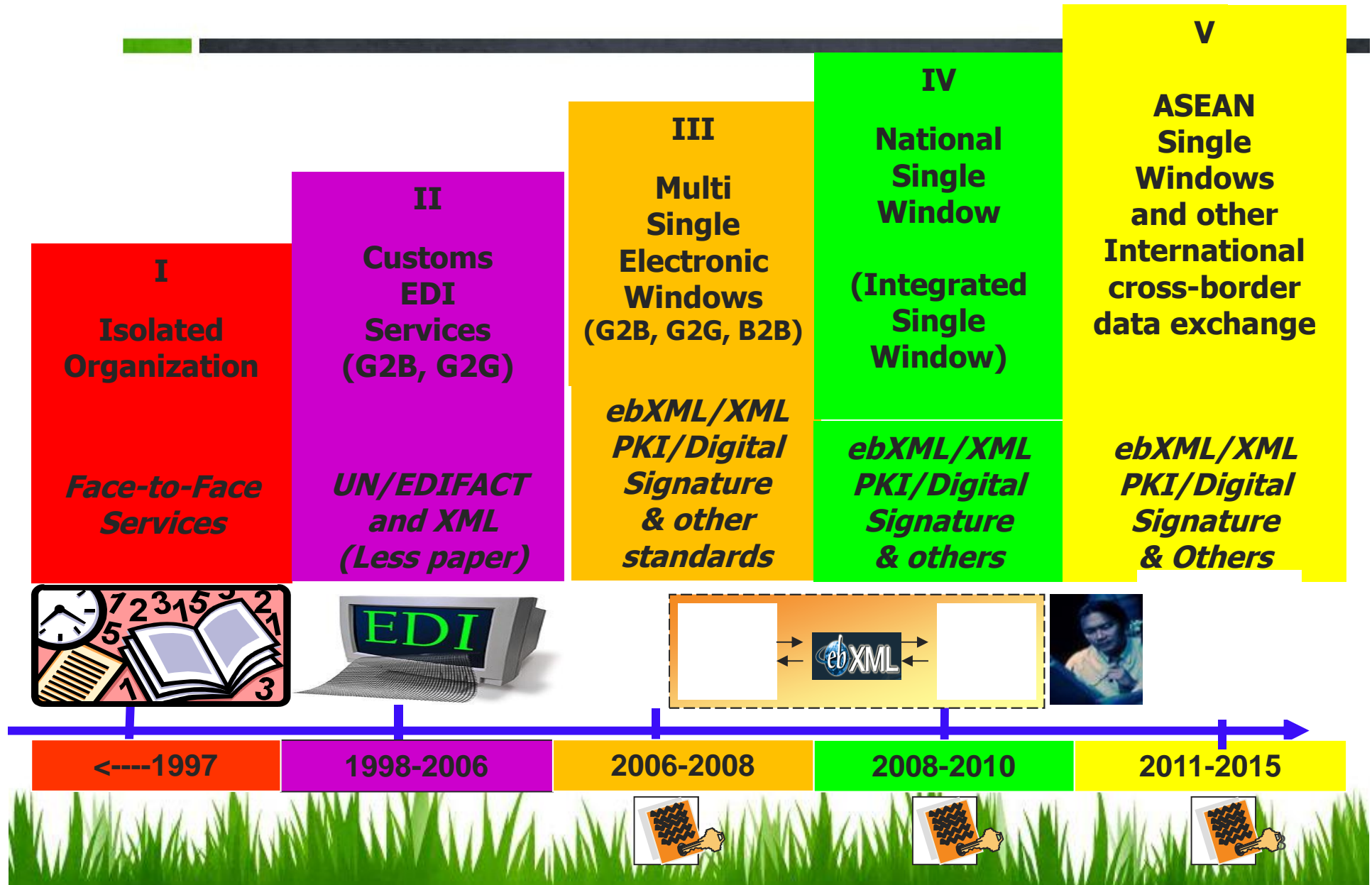
Freight Forwarder

Clearance  
Documents

Government  
(Export)

**~ 30-40 parties**  
**~ 40 documents**  
**~ 200 data elements**  
**~ 60-70 % data re-keying**

# Evolution of e-Customs and Thailand National Single Window



# Single Window Concept

## UN/CEFACT

### Recommendation No. 33

- “A facility that allows party involved in trade and transport to lodge **standardized information and documents** with a **single entry** point to fulfill all import, export, and transit-related regulatory requirements. If information is **electronic**, then individual data elements should only be **submitted once**.”

## WCO

### World Customs Organization

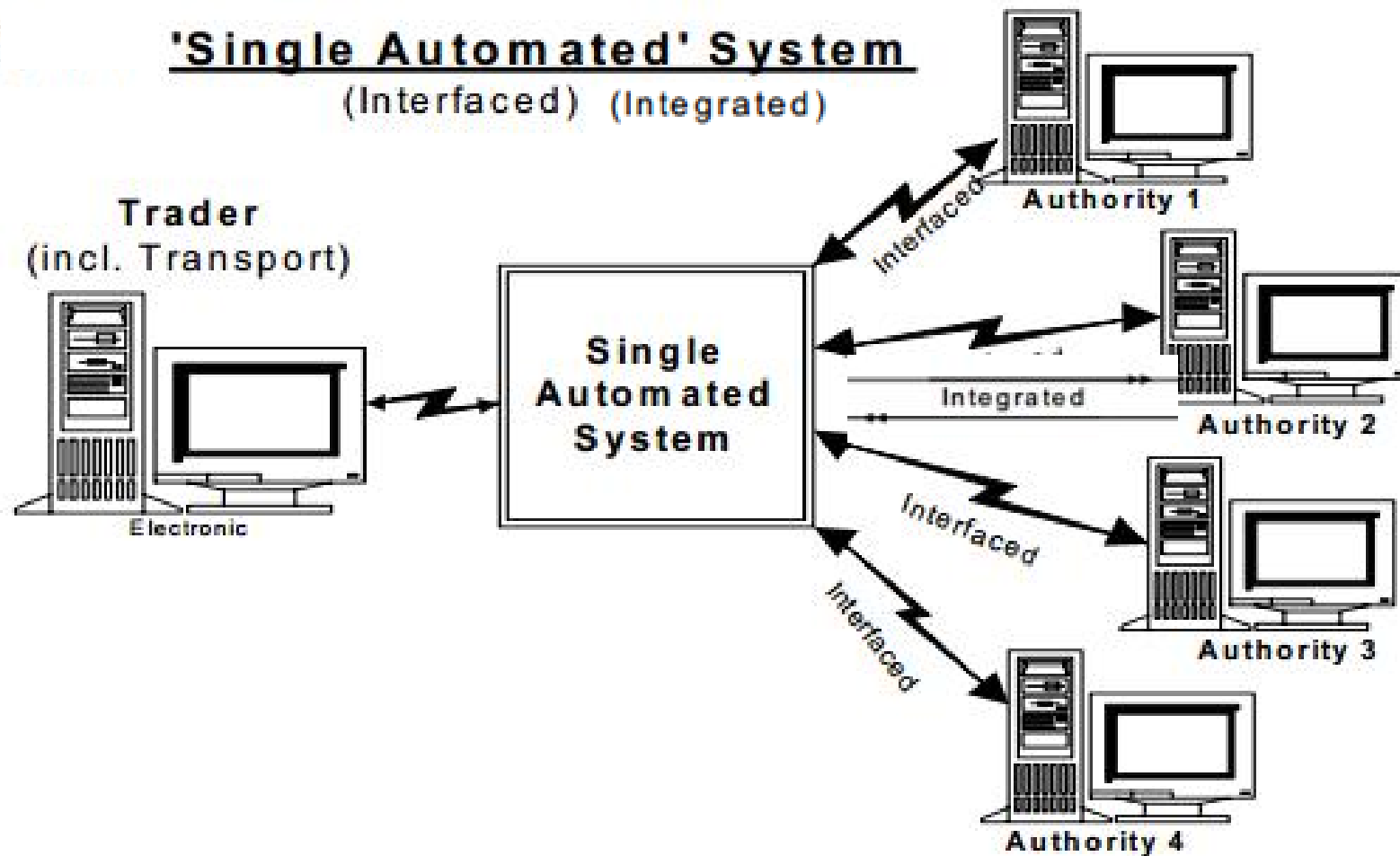
- A Single Window Environment is a cross border, ‘intelligent’, facility that allows parties involved in trade and transport to lodge standardized information, mainly electronic, with a **single entry** point to fulfill all import, export and transit related regulatory requirements.

## ASW

### ASEAN Agreement to Establish ASEAN Single Window

- **Single submission**, single processing and single decision making for customs release and clearance (summary)

# Thailand Single Window Conceptual model







## Thailand National Single (roles & participants)

### Electronic document Exchange Service

- ✓ Document exchange between government agencies (G2G) via Government Information Network (GIN) supported by MICT
- ✓ Data exchange between government and business sectors (G2B) via VAN/VAS providers
- ✓ Data exchange between business sectors (B2B) via VAN/VAS providers

### National and International Gateways

- ✓ Integrate / link VAN/VAS (import, export and logistics)
- ✓ National gateway for data exchange between Thailand and ASEAN Members
- ✓ National gateway for data exchange between Thailand and other countries

### Participants / Clients

- ✓ 40 government agencies (35 user agencies and 5 support agencies)
- ✓ 125,000 traders (importer, exporter, customs broker, freight forwarder, shipping lines, air lines, sea port, air port, logistics service providers, bank,...)
- ✓ Others (ASEAN Member and other countries....)

# National Commitment

**National Logistics Committee** chaired by the Prime Minister

- ✓ Minister of Finance, Minister of Industry, Ministry of Commerce, Ministry of Transport, NECDB, ....
- ✓ Executives from business sectors
- ✓ Thailand National Single Window is one of the National Agendas

**ASEAN Agreement to establish the ASEAN Single Window**

- ✓ ASEAN – 6 (2008)
- ✓ ASEAN - 4 (2012)

**Leading Agency**

- ✓ The Customs Department, Ministry of Finance

**Business/Financial Model of National Single Window**

- ✓ Initial funding by the government (100%) supervised by the Customs
- ✓ No transaction fee for data exchange among government and trade



# Resources Mobilization / Partnership between Government & Trade

## National Committees and Working Groups

- ✓ National Logistics Committee of Thailand
- ✓ National Sub-committee on Data Integration for Import, Export and Logistics
- ✓ Steering Committee on National Single Window Development
- ✓ Committee on Regulatory Framework and Quality Assurance of Thailand National Single Window
- ✓ Inter-Agency Technical Working Group for National Single Window
- ✓ Inter-Agency Legal Working Group
- ✓ Committees and Working Groups (within each agency)

## Business process analysis and reforms

- ✓ Group discussion and consultation to simplify and streamline business process among government and business sectors
- ✓ Workshop (focus groups)

## ASEAN Meetings and Working Bodies

- ✓ AEC Council, AEM, AFM, ASEAN Customs Director-General, ....
- ✓ ASEAN Single Window Steering Committee (ASW)
- ✓ Technical Working Group for ASW
- ✓ Legal & Regulatory Working Group for ASW
- ✓ Others



# ICT and Security Framework Adoption

## National Single Window Systems

- ✓ Two National Single Windows (2 data centers)
- ✓ Data Centers comply with ISO security standard
- ✓ 24 x 7 service (non-stop operation)

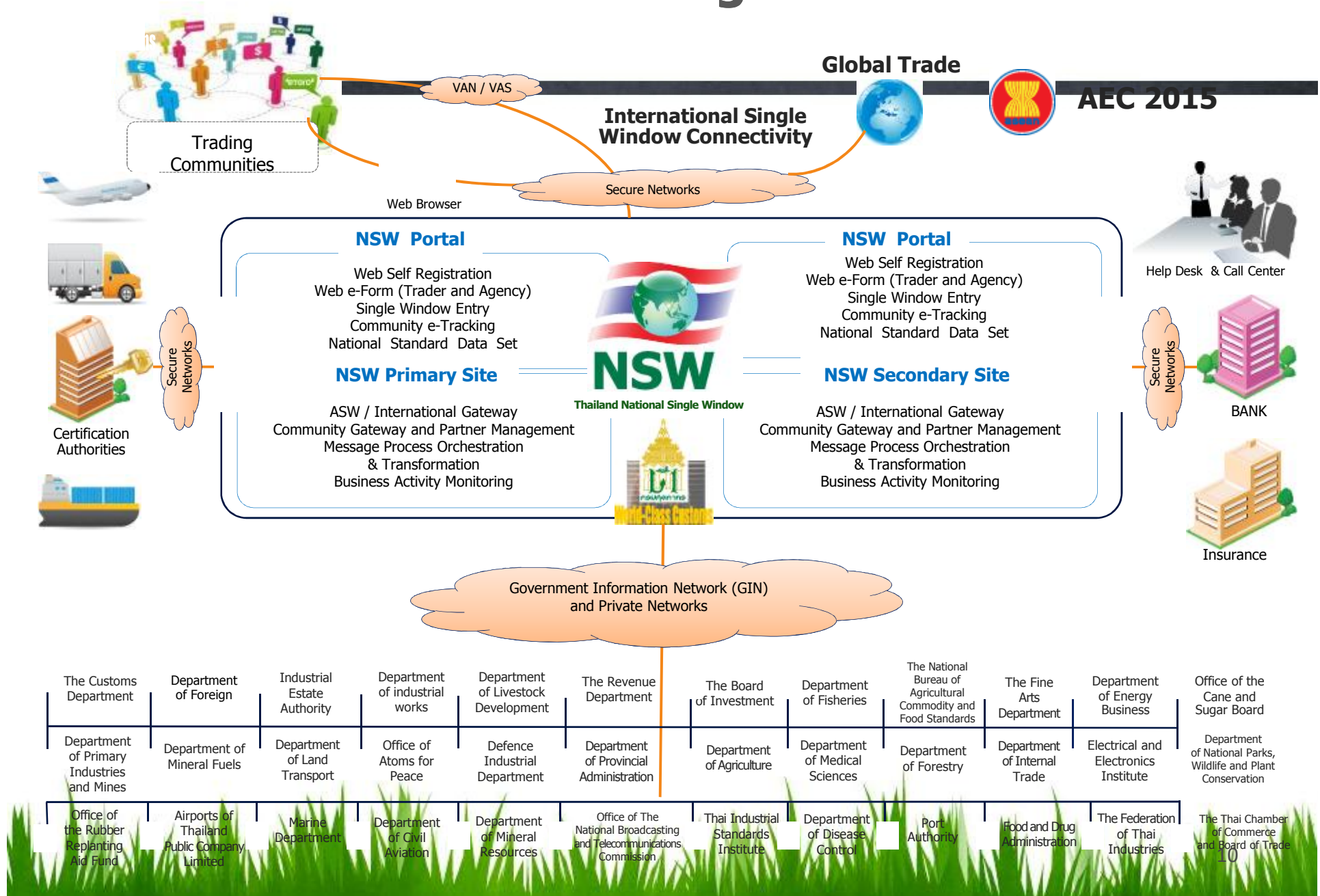
## Certificate Authorities

- ✓ National Root Certificate Authority (Government Information Technology Service)
- ✓ 3 recognized Certificate Authorities comprising CAT-CA, TOT-CA and Thai Digital ID company
- ✓ NRCA and CA inter-operability testing between Thailand and Singapore and Thailand and Taiwan to enable mutual trust and recognition for the use of different digital certificates.

## Message Security Inter-Operability

- ✓ Messages exchange within Thailand National Single Window environment utilize digital signature and encryption.
- ✓ Key Pair : RSA 1024 bits, Signature Algorithm : SHA1 with RSA, Data Encrypt Algorithm : 3DES
- ✓ Secure Socket Layer (SSL)
- ✓ Others

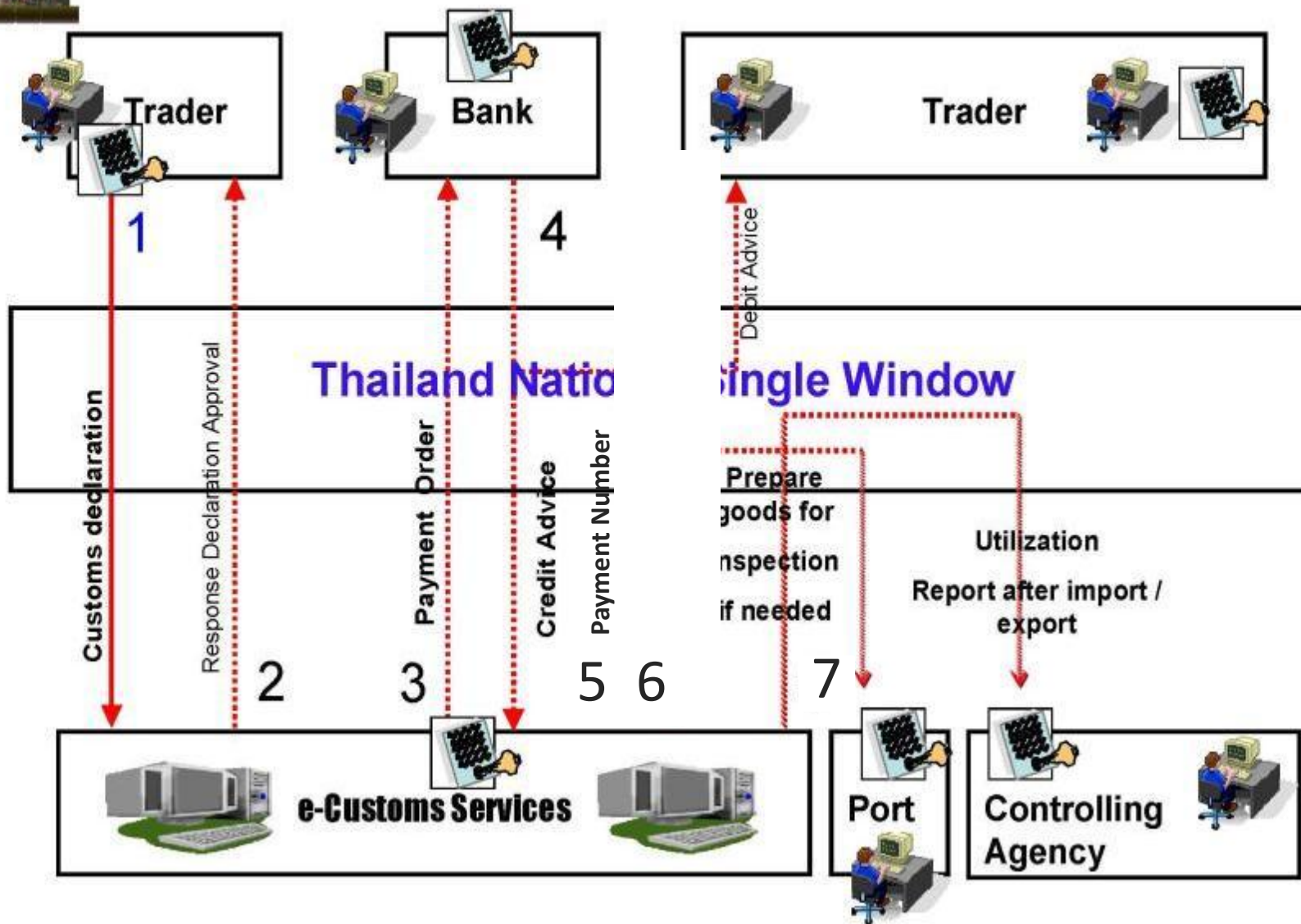
# Thailand National Single Window 2013



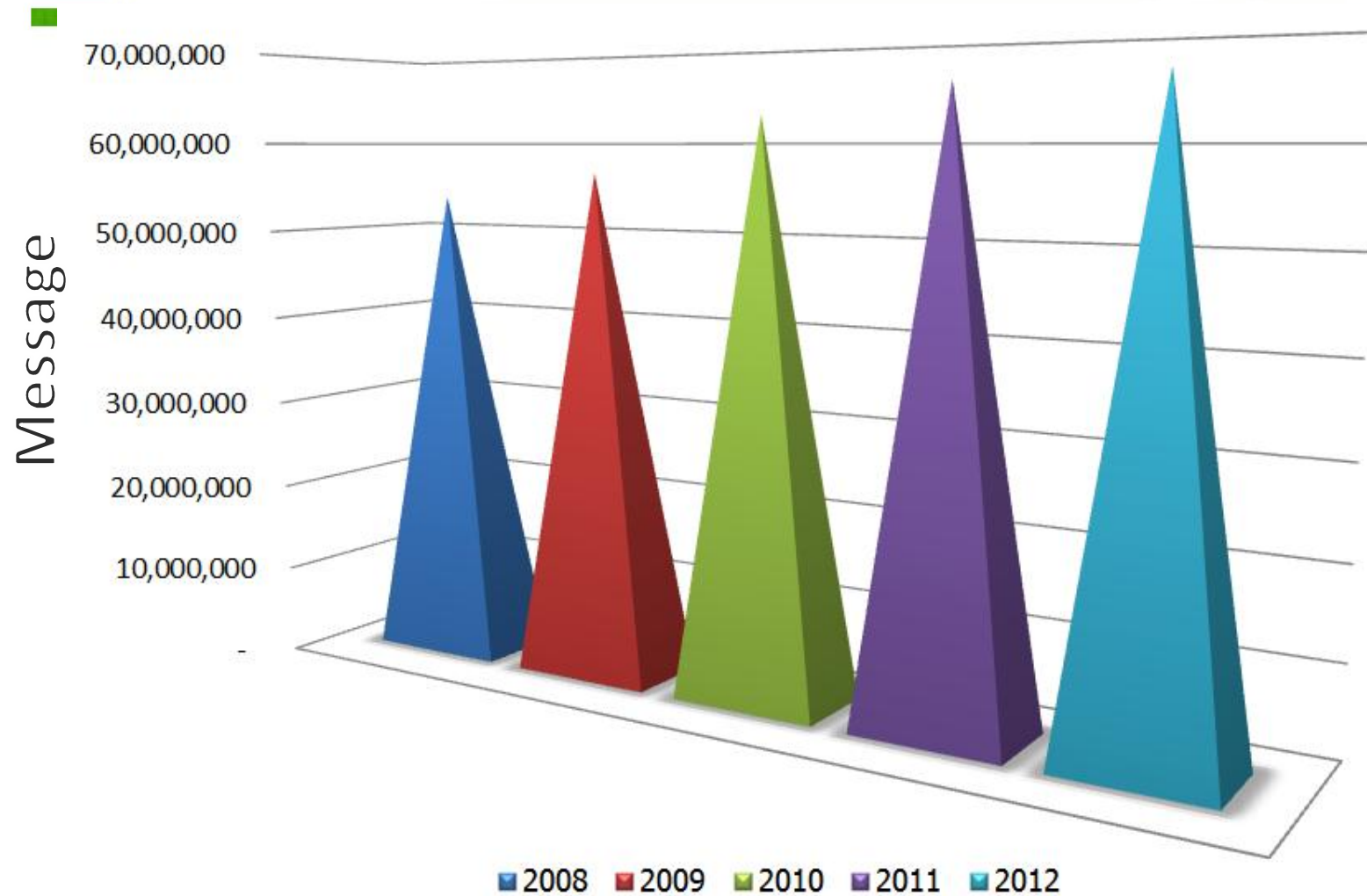




## A Single Submission of Electronic Customs Declaration

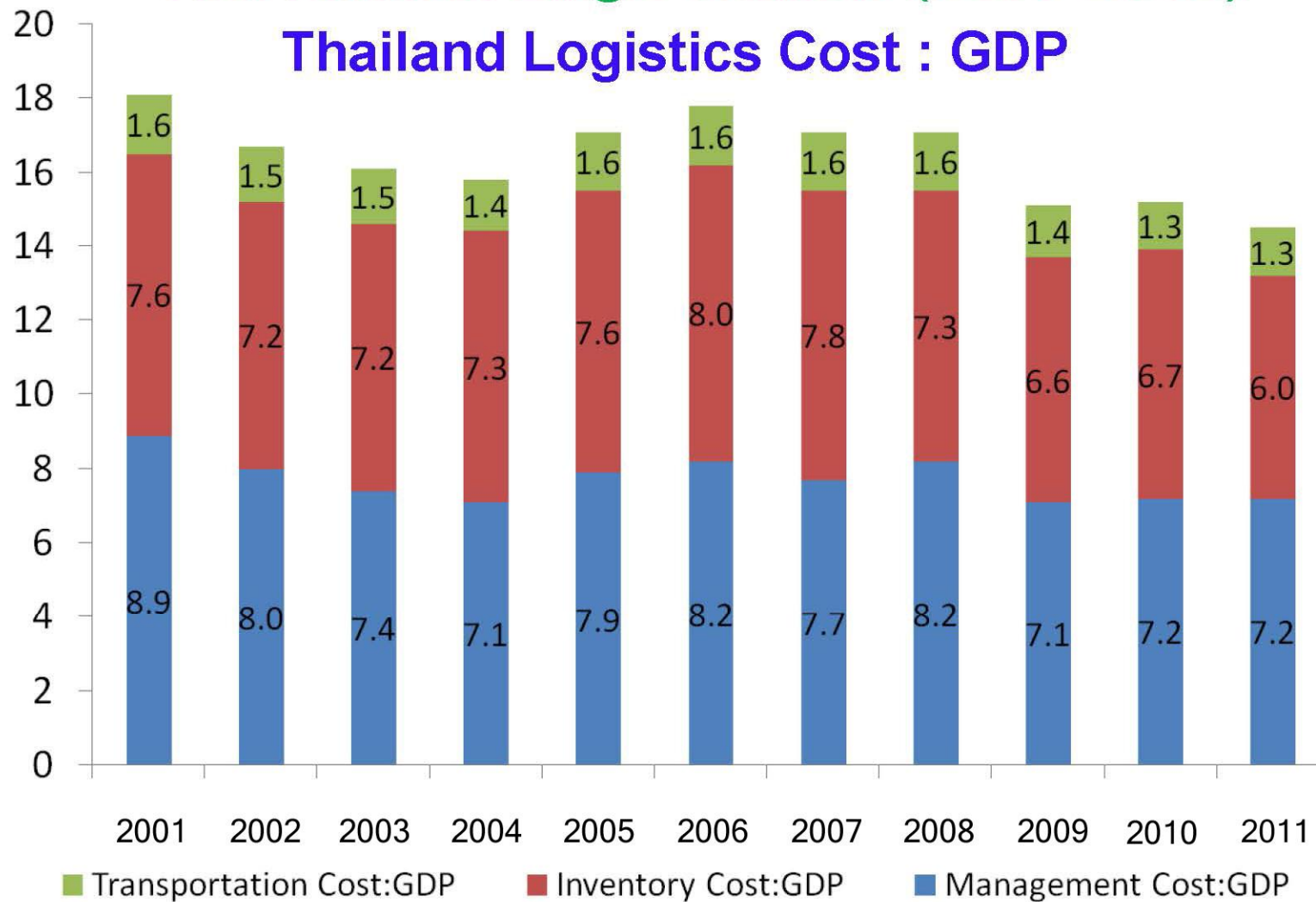


# Thailand National Single Window NSW Message Statistics





**Potential Benefits**  
**Thai National Single Window (2008-2012)**  
**Thailand Logistics Cost : GDP**



**Source : NESDB**

# Thai Customs Electronic Systems : TCES

## Front Office System (17 systems )

e-Export  
e-Import  
e-Payment  
e-Licensing  
e-Manifest  
e-Express  
e-Tracking  
Profile system  
Account system  
Drawback  
system  
Reference file  
system  
Registration  
system  
RFID System  
GIS System  
Airport interface  
system  
Customs Fee  
System  
ebXML Gateway

## Back Office System (16 systems)

Investigation and  
Suppression  
system  
Seized Good  
System  
Lawsuit  
Information System  
Unclaimed Good  
System  
Vehicle Information  
System  
Postal Manifest  
System  
Fuel Information  
Tracking  
Internal Audit  
System  
Laboratory  
Information System  
Customs Valuation  
System  
Component Parts