

Rural Health and Research Congress #RHRC2019

A review of Horse-Related Injuries from a Regional NSW Hospital

The Stockman's Plight

Dr Saksham Gupta
Surgical Resident
Wagga Wagga Base Hospital

NSW GOVERNMENT | HEALTH EDUCATION & TRAINING

1

RURAL HEALTH AND RESEARCH CONGRESS 2019



NSW GOVERNMENT | Health Murrumbidgee Local Health District

NSW GOVERNMENT | HEALTH EDUCATION & TRAINING

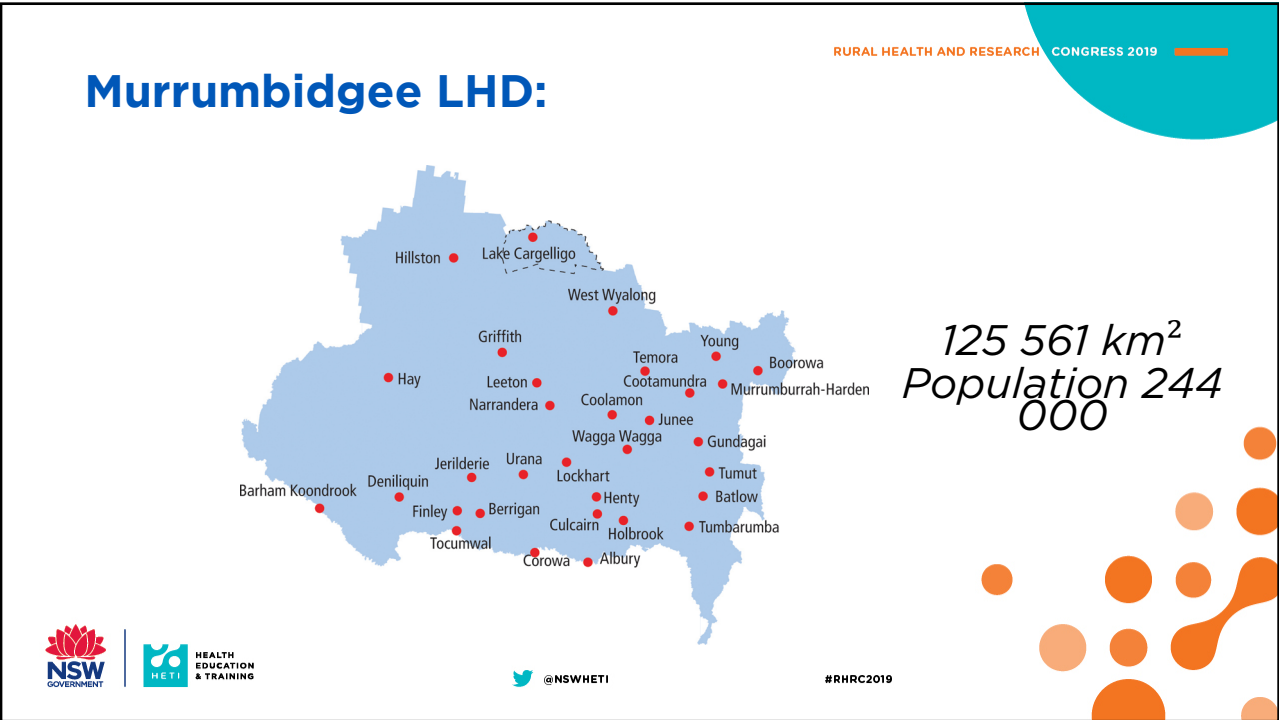
@NSWHEI

#RHRC2019

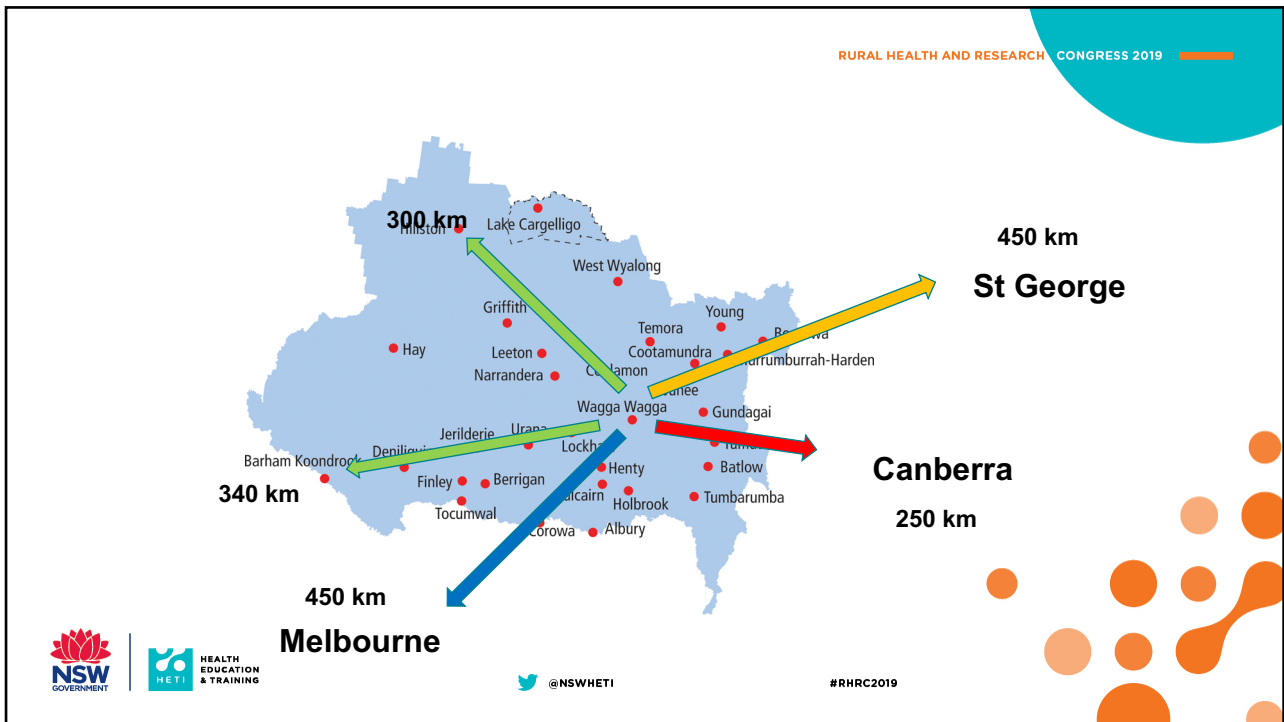
2



3



4



5

RURAL HEALTH AND RESEARCH CONGRESS 2019

Horse trauma within the Murrumbidgee


Racing and recreational use are the main activities within the city

In rural area, greater role of field and farm work

The Rodeo!

Issues with distance and accessibility

Fundamentally our injury patterns and demographics are different and need a different approach



Logos: NSW GOVERNMENT, HEALTH EDUCATION & TRAINING, @NSWHETI, #RHRC2019

6

Inclusion criteria

All horse-related trauma presentations from January 2018 till December 2018.

- *Includes adults, children and pregnant individuals*
- *Includes recreational and professionals*

*Excluded if the horse was not the primary source of injury
e.g. car ran into a horse, we would not include the car participants.*



#RHRC2019

7

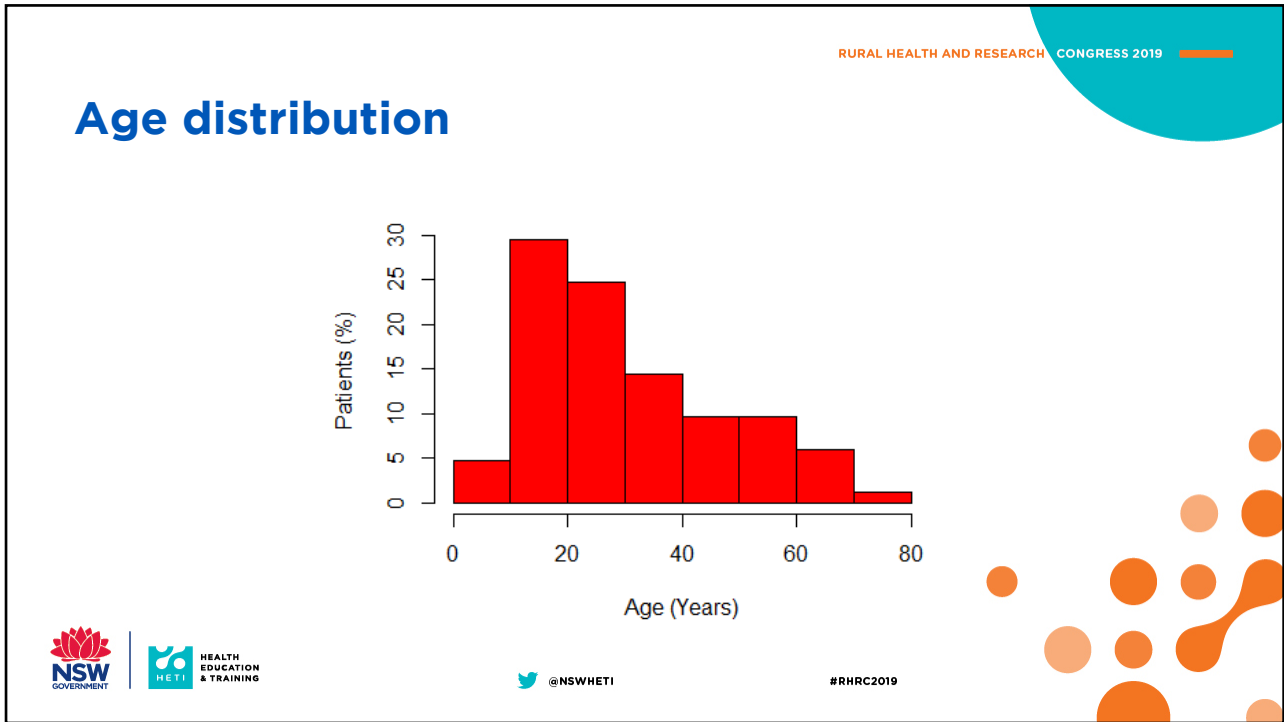
Patient demographics

	166 presentations
Mean Age (SD)	30.55 ± 17.2
Female (%)	111 (67%)
Adult (%)	131 (79%)
Experienced (%)	58 (79%)
Rider (%)	126 (78%)
Helmet (%)	47 (59%)

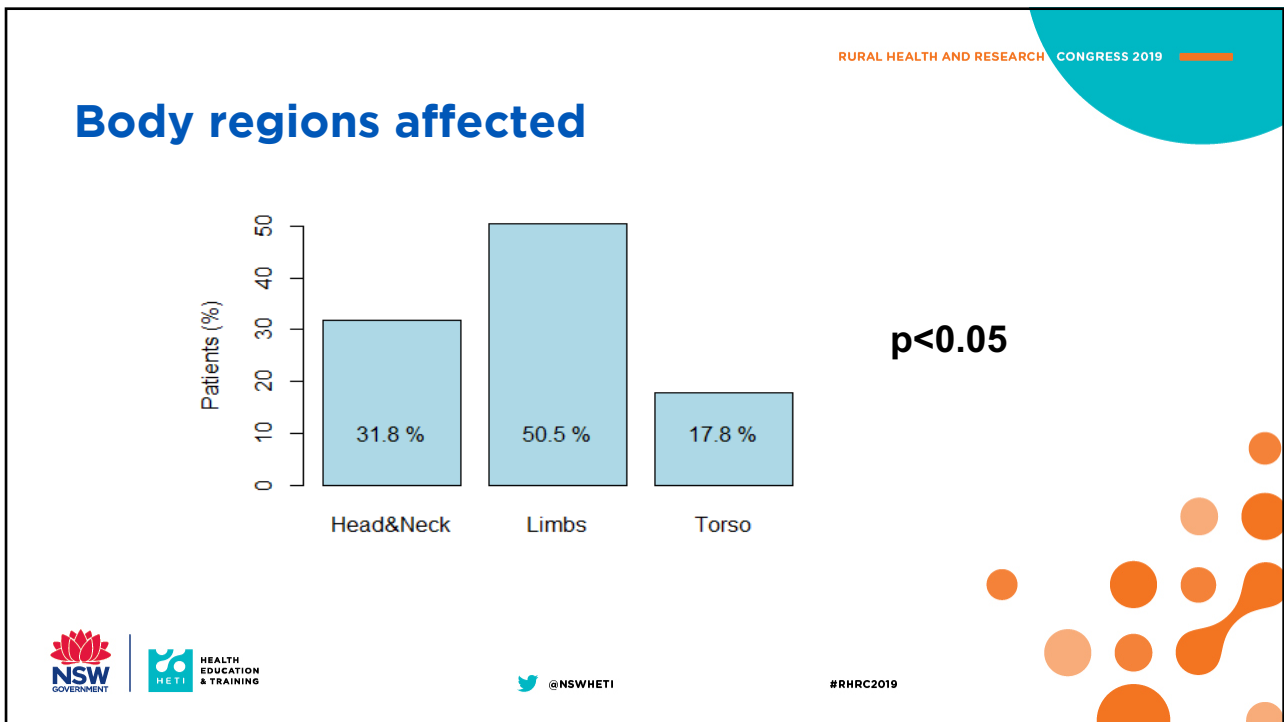


#RHRC2019

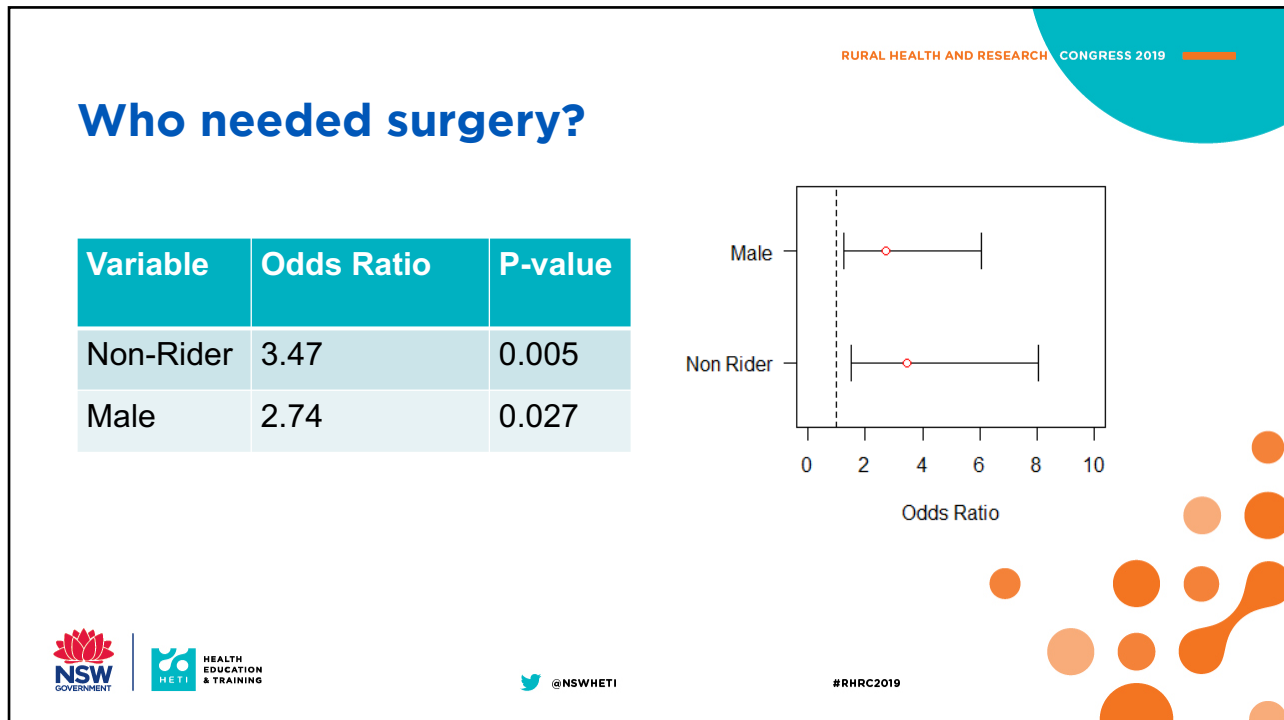
8



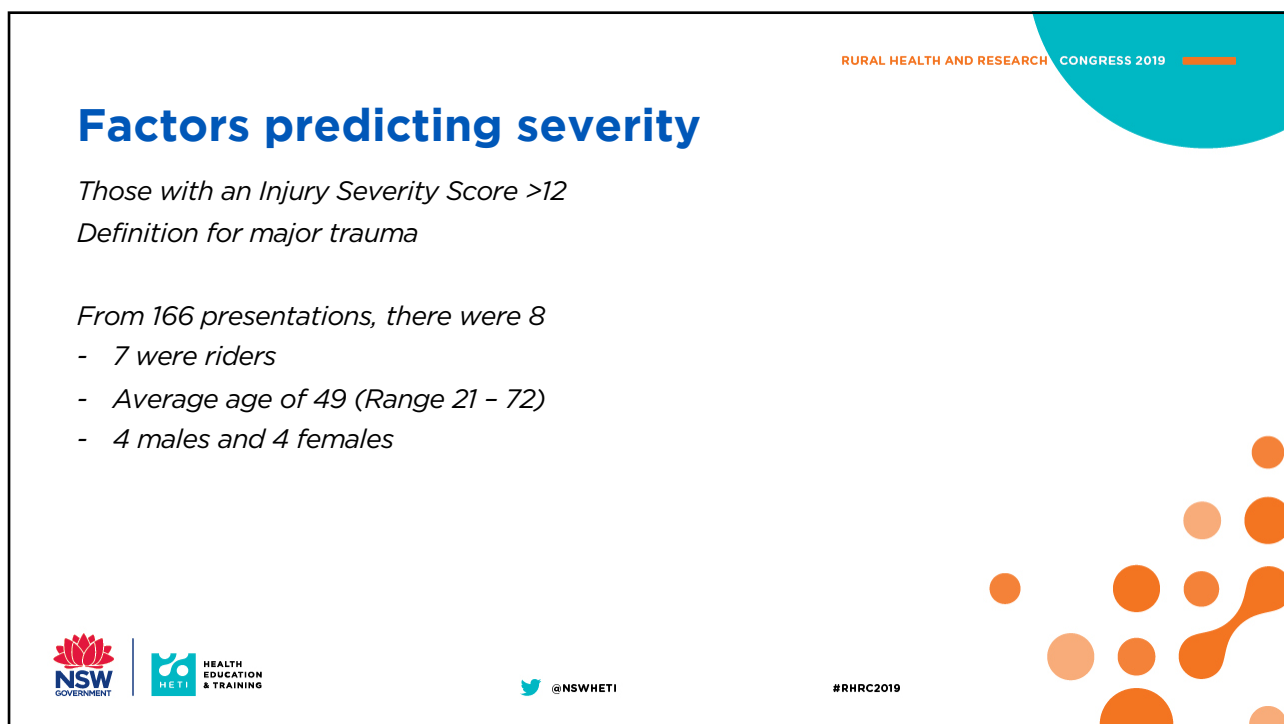
9



10



11



12

Summary points

Rural horse trauma needs a different approach to urban horse trauma

Most injuries involved the limbs, and most operations were orthopaedic

Non-riders and males were more likely to require surgery

More severe injury was experienced in the older age group

We need encourage better use of personal protective equipment



#RHRC2019

13

Acknowledgements

Mr David Buckley – Statistician

Ms Stacey Casley – Trauma CNC



#RHRC2019

14