

CHC-NSC 2018

www.chc-nsc2018.ca

Victoria, B.C.
March 26-29, 2018

Victoria, C.B.
26 au 29 mars 2018



Land and Sea Shaping the World
Terre et Mer Façonnant le Monde

*Port Terminal Facility Surveys with Multi-beam
and Vessel Mounted Terrestrial Scanner*

Ted Cain

Who We Are

Public Services & Procurement
Canada (PSPC) Geomatics /
Hydrographics is a small group within
the Pacific Region Real Property
Branch with a staff of 6 people.

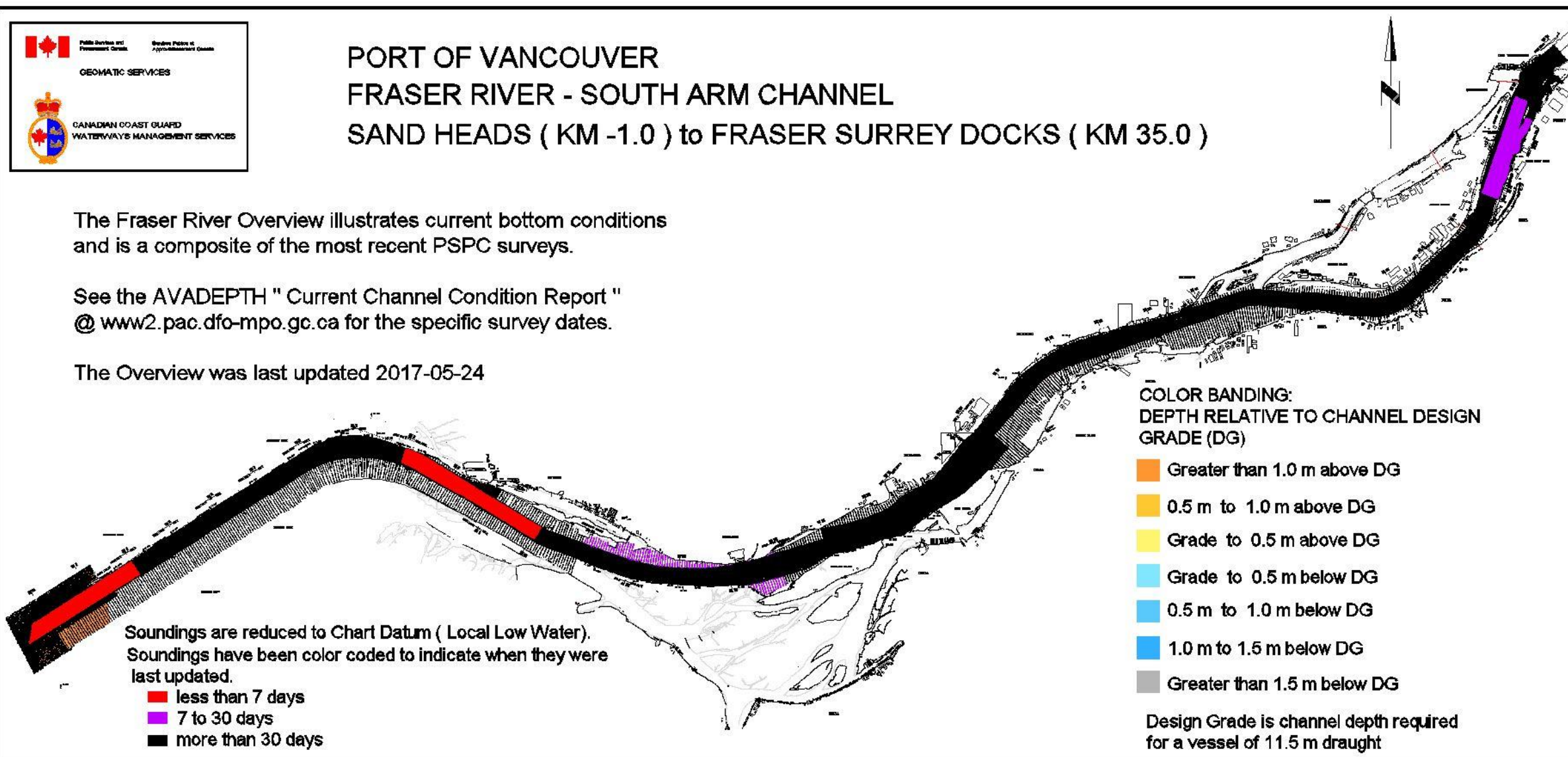


What We Do

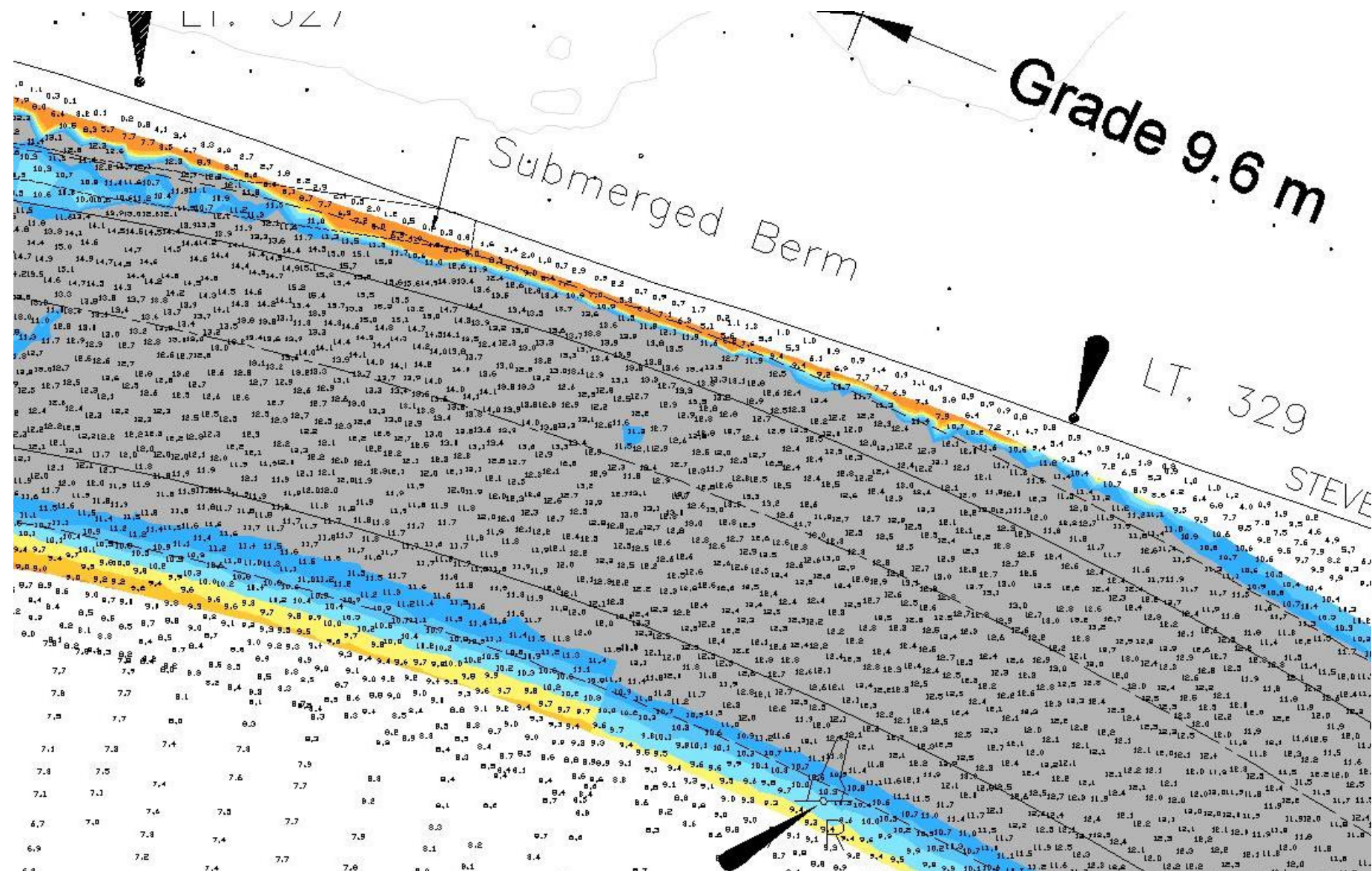
The majority of our work consists of monitoring 35 km of the lower Fraser River Deep Sea Navigation Channel with concentrated effort on 15 km of zones prone to infill.



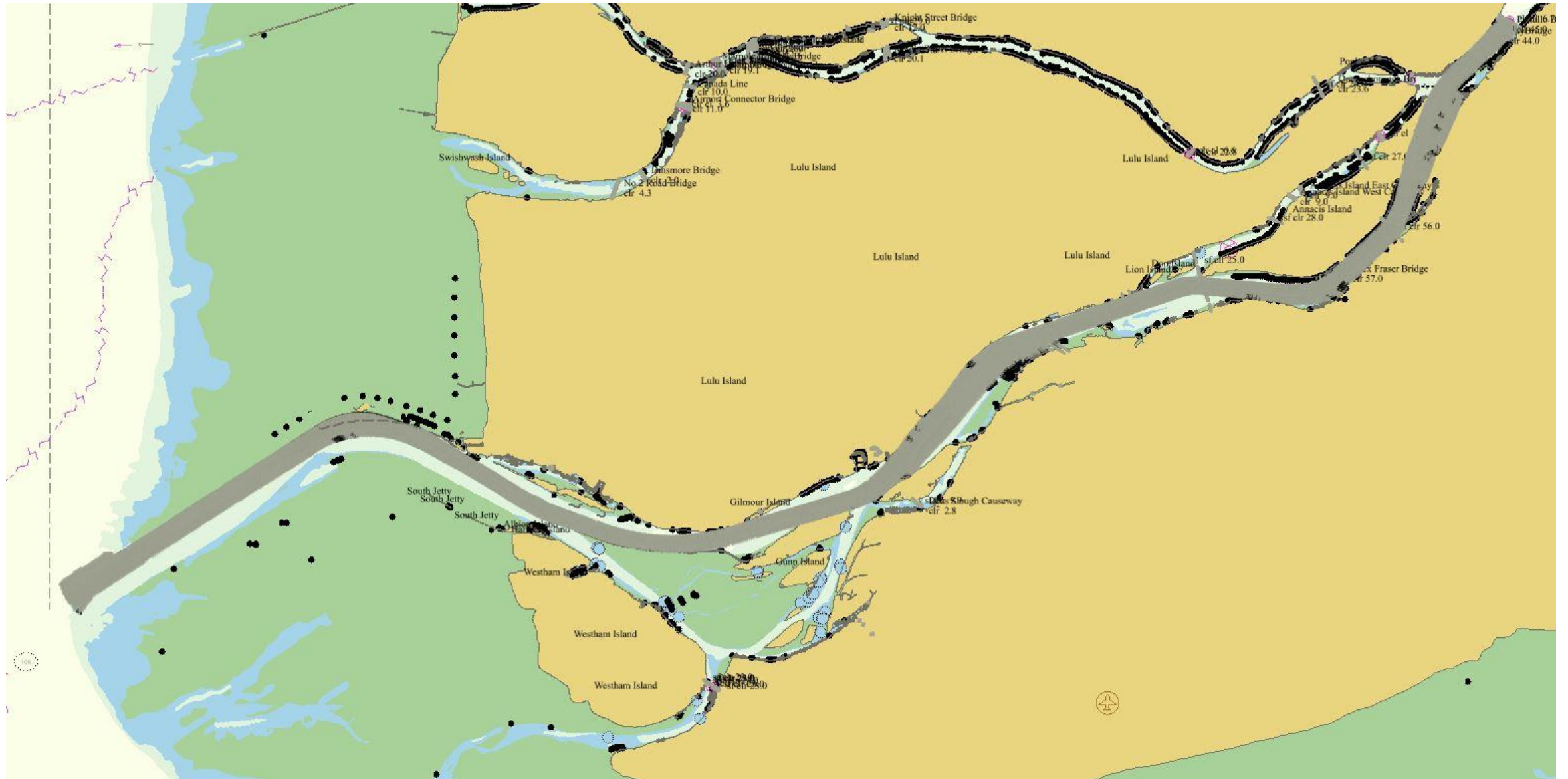
South Arm Overview of Survey Coverage



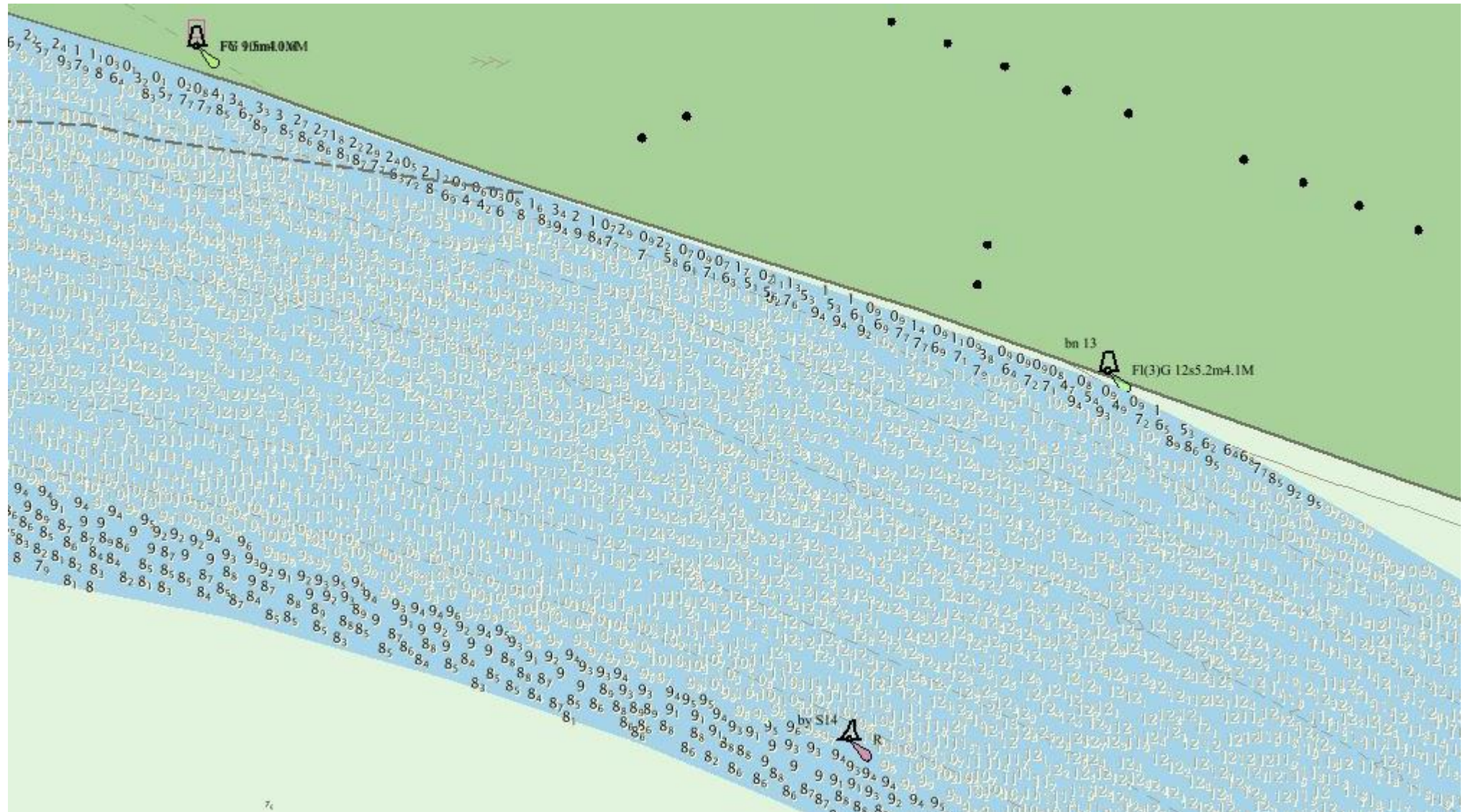
South Arm Overview at Steveston Bend



Marine Information Overlay South Arm



Marine Information Overlay at Steveston Bend (Fraser River)



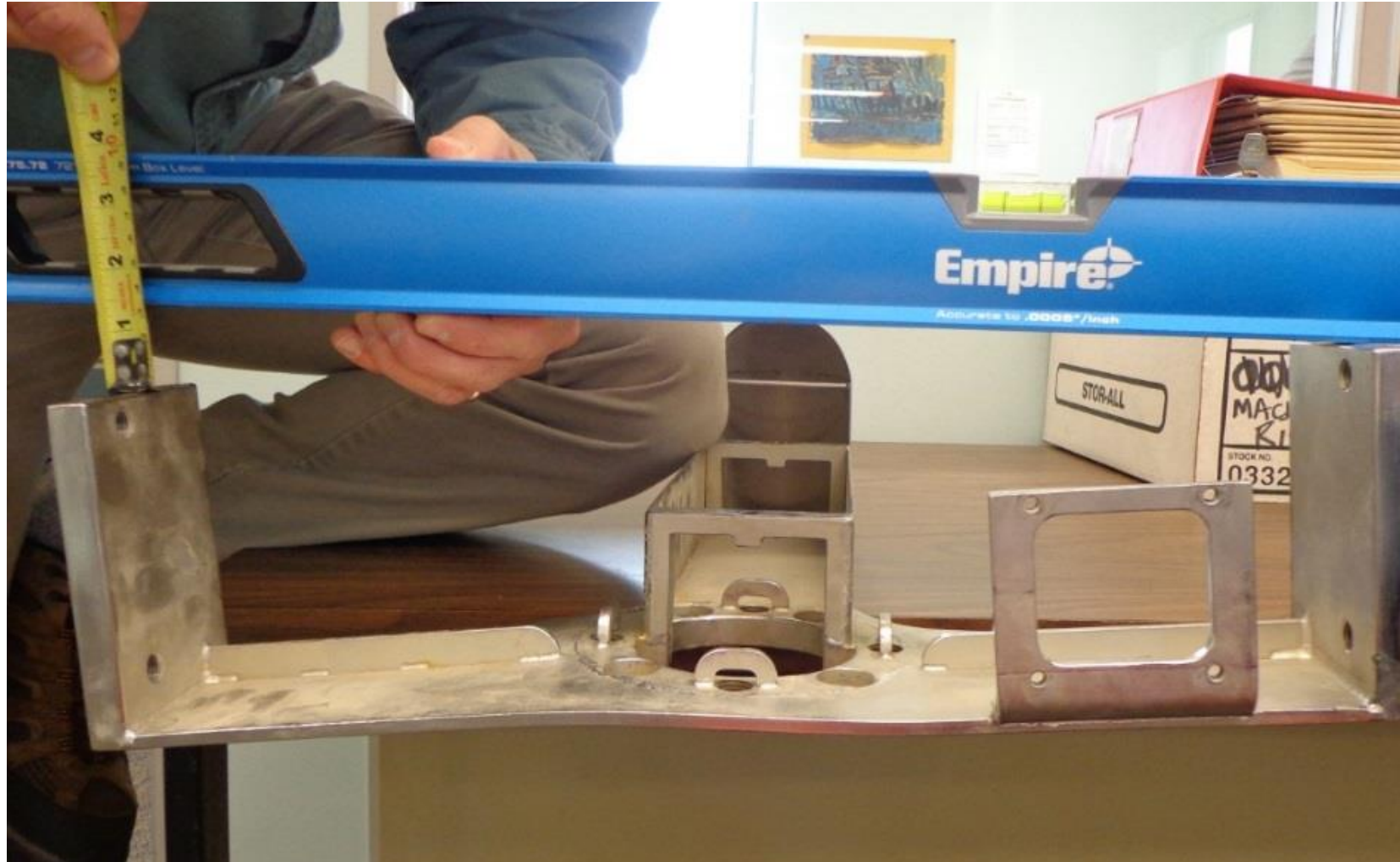
The Catalyst for Integrating Multi-beam & Scanner



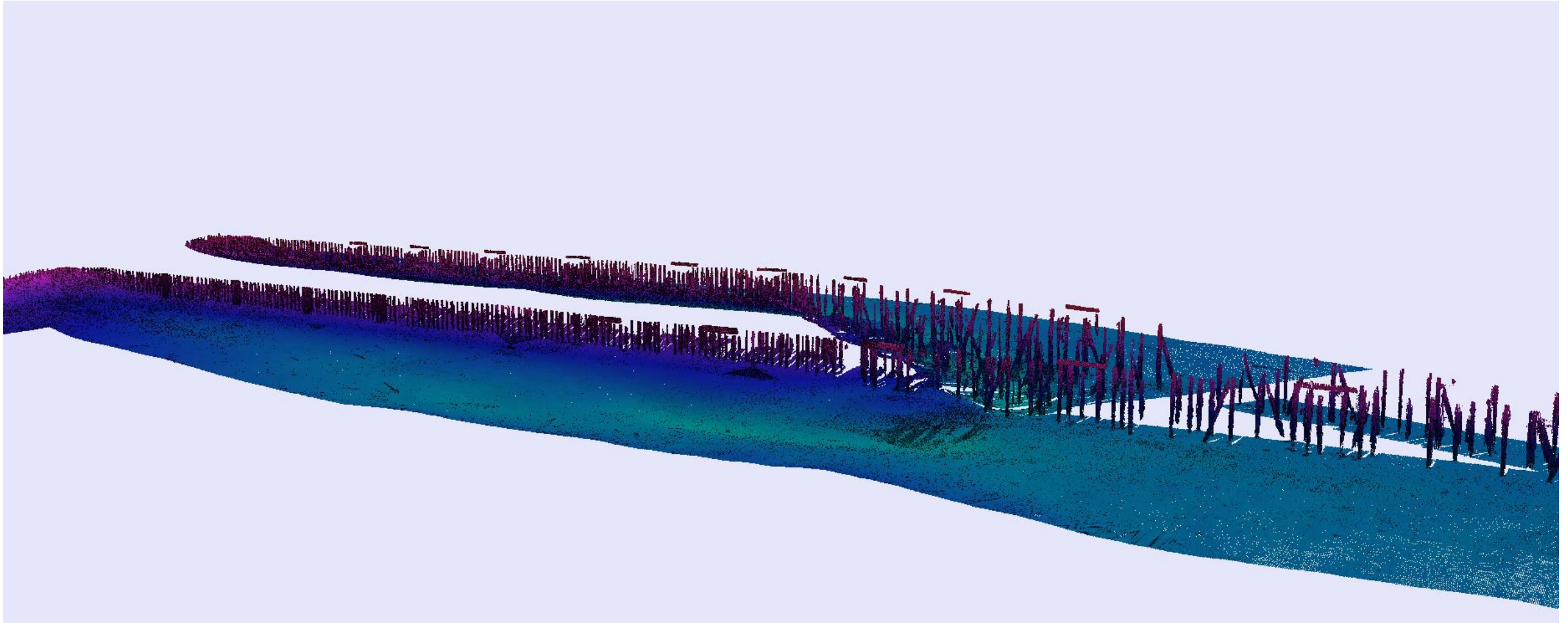
Adjustable Transducer Mount & Scanner Installation



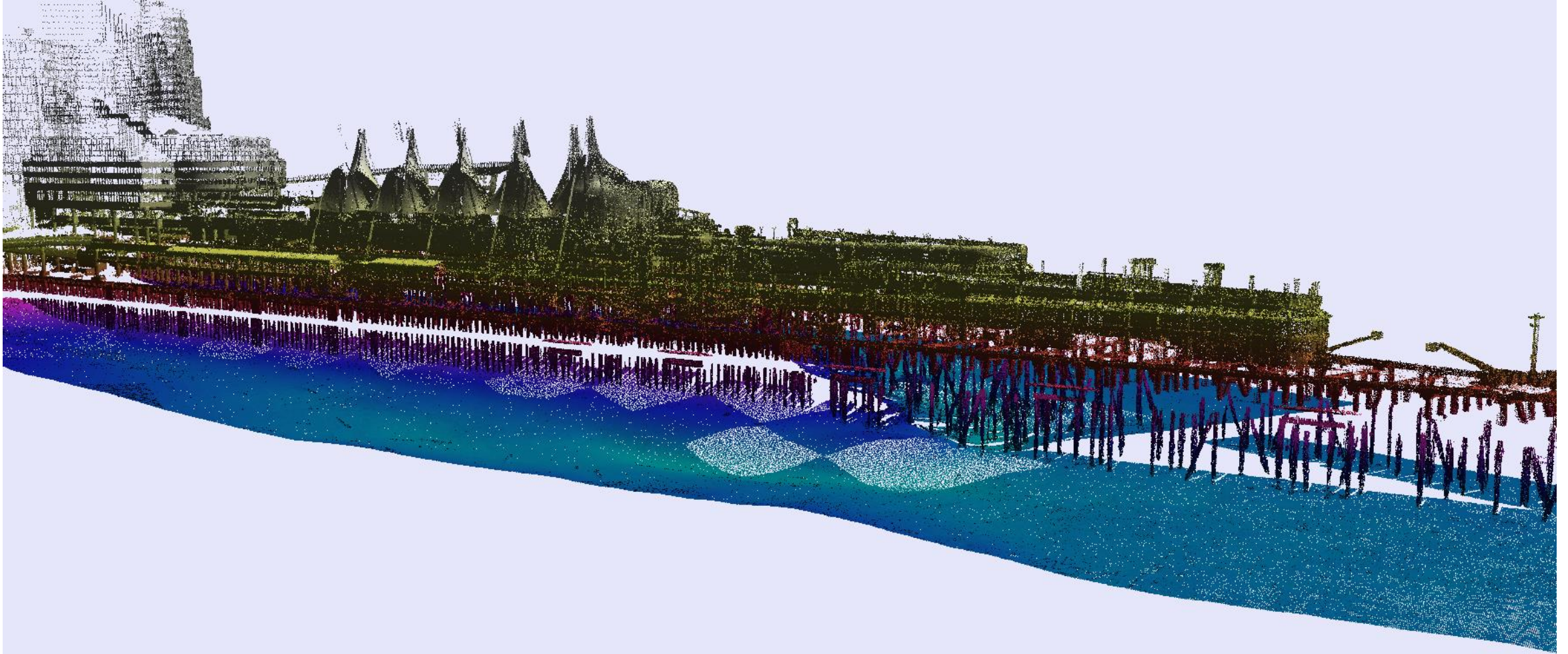
Procedure & Survey Methodology Changes



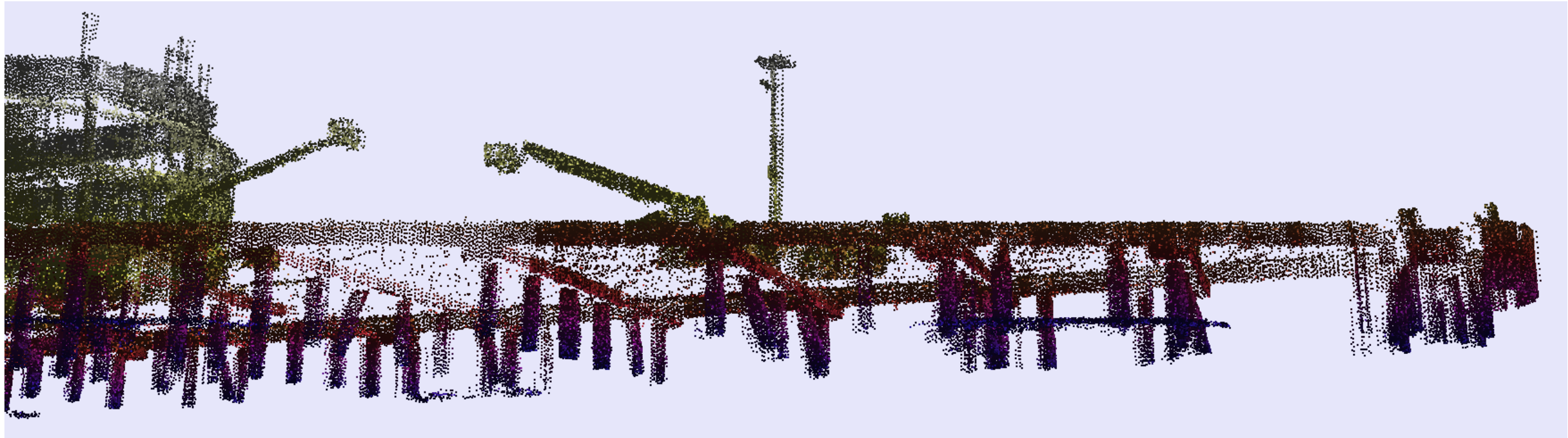
Multi-Beam Echo Sounder Data Only (Canada Place)



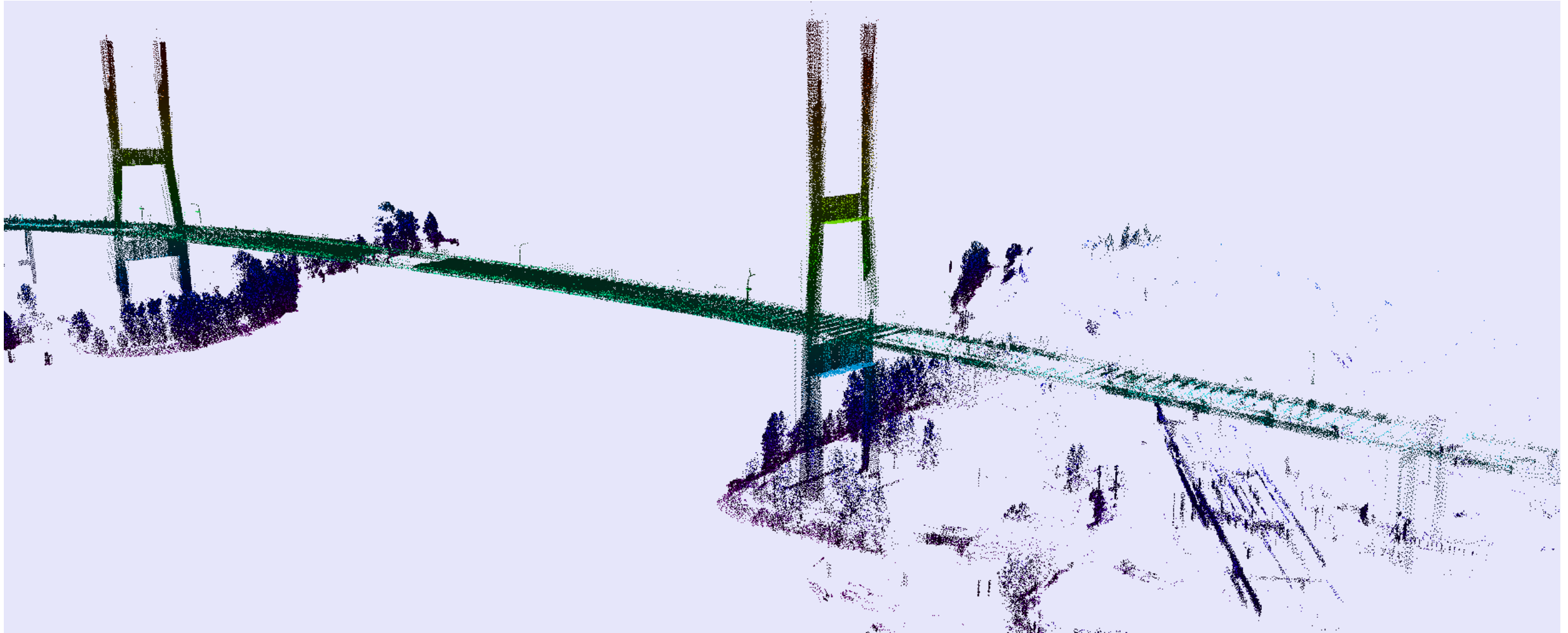
Integration of MBES & Scanner (Canada Place)



Scanner Data Only with Underside of Decking (Canada Place Close-up)



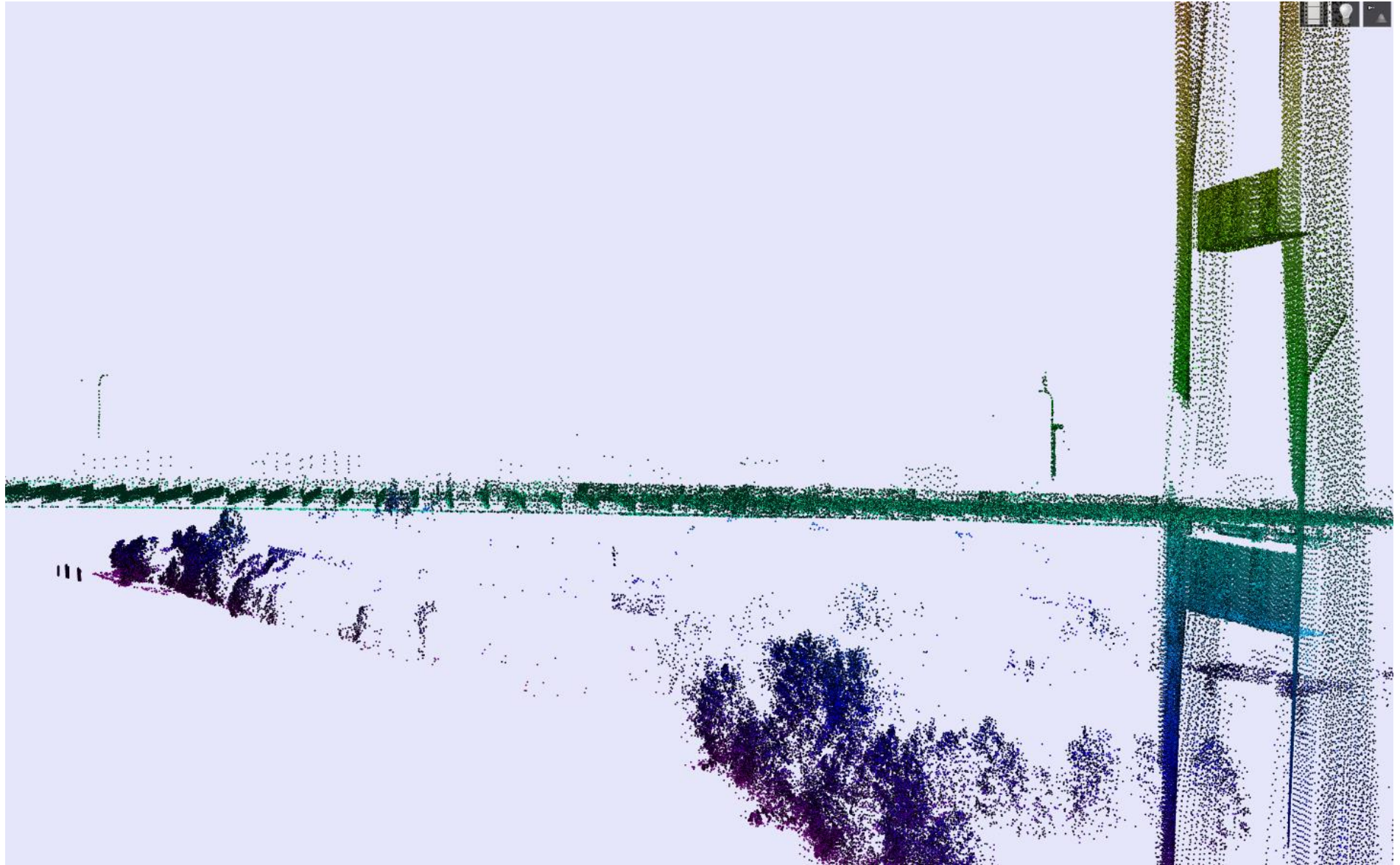
Scanner Data at the Alex Fraser Bridge



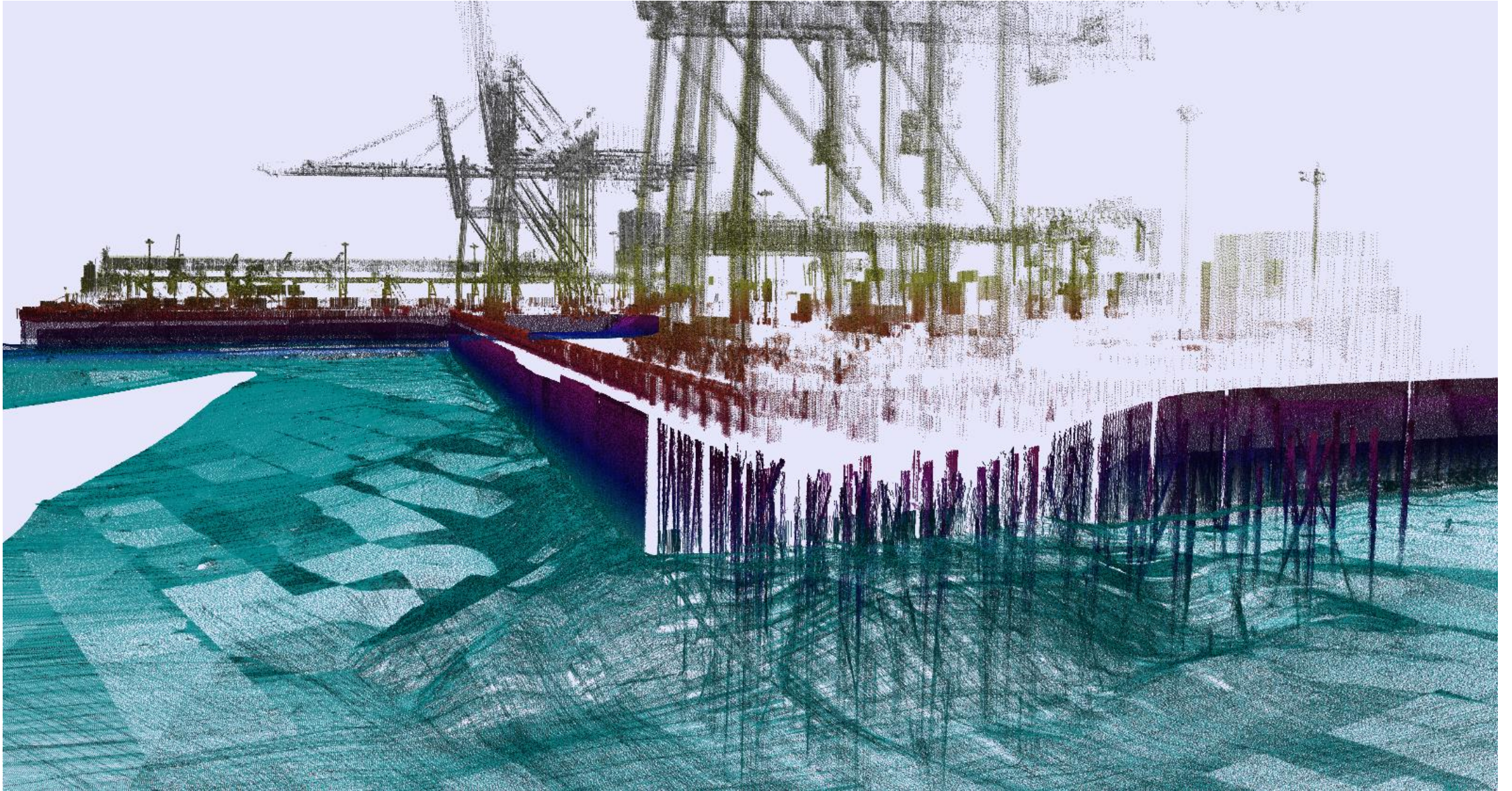
Scanner Data at the Alex Fraser Bridge (Artifacts)



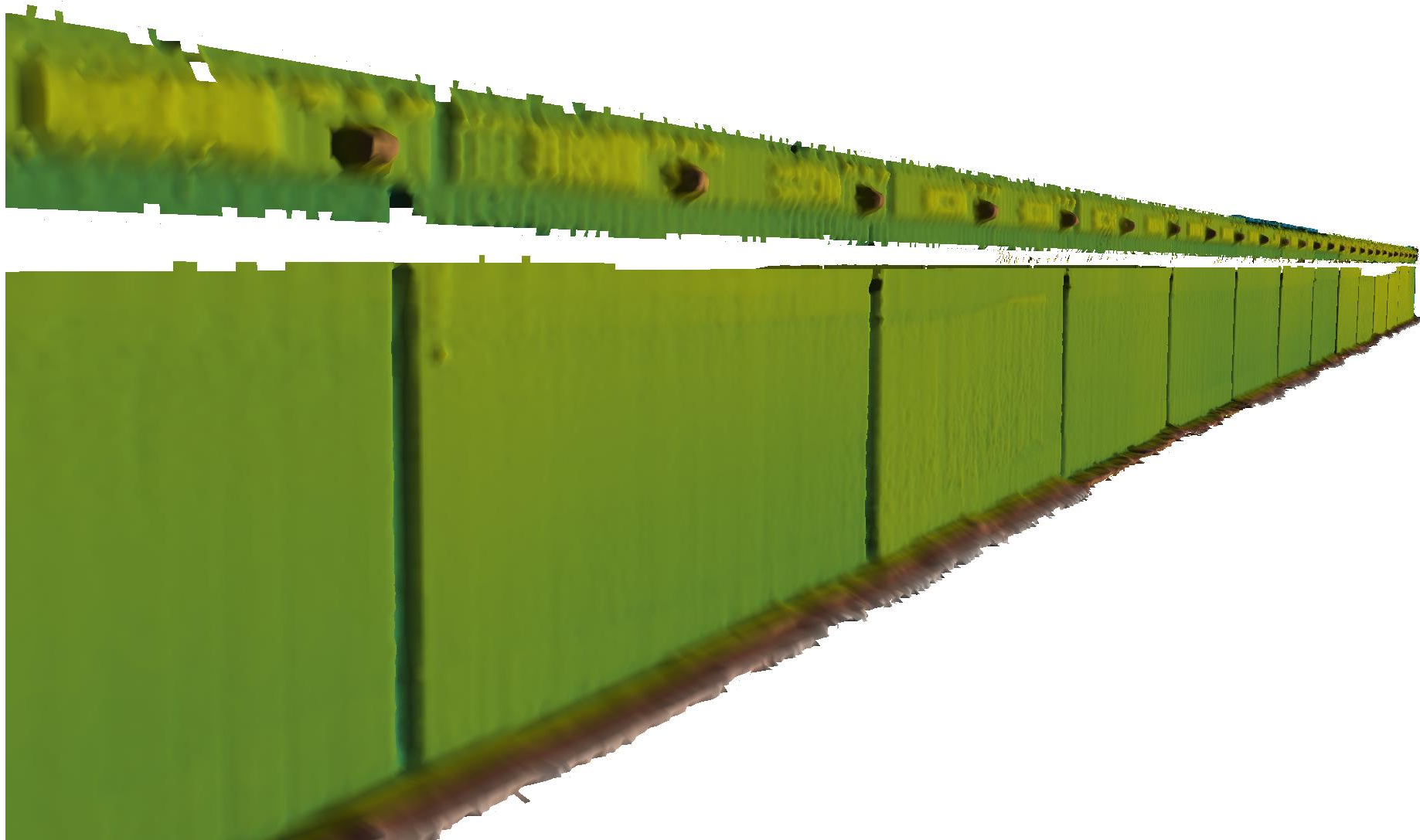
Scanner Data at the Alex Fraser Bridge (Calm Conditions)



VanTerm Multi-Beam & Scanner Data (Vancouver Harbour)



VanTerm Vertical Surface (Vancouver Harbour)



CHC-NSC 2018

www.chc-nsc2018.ca

Victoria, B.C.
March 26-29, 2018

Victoria, C.B.
26 au 29 mars 2018



Land and Sea Shaping the World
Terre et Mer Façonnant le Monde

*Port Terminal Facility Surveys with Multi-beam
and Vessel Mounted Terrestrial Scanner*

Yes, TED Talked