

**Connected for Health - telehealth in
Denmark**

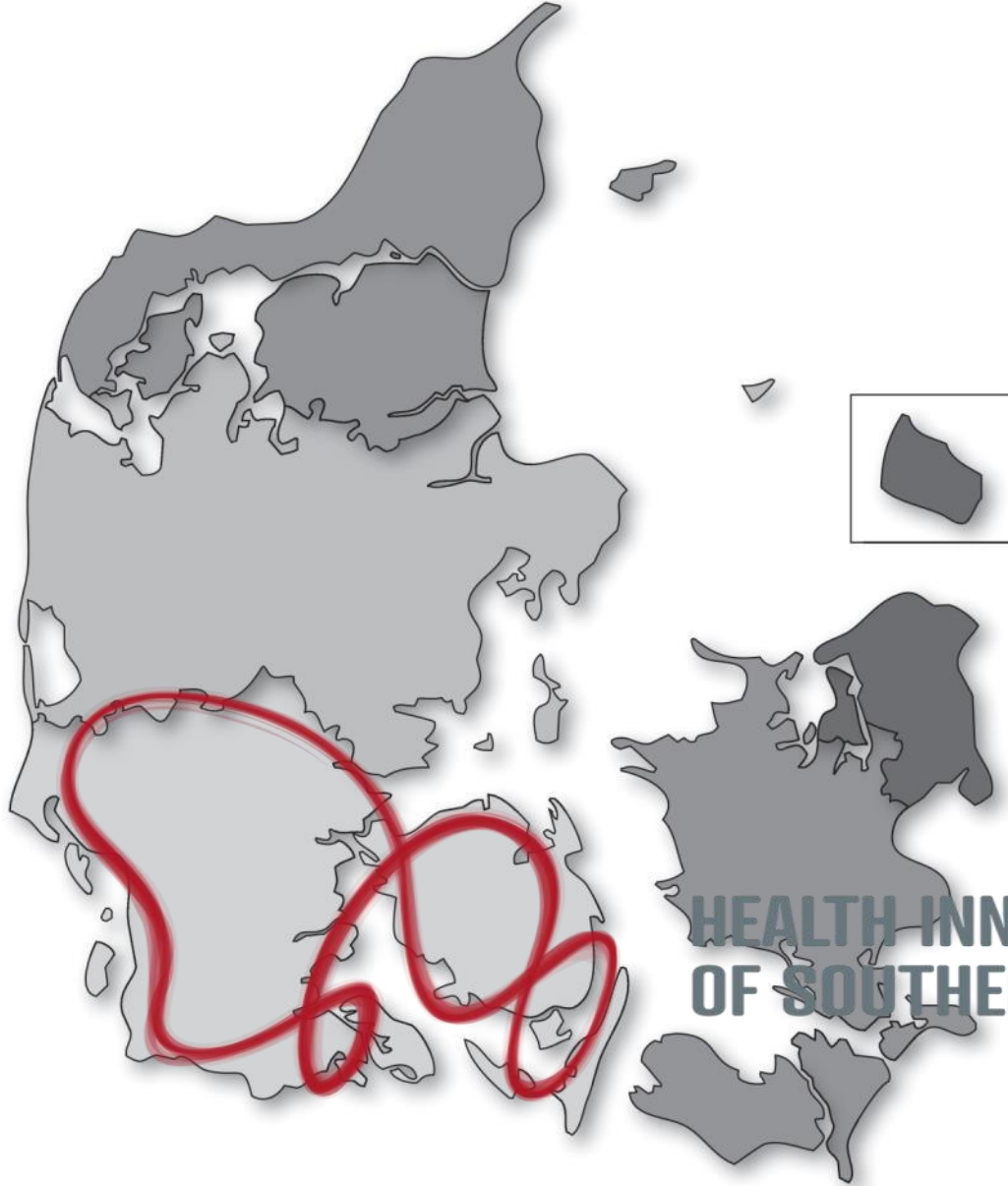
Katrine Vedel

Special Adviser



**SYDDANSK
SUNDHEDSINNOVATION**

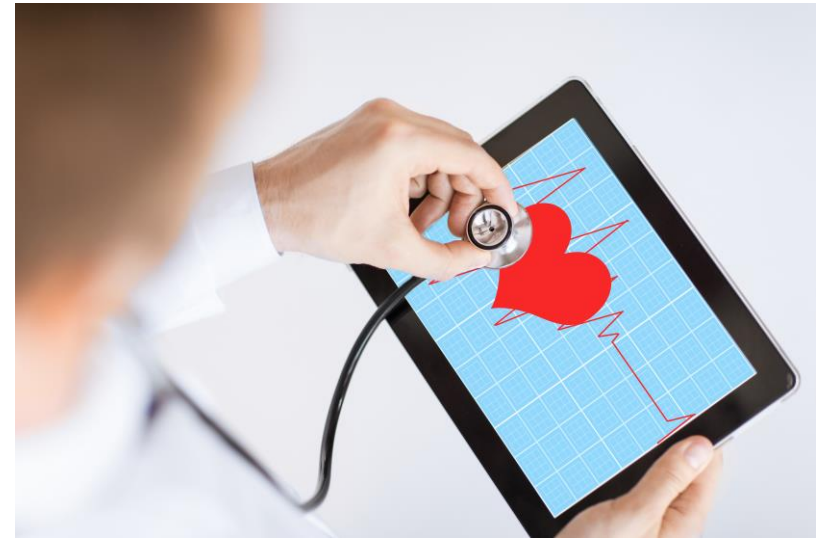




**HEALTH INNOVATION CENTRE
OF SOUTHERN DENMARK**



- Digitalisation strategies
- Referential architecture for collecting and sharing data and images
- National standards
- Public funding programmes





- Free and equal access to public health- and social care
- Financed by taxes

Regional responsibilities (Region)

Hospital and psychiatric treatment

Primary health care / public health

- General Practitioners
- Private practicing specialists
- Adults dental services



Social care responsibilities (municipality)

- A broad spectrum of social services, including care for dependent elderly, day-care facilities, rehabilitation etc.





Did anyone talk about silos?



CoLab Denmark

Active Living Technology

"CoLab represents the entire health and care sector as one partner to private companies, who want to test and develop their assisted living solutions."

Value for hospitals and municipalities

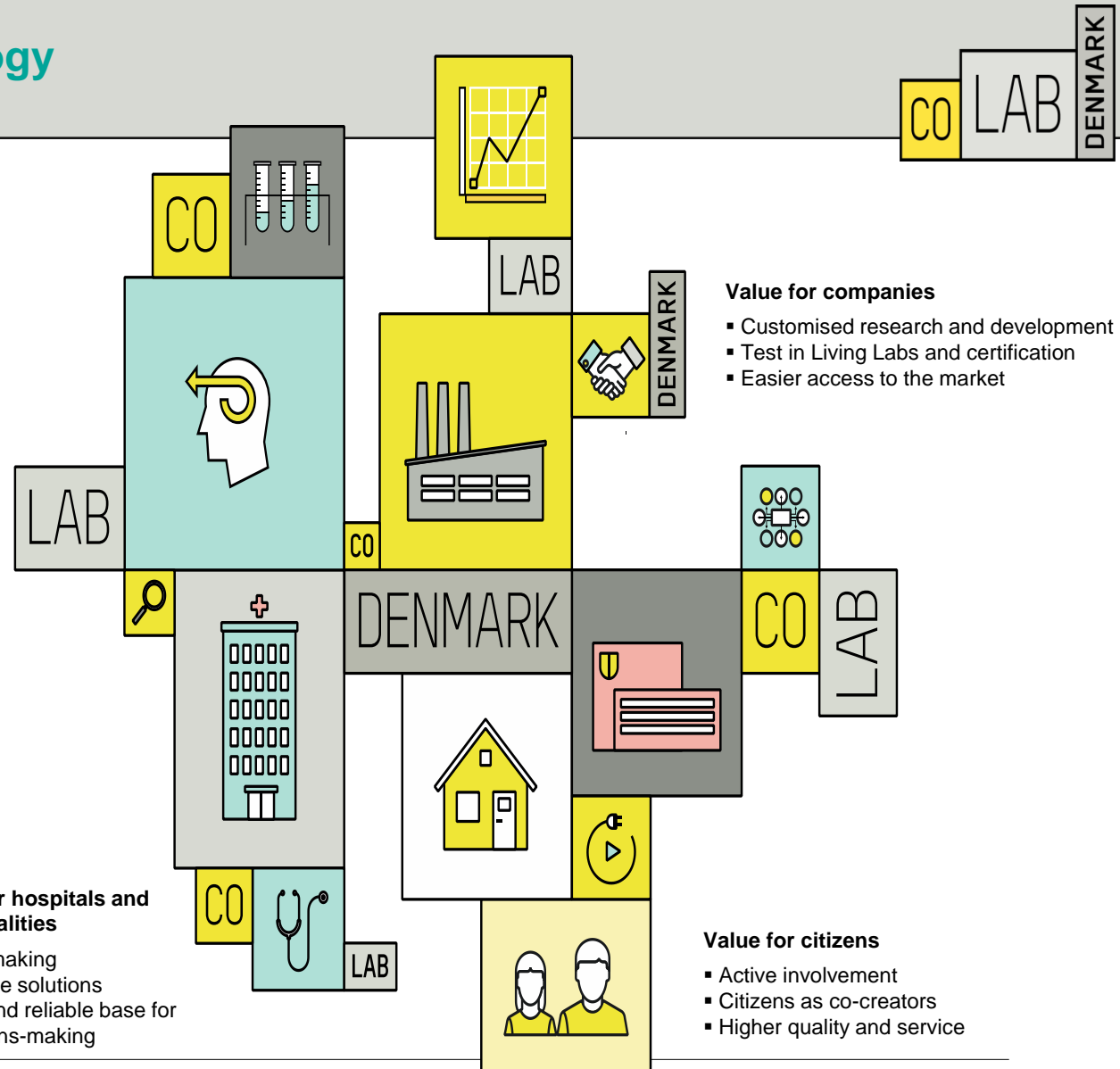
- Matchmaking
- Scalable solutions
- Solid and reliable base for decisions-making

Value for companies

- Customised research and development
- Test in Living Labs and certification
- Easier access to the market

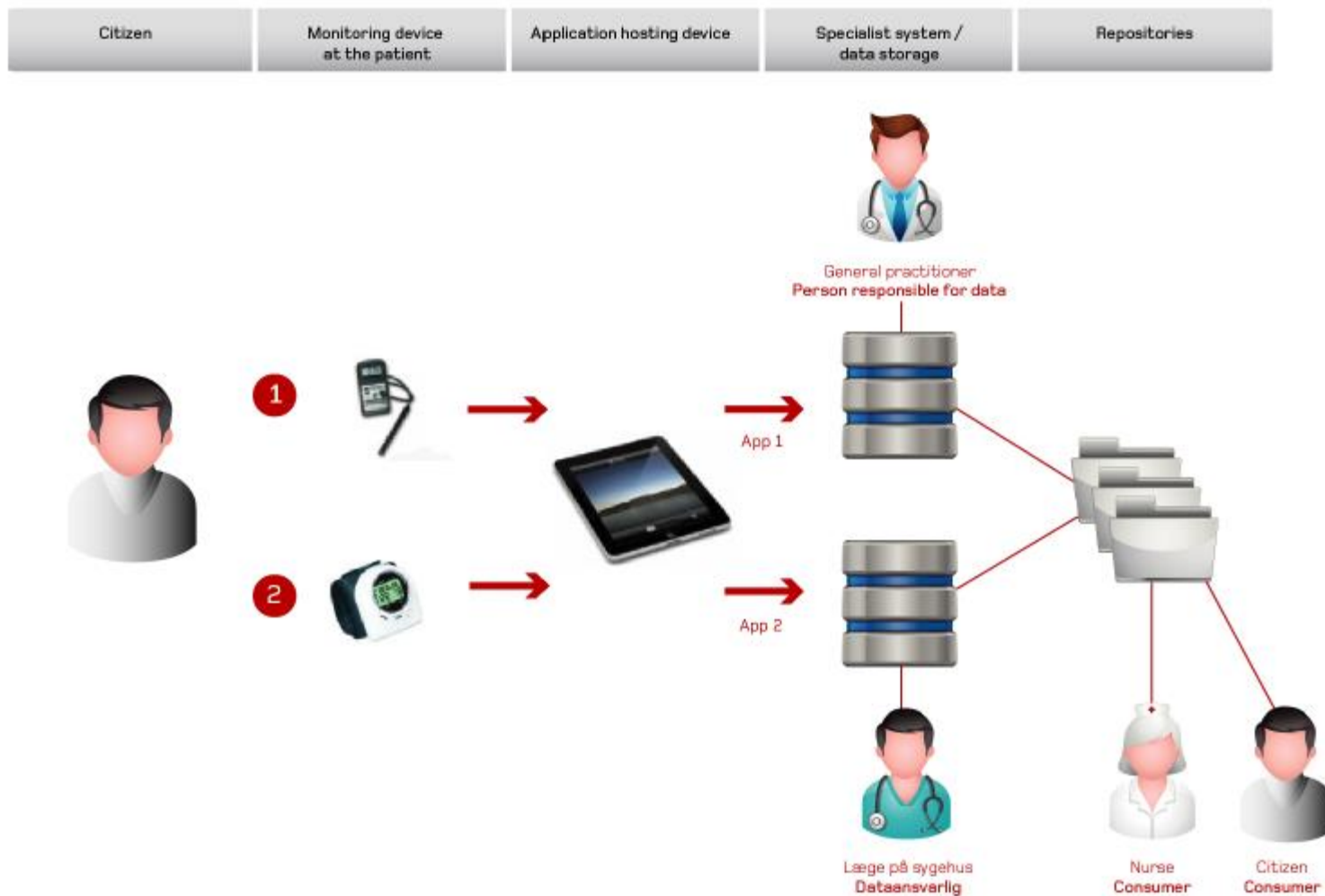
Value for citizens

- Active involvement
- Citizens as co-creators
- Higher quality and service





Same language, different systems – as seen in the national Danish referential architecture for collecting health data from citizens





Test facility and lab: Colab Plug'n'play





Connected for health – International collaboration

- Explore, identify and test eHealth solutions
- Explore the prerequisites for e-health (FTTH)
- Partners from Finland, Sweden, Denmark and Czech Republic. Lead partner: Regional Council of South Ostrobothnia in Finland





- There are no signs of strong and immediate differences between users using FTTH and mobile network. In one case however, poor network connectivity has caused difficulties.
- In general patients said they felt safe and empowered by the technology. They expressed a very limited need for support, despite the fact that the pilot included users with limited IT experience.





Thank you for your attention

Katrine.vedel@rsyd.dk

**[http://www.syddansksundhedsinnovation.
dk/service-menu/english.aspx](http://www.syddansksundhedsinnovation.dk/service-menu/english.aspx)**



More information in English

- The Region of Southern Denmark
<http://www.regionsyddanmark.dk/wm228983>
- Health Innovation Centre of Southern Denmark:
www.syddansksundhedsinnovation.dk
- The National Board of Health
<https://sundhedsstyrelsen.dk/en>
- Colab Denmark
<http://com.colab-denmark.dk/>
- Connected for Health project
http://www.epliiitto.fi/connectedforhealth_en
- The Ministry of Health
<http://www.sum.dk/English.aspx>