



State of Connecticut

SBiR 2010 NATIONAL CONFERENCE

PARTNER FOR PROFIT



Sponsor & Exhibitor Prospectus

April 21 - 23, 2010

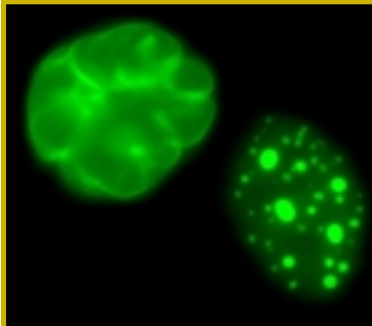


Exhibit Hours

Day 1: 12:00 pm - 6:00 pm

Day 2: 8:00 am - 6:00 pm

Day 3: 8:30 am - 12:00 pm



Connecticut Convention Center - Hartford, CT

www.SBIRnational.com * info@SBIRnational.com * sponsor@SBIRnational.com *

860-257-2893 * **860-257-2894** * **860-257-2895** *

Sponsorship Opportunity Levels

	Platinum	Gold	Silver	Bronze	Copper
Sponsorship*	\$25,000	\$15,000	\$10,000	\$5,000	\$2,500
Transferable** Attendee Passes	8	6	5	4	2
Booth Size	10' x 20'	10' x 15'	10' x 10'	10' x 10'	10' x 10'
Booth Location	Foyer	Foyer	Foyer	Exhibit Hall	Exhibit Hall
Sponsor Ribbon on Badge	✓	✓	✓	✓	✓
Company Logo in Conference Program	✓	✓	✓	✓	✓
Company Name in Conference Program	✓	✓	✓	✓	✓
Attendee List	✓	✓	✓	✓	✓
Material Placed in Conference Tote	✓	✓	✓	✓	
Conference Website Link	✓	✓	✓	✓	
Podium Signage Recognition	✓	✓			
Company Logo in Promo Materials	✓	✓			
Banner Hung if Provided	✓	✓			
Company Name on Inside Convention Center Displays	✓	✓			
Company Name on Outside Convention Center Marquis	✓				
Company Name Mentioned in Press Releases	✓				
Company Logo on Emails	✓				
Logo and Name on Padfolio	✓				

Featured Sponsors: The \$25,000 - \$10,000 booths will be prominently displayed, receiving the most visibility - in the foyer. All exhibits will remain on display for the full duration of the event. Breakdown will be done only after the conference ends.

Attendee Price: Additional registrations are \$395 each. After March 31, 2010, the price increases to \$495 for all. Registrations ARE TRANSFERABLE within your organization. Meals are included.

* **Sponsorships for Non-Profit Groups** are priced at 60% of the levels indicated. No further discounts for exhibitors

** Attendee Passes are **TRANSFERABLE ONLY** if they are returned each day to the registration desk.

Information is subject to change without notice.