

# ADDRESSING FETAL ALCOHOL SPECTRUM DISORDERS IN WESTERN AUSTRALIA

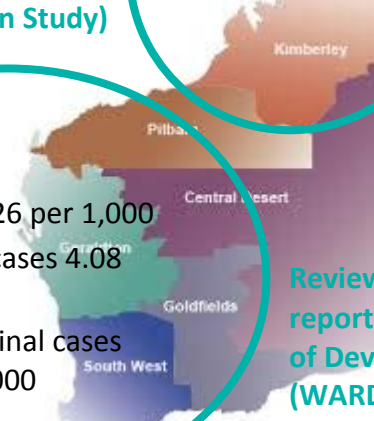
## PREVALENCE

Population-based prevalence study of children born in 2002/2003 in the Fitzroy Valley in the Kimberley (Lililwan Study)

108 assessed  
FAS/pFAS 120  
per 1,000

210 cases  
All cases 0.26 per 1,000  
Aboriginal cases 4.08  
per 1,000  
Non-Aboriginal cases  
0.03 per 1,000

Review of cases of FASD reported to the WA Register of Developmental Anomalies (WARDA) 1980 – 2010

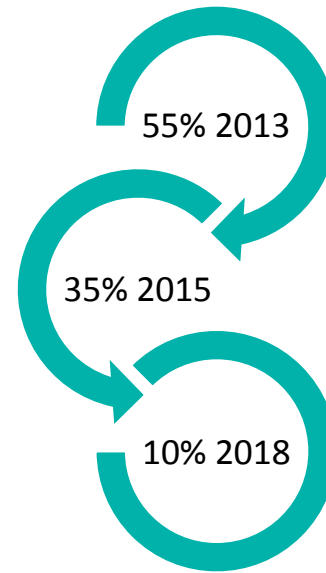


## PREVENTION

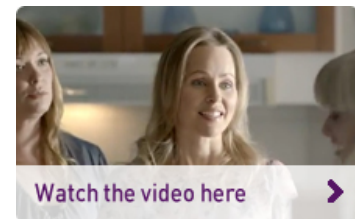
### Kimberley & Pilbara FASD Prevention Strategy



Implement and evaluate a **community designed** FASD prevention strategy to reduce alcohol consumption in pregnancy to 'Make FASD History'



### Mass Media - television advertisements



## DIAGNOSIS

### FASD diagnostic instrument for Australia

Pilot, implementation & training

### Banksia Hill FASD Study

How common in juvenile detention  
Development of screening tool

### FASD Clinical Network

Linking clinicians across WA

## MANAGEMENT/THERAPY

### National Disability Insurance Agency

Develop a functional severity index  
Assist planners re level & type of services & supports  
workforce requirements

### Banksia Hill FASD Study

Management strategies for young people  
Workforce training for DCS staff & training academy

### Alert Program®

Randomised controlled trial - school based therapeutic model for children with neurodevelopment impairments

### FASD Resources for justice professionals

Website  
Videos  
On-line CPD module for lawyers  
FASD information for Bench Book

### Ask, Assess and record, Advise, Assist, Arrange



### Use of AUDIT-C

To assess the acceptability and effectiveness of the AUDIT-C instrument and the training resources with midwives delivering the intervention, and, the acceptability of the AUDIT-C instrument among pregnant women receiving the intervention



### Breastfeeding

Evaluating the awareness and utilisation of the NHMRC alcohol and breastfeeding guideline (2009) by health professionals and breastfeeding women.



## ALCOHOL, PREGNANCY & FASD RESEARCH PROGRAM

Contact us via email [fasd@telethonkids.org.au](mailto:fasd@telethonkids.org.au) or phone +61 8 9489 7724

Visit our website: <http://alcoholpregnancy.telethonkids.org.au/>



We acknowledge our funders and partner organisations, government departments and communities for their collaboration, advice and guidance.