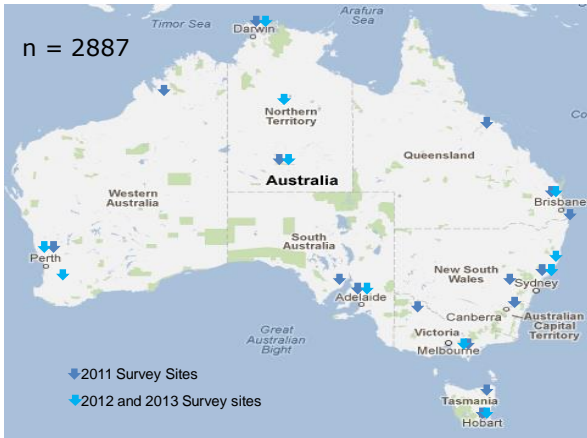
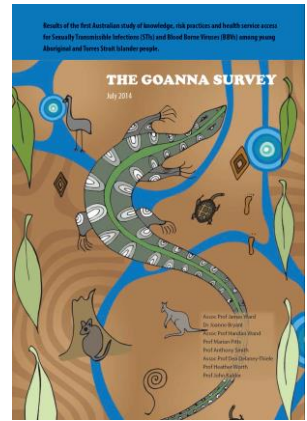




- National cross sectional survey of 2,877 Aboriginal and Torres Strait Islander people aged 16-29 years
- Assessed knowledge, risk factors and health service access for STIs and BBVs
- 40 Aboriginal and Torres Strait Islander community events between 2011-2013
- Collaboration involving every jurisdiction health Departments and ACCHS orgs



## Who participated?

- Total 2877 participants
- Female 60%, Male 40%, <1% trans
- Median age 21
  - 43% 16-19 years, 31% 20-24 years
  - 25% 25-29 years
- Aboriginal 88%, TSI 5%, Both 7%
- Single 58%
- Heterosexual 91%
- 45% Education higher than Year10
- urban 45%, regional 41%, remote 14%
- 57% single at the time of the survey
- 57% females and 63% males had no children
- 11% males incarcerated and 4% females



## Knowledge about STIs and BBV

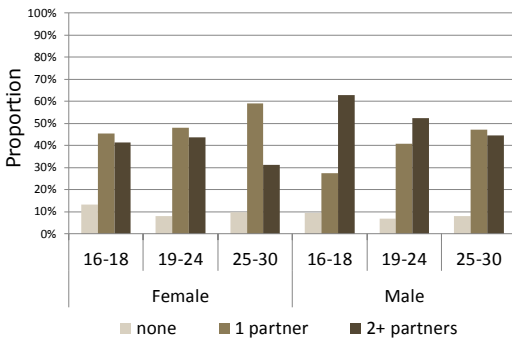
Table 4-3: Participants knowledge score of BBVs and STIs questions by gender and age group

	TOTAL	GENDER*		AGE GROUP		
	n (%)	Male n (%)	Female n (%)	16-19 n (%)	20-24 n (%)	25-29 n (%)
	2877	1132	1705	1265	897	715
<b>KNOWLEDGE SCORE*</b>						
1 <sup>st</sup> tertile (score 0-8)	868 (31)	404 (37)	464 (28)	497 (41)	252 (29)	124 (18)
2 <sup>nd</sup> tertile (score 9-10)	937 (34)	370 (34)	567 (34)	403 (33)	280 (32)	256 (36)
	n (%)	Urban n (%)	Regional n (%)	Remote n (%)		
	2877	1460	1023	244		
<b>KNOWLEDGE SCORE*</b>						
1 <sup>st</sup> tertile (score 0-8)	873 (31)	414 (29)	312 (31)	102 (46)		
2 <sup>nd</sup> tertile (score 9-10)	939 (34)	481 (33)	364 (36)	63 (28)		
3 <sup>rd</sup> tertile (score 11-12)	969 (35)	555 (38)	335 (33)	57 (26)		

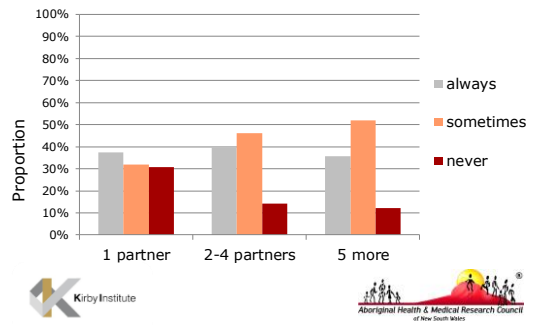
## Sexual Activity

	GENDER*			AGE GROUP		
	Total n (%)	Male n (%)	Female n (%)	16-19 n (%)	20-24 n (%)	25-29 n (%)
	2877	1132	1705	1265	897	715
<b>EVER HAD SEXUAL INTERCOURSE (VAGINAL OR ANAL)</b>						
Yes	2320 (81)	919 (81)	1381 (81)	871 (69)	783 (87)	666 (93)
<b>OF THOSE WHO HAVE EVER HAD SEX (n=2320), NUMBER OF PARTNERS IN LAST YEAR</b>						
None	191 (8)	62 (7)	126 (9)	78 (9)	55 (7)	58 (9)
One	1075 (46)	364 (40)	709 (51)	346 (40)	366 (47)	363 (55)
2-4 people	869 (38)	376 (41)	489 (35)	367 (42)	292 (38)	210 (32)
<b>AGE OF LAST PARTNER</b>						
<16 years	69 (3)	46 (5)	23 (2)	61 (8)	6 (1)	2 (<1)
16-17	337 (16)	195 (23)	138 (11)	313 (40)	16 (2)	8 (1)
18-19	395 (19)	184 (21)	208 (17)	265 (34)	111 (15)	19 (3)
20-24	860 (41)	313 (37)	546 (44)	130 (16)	487 (67)	243 (41)
25-29	246 (12)	76 (9)	170 (14)	11 (1)	61 (8)	174 (29)
30 or older	192 (9)	34 (4)	158 (13)	7 (1)	37 (5)	148 (25)

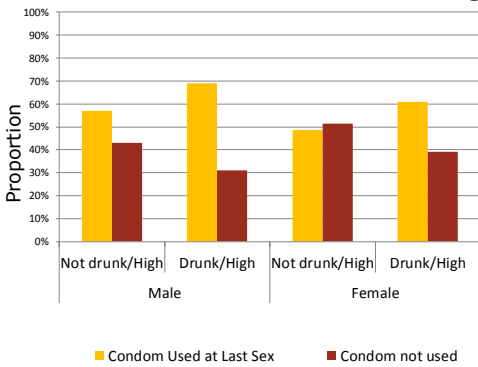
### Sexual partners in the last year



### Condom Use and Partners



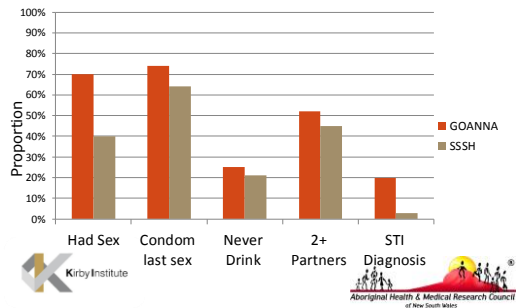
### Condom Use, Alcohol and Drugs



### Risk Behaviours

Comparing Goanna & School Students Sexual Health Survey

16-18 year olds



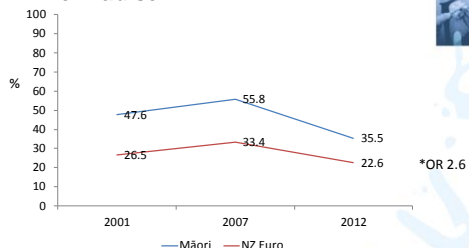
### Youth2000 series sample characteristics

	2001		2007		2012	
<b>Schools</b>	114 (86% response)		96 (84% response)		91 (73% response)	
<b>Decile</b>	n	%	n	%	n	%
low	26	22.9	15	16.3	26	28.6
med	49	43.1	52	56.5	36	39.6
high	39	34.2	25	27.2	29	31.9
<b>Students</b>	9,567 (73% response)		9,107 (74% response)		8,500 (68% response)	
<b>Gender</b>	n	%	n	%	n	%
Male	4,414	46.1	4,911	54.0	3,874	45.6
Female	5,152	53.9	4,187	46.0	4,623	54.4
<b>Ethnicity</b>	n	%	n	%	n	%
* Māori	2,325	24.7%	1,702	18.7%	1,701	20.0%
Pacific	768	8.2%	1,178	10.2%	1,201	14.1%
Asian	679	7.2%	1,310	12.4%	1,051	12.4%
NZ Euro	5,219	55.4%	6,871	52.8%	4,024	47.7%
Other	417	4.4%	817	5.8%	511	6.0%
<b>&gt;1 ethnic groups</b>	29%		39%		42%	

Adolescent Health Research Group [www.youthresearch.auckland.ac.nz](http://www.youthresearch.auckland.ac.nz)



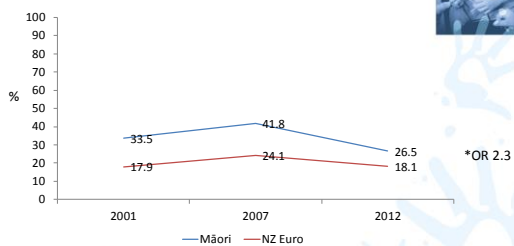
### Maori: Ever had sex



Adolescent Health Research Group [www.youthresearch.auckland.ac.nz](http://www.youthresearch.auckland.ac.nz)



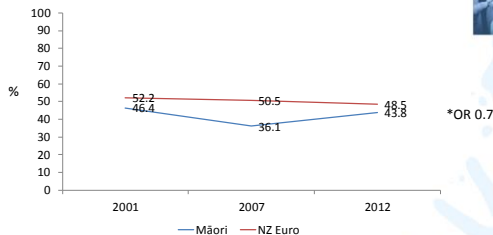
### Maori: Currently sexually active



Adolescent Health Research Group [www.youthresearch.auckland.ac.nz](http://www.youthresearch.auckland.ac.nz)



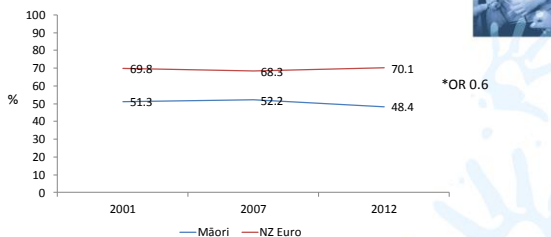
### Maori: Use condoms consistently



Adolescent Health Research Group [www.youthresearch.auckland.ac.nz](http://www.youthresearch.auckland.ac.nz)



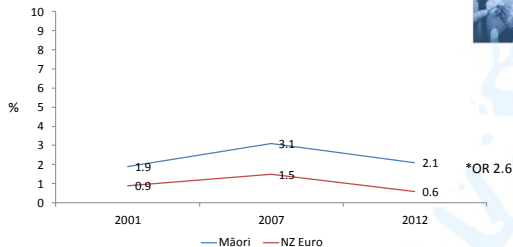
### Maori: Use contraception consistently



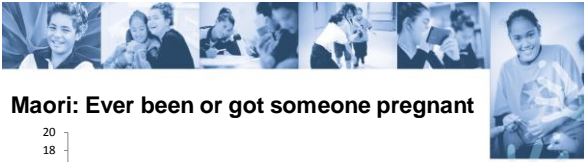
Adolescent Health Research Group [www.youthresearch.auckland.ac.nz](http://www.youthresearch.auckland.ac.nz)



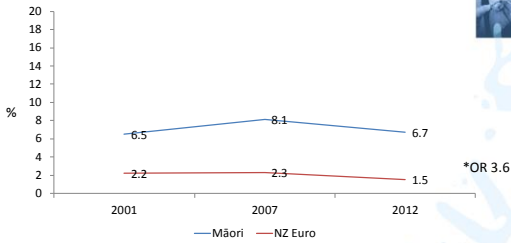
### Maori: Ever had an STI



Adolescent Health Research Group [www.youthresearch.auckland.ac.nz](http://www.youthresearch.auckland.ac.nz)



### Maori: Ever been or got someone pregnant



Adolescent Health Research Group

[www.youthresearch.auckland.ac.nz](http://www.youthresearch.auckland.ac.nz)



### Maori: Unable to get healthcare when required

- 21.9% were unable to get the healthcare they needed in the previous 12 months
- Māori were significantly less likely to access healthcare compared to NZE (18.6%) (OR 1.4)
- No change over time in being able to access care



Adolescent Health Research Group

[www.youthresearch.auckland.ac.nz](http://www.youthresearch.auckland.ac.nz)

## Why are there such persistent sexual health inequities for indigenous peoples?

- Complex and multi-factorial – individual, social, structural and historical influences at play
- The social determinants of health (SDH) are the conditions in which people are born, grow, work, live, and age, and the wider set of forces and systems shaping the conditions of daily life. These forces and systems include economic policies and systems, development agendas, social norms, social policies and political systems
- Colonization and Intergenerational Trauma – *“It is the legacy of numerous traumatic events a community experiences over generations and encompasses the psychological and social responses to such events.”* (Evans & Campbell, 2008, p.320)



## Summary

- Indigenous youth self-report sexual health behaviours in NZ and Australia
- Continued health disparities exist for indigenous youth with regard to behaviour and access to care
- Must address the social determinants
- Need for ongoing surveillance and monitoring
  - ability to compare over time to develop appropriate and culturally responsive services and education



More info: Dr Terryann Clark  
[t.clark@auckland.ac.nz](mailto:t.clark@auckland.ac.nz) or  
[www.youthresearch.auckland.ac.nz](http://www.youthresearch.auckland.ac.nz)

