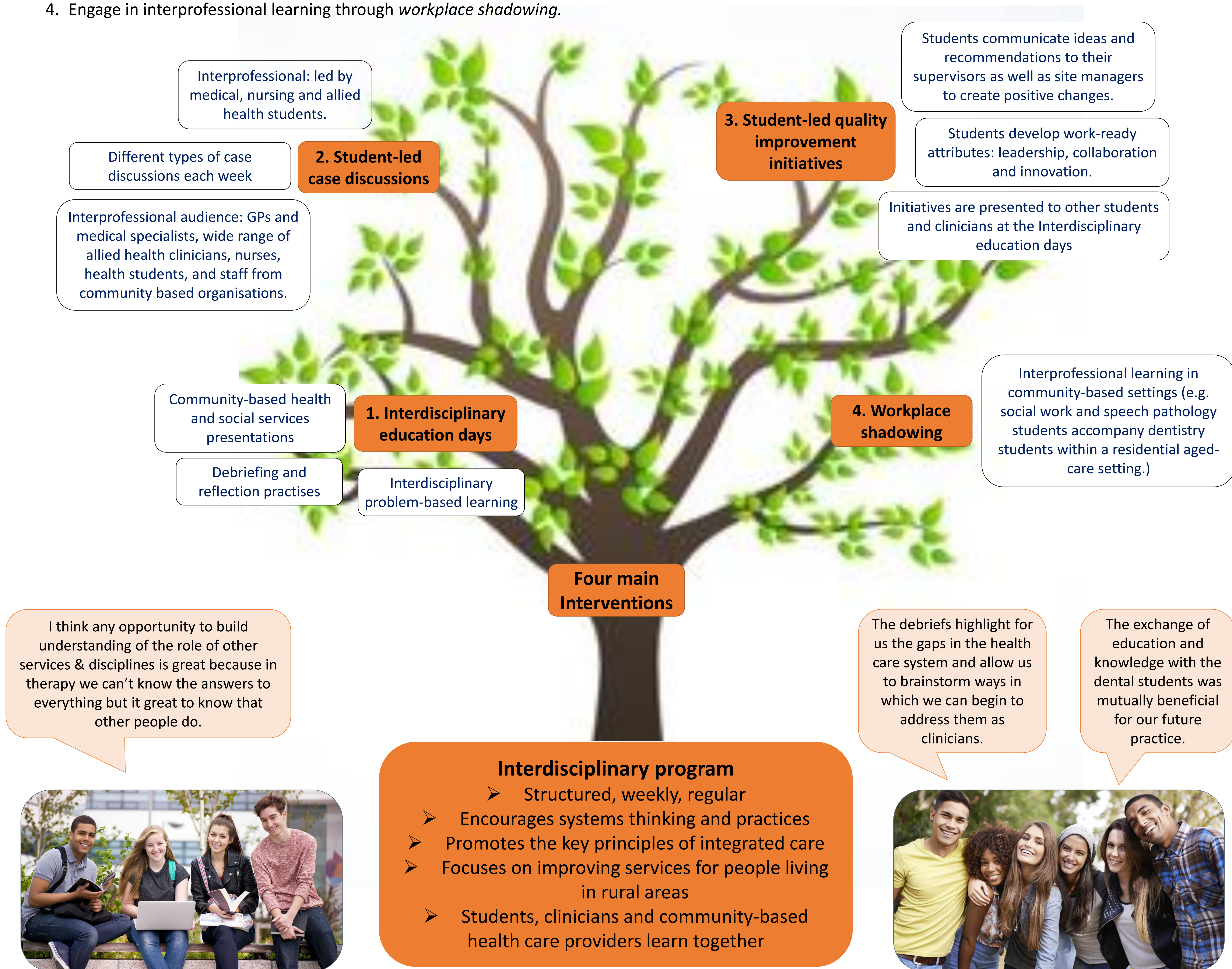


**Introduction** We need to rethink how we train our current and future workforce. Traditional health care training programs are not sufficiently improving the integration of health care services and access to services for the growing number of aging people or those experiencing chronic disease in our population.<sup>1,2,3,4</sup>

**Interventions** The University Centre for Rural Health (UCRH) on the North Coast of NSW has implemented a pedagogical approach where students from a range of disciplines and universities participate in a structured weekly interdisciplinary program so that:

1. Students learn with and from each other, participate in shared decision-making and strategies to address systems change and service redesign through *weekly interdisciplinary education days*.
2. Students learn the principles and practice of patient-centred care through *weekly student-led case discussions*.
3. Students actively identify service gaps, and design and implement quality improvement projects within the community through *student led quality improvement initiatives*.
4. Engage in interprofessional learning through *workplace shadowing*.



**Results** In 2018 the weekly education program occurred across 42 weeks for 1229 students from 15 universities and 13 health disciplines; there were 31 quality improvement student presentations; and 20 case discussions with 651 participants.

Students were successfully grounded in the following **key principles**:

- ✓ People-centred care
- ✓ A culture of shared decision making
- ✓ Interprofessional practice
- ✓ Broader focus on community-based health and social services
- ✓ Coordinated interventions beyond the boundaries of the health care system
- ✓ Innovation and quality improvement
- ✓ Clinical information systems and digital health technology
- ✓ Improved care for people living in rural communities
- ✓ Health promotion, early intervention, and prevention
- ✓ Critical thinking, problem solving
- ✓ Social responsibility, influence, systems change

**Conclusions** There is a growing recognition that we need to transform education and training, targeting the current and future health care workforce to work in new ways.<sup>1,2,5</sup> Health care systems around the world are increasingly shifting towards more integrated models for the delivery of health and social care.<sup>1,2,4,5</sup> The UCRH Interdisciplinary program draws on the local context and population needs, published research findings, literature, health policy and World Health Organisation Strategy publications<sup>1-5</sup> to successfully deliver an interdisciplinary education program and improve services for the local population.

### Contact

**Frances Barraclough** [frances.barraclough@sydney.edu.au](mailto:frances.barraclough@sydney.edu.au)  
Lecturer, Academic Coordinator Interdisciplinary Education  
University Centre for Rural Health, 61 Uralba St Lismore NSW 2480  
Faculty of Medicine and Health, The University of Sydney.

### References

1. Mitchell G. Systematic review of integrated models of health care delivered at the primary-secondary interface: how effective is it and what determines effectiveness? *Aust J Prim Health*. 2015; 21:391-408. doi:10.1071/PY14172.
2. Busetto L, Luijckx K, Calciolari S, González Ortiz LG, Vrijhoef HJ. Exploration of workforce changes in integrated chronic care: Findings from an interactive and emergent research design. *PLoS One*. 2017 Dec 21;12(12):e0187468. doi: 10.1371/journal.pone.0187468. eCollection 2017.
3. Reeves S, Pelone F, Harrison R, Goldman J, Zwarenstein M. Interprofessional collaboration to improve professional practice and healthcare outcomes. *Cochrane Database of Systematic Reviews* 2017, Issue 6. Art. No.: CD000072. DOI: 10.1002/14651858.CD000072.pub3.
4. Amelung, V.E., Stein, V., Goodwin, N., Balicer, R., Nolte, E., Suter, E. 2017. *Handbook of Integrated Care*. Springer International Publishing
5. World Health Organisation. *Framework on integrated, people-centred health services*. Geneva: World Health Organization; 2016.