

I have data...now what?

Connecting the dots with clinical, case mix and financial information

This is Long Term Care Conference, 2016

Connie Paris, Manager CIHI;

Helen Wei-Randall, Program Lead CIHI

Canadian Institute for Health Information

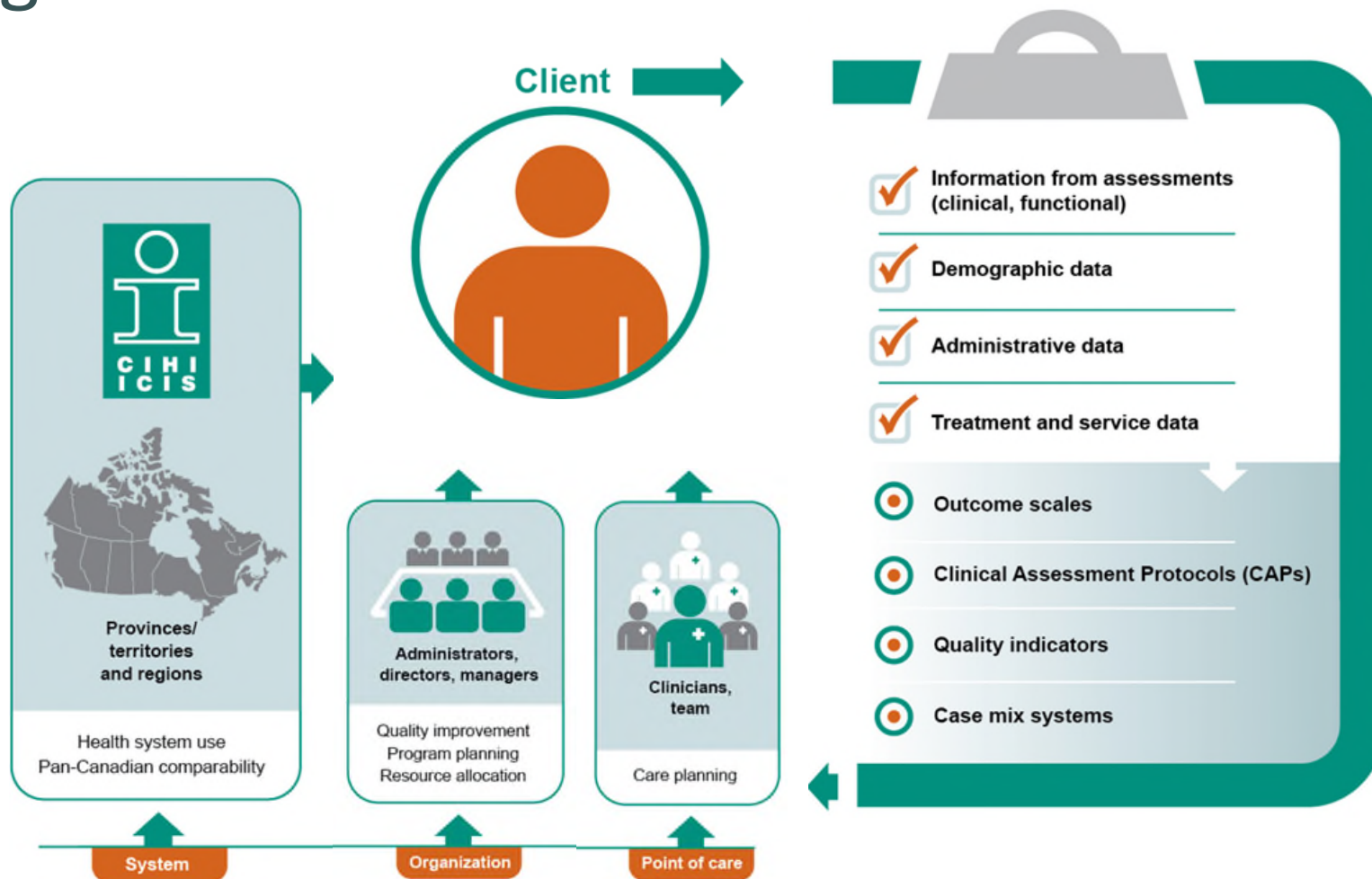


Session Objectives

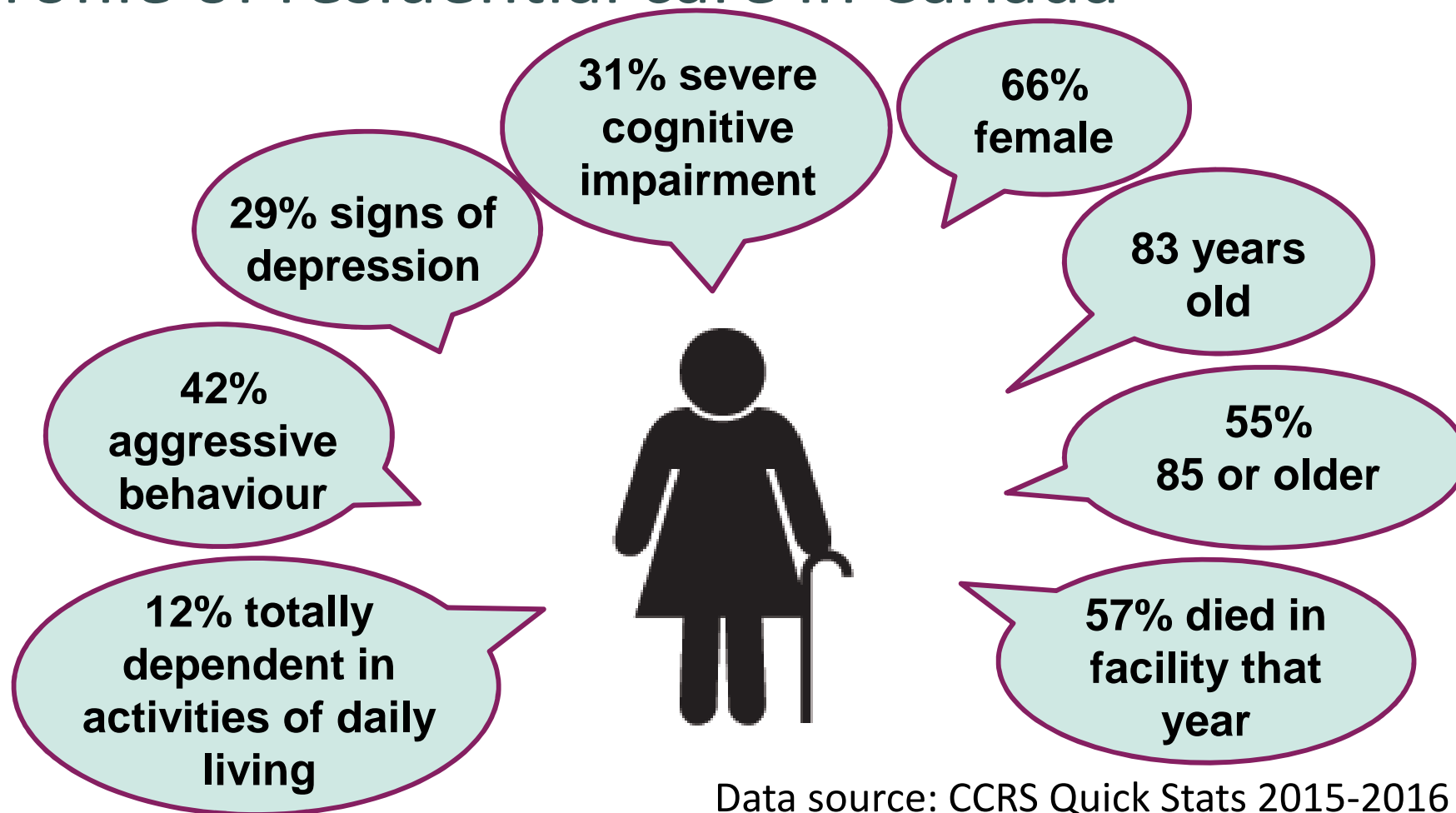
Overview of CIHI Canadian residential care clinical and financial data sources.

Interactive activity on making sense of case mix and cost of a standard resident day

Using interRAI information

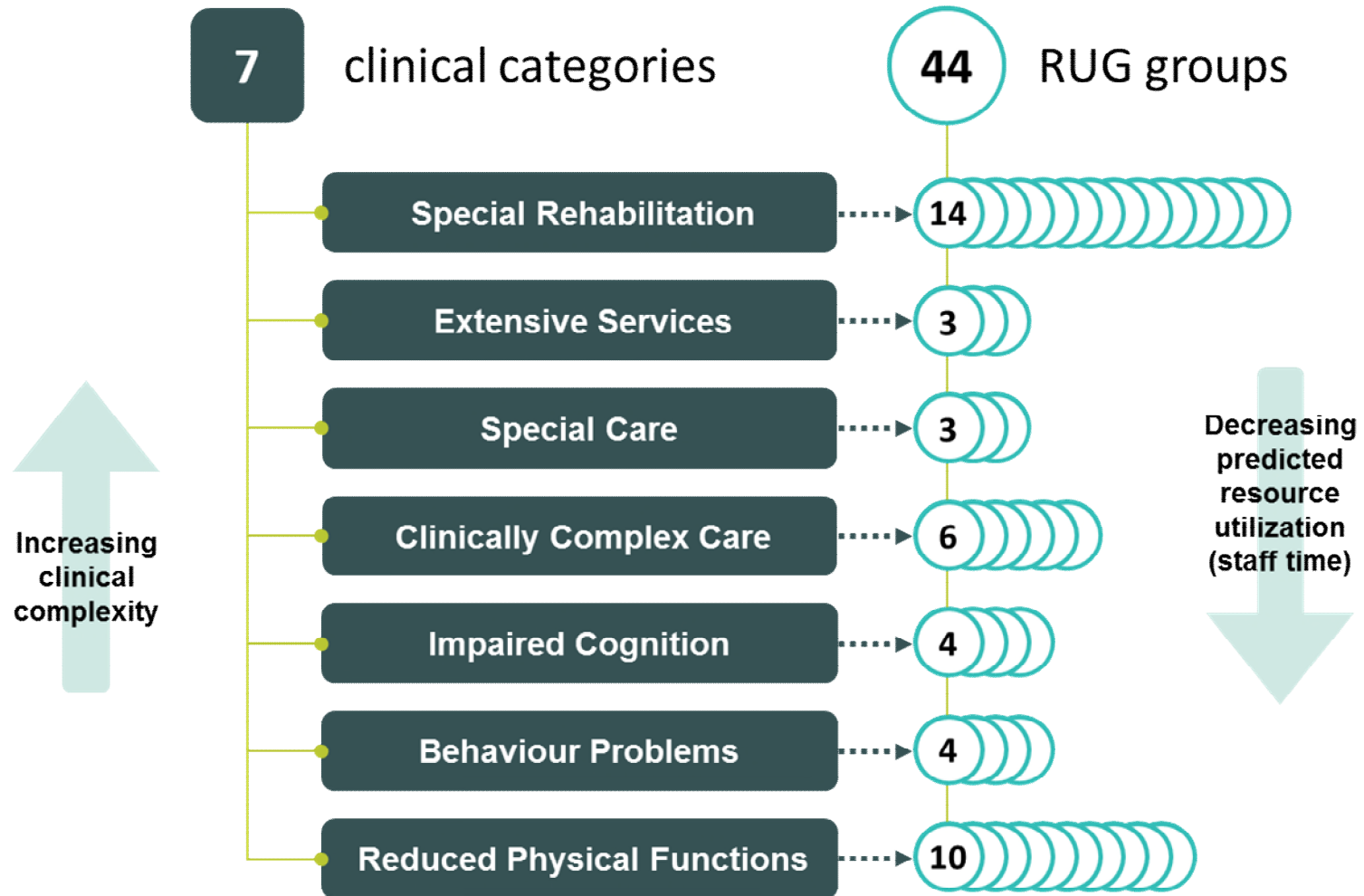


Profile of residential care in Canada



Data source: CCRS Quick Stats 2015-2016

Resource utilization groups version 3 (RUG-III)



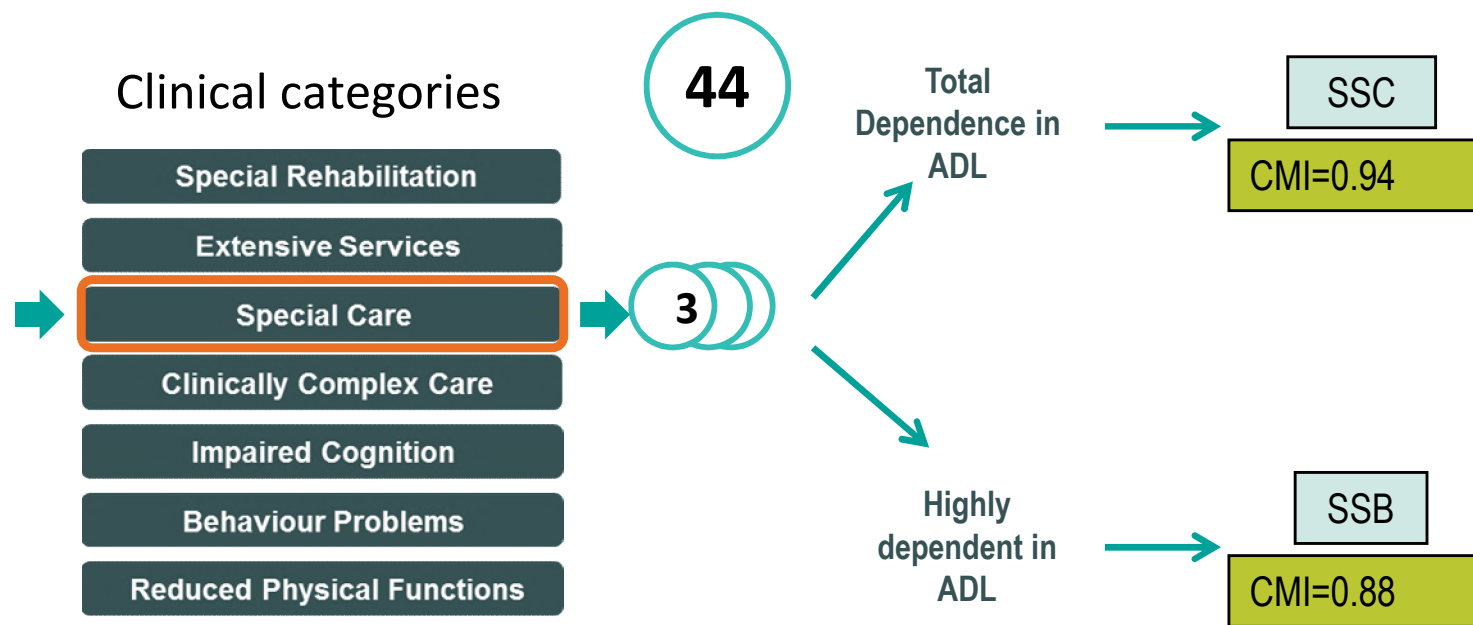
Profile of residential care: case study

Rose

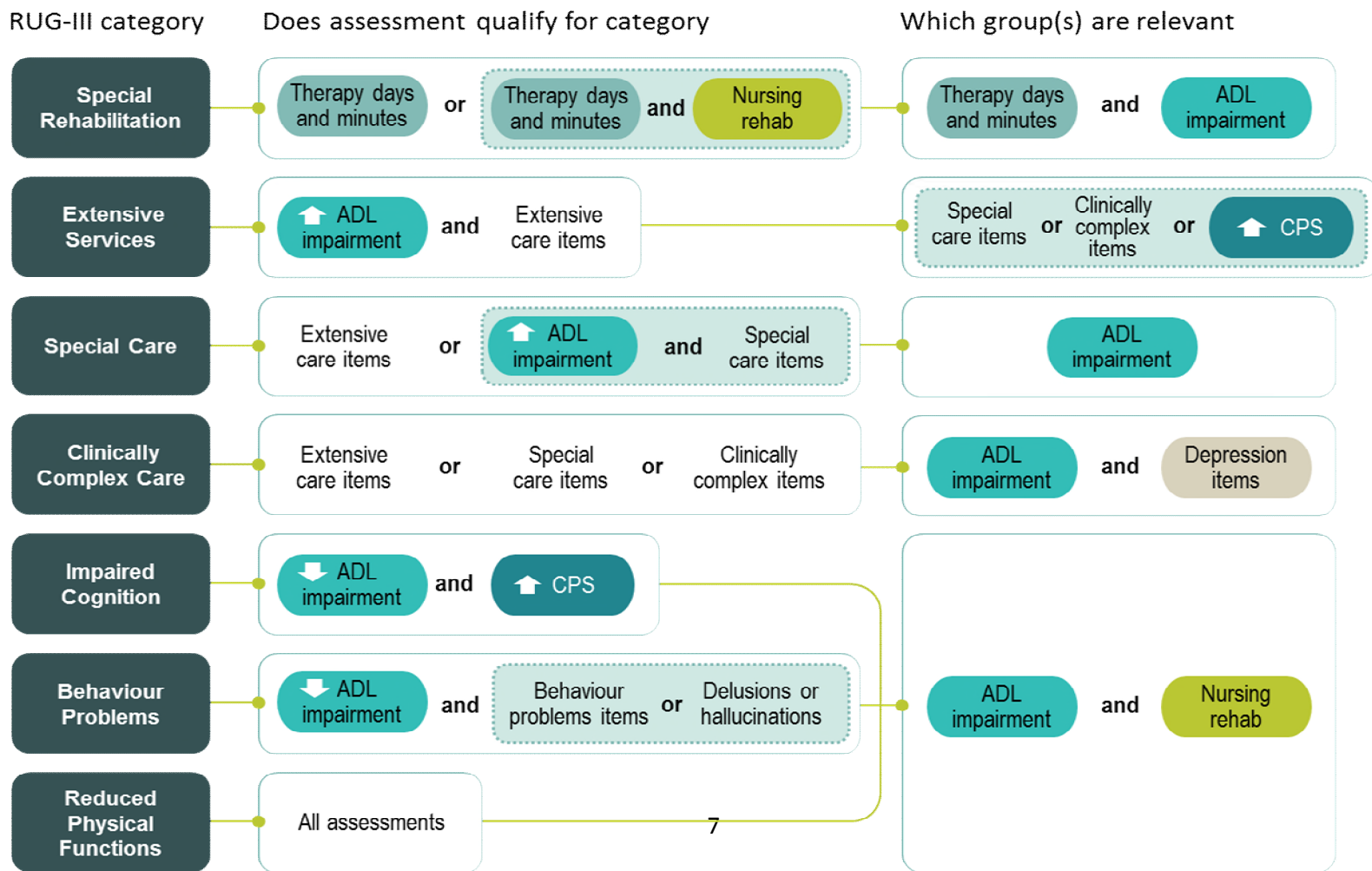


Special Care and moderate to high impairments in ADL

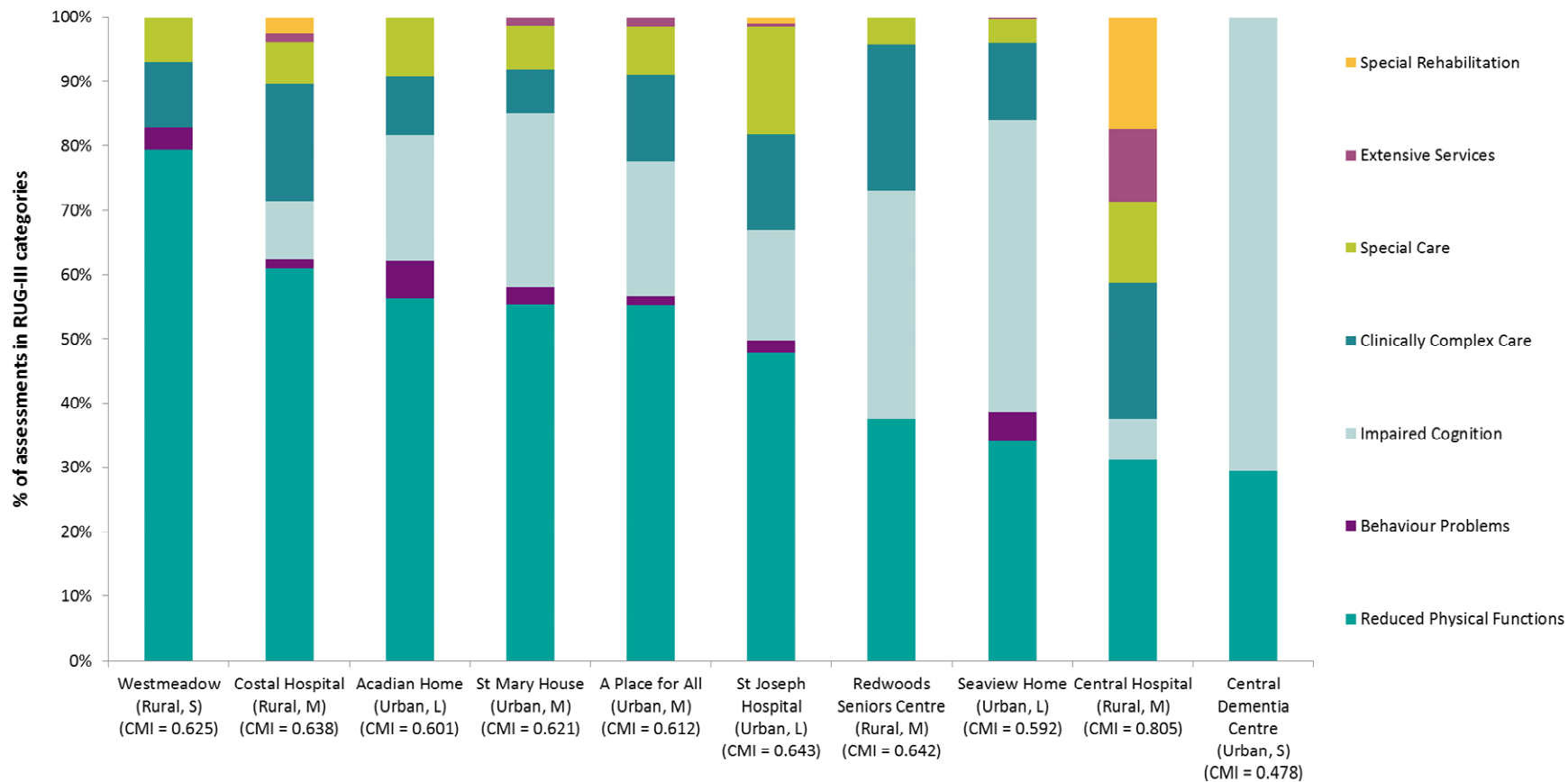
Mary



Summary of RUG-III Grouper



Clinical characteristics of residential care facilities in a deidentified health region



Source: Deidentified CIHI data

Key observations from the activity

- Variation in the clinical complexity of residents
- Variation in Case Mix Index (average resource use)
- Comparison between peers
 - Possible characteristics to identify peers: facility size, urban/rural status, Resource Utilization Groups)

Resources



Case Mix courses:

December 6 and
March 28

Making Sense of Case Mix for Residential
Care

www.cihi.ca/casemix

How much is spent on public funded residential care in Canada?

\$16.4
Billion
(C\$)

Source: Canadian Institute for Health Information. National Health Expenditures Database. Ottawa, ON: CIHI; 2015

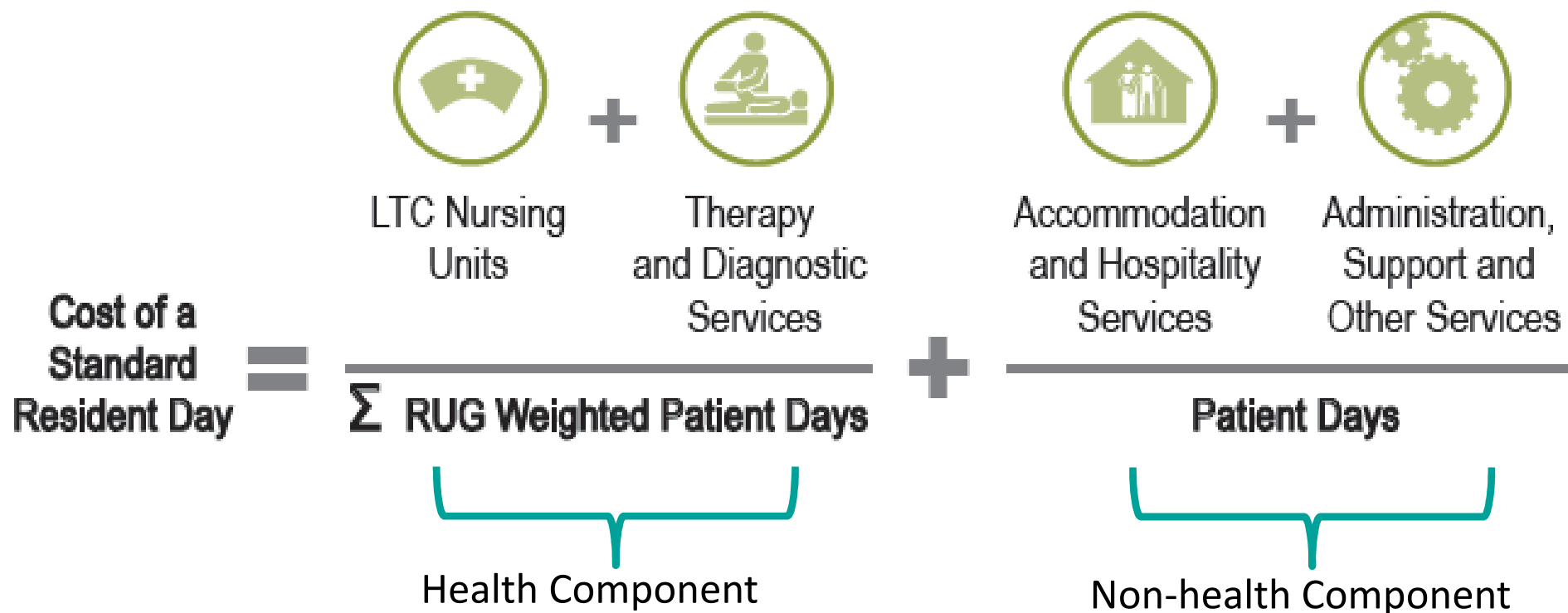
Using your data – Cost of a Standard Resident Day



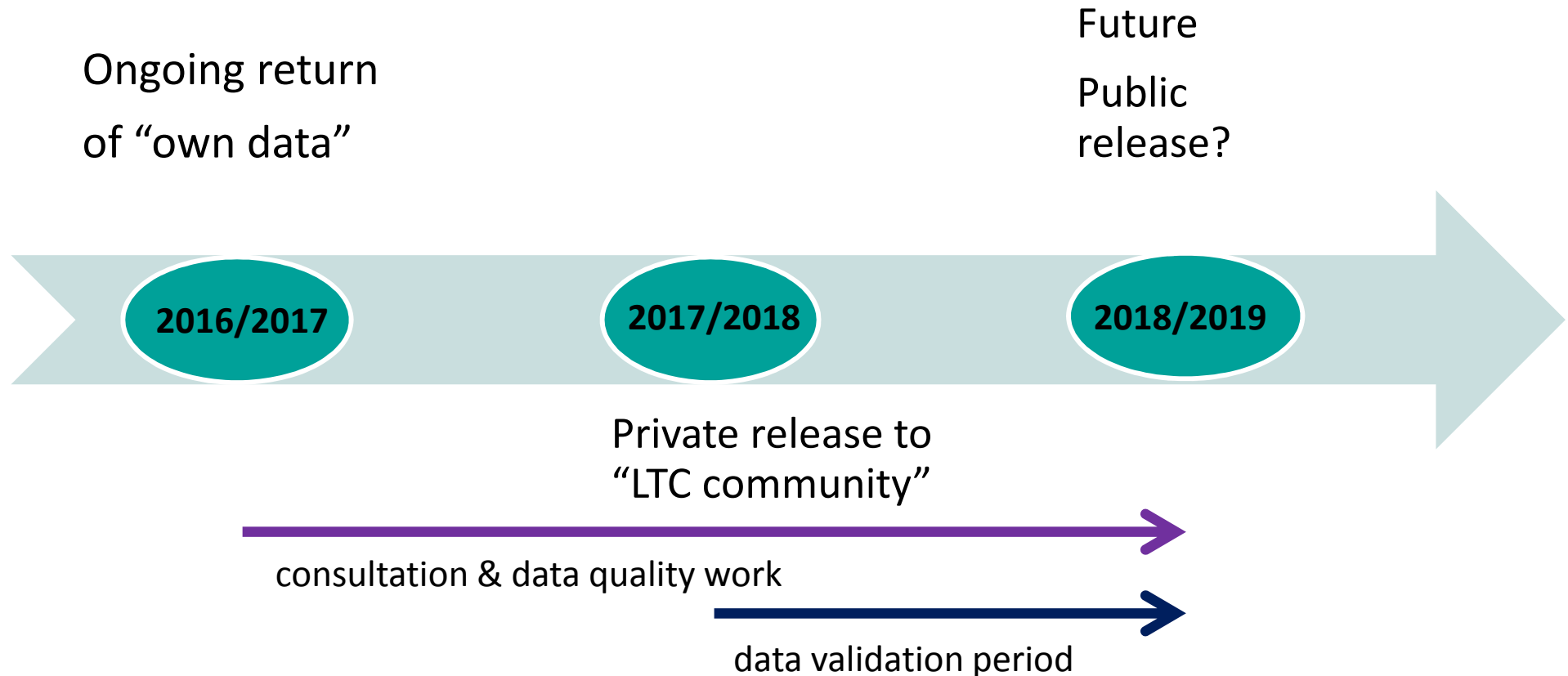
Using your data – Cost of a Standard Resident Day

- Estimate the **cost** of providing LTC services to residents:
 - Planning, budgeting
 - Estimate **variation** in cost for groups of residents with different characteristics
- Compare the cost of providing LTC services to residents, within and with **other jurisdictions**:
 - Identify best practices ultimately leading to **improved quality of care**

Using your data – Cost of a Standard Resident Day



Using your data – Cost of a Standard Resident Day







Canadian Institute for Health Information

Better data. Better decisions. Healthier Canadians.

cihi.ca

ccrs@cihi.ca

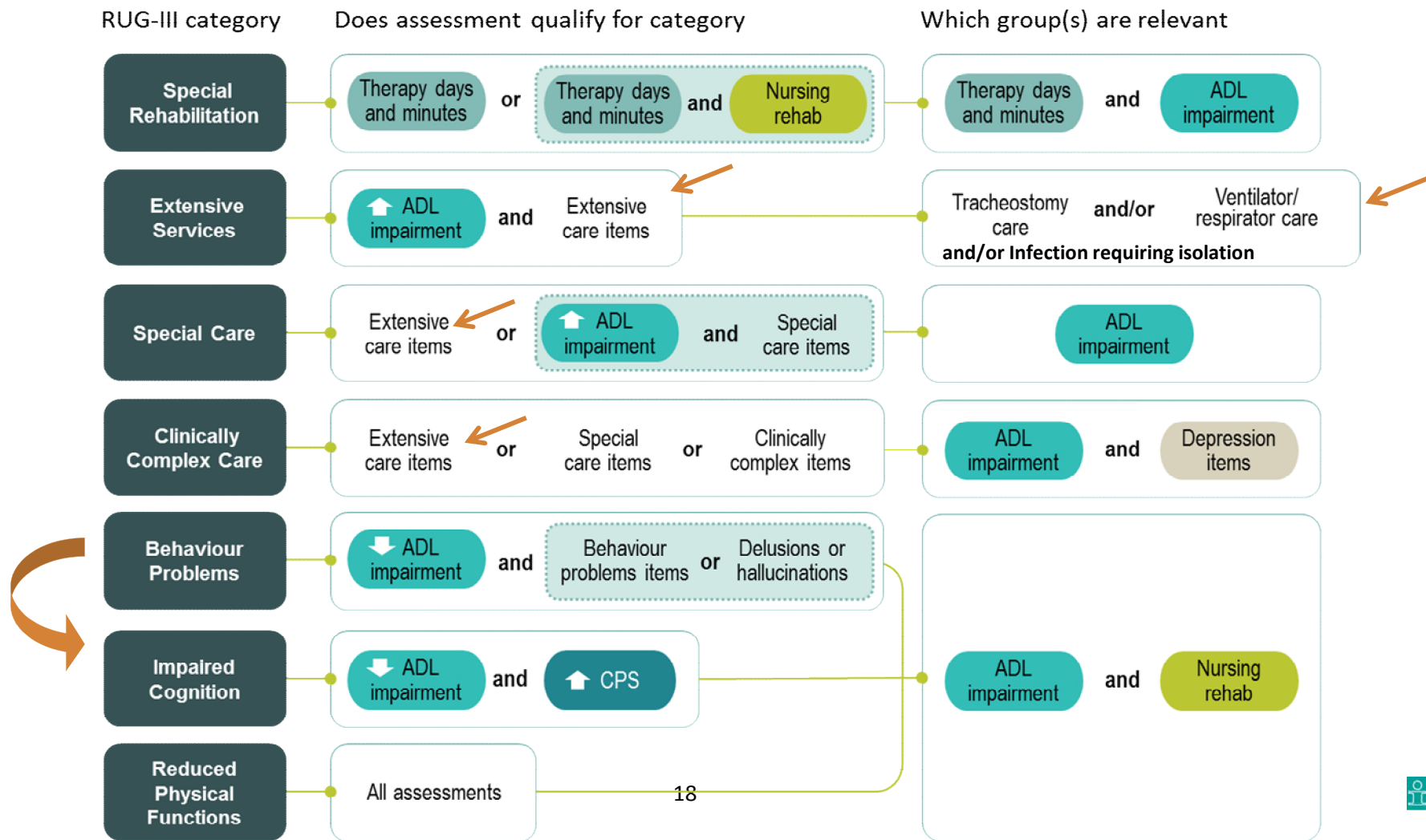
Visit CIHI booth #57



@cihi_icis

Summary of RUG-III Plus Grouper

What's new with case mix





Timelines for RUG-III Plus Release

January 2017: specifications on vendor website

April 2017: specifications on CIHI eStore