



## **New Business Models in Waste with the Rise of Social Enterprise**

Chair: John Weate, Resource Recovery Australia

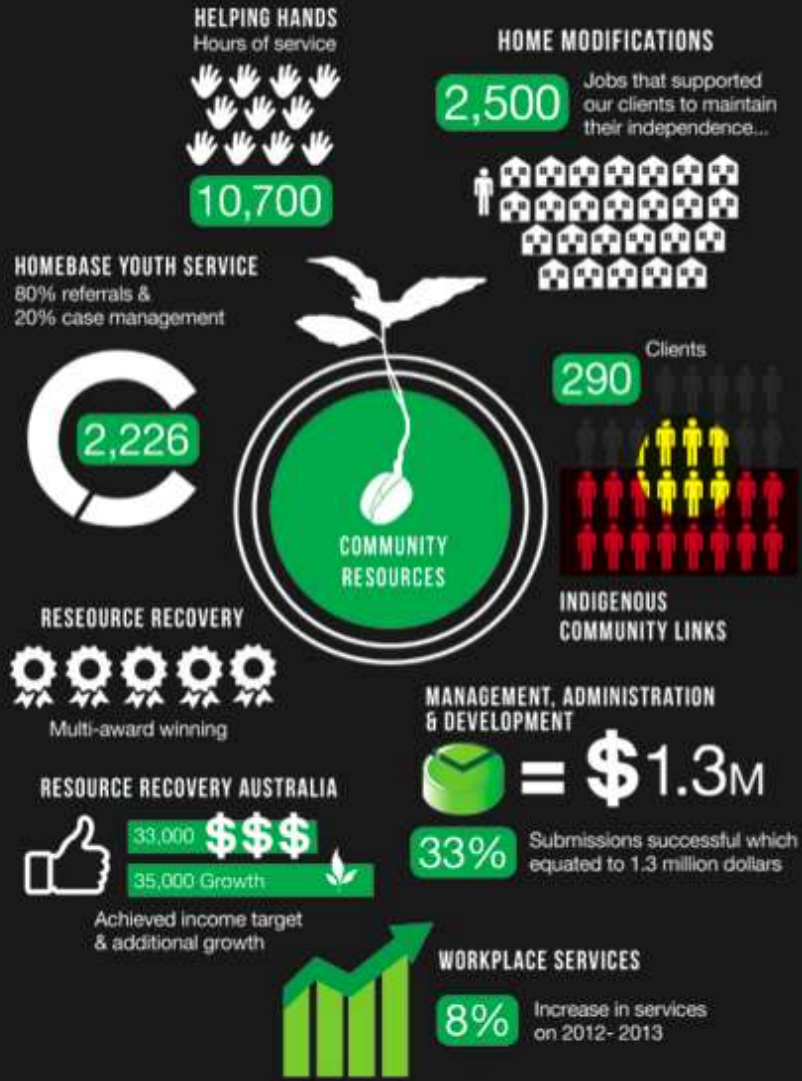


# Resource Recovery

## A 23 Year Social Enterprise



# OUR SERVICES & PROGRAMS



Profit for purpose community development Association

Using local knowledge and networks, in partnership with government, industry and community, we assist disadvantaged people to develop social and economic livelihoods for themselves.

- 4 social enterprises
- 2 community programs
- 70 staff

Largest Aboriginal employer



# Official opening of recycling depot

The Tuncurry Recycling Depot will be officially opened this Saturday, at a public function at the depot at 12.30pm.

Great Lakes Shire Council President, Warren Williams will cut the ribbon at the opening ceremony, which will be hosted by Great Lakes SkillShare.

Other dignitaries attending will be the Member for Myall Lakes, John Turner, Shadow

Minister for the Environment, Pam Allan, a representative from the Commonwealth Department of Employment, Education and Training, which sponsors SkillShare, Great Lakes Shire Clerk and General Manager, Rex Mooney, Cr Sandra Machin and other local councillors and council staff members.

An inspection of the recycling operation will begin at noon and demonstrations of recycling

will take place after the official ceremony, when light refreshments will also be served.

Great Lakes SkillShare manager, John Weate said he looked forward to Saturday's celebration, as it would give him a chance to convey his official thanks to the supporters and sponsors of the recycling project.

It is already providing a model for other councils looking to more cost-

effective and environmentally friendly methods of waste management.

"At a time when the importance of recycling was not yet widely accepted, Cr Sandra Machin, in particular, showed her commitment to the cause by championing our proposal in its critical early stages.

"We would like to take this opportunity to publicly acknowledge her energy and vision," Mr Weate said.





1991

- \$60, 000 Landfill Operation Contract
- Recyclables & Re-use Recovery
- Tip Shop
- Green Waste Composting
- Dog Pound
- Other sites – Tea Gardens, Buladelah, Stroud
- Transfer Stations
- Bulky Waste Pick Ups
- Land Clean Ups
- Landfill Capping & Remediation
- Engineering Workshop
- Excavation and Earthmoving
- Mattresses, EPS, Gas Bottles, other problem wastes
- Green Corps – Bush Regeneration
- The Green - Community Garden
- Green Bikes
- Men's Shed
- Builders Barn



2015

- \$2 Million Turnover
- Great Lakes Resource Recovery Park
- 25 year Masterplan with Council
- Resource Recovery Australia Consulting



## SOCIAL INCLUSION = A JOB

24 Full Time, 10 Casual

Staff turn over is less than 10%

Growth is >10% p.a = Approx 6 new jobs each year

75% from target group.



# Accredited training

Huge Social Outcomes

- ✓ Cert III in Asset Maintenance (Waste Management) 20 staff
- ✓ Cert II in Conservation and Land Management 16 volunteers
- ✓ Cert II in Transport and Distribution 6 staff
- ✓ National Measurement Institute (Weighbridge Operator) 12 staff
- ✓ Literacy and Numeracy training 6 staff
- ✓ OH&S General Induction 50 staff and volunteers
- ✓ First Aid certificates 25 staff
- ✓ Forklift 50 staff and volunteers
- ✓ Light Rigid Truck 12 staff
- ✓ Heavy Rigid 12 staff
- ✓ Medium Rigid Truck 12 staff
- ✓ Skid Steer Loader 50 staff
- ✓ Excavator tickets 25 staff

# Community Project – onsite – “The Green”



Creating a showcase  
of sustainability



Involving and educating the whole community. 90 volunteers learning how to live sustainably and creating a creative, re-use recreation space for the whole community.



# Additional Services



## Aboriginal Lands Cleanup





## AWARDS

**2011** Australasian Local Government Innovation in Waste Award

**2011** Waste Transfer Station (small to medium) excellent design and operation

**2012** Profiled as one of the top three Community Recycling Enterprises (CREs) in Australia - A baseline study of Australia's community recycling enterprises

**2012** National Innovation Grant – Westpac Foundation

**2013** Social Enterprise of the Year (medium to large) – Inaugural Social Enterprise Awards

**2013** Social Procurement Supporter of the Year – Great Lakes Council - Social Enterprise Awards.



# RESOURCE RECOVERY

Australia



Transfer Knowledge Transform Waste



RRA work with local government, industry and communities to broker, establish and scale social enterprises that sustainably manage waste and generate local training and employment opportunities.



**Westpac Foundation**  
*Catalyst for community wellbeing*



**Westpac Foundation**

*Catalyst for community wellbeing*



**Social Procurement**

AUSTRALASIA



# Social Procurement Australasia

- Developing and delivering strategic procurement outcomes
- Procurement Roadmaps with Local Government Peak Bodies
- NSW Social Procurement Guidelines
- Social Procurement: The Business Case



**Social Procurement**  
AUSTRALASIA





63 locations of  
Community recycling enterprises



Working in partnership to transform  
Waste into Wages.



1,500 employed





# Transfer Knowledge Transform Waste





# The Gladstone Experience





## Job Creation – 6 months

	Barriers To Employment	Aboriginal	Total Employees per site
Gladstone Transfer Station	9	2	11
Benaraby Waste Management Centre	8	1	9
Transfer Stations	5	2	7
Scrap Metal	1	0	1
Total Employees	23	5	28

# INDUSTRIAL ECOLOGY

## North & South Coast



Photos courtesy of Australian Native Landscapes



Photos courtesy of Reptiles



[www.resourcerecovery.org.au](http://www.resourcerecovery.org.au)



Next