



University Centre for
RURAL HEALTH
education · research · workforce

Who wins?

Robyn Fitzroy – Program Director

Sarah Miles – Clinical Education Manager

Kate van Dommele – Multidisciplinary Education Coordinator

Acknowledge the Wigabul Wyabul people of the Bundjalung Nation

UCRH is a collaborating Centre between:



THE UNIVERSITY OF
SYDNEY



WESTERN SYDNEY
UNIVERSITY



Southern Cross
University



UNIVERSITY
OF WOLLONGONG
AUSTRALIA

1



University Centre for
RURAL HEALTH
education · research · workforce

UCRH North Coast

17 UDRH's - rural health training & workforce development

3 campuses – Murwillumbah, Lismore, Grafton

23 universities

20 disciplines

2018

> 4300 weeks of placement

> 832 students



UCRH is a collaborating Centre between:



THE UNIVERSITY OF
SYDNEY



WESTERN SYDNEY
UNIVERSITY



Southern Cross
University



UNIVERSITY
OF WOLLONGONG
AUSTRALIA

2

Immersive service-learning

- Not necessarily traditional ratio of 1:1 student to discipline-specific professional
- Service outcomes for host organisations & clients
- More than meets curriculum needs
- Contemporary practice
- Inter-professionalism experiences
- Theory into practice
- Community engagement

UCRH is a collaborating Centre between:



THE UNIVERSITY OF
SYDNEY



WESTERN SYDNEY
UNIVERSITY



Southern Cross
University



UNIVERSITY
OF WOLLONGONG
AUSTRALIA

3

Work-Ready Placements

800 students (non-traditional placements)

50 community sites

- public schools
- Preschools
- long day care
- aged care facilities
- student-led clinics
- not-for-profit organisations & social care agencies

13 local communities (disadvantaged, limited access and services)

UCRH is a collaborating Centre between:



THE UNIVERSITY OF
SYDNEY



WESTERN SYDNEY
UNIVERSITY



Southern Cross
University

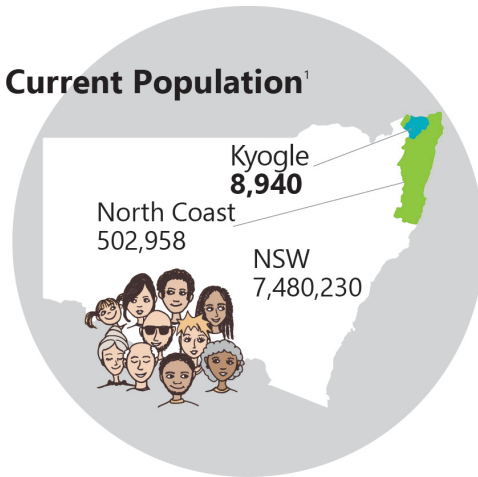


UNIVERSITY
OF WOLLONGONG
AUSTRALIA

4

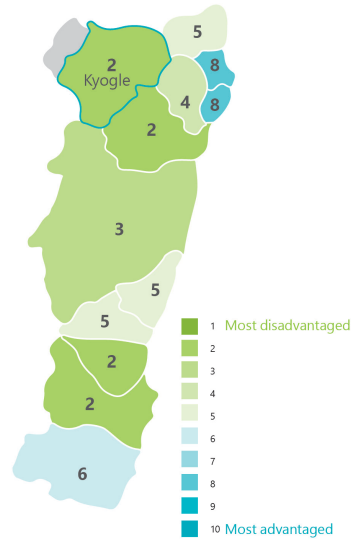
KYOGLE, NSW

Current Population¹



Socio-Economic Disadvantage¹

According to the 2016 Socio-Economic Index of Disadvantage, Kyogle LGA has been identified as an area of socio-economic disadvantage.



University Centre for Rural Health

5

5

Median Age

Kyogle	North Coast	NSW
50	47	38

Aboriginal Population

Kyogle	North Coast	NSW
4.3%	5.0%	2.9%

Children & Infants (0-14)

Kyogle	North Coast	NSW
16.3%	17.1%	18.5%

Older People (65+)

Kyogle	North Coast	NSW
23.0%	23.7%	16.3%

122
Kyogle
Participants

NORTH COAST
3,372

7.4%
of respondents identified as ABORIGINAL or TORRES STRAIT ISLANDER

14.8%
of respondents identified as LESBIAN, GAY, BISEXUAL, QUEER, TRANSGENDER, NON-BINARY OR WITH A DIFFERENT GENDER OR SEXUAL IDENTITY

21.7%
of respondents said they wouldn't be able to get \$2,000 for something important within a WEEK

33.6%
of respondents had PRIVATE HEALTH INSURANCE

17.4%
of respondents were BORN OVERSEAS

5.7%
of respondents were AGED between 15-24 YEARS

27.9%
of respondents were AGED 65 YEARS or over

14.2%
of respondents WORKED 35 or more HOURS a week

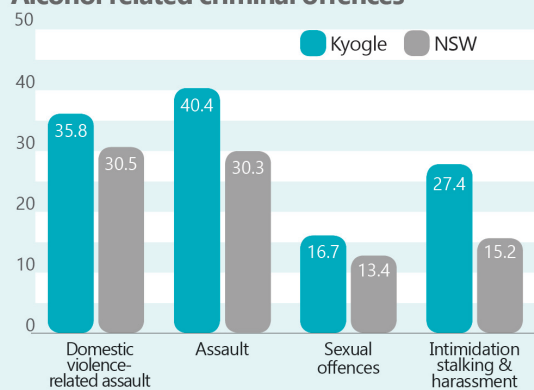
University Centre for Rural Health

6

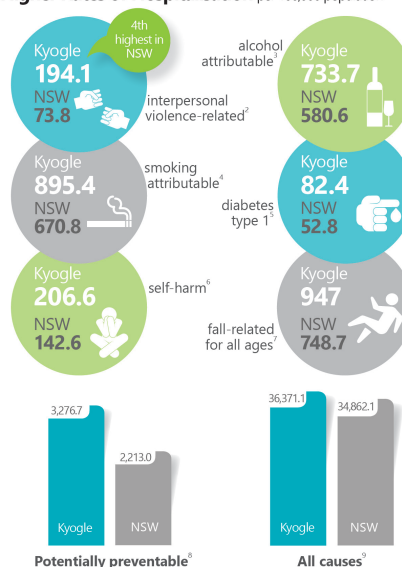
6

Alcohol and other drugs¹³

Alcohol related criminal offences



Higher Rates of Hospitalisation per 100,000 population

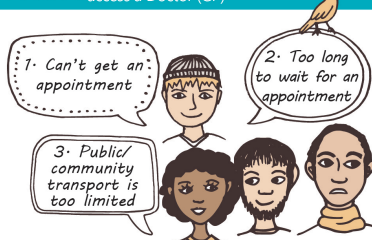


University Centre for Rural Health

7

7

41.8% of respondents said it was difficult to access a Doctor (GP)¹



47.4% of respondents said it was difficult to access Allied Health Professionals²

Difficult to access	Kyogle	North Coast
1 Psychologist	38.0%	29.6%
2 Dentist	32.0%	38.1%
3 Optometrist	27.2%	14.1%
4 Social Worker	18.5%	10.0%
5 Nurse	16.6%	7.7%

Top 3 Challenges:

1. Distance of travel - 71.7%
2. Cost - 52.8%
3. Lack of Specialists - 50.7%

Allied Health Services

	Kyogle	North Coast	NSW
Health Professionals - FTE per 1,000 population¹⁴			
ATSI ¹⁵ Health Practitioners	0.00	0.02	0.01
Chiropractors	0.00	0.16	0.19
Chinese Medicine Practitioners	0.00	0.15	0.18
Dental Practitioners	0.00	0.7	0.77
Medical Radiation Practitioners	0.00	0.51	0.52
Nurses and Midwives	6.66	12.44	10.83
Occupational Therapists	0.00	0.51	0.54
Optometrists	0.00	0.16	0.2
Osteopaths	0.00	0.14	0.06
Pharmacists	0.44	0.79	0.92
Physiotherapists	0.44	0.82	0.89
Podiatrists	0.00	0.15	0.15
Psychologists	0.63	0.82	0.96

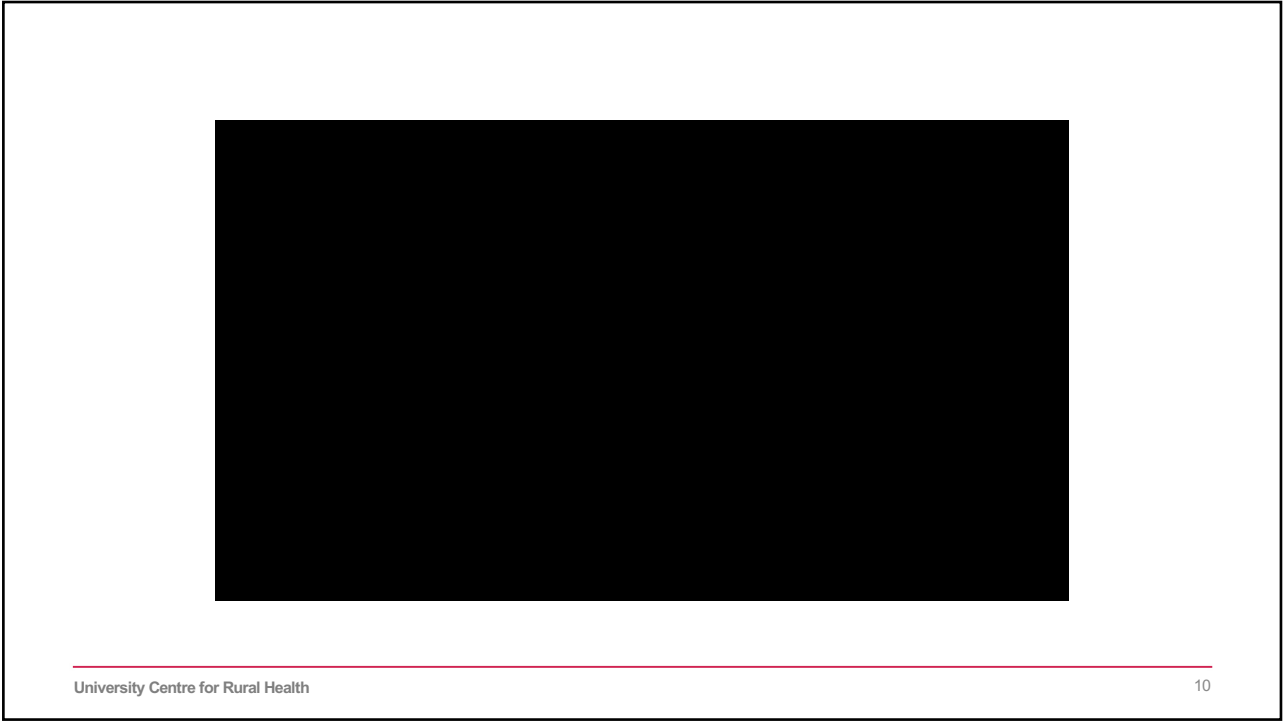
University Centre for Rural Health

8

8



9



10