

Technical and Regulatory Issues Facing Nuclear Power Plants

Leveraging Global Experience



Barry Kaufer
Director, CORDEL

2016 – 2017 Regional Workshop Series
1-2 June 2016

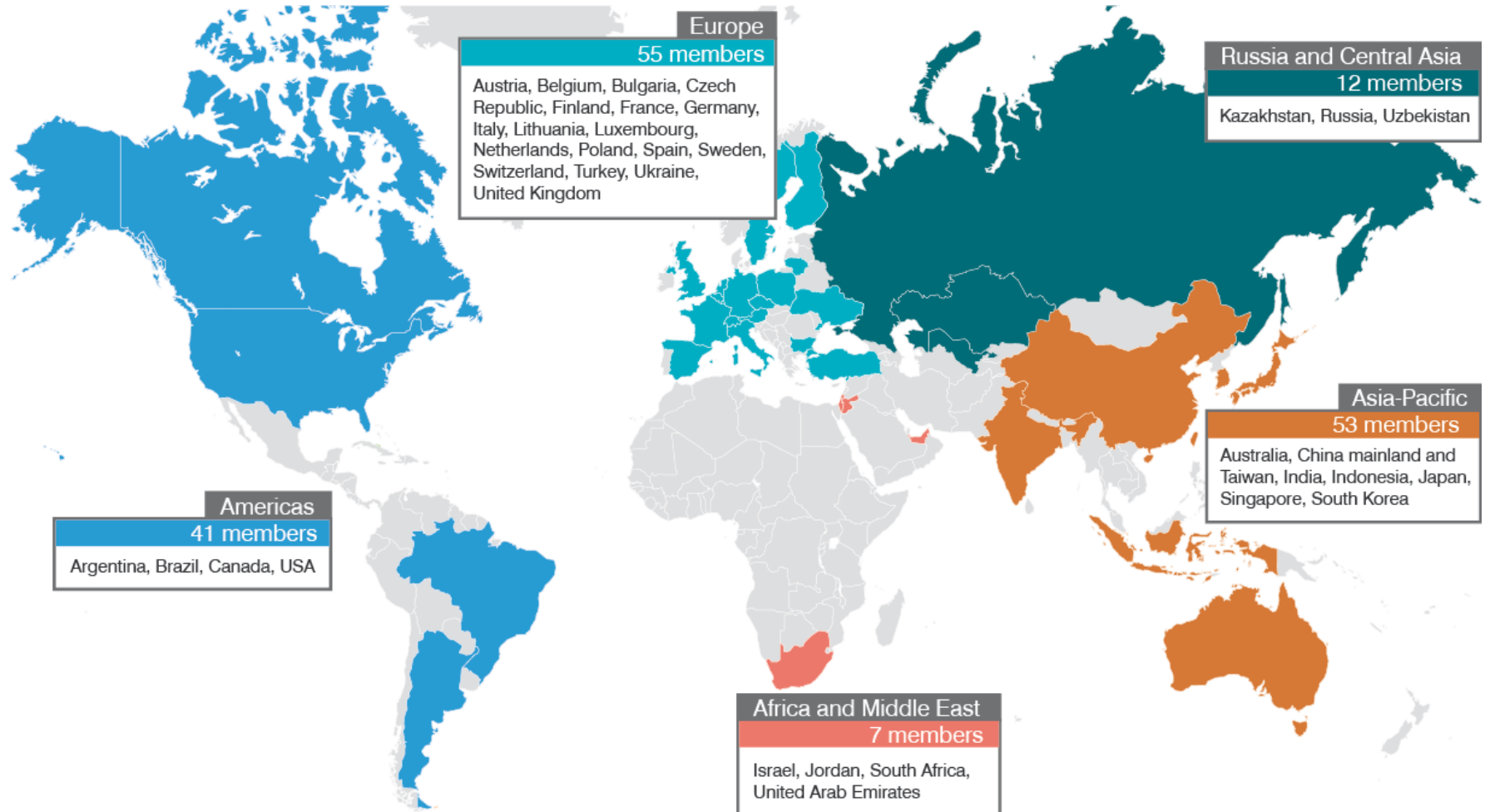
Contents

- World Nuclear Association
 - CORDEL Working Group and Long Term Operation Task Force
- Harmony Project
- 2016 – 2017 Regional Workshop Series
- Workshop Program

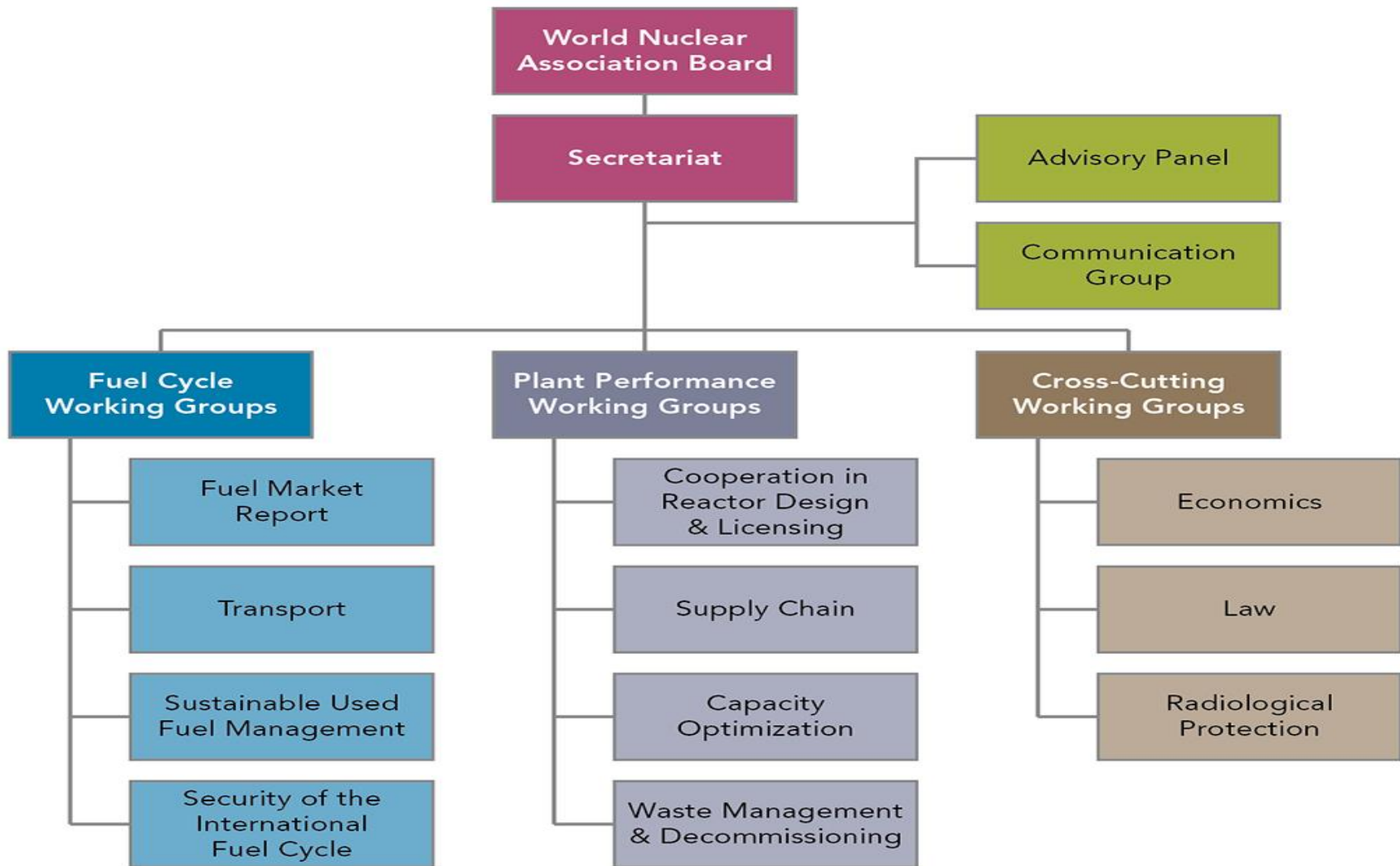
What is the World Nuclear Association

- The World Nuclear Association (WNA) is the international organization that promotes nuclear energy and supports the many companies that comprise the global nuclear industry.
- WNA membership encompasses virtually all world uranium mining, conversion, enrichment and fuel fabrication; all reactor vendors; major nuclear engineering, construction, and waste management companies; and the majority of world nuclear generation. Other WNA members provide international services in nuclear transport, law, insurance, brokerage, industry analysis and finance.
- *Nuclear Network*
 - World Nuclear University (WNU) including its Summer Institute (SI): 28 June to 5 August, Ottawa, Canada
 - World Nuclear News (WNN): Has provided full coverage of the nuclear power industry since January 2007.
 - Information Library: Over 150 Information Papers and Position Statements available (received 4.8 million page views in 2013).
 - Annual Symposium (14-16 September, London) + side meetings

The World Nuclear Association is the industry organisation that represents the global nuclear industry



World Nuclear Association Structure



Cordel – International Focal Point On Standardization

World Nuclear Association

Working Groups: Supply Chain, Law, Long Term Operation

International and Regional Governmental Agencies:

MDEP, IAEA, OECD/NEA, IEA, ICRP, WENRA

CORDEL

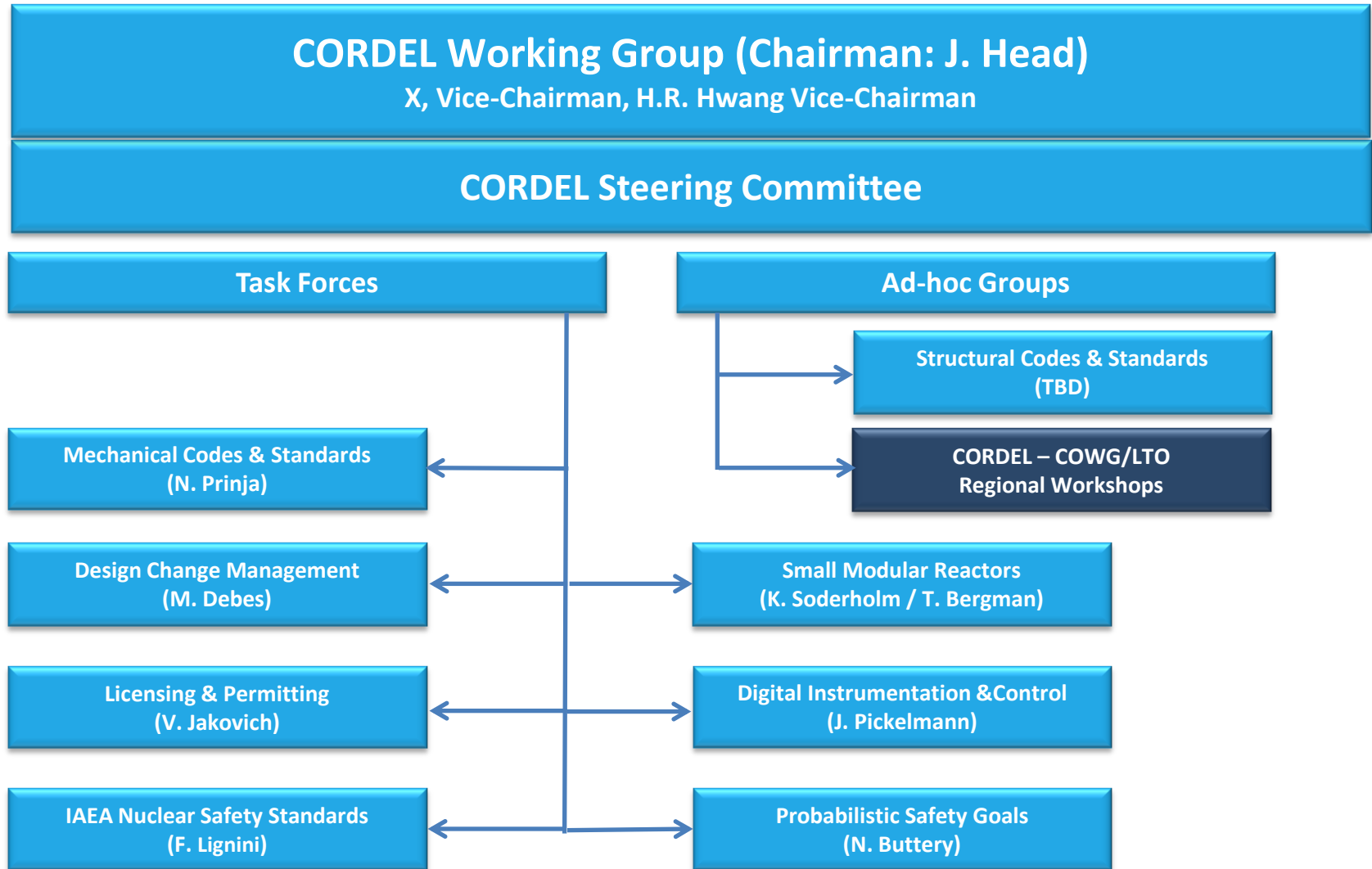
International and Regional Industry Organizations:

WANO, NEI, EPRI, INPO, FORATOM, EUR, ENISS....

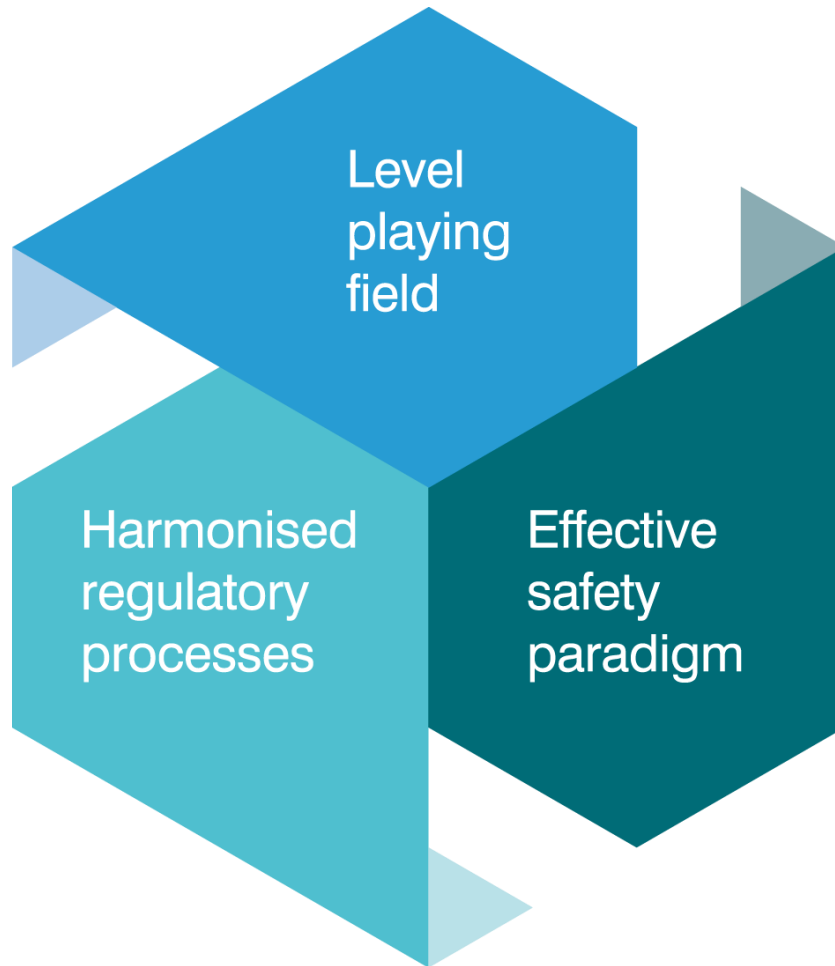
Codes & Standards

ANS, ASME, AFCEN, KEPIC, JSME, NIKIET, CSA, IEC, IEEE, ISO....

CORDEL Structure



The Harmony Project

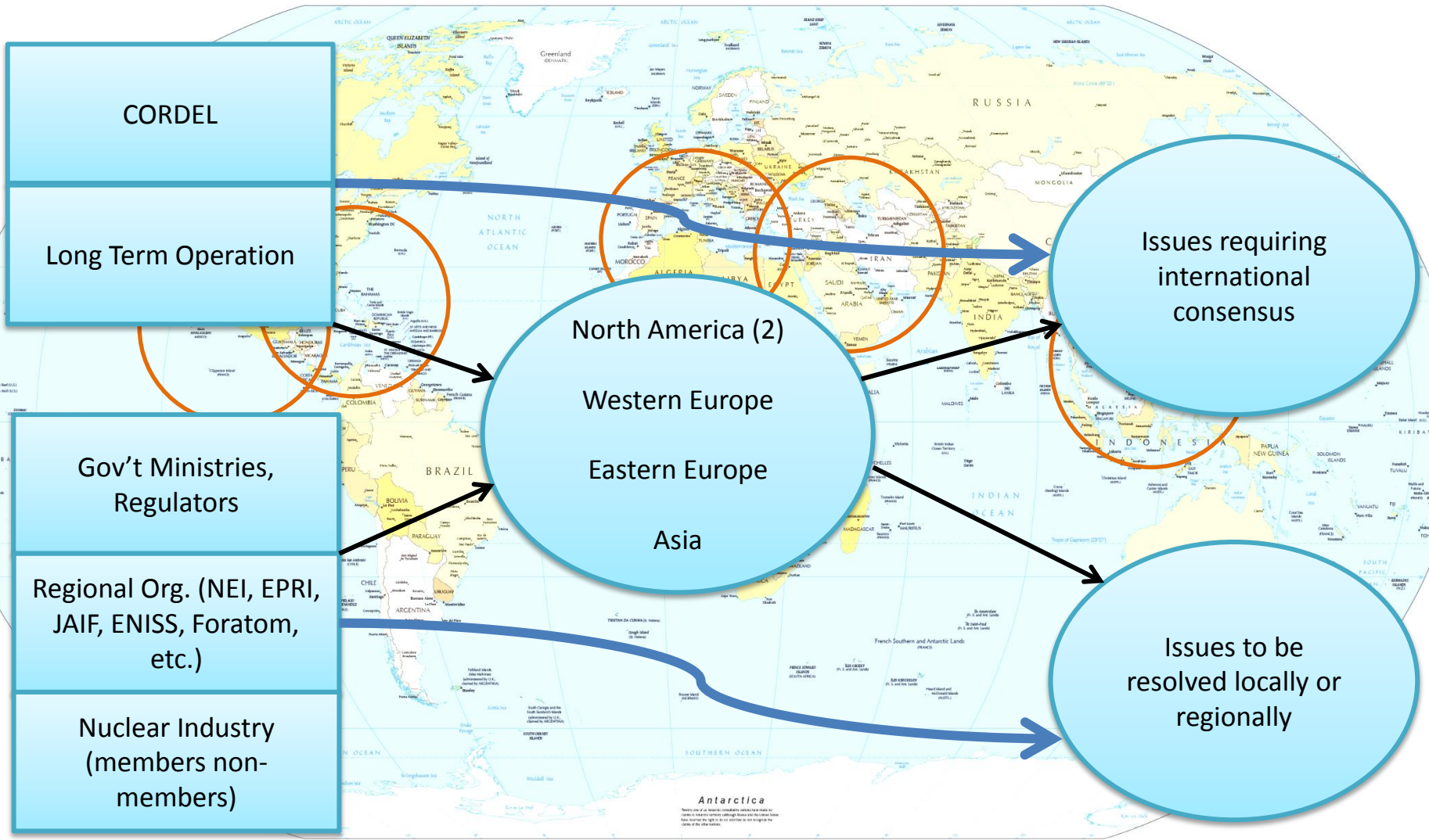


1000 gigawatt new nuclear capacity by 2050

25% of electricity supply 2050

Nuclear energy to deliver reliable, affordable and clean electricity

Overview of CORDEL / LTO



Participation

Venues

Products

2016 -2017 Workshop Series

- The main objective is to solicit your ideas on the main technical and regulatory issues facing nuclear power plants. The outputs from this and other planned workshops will be used to help address regional issues and where necessary, the global programme of work performed by the World Nuclear Association and other international agencies.
- Obtaining a broad cross-section of views will enable the right issues to be identified.
- Next 'proposed' workshop: Moscow, Russian Federation, October 2016

Logistics

- Agendas and List of Delegates available at the back of the Room together with various World Nuclear Association Publications.
- Tea and Coffee will be served during Coffee Breaks and Lunch is provided.
- We kindly ask to turn your mobile phone off.
- Reception at the Willis Tower this evening. Important to confirm before lunch break if not done yet (Meeting point in the lobby of Chase Tower at the end of last session).
- Security:
 - In case of an emergency, we will be contacted by the building intercom system that will notify us of where to go.
 - The emergency exit stairs are located on the East or West side of the building – 2 sets of stairs on each side.