

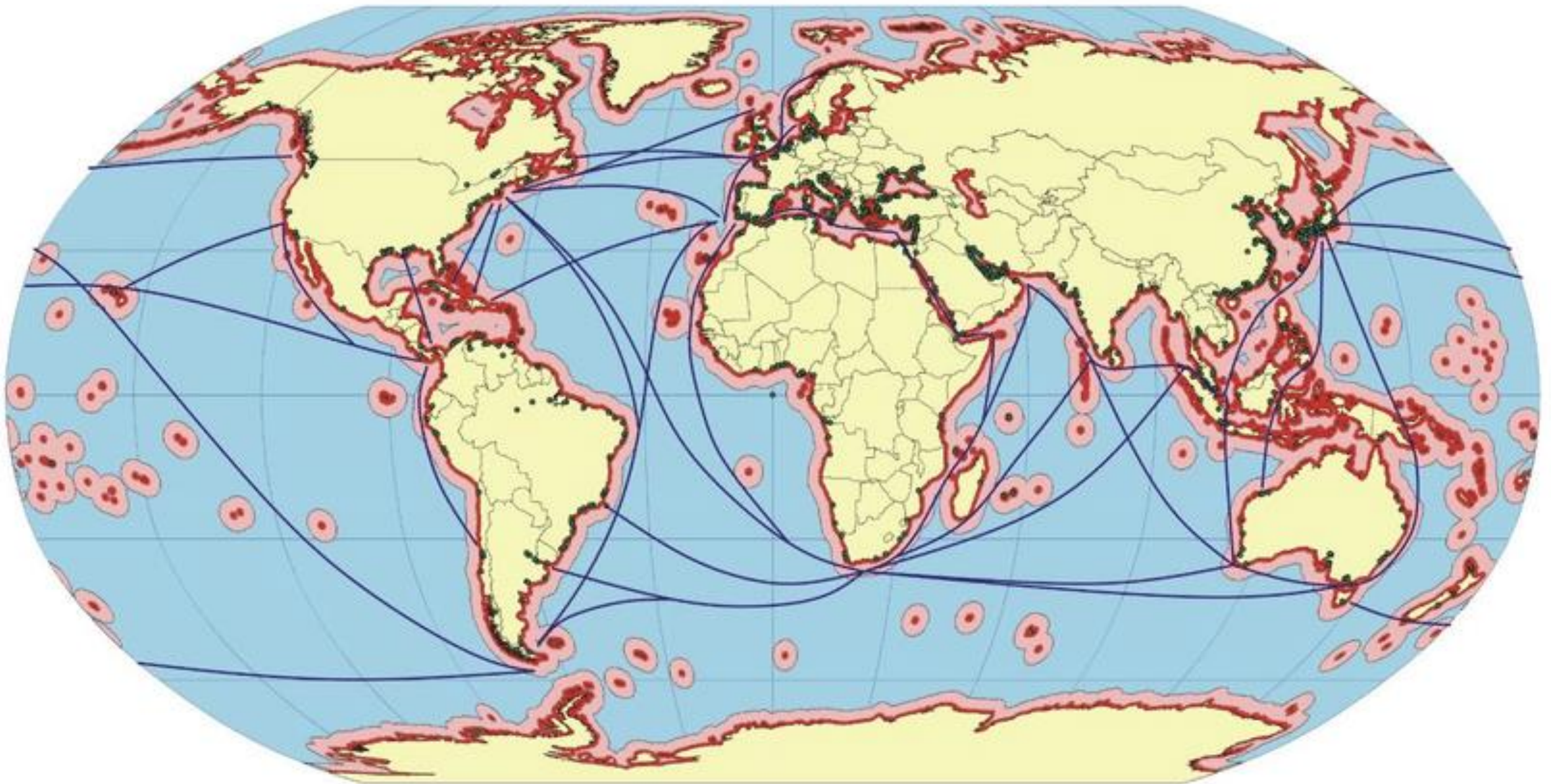


Connecting dots in Maritime Environment

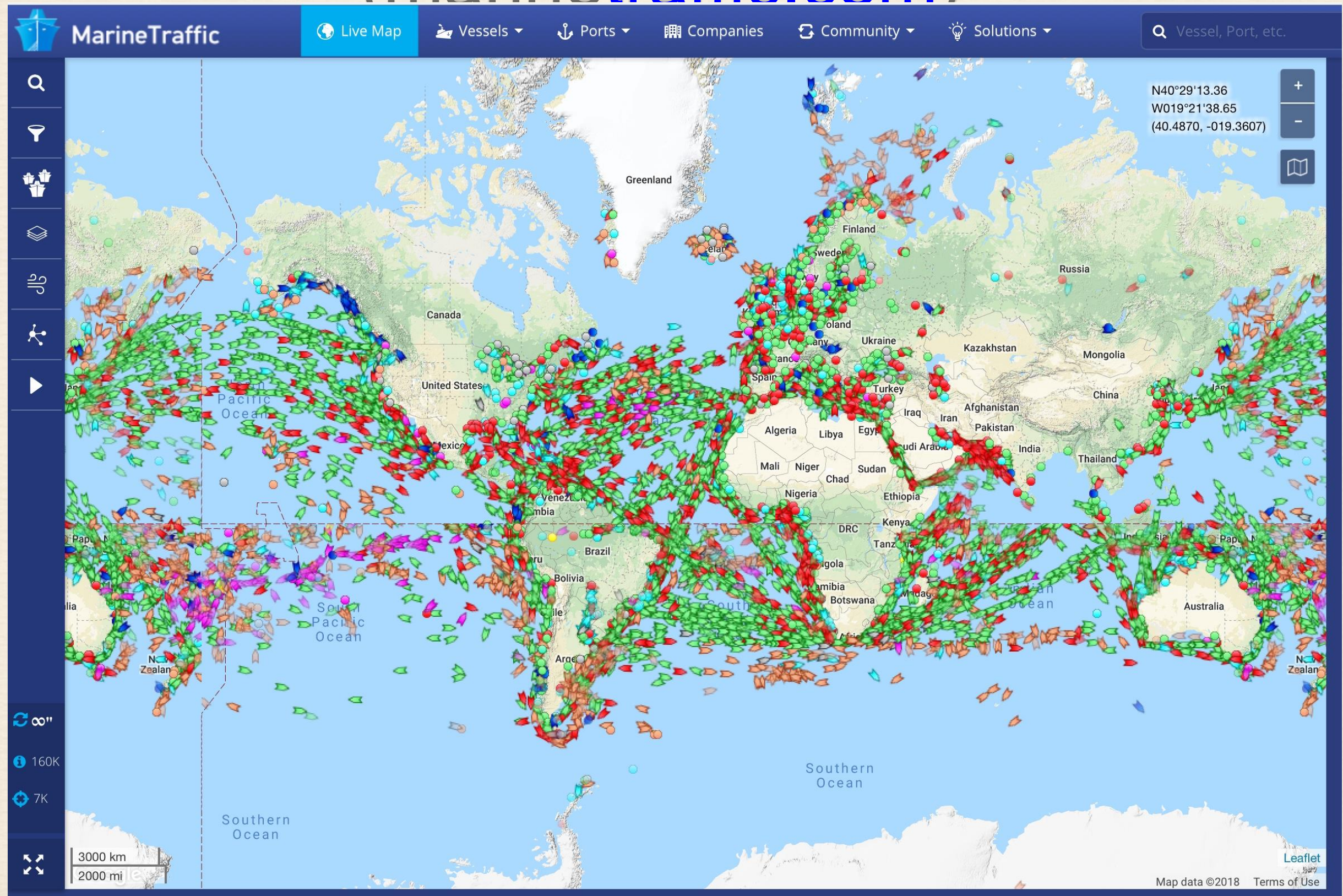


Raju Boddu
Antigua&Barbuda/ CCLEC
7 June 2018, Lima, Peru

Maritime Trade Routes



Snap Shot of Maritime Traffic (marinetraffic.com)



Container Traffic (TEU) across Trade Routes

2013 (Source: World Shipping Council)

Route	West Bound	East Bound	North Bound	South Bound	Total
Asia-North America	7,739,000	15,386,000			23,125,000
Asia-North Europe	9,187,000	4,519,000			13,706,000
Asia-Mediterranean	4,678,000	2,061,000			6,739,000
Asia-Middle East	3,700,000	1,314,000			5,014,000
North Europe-North America	2,636,000	2,074,000			4,710,000
Australia-Far East *			1,072,016	1,851,263	2,923,279
Asia-East Coast South America			621,000	1,510,000	2,131,000
North Europe/Mediterranean-East Coast South America			795,000	885,000	1,680,000
North America-East Coast South America			656,000	650,000	1,306,000

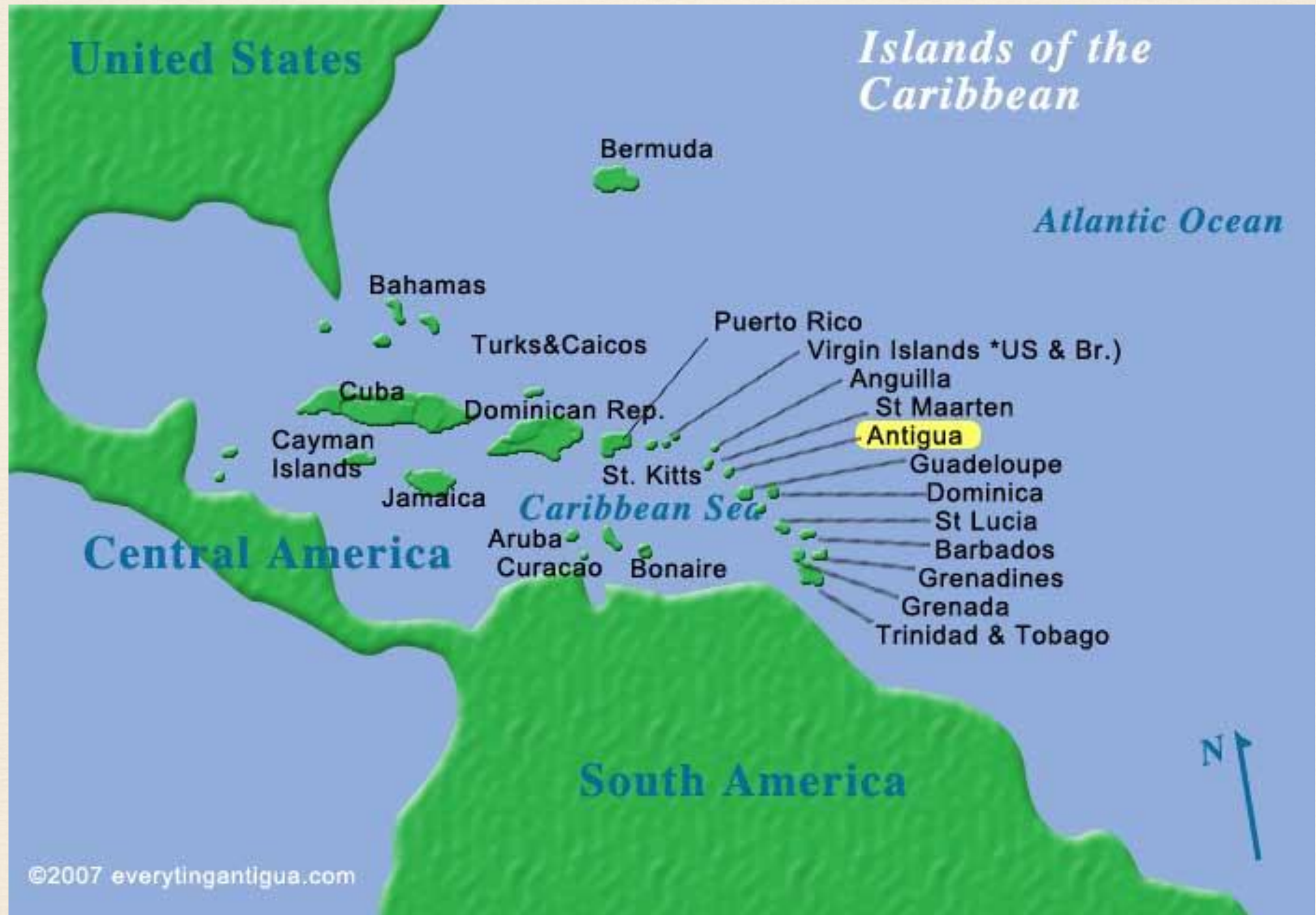
Maritime Activity

- ❖ Container Port Throughput in 2016-701.42 million TEU (687.71million in 2015)- UNCTAD
- ❖ Cruise industry generated an estimated revenue of \$39.6 billion in 2015
- ❖ Passenger capacity in Cruise market reached 466,000 in 2016; expected to be 521,000 in 2018
- ❖ More than 10, 000 Yachts of 100 feet or more in US alone. Millions of recreational boats

Challenges to Connecting dots

- Differing legislative frame works:
- Differing National Priorities in Border Security, Trade facilitation and Revenue collection
- Organizational issues of lack of Co-ordination among different Border Security and Trade Facilitation agencies
- Infrastructure inadequacies of varying degrees
- Capacity building challenges
- Varied levels of technology interventions and incompatible systems nationally, regionally and internationally
- Resource constraints to leverage latest technology to enhance efficiencies and effectiveness in border security, trade facilitation and revenue collections

Caribbean Context



Collaborative efforts in the Caribbean

- ❖ Caribbean Law Enforcement Council(CCLEC)
- ❖ CCLEC's RCS and SailClear
- ❖ CARICOM IMPACS-JRCC
- ❖ APIS/PNR
- ❖ ACIS-Advance Cargo Information System

SAFE Frame work of WCO

- ❖ Three Pillars plus various tools and guidance
- ❖ This should be the backbone to connecting the dots
- ❖ Appropriate Technologies to be leveraged

Leveraging Technology

- ❖ Data Analytics
- ❖ Artificial Intelligence
- ❖ Blockchain Technology

The Mantra

- ❖ WCO SAFE frame work to be the underlying back bone
- ❖ Selection of appropriate technology after evaluating the various IT related risks
- ❖ Advocacy for Customs administration to active partners in Border security operations

Conclusion

- ❖ Borders divide, but Customs connects
and therefore,
- ❖ Dynamically leading the modernization and connectivity in a rapidly changing world

Thank You



Questions time!!!