

Twitter: @pallcarepharm

# The Approach To End-Of-Life Care: A Community Pharmacy's Perspective

Paul Tait, Chris Horwood, Paul Hakendorf,  
Timothy To

September 2015



Government  
of South Australia

SA Health









**Dyspnoea**

**Anxiety  
associated with  
Dyspnoea**

**Nausea**

**Noisy  
Breathing**

**Moderate to Severe Pain**

**Agitation  
associated with  
Delirium**

**Delirium**



**Dyspnoea**

**Anxiety associated with Dyspnoea**

**Nausea**

**Noisy Breathing**

**Moderate to Severe Pain**

**Agitation associated with Delirium**

**Delirium**

**Hydromorphone 10mg/mL Inj**

**Morphine 10mg/mL Inj**

**Oxycodone 10mg/mL Inj**

**Fentanyl 100mcg/2mL Inj**

**Morphine 10mg/mL oral solution**

**Clonazepam 1mg/mL Inj**

**Clonazepam 2.5mg/mL oral solution**

**Midazolam 5mg/mL Inj**

**Haloperidol 5mg/mL Inj**

**Dexamethasone 4mg/mL Inj**

**Metoclopramide 10mg/2mL Inj**

**Hyoscine Butylbromide 20mg/mL Inj**

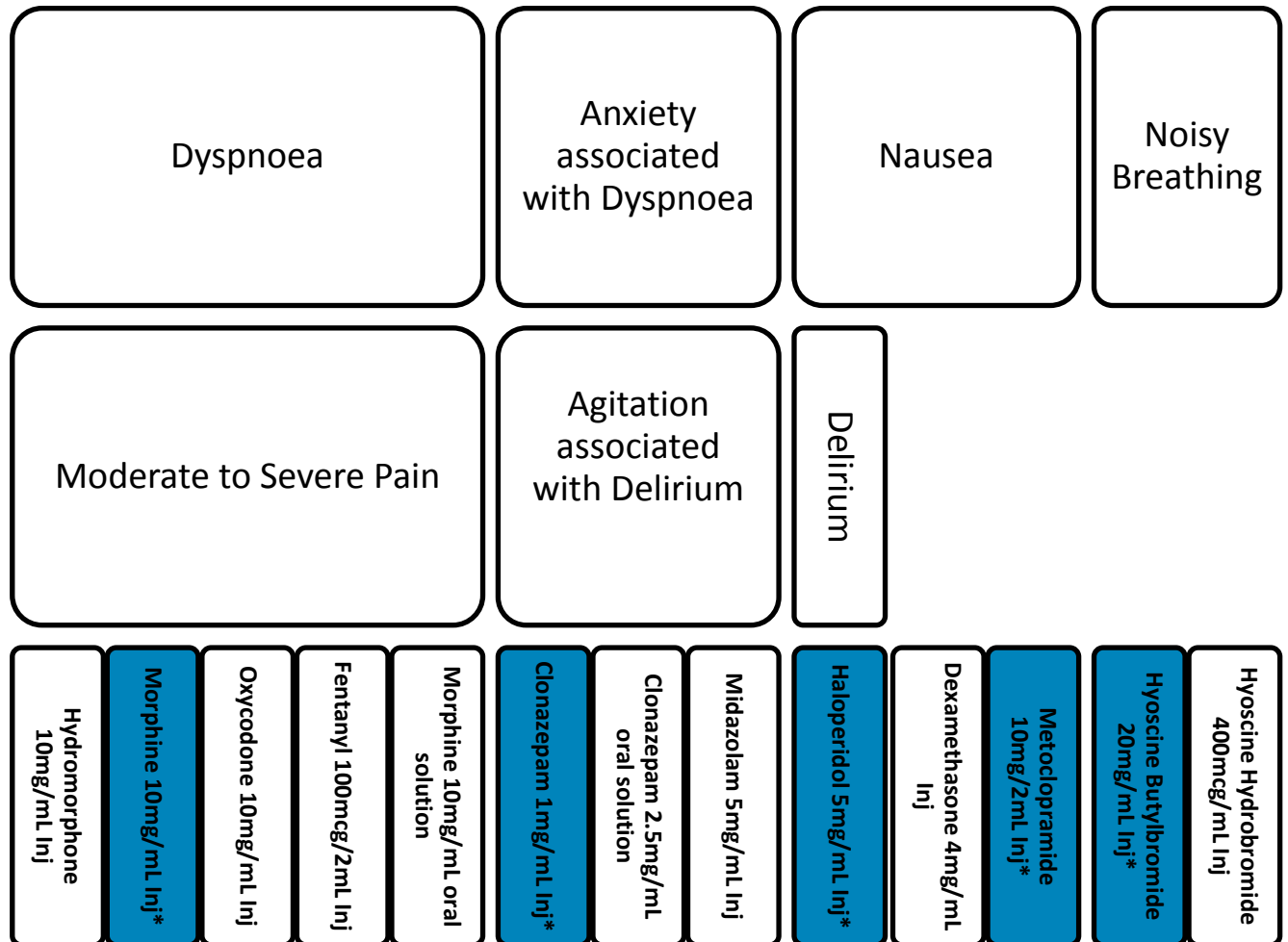
**Hyoscine Hydrobromide 400mcg/mL Inj**



## Baseline (2012) Findings

- > 26% response rate
- > Median number of medicines stocked = 3/13
- > About a quarter of pharmacies carried none of the medicines
- > Appropriate medicines expiring imminently in many pharmacies
- > Most pharmacists contact other nearby pharmacies to acquire stock urgently
- > Community pharmacists struggle to anticipate the medicines to stock

# SA Core Medicines Project



CLINICAL



Paul Tait  
Bel Morris  
Timothy To

# Core palliative medicines: meeting the needs of non- complex community patients

## PALLIATIVE CARE WORKSHOP FOR COMMUNITY PHARMACISTS

Are you a community pharmacist with customers needing end-of-life-care?

Would you like to learn more about how pharmacists can help to deliver good palliative care?

The Palliative Care Council SA is presenting a workshop in which you will gain an understanding of:

- The experiences of people living with a terminal illness
- The role of specialist palliative care services
- The role of the community pharmacist in end-of-life care
- The pharmacological management of symptoms in the terminal phase







## Aim

1. Compare results between 2012 and 2015
2. Identify factors predictive of pharmacies carrying a broad range of medicines

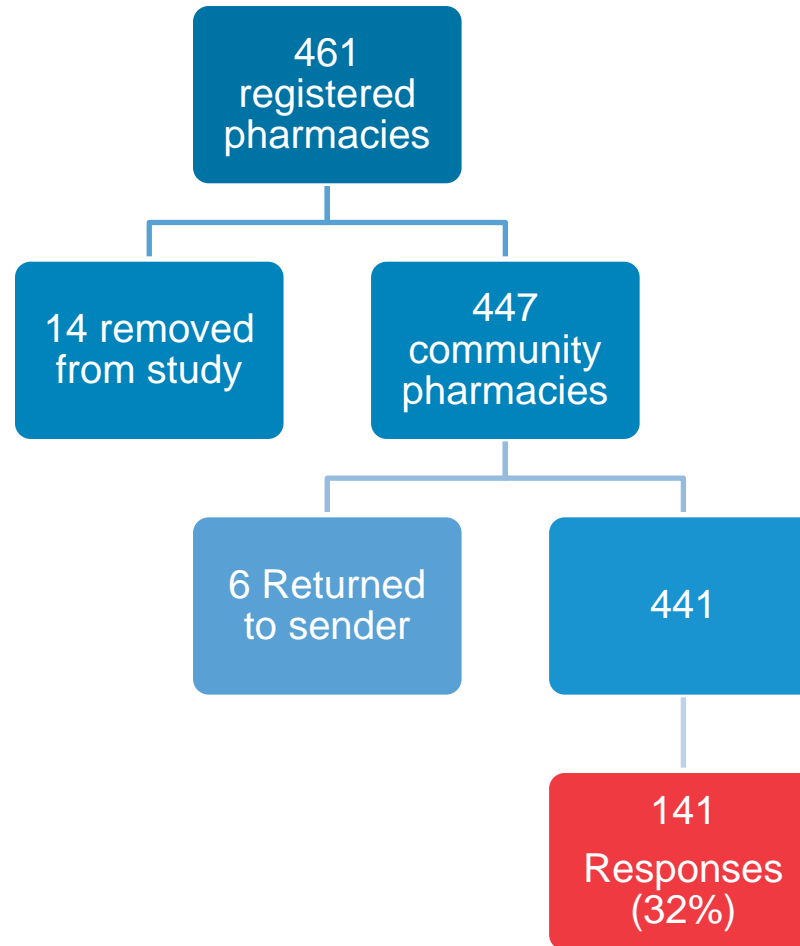


# Methods

> Postal survey

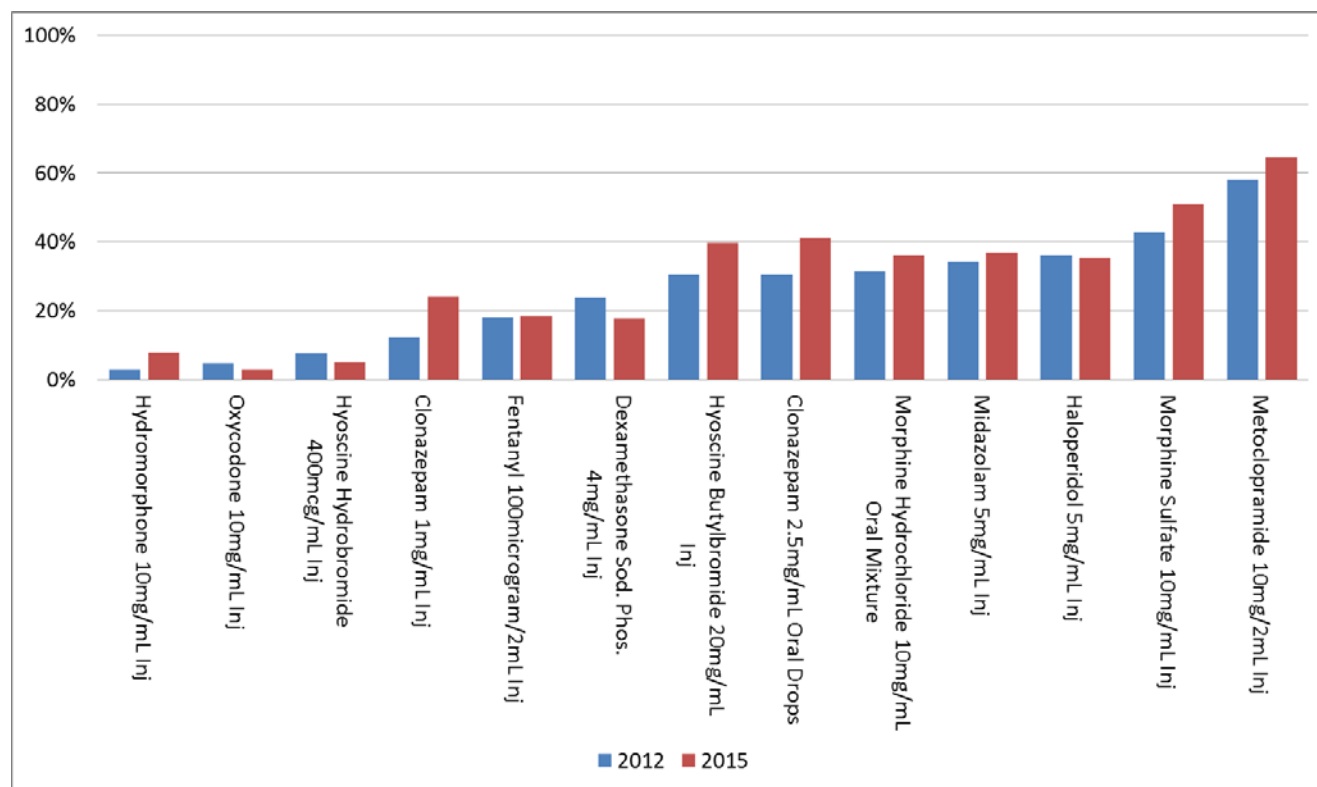
1. Demographics
2. Awareness
3. **Range of medicines & expiry**
4. Response if unable to supply medicines

# Results



# Access To Stock

> Median number of medicines stocked = 3





## Access To Stock

- > Proportion of pharmacies with stock of all 5 core medicines:
  - 7.9% (2012) to 21.5% in metropolitan Adelaide
  - 4.8% (2012) to 12.5% in rural South Australia

# Expiry Dates

Median number of months to expiry		Medicine	Expiry <6 months	
2012	2015		2012	2015
12	21*	Clonazepam 1mg/mL inj	38%	0%
22	30*	Haloperidol 5mg/mL inj	8%	0%
24	25	Hyoscine Butylbromide 20mg/mL Inj	13%	2%
13	15	Metoclopramide 10mg/2mL Inj	5%	3%
19	18	Morphine Sulfate 10mg/mL Inj	9%	0%



## If Unable To Provide Medicines

- > 106 (75.2%) respondents would contact another pharmacy
- > 27 (19.1%) respondents indicated they would contact the doctor to recommend a:
  - change in medicine; or
  - change in strength of medicine

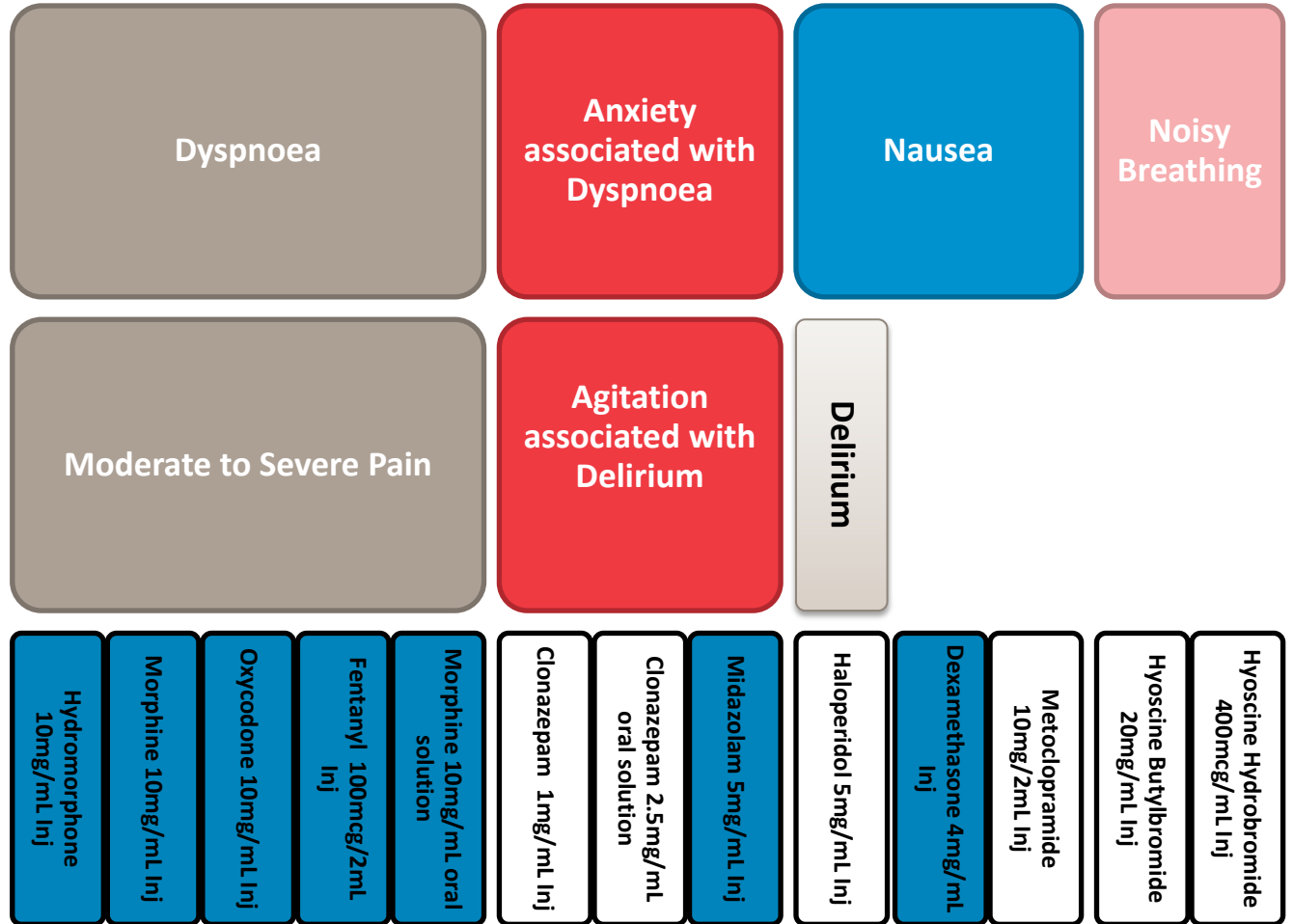


# If Unable To Provide Medicines

- > Predictor of contacting a prescriber:
  - Awareness of palliative care patients using the pharmacy



# Preparedness Score





# Preparedness Score

- > Predictors of a high preparedness score:
  - After-hours / on-call
  - Awareness of palliative care patients



## Discussion

- > Metropolitan vs rural areas?
- > Improved expiry dates
- > Multidisciplinary involvement
  
- > Prescriber preference



## Conclusion

- > Value in developing and promoting a defined list of medicines
- > Value in including community pharmacies ahead of time
- > Substantial work to achieve in rural areas

Twitter: @pallcarepharm

# The Approach To End-Of-Life Care: A Community Pharmacy's Perspective

Paul Tait, Chris Horwood, Paul Hakendorf,  
Timothy To

September 2015

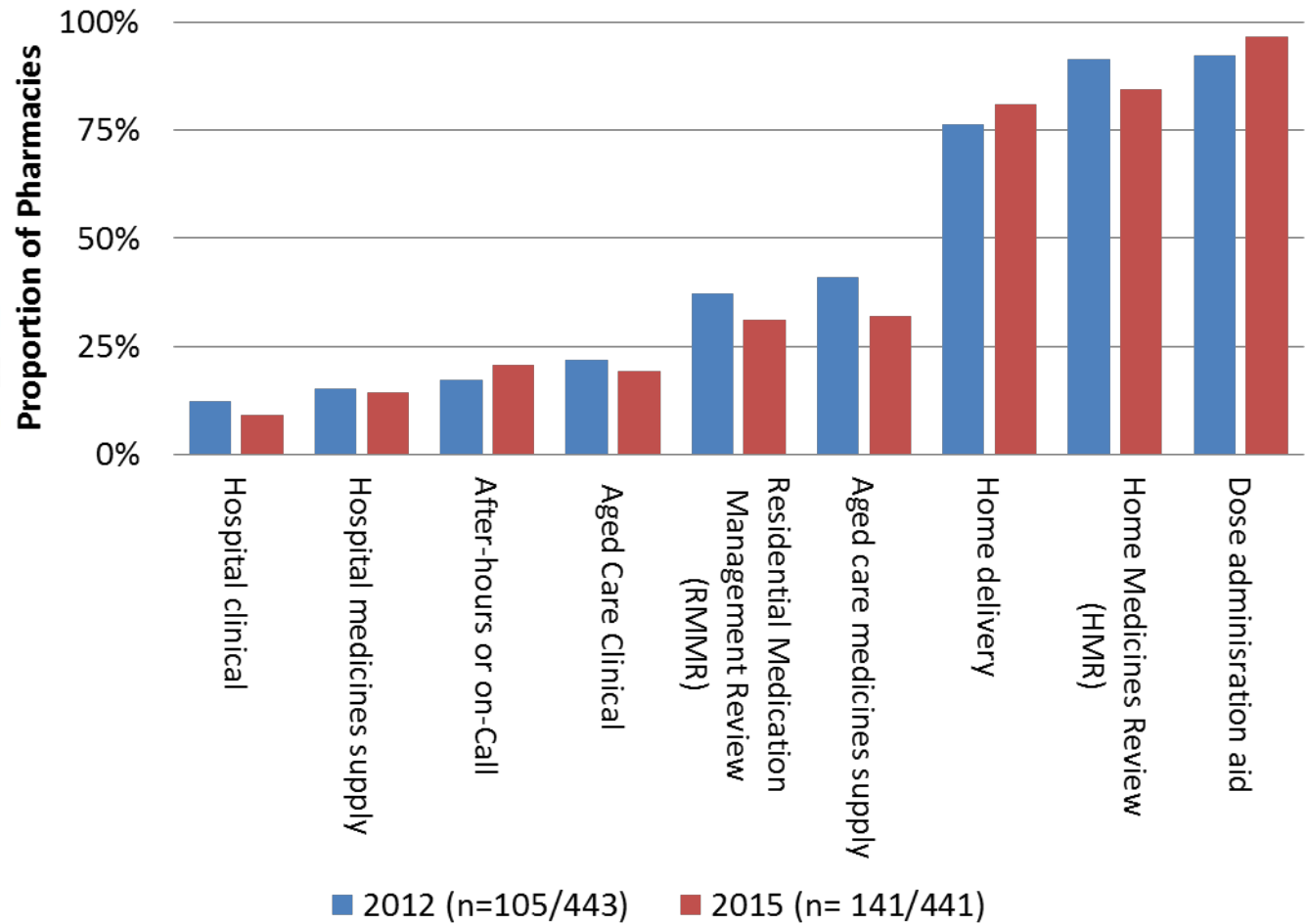


Government  
of South Australia

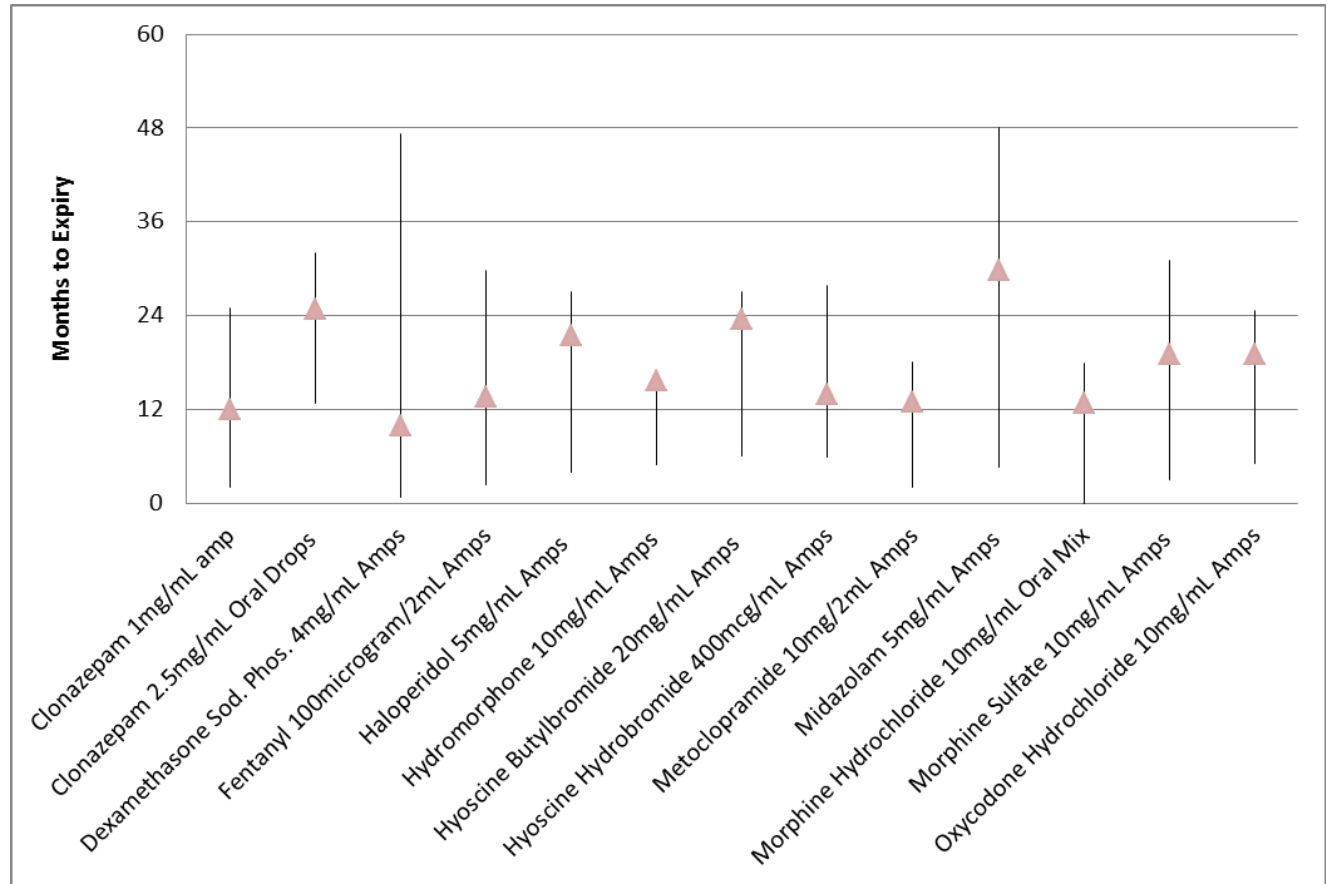
SA Health



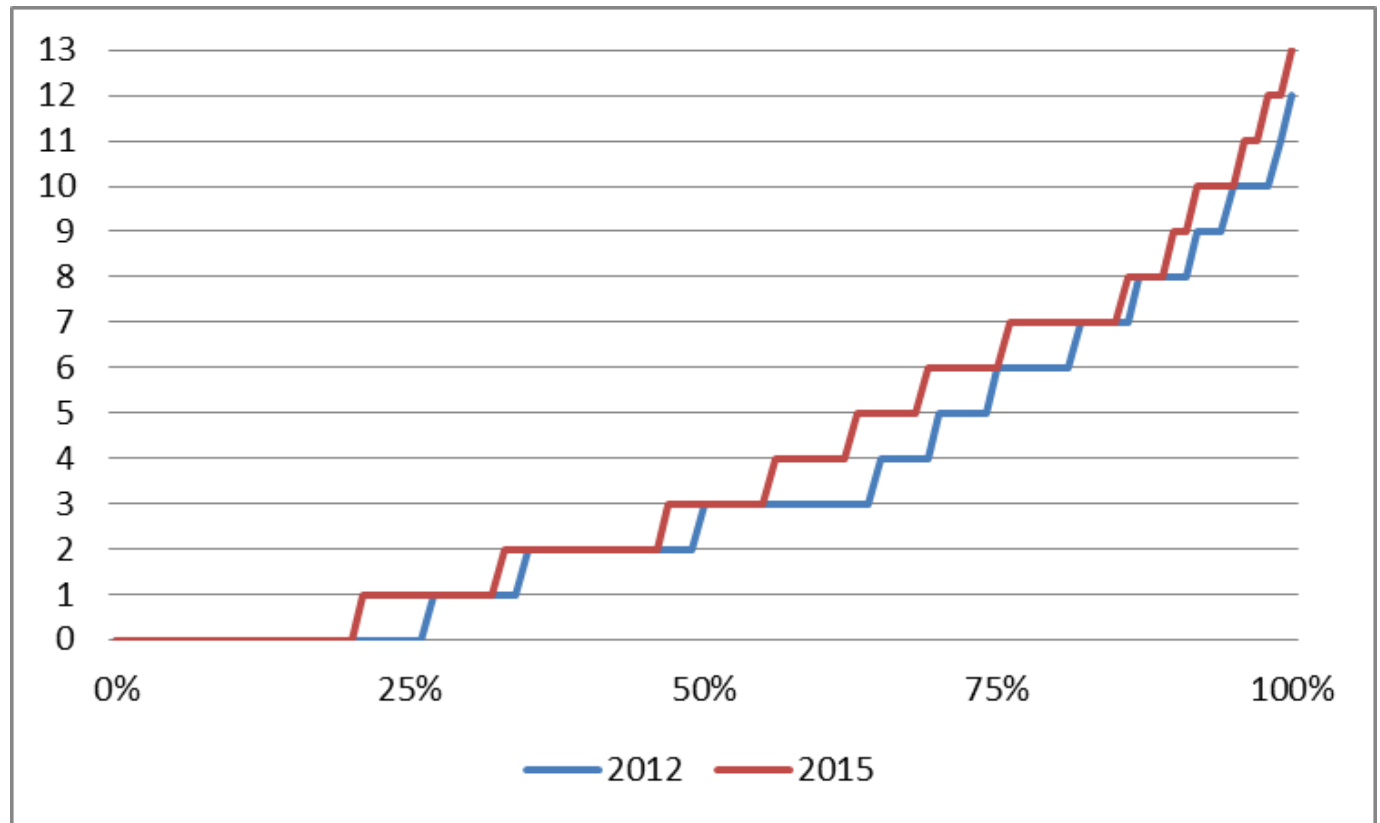
# Demographics



# Months to Expiry

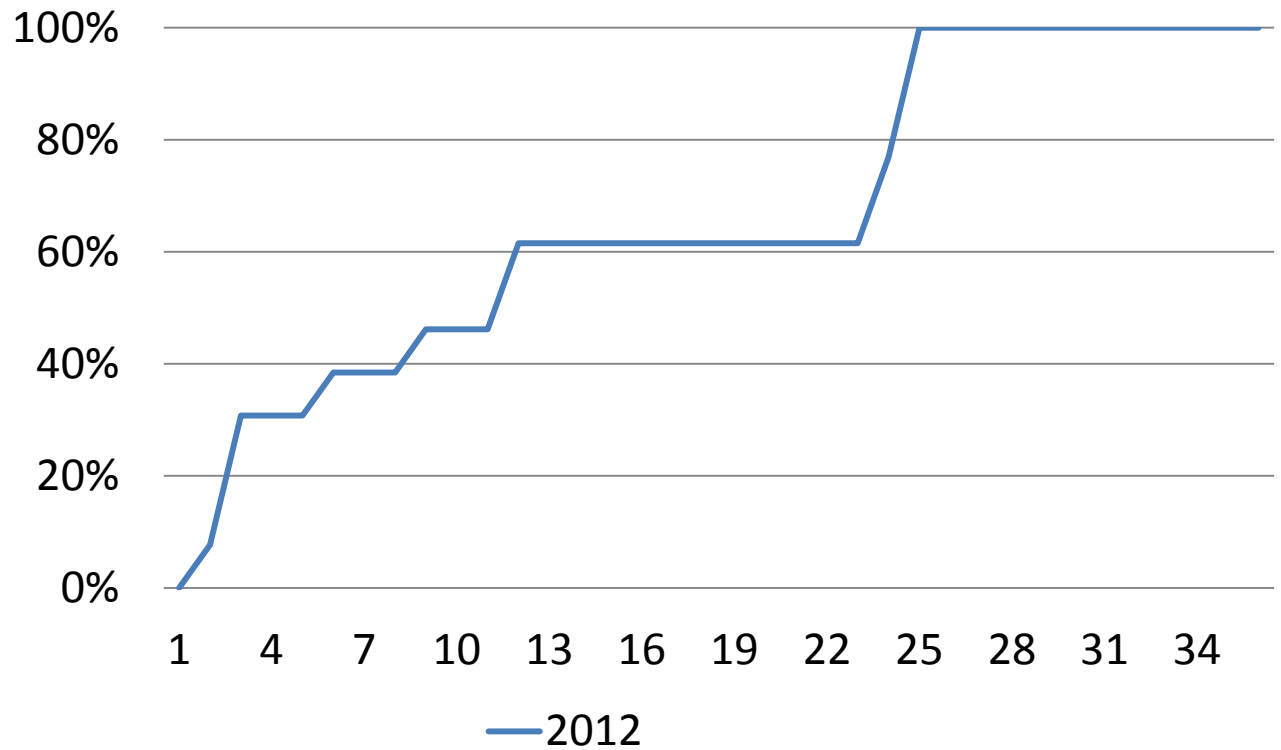


# Medicine Availability by Pharmacy





# Clonazepam Injection



# Clonazepam Injection

