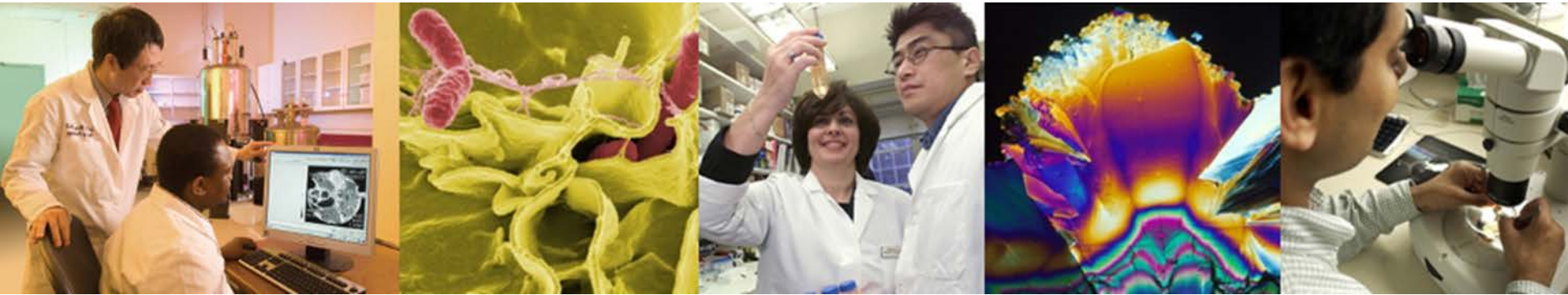


NIH-wide Strategic Plan

Webinar

August 5, 2015



Lawrence A. Tabak, DDS, PhD
Principal Deputy Director, NIH
Department of Health and Human Services

Cori Bargmann, PhD
Investigator, Howard Hughes Medical Institute
Torsten N. Wiesel Professor
Lulu and Anthony Wang Laboratory of Neural Circuits and Behavior
The Rockefeller University



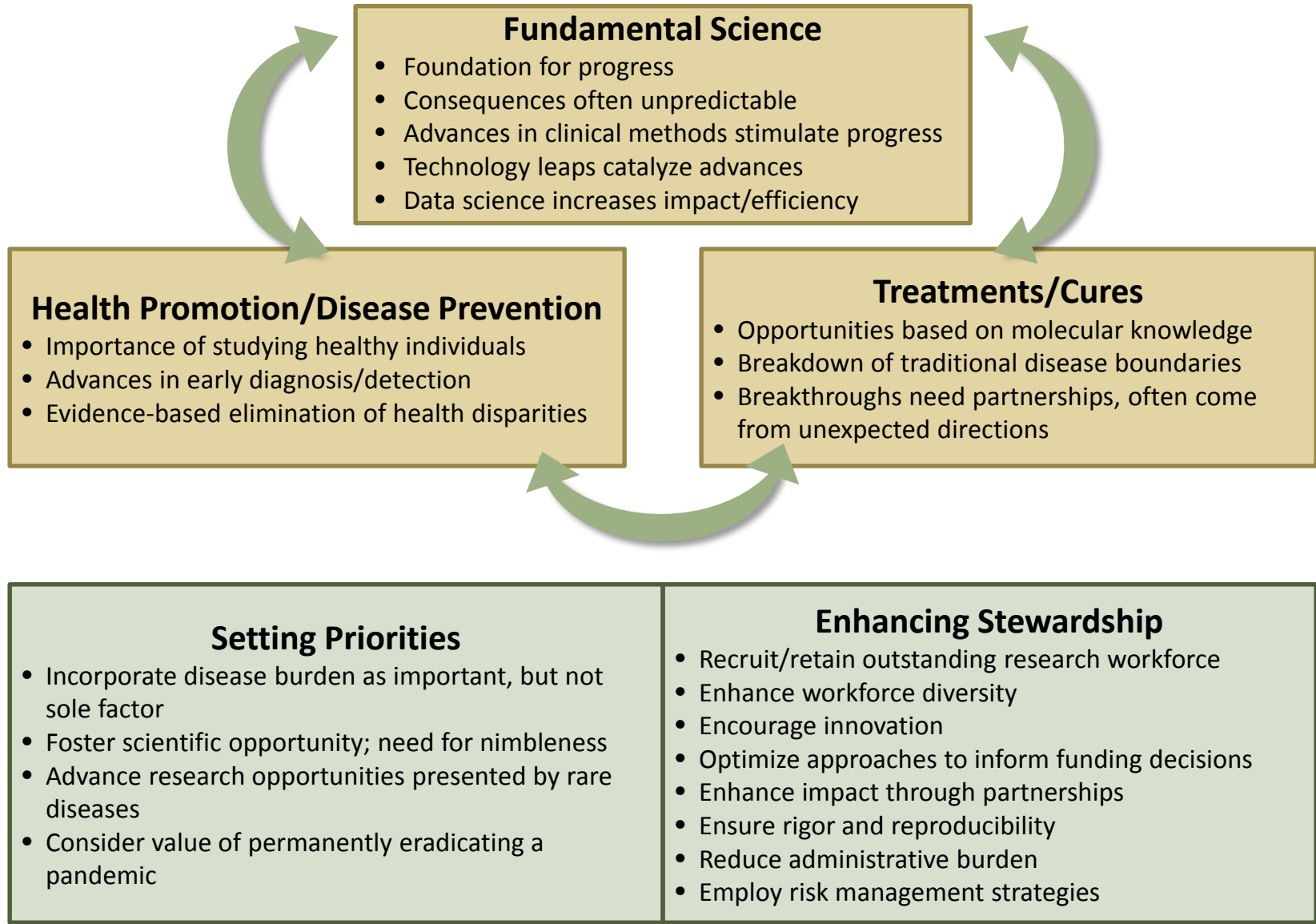
NIH-Wide Strategic Plan

Purpose

- Develop a 5-year plan that will guide NIH in fulfilling its mission
- Develop goals that are forward-looking and inspirational
- Advance the biomedical research enterprise by identifying major trans-NIH themes
- The plan is not meant to describe all of the research priorities of the individual ICO's

Overview

- Mission of NIH
- Unique moment of opportunity in biomedical research
- Current NIH-supported research landscape
- Constraints confronting the community in the face of lost purchasing power



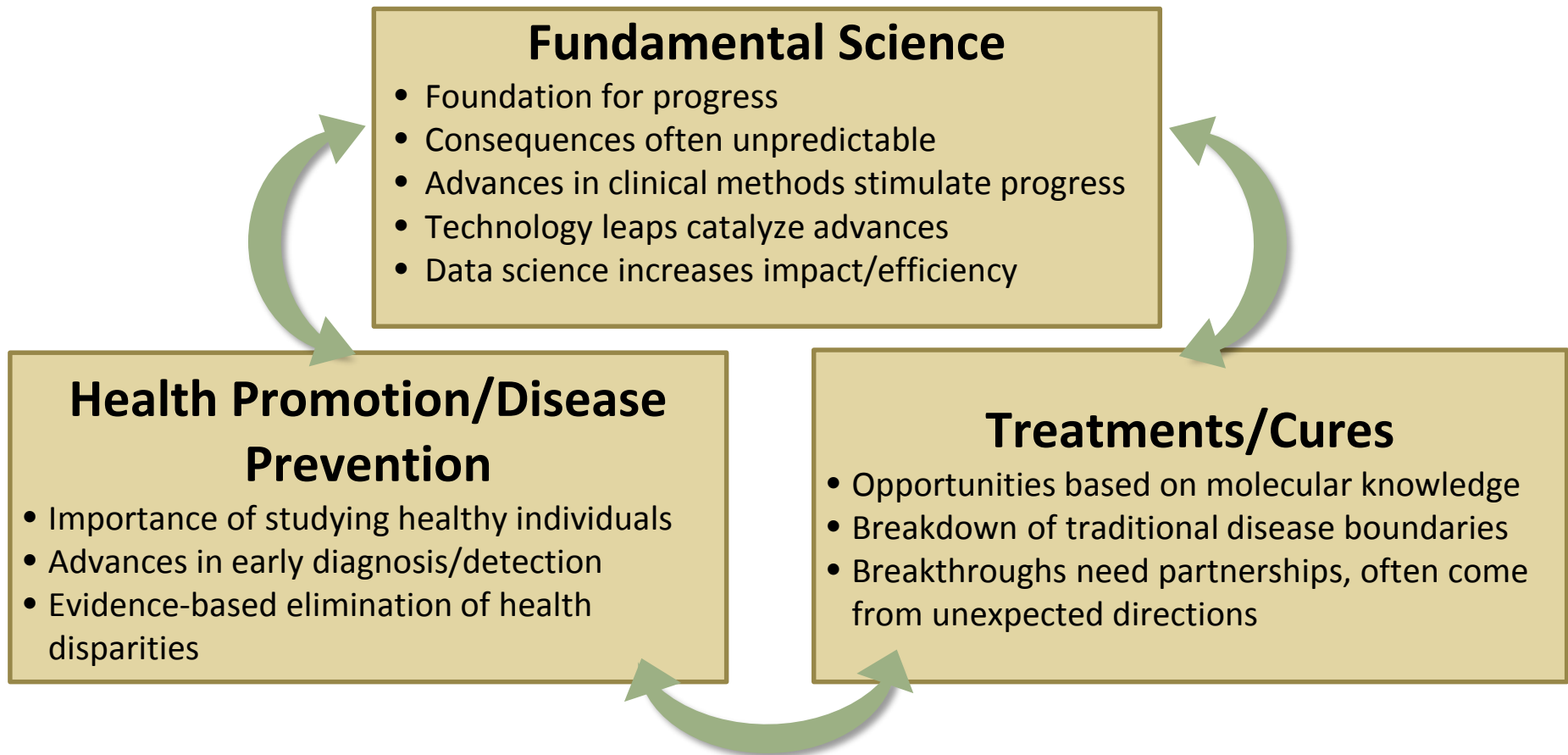
Draft Framework (cont'd)

Overview

- Mission of NIH
- Unique moment of opportunity in biomedical research
- Current NIH-supported research landscape
- Constraints confronting the community in the face of lost purchasing power

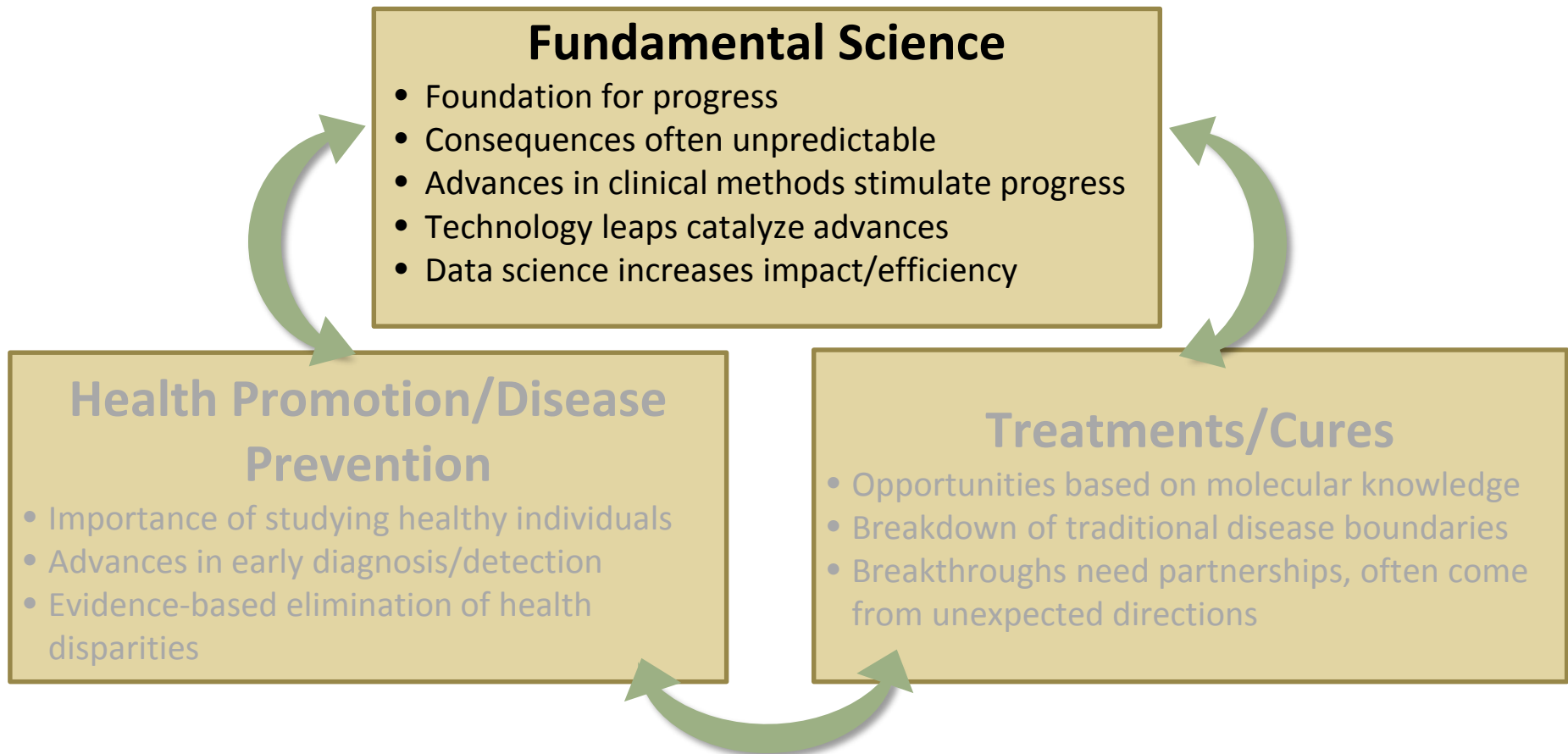
Draft Framework (cont'd)

■ Areas of Opportunity that Apply Across Biomedicine



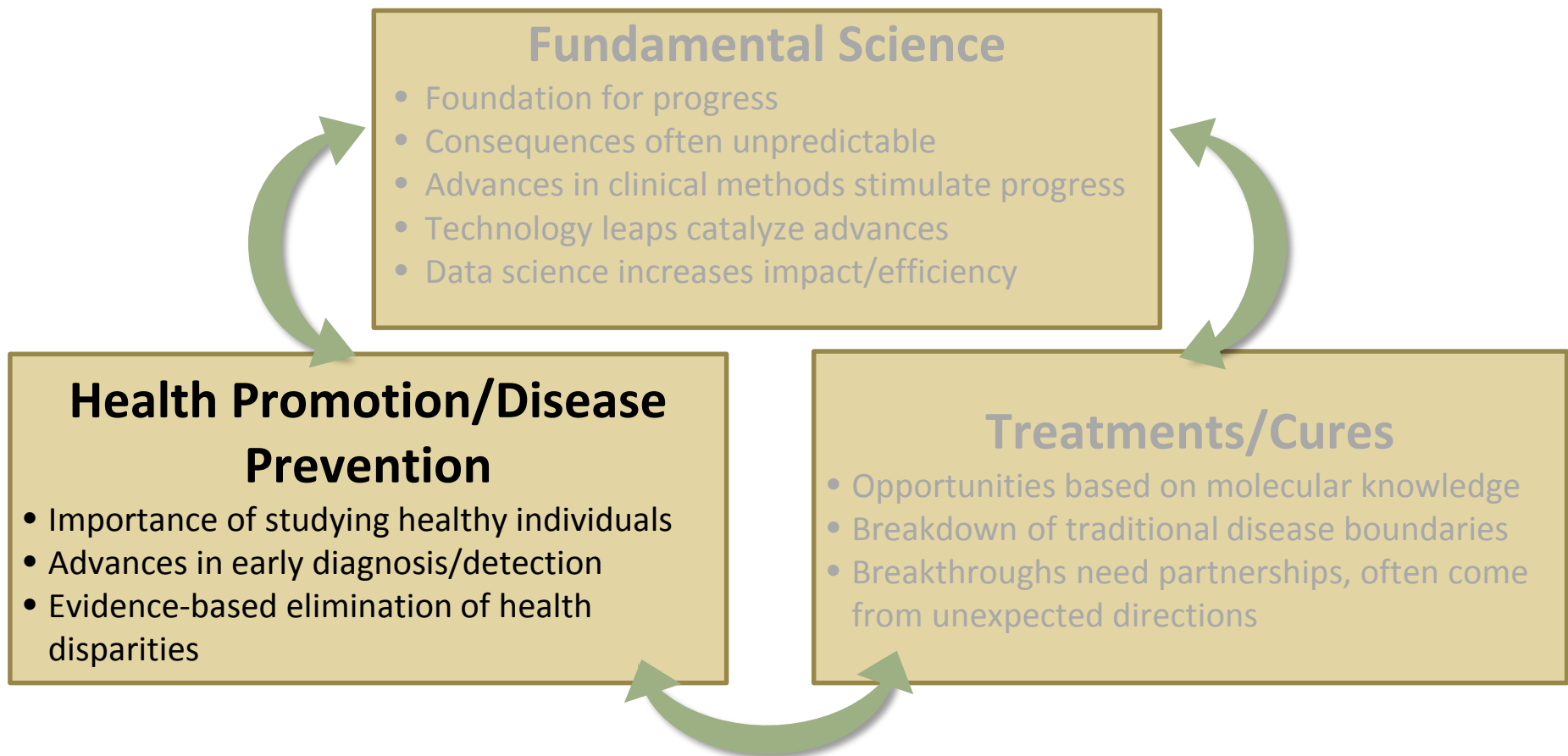
Draft Framework (cont'd)

■ Areas of Opportunity that Apply Across Biomedicine



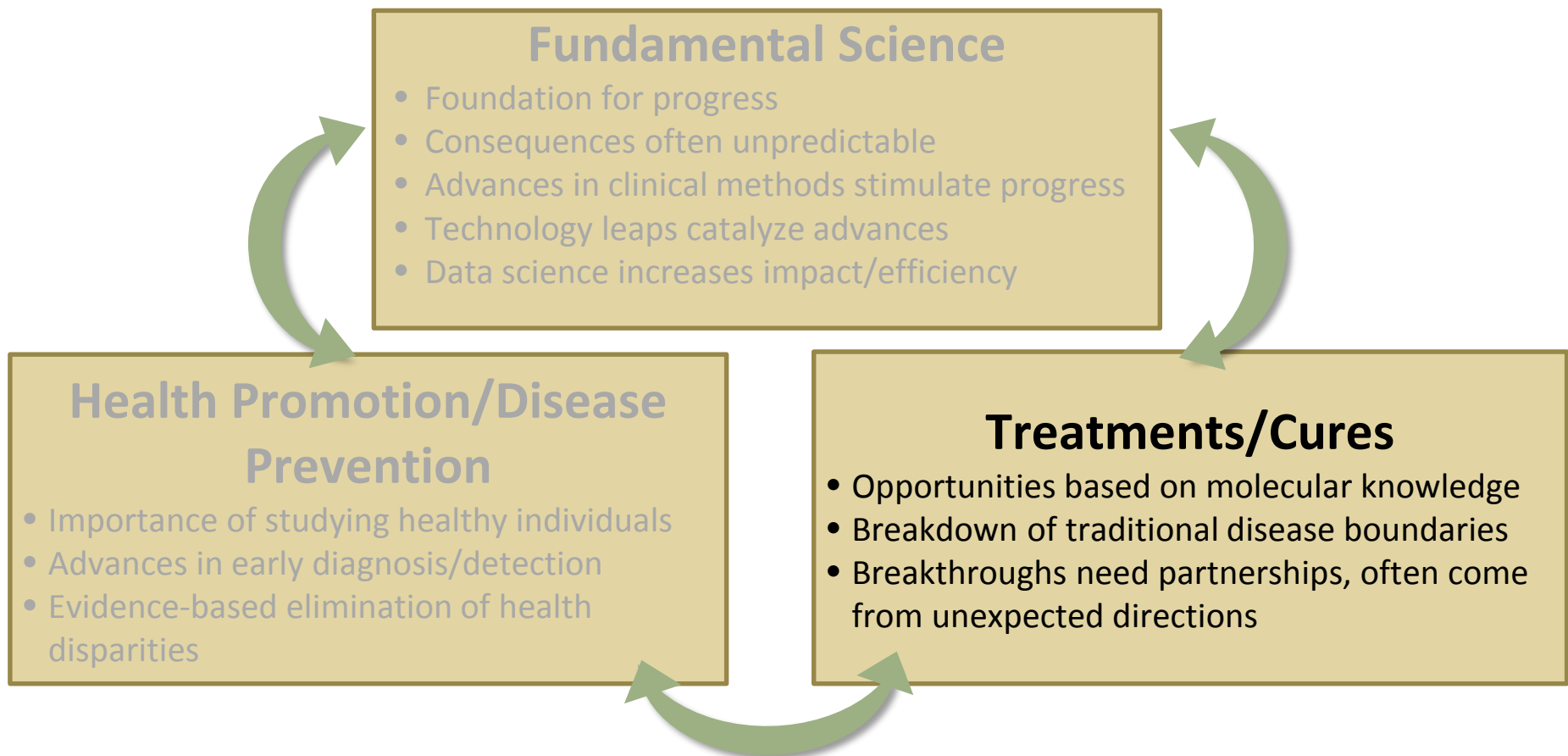
Draft Framework (cont'd)

■ Areas of Opportunity that Apply Across Biomedicine



Draft Framework (cont'd)

■ Areas of Opportunity that Apply Across Biomedicine



Draft Framework (cont'd)

■ Unifying Principles

Setting Priorities

- Incorporate disease burden as important, but not sole factor
- Foster scientific opportunity; need for nimbleness
- Advance research opportunities presented by rare diseases
- Consider value of permanently eradicating a pandemic

Enhancing Stewardship

- Recruit/retain outstanding research workforce
- Enhance workforce diversity
- Encourage innovation
- Optimize approaches to inform funding decisions
- Enhance impact through partnerships
- Ensure rigor and reproducibility
- Reduce administrative burden
- Employ risk management strategies

Draft Framework (cont'd)

■ Unifying Principles

Setting Priorities

- Incorporate disease burden as important, but not sole factor
- Foster scientific opportunity; need for nimbleness
- Advance research opportunities presented by rare diseases
- Consider value of permanently eradicating a pandemic

Enhancing Stewardship

- Recruit/retain outstanding research workforce
- Enhance workforce diversity
- Encourage innovation
- Optimize approaches to inform funding decisions
- Enhance impact through partnerships
- Ensure rigor and reproducibility
- Reduce administrative burden
- Employ risk management strategies

Draft Framework (cont'd)

■ Unifying Principles

Setting Priorities

- Incorporate disease burden as important, but not sole factor
- Foster scientific opportunity; need for nimbleness
- Advance research opportunities presented by rare diseases
- Consider value of permanently eradicating a pandemic

Enhancing Stewardship

- Recruit/retain outstanding research workforce
- Enhance workforce diversity
- Encourage innovation
- Optimize approaches to inform funding decisions
- Enhance impact through partnerships
- Ensure rigor and reproducibility
- Reduce administrative burden
- Employ risk management strategies



NIH...

Lawrence.Tabak@nih.gov

Turning Discovery Into Health

