

eLearning for eHealth at Mohawk College

Justin Fyfe

Software Architect & Instructor

Mohawk College of Applied Art and Technology

Mohawk College of Applied Arts and Technology

- Medium Sized College in Hamilton, Ontario Canada
 - ~10,000 Full-time students
 - ~1,000 International Student Enrollment
- Founded in 1966
- Specialization in Health and Technology
- Applied Research Centre started in 2007 in eHealth
 - First Applied Research Centre for eHealth in Canada

Whom Do We Teach?

- Three groups
 - Full-Time Post Secondary Students
 - Full-time (16-20 hrs/wk)
 - Ontario Advanced College Diploma credential in Software Development (3 yrs)
 - Continuing Education Students
 - Part-time after hours students (4 – 8 hrs/wk)
 - Ontario College Certificate (1 yr) or Post-Graduate Certificate (1 yr)
 - Professionals
 - 4 – 8 hour courses
 - Professional Development only, certificate currently under review



Materials

- Practical Systems
 - College has received \$1.8M for infrastructure supporting students
 - Complete IHE based infrastructure deployed on campus with ~12,000 fake patient records
 - IAHS (Nursing & MedRadSci school) source of this data
 - EMR package utilized is OSCAR (local project)

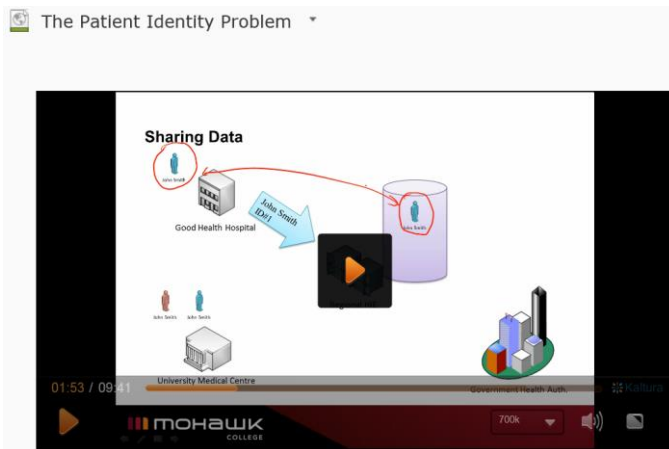


Methods

- Use “Lego brick” method for eHealth courses
 - Small self-contained topics that can be delivered, combined, repurposed easily.
- Course Delivery
 - College has a campus-wide LMS (Desire2Learn)
 - Lecture Capture & Smart Board Capture done via Panopto & Kaltura
 - Synchronous lectures also done via Google Hangouts & Webex
- Post Secondary / CE
 - Offered as “blended learning”
 - Mix of in-person, and synchronous online delivery
 - Evaluations: Project based & lab work
- Professional
 - Offered as wholly asynchronous online learning
 - Series of 10 - 15 minute videos followed by 5 minute quiz
 - 4 hours of content.

Sample “Lego Brick” Courseware

Video / Saved Webcasts



Reading Assignments

Reading Assignment : ITI TF Volume 2

Purpose

This reading assignment seeks to improve the reader's understanding of the *IHE IT Infrastructure Technical Framework Volume 2* verbiage and layout. Its primary objective is to allow the reader to gain an understanding of the *Patient Identity Feed (ITI-8)* transaction for HL7 from a technical perspective.

Task

Read the IT Infrastructure Technical Framework Volume 2 document (http://ihe.net/uploadedFiles/Documents/ITI/IHE_ITI_TF_Vol2a.pdf) focusing on section 3.8. Pay careful attention to the following:

- Section 3.8.4.1.1 Trigger Events
- Section 3.8.4.1.2.3 PID Segment definition
- Section 3.8.4.1.3 Expected Actions of the PIX manager

Additional Reading

The IT Infrastructure Technical Framework Volume 2 document (http://ihe.net/uploadedFiles/Documents/ITI/IHE_ITI_TF_Vol2b.pdf) identifies a transaction named "Patient Identity Management" or ITI-30. While the actors involved in PIX and PDQ are not required to implement the messages listed in this transaction, it does provide very detailed documentation about the common message segments used for PIX and PDQ actors and transactions (ITI-8, ITI-9, ITI-10, ITI-21).

Quizzes / Question Banks

Question 1 (4 points)

Match the actors and transactions from the diagram with the appropriate letter

<input type="checkbox"/>	Patient Identity Consumer	1. [1]
<input type="checkbox"/>	ITI-8	2. [2]
<input type="checkbox"/>	Patient Identity Source	3. [3]
<input type="checkbox"/>	ITI-9	4. [4]

What do we teach? (Subset)

Topic	Post Secondary / CE	Professional
Services Oriented Architecture	Level 2	Level 0
Terminologies	Level 2	Level 1 – 3
Privacy	Level 0	Level 1 – 3
Security	Level 1	Level 1 – 3
Standards Fundamentals	Level 2	Level 1
HL7 Version 2	Level 2	Level 2
HL7 v3 & pCS	Level 2	Not Offered
CDA	Level 1	Level 2 & 3
Integrating the Health Enterprise	Level 1	Level 2
XDS Infrastructure	Level 2	Level 3
XDS for Imaging	Level 2	Level 3
...