



Our Global Clientele in 35+ Countries



N. Dash © 0141-2221991, +91-98292 31611



THE FACE OF NATURE  
THE SPIRIT OF SCIENCE

## Umalaxmi Organics Pvt. Ltd.

### HEADQUARTERS

F245-249, Agro Food Park, Boranada Industrial Area, Jodhpur-342012, Rajasthan, INDIA

### CORPORATE OFFICE

701-703, Siddhartha Complex, R.C. Dutt Road, Alkapuri, Vadodara-390007, Gujarat, INDIA

Phone: +91 265 2351536, 2326019 | Mail: [info@umalaxmi-organics.com](mailto:info@umalaxmi-organics.com)

PLEASE NOTE: THE MATERIAL ON THIS BROCHURE IS PROVIDED FOR INFORMATIONAL PURPOSES ONLY AND IS NOT MEDICAL ADVICE.  
ALWAYS CONSULT YOUR PHYSICIAN BEFORE BEGINNING ANY DIET OR EXERCISE PROGRAM



## VISION

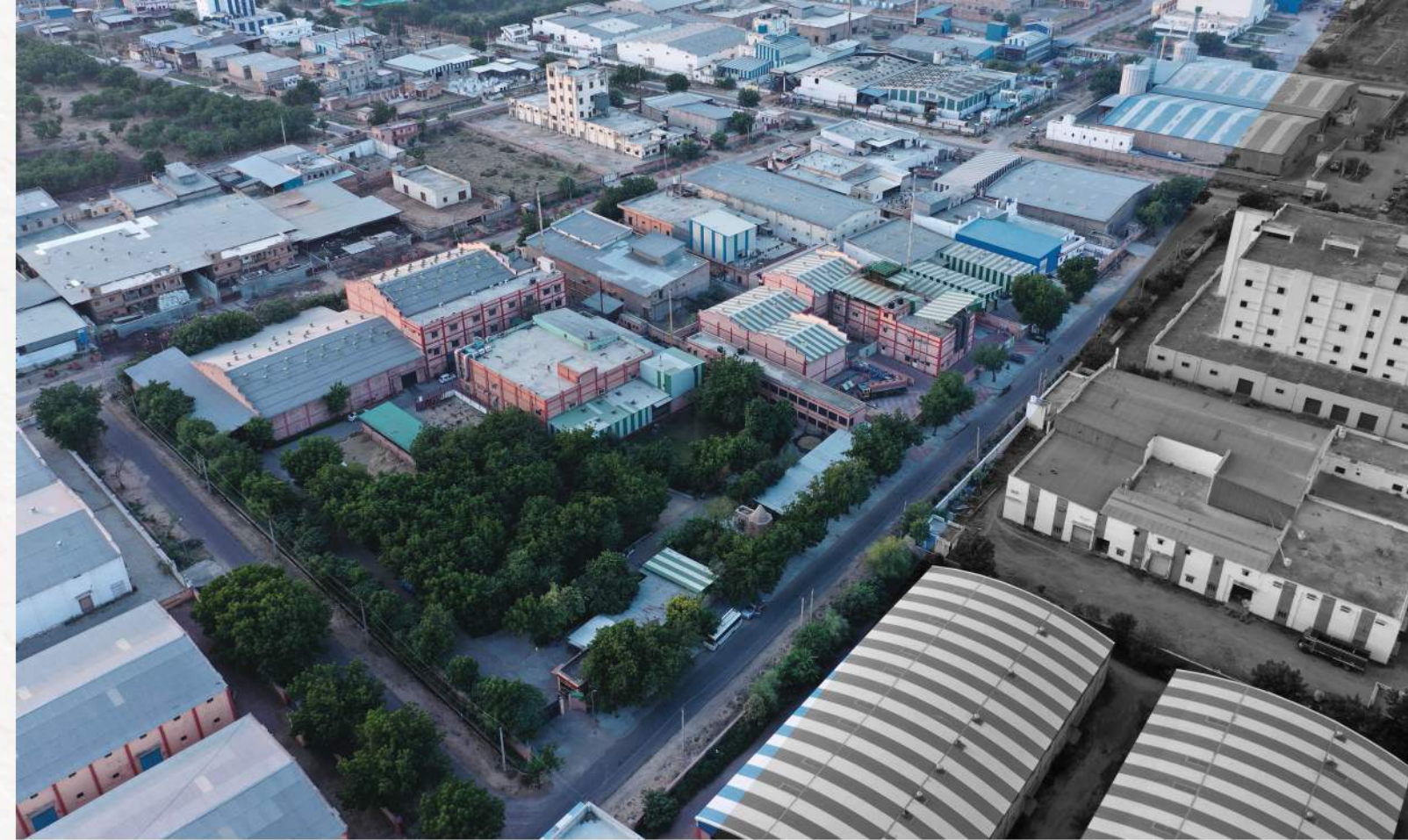
- To be a market leader providing superior quality herbal products connecting lives with nature.

## MISSION

- Promoting sustainable and continuous innovative practices in providing affordable Botanical extracts.
- Maintaining ethical business practices.

## HOW UMALAXMI STANDS DIFFERENT ?

- ISO, GMP, HACCP, STAR K KOSHER, HALAL, RFA, BRC & FSMA CERTIFIED
- Huge Manufacturing over an area of 750,000sqft
- CO2- SCFE manufacturing facility
- 20+ years' Experience
- Expanded Manufacturing with Essential Oil
- Separate Warehousing units for Bulk Storage for Raw material and Finished products
- On-Time Delivery
- Impeccable customer support
- Stock availability in the USA and India
- 3000 farmers' connectivity
- Wild collection of herbs from tribals in 14000 hectares of land



## ABOUT US

Umalaxmi Organics Pvt. Ltd. is a quality-driven direct manufacturer and 100% exporter of Botanical extracts in India. We are a major producer of solvent and aqueous extracts for Essential Oils and Extracts in the South East Asian region, which also includes CO2-extracted SCFE technology. Umalaxmi boasts of 3 manufacturing plants covering a massive 750,000sqft. of production and storage space, with a monthly output capacity of more than 375mt. We cater to Health Functionals Foods, Pharmaceuticals, Food & beverages, Cosmetics, Dietary Supplements, Nutraceuticals, and Animal Feed Industries.

## OUR VALUES

Knowledge

Efficacy

Sustainability

Partnership







## COMPANY PROFILE



### LABORATORIES

- Meeting Standards as per USP, BP, JP, KFDA, TGA norms
- Equipped with HPLC, UV, GC and In-house Microbiology labs
- Modern and Greener latest technology

### MANUFACTURING

- Manufacturing facility with 3 plants over 750,000 sq. ft
- High standards of safety, quality and consistency



### STRENGTH

- CO<sub>2</sub> Extracted SCFE unit
- Separate Unit for Ethanolic and Aqueous Extraction
- Strong Leadership with +250 Dedicated Manpower
- R & D team of 23 Drs, Researchers and Innovators



## Ashwagandha Extract

### Grades

Upto 2.5% withanolides by HPLC,  
Upto 8% withanolides by Gravimetry

### Uses

May promote Vigor & Vitality  
May be Adaptogenic



## Bacopa Extract

### Grades

45% Bacosides by HPLC

### Uses

May Promote Cognitive Health



## Bromelain Extract

### Grades

Upto 3000 gdu/g

### Uses

May Support Digestive Health



## Amla Extract

### Grades

Upto 45% total Hydrolyzable Tannis by titration  
Upto 45% Polyphenols by UV

### Uses

May promote Anti-Oxidation effect  
May support Immunity



## Boswellia Serrata Extract

### Grades

65%, 85% Boswellic Acid by Titration,  
20%, 30% Beta Boswellic Acid by HPLC  
90% AKBA by HPLC  
65% to 70% Granules

### Uses

May Support Joint Health



## Black Cumin Extract

### Grades

6% Thymoquinone

### Uses

May Support Anti Inflammation







## Banaba Extract

### Grades

1%, 2% Corosolic acid by HPLC

### Uses

May Support Blood Sugar Health



## Cissus Extract

### Grades

5%, 10%, 20%, 40% Total Keto steroids by Gravimetry

### Uses

May Support Bone Health, Lower Cortisol Levels



## Garcinia Cambogia Extract

### Grades

Upto 70% Water Soluble HCA  
Upto 75% Water Insoluble HCA by HPLC  
Upto 60% Granules

### Uses

May Support Weight Management



## Guggul Extract Commiphora Mukul

### Grades

2.5% Guggulsterones by HPLC,  
10% Guggulipids by Gravimetry

### Uses

May Promote Bone And Heart Health



## Coleus Extract

### Grades

10%, 20% Forskolin  
by HPLC

### Uses

May support Heart Health



## Curcumin Extract

### Grades

Upto 50% water soluble (CWD)  
Upto 95% Total Curcuminoids by HPLC  
Upto 95% Granules

### Uses

May Promote Anti Oxidation Effects



## Gymnema Extract

### Grades

Upto 75% Gymnemic Acids  
by Gravimetry  
25% Gymnemagenin by HPLC

### Uses

May Support Blood Sugar And Heart Health



## Green Coffee Bean Extract

### Grades

45%, 50%, 60% Total Chlorogenic Acids by HPLC  
Upto 55% Polyphenols by UV  
Caffeine less than 2% , 5% by HPLC

### Uses

May Promote Weight Loss & Skin Health



## Fenugreek Extract

### Grades

Upto 60% Steroidal Saponins by Gravimetry, 30% Diosgenin by HPLC

### Uses

May Support Blood Sugar Health



## Ginger Extract

### Grades

5%, 10% Gingerols  
by HPLC

### Uses

May support Anti- Inflammation  
effect and Analgesic



## Green Tea Extract

### Grades

Upto 50% Epigallocatechin Gallate (EGCG) by HPLC,  
Upto 95% total Polyphenols

### Uses

May Promote Anti-Oxidation effects



## Guava Leaf Extract

### Grades

Upto 30% Polyphenols

### Uses

May Support Weight Management





## Gingko Biloba Extract

### Grades

Total Flavon of Glycosides 24%

### Uses

May Support Blood Circulation and Cognitive Functions



## Milk Thistle Extract

### Grades

Total Silymarin 50% by HPLC, 80% by UV

### Uses

May Promote Healthy Liver Function



## Triphala Extract

### Grades

Upto 45% Tannins by Titration

### Uses

May Promote Weight Management



## Tribulus Extract

### Grades

20%, 40% Steroidal Saponins by Gravimetry, 20% Protodioscin by HPLC

### Uses

May Promote Sexual Health



## Natural Caffeine Extract

### Grades

Upto 99% Caffeine by HPLC

### Uses

May Promote Mental Alertness



## Pomegranate Extract

### Grades

45% Ellagic Acid by UV, 20%, 60% Polyphenols by UV

### Uses

May Promote Anti-oxidation Effect, Control Free Radicals



## Umarigold (Lutein) Extract

### Grades

5%, 10%, 20%, 40%, 80% by HPLC ( Water soluble/ Beadlets / Granules )

### Uses

May Support Eye Health



## Valerian Officinalis Extract

### Grades

0.3%-0.8% Valerenic acid by HPLC

### Uses

May Promote Good Sleep



## Saw Palmetto Extract

### Grades

23% to 28% Lauric Acid

### Uses

May Support Mens Health



## Senna Extract

### Grades

Upto 60% Sennosides by HPLC/USP/BP/EP

### Uses

May Serves As Natural Laxative



## White Kidney Bean Extract

### Grades

Upto 20,000 AAI units

### Uses

May Boost Metabolism, May Promote Weight Management



## Yohimbine Extract

### Grades

8% to 97% Yohimbine HCL

### Uses

May Promote Sports Performance



## PRODUCT LIST

Extract	Specification
Acacia Catechu Extract	90% Catechin
Aegle Marmelos (Bael) Extract	Upto 10% tannin by Titration
Aloe Vera extract	200 : 1, NLT 25% Polysaccharides
Alpinia Galangal	Upto 4% Flavonoids
Andrographis Paniculata Extract	10%, 50% Andrographolides by HPLC
Arjuna Extract	10%, 20% Tannin by Titration, 0.5% Arjunolic acid by HPLC
Ashwagandha Extract	Upto 2.5% Withanolides by HPLC, Upto 8% Withanolides by Gravimetry
Astaxanthin Extract	2%-5% (Powder), 5%-10% (Oil)
Bacopa Extract	45% Bacosides by HPLC
Bamboo Extract	Upto 75% Silica
Banaba Extract	1%, 2% Corosolic Acid by HPLC
Bauhinia Purpurea Extract	20% Tannin by Titration
Berberis Aristata Extract	98% Berberine by HPLC
Bitter Melon Extract	3%, 10%, 12% Bitter by Gravimetry
Black Cumin Extract	6% Thymoquinone
Black Pepper Extract	2%, 95% Piperine by HPLC
Boerhavia Diffusa Extract	2%, 10% Bitters by Gravimetry +ive for Alkaloids
Boswellia Serrata Extract	Upto 95% Boswellic Acids by Titration, Upto 45% Beta Boswellic Acids by HPLC, 30%, 90% AKBA by HPLC, 60% - 70% Granules
Bromelain Extract	Upto 3000 gdu/g
Caralluma Fimbriata Extract	Upto 20% Pregnane Glycosides by HPLC, 10%, 20%, 40% Glycosidic Saponins by Gravimetry
Carica Papaya Extract	90% Papain, 2% Polyphenols
Cassia Fistula Extract	20% Sennosides by UV
Centella Asiatica(Gotu Kola) Extract	Upto 10, 20, 95% Triterpenes/ Asiaticosides
Cinnamon Extract	Upto 20% Polyphenols by UV
Cissus Extract	5%, 10%, 20%, 40% Total Keto-steroids by Gravimetry
Coleus Extract	10%, 20% Forskolin by HPLC
Convolvulus Prostratus (Shankhpushpi) Extract	2.5% Alkaloids
Curcumin Extract	Upto 50% water soluble (CWD), Upto 95% Total Curcuminoids by HPLC, Upto 95% Granules

## PRODUCT LIST

Extract	Specification
Curry Leaf Extract	10:01
Deglycyrrhizinate Liquorice Extract	NMT 3% Glycyrrhizin by Gravimetry
Fenugreek Extract	Upto 60% Steroidal Saponins by Gravimetry, 30% Diosgenin by HPLC
Garcinia Cambogia Extract	Upto 70% Water Soluble HCA, Upto 75% Water Insoluble HCA by HPLC, Upto 60% granules
Garcinia Mangostana Extract	a - Mangostin 10% to 20% by HPLC
Garlic Extract	1% Allicin
Ginger Extract	5%, 10% Gingerols by HPLC
Grape Seed Extract	Up to 95% Polyphenols by UV, 95% PAC by UV
Green Coffee Extract	55% Polyphenols by UV, Orac Hydro value above 6000, 7000 umol TE/gm, upto 60% total Chlorogenic acid by HPLC
Green Tea Extract	Upto 50% Epigallocatechin Gallate (EGCG) by HPLC, Upto 95% total Polyphenols
Griffonia simplicifolia Extract	Upto 98% 5-HTP
Guava Leaf Extract	Upto 30% Polyphenols
Guggul Extract	2.5% Guggulsterones by HPLC, 10% Guggulipids by Gravimetry
Gymnema Extract	Upto 75% Gymnemic Acids by Gravimetry; 25% Gymnemagenin by HPLC
Hemidesmus Indicus Extract (Sarasparilla)	10% Saponins by Gravimetry
Holy Basil (Tulsi) Extract	10%, 20% Tannins by Titration, 2.5% Ursolic Acid by HPLC
Java Tea (Orthosiphon stamineus) Extract	0.2% sinensetin
Lemon Peel Extract	5% Folic Acid
Liquorice Extract	10%, 20% Glycyrrhizic Acid
Moringa Oleifera Extract	20%, 60% Protein, 10:1 Extract
Mucuna Pruriens Extract	Upto 50% L-dopa by HPLC
Mulberry Leaf Extract	10:1 Extract ratio
Myristica Fragrans(Nutmeg) Extract	5:1 Extract
Natural Caffeine Powder Extract	Upto 99% caffeine by HPLC
Neem Extract	Upto 7.5% Bitters by Gravimetry



## PRODUCT LIST

Extract	Specification
Noni Extract	Upto 30% Polysaccharides, 20%, 40% Saponins by Gravimetry
Papain Extract	2000 USP
Passiflora Incarnata Extract	50:1, 1% bioflavonoids, 4:1, 4% Flavones
Phyllanthus Amaras/ Niruri Extract	2%, 10%, Bitters by Gravimetry, 5% Corilagin by HPLC
Pomegranate Extract	45% Ellagic Acid by UV, 20%, 60% Polyphenols by UV
Psyllium Husk Whole and Powder	80%, 85%, 95%, 99%
Rosmarinic Officinalis Extract	3%, 5% Rosmarinic Acid HPLC, 25% Ursolic Acid HPLC
Safed Musli Extract	20%, 50%, 70%, Saponins by Gravimetry
Salacia Reticulata Extract	20% Saponins by Gravimetry
Senna Extract	Upto 60% Sennosides by HPLC/USP/BP/EP
Shatavari Extract	25%, 50%, Saponin by Gravimetry
Shilajit Extract	Upto 20% Fulvic Acid by Gravimetry
Stevia Extract	Stevioside NLT 30% by HPLC, Steviol Glycosides 90% and 95%
Terminalia Bellerica (Baheda) Extract	Upto 25% Tannins by Titration
Terminalia Chebula (Harde) Extract	Upto 40% Tannins by Titration
Tinospora Cordifolia (Guduchi) Extract	2.5%, 5% Bitters by Gravimetry
Tribulus Terrestris Extract	20%, 40% Steroidal Saponins by Gravimetry, 20% Protodioscin by HPLC
Triphala Extract	Upto 45% Tannins by Titration
Valerian Officinalis Extract	0.3% - 0.8% Valerenic Acids by HPLC
Vijaysar Extract	5% Pterostilbene by HPLC
White Kidney Bean Extract	Upto 20,000 AAI unit
Yohimbe Bark Extract	8%-97% Yohimbine HCL
Zeaxanthin Powder	Upto 60% by HPLC

## PHYTOCHEMICALS

- Phytochemicals in Greek, phyto meaning "plant" are chemicals produced by plants through primary or secondary metabolism.
- Phytochemicals are a wide variety of non-nutritive chemical substances that are present in plant foods and may have health effects.

## PRODUCTS







## SUPERCritical EXTRACTION

Umalaxmi owns a next-generation non-toxic, SCFE technology-based CO<sub>2</sub> extraction plant that produces superior-quality extracts.

**JASMINE OIL**  
(Sambac Concrete) CO<sub>2</sub>  
(Coming Soon)



## SCFE CO<sub>2</sub> Extracts and Oils

- Amla
- Andrographis Paniculata
- Ajwain
- Bacopa Monnieri
- Beta Carotene
- Black Cumin
- Indian Frankincense
- Fenugreek
- Cardamom
- Carrot Seed
- Celastrus Paniculatus
- Centella Asiatica
- Chili
- Cinnamon Bark
- convolvulus
- Coriander
- Cyprus
- Fenugreek
- Fennel Seed
- Ginger
- Hemidesmus Indicus
- Lutein
- Moringa Seed
- Neem Leaf
- Pomegranate
- Turmeric
- Valerian
- Zingiber Officinale

## CORPORATE SOCIAL RESPONSIBILITY

At Umalaxmi, we believe in giving back to our society. We acknowledge our Corporate Social Responsibility (CSR) and are committed to environmental protection, social responsibility and economic sustainability.



We are working with Chetna Foundation, Bilaspur, Himachal Pradesh, India for uplifting intellectual disabled children by developing school facilities and other promotional camps for children

We have joined hands with various non profit organizations for providing health & social support to Rajasthan communities especially to women through:

- ➔ Developing water resources reducing water transport
- ➔ Reducing health problems from smoke inhalation
- ➔ Providing village education improving school services
- ➔ Providing additional hospital access services

## EXHIBITIONS

We Visit & Exhibit in:

- Bio Taiwan
- CPHI Worldwide
- HI Japan
- Natural Product Expo West
- Supply side East & West
- Vita foods, Asia/Fl Asia
- Vita foods, Geneva

