



# DISCOVER THE POWER OF CONTRACTOR DATA MANAGEMENT





# TAKE CONTRACTOR DATA MANAGEMENT TO THE NEXT LEVEL

Today's manufacturing, industrial and mining sites often approach contractor data management by trapping valuable spend data inside a web of data silos and manual systems.

On a typical industrial and mining site, contractor labour, equipment, and material costs are estimated, decisions are made in the dark, and crucial data is spread across multiple systems. Sound familiar? With myTrack, you can measure, track, and make informed decisions about your routine maintenance, shutdowns, turnarounds, outages, and capital projects in one place.

With real-time insight into your relationship with contractors, you become more contract-compliant, ensuring hours and dollars are calculated and allowed in real-time, then updated to your enterprise resource planning (ERP) system. Contractors get paid accurately and on time, with labour and hours validated through access control and gated systems.

Get ready to streamline back-office processes and support greater overall productivity, jobsite safety, spend visibility, and build stronger contractor relationships.

# STAY CONNECTED & INFORMED WITH REAL-TIME DATA



Measure, track, and make informed decisions about your routine maintenance, shutdowns, turnarounds, outages, and capital projects in one place.

# BENEFITS

- **ALWAYS KNOW WHO IS ONSITE**

In today's fast-paced business environment, having real-time visibility into your contractor workforce is crucial. myTrack allows companies to monitor contractor activities, track progress, and make informed decisions.

- **ELIMINATE OVERBILLING & MITIGATE RISK**

myTrack automatically enforces contract terms and conditions, enabling companies to eliminate risk and non-compliant charges before payment is made.

- **PAY CONTRACTORS WITH CONFIDENCE**

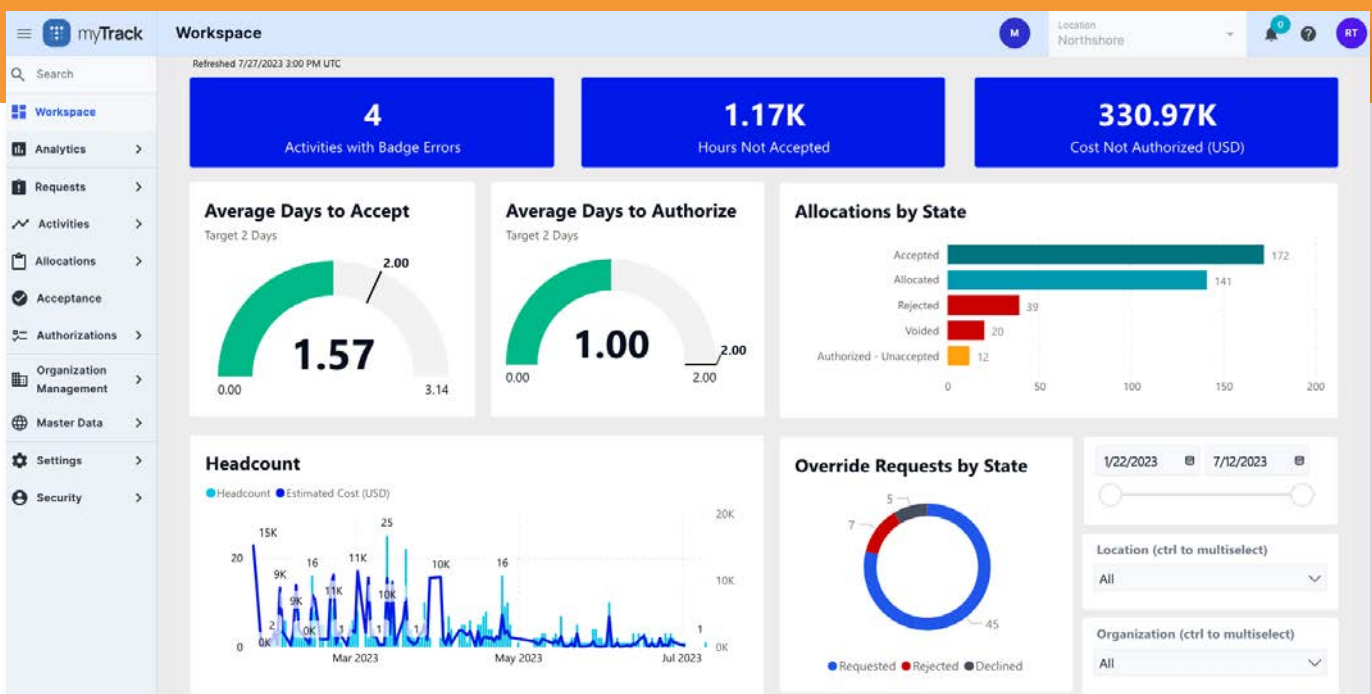
Take the guesswork out of project spend with an automated process to control, manage, and reduce contractor labour, equipment, and material spend.

- **MANAGE YOUR GLOBAL WORKFORCE**

As companies operate globally, managing a diverse and dispersed contractor workforce can be challenging. myTrack's centralised platform allows for seamless coordination, standardisation, and management across different locations.

- **MAKE DATA-DRIVEN DECISIONS**

Data is the new gold. myTrack's real-time data insights enable companies to make informed decisions based on accurate information, leading to better decisions about future projects, budget allocations, contracting strategies, and contractor performance evaluations.





## Why myTrack?



**Personalised User Experience** | myTrack's modern look and feel means a more efficient, improved overall user experience – plus a faster daily settlement process with reduced clicks and quick access to data.



**Mobile Authorisation** | Improve productivity by authorising hours and costs wherever you are with the myTrack mobile app. No more going back to the work trailer – spend more time in the field overseeing work.



**Built-in Intelligence** | Leverage myTrack's intelligence for accelerated transactions, precise spend validation, visual alerts for data exceptions, and real-time notifications. Elevate your accuracy and efficiency in managing contractor data.



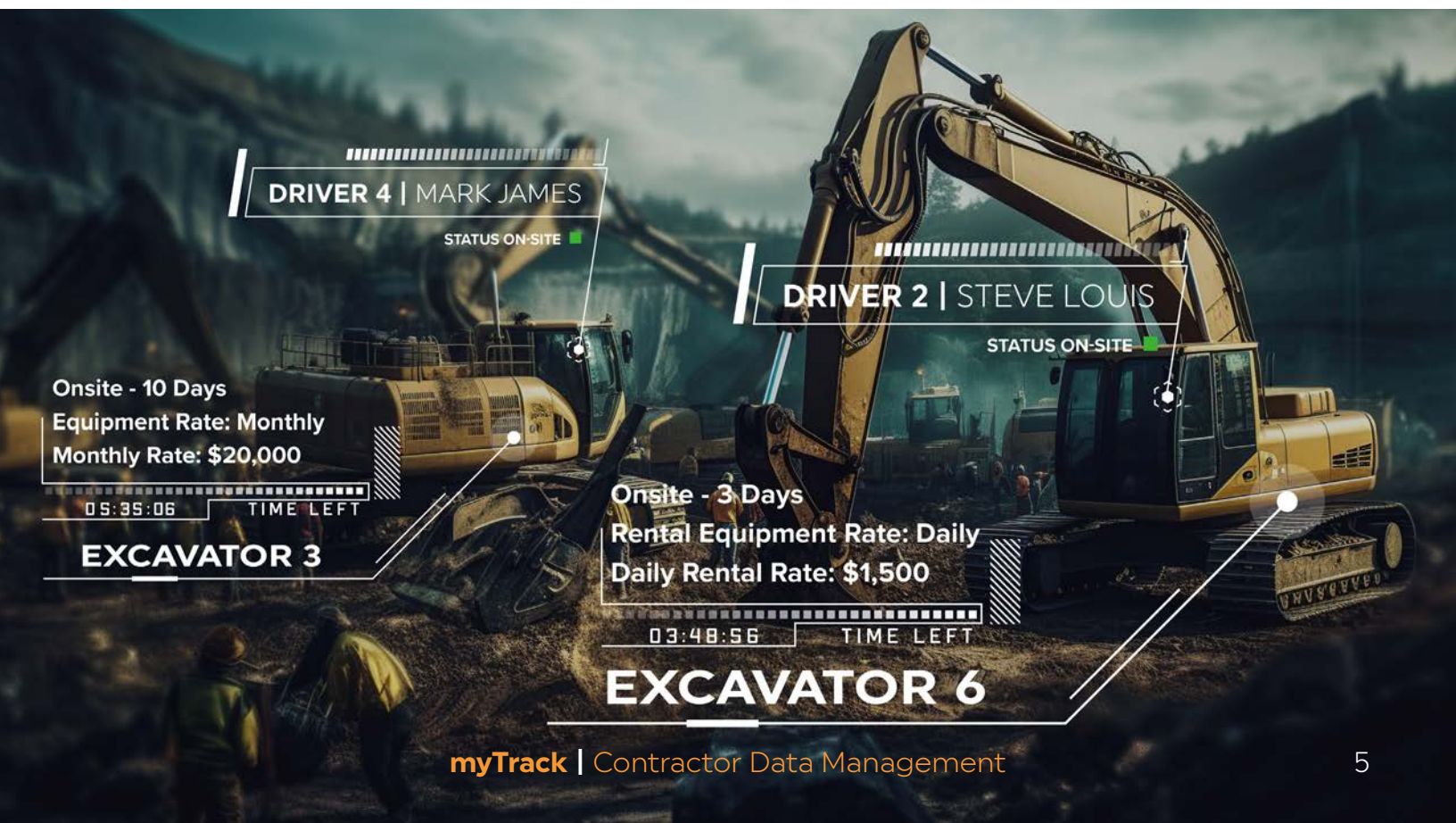
**Open API** | Cross-application spend controls are enabled through myTrack's open architecture.



**Reduce Administrative Time** | Have one simplified workstream and a personalised experience. Get real-time alerts through in-app notifications and texts. Plus, it is easier to accelerate contractor onboarding onto myTrack.



**Robust Architecture** | Propel your business forward with software built on the cutting edge of technology. Our commitment to innovation means myTrack's architecture is designed to grow with your business and emerging technologies such as AI, machine learning, and more.



# CONTRACTOR DATA MANAGEMENT

Global Fortune 5 Refinery Case Study

**\$2.1M**

6 WEEKS SAVINGS DURING  
A TURNAROUND

## INVOICED HOURS COMPARISON

Vendor Invoices	Contractor 1	Contractor 2	Contractor 3	TOTAL
ST Hours	49,628.50	62,277.50	42,624.75	154,530.75
OT Hours	22,835.00	23,759.50	13,814.00	60,408.50
DT Hours	6,311.00	8,761.00	3,153.25	18,255.25
Total Hours	78,744.50	94,798.00	59,592.00	233,164.50
Total Dollars	\$6,479,378.15	\$7,565,926.37	\$4,144,838.00	\$18,190,142.81

## TRACK CALCULATED HOURS

Track Calculations	Contractor 1	Contractor 2	Contractor 3	TOTAL
ST Hours	50,992.75	61,181.00	41,839.25	152,213.00
OT Hours	17,287.5	18,821.00	13,048.00	48,997.75
DT Hours	1,915.50	5,688.00	2,346.25	9,929.75
Total Hours	69,237.00	85,670.00	57,233.50	212,140.50
Total Dollars	\$5,437,466.05	\$6,673,995.41	\$3,947,040.56	\$16,058,502.03

Delta Hours	9,537.50	9,128.00	2,358.50	21,024.00
Delta Dollars	\$1,041,912.50	\$891,930.95	\$197,797.74	\$2,131,640.79

### CONTRACTOR 1

PERSONNEL ARRIVING > 5 MIN LATE | 479  
PERSONNEL LEAVING > 10 - 20 MIN EARLY | 906  
INVOICE DETAIL LINE DISCREPANCIES | 4,546

### CONTRACTOR 2

PERSONNEL ARRIVING > 5 MIN LATE | 23  
PERSONNEL LEAVING > 10 - 20 MIN EARLY | 482  
INVOICE DETAIL LINE DISCREPANCIES | 2,267

### CONTRACTOR 3

PERSONNEL ARRIVING > 5 MIN LATE | 23  
PERSONNEL LEAVING > 10 - 20 MIN EARLY | 994  
INVOICE DETAIL LINE DISCREPANCIES | 918

## STREAMLINED TRANSACTIONS

myTrack streamlines back-office processes and supports greater overall productivity, jobsite safety, cost controls, and strengthens contractor relationships.

- 1 Activity** | Activity occurs when myTrack collects the labour hours, equipment utilisation, and material usage. The users can see the time that the labour resources come in and leave the site and the actual hours earned.
- 2 Allocation** | Allocation is when the contractor distributes hours and costs available in myTrack to specific cost objects (PO, WO, WBS Elements).
- 3 Acceptance** | The Acceptance process is the final step for vendor timekeepers to charge the client-owner for the work. Acceptance provides a formal handoff for review and approval from the contractor timekeepers to the client-owner.
- 4 Authorisation** | Authorisation is a process where the client-owner representatives review, approve, or reject the accepted allocations of hours and costs to pay the contractors. (Typically, the supervisor or whoever is overseeing the work in the field)
- 5 Analyse** | Leverage myTrack data and business intelligence to make more informed decisions and highlight opportunities to reduce value leakage throughout the contract and contractor management process.



# ABOUT MANAGEMENT CONTROLS INC.

For over 30 years, Management Controls has helped global leaders in the heavy industrial asset industry save 10% to 15% on contractor labour, equipment, and material spend. With myTrack, you can remove any emotion or cause for debate when it comes to timekeeping, worker safety, contract compliance, and more.

When you automate your timekeeping process and reduce the complexity of contractor data management, you not only protect your budgets, but you also know your sites are safer and more productive.

The Track Platform is used at over 300 industrial sites, processes over USD \$50 billion annually in contractor spend, and generates over USD \$5 billion in annual savings.

## OUR CUSTOMERS



Ready to Harness the Power of myTrack?



**MANAGE TRACK OPTIMISE**