

Total-Ex is your LIVE Hazardous Area Verification Dossier (HAVD)

"If your project or operational plant has explosive hazardous areas, and your management systems struggle with maintaining EEHA compliance - you're no longer alone."

Every Item (tag) has a vast amount of data required to be compliant when operating in Hazardous Areas.

- Calculations
- Conformity Assessments
- Certificates of Conformity
- EEHA Compliant Inspection Reporting
- Engineering Documents

Total-Ex controls each piece of equipment's compliance from engineering right through construction, inspection and operation.

Once Total-Ex has collected this information, it becomes the single source of truth, and a clean, tightly permission's controlled live HAVD - even scheduling up coming compliance inspections.

The screenshot displays the Total-Ex web application. On the left is a sidebar with navigation options: Client (EngineeringCo Pty Ltd), Project, Dashboard, Tags, Construction, Inspection, Release Sources, Documents, Templates, Audit Logs, Roles, Users, and Manage Project. The main area shows a table of tags with columns: Area, Origin, Vendor, Vendor Package, Tag #, and Parent Tag. The table lists various tags for area 2401, including V-109A-02, V-109A-01, V-09D6X-705, V-09D6X-601, V-PK-1003-03, 0V-PK-1003-02, 0LPV-PK-1003-01, V-PK-1001-02, 0-PK-1001-01, 0-10011C, 10011B, ZI-10011A, ZI-10010, 0-XY-017, and 0-XY-100. On the right, a detailed view for tag 0LPV-PK-1003-01 is shown, including a list of rules (Rule 1: Passed, Rule 2: Passed, Rule 3: Not Applicable, Rule 4: Not Applicable, Rule 5: Failed, Rule 6: Not Applicable, Rule 7: Passed, Rule 8: Not Applicable) and a progress bar for Engineering (Engineer Approved, Approved for Construction, Construction Scoping), Construction (Construction Scheduled, Field Construction Complete, Construction Complete, Construction Complete Confirmed), and Inspection (Inspection Checklist, Inspection Assigned, Inspection Complete/Field, Live HAVD under EEHA Admin Master Control).

The screenshot shows a 'Project Competencies for Joe Engineer in Expansion' dialog box. It lists three competencies with checkboxes: UEENEEM037A (Conduct a conformity assessment of explosion protected equipment.), UEENEEM020A (Attend to breakdowns in hazardous areas - Gas Atmospheres.), and UEENEEM021A (Attend to breakdowns in hazardous areas - Dust Atmospheres.). There are 'Close' and 'Update' buttons at the bottom. In the background, another part of the application is visible, showing a 'Notification Center' with a list of notifications and a 'Permissions for use in Project/Plant expansion' section with checkboxes for Project, Documents, Images, Users, Roles, Tags, Release sources, and Vendor packages.

Each users competencies and actions on a tag are tracked for the life of that tag. In-depth audit logs, reporting and all other EEHA compliance data link to relevant tags, and are accessible at all times, by those you deem should have access.

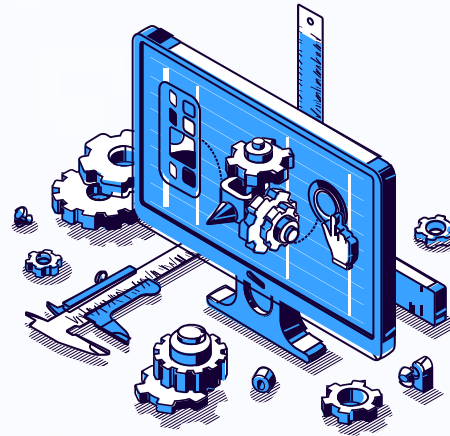
You can trust that if a task is being undertaken in Total-Ex, that user has the correct (and documented) competencies & certificates to complete it.

Total-Ex is your LIVE Hazardous Area Verification Dossier (HAVD)

If you have a 3D model or a digital twin of your plant, Total-Ex and all its data can be accessed by pairing with your digital twin.

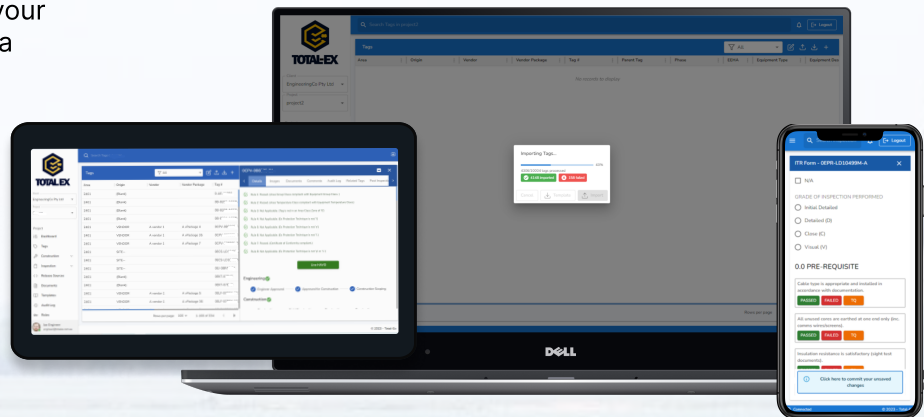
Select the tag, select Total-Ex from the drop down menu and you have it all.

Regain confidence that your data is compliant, accessible, and as you left it.



You can view your tags data either on your PC, on a field inspection tablet or even your phone.

Total-Ex connects you with your plant's EEHA compliance data wherever you are.



Planning a Brownfield expansion project which duplicates significant parts of your already operational plant?

Duplicate you existing facility in Total-Ex and understand your route to EEHA compliance within minutes not months or years.

Are Vendors your issue?

Most of the time offshore fabricated equipment for explosive environments come replete with non conformances if not rebuilds.

Not with Total-Ex. Vendors put their data into your project and Total-Ex checks every tag for compliance to EEHA rules & regulations.

For all enquiries:

Aaron Drew
Director & Engineering Manager
CPEng NPER GAICD
admin@totalex.com.au
Ph: (08) 6223 0200
M: (+61) 0402 335 890

You can do something the fast way, or the right way.

Do both with Total-Ex.

Improve efficiency, reduce human error and take the guess work out of your EEHA Compliance, Construction and Inspections.