

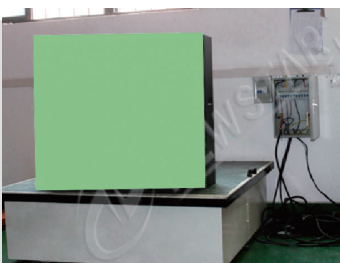
DOTPIX
NewstarLED



LED MODULES
FRONT & REAR SERVICE
OUTDOOR

ABOUT DOTPIX

Dotpix LED is an Australian owned business focusing on various quality LED displays sales and providing professional local service supports across Australia and New Zealand market. Our manufacturer and R&D centre Newstar LED is based in Shenzhen China with more than 15 years experience in designing, developing and producing LED displays. Our products portfolio includes indoor professional and fine pitch, outdoor commercial and fine pitch, sports stadium ribbons and scoreboards and rental business as well as customised LED products and modules. We commit to the local market with the quick and 24/7 service supports response to provide the best customers satisfaction. Dotpix LED displays will be always your first choice.





Outdoor LED Modules Series

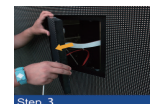
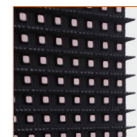
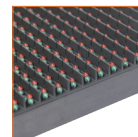
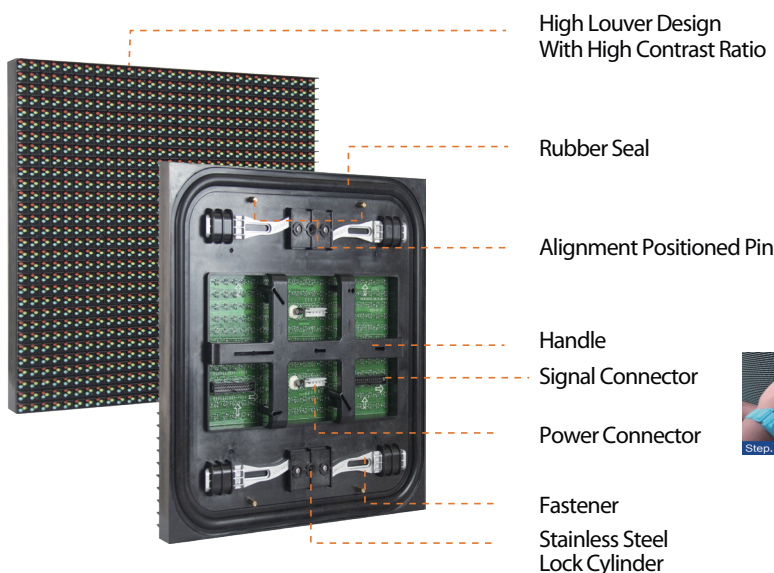
- Multiple Pitches
- Front & Rear Service
- Quick Installation
- Easy Maintenance



01

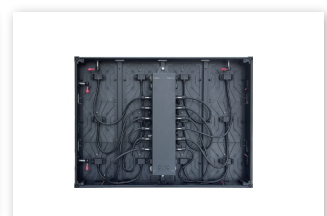
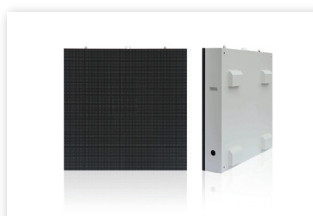
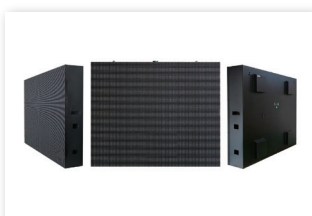
Dotpix Outdoor LED Modules Support Front & Rear Service

Best Design For Outdoor LED Digital Display/ Support Popular Customized LED Cabinet/Easily to Install and Simple Service/External Quick Connects for Power and Data/ Superior Brightness Vivid Colors/ High Contrast Ratio/ Reliable Performance



Customized Solution Offers To Your LED Panels

02



03

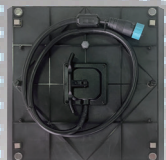
ON Series 250 x 250mm Outdoor LED Modules



4.81mm



5.95mm



4.81mm



6.94/8.33/10.44 mm

Model No	ON480	ON590	ON690	ON830	ON1040
Pixel Pitch	4.81mm	5.95mm	6.94 mm	8.33 mm	10.44 mm
Pixel Configuration	SMD1921	SMD1921	SMD2727	SMD2727	SMD2727
Module Dimensions (mm)	250 x 250	250 x 250	250 x 250	250 x 250	250 x 250 mm
Drive Mode	1/9	1/7	1/6	1/5	1/2
Brightness (cd/m ²)	≥ 6000	≥ 6000	≥ 6000	≥ 6000	≥ 6000
Color Processing (Bit)	13~16bit	13~16bit	13~16bit	13~16bit	13~16bit
Color Temperature	6500~9300K	6500~9300K	6500~9300K	6500~9300K	6500~9300K
Minimum Viewing Distance	20' or greater	24' or greater	28' or greater	34' or greater	43' or greater
Matrix Configuration	52 x 52 pixels	42 x 42 pixels	36 x 36 pixels	30 x 30 pixels	24 x 24 pixels
Maintenance Method	Front & Rear	Front & Rear	Front & Rear	Front & Rear	Front & Rear

OI Series 1ft x 1ft Outdoor LED Modules

04



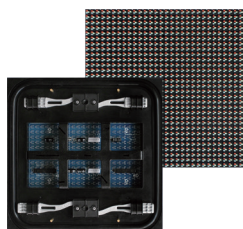
6.35mm



8.46mm



10.16mm



DIP 10.16mm



DIP 10.16mm



DIP 16.9mm

MODEL NO	OI630	OI840	OI1010	OI1010D	OI1690D
Pixel Pitch	6.35mm	8.47mm SMD	10.16mm	10.16 mm	16.9mm
LED Configuration	SMD 2727	SMD 2727	SMD 2727	DIP346	DIP346
Module Dimensions	1ft x 1ft	1ft x 1ft	1ft x 1ft	1ft x 1ft	1ft x 1ft
Drive Mode	1/4	1/3	1/3	1/3	Constant Static
Brightness (cd/m ²)	≥ 6500nit	≥ 7000nit	≥ 6000nit	≥ 10000nit	≥ 9000nit
Color Processing (Bit)	13-16 bit	13-16 bit	13-16 bit	13-16 bit	13-16 bit
Color Temperature	6500~9300K	6500~9300K	6500~9300K	6500~9300K	6500~9300K
Minimum Viewing Distance	26' or greater	35' or greater	42' or greater	42' or greater	69' or greater
Matrix Configuration	48 x 48 pixels	36 x 36 pixels	30 x 30 pixels	30 x 30 pixels	18 x 18 pixels
Maintenance Method	Front or Rear	Front or Rear	Front or Rear	Front or Rear	Front or Rear

OC Series 320 x 320mm Outdoor LED Module

05



4mm



5mm



6.67mm (1/4 Scan)



6.67 (1/6 Scan)



8mm



10mm



DIP 10mm



DIP 16mm

MODEL NO	OC400	OC500	OC660	OC800	OC1000	OC1000D	OC1000E	OC1600D
Pixel Pitch	4mm	5mm	6.67mm	8mm	10mm	10mm	10.66mm	16mm
Pixel Configuration	SMD1921	SMD1921	SMD 2727	SMD 2727	SMD 2727	DIP346	DIP346	DIP346
Module Dimensions (mm)	320 x 320	320 x 320	320 x 320	320 x 320	320 x 320	320 x 320	320 x 320	320 x 320
Drive Mode	1/10	1/8	1/6 or 1/4	1/4	1/2	1/4	1/3	Static
Brightness (cd/m²)	5500nit ~ 8000nit	5500nit ~ 8000nit	5500nit ~ 9500nit	5500nit ~ 9500nit	5500nit ~ 9500nit	7500nit ~ 10000nit	9000nit~10000nit	9000nit~10500nit
Color Processing (Bit)	13-16 bit	13-16 bit	13-16 bit	13-16 bit	13-16 bit	13-16 bit	13-16 bit	13-16 bit
Color Temperature	6500~9300K	6500~9300K	6500~9300K	6500~9300K	6500~9300K	6500~9300K	6500~9300K	6500~9300K
Minimum Viewing Distance	16' or greater	20' or greater	27' or greater	33' or greater	41' or greater	41' or greater	66' or greater	39' or greater
Matrix Configuration	80 x 80 pixels	64 x 64 pixels	48 x 48 pixels	40 x 40 pixels	32 x 32 pixels	32 x 32 pixels	30 x 30 pixels	20 x 20pixels
Maintenance Method	Front or Rear	Front or Rear	Front or Rear	Front or Rear	Front or Rear	Front or Rear	Front or Rear	Front or Rear

06

High Precision Aluminum Cabinet Design

Dual Service /High Brightness 5500nit~10000nit/ High Contrast Ratio/ More Pixels Available



4.2' x 3.15'
(1280mm x 960mm)



3.15' x 3.15'
(960mm x 960mm)



3.15' x 3.15'
(960mm x 960mm)



Stadium



Custom size

Dotpix full series outdoor LED modules have characterized by excellence LED display performance in high brightness & contrast ratio, with low power consumption, in which widely designed for various of commercial outdoor advertising sign, events, sports perimeter, Casino, public stations, airports, shopping center and more.



We Design & Build More Various LED Screen
Displays That helps you Light Up Your Future Business

DOTPIX / NEWSTAR LED

Unit D10 2A Westall Road Clayton VIC 3168

☎ +03 9544 8124

✉ info@dotpix.com.au

🌐 www.dotpix.com.au

DOTPIX
NewstarLED

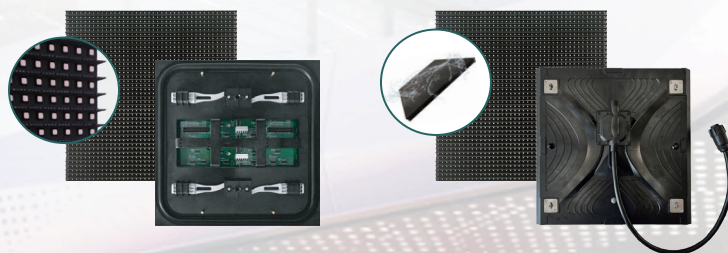
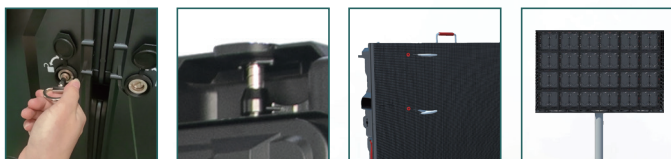


OUTDOOR
OC/OC PRO/OS SERIES
THE PREMIUM LED DISPLAY SOLUTIONS

01

OC SERIES Commercial Outdoor LED Display Solution

- Standard Cabinet Size 960 x 960mm
- High Precise & Reliability LED Cabinet
- Lightweight Die-casting Aluminum Frame
- Anti-Moisture, Dust & High IP Rating
- Anywhere Fixed Installation
- Quick Lock and Easy Maintenance
- Support Energy-Saving Solution

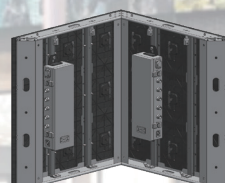
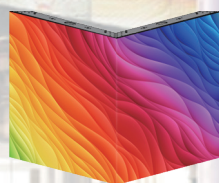


Module Size: 320 x 320mm
SMD Pixel Pitches: P4/P5/P6.67/P8/P10
DIP Pixel Pitches: P10/P10.66/P16

- Ultra High brightness up to 10000nits
- Compatible with front and rear service
- Special designed high mask louvers makes vivid display performance even though under direct sunlight condition

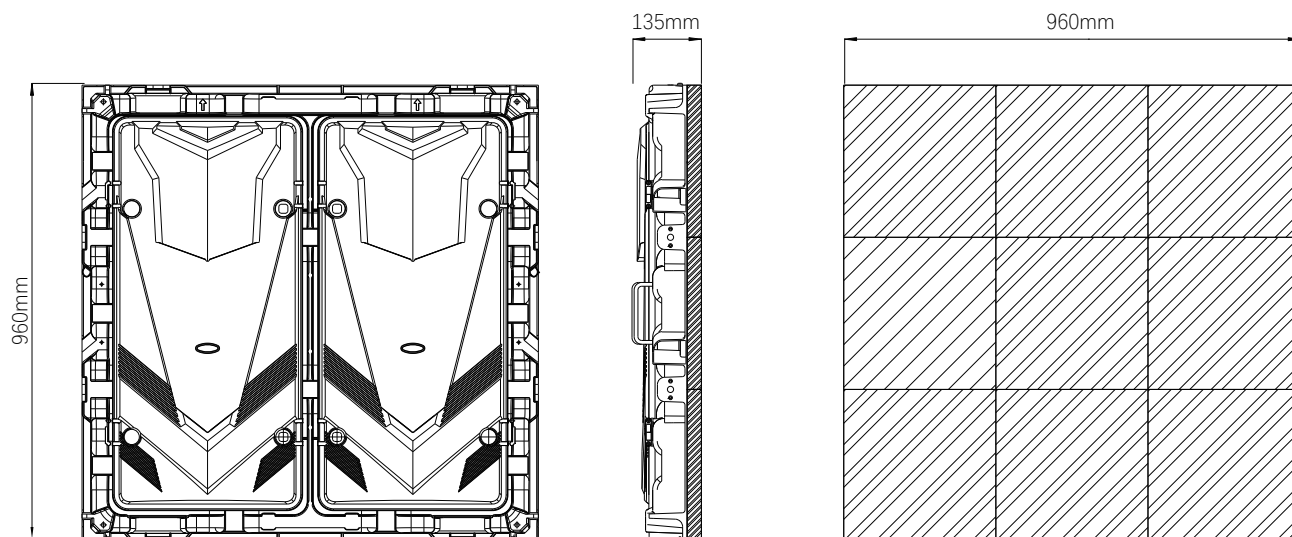
OC PRO Series Improved Outdoor LED Display Solution

02



- Seamless 90° Corner Splicing Better Display effect
- Support more various angles & Naked Eye 3D Project
- High Brightness Up to 10000nits
- High Refresh Rate & Contract Ratio
- Thin & Lightweight Aluminum Frame
- Two In One Cable Design
- Simple & Durable For LED Display
- Overall Waterproof LED Module IP65

PRODUCT SPECIFICATIONS



OC Series Specification

Pixel Pitch	4 mm	5 mm	6.67 mm	8 mm	10 mm	DIP 10 mm	DIP 10.66 mm	DIP 16 mm
Pixel Configuration	SMD1921	SMD1921	SMD2727	SMD2727	SMD2727	DIP346	DIP346	DIP346
Module Size (WxH)	320 x 320 mm	320 x 320 mm	320 x 320 mm	320 x 320 mm	320 x 320 mm	320 x 320 mm	320 x 320 mm	320 x 320 mm
Module Resolution	80 x 80 pixels	64 x 64 pixels	48 x 48 pixels	40 x 40 pixels	32 x 32 pixels	32 x 32 pixels	30 x 30 pixels	20 x 20 pixels
Panel Dimension	960 x 960 x 135 mm					960 x 960 x 135 mm		
Panel Dimension (Inch)	37.79" x 37.79" x 5.31"					37.79" x 37.79" x 5.31"		
Panel Resolution (H x V)	240x 240	192 x 192	144 x 144	120 x 120	96 x 96	96 x 96	90 x 90	60 x 60
Drive Mode	1/10	1/8	1/6	1/4	1/2	1/4	1/3	Static
Brightness (cd/m ²)	5500 ~ 8000nits	5500 ~ 8000nits	5500 ~ 9500 nits	6000 ~ 9500 nits	6500 ~ 10000 nits	7500nits	10000nits	10000nits
Color processing (Bit)	15 bit	15 bit	15 bit	15 bit	16 bit	16 bit	16 bit	16 bit
Grey Level	65536	65536	65536	65536	65536	65536	65536	65536
Refresh Rate	≤3840Hz	≤3840Hz	≤3840Hz	≤3840Hz	≤3840Hz	≤1920Hz	≤1920Hz	≤1920Hz
Pixel Density(pixels/m ²)	62500 pixels	40000 pixels	22500 pixels	15625 pixels	10000 pixels	10000 pixels	8800 pixels	3906 pixels
Viewing Angle (H/V) For High Mask	140/65					140/100		
Viewing Angle (H/V) For Normal Mask	140/140					110/45		
Operation Power Source	AC 110V-240V, 50-60Hz					AC110V-240V		
Power Consumption (Avg)(W/m ²)	274					180		
Power Consumption (Max)(W/m ²)	≤830					≤540		
Frame Material	Die Cast Aluminum					Die Cast Aluminum		
Weight Per Panel	31 kg					34 kg		
Operational Temp / Humidity	-20°-60°C, 10-90% RH -20°-60°C, 10-90% RH (-4°-122°F, 10-90% RH)					-20°-60°C, 10-90% RH -4°-122°F, 10-90% RH		
IP Rating	Outdoor IP65 Front / IP54 Rear					Outdoor IP65 Front / IP54 Rear		
Maintenance Method	Front & Rear					Front & Rear		

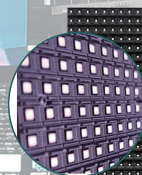
*Outdoor fixed series specifications can be customized.

- Designed for Sports Perimeter LED Screen Display
- High Refresh Rate Supports Perfect Program Display
- High Brightness Applies to Various Sports Scenes
- Quick LED Module Replacement Function Design
- Support Front & Rear Service and Maintenance



- Support 0-90° Adjustable Bracket
- Flexible bracket design can be adjusted with difference viewing angles, solid and stable support, which can be installed to indoor and outdoor stadium application.

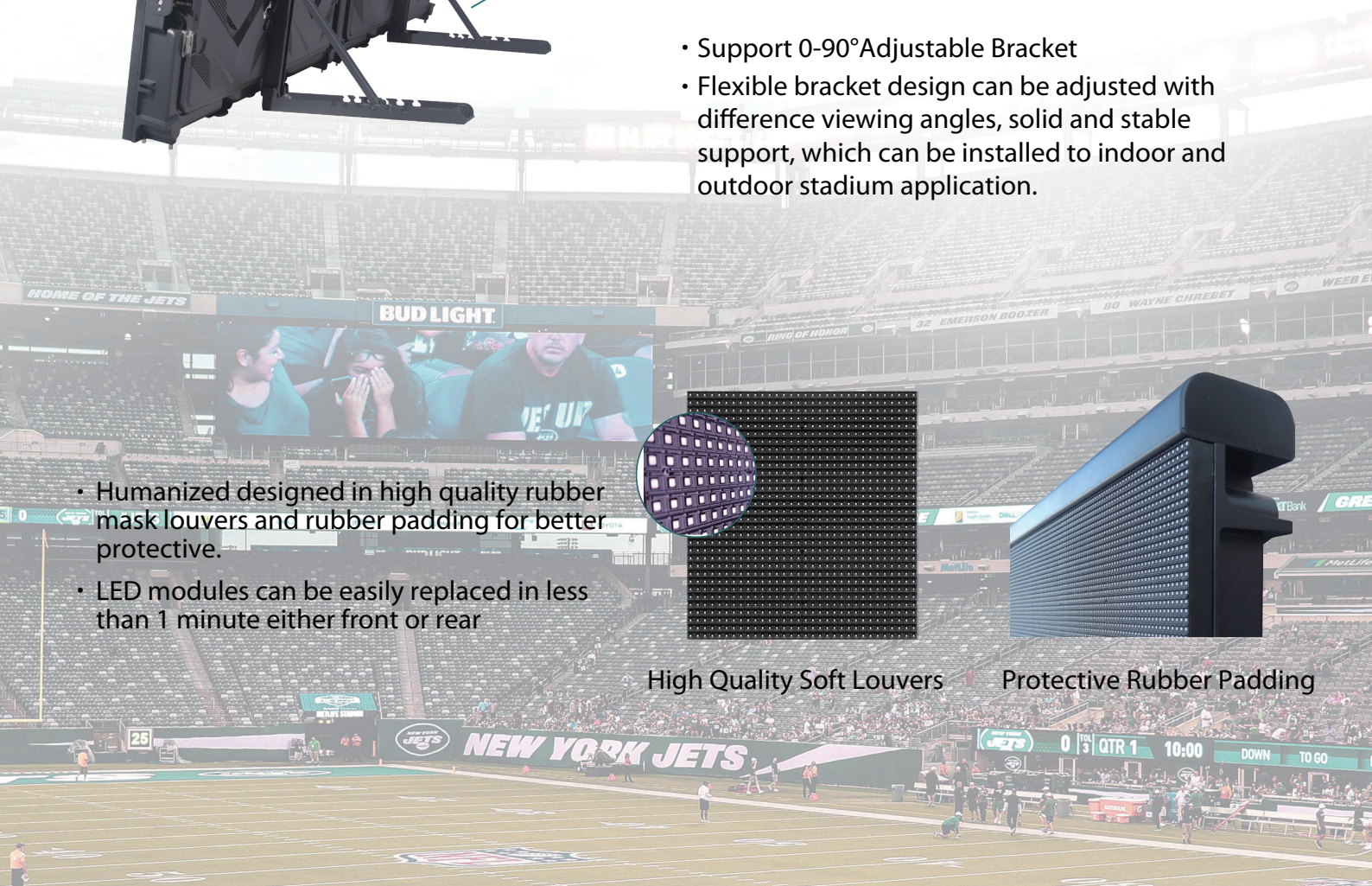
- Humanized designed in high quality rubber mask louvers and rubber padding for better protective.
- LED modules can be easily replaced in less than 1 minute either front or rear

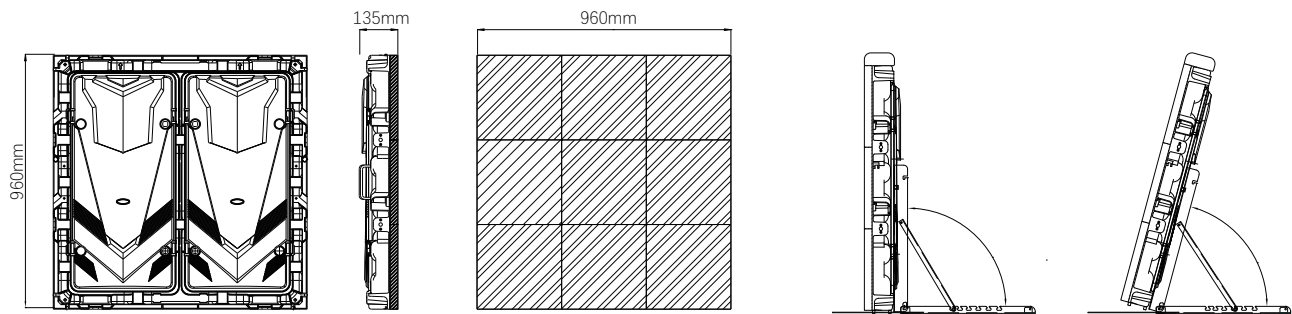


High Quality Soft Louvers



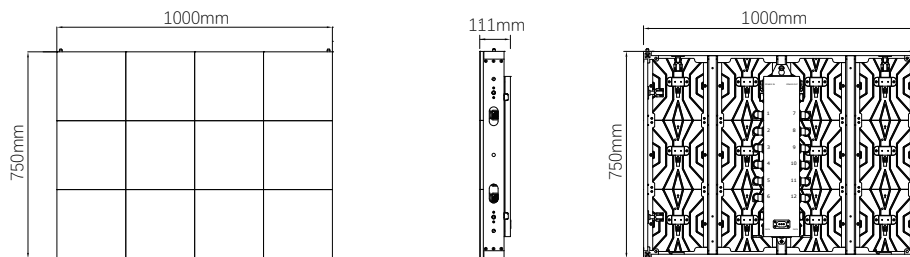
Protective Rubber Padding





OS Series Sport Perimeter Specification

Pixel Pitch	6.67 mm	8 mm	10 mm
Pixel Configuration	SMD 3 IN 1	SMD 3 IN 1	SMD 3 IN 1
Module Size (WxH)	320 x 320 mm	320 x 320 mm	320 x 320 mm
Module Resolution	48 x 48 pixels	40 x 40 pixels	32 x 32 pixels
Panel Resolution (H x V)	144 x 144	120 x 120	96 x 96
Pixel Density(dots/m²)	22500 pixels	15625 pixels	10000 pixels
Drive Mode	1/6	1/4	1/2
Brightness (cd/m²)	Up to 10000nits		
Panel Dimension	960 x 960 x 135 mm		
Panel Dimension (Inch)	37.79" x 37.79" x 5.31"		
Refresh Rate	≤3840Hz		
Viewing Angle (H/V)	High Mask 140/65 or Normal Mask 140/140		
Operation Power Source	AC 110V-240V, 50-60Hz		
Power Consumption W/m²	274W Avg / ≤830 Max		
Panel Weight (Kg)	34 Kg/panel		
Operational Temp / Humidity	-20° -60°C, 10-90% RH (-4° -122°F, 10-90% RH)		
IP Rating	Outdoor IP65 Front / IP54 Rear		



OC PRO Series Specification

Pixel Pitch	6.67 mm	8 mm	10 mm
Pixel Configuration	SMD 3 IN 1	SMD 3 IN 1	SMD 3 IN 1
Module Size (WxH)	320 x 320 mm	320 x 320 mm	320 x 320 mm
Module Resolution	48 x 48 pixels	40 x 40 pixels	32 x 32 pixels
① Regular Panel Dimension	960 x 960 mm	960 x 960 mm	960 x 960 mm
② Regular Panel Dimension	1280 x 960 mm	1280 x 960 mm	1280 x 960 mm
① Panel Dimension (Inch)	37.79"x37.79"	37.79"x37.79"	37.79"x37.79"
② Panel Dimension (Inch)	50.39"x37.79"	50.39"x37.79"	50.39"x37.79"
① Panel Resolution (H x V)	144 x 144	120 x 120	96 x 96
② Panel Resolution (H x V)	192 x 144	160 x 120	128 x 96
Pixel Density(dots/m²)	22500	15625	10000
Drive Mode	1/6	1/4	1/2
Brightness (cd/m²)	5500 ~ 9500 nits	6000 ~ 9500 nits	6500 ~ 10000 nits
Refresh Rate	≤3840Hz		
Viewing Angle (H/V)	High Mask 140/65 or Normal Mask 140/140		
Operation Power Source	AC 110V-240V, 50-60Hz		
Power Consumption W/m²	274W Avg / ≤830 Max		
Frame Material	Aluminum Profile Frame or Custom Made		
Panel Weight (Kg)	28~30 Kg/panel		
Operational Temp / Humidity	-20° -60°C, 10-90% RH (-4° -122°F, 10-90% RH)		
IP Rating	Outdoor IP65 Front / Rear		

We Design & Build More Various LED Screen
Displays That helps you Light Up Your Future Business



DOTPIX / NEWSTAR LED

Unit D10 2A Westall Road Clayton VIC 3168

☎ +03 9544 8124

✉ info@dotpix.com.au

🌐 www.dotpix.com.au

DOTPIX
NewstarLED



IE/IE PRO SERIES
LED DISPLAY SOLUTION
INDOOR



IE/IE PRO SERIES

IE/IE PRO Series mainly focuses on indoor LED display market, which combines the practical features of both traditional indoor led screen and rental led screen. Two sizes of panel designed come with slim die-casting aluminum housing, seamless connection between each panels, the faster side locks makes the panels to be quickly assembled and disassembled, it's passed reliable tensile technical test, as well as supports to be installed by hanging-up for various indoor LED displays.



Seamless Panel Design



Front And Rear Service



Slim Line Panels



Intelligent Module



High-Contrast



High Brightness



High Refresh Rate



Light Weight



Curve installation



Whisper-quiet operation



Expanded Inspiration Design

The inspiration design of IE /IE Pro cabinet which supports wider range of installing options, using the lightweight die casting aluminum frame. The excellent display performance in high brightness whiles using multiple small pixel pitches for window led display solution.

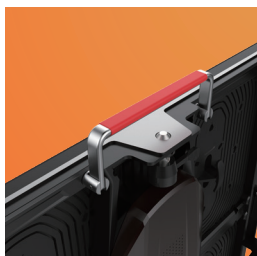


Easy Panel Access Front & Rear

Design of separate frames and modules allows for more efficient reduce the time of installation, and cost effective of service, easy to maintenance front or rear available.



Two Panel Size Options
(480x480mm/500x500mm)



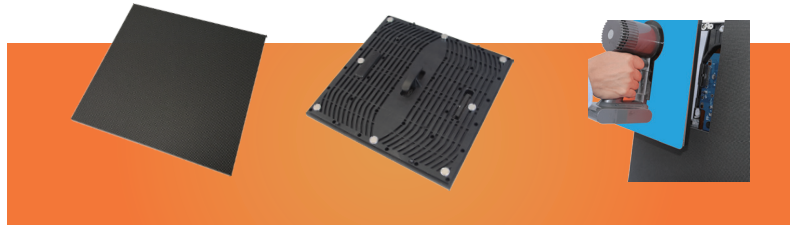
Fast Lock for Quick Installation

The faster side locks make the panels to quickly assembly and disassembly, meanwhile it's passed reliable tensile technical test that supports to be installed by hanging-up for rental application.



Easy To Use And Service

Every part of led panel can be replaced through front & back way. The visualized Back Side for whole set of PDP which differs from traditional one, these concepts make sure seamless screens and easy to use.



Entirely Modular In Design

Entirely modular in design with magnetic without screws, no up-down direction with strong handles on modules. Design with high refresh rate, high brightness up to 3500nits and high greyscale levels, wide color gamut to accurately performance display.



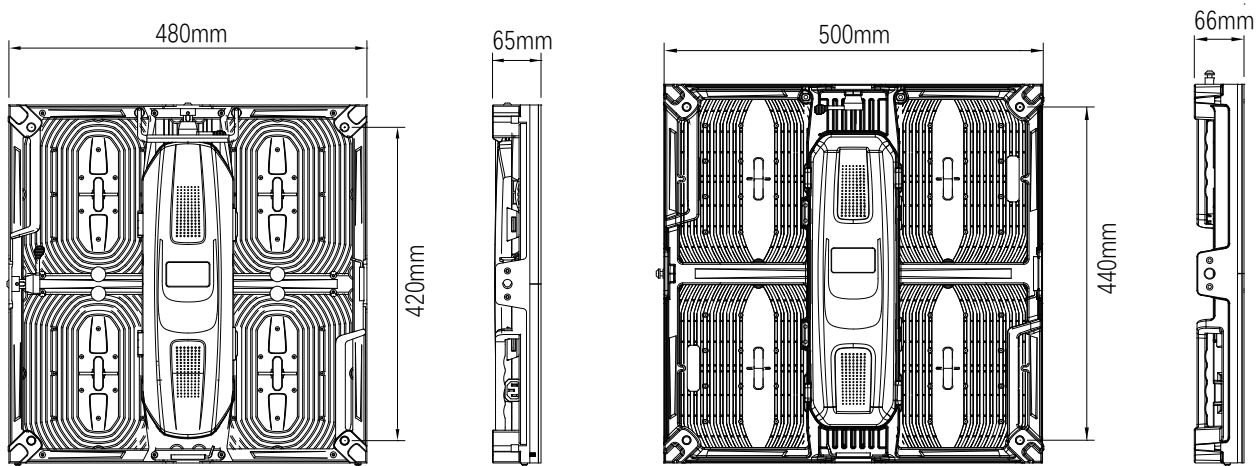
Slim Die-casting Aluminum housing



Flexible Indoor Installation Methods

IE/IE PRO Series mainly focuses on commercial indoor LED screen display, the panel concepts which combines features of traditional indoor fixed LED screens and rental led display for more display scenarios.

PRODUCT SPECIFICATIONS



Product Line	IE Series (480X480)	IEP Series(500X500)
Model No.	IE151/E161/E181/E251/E301	IEP191/EP261/EP291/EP391
Pixel Pitch (mm)	1.579/1.667/1.875/2.5/3	1.953/2.604/2.976/3.91
LED Configuration	SMD1010/SMD1010/SMD1515/SMD2020/SMD2020	SMD1515/SMD1515/SMD1515/SMD2020
Module Size (WxH) (mm)	240 x 240	250 x 250
Pixel Density(dots/m ²)	401111/360000/284444/160000/111111	262144/147456/112896/65536
Module Resolution (dots)	152 x152/144 x 144/128 x128/96 x 96/80 x 80	128x128/96 x 96/84 x84/64 x 64
Panel Dimension (mm)	480x480x65 mm	500x500x66 mm
Panel Dimension (Inch)	18.90" x 18.90" x 2.56"	19.69" x 19.69" x 2.59"
Panel Resolution (H x V)	304 x 304/288 x 288/256 x 256/192 x 192/160 x 160	256 x 256/192 x 192/168 x 168/128 x 128
Max. Brightness	1000nits~2500nits or higher	1000nits~2500nits or higher
Weight Per Panel	5.0 kg	5.3 kg
Power Consumption (Avg)(W/m ²)	230/230/200/170/200	190/167/185/180
Power Consumption (Max)(W/m ²)	700/700/600/520/600	580/500/560/540
Viewing Angle Vertical	160°	160°
Viewing Angle Horizontal	160°	160°
Refresh Rate	≥3840Hz	≥3840Hz
Gray Scale(level)	12-14 bit	12-14 bit
Driving Mode(Scan)	1/31 1/24 1/32 1/32 1/20	1/32 1/32 1/28 1/16
Frame Material	Die-Casting Aluminum	Die-Casting Aluminum
Operational Temp / Humidity	-20° -50°C, 10-90% RH -4° -122°F, 10-90% RH	-20° -50°C, 10-90% RH -4° -122°F, 10-90% RH
IP Rating	Indoor Rating	Indoor Rating
Maintenance Method	Front & Rear	Front & Rear

*IE/IE Pro Series specifications can be customized.



We Design & Build More Various LED Screen
Displays That helps you Light Up Your Future Business

DOTPIX / NEWSTAR LED

Unit D10 2A Westall Road Clayton VIC 3168

☎ +03 9544 8124

✉ info@dotpix.com.au

🌐 www.dotpix.com.au