

**Tro** Pacific

# ELECTRICAL AUTOMATION CONTROL >



**RAPID SOLUTIONS.  
EXCEPTIONAL SERVICE**

**1300 876 722 | [www.tro.com.au](http://www.tro.com.au)**

# TRUSTED GLOBAL BRANDS >

As an Australian owned distributor for industrial electrical, automation and control system products, you can be confident and assured that **we provide the highest quality product that is certified and compliant with relevant statutory regulations in Australia.**

# CERTIFIED QUALITY & ASSURANCE >

## Client Portfolio:

ABB, Abergeldie, Acciona, AGL, Air Liquide, Airbus, Alcoa, Alstom, Ampol, ANSTO, Arnotts Biscuits, Arrow Energy, Asahi Beverages, Aurizon, Ausgrid, Auslec, AWM Electrical, BAE Systems, Bechtel, BHP, Blackwoods, BlueScope, BOC, Boeing, Boral, Bosch Rexroth, Bureau of Meteorology, Burkert, Campbell Soup Company, Capral, Carlton & United Breweries, Caterpillar Inc, NASA, Coca-Cola Amatil, Cochlear Ltd, CS Energy, CSIRO, CSR, Data3, DB Schenker, Defence Science & Technology Group, DeLonghi, Domino's, Downer Group, Dulux, Eaton, Energex, Energy Australia, Festo Pty Ltd, Fonterra, GHD, Glencore, Santos, Goodman Fielder, Grundfos, Hans Continental Smallgoods, Haymans Electrical, Heinz Group, Hitachi, Honeywell, Incitec Pivot Limited, Komatsu, KONE Elevators, L & H, Legrand, Lendlease, Motorola Solutions, NBN Co, NEC Australia, Omron, Orica, Origin, Parmalat Australia, Patties Foods, Peabody Energy, Queensland Rail, Rexel, Rheem, Rio Tinto, Roadtek TMR, Rockwell Automation, Sage, Schindler Lifts, Schneider Electric, SEQ Water, SEW-Eurodrive, Shell, SICK, Siemens, SMC, Sonepar, Stowe, Sydney Trains, Sydney Water, Telstra, Tesla, Tyco, UGL, Unity Water, Ventia, Veolia, Visy, Vodafone, Weir Minerals, Western Power,

## Corporate Memberships:



**Partner with confidence and discover how TRO continues to innovate Australian businesses as a stockist for industry leading brands.**

# CONTENTS >



<b>WELCOME AND COMPANY OVERVIEW.....</b>	<b>2</b>
<b>TABLE OF CONTENTS.....</b>	<b>3</b>
<b>OUR BRANDS.....</b>	<b>4</b>
<b>IP ENCLOSURES.....</b>	<b>5-7</b>
<b>WEIDMULLER.....</b>	<b>8-9</b>
<b>LS ELECTRIC.....</b>	<b>10-11</b>
<b>GIOVENZANA.....</b>	<b>12-13</b>
<b>C&amp;S ELECTRIC.....</b>	<b>14</b>
<b>BRADY.....</b>	<b>15</b>
<b>FIBOX.....</b>	<b>16</b>
<b>ICOTEK.....</b>	<b>17</b>
<b>AUER SIGNAL.....</b>	<b>18</b>
<b>ARMORGARD.....</b>	<b>19-20</b>
<b>ELETTROCANALI.....</b>	<b>20</b>
<b>DELTA.....</b>	<b>21</b>
<b>ALLBRO.....</b>	<b>21</b>
<b>BROYCE.....</b>	<b>22</b>
<b>ITS SOLUTIONS.....</b>	<b>22</b>
<b>ASSEMBLIES/MOD CENTRE.....</b>	<b>23</b>
<b>CONTACT.....</b>	<b>24</b>

Rapid Solutions. Exceptional Service

# OUR

# BRANDS >

Industry renowned & recognised, global brands.



& more...

Rapid Solutions. Exceptional Service



# AIRCONDITIONED FIELD CABINETS

Compatible with IP Enclosures SAA Approved Air-conditioners

## **STEEL**

# **ELECTRICAL ENCLOSURES**

- Powdercoated Galvanised Steel
- Protection to IP66
- Advanced Features & Accessories



## **STAINLESS STEEL**

# **ELECTRICAL ENCLOSURES**

- Grades 304 & 316 Stainless Steel
- Protection to IP66
- Advanced Features & Accessories



## **STEEL**

# **FLOOR STANDING**

- Powdercoated Galvanised Steel
- Protection to IP55
- Modular, Large Range of Sizes



## **STAINLESS STEEL**

# **FLOOR STANDING**

- Protection to IP55
- Grades 304 & 316 Stainless Steel
- Modular, Large Range of Sizes

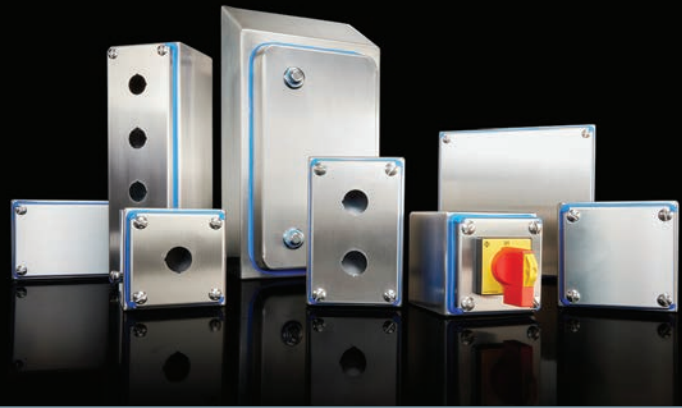




**IP69K+**

## **HYGIENIC**

- 304 Stainless Steel, FDA Approved
- Protection to IP66 & IP69K
- Certified EHEDG Hygienic, Food Grade



## **DATA RACKS**

- Powdercoated Galv Steel
- Aluminium
- 316 Stainless Steel
- Protection to IP66
- 12RU-42RU
- Wall-Mounted
- Floor Standing



## **FIELD CABINETS**

- Powdercoated Galv Steel
- Aluminium
- Protection to IP66
- 18RU-42RU Single & Double Bay
- Optional: Double Wall Air-Conditioned



## **THERMAL MANAGEMENT**

- Ventilation Filters, Fans & Vents
- Air-Conditioners
- Anti-Condensation Heaters





**Weidmüller** 

Innovators of Industrial Connectivity Solutions

## POWER SUPPLIES

- Switch-Mode Power Supplies
- Uninterruptable Power Supplies
- DC/DC Converter



## INDUSTRIAL ETHERNET

- Unmanaged Switches/Managed Switches
- Power Over Ethernet (POE)
- Serial/Fibre-Optic Converters
- Industrial Network Routers
- Media Converters





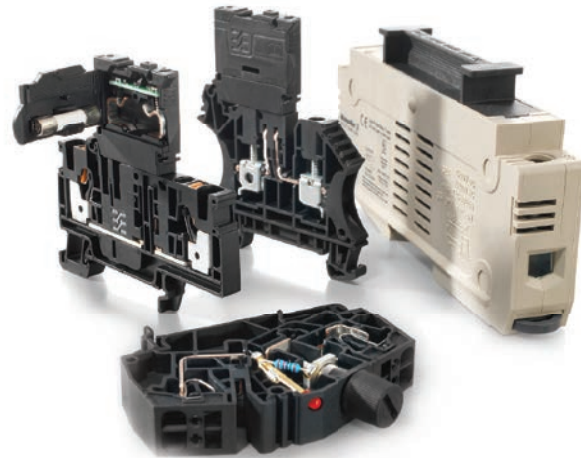
## RELAYS

- General Purpose Relays
- Solid State Relays
- Slimline
- 1—4 Pole



## DIN TERMINALS

- Screw Terminals
- Push-in Terminals
- Fuse Terminal Blocks
- Accessories



## PRINTERS & MARKERS

- Terminal Markers
- Full range available
- Dekafix, WS, WAD etc.
- Multifit/MultiCard
- Wire Markers
- Slimfix
- Aluminium, Stainless Steel



## SURGE PROTECTION

- Instrumentation & Control
- AC and DC Applications
- PV Solar Surge Protection

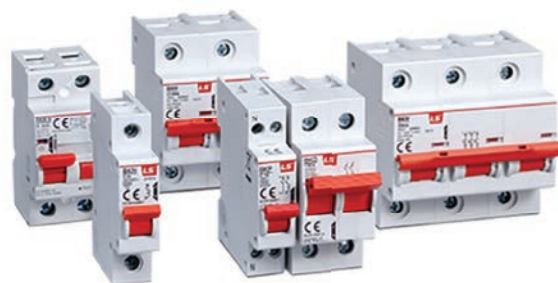




## Industrial Switchgear

### MCB

- Overcurrent Protection
- 6kA and 10kA Fault Current Rating
- 1–4 Pole
- 1–125 Amps



### RCD & RCBO

- Protection against Earth Leakage
- 10–32 Amp Single Pole RCBO's
- 40 & 63 Amp RCD's



# MCCB

- Moulded Case Circuit Breaker
- 16—1600 Amp
- 50kA—150kA Fault Current Rating
- 1, 3 & 4 Pole



# ACB

- Air Circuit Breaker
- Overcurrent Protection
- 630—6300 Amp
- 3 & 4 Pole
- Drawout & Fixed



# CONTACTORS & OVERLOADS

- Suitable for controlling, protecting, & switching.
- 3 & 4 Pole
- 2.2kW—900kW Sizes Available



# MOTOR PROTECTION

- Motor Protection Circuit Breakers
- Complete ranges up to 100A and high breaking capacities up to 100kA at 415VAC.





## PILOT LIGHTS

- 22mm cutout
- Range of colours including:  
Red, Green, White, Yellow, Blue



## PUSHBUTTONS & EMERGENCY STOPS

- Illuminated & Non-Illuminated
- Emergency Stops
- Range of colours including:  
Red, Green, White, Yellow, Blue



## SELECTOR SWITCHES

- 2 & 3 Position
- Maintained & Spring Return
- Illuminated & Non-Illuminated
- Range of colours including:  
Red, Green, White, Yellow, Blue



## PUSHBUTTON ENCLOSURES

- Available in Grey & Yellow
- 1-6 Hole
- Includes 22mm Cut-outs







### CHANGEOVER SWITCHES

- Wide range of sizes available from: 125–1600 Amp
- 3 & 4 Pole
- Changeover Mechanisms to suit
- Accessories



### LOAD BREAK SWITCHES

- Wide Range of Sizes Available from: 25–3150 Amp
- 3 & 4 pole
- Base Mounts
- Accessories



## PRINTERS

- Brady M610 Portable Label Printer with WiFi
- Brady BMP71 Label Printer with PWID software
- I7100 300 DPI Label Printer
- BBP12 Label Printer
- M210/11 Label Printer  
(includes Workstation software)



## LABELS & INSERTS

- PermaSleeve/ Heatshrink
- Durasleeve Wire Marking Inserts
- Self-Laminating Vinyl Labels
- Durasleeve Wire Inserts
- High Adhesion Polyester Labels
- Ribbons to suit
- Raised Panel Rectangular Labels



## CONSUMABLES

- Mini-Lockout Kits
- Lockout Safety Brady Padlocks
- Lockout Tags
- Printer accessories
- Cleaning Kits
- First Aid Kits



# FIBOX

## POLYCARBONATE ENCLOSURES

### ARCA WALL MOUNTED ENCLOSURES

- Non-metallic enclosures
- Superior chemical resistance
- High impact rating
- IP66 Weatherproof; NEMA Type Approvals
- Wide temperature utilization range
- Feature industry standard dimensions and



### EURONORD PLASTIC TERMINAL BOXES

- Designed to house din-rail mounted terminal blocks & sensors
- IP66 Weatherproof; NEMA Type Approvals
- Wide range of dimensions



### ALN ALUMINUM TERMINAL BOXES

- Designed to house DIN-rail mounted terminal block & sensors
- IP66/67/68; IK 08; NEMA Type Approvals
- Wide range of dimensions





## Cable entry systems and EMC cable shielding components

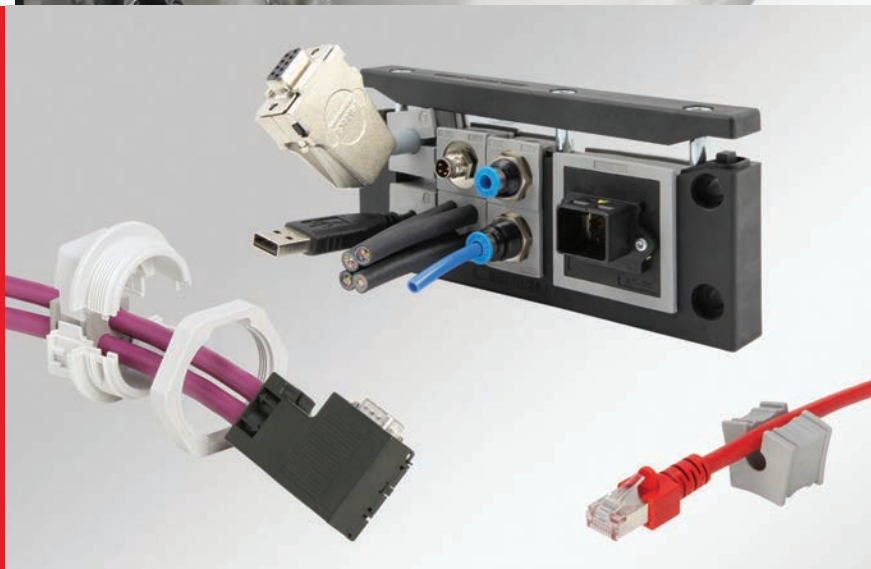
### CABLE ENTRY PLATES

- Designed for cables without connectors
- Installs multiple cables with singular cut-out
- Robust plastic or metal hard frame with moulded elastomer
- Up to IP68 Weatherproof seal; UL Type 4X
- Low mounting height of 8 to 14.5 mm
- Suitable for food & beverage



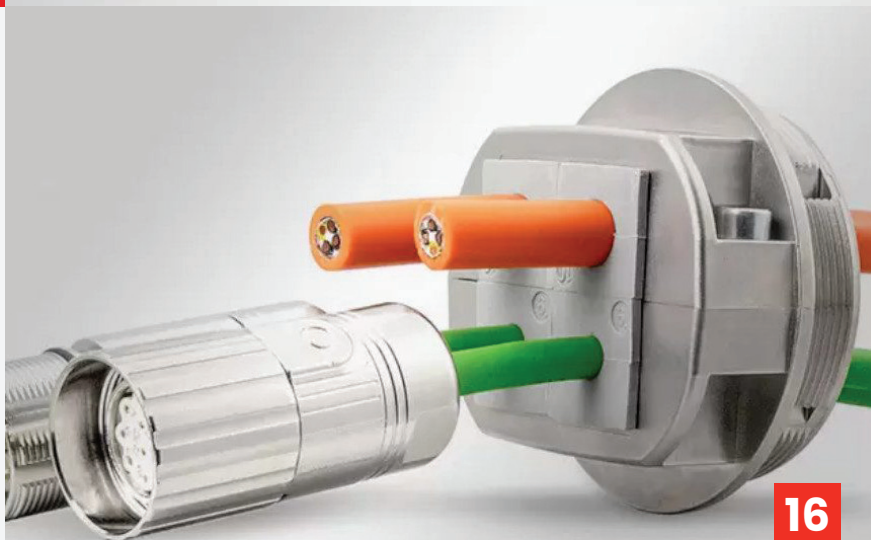
### FRAMES & GROMMETS

- For Retrofits, Maintenance & Repairs
- High cable density, wide variety of grommets
- Diameters from 1 to 16mm & 13-35 mm
- High stability, vibration resistant
- Strain relief according to EN 62444
- Warranty on pre-terminated cables\*



### SPLIT CABLE GLANDS

- Superior sealing technology
- Metric thread design
- IP66/IP68; Weatherproof Protection
- UL Type 4X Standards; EN 60529/UL50







**Auer Signal**



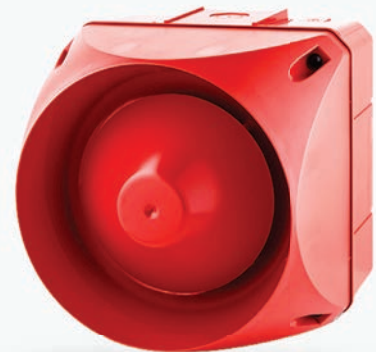
## LIGHT BEACONS

- LED Stack lights; 24VAC/DC, Steady
- Up to IP66 Protection & impact resistance IK09\*
- 94mm sizes; cubic design
- 230 VAC & 2-48VAC/DC options
- Colours: Red, Amber
- Multi-tone: 32 Tone Sounder
- Accessories



## BUZZERS & ALARMS

- Panel mounted options
- 65 dB to 108dB
- Up to IP65 & impact resistance IK09
- LED Colours: Red & Amber
- Alarm horns, Piezo buzzers & Sirens
- Wide variety of sizes
- Accessories



## STACK LIGHTS

- Modular or Compact options
- Available in LED colours: Red/Green/Amber
- Aluminium Tube Mounting options
- 30mm-70mm sizes
- IP65, UL type 4/4X/13 (Half-dome only)
- Steady or Strobe beacon



## OXBOX™

- Cost-effective storage vault
- 5-lever deadlocks and jemmy-proof joins
- Gas strut opening & closing mechanisms
- Steel plate construction; powder-coated finish
- Forklift pockets with fixing slots
- Easily transportable & robust design



## FORMASTOR™

- The ultimate industrial control station solution
- Suitable for Solar & Battery systems
- Features a fully collapsable, modular design
- Assembled within 10 minutes\*
- Available in 4 unique sizes for scaling
- 5-lever deadlocks and jemmy-proof joins



## SPOOLKART™

### SPK2 MOBILE CABLE DISPENSER

- Stores, organises & operates with multiple spools
- Puncture proof, solid rubber wheels
- 2.5mm steel construction; powder coating finish
- Three easy-to-load spool bars supplied
- Purpose designed cut out holes for storage
- Lockable storage box fitted onto back of unit



## TREKDROR™

- Stackable tool drawers, available in three sizes
- Keeps tools tidy and organised
- 5-lever deadlocks for added security
- Accessories for fixing to a surface
- Robust corrugated 1.5mm steel casing



## FITTINGSTOR™

- mobile secure storage cabinet
- designed to keep the 'copper thieves' at bay
- designed to secure all your M&E components
- Keyed alike 5-lever deadlocks
- Reinforced removable shelves
- Robust steel plate construction



## SLOTTED DUCT

- Made of self-extinguishing and UV resistant technopolymer
- Manufactured in Italy
- Wide range of sizes



## WALL MOUNT ENCLOSURES

- Corrosion Resistant Glass Reinforced Plastic (GRP)
- IP66 Weatherproof
- Operating Temperature: 50°C — +200°C



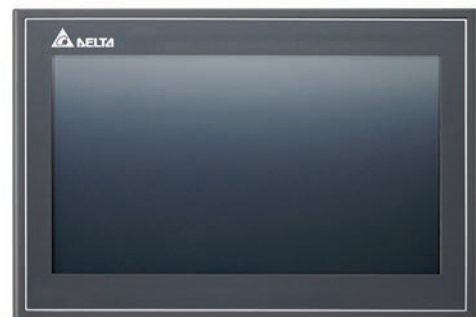
## TERMINAL BOXES

- Available in Polycarbonate or GRP
- Available in IP66—IP68 Weatherproof
- Wide Range of Sizes



## HMIS

- Standard and Advanced ranges
- Ethernet support
- 4.3"—12.1" Displays available
- IP65 Rated





## PROTECTION & CONTROL

# TIMERS

- Liquid Level Controls
- Delay/On-Off Timers
- Multifunction Timers
- Star Delta Start Timers



## PROTECTION & CONTROL

# PROTECTION RELAYS

- Over/Under Voltage Relays
- Earth Leakage Relays
- Phase Monitoring Relays

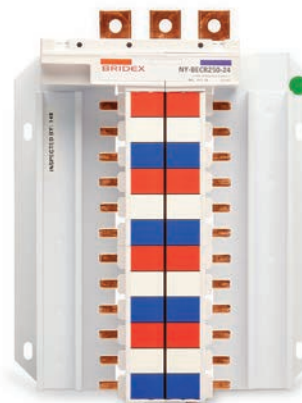


# BRIDEX

## POWER DISTRIBUTION

# MCB CHASSIS

- Available in Wide Range of Sizes:
- 12-96 Pole
- Available in 18 & 27mm Pitch
- Hybrid & Standard



# ASSEMBLY SERVICE >



We supply electrical enclosures, products and components fully assembled – awaiting wiring by you or your sub-contractor.

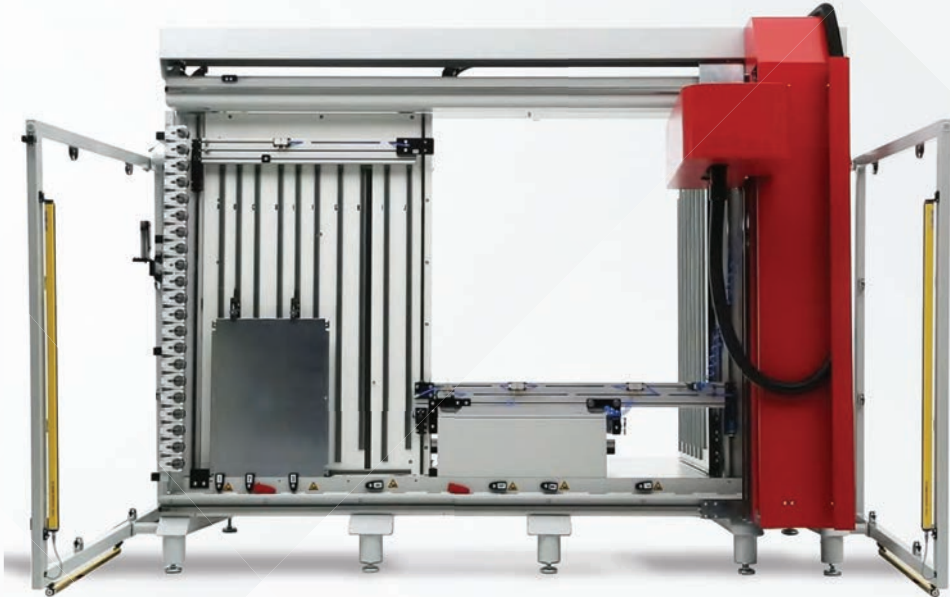


## MODCENTRE

Make your enclosure more competitive, efficient and improve your bottom line with the Modcentre. The State-of-the-art machine **significantly reduces the time and costs associated with tapping and milling** in electrical enclosure component integration. Reduce your lead times by modifying TRO stocked enclosures with precision cutouts and holes to meet customer demands. Talk to our technical team to learn how we can accommodate your project requirements.

### Features & Advantages:

- ✓ Precision Cut-outs
- ✓ Faster lead times
- ✓ Highly cost-effective



# ITS ENCLOSURES >

## INFRASTRUCTURE SOLUTIONS



### ITS Intelligent Infrastructure Enclosures

Products are approved to rigorous testing conducted by certified laboratories & certifications.



**25 Year**

Structural Warranty Guarantee

Members of

**itsaustralia** <>  
Intelligent Transport Systems

More information:

infrastructure@tro.com.au  
1300 876 722 | [www.tro.com.au](http://www.tro.com.au)



[company/tro-pacific](https://www.linkedin.com/company/tro-pacific)



**We look forward to fulfilling your projects**

**[www.tro.com.au](http://www.tro.com.au)**

**1300 876 722**

Tro Pacific Holdings Pty Ltd Trading as Tro Pacific  
ABN 94 168 980 854

Head Office: 19 Fred Chaplin Circuit, Bells Creek QLD 4551

NSW Warehouse: Unit 5, 2-8 South Street Rydalmere NSW 2116

Phone: 1300 876 722 | [sales@tro.com.au](mailto:sales@tro.com.au)

© Copyright 2023 Tro Pacific Holdings Pty Ltd. All rights reserved.