



SOILCO's Infrastructure Network and Project Case Studies



Our Network

SOILCO successfully operates a state-of-the-art network of licensed organics processing facilities. Our infrastructure network continues to expand, with the purchase of new sites and the construction of additional processing capacity.



SOILCO specialises in the design, build and operation of innovative organics recycling facilities that produce quality-assured products that meet the soil improvement needs of Eastern Australia.

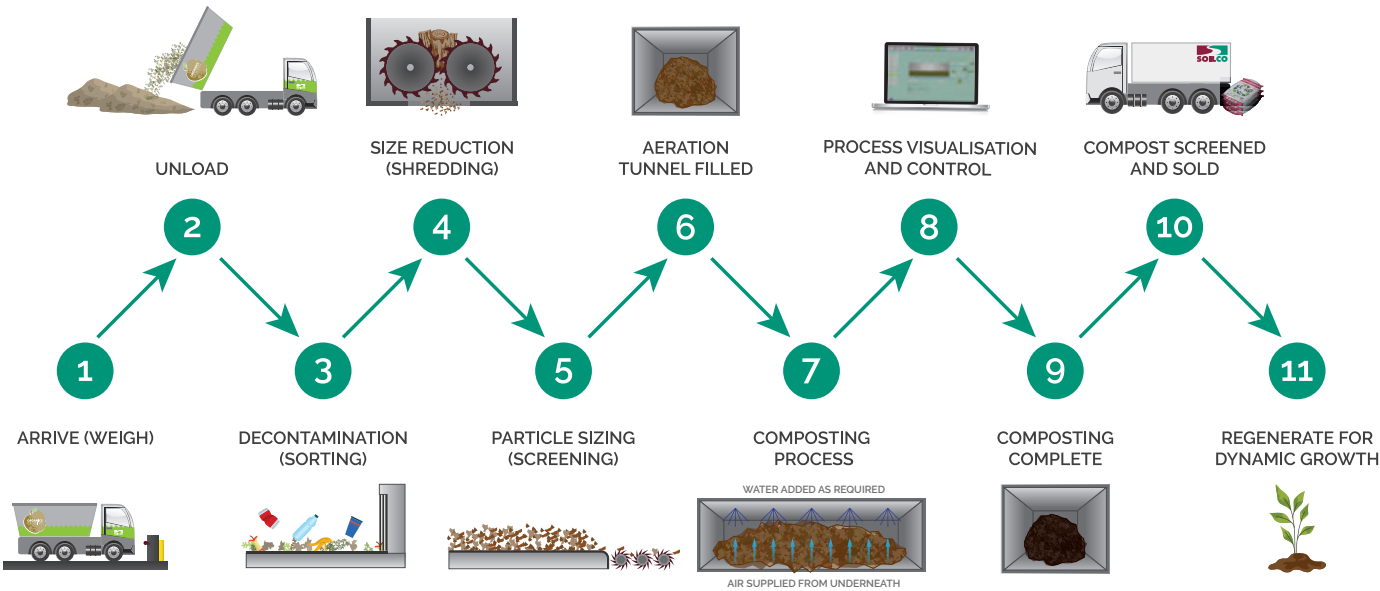
Our Process

Our in-house planning, approvals and project team is experienced in the delivery of large-scale organics processing facilities. We understand first-hand the time, cost and resources required to upgrade or build new organics processing facilities in an ever-changing regulatory environment.

We have an excellent track record of preparing comprehensive Environmental Impact Statements, which are supported by specialist studies performed by reputable consultancies. These organisations understand our industry, business operations and facility plans, delivering streamlined and efficient EIS processes.

This approach gives our clients comfort that SOILCO facilities will be planned, approved and constructed in an efficient and environmentally sustainable manner.

Our facilities enable the transformation of organic waste into quality-assured products for a variety of end-users.



Tweed Organics Processing Facility (OPF)

- CLIENT:** Tweed Shire Council
- TOTAL PROJECT VALUE:** ~\$14M
- INFRASTRUCTURE:** Processing Building and In Vessel Composting
- CONTRACT DURATION:** 10 + 5 Years
- SITE CAPACITY:** 25,000 tpa

Tweed Shire Council engaged SOILCO to develop a new Organics Processing Facility (OPF) on a vacant area within its Stotts Creek Resource Recovery Centre, in collaboration with the NSW Government.

The facility is the newest of its kind in the Northern Rivers with capacity to process up to 25,000 tonnes per annum of food and garden waste into quality-assured compost for reuse.

Product Benefits

- Project delivered within 2 years
- DA and EIS prepared within 3 months of contract commencement
- Local procurement prioritised

Sustainability Features

- 99KW solar power system
- Rainwater harvesting
- Wastewater reuse
- Cement replacements to reduce carbon emissions
- Offsite plant fabrication to reduce waste



The new, modular food and garden waste recycling facility is shown in this computer-generated video: <https://www.youtube.com/watch?v=AwsSHO7qvs0&feature=youtu.be>.



Kembla Grange Organics Processing Facilities (OPFs)

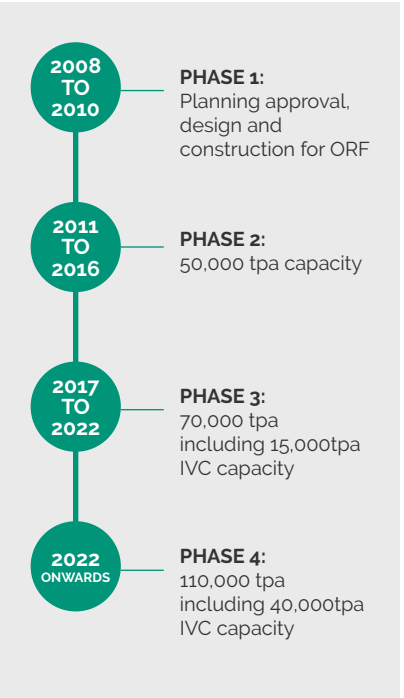
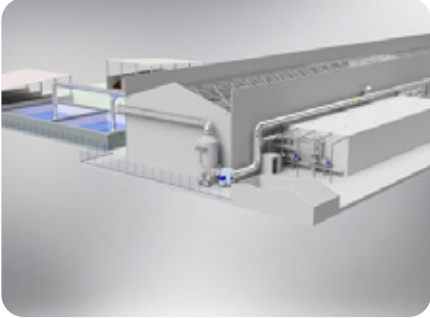
- CLIENTS:** Wollongong City Council, Kiama Municipal Council and Canterbury-Bankstown Council
- TOTAL PROJECT VALUE:** >\$10M
- INFRASTRUCTURE:** Transfer Station, Processing Building and In-Vessel Composting
- CONTRACT DURATION:** 5 to 10 Years
- COMBINED SITE CAPACITY:** 110,000 tpa

SOILCO's Kembla Grange Organics Recycling Facility (ORF) and Composting & Manufacturing Facility (CMF) are in close proximity to each other and their respective operations work interdependently.

The evolution of these facilities has matched the organics infrastructure requirements of the region for kerbside and commercial organics.

Network Highlights:

- Introduction of IVC allowed SOILCO to hygienise FOGO waste on site, reducing transport costs and emissions
- In-vessel composting technology maximises processing capacity within an efficient footprint
- On-site laboratory for internal testing and quality assurance processes
- Facility enables SOILCO to manufacture, warehouse and distribute quality assured compost to Council clients in 20 litre bags for the local community



Wogamia Composting & Manufacturing Facility (CMF)

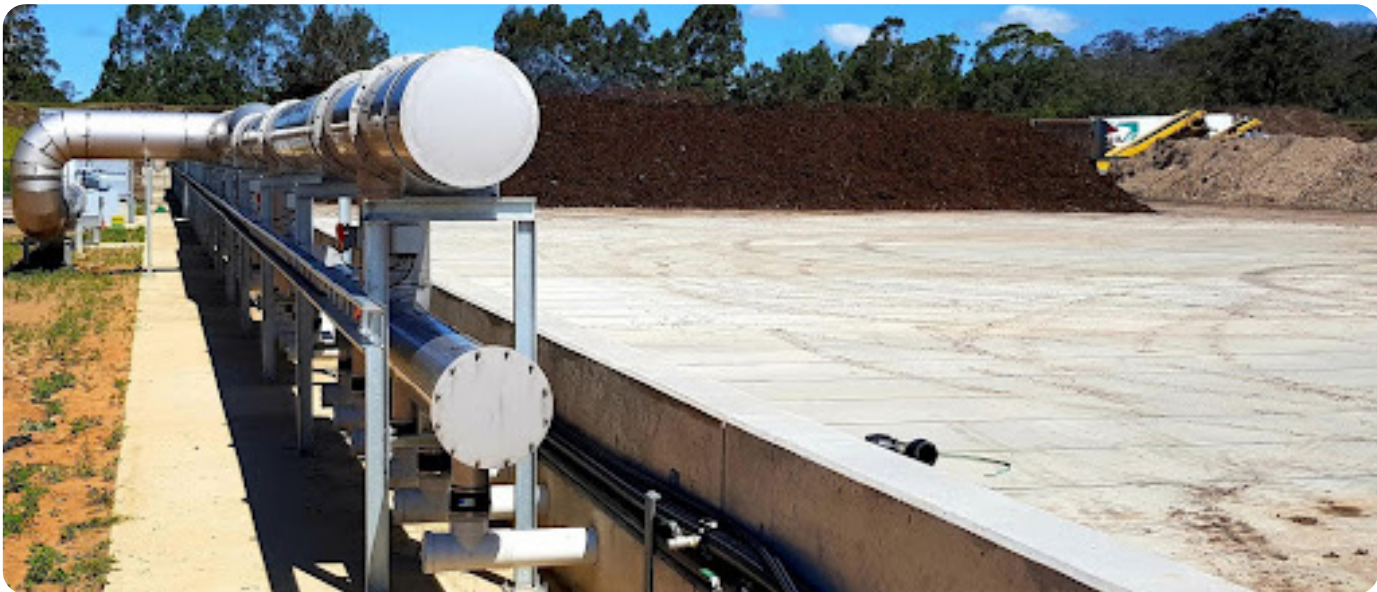
- CLIENT:** SOILCO Pty Ltd
- TOTAL PROJECT VALUE:** \$1.5M (Completed 2018)
- INFRASTRUCTURE:** Forced Aeration Static Pile Composting
- CONTRACT DURATION:** 10 Years
- SITE CAPACITY:** 98,000 tpa

SOILCO has successfully processed organic waste at the Wogamia Composting & Manufacturing Facility (CMF) near Nowra since 2001. In 2018, significant infrastructure improvements were implemented, including the conversion of turned piled (windrow) composting infrastructure into a 30,000 tpa forced aeration static pile (ASP) composting system for food and garden organics.

Project Highlights:

- Composting footprint reduced from 20,000 to 5,000m²
- Greater throughput capacity
- Additional process controls to manage air, water and electricity
- Improved monitoring to ensure end product compliance
- Reduced energy consumption and carbon footprint
- Additional rainwater harvesting capacity
- Reduced operating costs

The project was supported by the Environmental Trust as part of the NSW EPA's Waste Less, Recycle More initiative, funded from the waste levy.





SOILCO sets the
benchmark for
Australian organics
recycling facilities.



Contact Us

For all product enquiries, please
contact SOILCO head office.

sales@soilco.com.au
1300 254 443

The SOILCO Difference

- More than 35 years' experience
- Proven and reliable technologies
- Cost effective processing solutions
- In-house planning and project delivery
- Licensed facility network
- Certified product range
- Experienced management, technical and operational staff