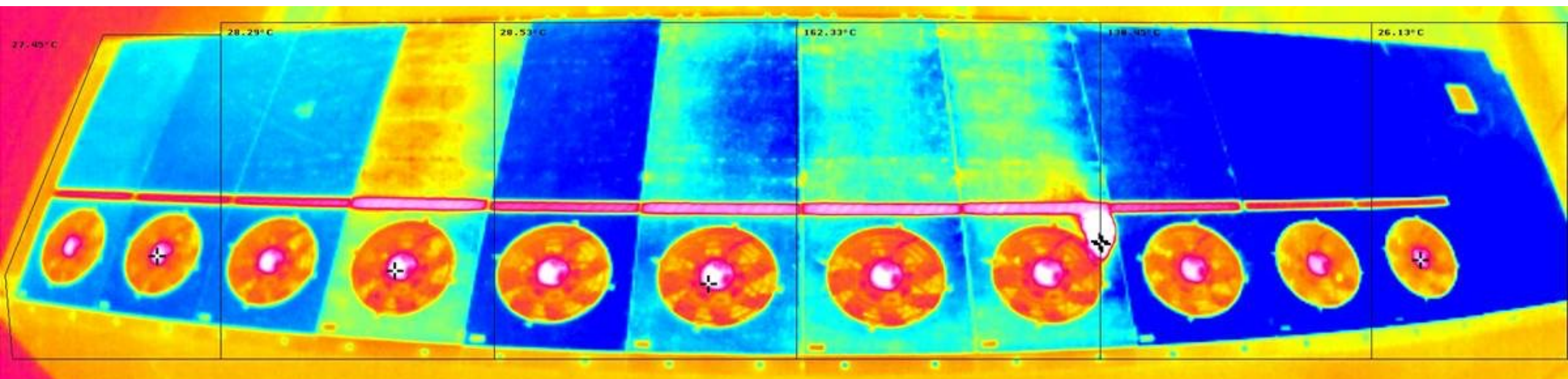


MOBOTIX -Product information & Demo clips - Fire at waste site in Sydney

Because Prevention is better than Extinction: MOBOTIX Thermal Detection.



SEE MORE. SEE EARLY. ACT!

When it comes down to it, every second counts. Then you have the advantage on your side when you see things that normally remain hidden. MOBOTIX Thermal Imaging Cameras give you exactly this edge. Integration into holistic solutions makes them even more efficient.



Table of Contents

1. Quick Overview about all new Products
2. Thermal Cameras: Scope of Application
3. Early Fire Detection and Prevention
4. Production Assurance
5. GDPR compliant Perimeter Protection
6. Important Links and Downloads

Notes: This document is intended for information and requirement planning exclusively for MOBOTIX partners and may not be published in this form (digitally or as a printout) - Delivery only to trade or commercial customers - Prices plus VAT ex works Langmeil, Germany - Subject to change without notice - MOBOTIX assumes no liability for technical errors, typographical errors or omissions – © MOBOTIX AG 2022 - MOBOTIX is a trademark of MOBOTIX AG registered in the European Union, the USA and other countries - All rights reserved.

MOBOTIX MSRP prices are recommended net ex works (EXW), ex factory in Germany. In some countries, MOBOTIX distributors have to apply locally higher sales prices due to import regulations/duties.

1.

QUICK OVERVIEW ABOUT ALL NEW PRODUCTS

1. Quick Overview about all new Products – Certified Thermal Camera Bundles



VdS certified Camera Bundles

Extremely Robust

Installation packages for MOBOTIX cameras based on the M16 have been approved by VdS for integration into fire alarm systems.



► [Details](#)

► [Data Sheet](#)

► [Quick Installation Guide](#)



EN 54-10 certified Camera Bundles

Extremely Versatile

Installation packages for MOBOTIX cameras based on the M16 / M73 and S74, certified according to EN 54-10.



► [Details](#)

► [Data Sheet](#)

► [Quick Installation Guide](#)



CNPP certified M73 Camera

Extremely Powerfull

Component selection to set up a CNPP certified Thermal Camera for early fire detection, based on the MOBOTIX M73.



57.22.221

► [Details](#)

► [Data Sheet](#)

► [Quick Installation Guide](#)



CNPP certified S74 Camera

Extremely Flexible

Component selection to set up a CNPP certified Thermal Camera for early fire detection, based on the MOBOTIX S74, the most flexible Camera System.



62.22.221

► [Details](#)

► [Data Sheet](#)

► [Quick Installation Guide](#)

1. Quick Overview about all new Products – New ECO Thermal Camera, ECO Thermal Sensor and Apps



p71 ECO Thermal

Economical but powerful

Inexpensive thermal image surveillance with an intelligent camera base and app capability: The first MOBOTIX ECO Thermal Camera for indoor use at best conditions.

► [Details](#)

► [Data Sheet](#)

► [Quick Installation Guide](#)



ECO Thermal Sensor

Limited to the Max

As an upgrade for existing perimeter protection applications in absolute darkness or to meet particularly data protection-compliant requirements - and at a low price.

► [Details](#)

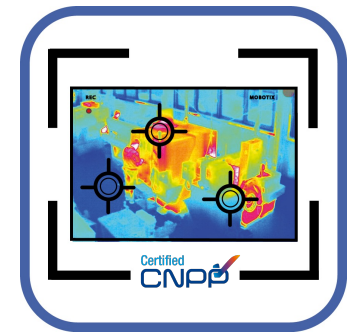


MOBOTIX Advanced Radiometry App

When you need to go fast

The app for detecting critical heat sources and spontaneous combustion and more with up to 20 individual measurement areas. Can be integrated into fire alarm systems and as a stand-alone solution for individual challenges.

► [Details](#)



MOBOTIX Thermal Heat Detection App

CNPP approved Camera by app

Upgrade an existing M73 Camera to a fully CNPP approved camera by adding a thermal sensor and installing this app. Sounds too good to be true? But it is!

► [Details](#)

1. Quick Overview about all new Products – More Products



Promotion Package

Social Media and PR

We have compiled a number of articles, advertisements and texts for you, which you can use free of charge for your advertising measures. As a partner, you can download this material for free use by clicking the link below.

► Download

SOFTWARE-UPDATE-TICKER

IoT-Firmware 7.3.1.51

Latest Update for MOBOTIX IoT cameras, required to run the latest Apps on MOBOTIX 7 based camera systems

DOWNLOAD / RELEASE NOTES: [DE](#) / [EN](#)

App-Paket Release 2022-11

Latest Certified Apps and Updates for MOBOTIX 7 based camera systems.

Requires latest IoT Firmware version.

Please ensure to stay up to date.

DOWNLOAD / RELEASE NOTES: [DE](#) / [EN](#)

MOVE-Firmware

MOVE cameras of the S6L series can now be connected directly to the MOBOTIX CLOUD via "MOBOTIX Cloud Connect Service". The bridge is no longer urgently required for this. In addition, the MQTT protocol is supported - the industry standard for industrial and smart home applications.

DOWNLOAD / RELEASE NOTES:

mb20220815NX: [DE](#) / [EN](#)

mb20220922SX: [DE](#) / [EN](#)

mb20220915UX: [DE](#) / [EN](#)

mb20220815RP: [DE](#) / [EN](#)

mb20220815RS: [DE](#) / [EN](#)

SOFTWARE-UPDATE-TICKER

MOVE NVR-Firmware

MOBOTIX MOVE NVRs can be integrated into MOBOTIX HUB as devices. This means that local MOVE NVR environments can be integrated into an overall HUB environment, provided that the latest MOBOTIX HUB Plug-Ins are installed. The MOBOTIX PTZ Keyboard is now natively supported in the MOBOTIX MOVE NVR and MOVE CMS.

DOWNLOAD / RELEASE NOTES:

mb20221101NVR816: [DE](#) / [EN](#)

mb20221020NVR64: [DE](#) / [EN](#)

MOBOTIX MOVE CMS

The MOBOTIX PTZ Keyboard is now natively supported in the MOBOTIX MOVE NVR.

DOWNLOAD / RELEASE NOTES:

mb20221028CMS: [DE](#) / [EN](#)

MOBOTIX HUB Plug-Ins

New Plug-Ins / Updates to SearchEngines, Configuration, VaxHelix, MobotixCloud

DOWNLOAD / RELEASE NOTES: [DE](#) / [EN](#)

1. Quick Overview about all new Products – What do you think?



YOUR FEEDBACK IS APPRECIATED

How do you like the latest MOBOTIX products?

When we launch new products, it is the culmination of a long process of creation, based on the needs of the market and our understanding of how automation and AI can support businesses worldwide.

Your feedback is essential and we ask you to share your thoughts with us via the following link.

Thank you very much!

► **Start Feedback**

(Time requirement max. 2 minutes)

2.

SCOPE OF APPLICATION

2. Scope of Application

Their efforts pay off quickly.

Thermal sensors expand the possibilities and areas of application of autonomous video surveillance in an unexpected way, protecting people and goods alike.

EARLY FIRE DETECTION



Key benefits:

- **Detect fire before it occurs**
- Identify and warn of potential hazards
- Initiate countermeasures in time
- Avoid personal injury
- Minimise physical damage
- Meet insurance requirements

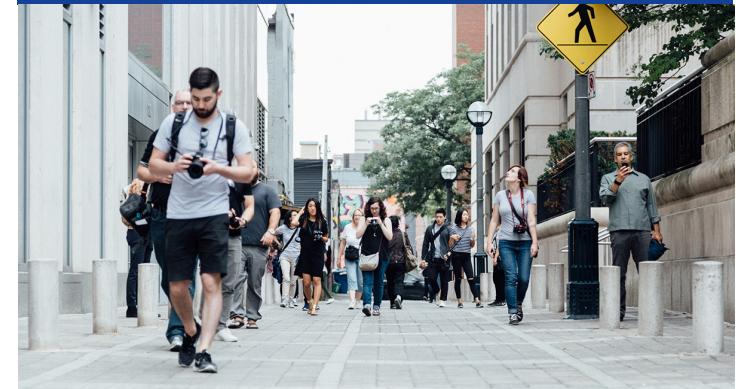
QUALITY ASSURANCE



Key benefits:

- Product and Quality Assurance
- Process and temperature monitoring
- Detect leaks (e.g. gas)
- Detect limits of wear
- Avoid consequential damage
- Robust hardware
- **Reduce costs**

SAFETY



Key benefits:

- GDPR compliant monitoring of public areas
- **Works even in complete darkness**
- Detect legitimate interest
- Video Recording with additional optical Sensor
- Can significantly reduce overall energy costs.
- **Upgrade for MOBOTIX Cameras available**

2. Scope of Application – Why MOBOTIX?

What makes the difference?

There are multiple IP cameras on the market that are equipped with **thermal sensors**. Nevertheless, we are convinced that our offer is the better choice for the following reasons:



- **Powerful Embedded Event Logic to fit individual requirements best**
- **Raw Data Support to support AI applications**
- MOBOTIX IoT cameras work **autonomously** and require neither a central server nor personnel. They detect situations, thresholds and even trends completely independently.
- Different events and alarms can trigger a variety of functions and **follow-up processes**.
- **AI-based apps** extend the native camera functions for individual needs, e.g. behavioural analysis, classification, data enrichment, etc.
- The **integration** into existing systems and the linking with industrial systems offer almost unlimited possibilities.

2. Scope of Application – Why MOBOTIX?

What makes the difference?

There are multiple IP cameras on the market that are equipped with **thermal sensors**. Nevertheless, we are convinced that our offer is the better choice for the following reasons:

MODULARITY



Existing MOBOTIX camera systems can be retrofitted or expanded with thermal sensors. This **saves time and money** with uncompromising results. We know no other manufacturer with this support.

DURABILITY



Just like our cameras themselves, the thermal modules used are among the **most robust** currently available. This means a low complaint rate and long-term maintenance-free operation. This is key to the MOBOTIX DNA.

SAFETY



We know what's inside because we produce in **Germany** and rely on long-term cooperation with our suppliers. No product leaves our hall untested. In addition, we summarise numerous cyber security measures, GDPR and NDAA with our Kaktus Concept.

2. Application Areas – MOBOTIX 7 Thermal Sensor Modules for S74 and M73 in Comparison

Model	P7 Thermal ECO Module	Other P7 thermal modules	Other P7 Thermal Radiometry Modules (TR Module)
MSRP*	1.599 EUR / 1.799 USD	CIF: 3.888 EUR / 4.019 USD	CIF: 4.478 EUR / 4.599 USD
Form factor	One mold for M73/S74 (size like optical MOBOTIX 7 sensor modules)	Three special forms (Thermal, PTMount Thermal, with front plate for M73)	Three special forms (Thermal, PTMount Thermal, with front plate for M73)
Detectable temperature range NETD	-40 to 330°C < 65 mK	-40 to 550°C 50 mK	-40 to 550°C 50 mK
Images/second	9 Hz	9 Hz standard (25 Hz on request)	9 Hz standard (25 Hz on request)
Thermal resolution	320 x 240	CIF: 336 x 252 VGA: 640 x 512	CIF: 336 x 252 VGA: 640 x 512
Lens angle (horizontal)	56°, 105°	CIF: 17°, 25°, 45° VGA: 32°, 45°, 69°, 90°, 18° as „Build-to-Order“	CIF: 17°, 25°, 45° VGA: 32°, 45°, 69°, 90°, 18° as „Build-to-Order“
thermal overlay	--	Yes	Yes
MxActivitySensor	Yes	Yes	Yes
Temperature measurement: Center Spot / Thermal Radiometry TR	-- / --	Yes / -	Yes / Yes
Event: Temperature range	--	--	Yes
Events: Rapid temperature rise	--	--	Yes
Export of Thermal RAW data	Yes	--	Yes

*MOBOTIX MSRP prices are recommended net sales prices Ex Works (EXW), ex works in Germany. In some countries, MOBOTIX distributors have to apply locally higher sales prices due to import regulations/duties.

Application Areas

- Perimeter Protection (short distance)
- Intrusion Detection
- Overheat Protection

Application Areas

- Perimeter Protection (long distance)
- Production Monitoring
- Intrusion Detection

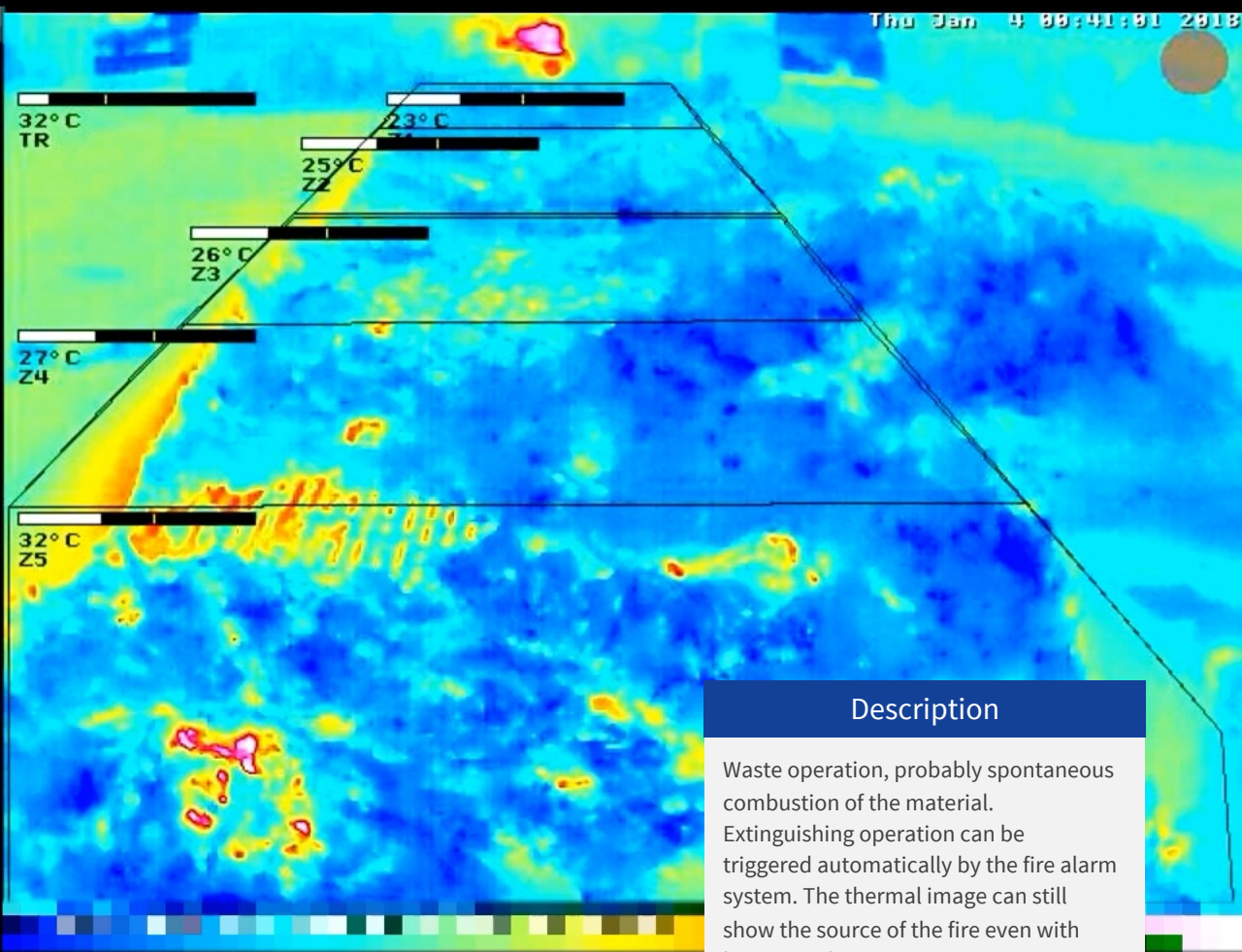
Application Areas

- Early Fire Protection
- Quality Assurance
- Heat Measurement

3.

EARLY FIRE DETECTION AND PREVENTION

3. Early Fire Detection and Prevention – Examples



Description
Waste operation, probably spontaneous combustion of the material. Extinguishing operation can be triggered automatically by the fire alarm system. The thermal image can still show the source of the fire even with heavy smoke or water vapour.

3. Early Fire Detection and Prevention – Your Advantages with MOBOTIX

Using MOBOTIX cameras for **Early Fire Detection** is worthwhile.
We tell you why.

FEATURE	ADVANTAGE	BENEFIT
Most precise Thermal Sensors	Rapid response capability with multiple escalation levels. Activates much earlier than optical sensors or flue gas sensors.	Reduced false alarms even in difficult environmental conditions. Enables to prevent instead of extinction.
Robust Housing and Components	Very long service life of the system and reliable results	Very low maintainance efforts
Open MOBOTIX system platform	Easy integration to Fire Alarm Systems	Enhances fire alarm systems and can minimise damage even further.
Recognised or certified products according to VdS, EN 54-10 and CNPP	Proven functionality by independent testing institutions	Full compliance with the insurance conditions

EARLY FIRE DETECTION



Key benefits:

- **Detect fire before it occurs**
- Identify and warn of potential hazards
- Initiate countermeasures in time
- Avoid personal injury
- Minimise physical damage
- Meet insurance requirements

3. Early Fire Detection and Prevention – New Products



React! Before a fire occurs.

In order to obtain full insurance cover in the event of damage, it is often necessary to use certified products within a fire alarm system. For the various specifications, we provide you with recognised packages that can greatly expand the response capability of a fire alarm system. By detecting critical heat sources before fire, smoke or fire gases even occur, damage can be avoided or their effects can often be significantly reduced.

No other IP camera manufacturer has such a wide range of certified thermal cameras for early fire detection.



VdS certified Bundles

MOBOTIX M16 VdS

Everything you need to set up a VdS-approved thermal imaging camera for early fire detection, now in one package. Play it safe with the award winner!



G 222015

► [Details](#)

► [Data Sheet](#)

► [Quick Installation Guide](#)



EN 54-10 certified Bundles

MOBOTIX M16 / M73 / S74

Our top models are now available with certified reliability and suitability for early fire detection in fire alarm systems and as a stand-alone solution.



► [Details](#)

► [Data Sheet](#)

► [Quick Installation Guide](#)



CNPP certified Products

MOBOTIX M73 CNPP approved

Choose the combination of components that suits your project best, add the app and get a CNPP approved camera system.



57.22.221 / 62.22.221

► [Details](#)

► [Data Sheet](#)

► [Quick Installation Guide](#)

3.1 Early Fire Detection and Prevention – VdS certified Bundles



GIT
SECURITY
AWARD
2023
WINNER



G 222015

Award Winning Fire Detection and Prevention Camera Bundle – ready for integration.

Makes excellent Fire Alarm Systems even better.

In comparison to the usual sensors and fire detectors as well as optical detection systems, the MOBOTIX Thermal VdS Bundle offers several advantages and can be operated both as a stand-alone solution and as an integral component of a comprehensive fire alarm system:

- Detects fires even before they occur
- Up to 20 measurement windows simultaneously from up to 60 m away
- Any number of escalation levels
- Makes fire sources and embers visible even when smoke and steam make visibility impossible
- Works even in total darkness

Reduce your customers' risks even further and take advantage of the innovative advantage of MOBOTIX Technology.

Besonderheiten

The Bundle contains:

- MOBOTIX M16 Thermal TR camera (2nd generation)
- Firmware Mx-FW-VDS-UP
- Mx-OPT-RS1-EXT
- Mx-Overvoltage-Protection-Box-LSA
- Mx-OPT-NPA1-EXT

Bundle available with 17° / 25° / 45° degree horizontal angle of view!

Distribution to trained sales partners only!

In accordance with the requirements imposed on us by the VdS, we can only supply the VdS bundles to partners who have previously been trained by us accordingly.

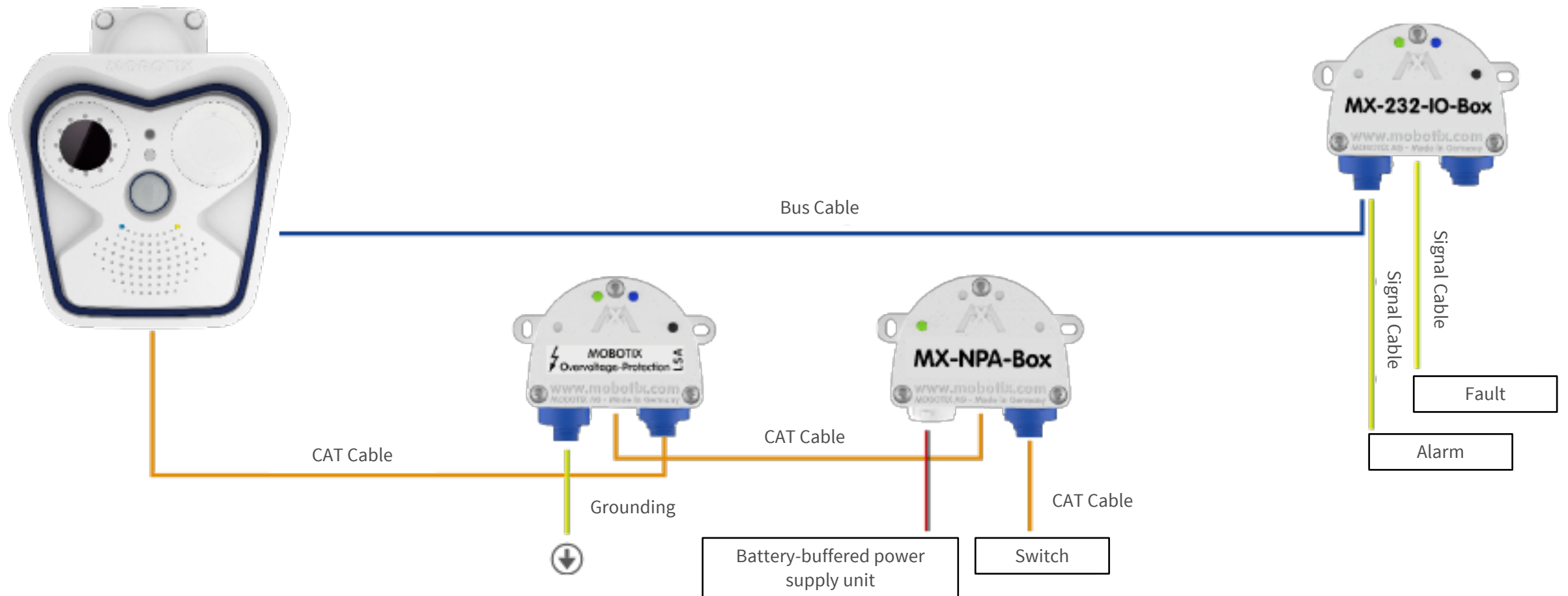
Book your VdS Training right away!

► [Register for VdS Training](#)

► [Datasheet](#)

► [Quick Installation Guide](#)

3.1 Early Fire Detection and Prevention – VdS certified Bundles – Contents and Instructions



ATTENTION: Additional installation of an optical sensor is currently not permitted. Loss of certification would be the consequence!

3.1 Early Fire Detection and Prevention – VdS certified Bundles – Order Information

MOBOTIX M16B (45°)		
Order Number	Description	MSRP Price* / **
M16B Thermal Camera TR, 50 mK, R079 (45°) - VDS-Bundle Mx-M16TB-R079-VDS	VdS bundle - IP thermal imaging camera TR with germanium lens: B079 equivalent, horizontal/vertical image angle 45°/32° - ONVIF-compliant Mx6 system platform (2nd generation) with H.264, MxPEG+ and M-JPEG - Thermal Radiometry (TR): calibrated thermal image sensor, detects critical temperature thresholds in the measuring range between 50° and 200°C - NETD typ. 50 mK, <79 mK, IR range 7.5 to 13.5 microns, uncooled microbolometer, up to 9 fps, 336 x 252 pixels (upscalable to max. 6MP) - Optional 6MP optical sensor module (can be ordered separately) - IP66/IK07, -40 to 60 °C - Internal DVR: 4 GB microSD - System components: Loudspeaker and microphone (in housing), PIR sensor, temperature sensor, MxActivitySensor, vibration sensor - VarioFlex wall mount (expandable with additional ceiling mount MX-DH-M24-SecureFlex and pole mount MX-MH-SecureFlex-ESWS), Ethernet patch cable 0.5 m - Interfaces: Ethernet 10/100 (RJ45), MxBus, USB; I/O and RS232 via additional MX Interface Box - Incl. 1 dummy module (MX-SM-Blind-PW) - Scope of delivery: Thermal camera, Mx-OPT-RS1-EXT, Mx-Overvoltage-Protection-Box-LSA, Mx-OPT-NPA1-EXT, firmware Mx-FW-VDS-UP - Price on request	<i>Please contact your account manager</i> <i>Distribution to trained sales partners only!</i> Register for VdS training here.

*MOBOTIX MSRP prices are recommended net sales prices Ex Works (EXW), ex works in Germany. In some countries, MOBOTIX distributors have to apply locally higher sales prices due to import regulations/duties.

** Please note that the prices for these products will increase with effect from 01 February 2023 (see price increase notification November 2022).

3.1 Early Fire Detection and Prevention – VdS certified Bundles – Order Information

MOBOTIX M16B (25°)		
Order Number	Description	MSRP Price* / **
M16B Thermal Camera TR, 50 mK, R119 (25°) - VDS-Bundle Mx-M16TB-R119-VDS	VdS bundle - IP thermal imaging camera TR with germanium lens: B119 equivalent, horizontal/vertical image angle 25°/19° - ONVIF-compliant Mx6 system platform (2nd generation) with H.264, MxPEG+ and M-JPEG - Thermal Radiometry (TR): calibrated thermal image sensor, detects critical temperature thresholds in the measuring range between 50° and 200°C - NETD typ. 50 mK, <79 mK, IR range 7.5 to 13.5 microns, uncooled microbolometer, up to 9 fps, 336 x 252 pixels (upscalable to max. 6MP) - Optional 6MP optical sensor module (can be ordered separately) - IP66/IK07, -40 to 60 °C - Internal DVR: 4 GB microSD - System components: Loudspeaker and microphone (in housing), PIR sensor, temperature sensor, MxActivitySensor, vibration sensor - VarioFlex wall mount (expandable with additional ceiling mount MX-DH-M24-SecureFlex and pole mount MX-MH-SecureFlex-ESWS), Ethernet patch cable 0.5 m - Interfaces: Ethernet 10/100 (RJ45), MxBus, USB; I/O and RS232 via additional MX Interface Box - Incl. 1 dummy module (MX-SM-Blind-PW) - Scope of delivery: Thermal camera, Mx-OPT-RS1-EXT, Mx-Overvoltage-Protection-Box-LSA, Mx-OPT-NPA1-EXT, firmware Mx-FW-VDS-UP - Price on request	<p><i>Please contact your account manager</i></p> <p><i>Distribution to trained sales partners only!</i></p> <p><u>Register for VdS training here.</u></p>

*MOBOTIX MSRP prices are recommended net sales prices Ex Works (EXW), ex works in Germany. In some countries, MOBOTIX distributors have to apply locally higher sales prices due to import regulations/duties.

** Please note that the prices for these products will increase with effect from 01 February 2023 (see price increase notification November 2022).

3.1 Early Fire Detection and Prevention – VdS certified Bundles – Order Information

MOBOTIX M16B (17°)		
Order Number	Description	MSRP Price* / **
M16B Thermal Camera TR, 50 mK, R237 (17°) - VDS-Bundle Mx-M16TB-R237-VDS	VdS bundle - IP thermal imaging camera TR with germanium lens: B237 equivalent, horizontal/vertical image angle 17°/13° - ONVIF-compliant Mx6 system platform (2nd generation) with H.264, MxPEG+ and M-JPEG - Thermal Radiometry (TR): calibrated thermal image sensor, detects critical temperature thresholds in the measuring range between 50° and 200°C - NETD typ. 50 mK, <79 mK, IR range 7.5 to 13.5 microns, uncooled microbolometer, up to 9 fps, 336 x 252 pixels (upscalable to max. 6MP) - Optional 6MP optical sensor module (can be ordered separately) - IP66/IK07, -40 to 60 °C - Internal DVR: 4 GB microSD - System components: Loudspeaker and microphone (in housing), PIR sensor, temperature sensor, MxActivitySensor, vibration sensor - VarioFlex wall mount (expandable with additional ceiling mount MX-DH-M24-SecureFlex and pole mount MX-MH-SecureFlex-ESWS), Ethernet patch cable 0.5 m - Interfaces: Ethernet 10/100 (RJ45), MxBus, USB; I/O and RS232 via additional MX Interface Box - Incl. 1 dummy module (MX-SM-Blind-PW) - Scope of delivery: Thermal camera, Mx-OPT-RS1-EXT, Mx-Overvoltage-Protection-Box-LSA, Mx-OPT-NPA1-EXT, firmware Mx-FW-VDS-UP - Price on request	<p><i>Please contact your account manager</i></p> <p><i>Distribution to trained sales partners only!</i></p> <p><u>Register for VdS training here.</u></p>

*MOBOTIX MSRP prices are recommended net sales prices Ex Works (EXW), ex works in Germany. In some countries, MOBOTIX distributors have to apply locally higher sales prices due to import regulations/duties.

** Please note that the prices for these products will increase with effect from 01 February 2023 (see price increase notification November 2022).

3.2 Early Fire Detection and Prevention – EN 54-10 certified Bundles



Wide Range of Fire Detection and Prevention Cameras with tested suitability.

German thoroughness as a seal of quality.

If tested quality "Made in Germany" is needed that reliably detects fires - even before they occur, before smoke develops and measurable gases are produced - then there is no getting around this camera. Depending on the application, our three top models with EN 54-10 certification are available.

- 3 MOBOTIX Cameras with EN 54-10 approval available:
 - **MOBOTIX M16:** For one thermal sensor module
 - **MOBOTIX M73:** For one thermal sensor module
 - **MOBOTIX S74:** For up to two thermal sensor modules (built-in)
- Additional optical sensors possible. This makes video recording of alarms possible, e.g. to secure evidence and to distinguish between arson and accident.
- Detects fires even before they occur
- Up to 20 measurement windows simultaneously from up to 25 m away

Reduce your customers' risks even further and take advantage of the innovative advantage of MOBOTIX Technology.

THE MOST IMPORTANT:

- EN 54-10 product certification
- Complies with the EU Construction Products Regulation
- This allows individual composition of the required camera system.
- **Additional optical sensor possible**
- Central registration of sold certified cameras at MOBOTIX
- Requires EN 54-4 certified power supply

► [Data Sheets](#)

► [Quick Installation Guide](#)

3.2 Early Fire Detection and Prevention – EN 54-10 certified Bundles – Order Information

MOBOTIX M16 Camera		
Order Number	Description	
Mx-M16TB-R079-EN54	M16B Thermal Camera TR, 50 mK, R079 (45°) - EN54-Bundle	
Mx-M16TB-R119-EN54	M16B Thermal Camera TR, 50 mK, R119 (25°) - EN54-Bundle	
Mx-M16TB-R237-EN54	M16B Thermal Camera TR, 50 mK, R237 (17°) - EN54-Bundle	

M16 Bundle consisting of M16TR

*MOBOTIX MSRP prices are recommended net sales prices Ex Works (EXW), ex works in Germany. In some countries, MOBOTIX distributors have to apply locally higher sales prices due to import regulations/duties.

** Please note that the prices for these products will increase with effect from 01 February 2023 (see price increase notification November 2022).

3.2 Early Fire Detection and Prevention – EN 54-10 certified Bundles – Order Information

MOBOTIX M73 Camera		
Order Number	Description	
Mx-M73TA-B336R100-EN54	M73A Thermal Camera TR(B), CIF, R100 (45°) - EN54 Bundle	
Mx-M73TA-B336R150-EN54	M73A Thermal Camera TR(B), CIF, R150 (25°) - EN54 Bundle	
Mx-M73TA-B336R280-EN54	M73A Thermal Camera TR(B), CIF, R280 (17°) - EN54 Bundle	
Mx-M73TA-B640R050-EN54	M73A Thermal Camera TR(B), VGA, R050 (90°) - EN54 Bundle	
Mx-M73TA-B640R080-EN54	M73A Thermal Camera TR(B), VGA, R080 (69°) - EN54 Bundle	
Mx-M73TA-B640R100-EN54	M73A Thermal Camera TR(B), VGA, R100 (45°) - EN54 Bundle	
Mx-M73TA-B640R150-EN54	M73A Thermal Camera TR(B), VGA, R150 (32°) - EN54 Bundle	

M73 Bundles consisting of:

- Mx-M73A-RJ45
- Mx-O-M73TB-336/640Rxxx
- Mx-F-MSA
- Mx-O-M7SA-Blind

*MOBOTIX MSRP prices are recommended net sales prices Ex Works (EXW), ex works in Germany. In some countries, MOBOTIX distributors have to apply locally higher sales prices due to import regulations/duties.

** Please note that the prices for these products will increase with effect from 01 February 2023 (see price increase notification November 2022).

3.2 Early Fire Detection and Prevention – EN 54-10 certified Bundles – Order Information

MOBOTIX S74 Camera		
Order Number	Description	
Mx-S74TA-B336R100-EN54	S74A Thermal Camera TR(B), CIF, R100 (45°) - EN54 Bundle	
Mx-S74TA-B336R150-EN54	S74A Thermal Camera TR(B), CIF, R150 (25°) - EN54 Bundle	
Mx-S74TA-B336R280-EN54	S74A Thermal Camera TR(B), CIF, R280 (17°) - EN54 Bundle	
Mx-S74TA-B640R050-EN54	S74A Thermal Camera TR(B), VGA, R050 (90°) - EN54 Bundle	
Mx-S74TA-B640R080-EN54	S74A Thermal Camera TR(B), VGA, R080 (69°) - EN54 Bundle	
Mx-S74TA-B640R100-EN54	S74A Thermal Camera TR(B), VGA, R100 (45°) - EN54 Bundle	
Mx-S74TA-B640R150-EN54	S74A Thermal Camera TR(B), VGA, R150 (32°) - EN54 Bundle	

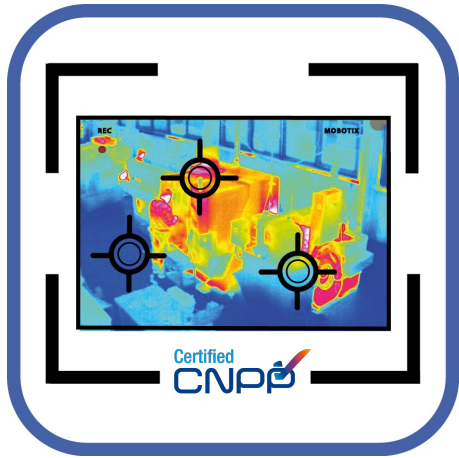
S73 Bundles consisting of:

- Mx-S74A
- Mx-F-S7A-RJ45-VDC
- Mx-O-M7SB-336/640RPxxx
- Mx-F-MSA
- Mx-M-PTMA
- Mx-A-S7A-CBL03-AN

*MOBOTIX MSRP prices are recommended net sales prices Ex Works (EXW), ex works in Germany. In some countries, MOBOTIX distributors have to apply locally higher sales prices due to import regulations/duties.

** Please note that the prices for these products will increase with effect from 01 February 2023 (see price increase notification November 2022).

3.3 Early Fire Detection and Prevention – CNPP approved Products – MOBOTIX Thermal Heat Detection



Exclusive Thermal App for CNPP certified M73 TR and S7 M73 TR und S74 TR only.

Approved. Suitable for fire detection and reliable monitoring of critical areas.

Monitor multiple temperature ranges with high accuracy on a single camera image and define different escalation levels. Connection to existing systems and integration into projects is a breeze.

- Definition of up to 20 temperature measurement ranges within the camera's field of view
- Individual calibration of each temperature measurement range (e.g. emissivity)
- Temperature events when defined temperature thresholds are exceeded
- Detection of physical manipulation of the thermal sensor (e.g. covering the sensor)

Required for the installation of a CNPP-certified thermal camera.
Also available to upgrade existing camera systems.*

* Please contact your Account Manager for detailed information.

THE MOST IMPORTANT:

- Designed for M73 / S74
- Thermal Radiometry Sensor (TR) required
- Dual / Multi Sensor usage
- MxMessageSystem
- MOBOTIX events
- ONVIF events
- CNPP 19005 compliant

Integration:

- Mx ManagementCenter 2.7.x
- Mx HUB 2021 R1
- Generic 3rd party integration through XML, JSON and MODBUS/TCP

► [Register for CNPP Training](#)

► [Details](#)

3.3 Early Fire Detection and Prevention – CNPP certified Products – M73



57.22.221

CNPP certified Fire Detection and Prevention Camera – trustworthy and individual.

Procure new or upgrade existing cameras. It's up to you.

The MOBOTIX M73 camera with TR sensor, the associated app and certified power supply unit is CNPP-certified and can be integrated into a fire alarm system. If you already have an M73 installed, you can simply upgrade the components and install the MOBOTIX Thermal Heat Detection App - done. Additional optical sensors can also be used in the same device without invalidating the certification.

- Detects fires even before they occur
- Up to 20 measurement windows simultaneously from up to 72 m away
- Any number of escalation levels
- Makes fire sources and embers visible even when smoke and steam make visibility impossible
- Works even in total darkness

The most flexible but certified Fire Detection and Prevention Camera on the market! Now available!

THE MOST IMPORTANT:

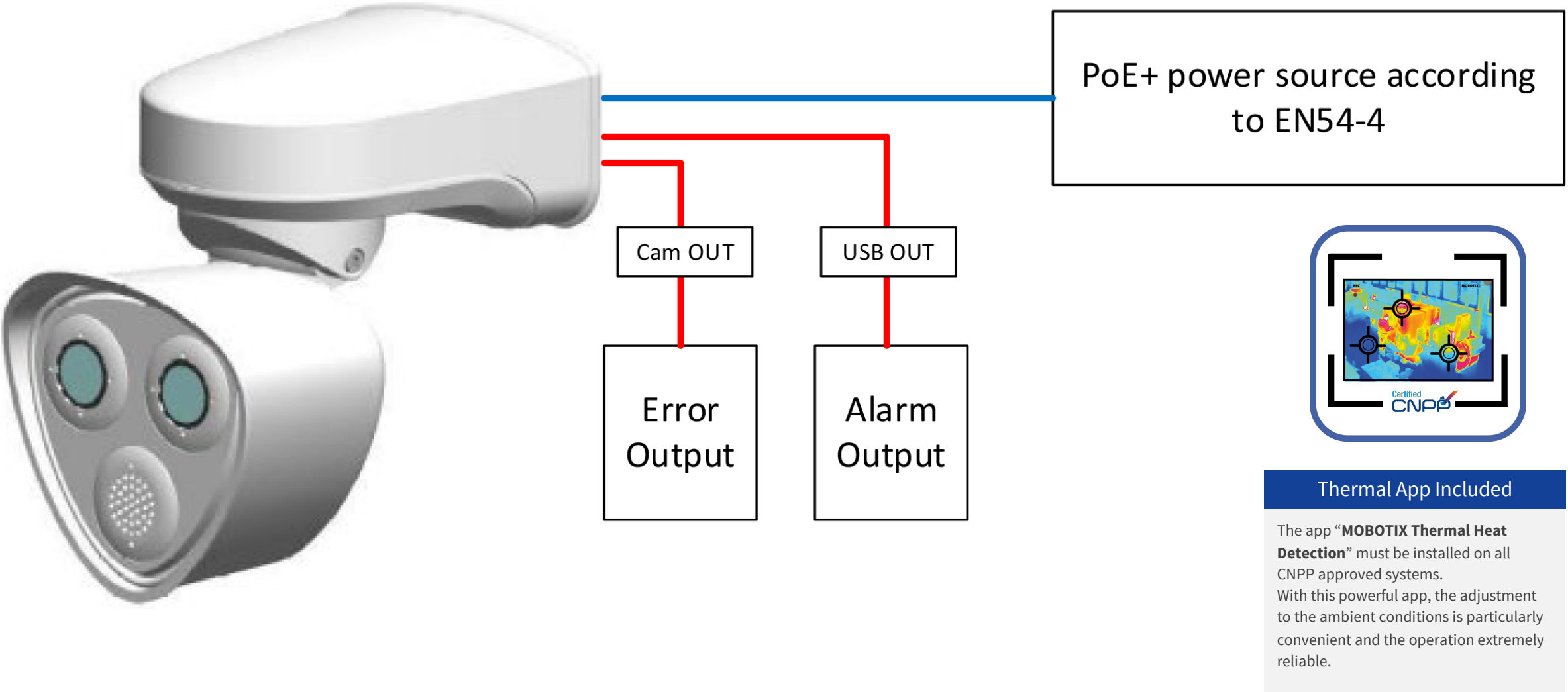
- CNPP product certification for camera and app included
- This allows individual composition of the required camera system.
- Upgrade of existing cameras possible
- **Additional optical sensor possible**
- Central registration of sold certified cameras at MOBOTIX
- Requires EN 54-4 certified power supply

► [Data Sheet](#)

► [Register for CNPP Training](#)

► [Quick Installation Guide](#)

3.3 Early Fire Detection and Prevention – CNPP – M73 Instructions



3.3 Early Fire Detection and Prevention – CNPP certified Products – Order Information M73

MOBOTIX Thermal Heat Detection App (CNPP approved)		
Order Number	Description	
Mx-APP-MX-THD <i>This app is not part of the app package but will be provided on request. Please contact your responsible account manager.</i>	<ul style="list-style-type: none">• Extension of the temperature measurement functions of MOBOTIX Thermal Radiometry cameras (according to CNPP France 19005 certification)• Definition of up to 20 temperature measurement areas within the field of view of the camera• individual calibration of each temperature measurement area (e.g. emissivity values)• Temperature events when defined temperature thresholds are exceeded• Detection of physical manipulation of the thermal sensor (e.g. sensor covered)• MOBOTIX events via MxMessageSystem The MOBOTIX Thermal Heat Detection App is required in any case to fulfill the requirements for CNPP France 19005 certification (Thermal Camera Heat Detection Systems)	

MOBOTIX Camera		
Order Number	Description	
Mx-M73A-LSA	M73 Body with LSA Connector Box (white)	
Mx-M73A-LSA-wg	M73 Body with LSA Connector Box (white-gray)	
Mx-M73A-RJ45	M73 Body with RJ45 Connector Box (white)	
Mx-M73A-RJ45-wg	M73 Body with RJ45 Connector Box (white-gray)	

*MOBOTIX MSRP prices are recommended net sales prices Ex Works (EXW), ex works in Germany. In some countries, MOBOTIX distributors have to apply locally higher sales prices due to import regulations/duties.

3.3 Early Fire Detection and Prevention – CNPP certified Products – Order Information M73

MOBOTIX Sensors and Accessories		
Order Number	Description	
Mx-O-M73TB-336R100	Thermal module 336-R100 with front plate for M73 (B model)	
Mx-O-M73TB-336R150	Thermal module 336-R150 with front plate for M73 (B model)	
Mx-O-M73TB-336R280	Thermal module 336-R280 with front plate for M73 (B model)	
Mx-O-M73TB-640R050	Thermal module 640-R050 with front plate for M73 (B model)	
Mx-O-M73TB-640R080	Thermal module 640-R080 with front plate for M73 (B model)	
Mx-O-M73TB-640R100	Thermal module 640-R100 with front plate for M73 (B model)	
Mx-O-M73TB-640R150	Thermal module 640-R150 with front plate for M73 (B model)	

*MOBOTIX MSRP prices are recommended net sales prices Ex Works (EXW), ex works in Germany. In some countries, MOBOTIX distributors have to apply locally higher sales prices due to import regulations/duties.

** Please note that the prices for these products will increase with effect from 01 February 2023 (see price increase notification November 2022).

3.4 Early Fire Detection and Prevention – CNPP approved Products – S74

The most flexible MOBOTIX camera now also CNPP certified.

Highly integratable in every respect. Technically and organisationally.

Like the M73, existing systems can be converted into a CNPP-certified fire detector via app and with a suitable thermal sensor, even if this designation does not quite do justice to its performance. With its versatile connections and sensor housings, however, the S74 scores particularly well in complex spatial conditions and wherever a single viewing angle is simply not enough.

- Detects fires even before they occur
- Up to 20 measurement windows simultaneously from up to 72 m away
- Any number of escalation levels
- Makes fire sources and embers visible even when smoke and steam make visibility impossible
- Works even in complete darkness

The most flexible and certified early fire detection and prevention camera on the market! Now available!



62.22.221

THE MOST IMPORTANT:

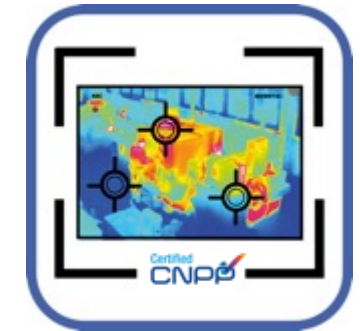
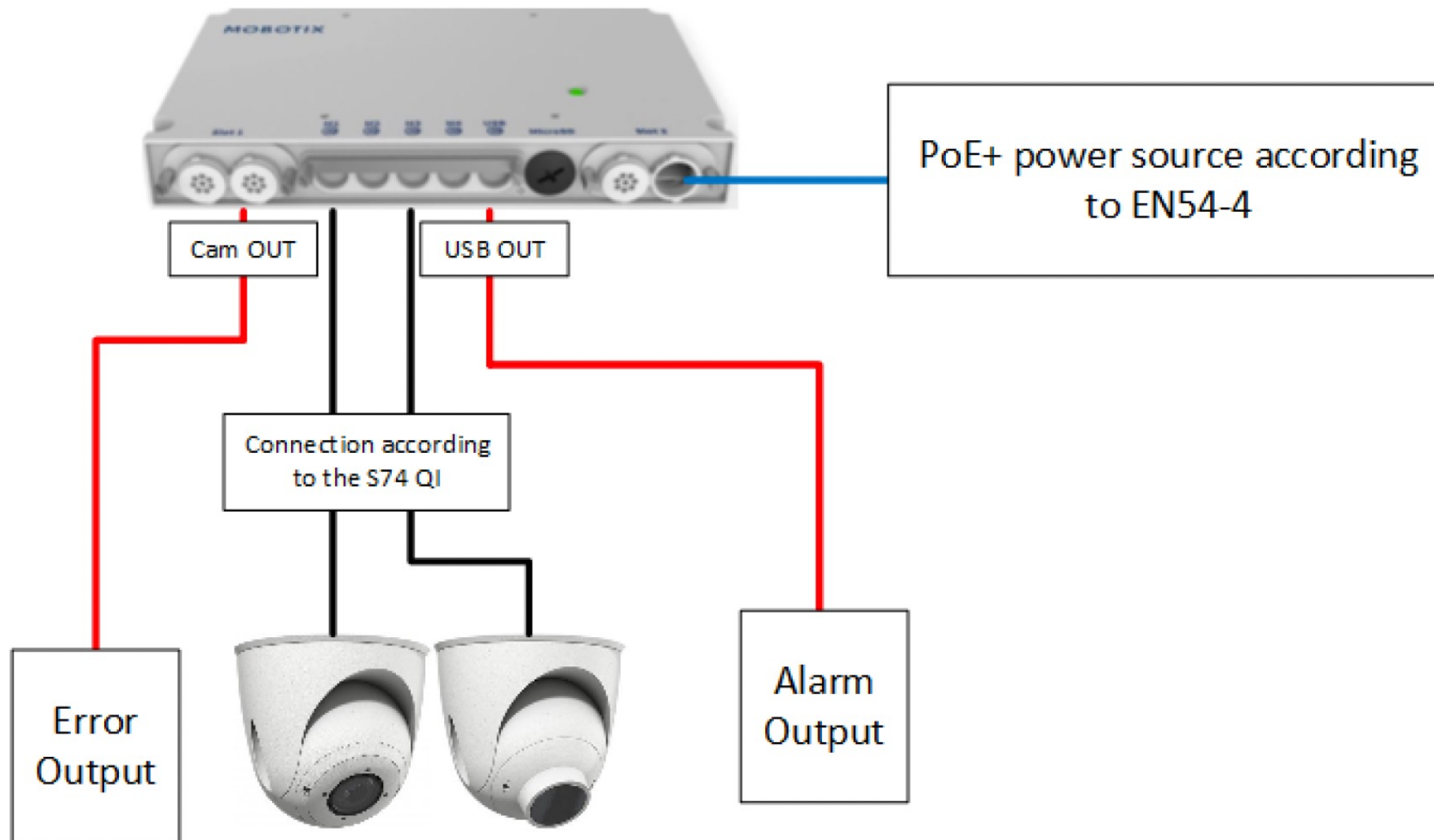
- CNPP product certification for camera and app included.
- Individual composition of the desired camera system.
- Upgrade of existing cameras possible
- **Additional optical sensor possible**
- Central registration of sold certified cameras at MOBOTIX
- Requires EN 54-4 certified power supply

► [Data Sheet](#)

► [Register for CNPP Training](#)

► [Quick Installation Guide](#)

3.4 Early Fire Detection and Prevention – CNPP approved Products – M73 Anleitung



Thermal App Included

The app "**MOBOTIX Thermal Heat Detection**" must be installed on all CNPP approved systems. With this powerful app, the adjustment to the ambient conditions is particularly convenient and the operation extremely reliable.

3.4 Early Fire Detection and Prevention – CNPP approved Products – Order Information S74

MOBOTIX Thermal Heat Detection App (CNPP)		
Order Number	Beschreibung	
<div>Mx-APP-MX-THD</div> <div><i>This app is not part of the app package but will be provided on request. Please contact your responsible account manager.</i></div>	<div><ul style="list-style-type: none">• Extension of the temperature measurement functions of MOBOTIX thermal imaging cameras (according to CNPP France 19005 certification)• Definition of up to 20 temperature measurement ranges within the camera's field of view• Individual calibration of each temperature measurement range (e.g. emission values)• Temperature events when defined temperature thresholds are exceeded• Detection of physical manipulation of the heat sensor (e.g. covering the sensor)• MOBOTIX events via MxMessageSystem</div> <div>The MOBOTIX Thermal Imaging Camera App is required in any case to meet the requirements for certification according to CNPP France 19005 (Thermal Imaging Camera Thermal Detection Systems).</div>	
MOBOTIX M73 Kamera		
Order Number	Beschreibung	
Mx-S74A	S74 Body for 4 Sensor- and Functional Modules	
Mx-F-S7A-RJ45-VDC	S74 RJ45 Network slide in board with 12/24 VDC Power Supply	
Mx-F-S7A-INT01	S74 IO Slide in Board	

*MOBOTIX MSRP prices are recommended net sales prices Ex Works (EXW), ex works in Germany. In some countries, MOBOTIX distributors have to apply locally higher sales prices due to import regulations/duties.

3.4 Early Fire Detection and Prevention – CNPP approved Products – Order Information S74

MOBOTIX Sensoren und Zubehör		
Order Number	Beschreibung	
Mx-O-M7SB-336RP100	S7x PTMount Thermal 336-R100 (B model)	
Mx-O-M7SB-336RP150	S7x PTMount Thermal 336-R150 (B model)	
Mx-O-M7SB-336RP280	S7x PTMount Thermal 336-R280 (B model)	
Mx-O-M7SB-336RS100	S7x Thermal Module 336-R100 (B model)	
Mx-O-M7SB-336RS150	S7x Thermal Module 336-R150 (B model)	
Mx-O-M7SB-336RS280	S7x Thermal Module 336-R280 (B model)	
Mx-O-M7SB-640RP050	S7x PTMount Thermal 640-R050 (B model)	
Mx-O-M7SB-640RP080	S7x PTMount Thermal 640-R080 (B model)	
Mx-O-M7SB-640RP100	S7x PTMount Thermal 640-R100 (B model)	
Mx-O-M7SB-640RP150	S7x PTMount Thermal 640-R150 (B model)	
Mx-O-M7SB-640RS050	S7x Thermal Module 640-R050 (B model)	
Mx-O-M7SB-640RS080	S7x Thermal Module 640-R080 (B model)	
Mx-O-M7SB-640RS100	S7x Thermal Module 640-R100 (B model)	
Mx-O-M7SB-640RS150	S7x Thermal Module 640-R150 (B model)	

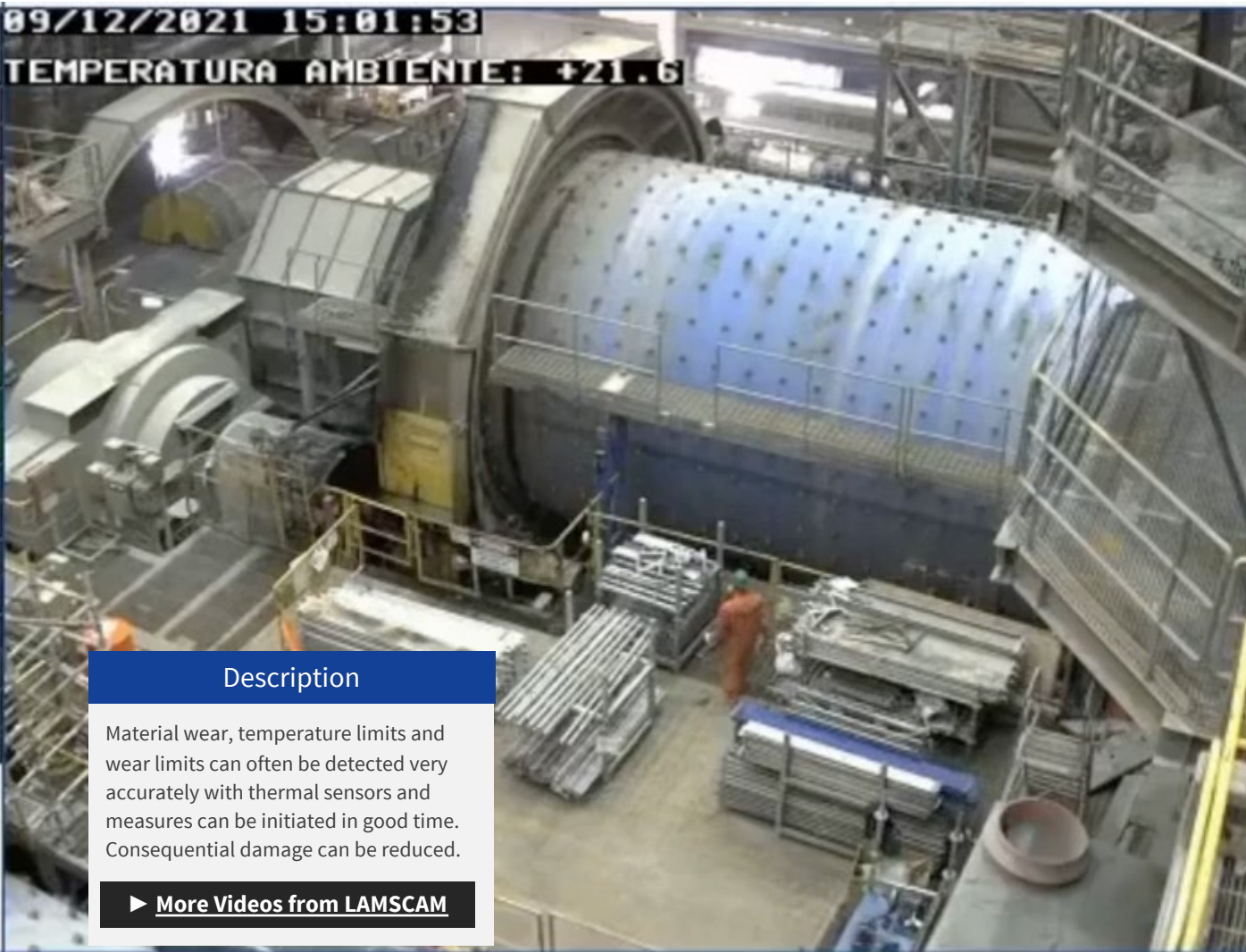
*MOBOTIX MSRP prices are recommended net sales prices Ex Works (EXW), ex works in Germany. In some countries, MOBOTIX distributors have to apply locally higher sales prices due to import regulations/duties.

** Please note that the prices for these products will increase with effect from 01 February 2023 (see price increase notification November 2022).

4.

QUALITY ASSURANCE

4. Quality Assurance – Examples



4. Quality Assurance – Your Advantages with MOBOTIX

Secure production lines and reduce material usage.
Save time and money.

FEATURE	ADVANTAGE	BENEFIT
Robustness of MOBOTIX products.	Can also be used in difficult environmental conditions with extreme temperature fluctuations and dust, moisture and dirt.	Reliable operation under extreme conditions.
Immediately determine if machine parts, bearings or lines reach a critical temperature level.	Reliably detect wear limits, overload and damage through concrete measured values.	Prevent production downtime, schedule maintenance in good time and avoid consequential damage. Save costs.
Monitor the production process and measure the temperature of each individual workpiece logged.	Immediately detect irregularities and out-of-tolerance areas and initiate multi-stage corrective actions. Automated.	Ensure product quality, avoid rejects and complaints and reduce material usage to a significant extent.
Monitor utility lines, critical capital equipment and sensitive areas with thermal technology.	Leaks, overheating, undersupply and leaving tolerance ranges can be detected immediately and multi-stage countermeasures can be initiated.	Protect your employees, your infrastructure and ensure the continuity of your business.

OPERATIONAL PROTECTION



Key benefits:

- Product and Quality Assurance
- Process and temperature monitoring
- Detect leaks (e.g. gas)
- Detect limits of wear
- Avoid consequential damage
- Robust hardware
- **Reduce costs**

4. Quality Assurance – Suitable Products



p71 ECO Thermal

Economical but powerful

Inexpensive thermal image surveillance with an intelligent camera base and app capability: The first MOBOTIX ECO Thermal Camera for indoor use at best conditions. Designed for intrusion detection and perimeter protection in protected areas.

► [Details](#)

► [Data Sheet](#)



M73 + Thermal Module

Universal Allround Camera

The M73 is designed for indoor and outdoor use and delivers excellent results even in the most demanding environmental conditions. It is universally suitable for all applications and can be equipped with different optical and thermal sensors. Apps for multiple purposes available.

► [Details](#)

► [Data Sheet](#)



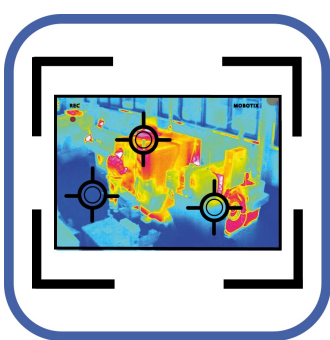
S74 + Thermal Module

Most flexible thermal solution

Multiple sensors. Different viewing directions. Rich range of housings - making the top model of the 7th MOBOTIX camera generation the all-rounder for challenging indoor and outdoor projects and with enough power for demanding apps and AI applications.

► [Details](#)

► [Data Sheet](#)



MOBOTIX Advanced Radiometry App

When you need to go fast

The app for detecting critical heat sources and spontaneous combustion and more with up to 20 individual measurement areas. Can be integrated into fire alarm systems and as a stand-alone solution for individual challenges. Requires Thermal TR Sensor installed.

► [Details](#)

► [Data Sheet](#)



ECO Thermal Sensor

Limited to the Max

As an upgrade for existing perimeter protection and intrusion detection applications in absolute darkness or to meet particularly data protection-compliant requirements - and at a low price. The sensor module fits into standard camera housings of the M73 and S74 as well as the corresponding accessories without an adapter.

► [Details](#)

► [Data Sheet](#)

4.1 Quality Assurance / Intrusion Detection / Perimeter Protection – p71 ECO Thermal

Intelligent Indoor Thermal Camera.

Economical. Powerful. Expandable via Apps.

Small and inconspicuous thermal camera for particularly sensitive areas that attach great importance to data protection and the protection of personal rights. Monitoring of capital goods such as storage batteries or data centres is also possible, as is discreet surveillance of restricted access areas.

- Detect Intruders even in total darkness.
- Helps companies to permanently reduce their total energy costs.
- Supports growing number of apps to extend functionalities and services:
 - **MOBOTIX ActivitySensor**
 - **Irisity IRIS Core AI Analytics – Intrusion**

MOBOTIX Thermal Power at low cost for indoor use.
Available now!

THE MOST IMPORTANT:

- ECO Thermal Sensor (uncooled microbolometer)
- 320 x 240; 9FPS
Upscaling up to 4K UHD
3840 x 2160
- Available with 56° or 105° horizontal angle of view
- Integrated Ambient Temperature Sensor
- Supports Raw Data for apps or 3rd party integration
- Power supply via PoE Plus / PoE via hardware switch
- Ethernet / USB

► [Data Sheet](#)

► [Quick Installation Guide](#)

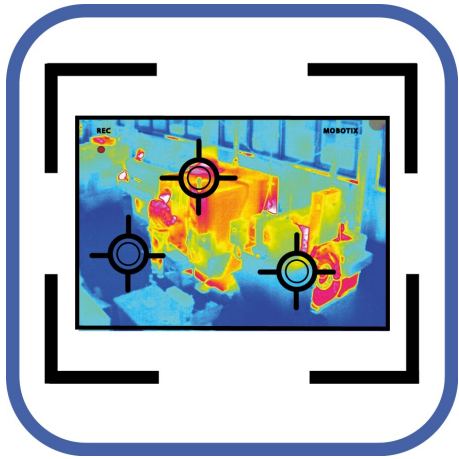
4.1 Quality Assurance – p71 Thermal ECO – Order Information

MOBOTIX p71 ECO Thermal		
Order Number	Description	
p71 Thermal ECO 320 - T040, 56° Mx-p71-320T040	p71 Indoor camera with Thermal ECO module 320-T040. CIF 320x240 • 9fps • 105 x 75°; 5,23mr • NETD: 65mK (typ); < 100mK (max) • build in ambient temperature sensor • IR Range 7,8 to 14µm • 3-axis mechanical pan/tilt head • Operating temperature range: -10 to +50 °C - Built-in speaker and microphone • USB-C • 8GB memory card included	
p71 Thermal ECO 320 - T080, 105° Mx-p71-320T080	p71 Indoor camera with Thermal ECO module 320-T080. CIF 320x240 • 9fps • 56 x 42°; 3mr • NETD: 65mK (typ); < 100mK (max) • IR Range 7,8 to 14µm • 3-axis mechanical pan/tilt head • Operating temperature range: -10 to +50 °C - Built-in speaker and microphone • USB-C • 8GB memory card included	

Due to the required approval procedures for thermal cameras, the delivery time may be delayed.

*MOBOTIX MSRP prices are recommended net sales prices Ex Works (EXW), ex works in Germany. In some countries, MOBOTIX distributors have to apply locally higher sales prices due to import regulations/duties.

4.2 Quality Assurance / MOBOTIX Advanced Radiometry App



The app makes the difference.

Raises the possibilities of thermal radiometry to the MOBOTIX level.

Monitor multiple temperature ranges with high accuracy on a single camera image and define different escalation levels. Connection to existing systems and integration into projects is a breeze with a variety of standard interfaces.

- Definition of up to 20 temperature measurement ranges within the camera's field of view
- Individual calibration of each temperature measurement range (e.g. emissivity)
- Temperature events when defined temperature thresholds are exceeded
- Detection of physical manipulation of the thermal sensor (e.g. covering the sensor)
- **MODBUS/TCP** Interface as Client and Server

Use the full performance spectrum of optical and thermal sensors in just one camera!

THE MOST IMPORTANT:

- Designed for M73, S74
- Thermal Radiometry Sensor (TR) required
- Dual / Multi Sensor usage
- MxMessageSystem
- MOBOTIX events
- ONVIF events
- CNPP 19005 compliant

Integration:

- Mx ManagementCenter 2.7.x
- Mx HUB 2021 R1
- Milestone X-Protect (via XML)
- Generic 3rd party integration through XML, JSON and MODBUS/TCP

► [Details](#)

4.2 Quality Assurance – MOBOTIX Advanced Radiometry App – Order Information

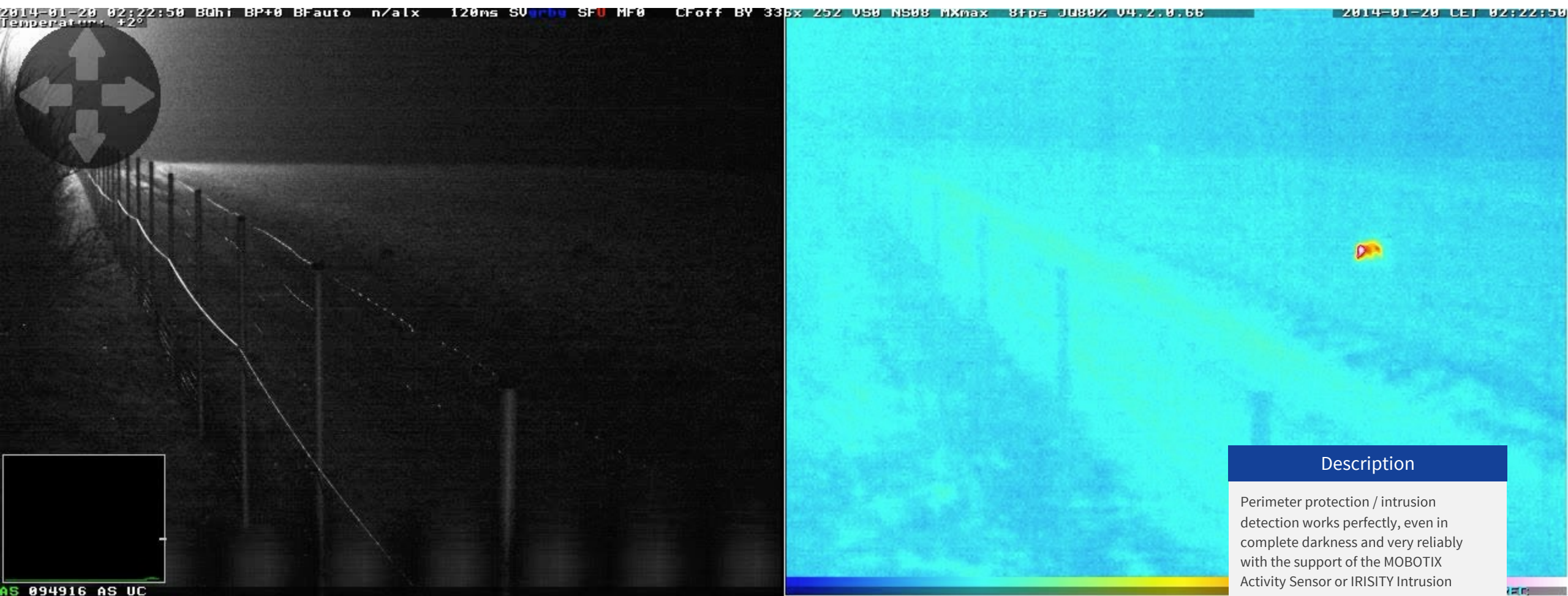
MOBOTIX Advanced Radiometry App		
Order Number	Description	
Mx-APP-MX-ARA	<ul style="list-style-type: none">• Extension of the temperature measurement functions of MOBOTIX Thermal Radiometry cameras (CNPP 19005 compliant)• Definition of up to 20 temperature measurement areas within the field of view of the camera• individual calibration of each temperature measurement area (e.g. emissivity values)• Temperature events when defined temperature thresholds are exceeded• Detection of physical manipulation of the thermal sensor (e.g. sensor covered)• MOBOTIX events via MxMessageSystem• Reporting of temperature data and threshold status of each area via MODBUS/TCP and JSON / XML via HTTP(S)	

*MOBOTIX MSRP prices are recommended net sales prices Ex Works (EXW), ex works in Germany. In some countries, MOBOTIX distributors have to apply locally higher sales prices due to import regulations/duties.

5.

SAFETY
PERIMETER PROTECTION
INTRUSION DETECTION

5. Safety / Perimeter Protection / Intrusion Detection – Examples



Description

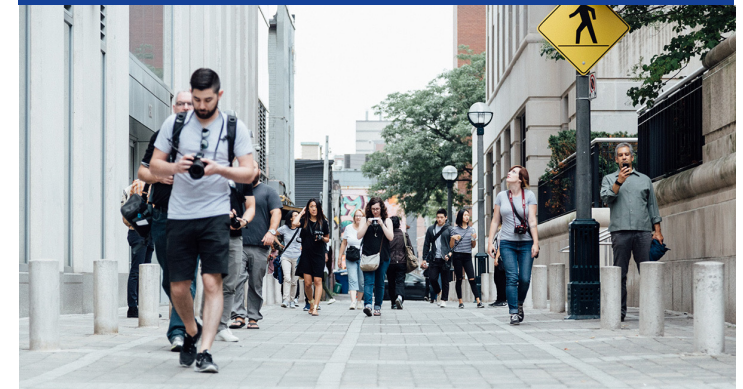
Perimeter protection / intrusion detection works perfectly, even in complete darkness and very reliably with the support of the MOBOTIX Activity Sensor or IRISITY Intrusion Detection App.

5. Safety / Perimeter Protection / Intrusion Detection – Your Advantages with MOBOTIX

Reduce energy cost without compromising on safety.
Discreet and data protection compliant.

FEATURE	ADVANTAGE	BENEFIT
Detect Objects with a non-optical thermal sensor.	Detection of intrusion and border crossing while respecting personal rights and data protection requirements.	Ensure security, protect sensitive areas and at the same time comply with the strictest data protection guidelines - even in public spaces.
Works in complete darkness.	All lights that are needed to secure areas can remain switched off and only be activated if there is a legitimate interest and video recordings are necessary.	Additional deterrence through light shock and relevant cost savings of energy and light pollution.
Additional optical sensor in the same camera for preservation of evidence possible.	Detect and log legitimate interest and start recording with optical sensor only if conditions are met.	Easy proof of legitimate interest and reduced effort in case of dispute.
Upgrade of existing MOBOTIX cameras possible.	Thermal sensors can be retrofitted to many existing installations of the 6th and 7th generation.	Minimum investment and quick ROI due to saved energy costs.
Support by a growing number of camera apps.	Maximising the performance and accuracy of thermal sensor systems.	Use the possibilities of e.g. ActivitySensor and many other apps also for the thermal sensor.

PERIMETER / INTRUSION



Key benefits:

- GDPR compliant monitoring of public areas
- **Works even in complete darkness**
- Detect legitimate interest
- Video Recording with additional optical Sensor
- Can significantly **reduce overall energy costs.**
- **Upgrade for MOBOTIX Cameras available**

5. Safety / Thermal Perimeter Protection / Intrusion Detection – Products



p71 ECO Thermal

Economical but powerful

Inexpensive thermal image surveillance with an intelligent camera base and app capability: The first MOBOTIX ECO Thermal Camera for indoor use at best conditions.

Designed for intrusion detection and perimeter protection in protected areas.

Attention: No exact temperature determination possible!

► [Details](#)

► [Data Sheet](#)



ECO Thermal Sensor

Limited to the Max

As an upgrade for existing perimeter protection and intrusion detection applications in absolute darkness or to meet particularly data protection-compliant requirements - and at a low price.

The sensor module fits in standard camera housings without an adapter.

► [Details](#)



MOBOTIX M73 Thermal

Allround camera for indoor and outdoor use.

Example: Combine a thermal sensor with an optical sensor and only record when you have demonstrated a legitimate interest with the thermal sensor. Or combine thermal image and real image with a "thermal overlay" to detect anomalies.

► [Details](#)

► [Data Sheet](#)



MOBOTIX S74 Thermal

Integratable and modular.

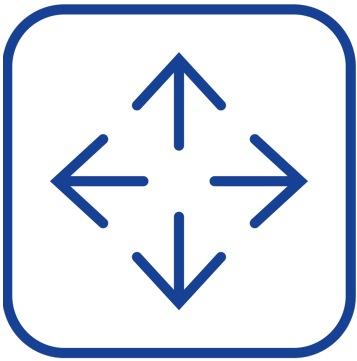
Use the full range of sensors, apps and accessories to tailor this modular camera system to the needs of the project.

Example: With a "dual mount" and the S74, you can even create thermal panorama images and survey extreme areas with just a single camera.

► [Details](#)

► [Data Sheet](#)

5. Safety / Thermal Perimeter Protection / Intrusion Detection – Products

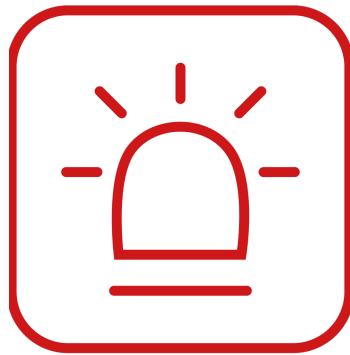


MOBOTIX Activity Sensor App

Reliable Motion and Intrusion Detection

The powerful motion detection app now also works with Thermal and ECO Thermal sensors. This means that perimeter protection and intrusion detection can now also be operated with a thermal camera, completely independent of light and ambient conditions.

► [Details](#)



IRISITY Intrusion Detection App

Usable with Thermal Cameras!

Detects reliably the crossing of virtual lines and can be very individually adapted to the conditions on site and the requirements of the area of use through coordinated configuration. The number of configurable areas and virtual lines is not limited.

► [Details](#)

5.2 Safety / Perimeter Protection – MOBOTIX 7 Thermal ECO Sensor Modules for S74 and M73

ECOnomical: Cost-effective and compact thermal sensor modules for M73 and S74

Two new MOBOTIX Thermal ECO modules with CIF resolution (320x240) in combination with the S74 and M73 provide a cost-effective basic thermal solution – especially where no exact temperature measurement is required: for example, for perimeter protection even in complete darkness and without violating privacy (combination of thermal sensor image with ActivitySensor; compliant with data protection regulations, as no identification of persons in the thermal image is possible).

This application range is supported by the large viewing angles of 56° x 42° and 105° x 75° for a CIF module. The Thermal ECO modules use the same housings as the optical MOBOTIX 7 sensor modules and therefore fit into the M73 at any position as well as into all available S74 mounts. With a thermal sensitivity of around 60 mK and a detectable temperature range of -40 to 330 degrees Celsius, the MOBOTIX Thermal ECO solution offers excellent value for money.

Thermal ECO: Mounting and module brackets for the S74

The MOBOTIX S74 itself usually operates discreetly behind a wall, device or ceiling panel. Only the lenses and their mounts are mounted visibly. This way, two separate areas (2 rooms or looking around the corner) can be captured simultaneously with only one camera. Likewise, opposite viewing directions and different lanes can be monitored with one camera.

The following mounts are available for the sensor modules and thus also for the new Thermal ECO modules:

- **MonoMount** (fig. left) for one sensor
- **DualMount** (fig. 2nd from left) for two sensors
- **PTMount** (manual pan-tilt mount, 2nd from right)
- **HaloMount** (far right) for discreet ceiling and wall mounting



5.2 Safety / Perimeter Protection – MOBOTIX 7 Thermal ECO Sensor Modules for S74 and M73



Both Thermal ECO sensor modules in comparison (identical scene and camera position):

On the left the variant with a horizontal 105° opening angle, on the right with a 56° horizontal opening angle. The thermal module was positioned at a height of 3 m above the ground and at a distance of about 5 metres from the middle person in the left image. The selected image display color "Amber" is very well suited for the application area "intrusion detection/perimeter protection", since here it is not the surface temperatures of the objects in the room, which can also be displayed in different colors, that are important, but rather the moving objects/persons, which can be very well identified in any lighting situation due to their heat signature. Motion detection is then performed using the MOBOTIX ActivitySensor or the new Irisity App Core AI Analytics (see further down in this document).

5.2 MOBOTIX 7 Thermal ECO Sensor Modules for S74 and M73 – Ordering Information

New MOBOTIX Thermal ECO Modules for S74 and M73: Ordering Information		
Model name Order number	Description	
Thermal module ECO 320 – T040 Mx-O-M7SA-320T040	MOBOTIX 7 Thermal Module ECO 320 – T040 for M73/S74, 320*240, 105° x 75° opening angle (horizontal x vertical)	
Thermal module ECO 320 – T080 Mx-O-M7SA-320T080	MOBOTIX 7 Thermal Module ECO 320 – T040 for M73/S74, 320*240, 56° x 42° opening angle (horizontal x vertical)	



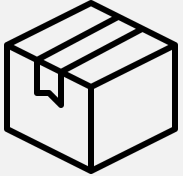
*MOBOTIX MSRP prices are recommended net sales prices Ex Works (EXW), ex works in Germany. In some countries, MOBOTIX distributors have to apply locally higher sales prices due to import regulations/duties.

6.

IMPORTANT LINKS AND DOWNLOADS

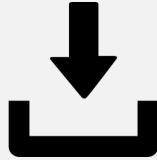
6. Important Links and Downloads

Products



[Overview of the entire MOBOTIX product range...](#)

Software



[Download software, firmware, apps and driver packages...](#)

Documentation



[Technical documentation, white papers, technical drawings and more...](#)

Trainings



[Current dates about webinars, trainings and events...](#)

Partner Toolbox



[Sales support such as brochures, presentations, videos, etc. can be found in our Toolbox, exclusively for MOBOTIX partners.](#)



[Open Link to Apple AppStore](#)



[Open Link to Google PlayStore](#)

[Website for PC / MAC](#)



[We live from the constant improvement. Therefore, please share your thoughts with us...](#)

BeyondHumanVision

MOBOTIX

MOBOTIX AG
Kaiserstrasse
67722 Langmeil
Germany

+49 6302 9816-0
info@mobotix.com
www.mobotix.com

MOBOTIX, the MOBOTIX Logo, MxControlCenter, MxEasy, MxPEG, MxDisplay and MxActivitySensor are trademarks of MOBOTIX AG registered in the European Union, the U.S.A. and in other countries • Subject to change without notice • MOBOTIX do not assume any liability for technical or editorial errors or omissions contained herein • All rights reserved • © MOBOTIX AG