

Rekor Edge Max

MOUNTABLE LICENSE PLATE & VEHICLE RECOGNITION

Rekor Edge Max is a complete vehicle recognition solution. Engineered for high-speed primary roadways and highways, Edge Max seamlessly captures and processes vehicle data on-device and from advanced distances. The system features a durable enclosure, onboard modem, easy mounting, optional solar power, and can even be configured with two cameras to increase capture range.



FEATURES AND FUNCTIONS



OPERATION READY

- 3-4 lanes, 300 ft max range*
- 120 mph max capture speed
- Easily mount to a pole or surface for quick installation
- Complete vehicle recognition & processing solution



STATE-OF-THE-ART RECOGNITION

- Advanced vehicle recognition with plate, make, type, color, and direction of travel
- Accurate in day/night and all-weather conditions
- Read paper, temporary, and vanity plates
- Real-time alerting



POWERFUL PERFORMANCE

- 1920 x 1080 HD Camera
- Outdoor rated, IP66, NEMA4
- 4G LTE, Ethernet ready
- Rekor Scout™ ready**
- Scout dashboard available in the cloud or on-premise
- Optional solar power and/or pole

*Dual camera solution available for increased lane coverage.

**Rekor Scout™ is a proprietary software platform for accessing and analyzing Edge captured vehicle data.

REKOR EDGE SPECIFICATIONS

Recommended usage

Use cases: Highways, Primary Roads

Coverage*

Lane coverage: 3-4 lanes (5-6 lanes with dual cameras)

Distance: 300 ft max

Speed: 120 mph max

Camera specifications

Camera resolution: 1920 x 1080 HDTV 1080p

Image compression: JPEG

Video streaming: H.264

Network security: Password, IP address filtering

IR illumination: Optimized IR w/power efficient, long-life 850 nm IR LED's

Rekor Scout™ features: Search (e.g. partial plates, no plates, vehicle characteristics), hotlists, alerts, reports, data security/sharing, and much more

Communications

Communications: Ethernet, Cellular Modem

Cellular modem: 3G, 4G LTE MIMO

Cellular service: Not included

GPS: Included

Security: SSL over websockets & HTTPs

Mount & power

Mounting style: Surface or Pole

Input voltage range: 9 VDC - 48 VDC

Power consumption: Average: 18W, Max: 22W

Available accessories (additional charges apply)

Mounting pole: 19.6 ft | above ground: 14 ft, depth: 5-6 ft

Solar power: 39x66x1.3 in array

Environmental specifications

Enclosure: Diecast aluminum, IP66

Operational temperature: -22°F to 131°F

Storage temperature: -40°F to 149°F

Warranty: Full repair/replace available

*Maximum coverage values. Actual performance may vary.



 **REKOR**
INTELLIGENCE DRIVEN INNOVATION

Ready to get started?
[Contact admin@atek.net.au](mailto:admin@atek.net.au)


ATEK
INTEGRITY + INNOVATION

Rekor Edge Pro

MOUNTABLE LICENSE PLATE & VEHICLE RECOGNITION



Rekor Edge Pro is a complete vehicle recognition solution. Engineered for roadway speeds, the system can be deployed in neighborhoods, campuses, business districts, and also be used for parking and access control. It captures and processes data on-device within a durable enclosure. Simple install and optional solar power allows Rekor Edge Pro to meet countless needs.

FEATURES AND FUNCTIONS



OPERATION READY

- 1-2 lanes, 75 ft max range
- 70 mph max capture speed
- 1920 x 1080 HD Camera
- On-device video processing
- Easily mount to a pole or surface for quick installation



STATE-OF-THE-ART RECOGNITION

- Advanced vehicle recognition with plate, make, type, color, and direction of travel
- Accurate in day/night and all-weather conditions
- Read paper, temporary, and vanity plates
- Real-time alerting



POWERFUL PERFORMANCE

- Outdoor rated, IP67, NEMA4
- 4G LTE, Ethernet ready
- Rekor Scout™ ready**
- Scout dashboard available in the cloud or on-premise
- Optional solar power and/or pole

*Solutions available for extreme ranges and lane coverage.

**Rekor Scout™ is a proprietary software platform for accessing and analyzing Edge captured vehicle data.

REKOR EDGE PRO SPECIFICATIONS

Recommended usage

Typical locations: Business districts, local roads, campuses, residential streets, drive-thrus, parking lots

Coverage*

Lane coverage: 1-2 lanes
Distance: 75 ft max
Speed: 70 mph max

Camera specifications

Camera resolution: 1920 x 1080 HDTV 1080p
Image compression: JPEG
Video streaming: H.265
Network security: Password
IR illumination: Optimized IR with 850 nm IR LED's

Communications

Communications: Ethernet
Cellular service: Optional, 4G LTE MIMO
GPS: Optional
Security: SSL over websockets & HTTPs

Mount and power

Mounting style: Surface or Pole
Input voltage range: 12 VDC - 48 VDC
Power consumption: Average: 7W, Max: 26W

Available accessories (additional charges apply)

Mounting pole: 19.6 ft | above ground: 14 ft, depth: 5-6 ft
Solar power: 120 Watt Panel - 26.5" x 40"

Environmental specifications

Enclosure: Diecast aluminum, IP67
Operational temperature: IR on: -20°C to 50°C
IR off: -20°C to 60°C
Storage temperature: -30°C to 60°C
Warranty: 2-year repair/replace

*Coverage up to. Actual performance may vary.



HBF 7ZD4
TENNESSEE

Location: Main Entrance
Vehicle: Beige Toyota Sedan
Direction: Entering
Confidence: 98.9
Time: 17:30



Ready to get started?
Contact admin@atek.net.au



ATEK
INTEGRITY + INNOVATION

Rekor Finder

MOBILE LICENSE PLATE & VEHICLE RECOGNITION

Rekor Finder is an all-in-one mobile solution that accurately identifies license plates and vehicles in real-time, at high rates of speed, and extreme viewing angles. The system comes complete with two high FOV cameras and a processing unit installed discreetly in-vehicle. The unique interior camera mount makes Finder perfect for undercover operations or for use in any patrol vehicle.



FEATURES AND FUNCTIONS



EXTREME COVERAGE

- Wide viewing angle covers 2-3 lanes on each side
- Closing speed of up to 140 mph
- Enhanced vehicle recognition includes plate number, state, make, model, color, and more
- Accurately reads paper, vanity plates, and stacked characters



OPERATION READY

- Low-profile interior mount
- Two 1920x1080p HD cameras
- Portable design with easy set-up in any vehicle
- Nighttime operation with ambient lighting
- MDT connectivity provides review and search capabilities



POWERFUL PERFORMANCE

- Powerful ALPR processing (1 camera @ 720p/30fps, 2 cameras @ 720p/15fps)*
- 50 ft capture distance @ 1MP resolution
- 8GB DDR4 RAM, 16GB Internal Flash Memory
- 4G LTE and Wi-Fi connectivity

*Higher video resolutions will be scaled down to 1280x720p for ALPR process. All video recordings and still images will be in original resolution.

REKOR FINDER SPECIFICATIONS

State-of-the-Art ALPR

- Vehicle color, make, model, location, and more
- Identifies issuing state or province for entirety of US, Canada, and Mexico
- Read paper, temporary, and vanity plates
- Police driven retention gives complete data control to the agency
- Real-time alerts sent the moment a vehicle of interest is detected
- Customizable alerts sent via email, SMS, or directly within app
- Programmable hotlists (NCIC, AMBER alerts, Silver alerts, neighboring agencies, and more)

Rekor Finder Stats

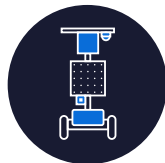
Video compression format:	MPEG-4, H.264
GPU:	NVIDIA Jetson Xavier NX's Onboard 384-core NVIDIA Volta™ GPU with 48 Tensor Cores
Memory:	8GB DDR4 RAM 16GB Internal Flash Memory (expandable to 2TB SSD)
Input voltage range:	10 - 15 V DC
Power consumption:	20W
Network connectivity:	4G LTE, GPS
Camera mount:	Suction to window
Control module enclosure:	Impact resistant Anodized aluminum
Weight:	3.4 pounds
Control module size (LxWxH):	6¼ x 4¾ x 2¾ inches (160 x 122.5 x 69 mm)

Need additional solutions?

Contact us to learn more about our other ALPR solutions.



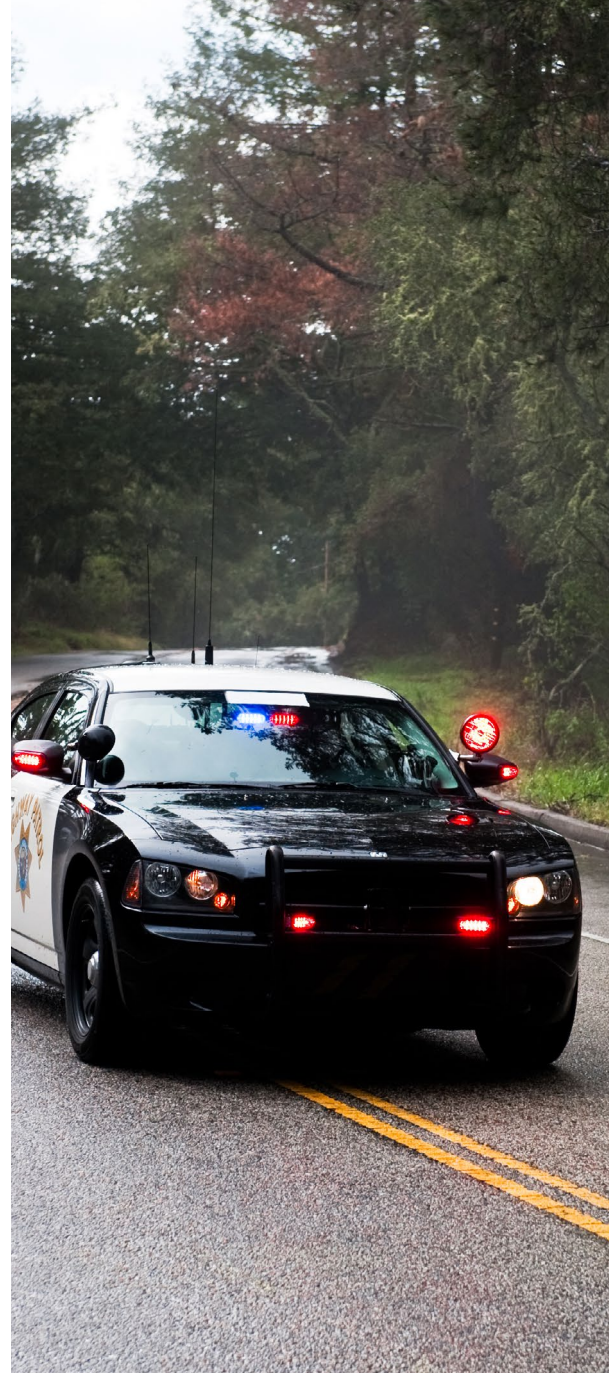
**REKOR
EDGE**



**REKOR
TRAILER**



**REKOR
BLUE**



Ready to get started?
[Contact admin@atek.net.au](mailto:admin@atek.net.au)



Rekor Scout™

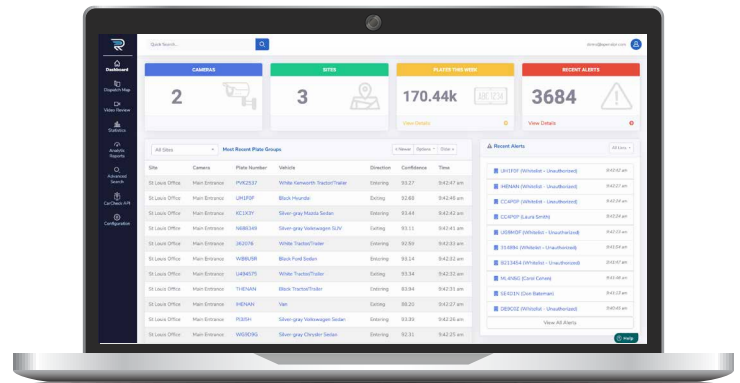
VEHICLE RECOGNITION PLATFORM

Scout enables accurate license plate and vehicle recognition on nearly any IP, traffic, or security camera. Detection results from all connected cameras are displayed in a full-featured, searchable web app which can be accessed from any browser on any operating system.

“Rekor has become the new standard in LPR technology for Westchester, NY.”



- Lt. Brian Hess
Westchester County, New York PD



Leading Features

- Retrieve plate number with vehicle characteristics (make, model, color, and more)
- Unlimited users for dashboard
- Customizable alerts sent via email, SMS, or directly in app
- Flexible data retention and sharing
- Programmable hotlists (NCIC, AMBER Alerts, Silver Alerts, shared lists, and more)
- Search for vehicles based on partial plates or vehicle characteristics
- Free access to Rekor Public Safety Network

STATE-OF-THE-ART ALPR

- Extreme AI accuracy based on years of machine learning
- Provides vehicle make, model, color, direction of travel, and more
- Identifies issuing state or province for entirety of US, Canada, and Mexico
- Recognizes vehicles and license plates in over 70 countries

ADVANCED INSIGHTS

- Pinpoint high-risk locations with city-wide security and analytics
- Identify unauthorized and vehicles of interest
- Monitor entry and exit location activity
- Image verification to confirm license plate and vehicle results
- Searchable database and historical graphs

SECURE INFORMATION

- Secure data sharing and access control options via API, Rekor Public Safety Network (RPSN) and federated search
- Policy driven retention profiles gives complete control to the agency
- Multiple user accounts with different access roles
- Available both on-premises and in the cloud
- Access historical vehicle data to accelerate investigations

MAXIMIZE EFFICIENCY

- Real-time alerts sent the moment a vehicle of interest is detected
- Customizable alerts (hotlists, NCIC, AMBER alerts, Silver alerts, and more)
- Search historic data to find matching vehicles
- Force multiplier to enhance efficiency and reduce frequency of in-person patrols
- Review high-quality video clip of vehicle detection

COST EFFECTIVE

- Reuse existing IP, traffic, and security cameras for LPR
- Significantly more accurate and affordable than legacy OCR solutions
- Process multiple camera feeds at once for virtual geofence around your city
- Distribute processing across multiple servers for large-scale deployments

Used by All, Trusted by Law Enforcement



Mt. Juliet, TN
Police Department



Lancaster, PA
Police Department



Westminster, CO
Police Department



Westchester County, NY
Police Department



Lauderhill, FL
Police Department



Hartford, CT
Police Department



Contact Us: admin@atek.net.au



ATEK

INTEGRITY + INNOVATION