



# Exploration Opportunities Offshore South Africa

## Deep Water West Coast

Jonathan Salomo  
Petroleum Agency SA  
APPEX 2018

# OUTLINE

- Offshore oil and gas exploration and production activity
- Onshore activity in South Africa
- Offshore data coverage
- Orange Basin deep water prospectivity
- Conclusions



# OFFSHORE OIL AND GAS EXPLORATION AND PRODUCTION ACTIVITY



# OFFSHORE RIGHTS AND PERMITS

## 6 Production Rights PR

## 21 Exploration Rights ER

## 7 Technical Cooperation Permits TCP

Several applications in process





# ONSHORE OIL AND GAS EXPLORATION AND PRODUCTION ACTIVITY



# ONSHORE RIGHTS AND PERMITS

1 Production Right

PR

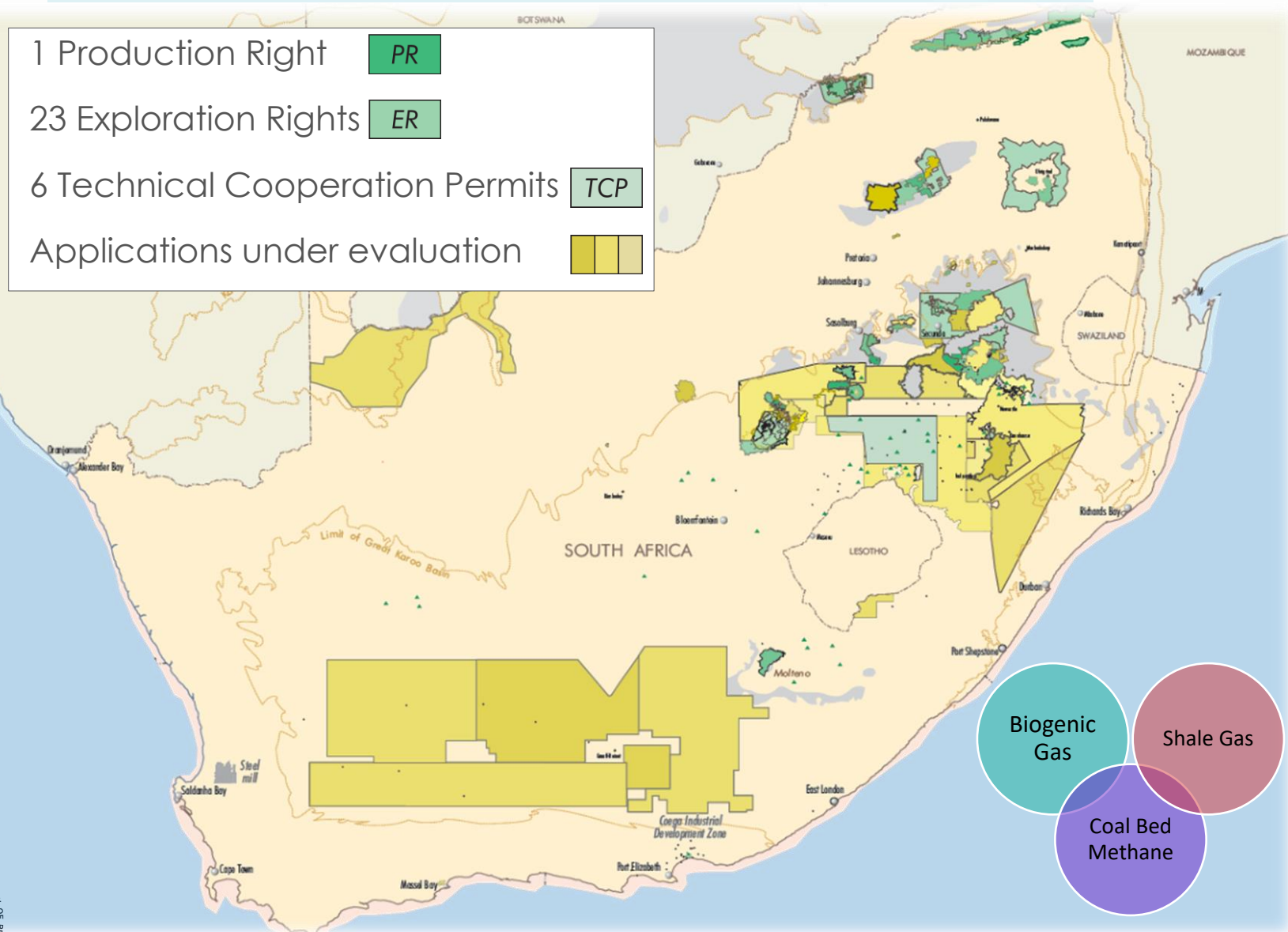
23 Exploration Rights

ER

6 Technical Cooperation Permits

TCP

Applications under evaluation



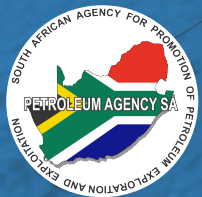
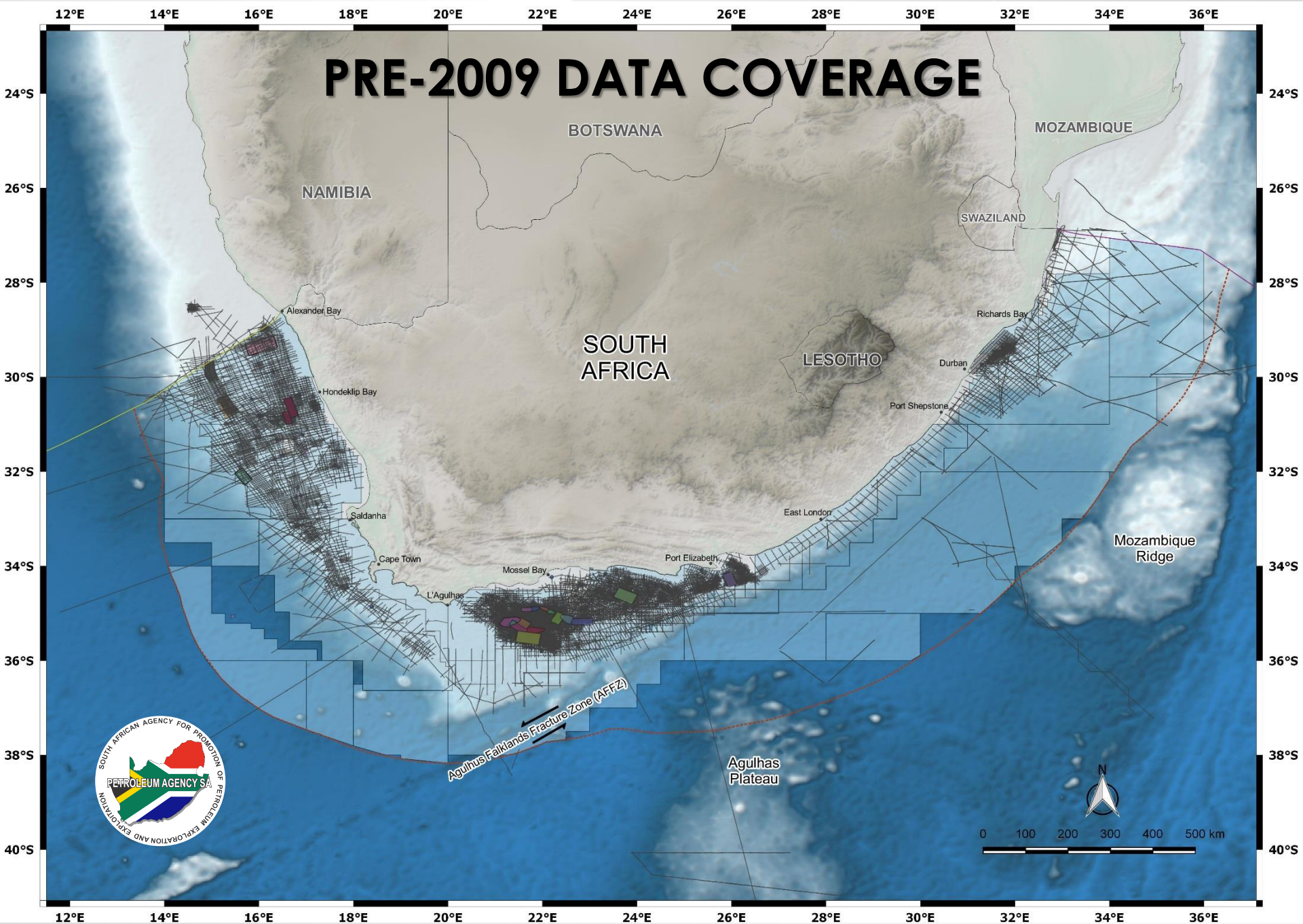
Biogenic Gas

Shale Gas

Coal Bed Methane

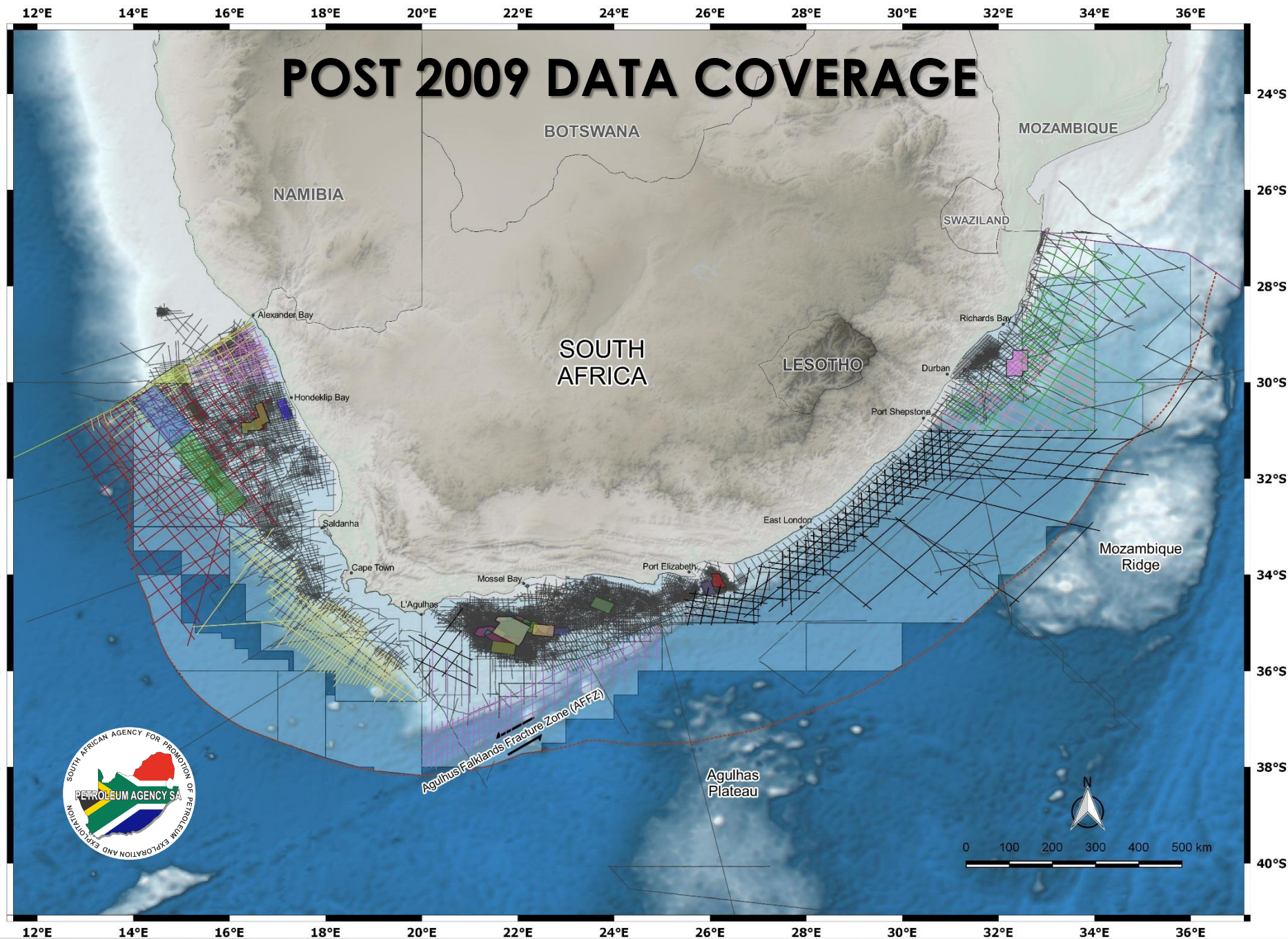
# OFFSHORE DATA COVERAGE







# POST 2009 DATA COVERAGE

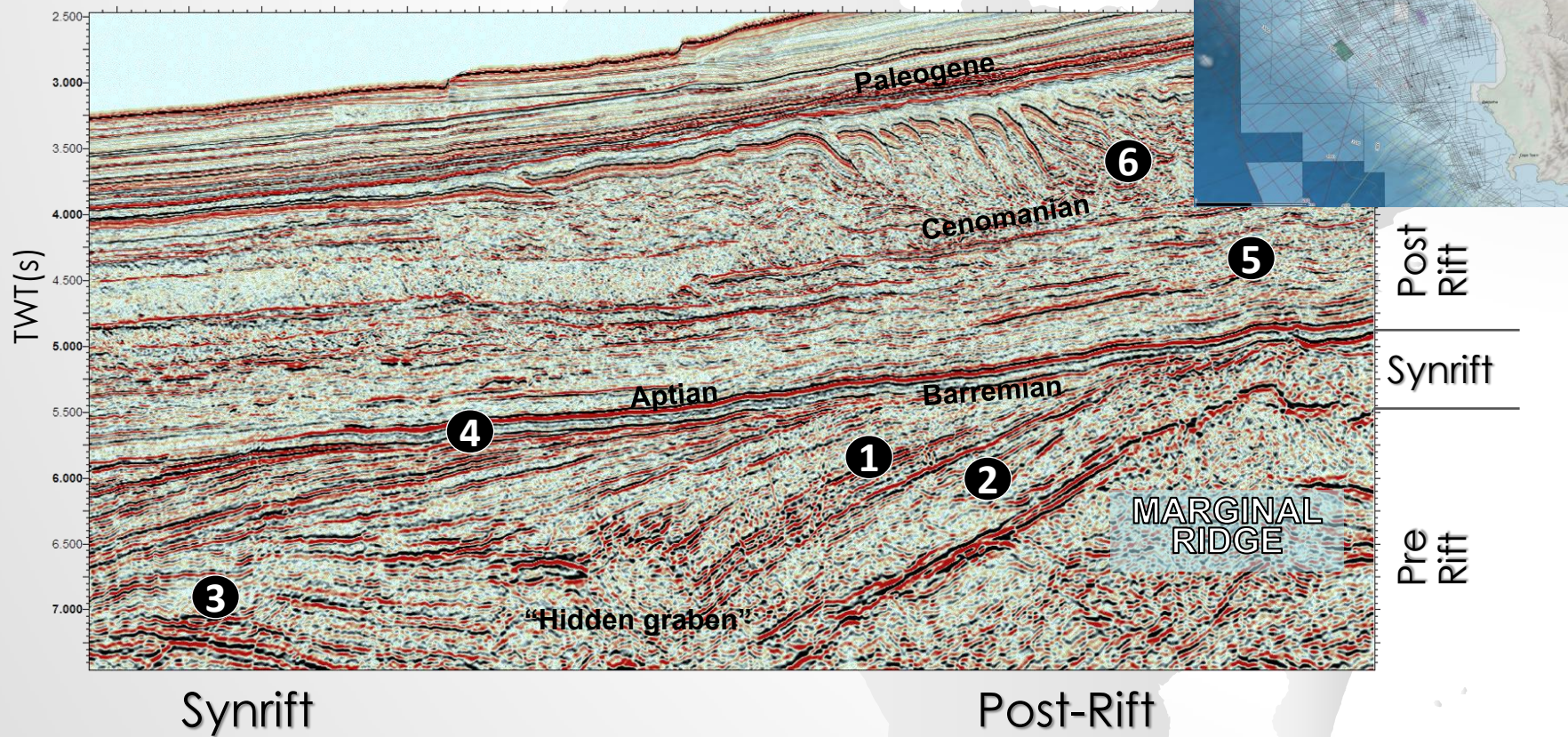




# ORANGE BASIN DEEP WATER PROSPECTIVITY



# NORTHERN AREA DEEP WATER AREA Play concepts

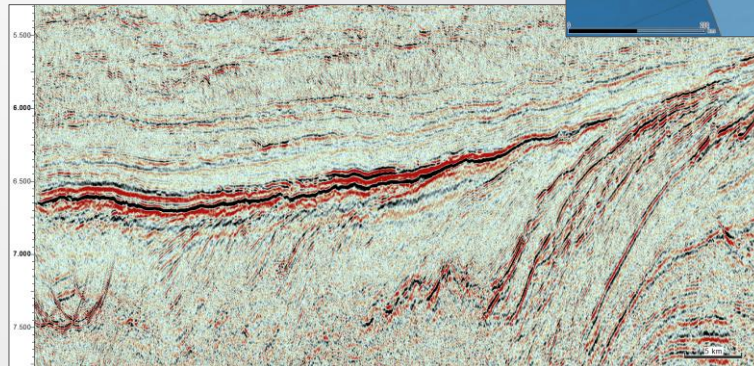
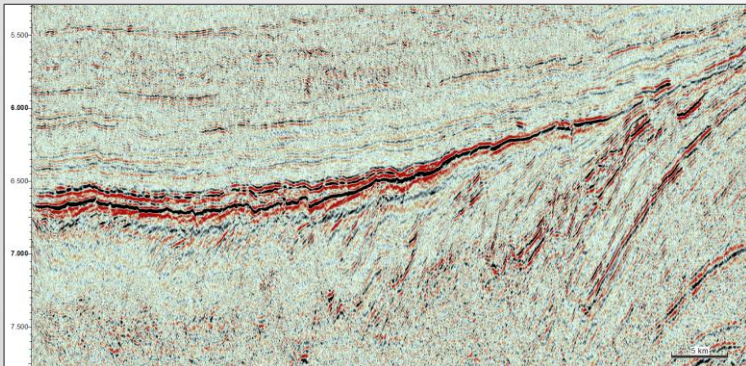
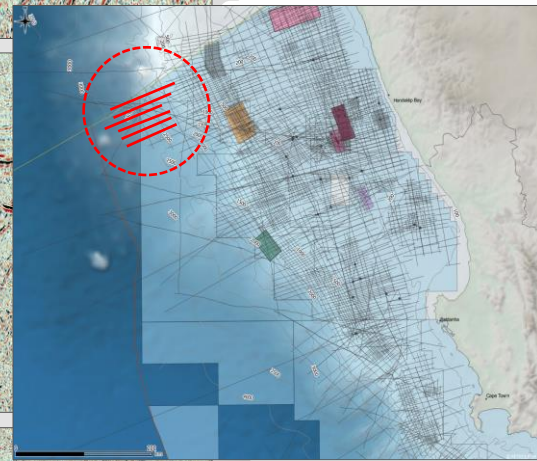
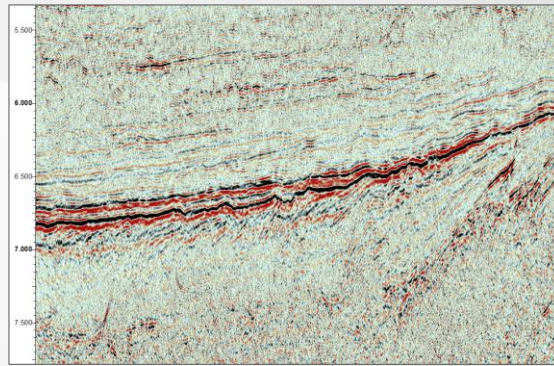
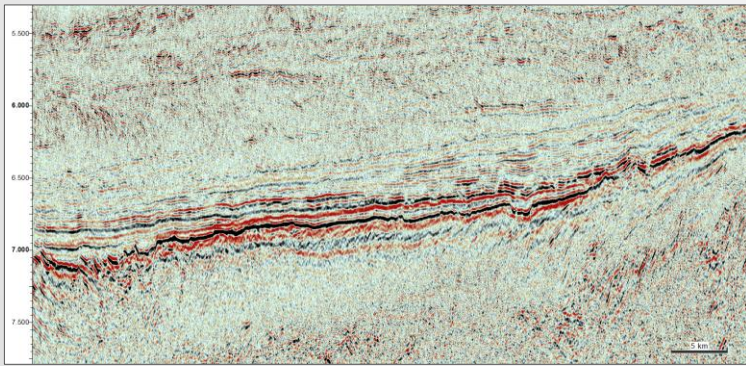
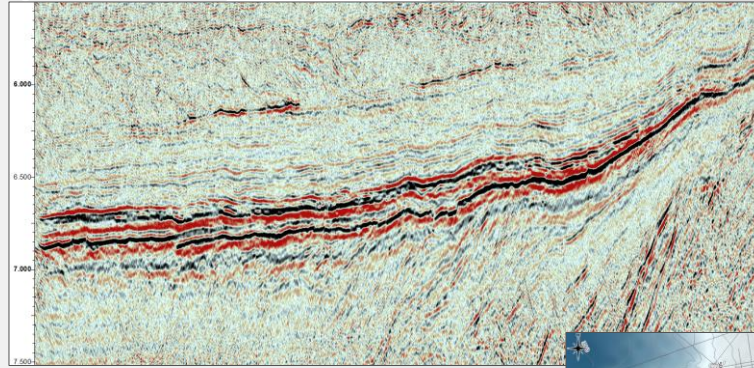
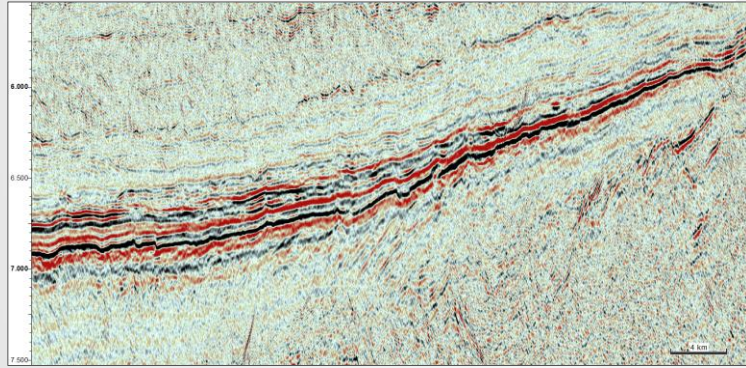


- ① Truncation traps on Barremian TST (kudu-Like)
- ② Onlap/pinchout traps against basement high
- ③ Anticlinal traps (synrift drape?)

- ④ Aptian/Albian onlap/pinchout bff/lower slope complex
- ⑤ "Turonian" lower slope channel complexes (below decollement)
- ⑥ Gravitational fold/thrust imbricates

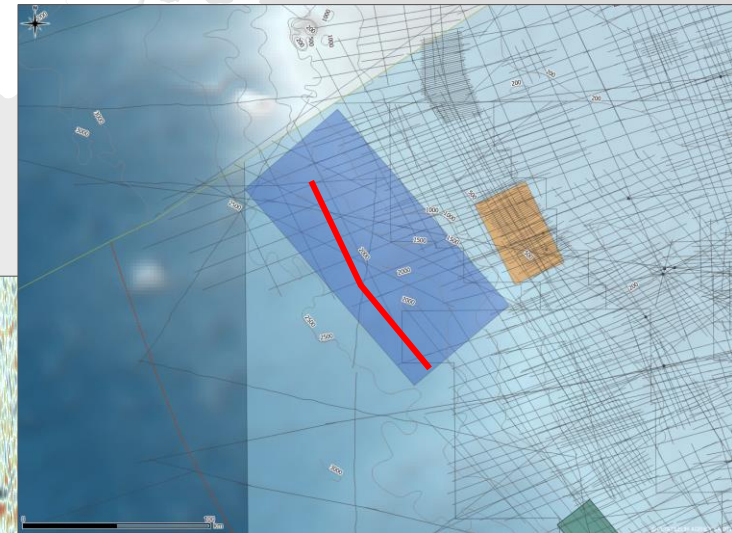
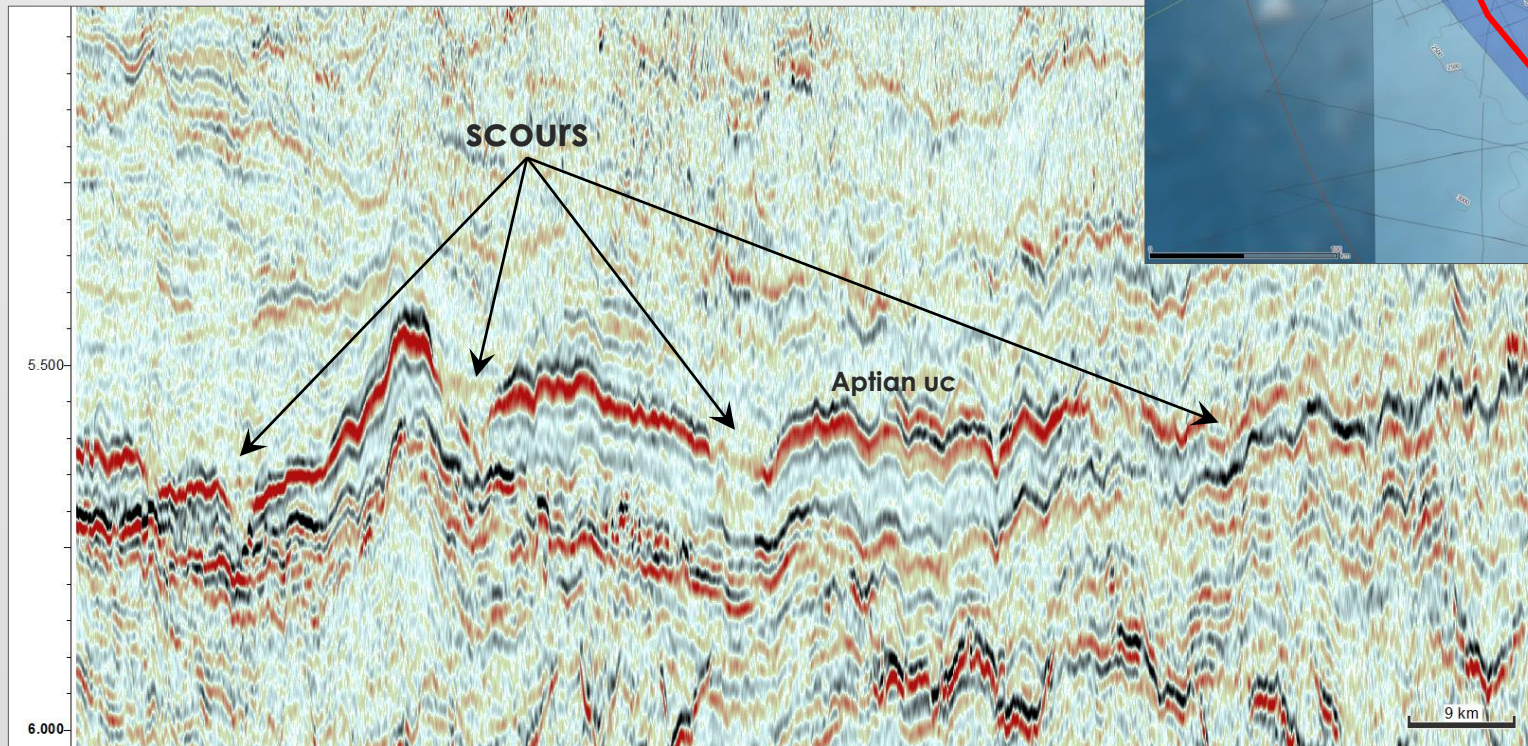


# Basin Floor fan on 2D dip lines





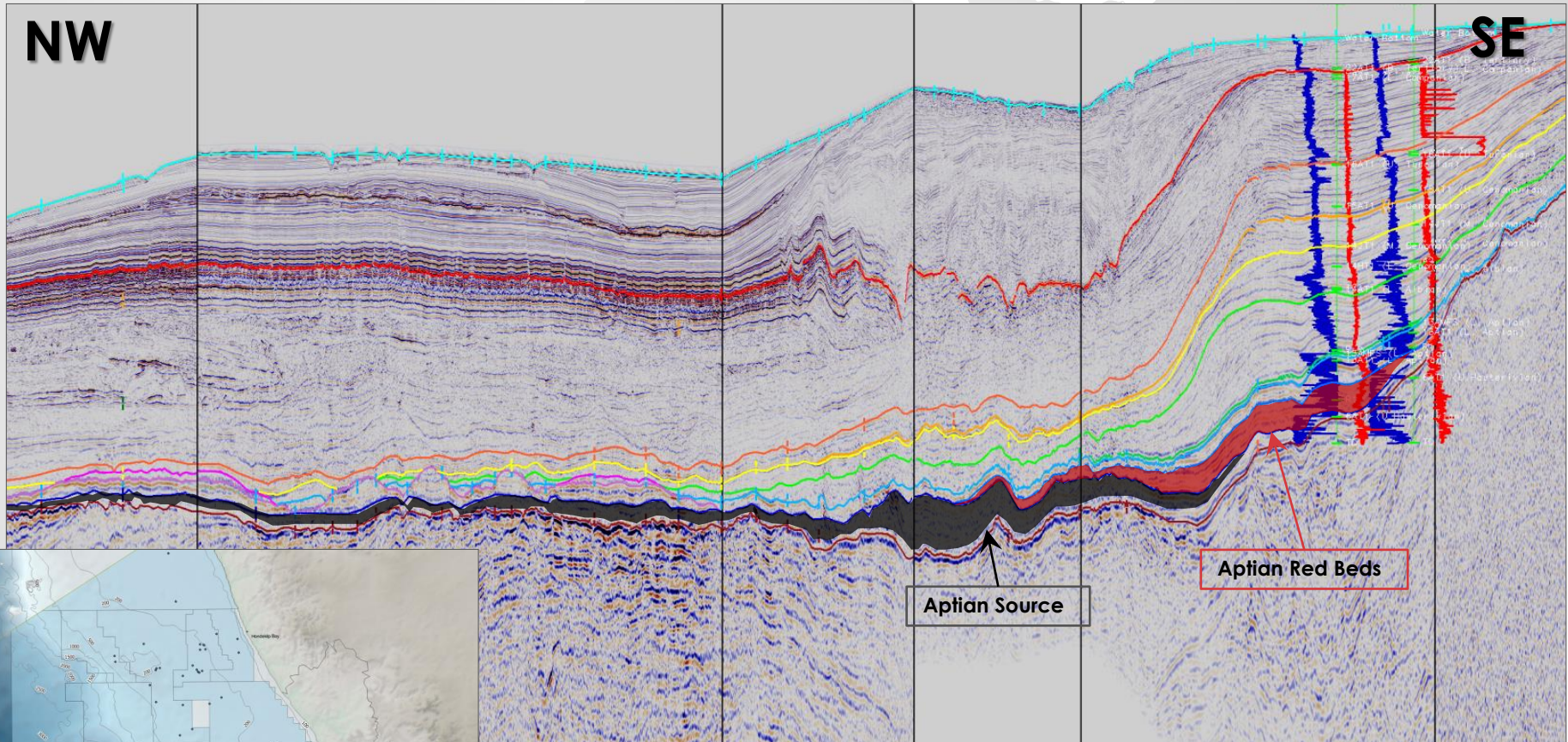
# Scours in Aptian UC: Feeders for BFF's





# CENTRAL DEEP WATER AREA

## Play concepts

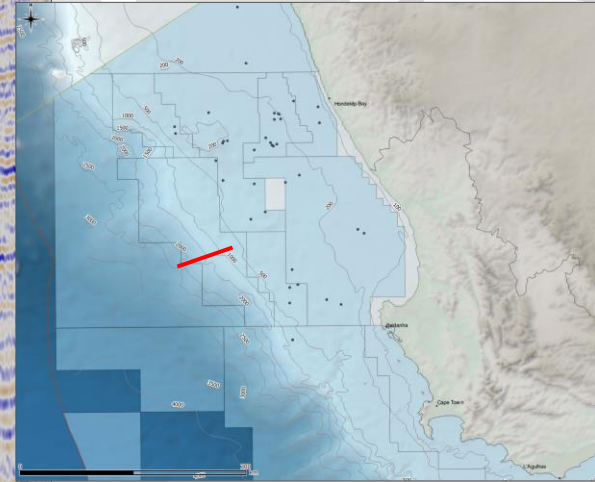
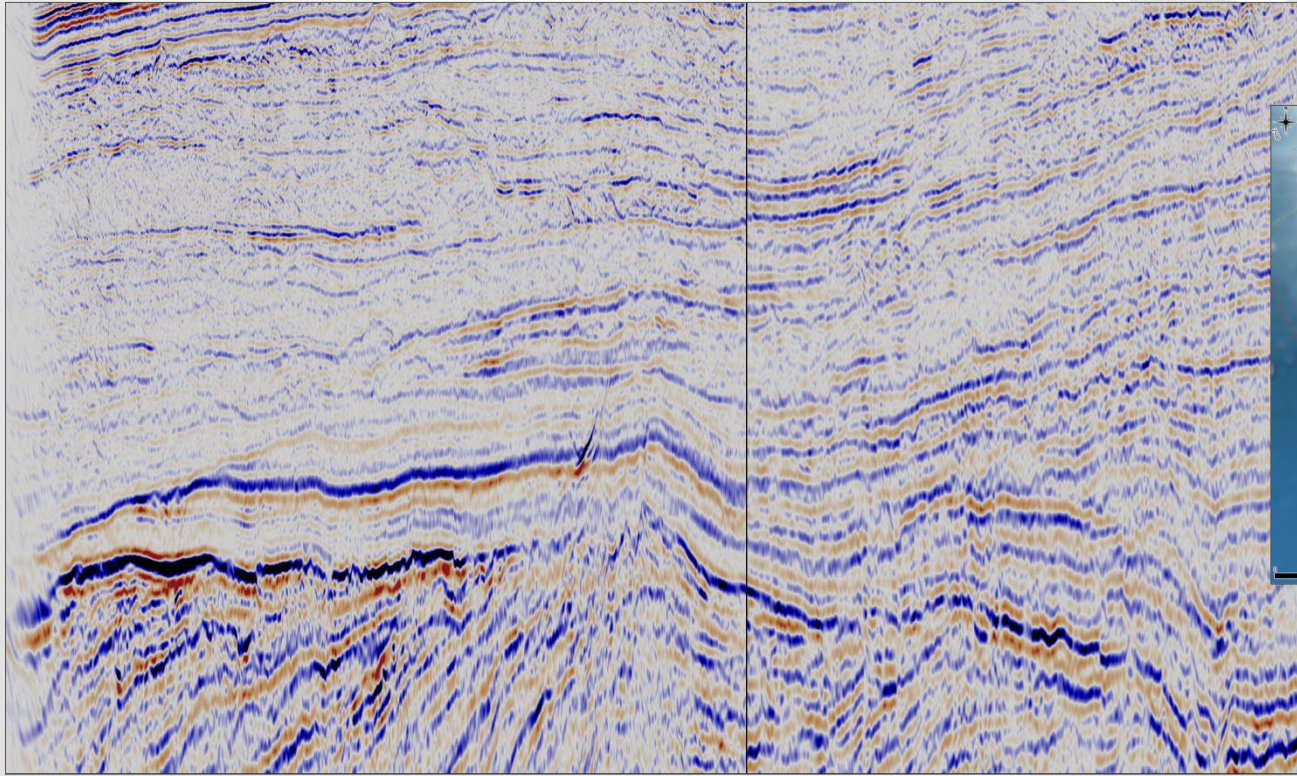


Stable Shelf grading to Base of Slope  
Setting





# Base of Slope Sands over Basement High



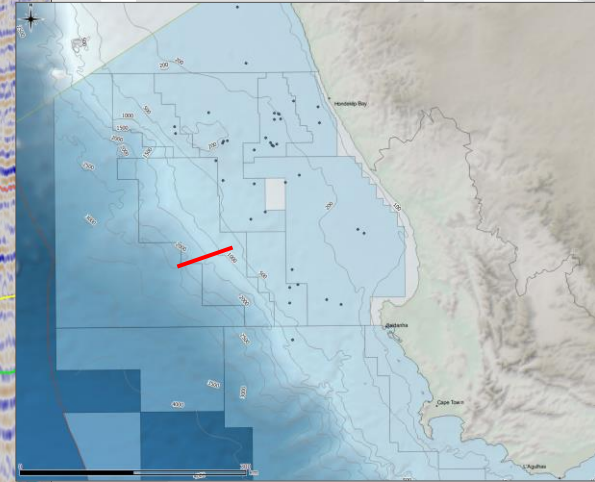
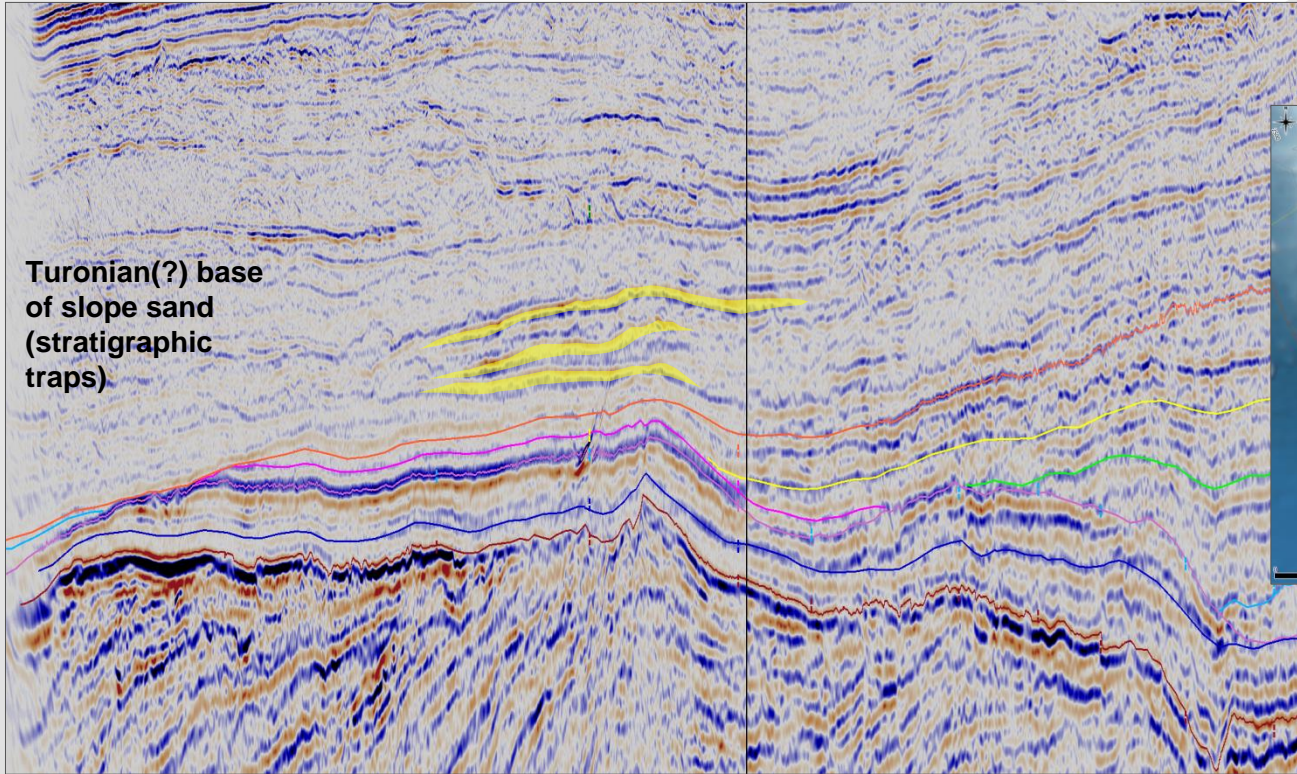
blue : positive  
reflection coefficient



brown : negative  
reflection coefficient



# Base of Slope Sands over Basement High



blue : positive reflection coefficient  
brown : negative reflection coefficient



# Numerous structural leads situated along Outer Ridge.

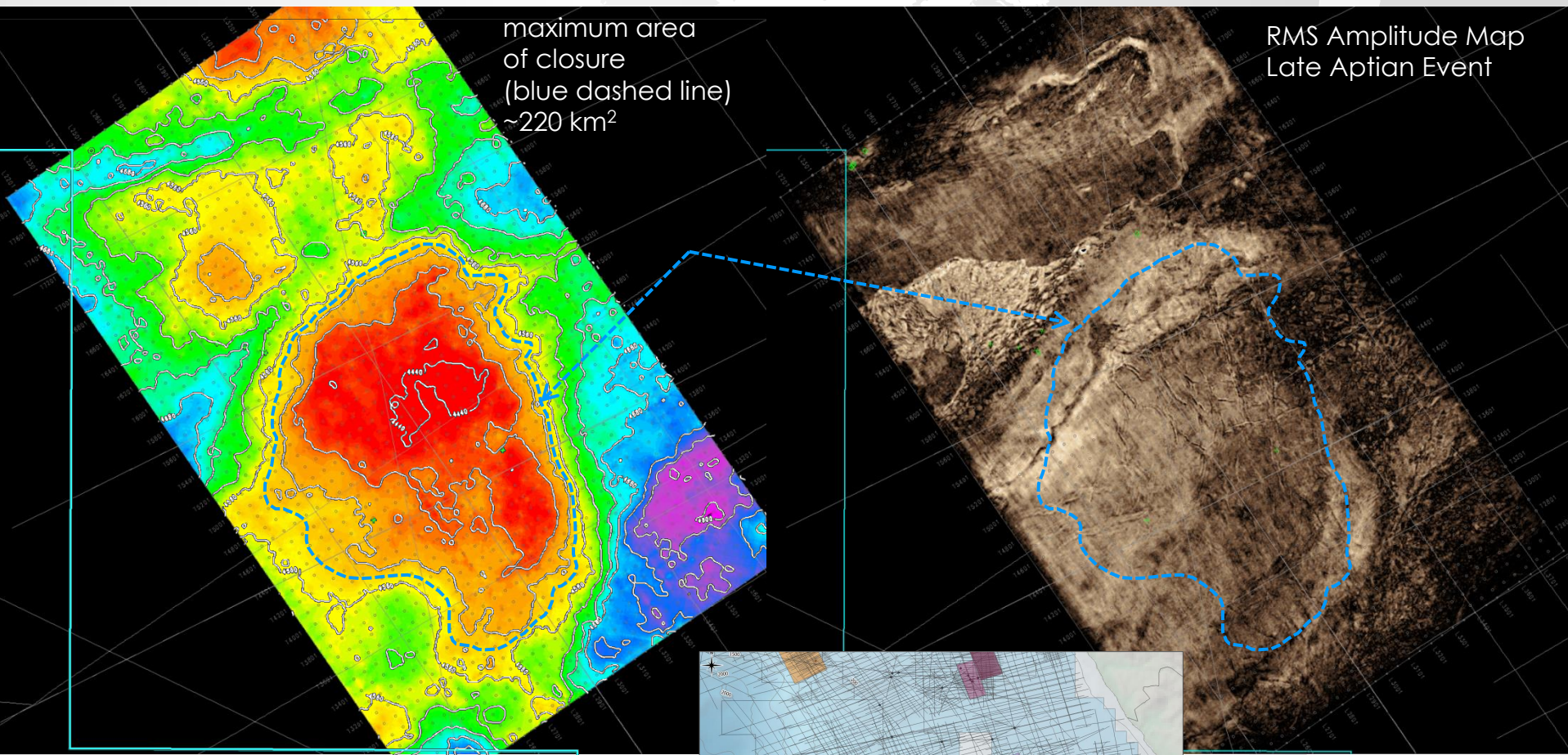
Trend of Aptian mounds  
~220km long

Aptian structural lead  
within 3D seismic volume

- Numerous structural and stratigraphic leads situated along Outer Ridge.
- Expected source interval is anoxic Aptian shale deposited in lows on either side of Outer Ridge
- Ridge provides a focal mechanism for hydrocarbon migration from adjacent synclines.



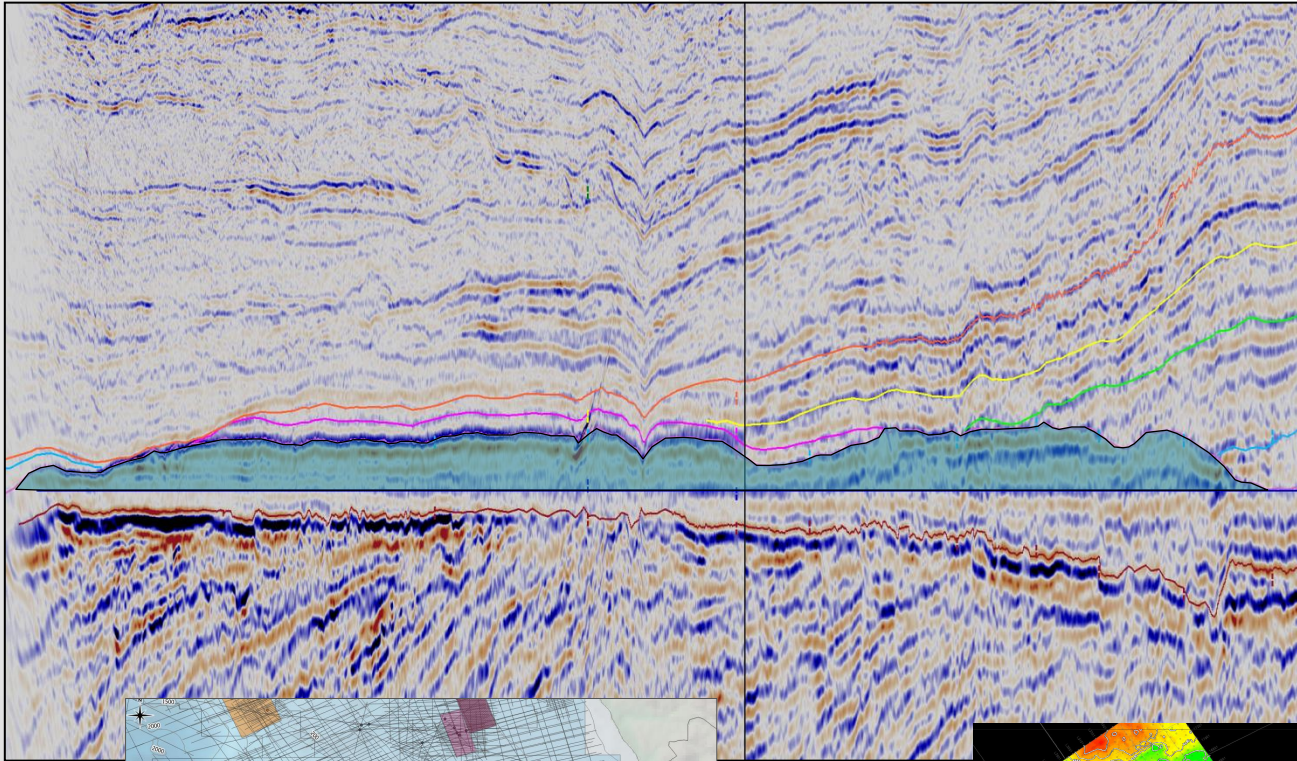
# Aptian Cabernet Lead: Large Structure with possible carbonates



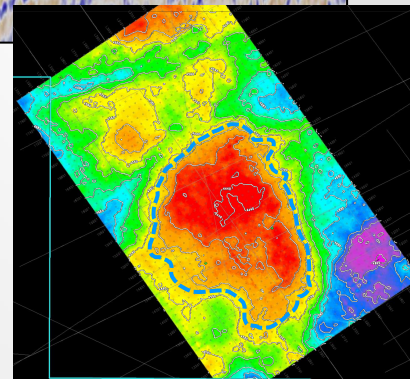
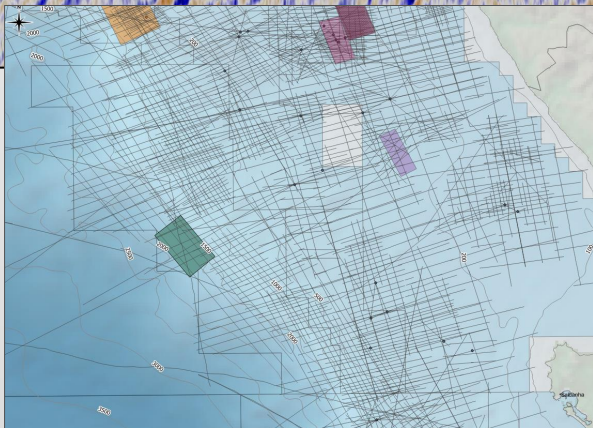
Hard event is lacking obvious clastic characteristics (channel cuts, etc.) but has well developed fracture pattern.



# Cabernet Lead Play Concept: Aptian Mounds: Carbonate Build-up over Basement High?

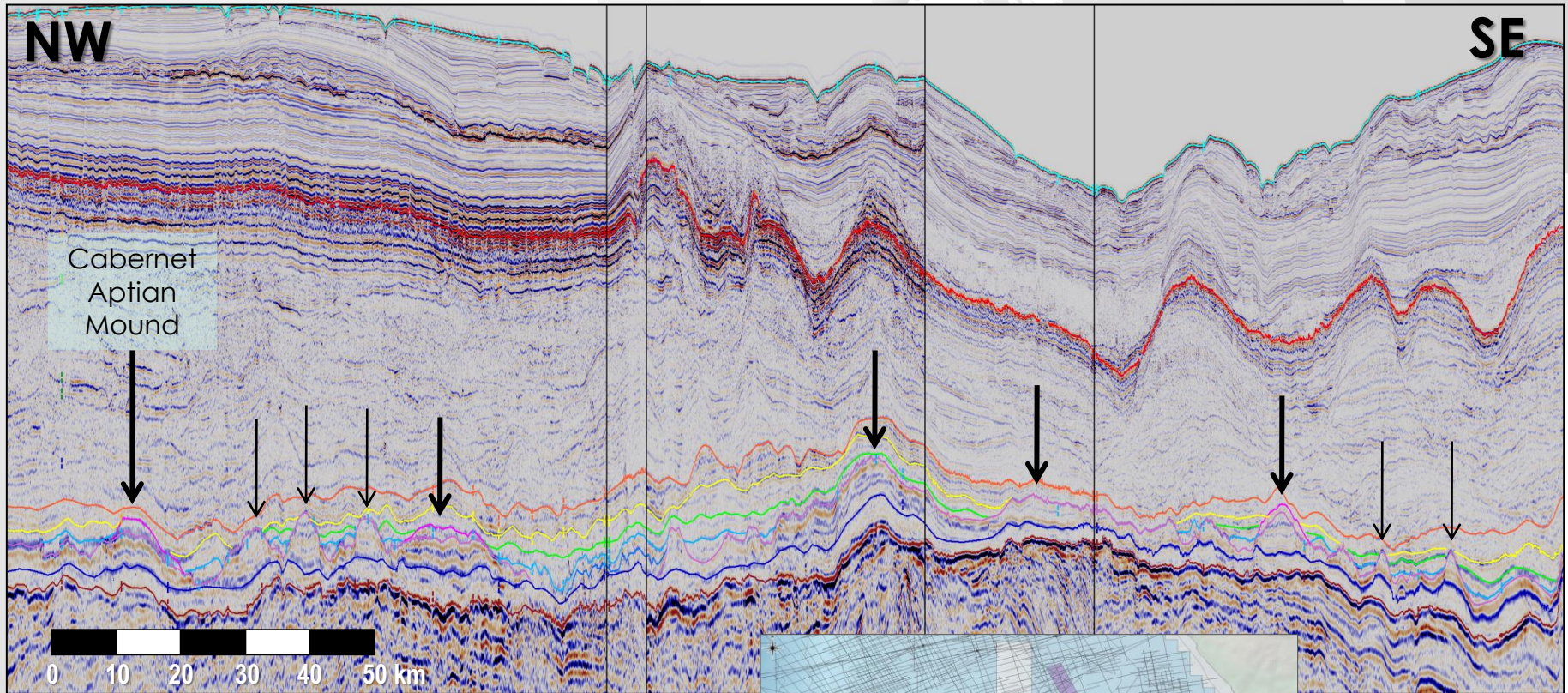


Aptian(?) age build-up  
carbonate reef?  
Topseal:  
slope/base of slope  
clastics

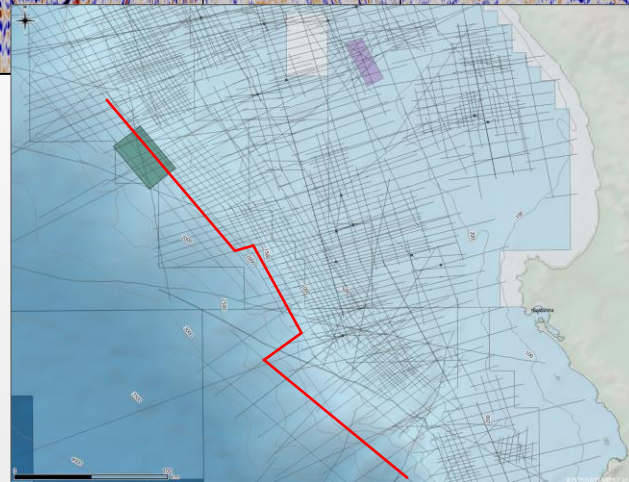




# Additional Aptian Mounds



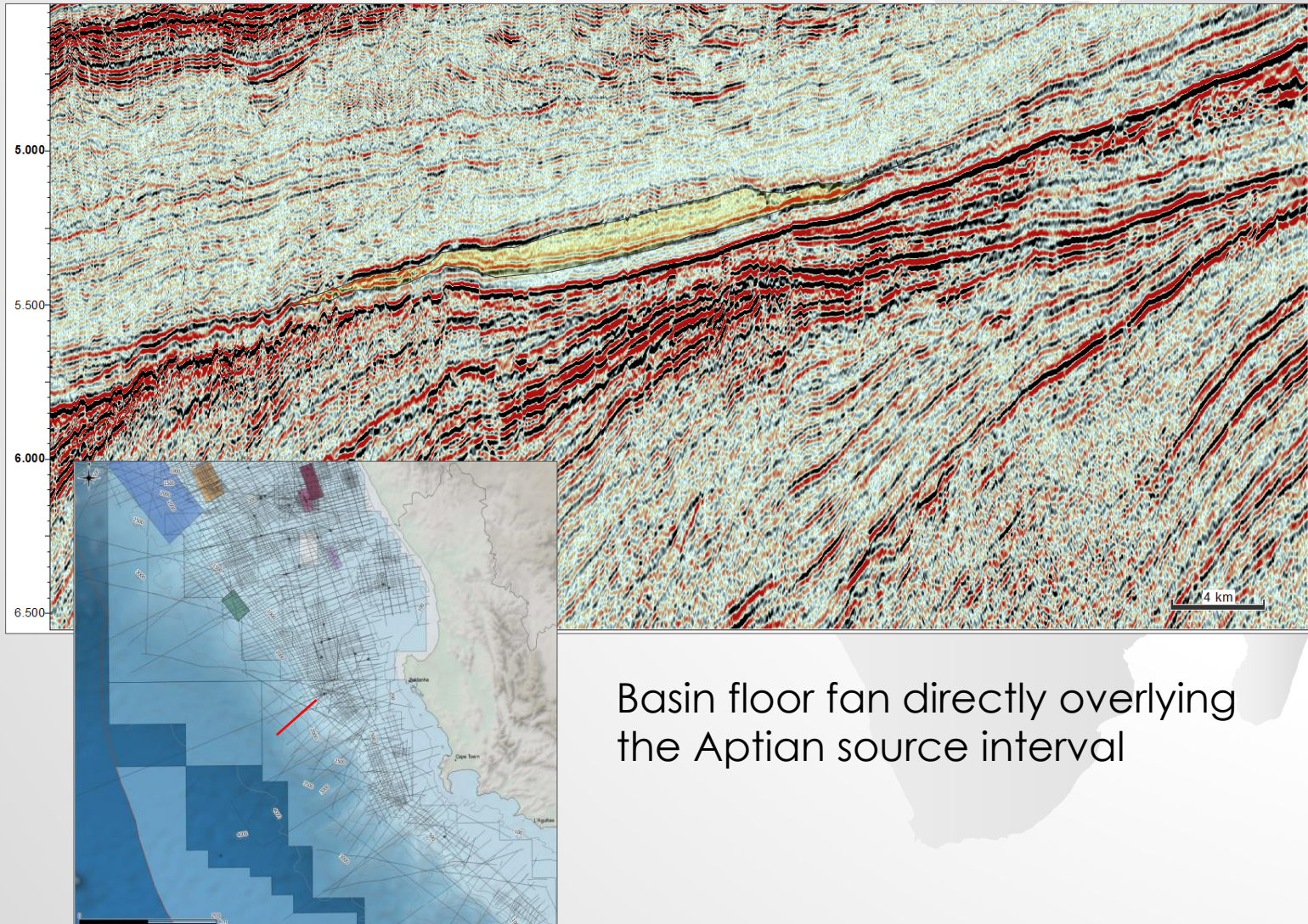
\*Additional stratigraphic potential between the mounds





# DEEP WATER AREA SOUTH

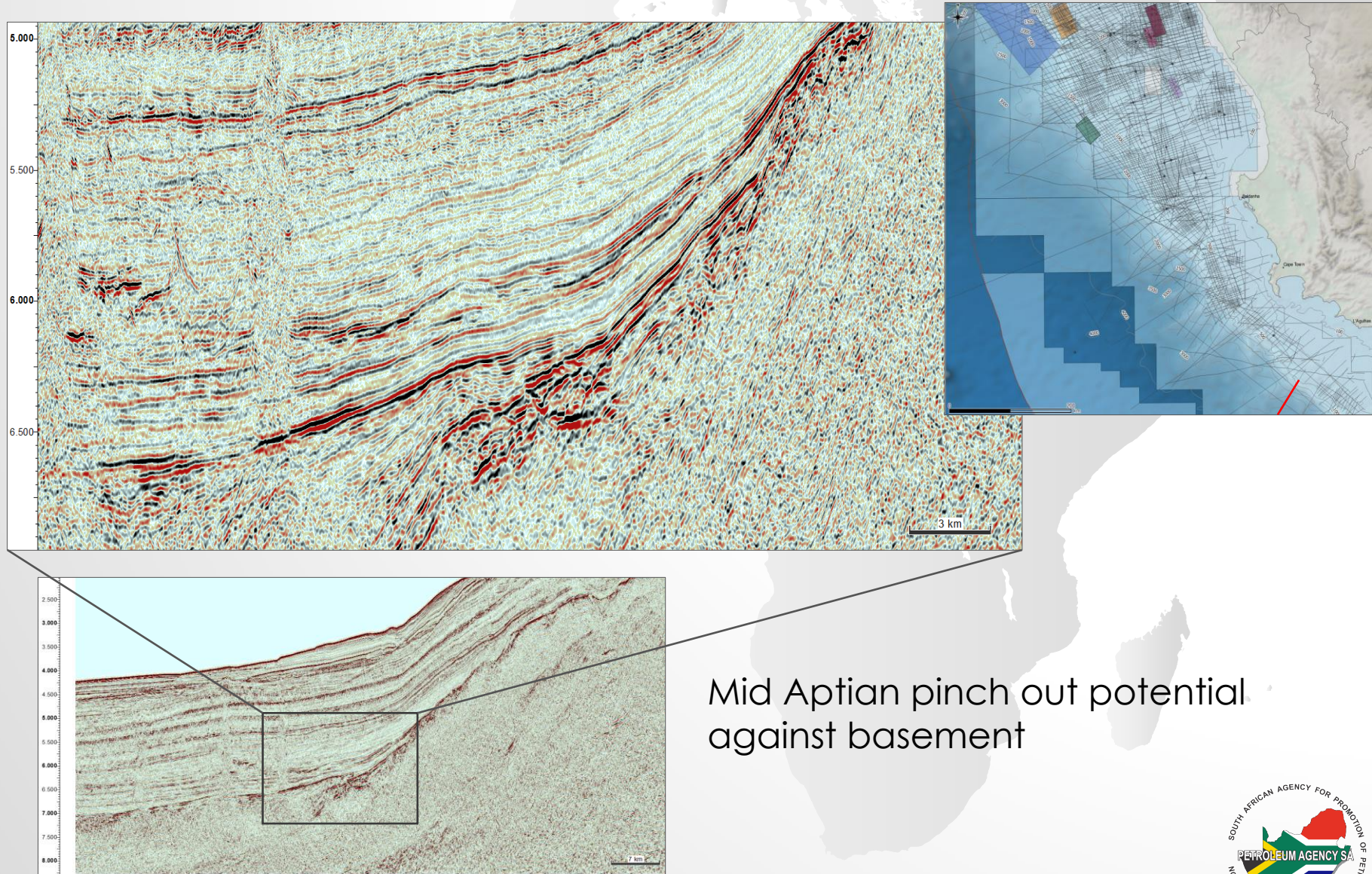
## Play concepts



Basin floor fan directly overlying  
the Aptian source interval



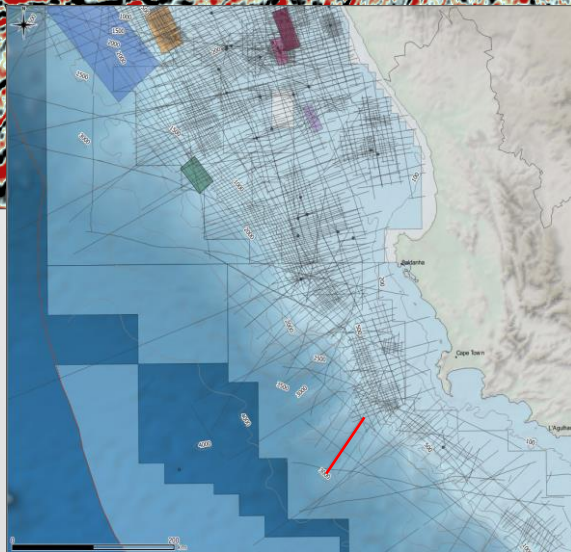
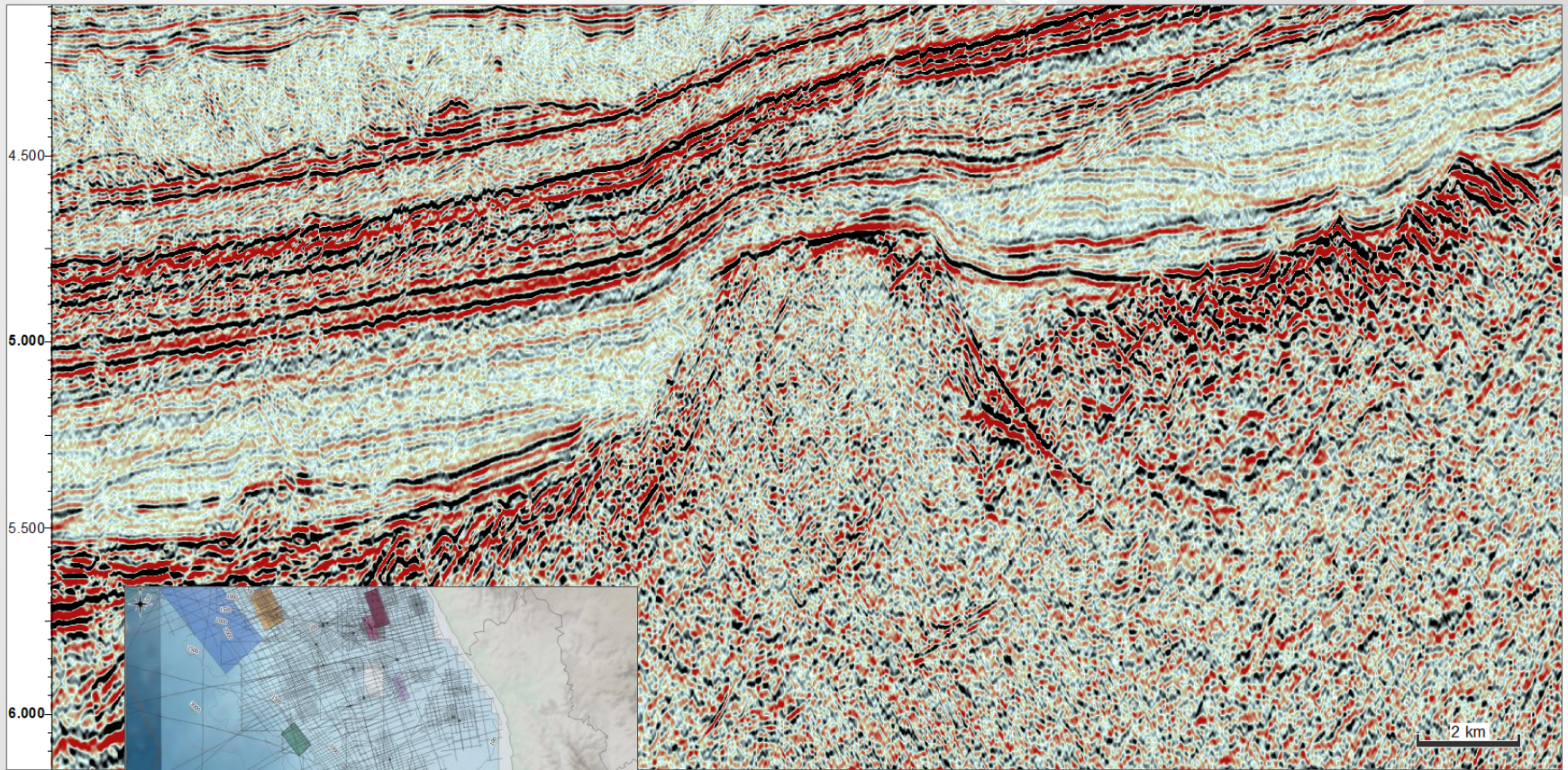
# Pinch out



Mid Aptian pinch out potential  
against basement



# Pinch out/drape



Potential pinch-out against  
basement high and sediment  
draping

# CONCLUSIONS

- Attractive play types
- Structural and stratigraphic closures
- Large exciting leads identified
- Encouraging source rock/maturity potential





# THANK YOU

