

# Recent Exploration Insights Orphan Basin, Offshore Newfoundland

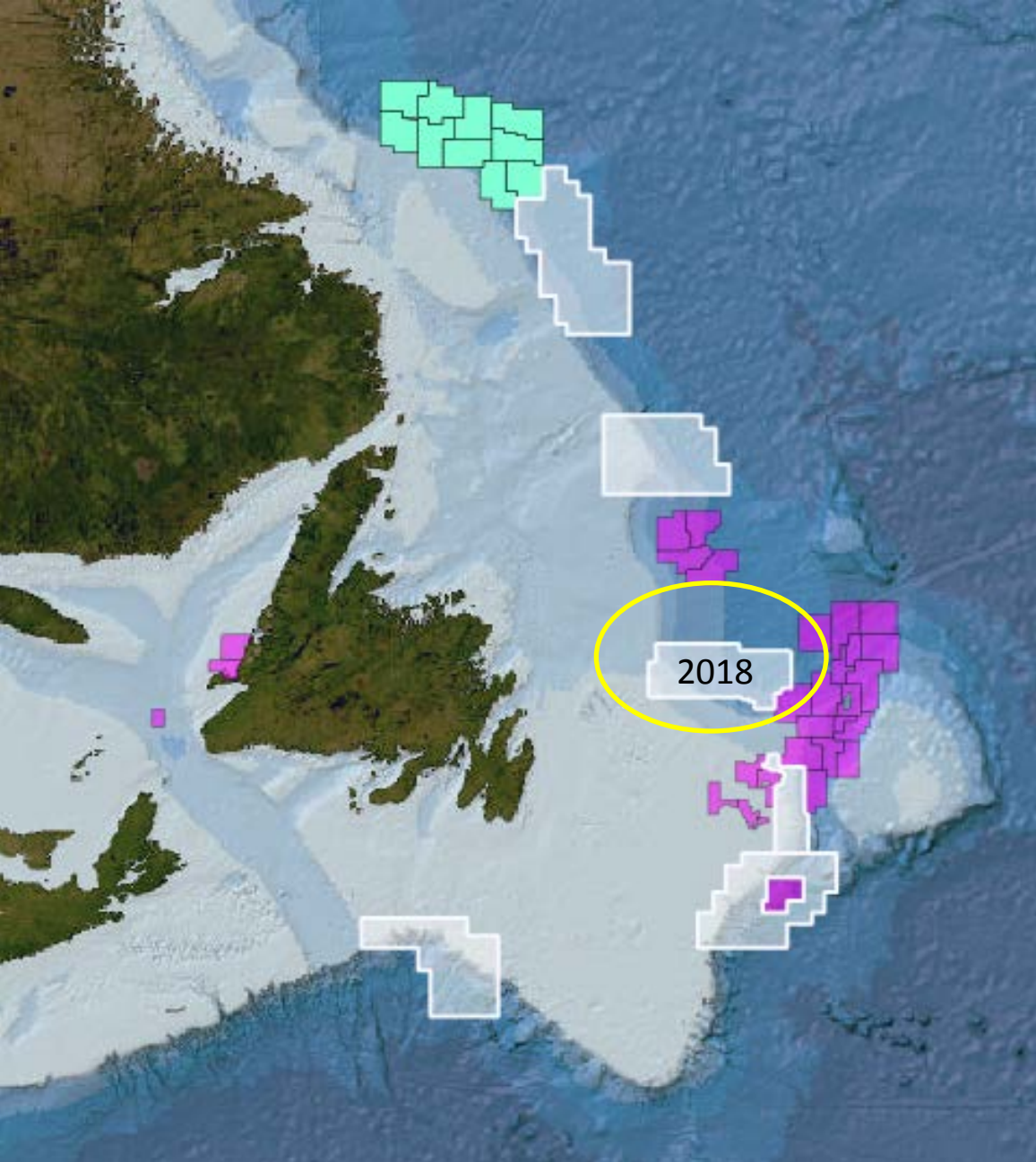
APPEX 2018

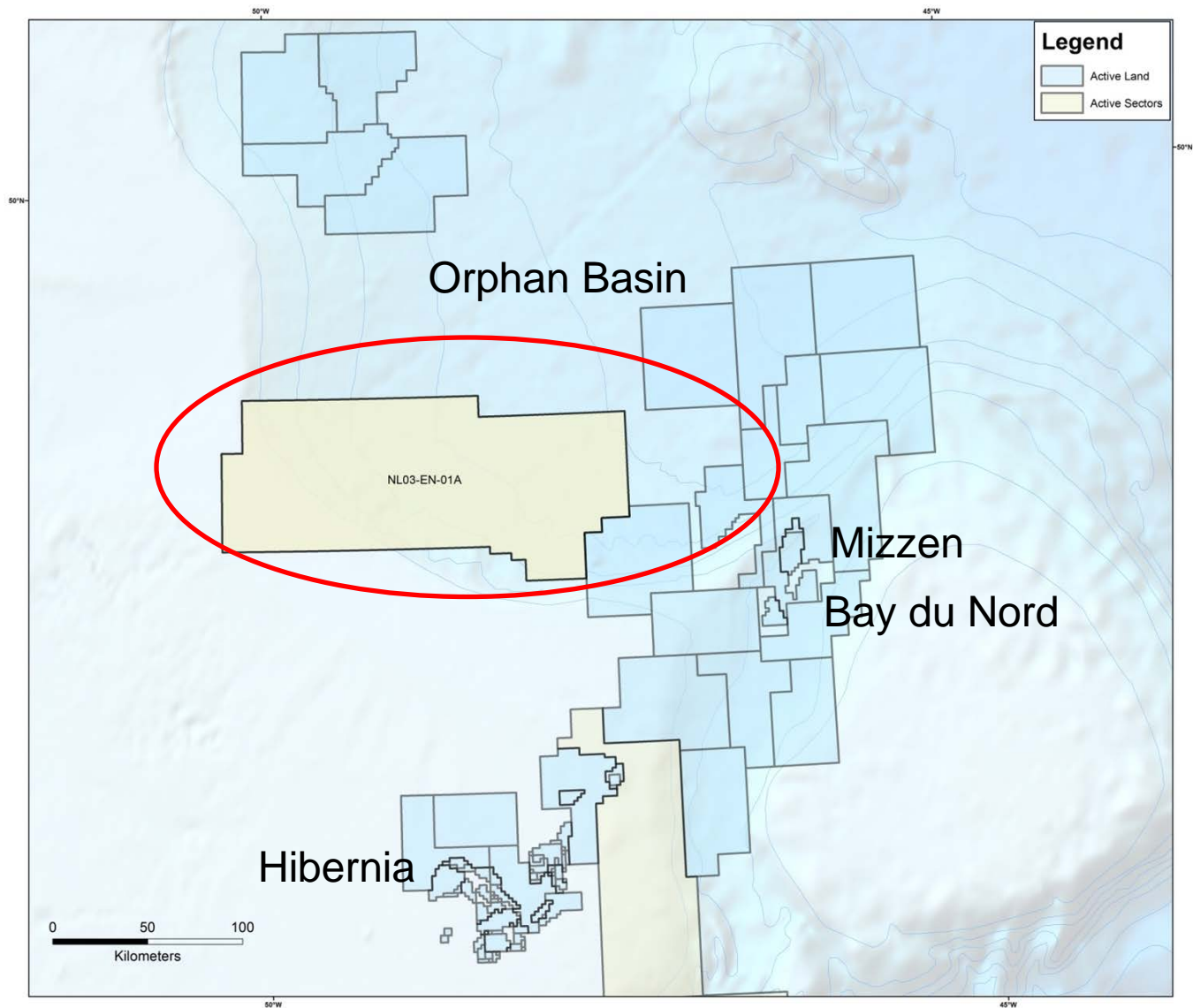
March 2018



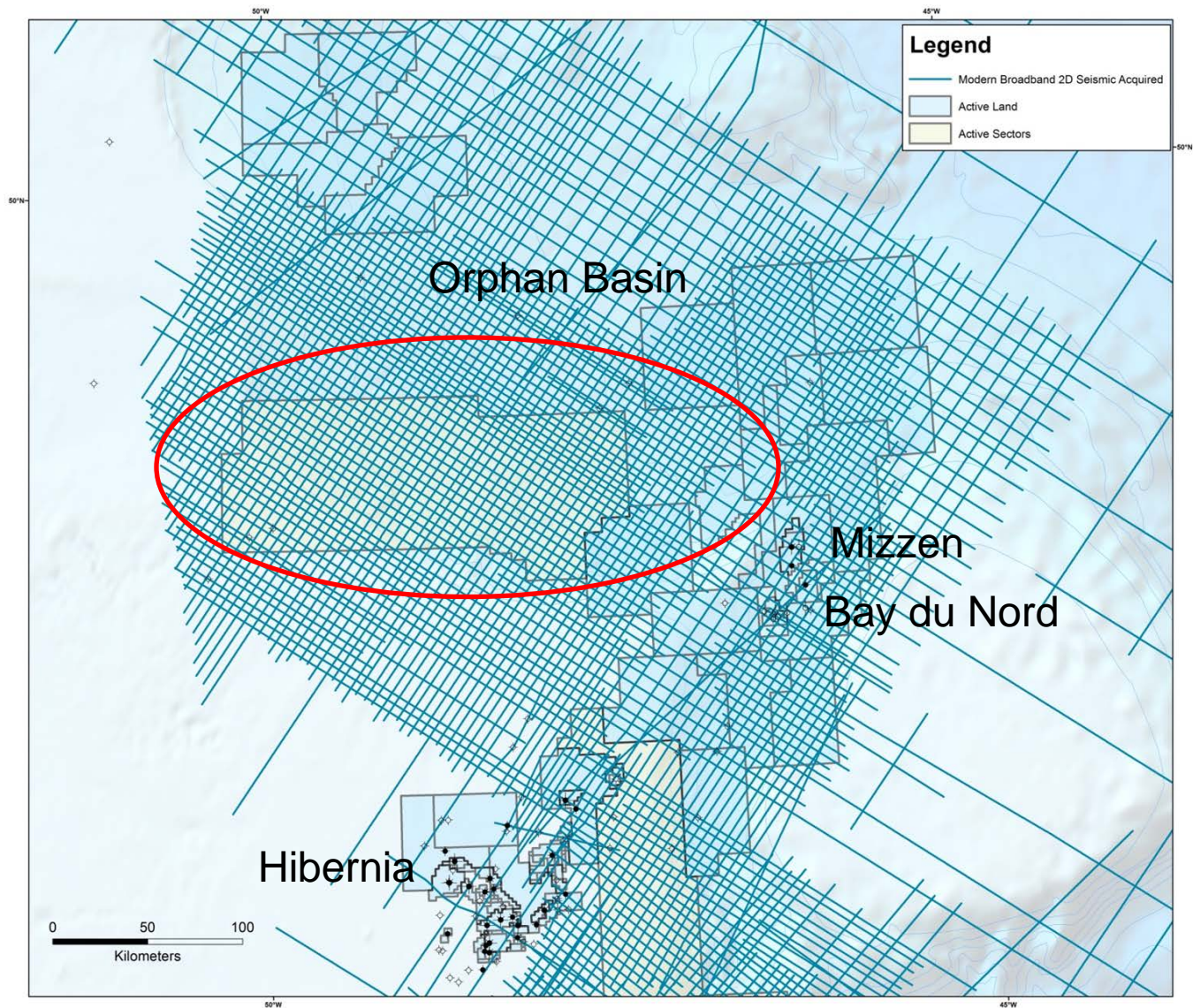
# NOTE

- Seismic slides and structure maps presented at APPEX in this presentation have been removed from this distribution version



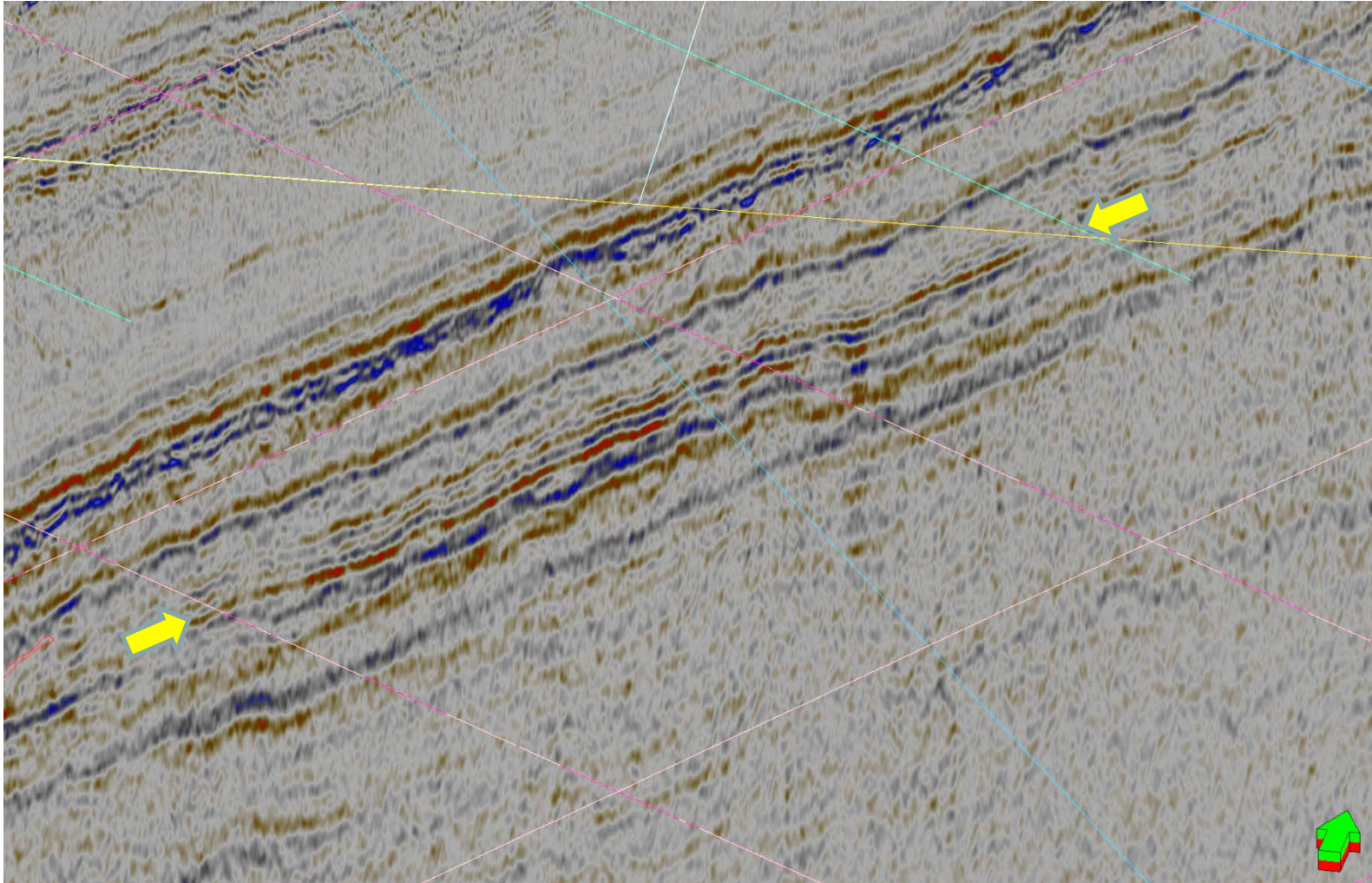








# Cretaceous Fan

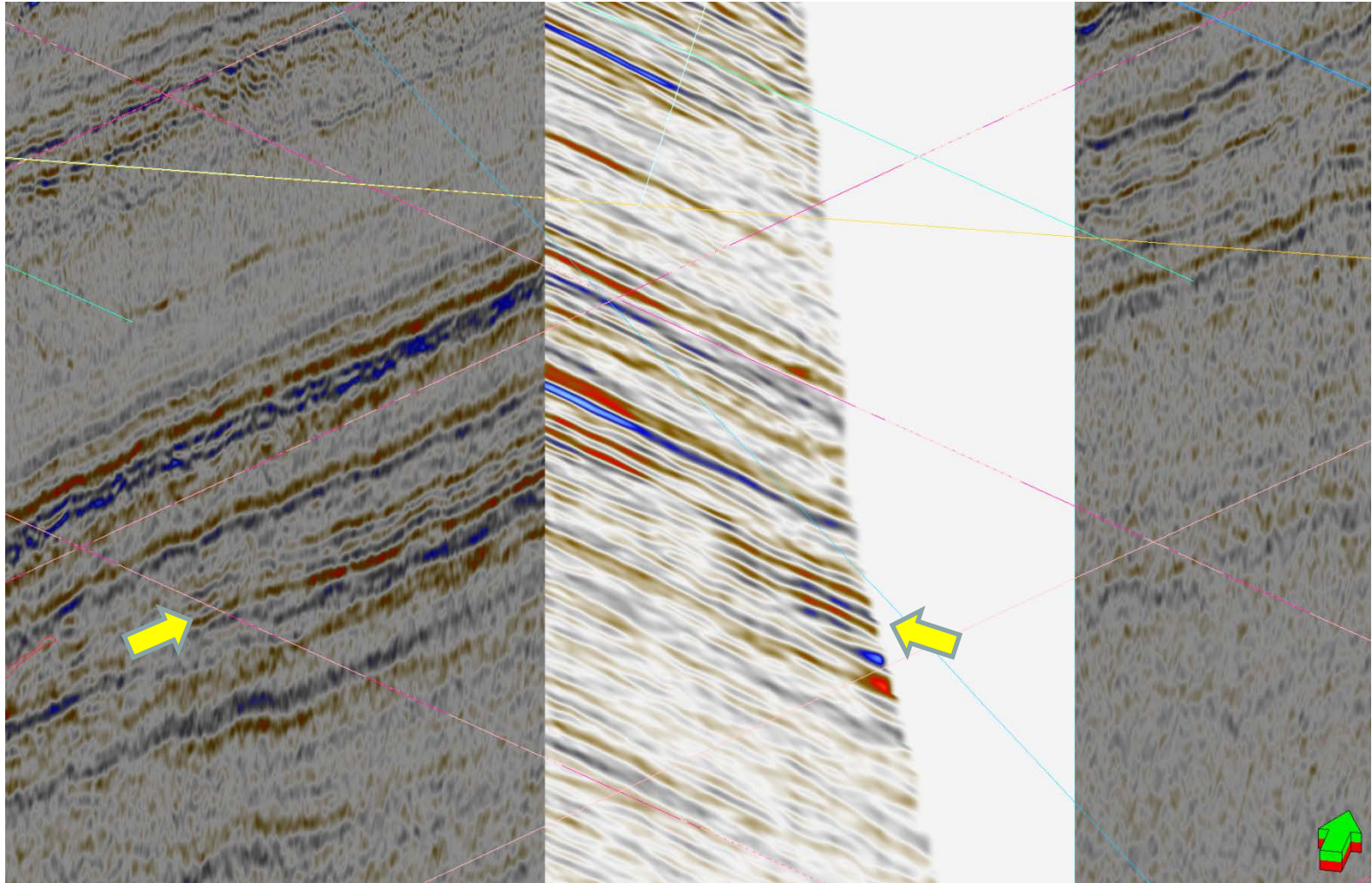


Near Angle

Far Angle



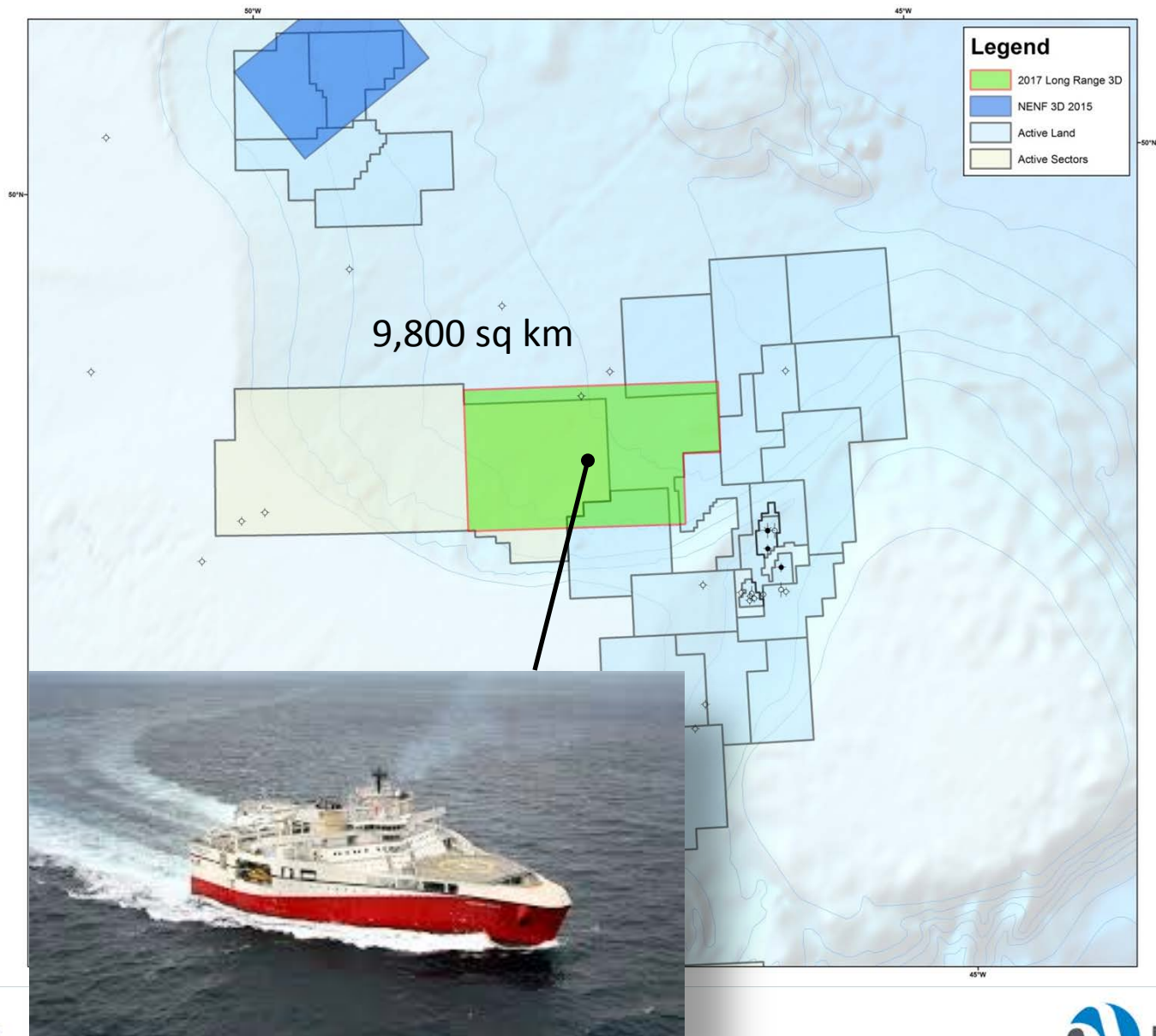
# Cretaceous Fan – CDP Gather



Near Angle

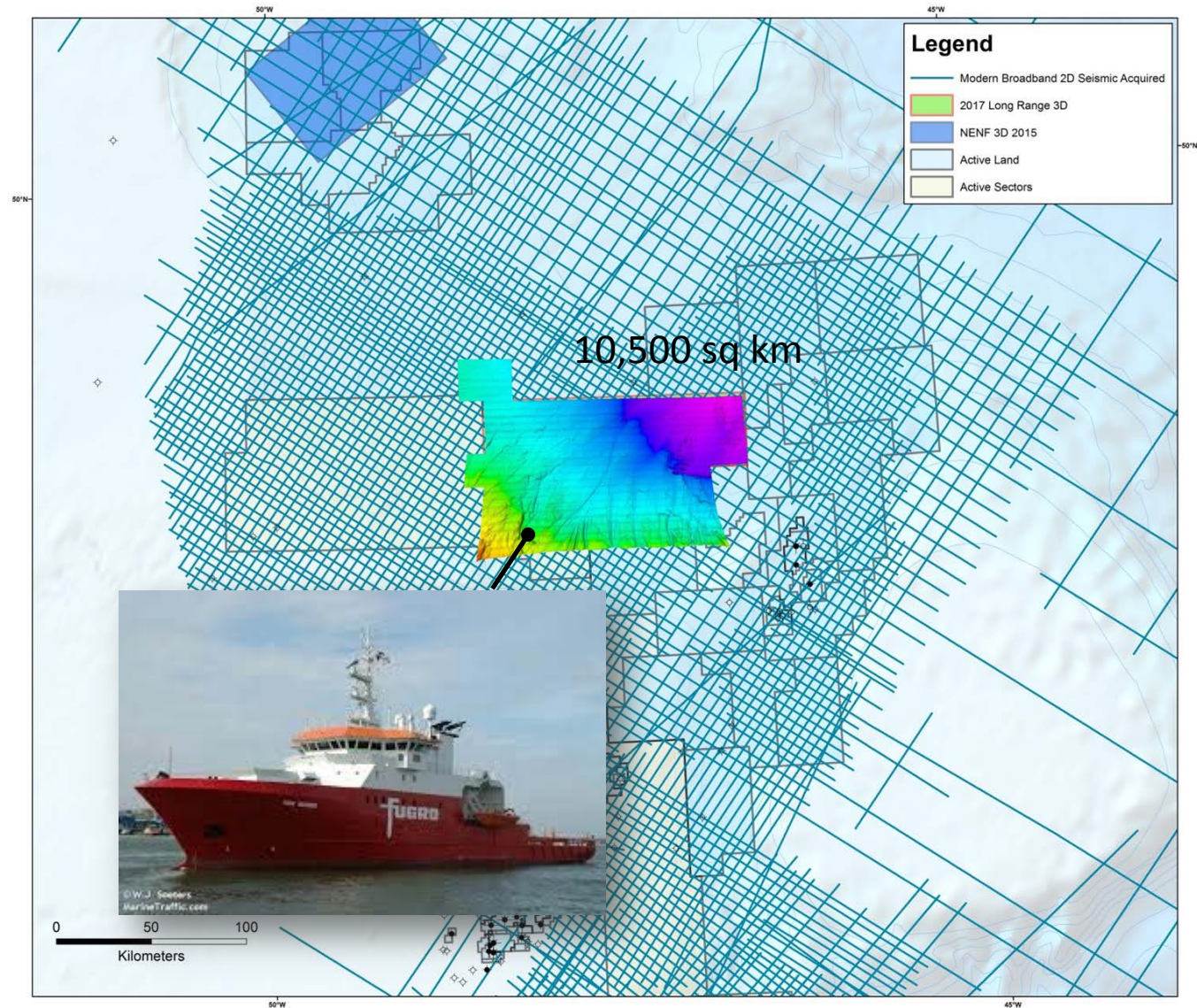
Far Angle

# 2017 3D Survey

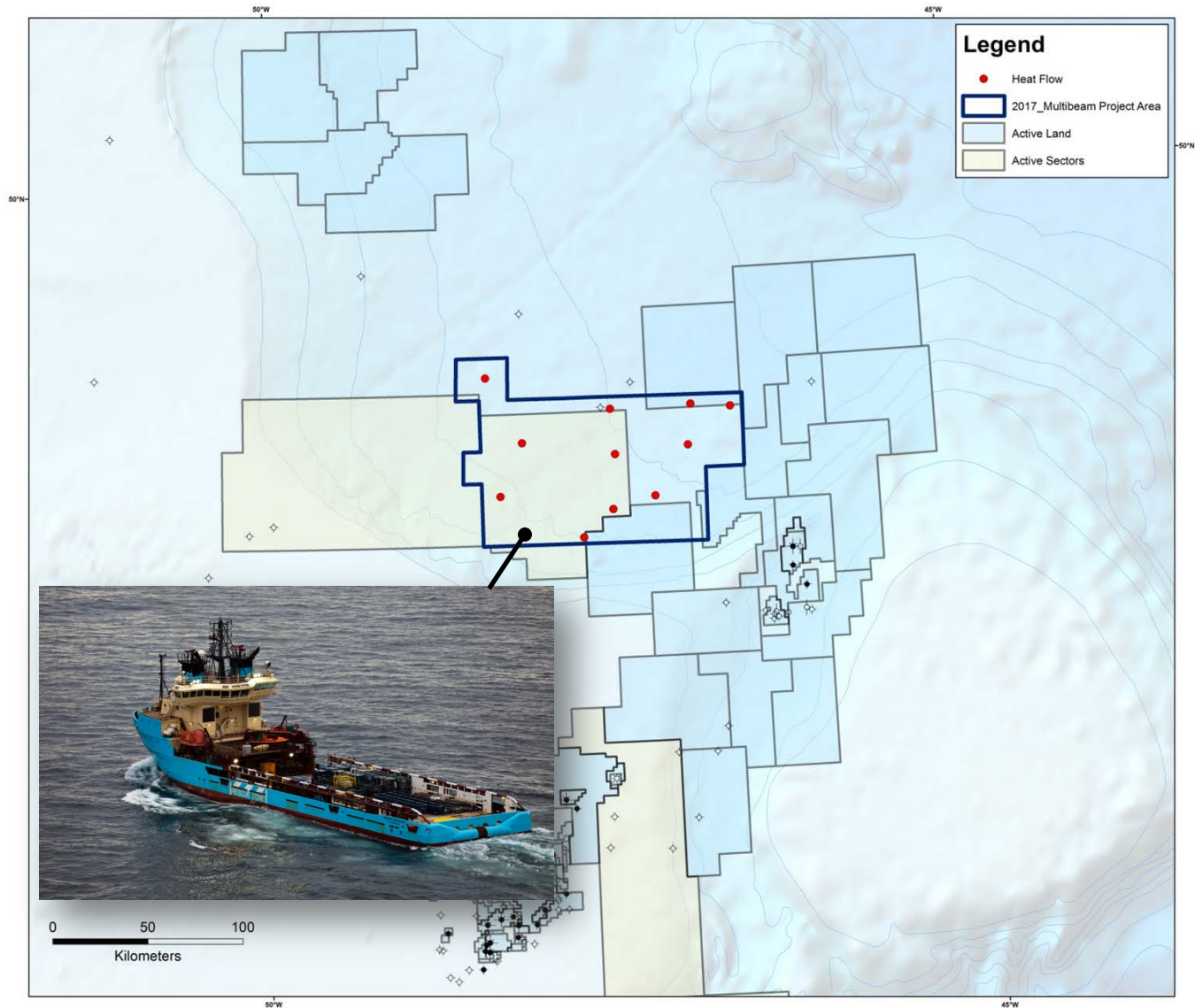




# Multibeam, Heatflow and Seabed Coring Program

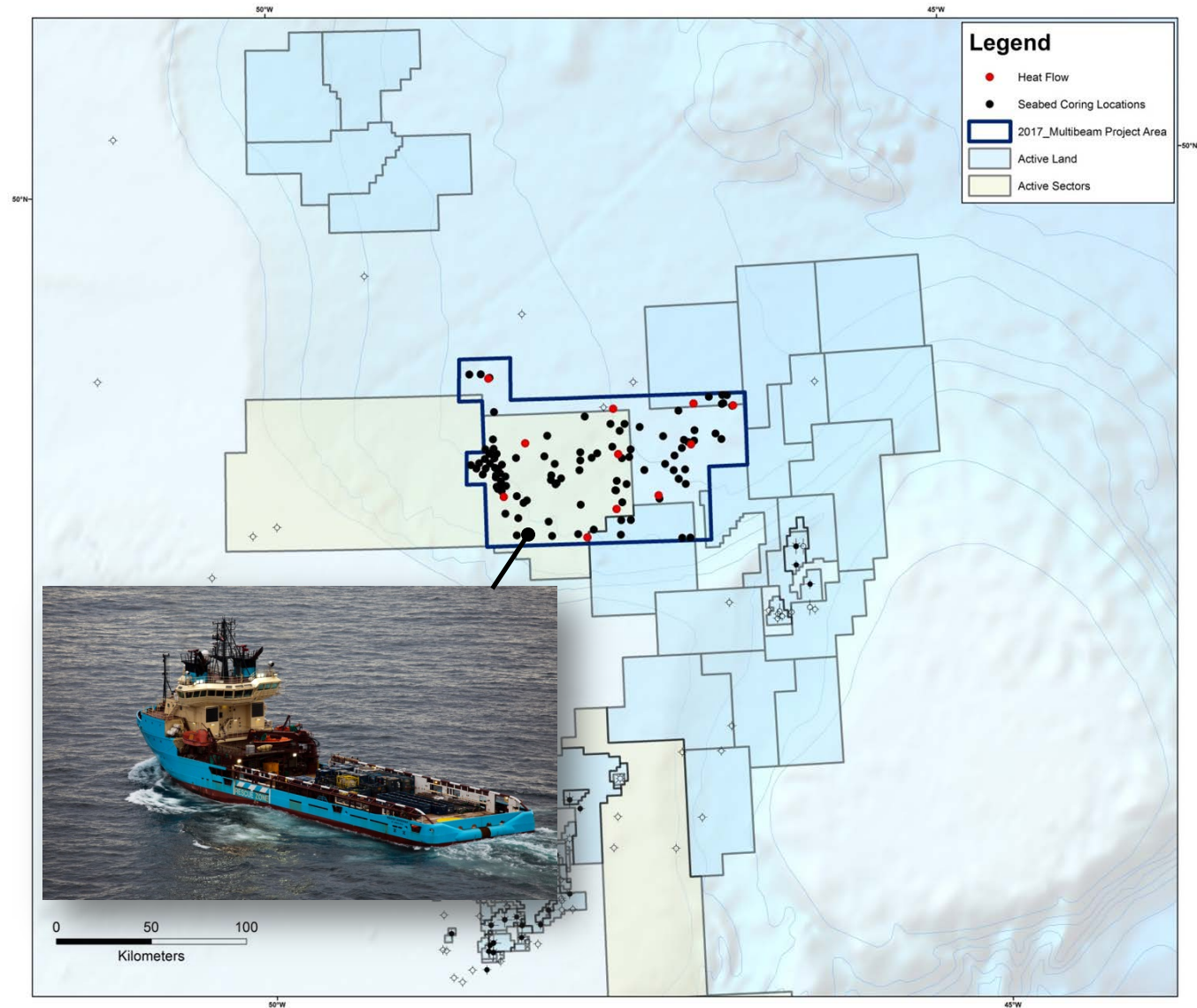


# Multibeam, Heatflow and Seabed Coring Program



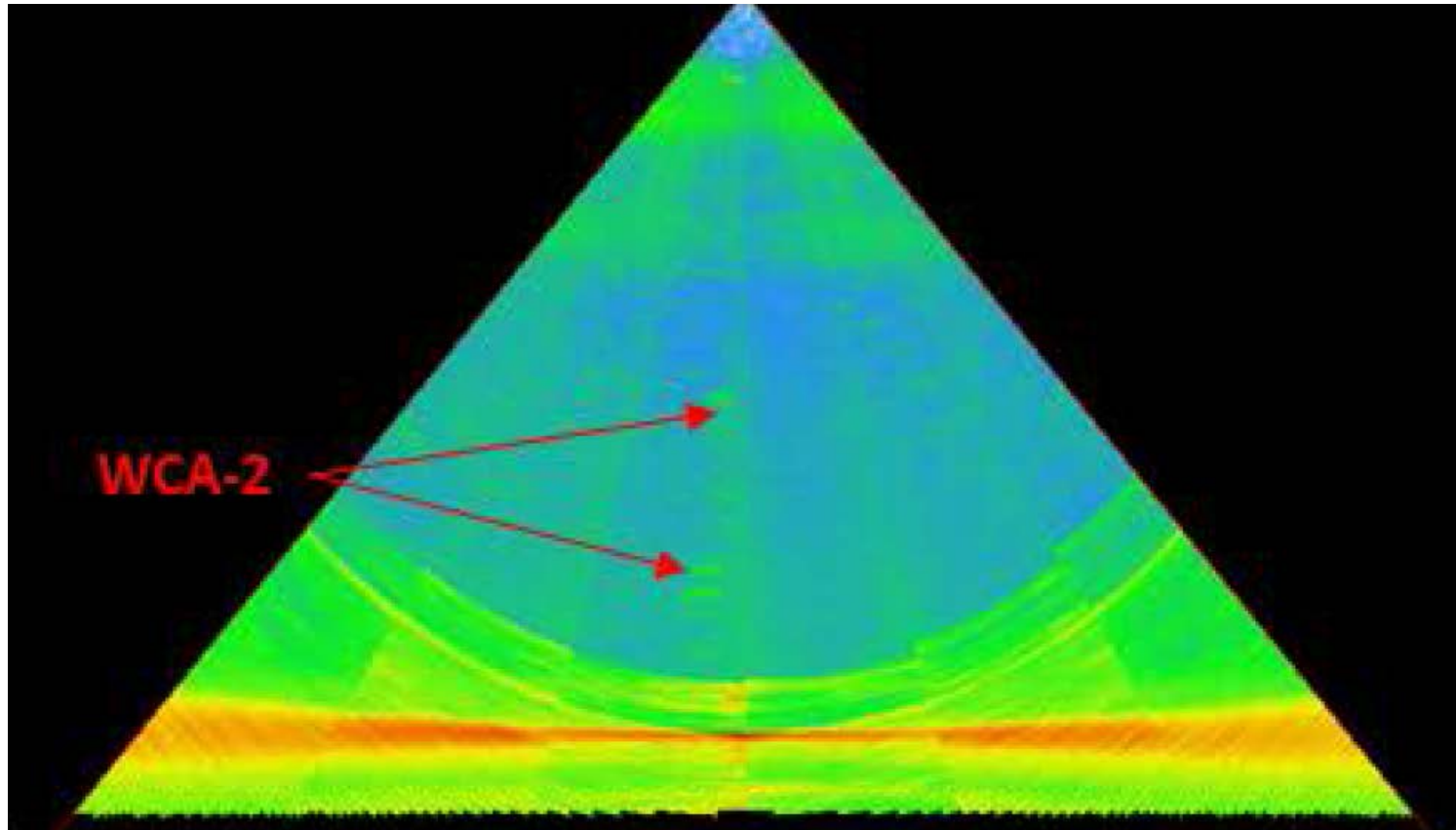


# Multibeam, Heatflow and Seabed Coring Program

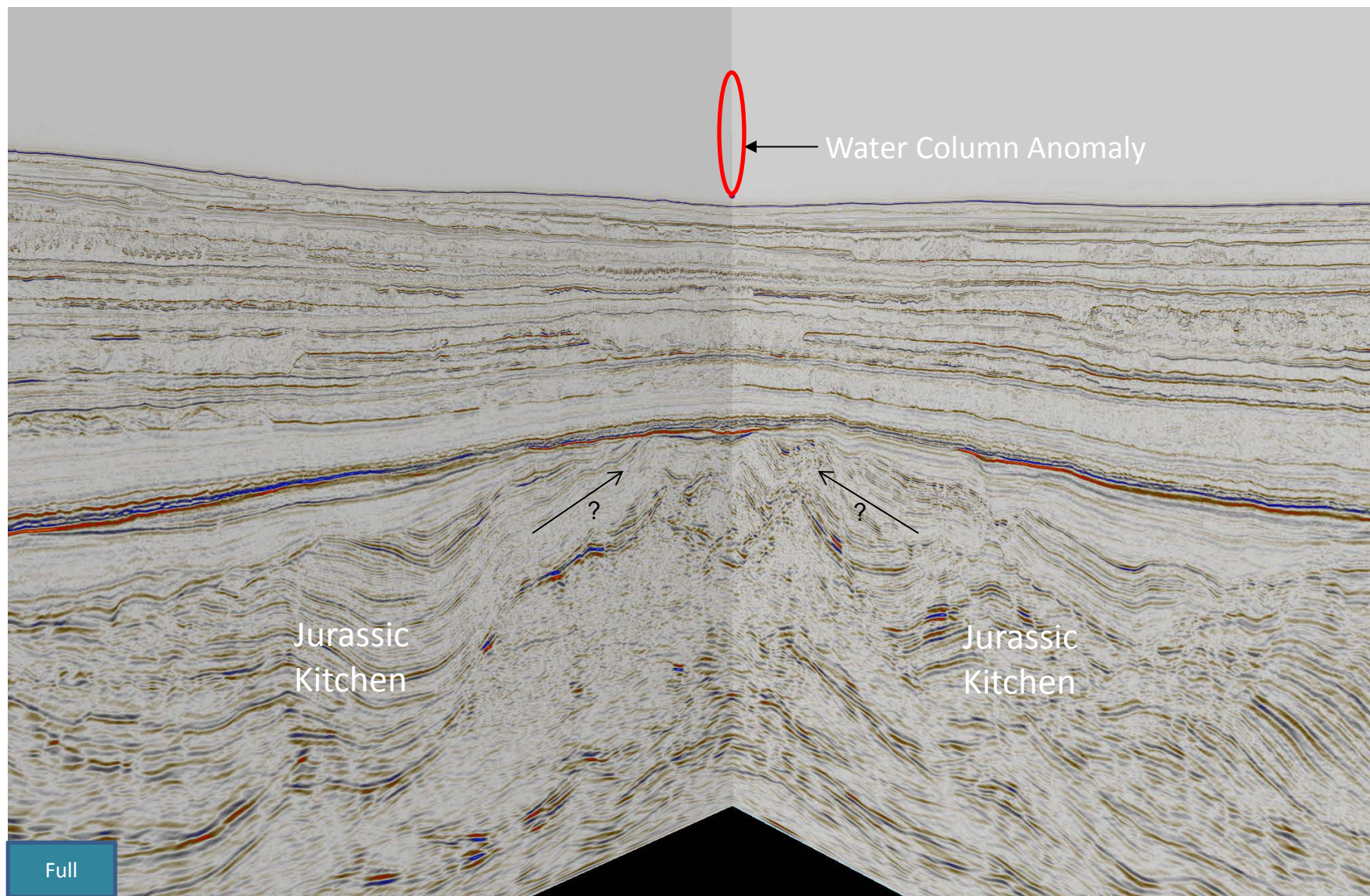




# Water Column Anomaly and Seabed Core Location



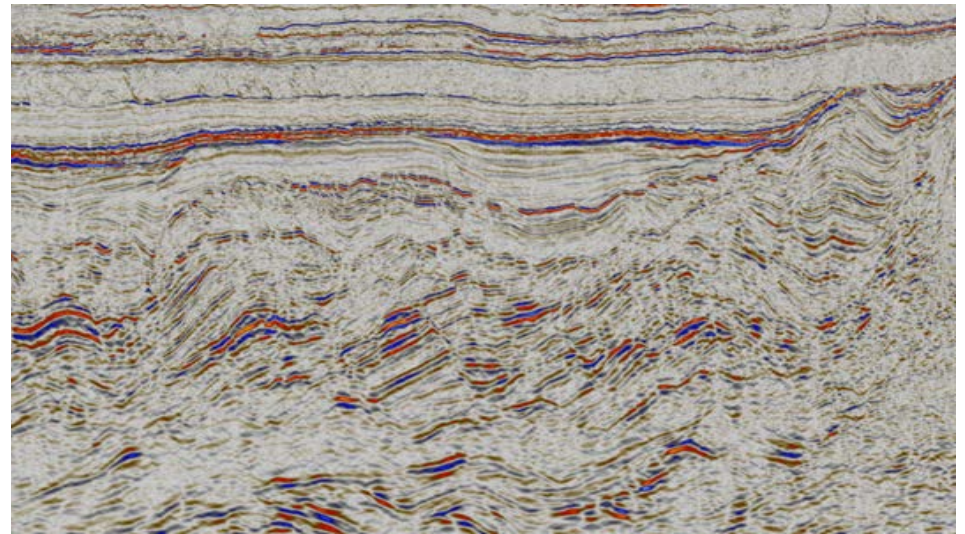
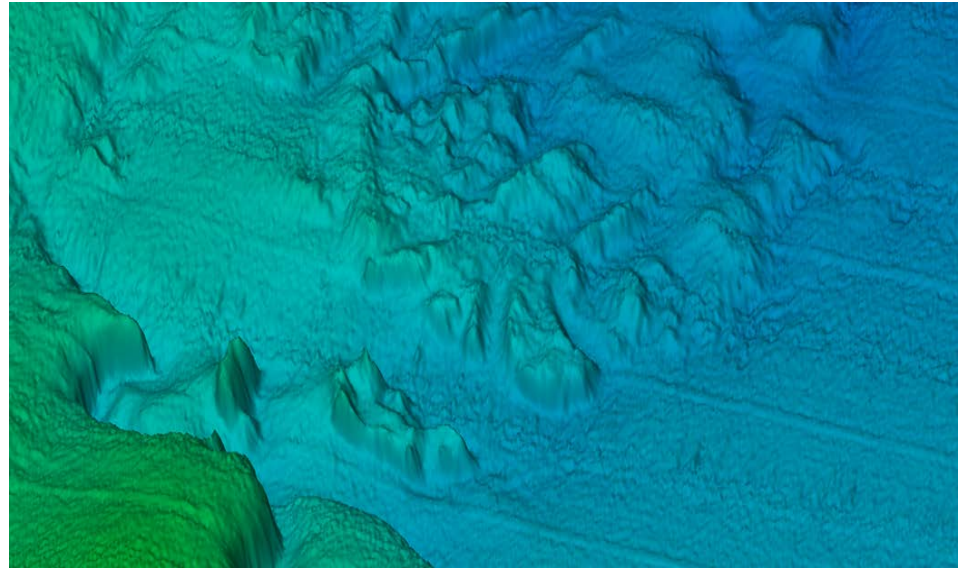
# Water Column Anomaly and Seabed Core Location





# Summary

- 2018 License Round in Orphan Basin contains amplitude supported Mesozoic structures and fans, and Tertiary fans
- Modern broadband 2D and 3D seismic and seabed coring (multiclient surveys) defining plays and prospects





# Thank you

[nalcenergy.com/exploration](http://nalcenergy.com/exploration)

