

**PEL-71, Prospect S**



**Booth #7**

**Drilling a Key Structural Test of the Emerging  
Upper Cretaceous Deepwater Clastic Turbidite Play**

**Namibia, Africa**



**APPEX Global, London, February 2018**



## Disclaimer and forward looking statements



These Presentation Materials do not constitute or form part of any invitation, offer for sale or subscription or any solicitation for any offer to buy or subscribe for any securities in the Company nor shall they or any part of them form the basis of or be relied upon in any manner or for any purpose whatsoever.

These Presentation Materials must not be used or relied upon for the purpose of making any investment decision or engaging in an investment activity and any decision in connection with a purchase of shares in the Company must be made solely on the basis of the publicly available information. Accordingly, neither the Company nor its directors makes any representation or warranty in respect of the contents of the Presentation Materials.

The information contained in the Presentation Materials is subject to amendment, revision and updating in any way without notice or liability to any party. The presentation materials contain forward-looking statements which involve risk and uncertainties and actual results and developments may differ materially from those expressed or implied by these statements depending on a variety of factors. No representation or warranty, express or implied, is made as to the fairness, accuracy or completeness of the information or opinions contained herein, which have not been independently verified. The delivery of these Presentation Materials shall not at any time or in any circumstance create any implication that there has been no adverse change, or any event reasonably likely to involve any adverse change, in the condition (financial or otherwise) of the Company since the date of these Presentation Materials.

The Presentation Materials are confidential and being supplied to you for your own information and may not be reproduced, further distributed, passed on, or the contents otherwise divulged, directly or indirectly, to any other person (except the recipient's professional advisers) or published, in whole or in part, for any purpose whatsoever. The Presentation Materials may not be used for the purpose of an offer or solicitation to subscribe for securities by anyone in any jurisdiction.



# Chariot Oil & Gas Namibia Exploration PEL-71 Acreage Position



**PEL-71 (2312/2412A)**  
Chariot 65%, Operator  
Area 16,801 km<sup>2</sup>  
WD 500m - 3,000m



## Initial Period & Minimum Work Program

- 4 years & 1,500km<sup>2</sup> 3D Seismic commitment

## Initial Period Work Completed

- Acquisition & Processing of 1,654km 2D seismic (2015)
- Acquisition & Processing of 2,600km<sup>2</sup> 3D seismic (2016), merged with existing 3D seismic data (6,100km<sup>2</sup>)

## First Renewal Period

- 2 years duration & 1 exploration well commitment
- Period to be entered prior to drilling campaign

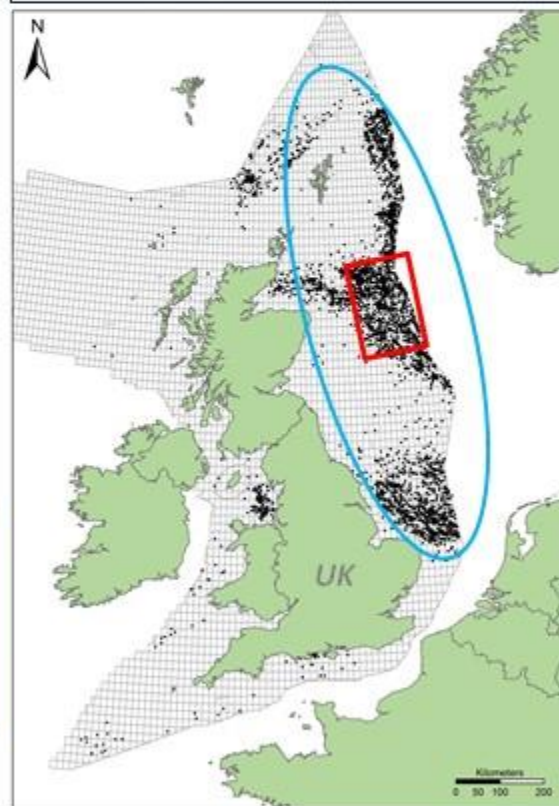
## Chariot's Forward Work Programme

1H 2018	2H 2018	1H 2019	2H 2019	1H 2020
Well Planning	Drilling*	Drilling**	Post-well Evaluation	
Well Partnering	Prospect S 459mmmbbls***	Prospect W 284mmmbbls***		

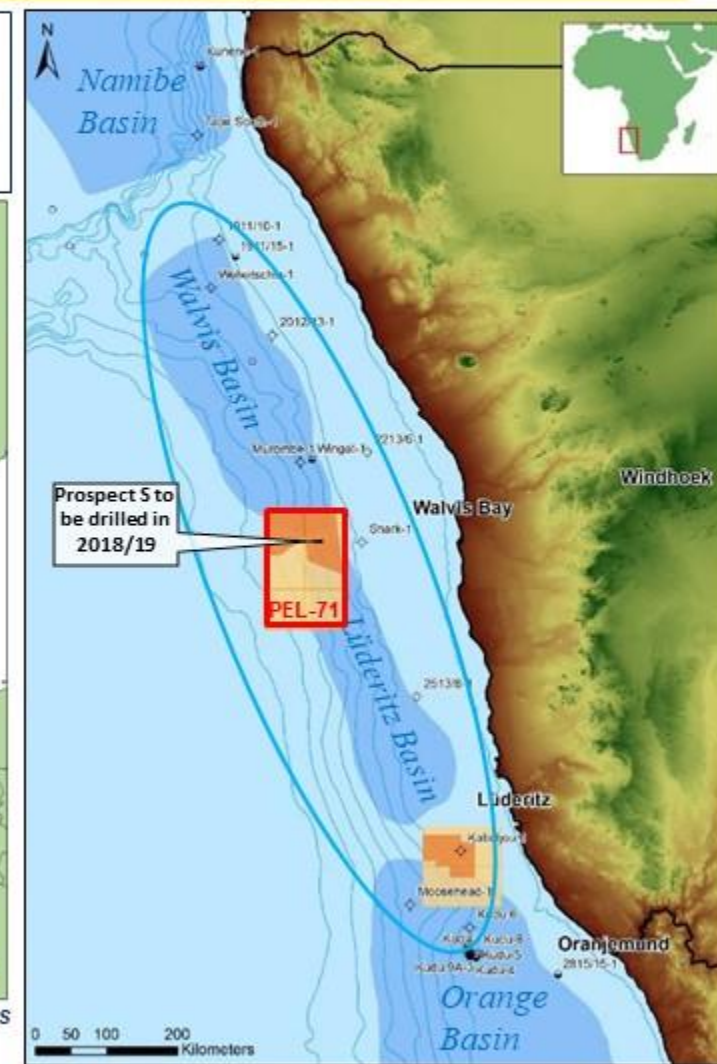
*Drilling of Prospect S planned in Q4-2018 - H1 2019 to test a low risk structural closure in the emerging Upper Cretaceous marine clastic play*

## Commercial Terms

- Royalty 5%, Corporation Tax 35%
- Additional Profits Tax above 15% IRR
- No capital gains tax



Walvis/Luderitz basins and PEL-71 extent vs UKCS

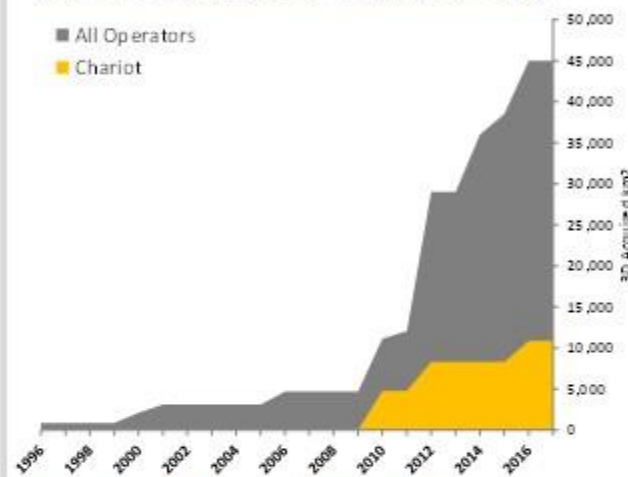




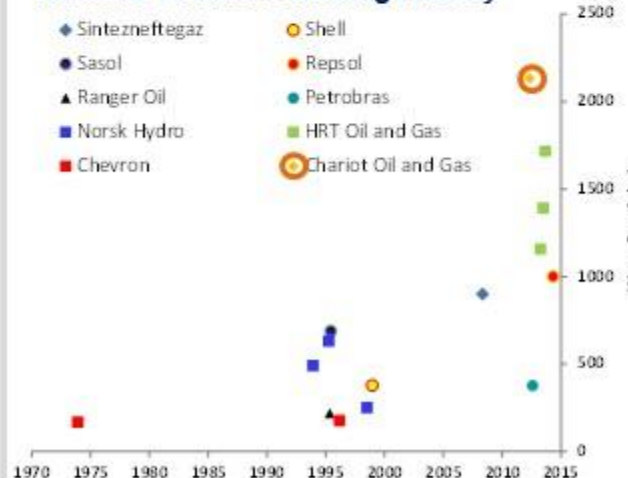
# Namibia Exploration History, Key Wells & Future Activity



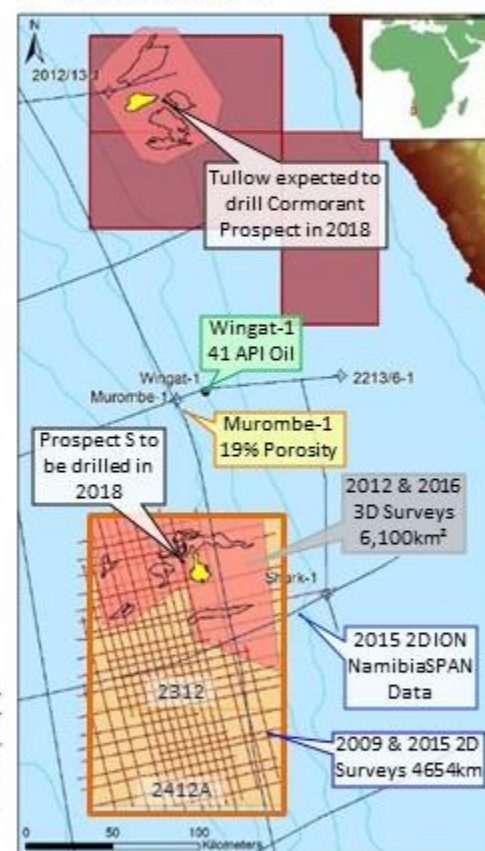
## Namibia Offshore 3D Seismic History



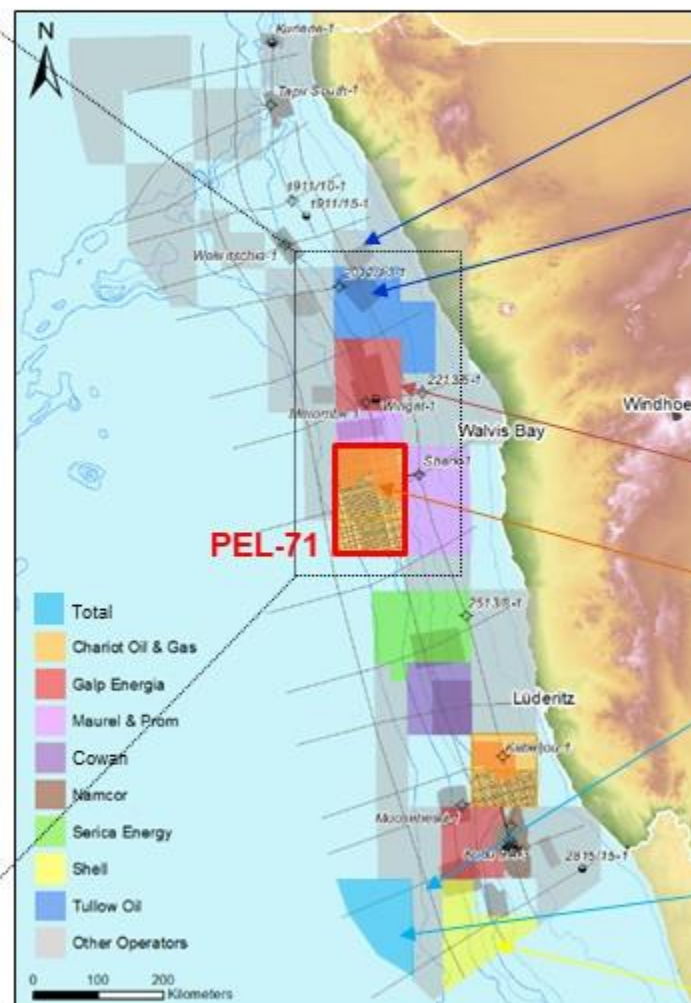
## Namibia Offshore Drilling History



## PEL-71 Database



- 4,654 km proprietary 2D
- 6,100 km<sup>2</sup> proprietary 3D
- 4,500 km regional Multiclient 2D
- Extensive legacy regional 2D



## PEL-30 (Eco Atlantic)

- Drilling EIA commenced
- ONGC Videsh farmin 15% from Tullow



## PEL-37 (Tullow)

- Tullow to drill Cormorant in September 2018
- ONGC Videsh farmin 30% from Tullow
- Africa Energy purchase of Pancontinental shares for effective 10% equity



## PEL-82 (Galp)

- ExxonMobil farmin 40%
- 3D seismic acquisition



## PEL-71

- Chariot to drill Prospect S in Q4 2018 / H1 2019



## Block 2913B (Total)

- Impact acquired 3D 2017
- Total farmin 70 % and take operatorship
- Drilling 2019?



## Block 2912 (Total)

- New block award



## PEL-39 (Shell)

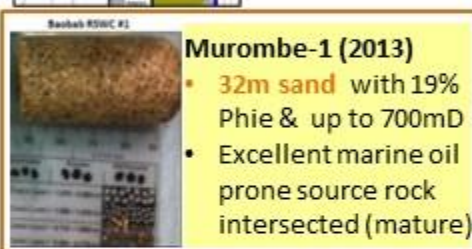
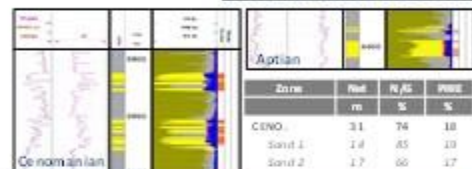
- Drilling EIA commenced





# Upper Cretaceous Deepwater Turbidite Clastic Play Elements Reservoir, Source & Structural Traps

## UPPER CRETACEOUS TURBIDITE RESERVOIRS



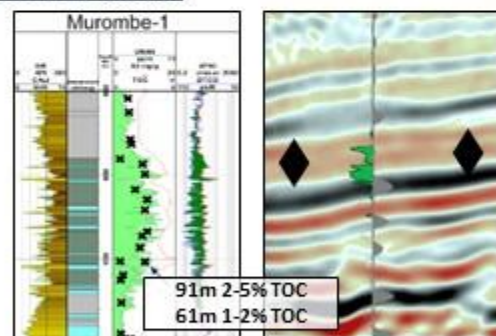
### Murombe well found good reservoirs in Cenomanian 'Baobab' sands

- Turbidite channel facies
- <700 mD permeability from SWCs
- Average porosity: 19%

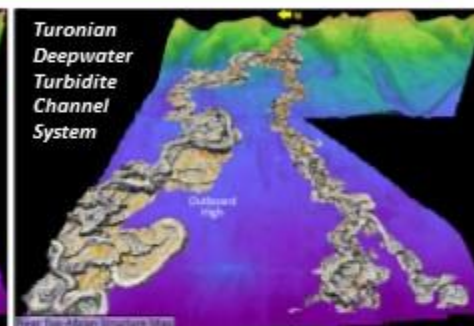
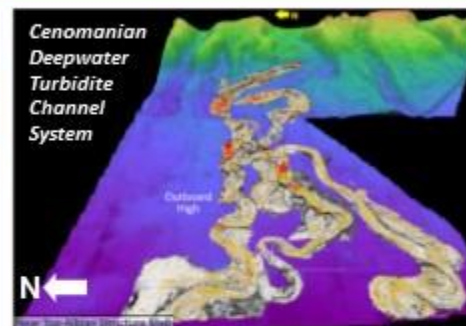
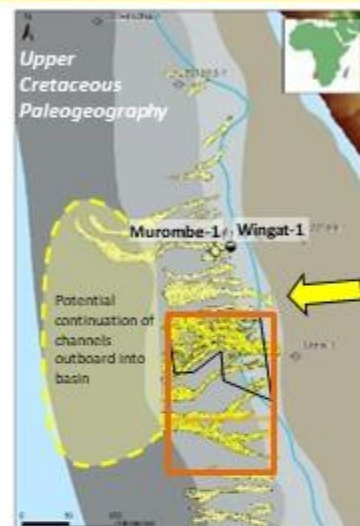
### Equivalent but larger reservoir systems identified on PEL-71 3D

- Secondary Aptian reservoirs in Murombe form additional targets in PEL-71

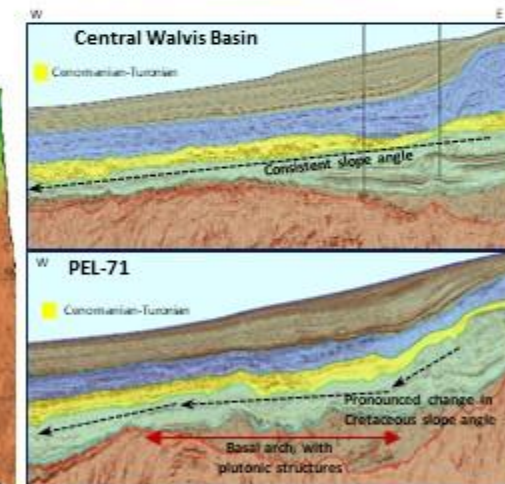
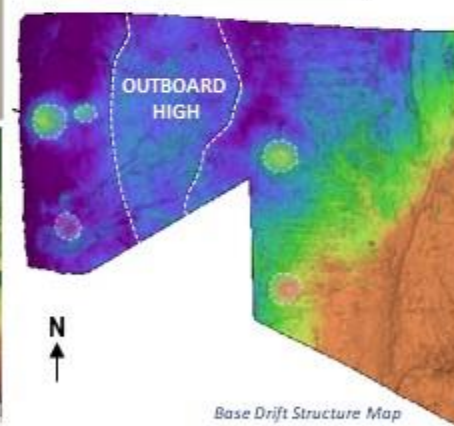
## APTIAN MARINE SOURCE ROCKS



- Aptian source at Murombe & Wingat (<5% TOC, 19 mg/g S<sub>2</sub> and 550 HI)
- Source rock is regionally extensive
- 41° API black oil recovered via MDT at Wingat from silts within the source rock



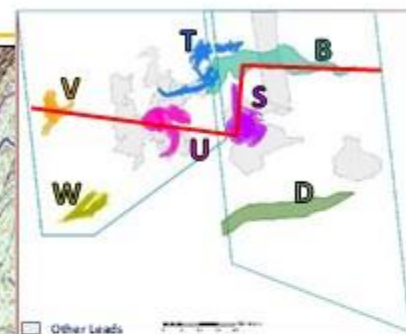
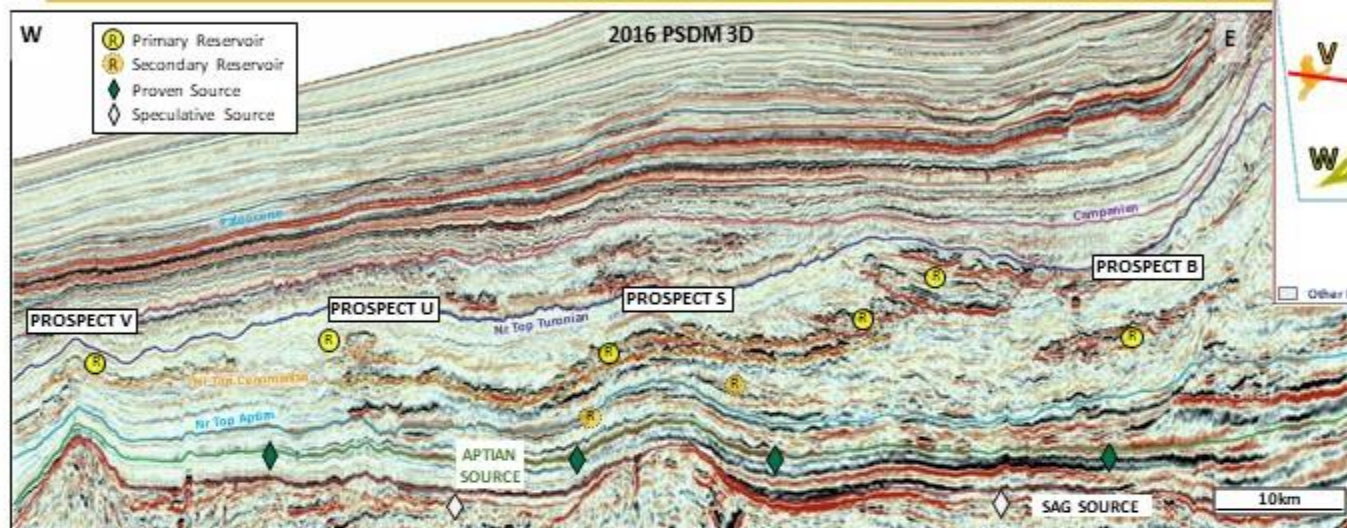
## STRUCTURAL TRAPPING



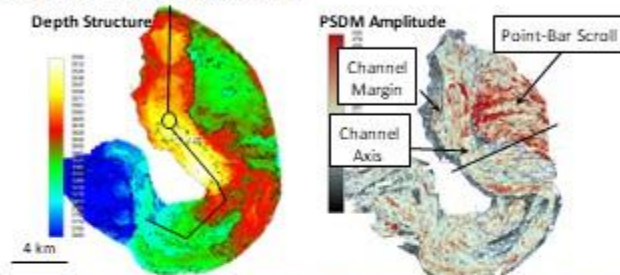
- PEL-71 is over a basal arch between Walvis & Luderitz sub-basins, reducing slope gradient causing thick reservoir development
- Discrete igneous-supported highs and/or differential compaction give rise to large structural traps
- Structures are strong foci for regional and local HC migration



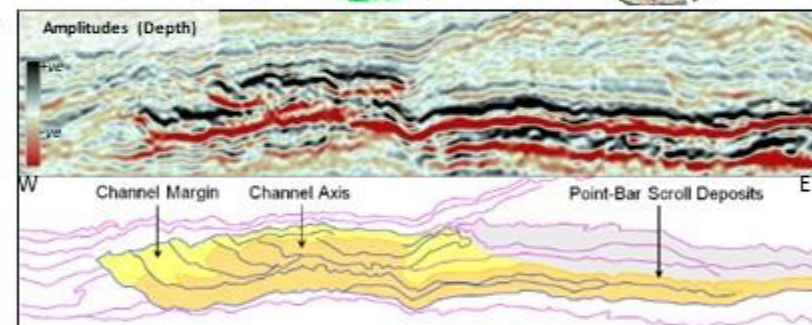
# PEL-71 Prospectivity Prospect S Description



## S94 Primary Objective



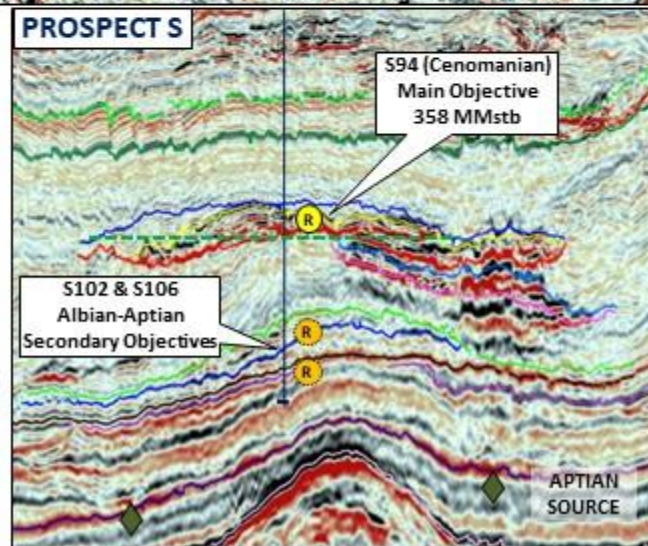
## S94 Reservoir Facies Detail



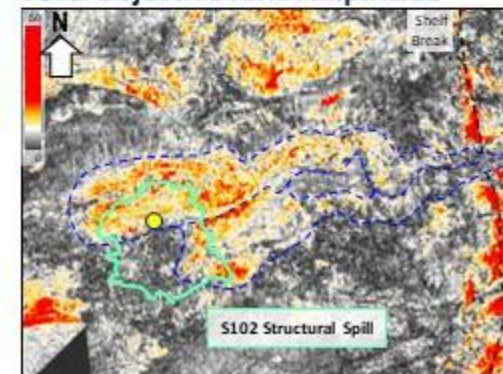
## PROSPECT S – FIRST EXPLORATION WELL

1,500m WD, 4,100m TD

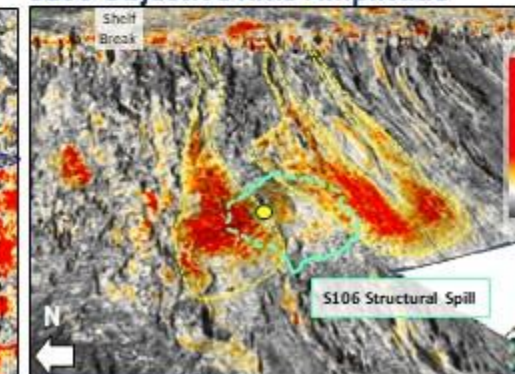
- Ideally located to test petroleum system in low-risk structural trap with multiple objectives
- Primary objective S94
  - Equivalent to Baobab sands
  - 358 MMstb Pmean Prospective Resources
  - 72 km<sup>2</sup> (18,000 acre) closure with 130m column
- Secondary objectives: S102 & S106 (Apto-Albian)
  - Equivalent to targets being drilled by Tullow
  - Structural closures with stratigraphic upside
  - 200 MMstb to 1 Bstb potential



## S102 Objective RMS Amplitude



## S106 Objective RMS Amplitude





# PEL-71 Prospectivity Follow-on Potential



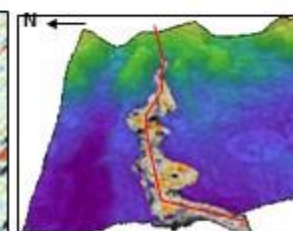
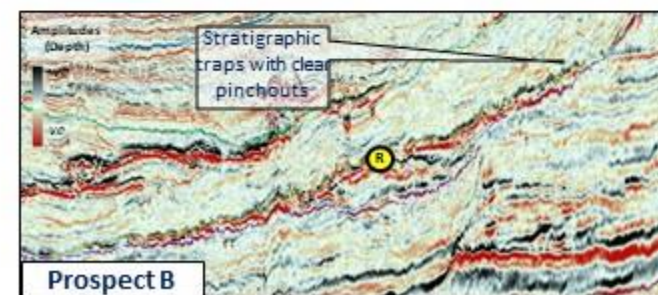
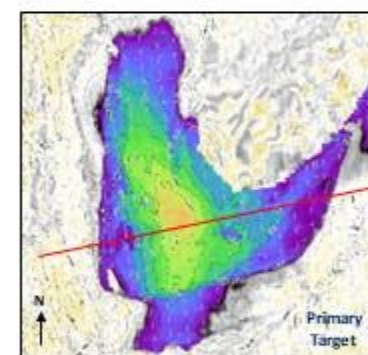
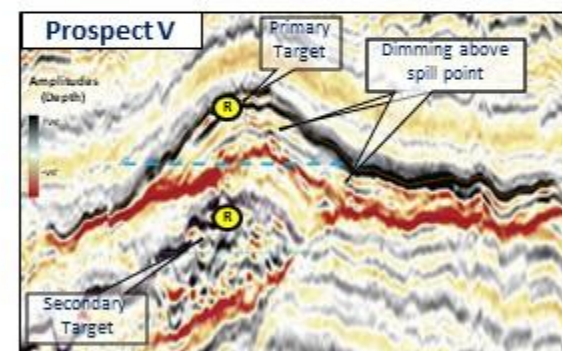
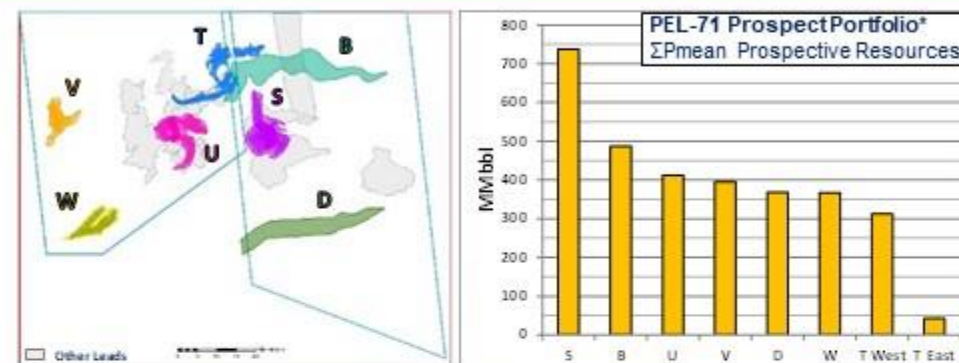
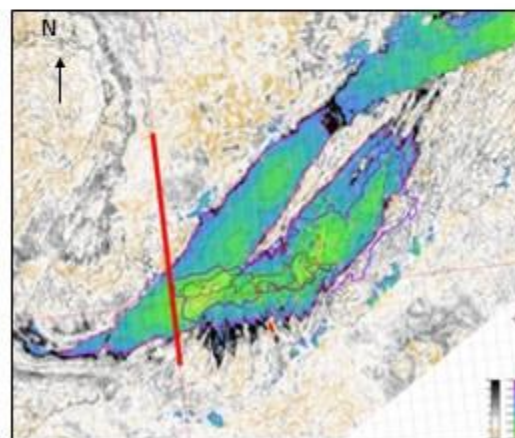
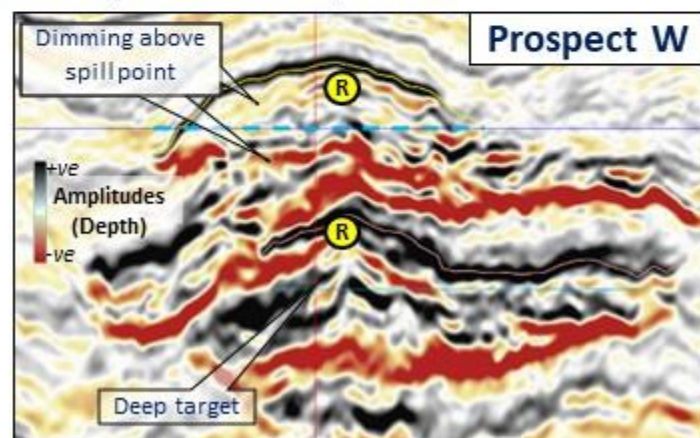
## FOLLOW-ON PORTFOLIO

- 4 large structural closures would be de-risked by successful drilling at Prospect S
- 2 material stratigraphic traps, Prospects B & D, exist at the head of the Cenomanian turbidite channel systems
- Portfolio contains numerous additional closures and leads across various reservoir targets, covered by both 3D and 2D data

## PROSPECT W

2450 m WD, 1600 m BML

- Optional drilling if Prospect S successful
- 45 km<sup>2</sup> structural closure within same deepwater channel complex as Prospect S
- 269 MMstb (Pmean\*) primary objective
- Multiple stacked objectives



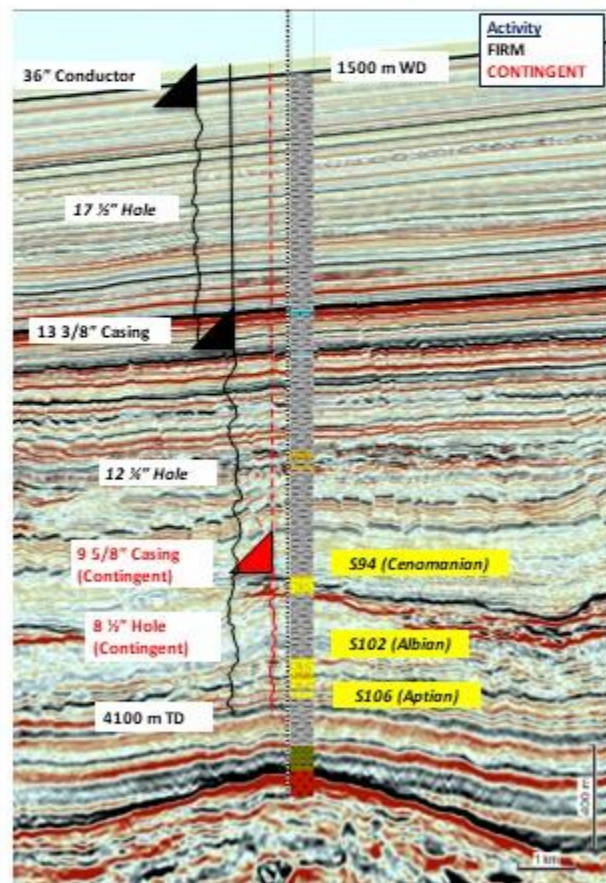


# PEL-71, Namibia, Farmout Opportunity Forward Work Program & Deal Terms



## Forward Work Program

Prospect S Exploration Well  
1540 m WD, 4100 m TD



- Gross well cost 20-25 M\$
- Q4 2018 - H1 2019 spud, according to rig availability
- EIA ongoing (ECC approved)
- Drilling team recruited
- Wellheads in stock
- Contracting strategy initiated
- Operations and cost synergies possible with other operators

## Opportunity

- Range of equity (10-40%) available, subject to offer
- Contribution expected towards Chariot's back-costs
- Competitive bids to be discriminated by:
  - Promote level on forward work program
  - Level of contribution to Chariot's back-costs
- Opportunity to participate in the drilling of a material low-risk structural prospect in an attractive emerging play
  - Benefit from the current low-cost environment
  - Basin-scale on-block potential
  - Top-tier fiscal terms
  - Neighbouring drilling and farmin activity

Country	Licence	1H 2018	2H 2018	1H 2019	2H 2019	1H 2020
NAMIBIA	Central Blocks 2312 & 2412A  65%, operator	Well Planning  Well Partnering	Drilling*  Prospect S 459mmbbls***	Drilling**  Prospect W 284mmbbls***	Post-well Evaluation	



# Chariot Oil & Gas



Prospect S, Namibia,  
Drilling Opportunity

Booth #7

Duncan Wallace, Exploration Manager  
[duncanw@chariotoilandgas.com](mailto:duncanw@chariotoilandgas.com)



Maersk Deliverer rig, used to drill Chariot's  
operated Tapir South well in Namibia in 2012