

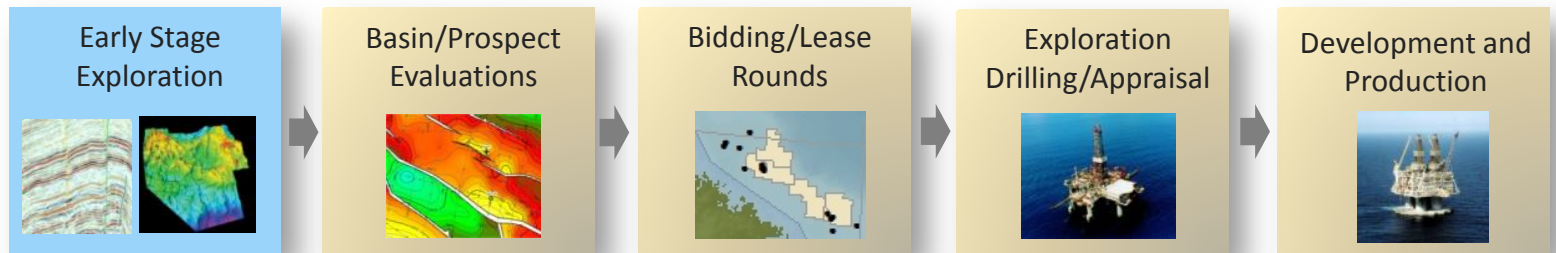
Labrador South 2017 License Round Geoscience

March 2017



Nalcor's Exploration Role

Upstream Exploration/Development Cycle

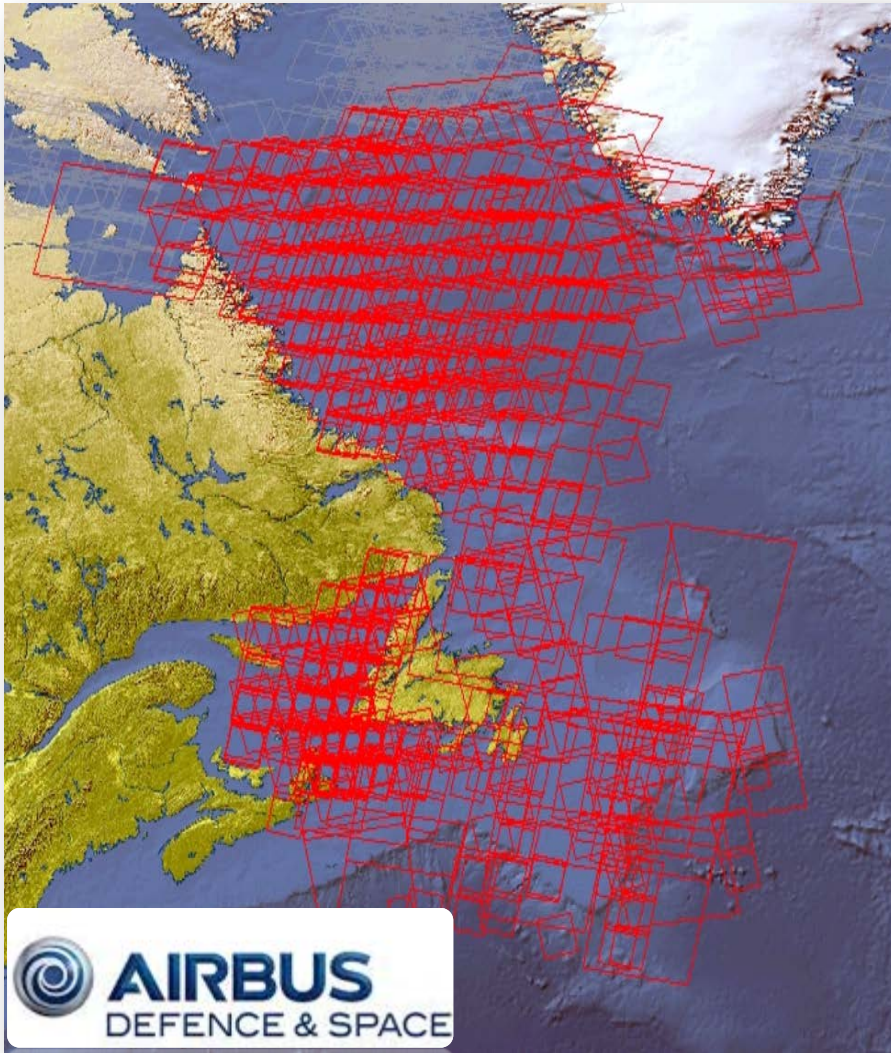


Pre-Competitive Phase

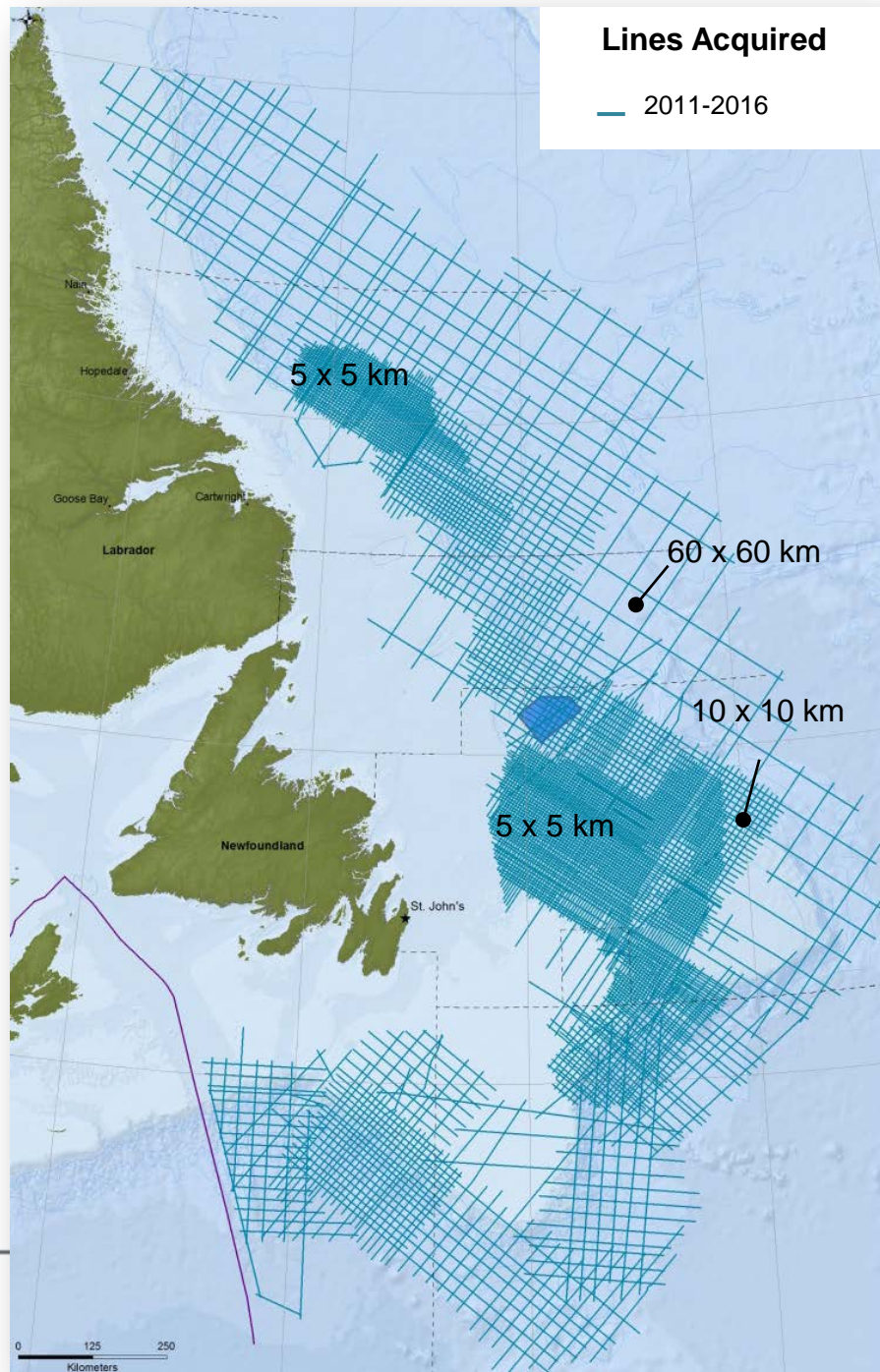


Nalcor is the State Energy Company of Newfoundland and Labrador

Nalcor – Airbus Satellite Seeps Project

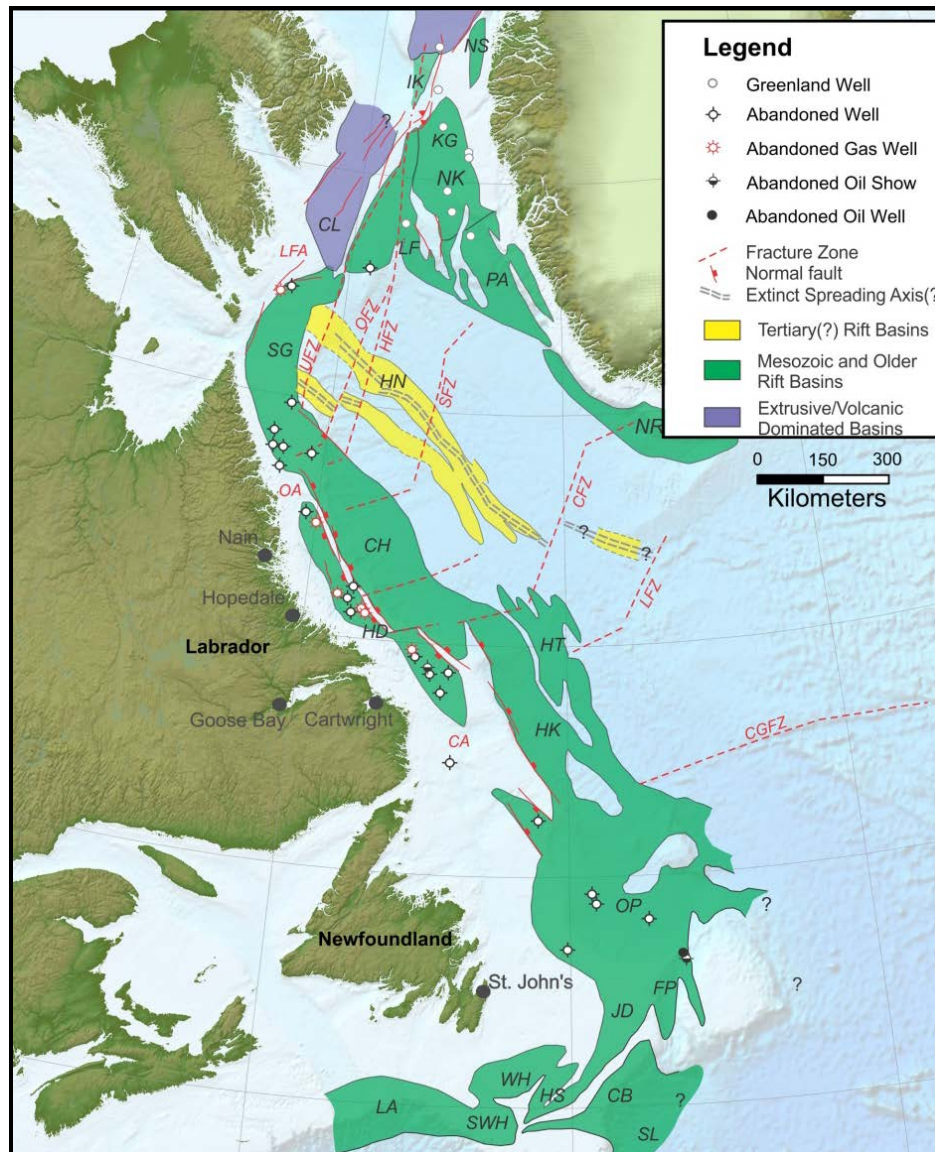


- In preparation for targeting a large scale regional 2D seismic program, Nalcor partnered with Airbus to conduct a satellite oil slick mapping project covering all of offshore Newfoundland and Labrador
- Petroleum systems in area tend to be leaky so seeps data may help find new source rocks/basins

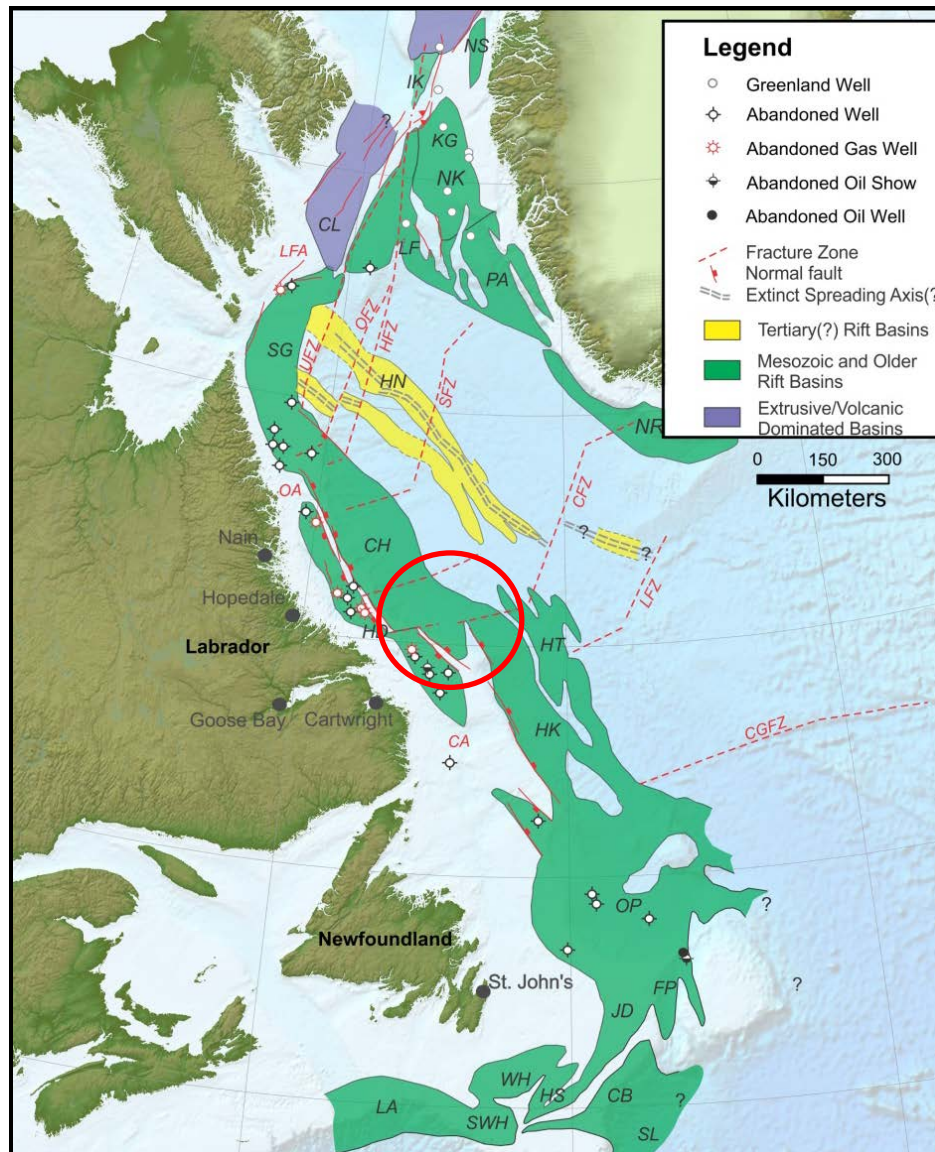


NL Seismic Investment

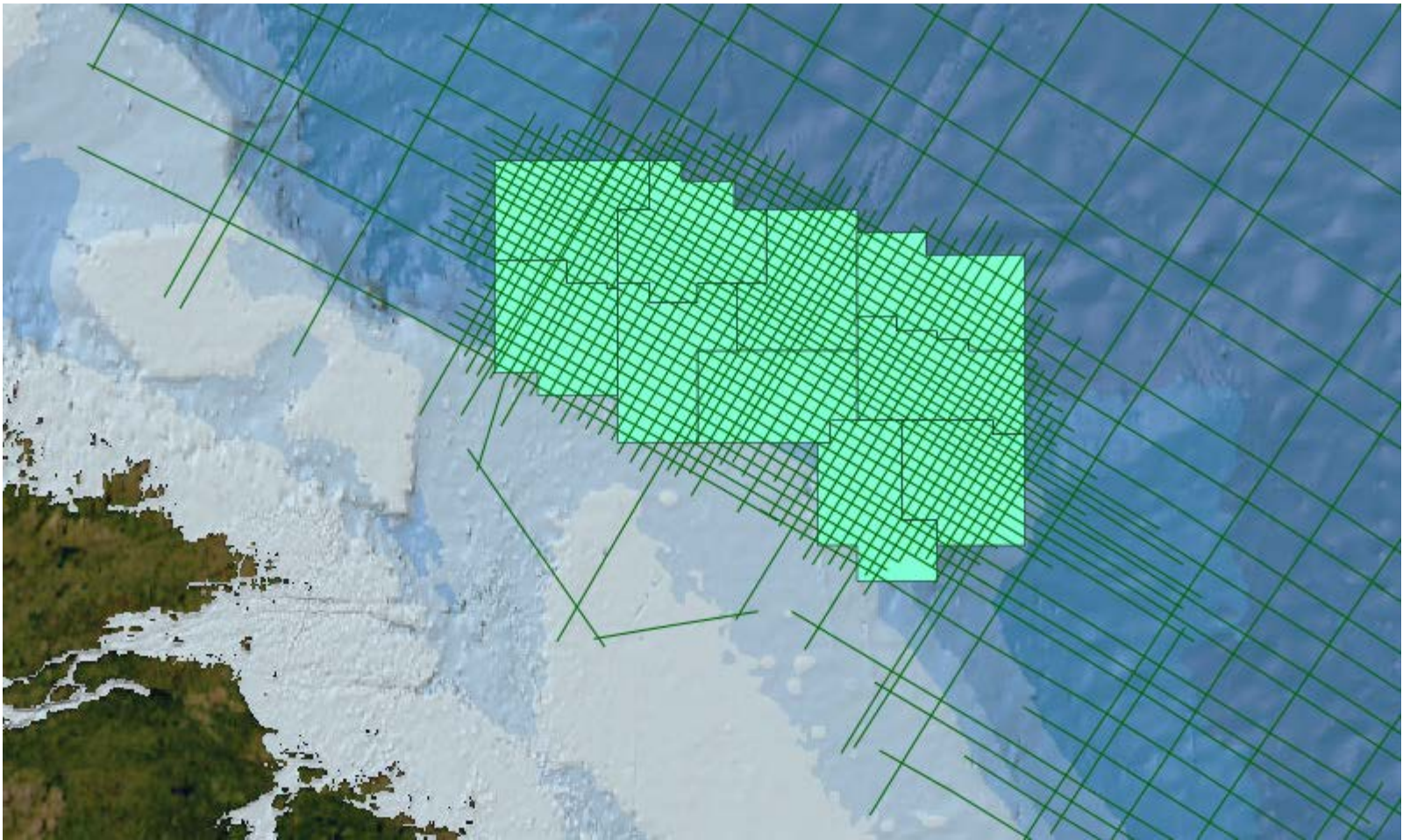
- Nalcor invested in a TGS/PGS regional 2D seismic program
- Long offset, Geostreamer acquisition
- Survey covers over 150,000 line kms (2011-2016)
- Detailed 5x5 km grid in Flemish Pass Area and Labrador South
- 10x10 km grids in upcoming license round areas
- Survey is one of the largest data programs globally



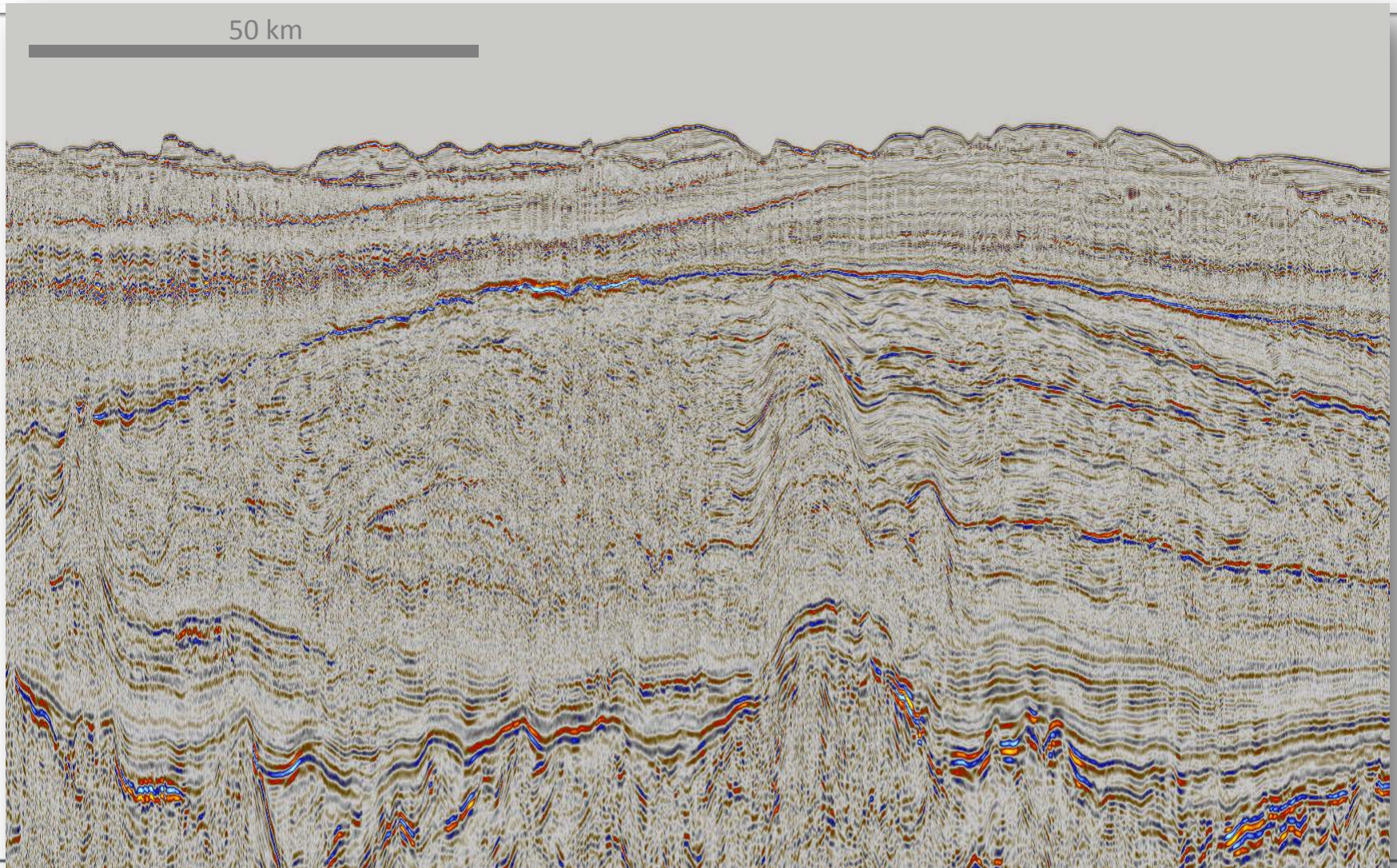
Fairway from Orphan to West Greenland (Carter et.al, 2013)



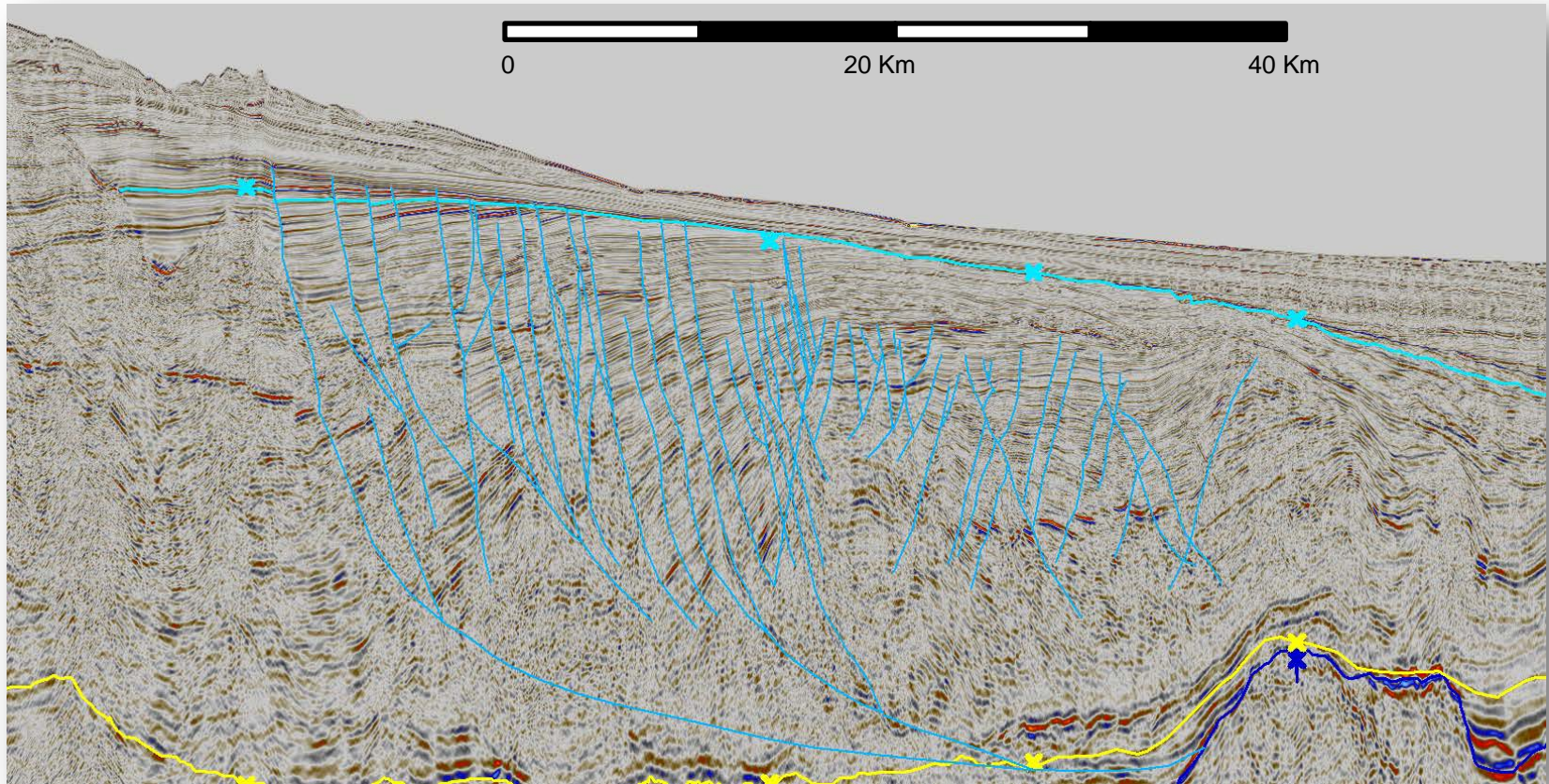
Fairway from Orphan to West Greenland (Carter et.al, 2013)



Tertiary Delta



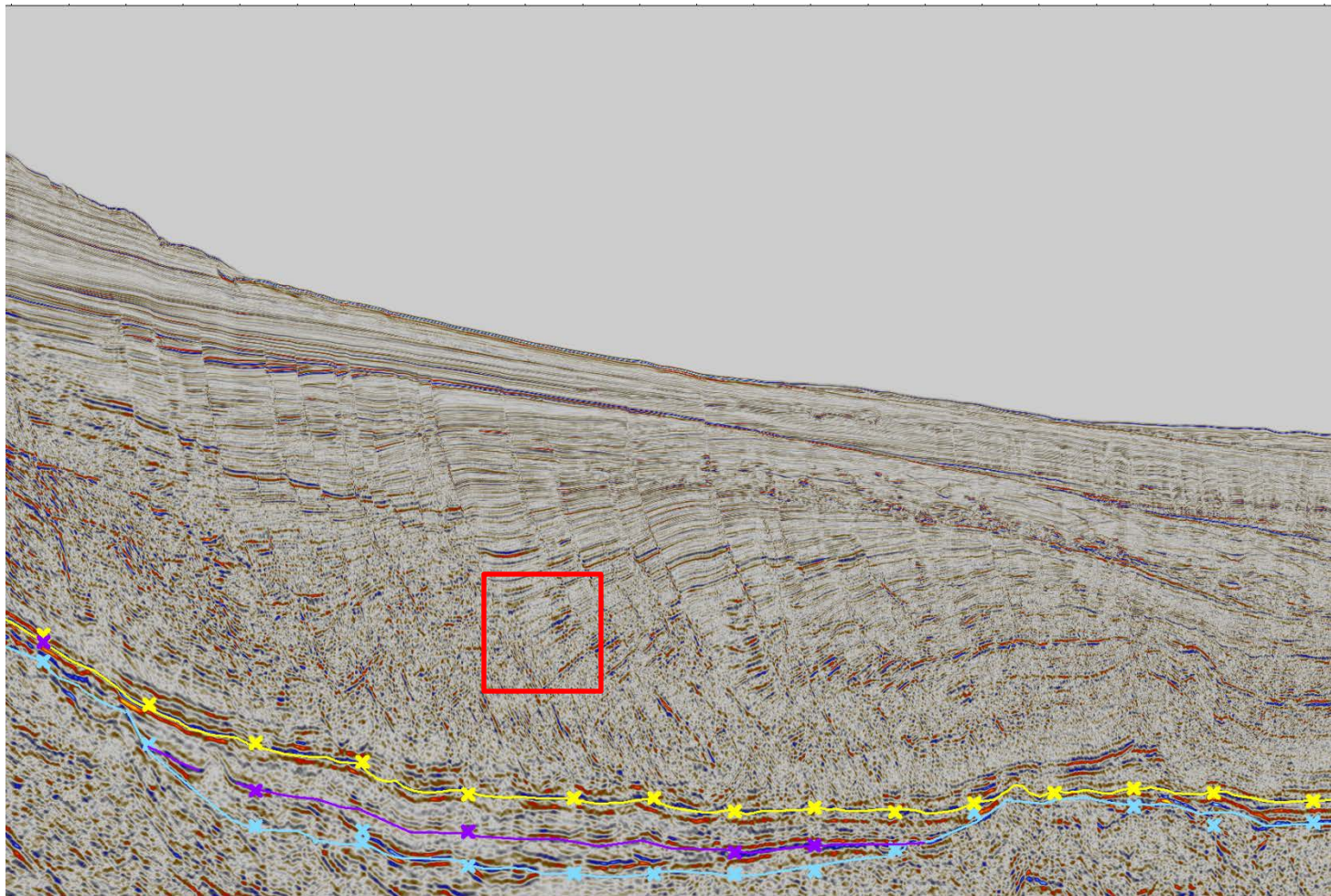
Tertiary Delta – Dip Direction



- Large dome shape structure within Tertiary fill of the Labrador South Area
- Dip Section shows abundant faulting through cross section of dome structure with tilted fault block

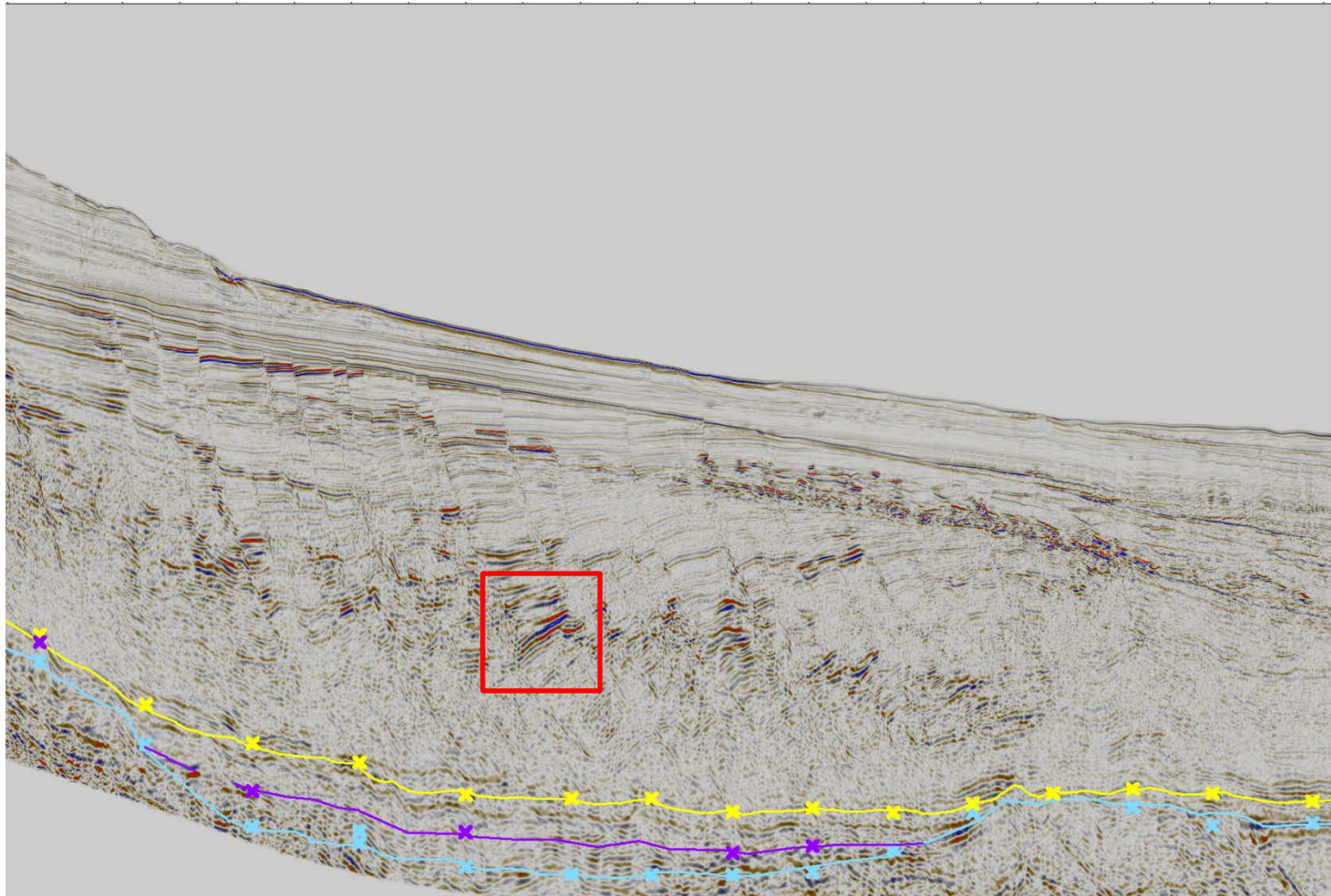
Near Angle

Far Angle



Near Angle

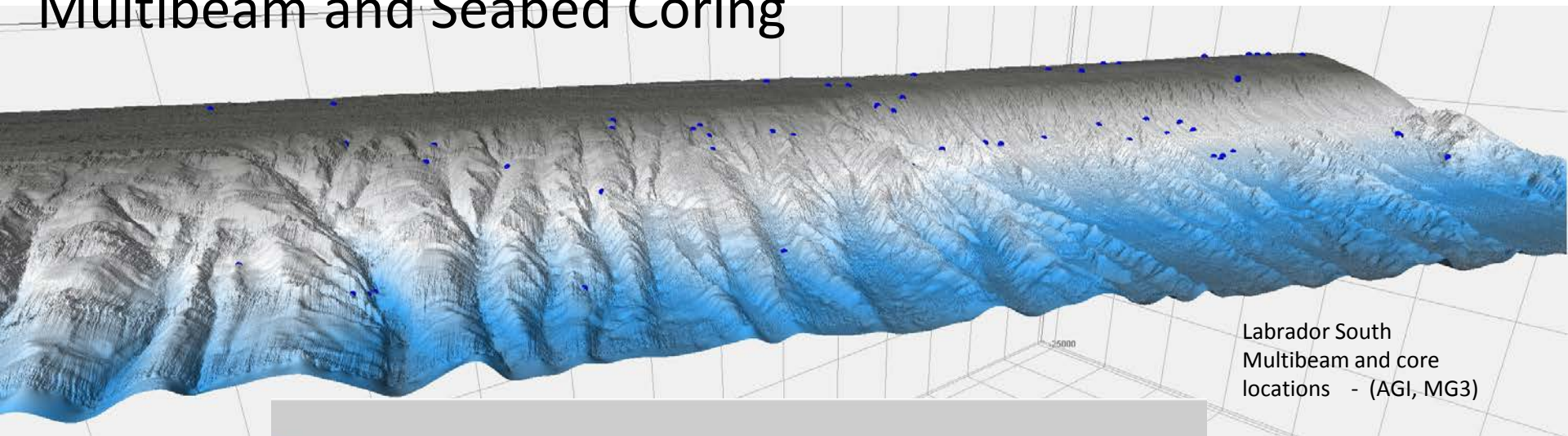
Far Angle



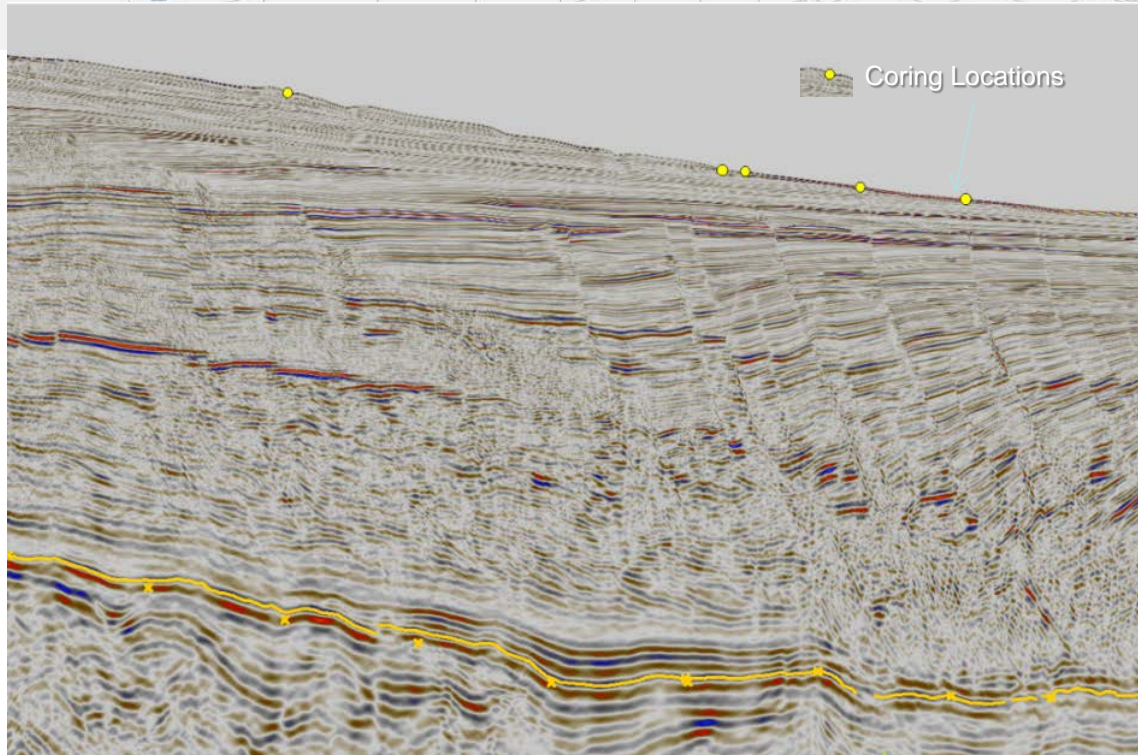
Slide with seismic redacted for distribution

Slide with seismic redacted for distribution

Multibeam and Seabed Coring



Labrador South
Multibeam and core
locations - (AGI, MG3)



Investment with
MG3 and AGI
(available
Multiclient)

Slide with seismic redacted for distribution

Slide with seismic redacted for distribution

Slide with seismic redacted for distribution

Slide with seismic redacted for distribution

Nalcor Exploration – Ongoing Studies

nalcorenergy.com/exploration

Initiative	Completion
Regional Pore Pressure	Completed
Biostratigraphic Analysis	Completed
Regional Rock Physics	Completed
Met Ocean	Completed
Drilling Study	Completed
2017 Resource Assessment	Q3 2017

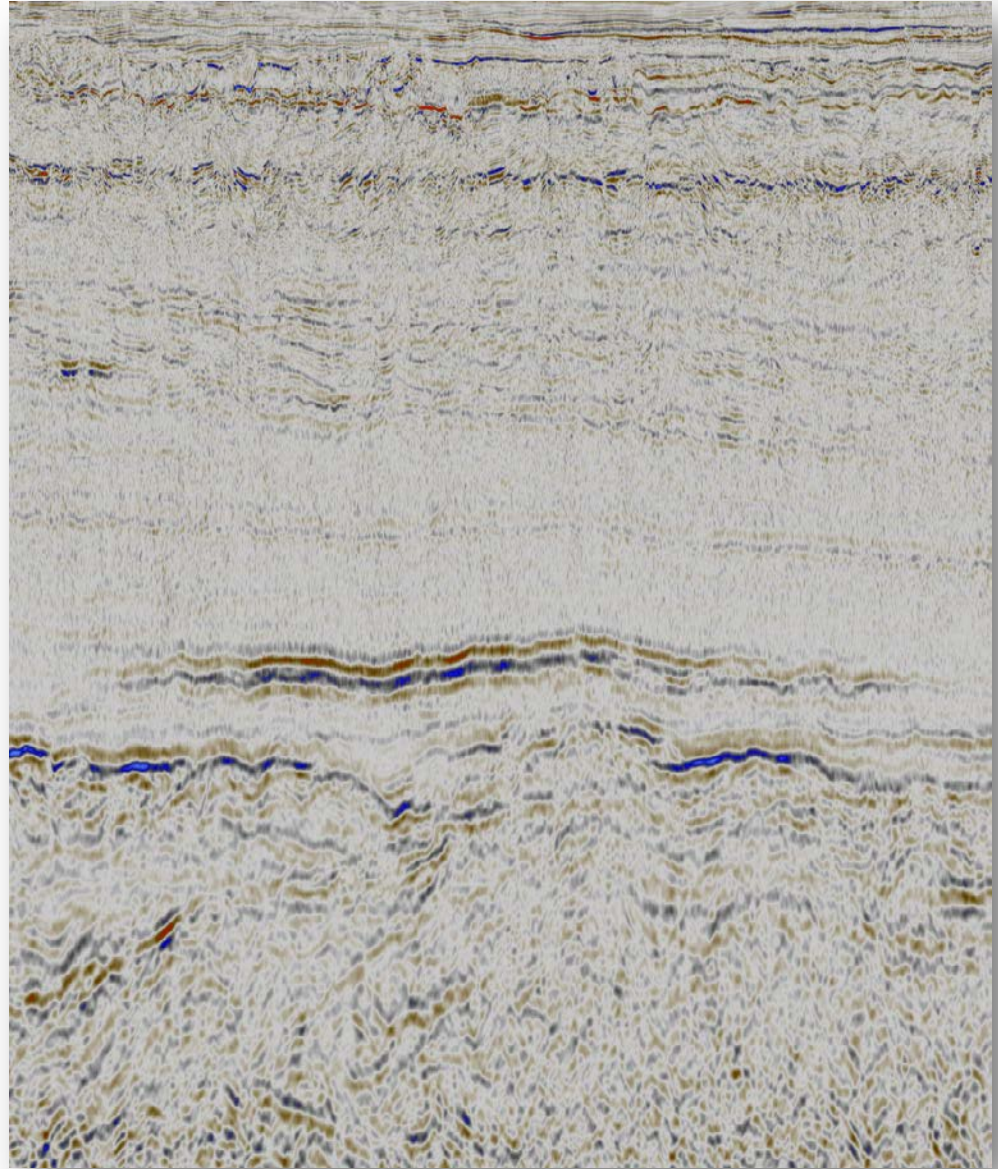


RILEY GEOSCIENCE LTD.



Summary

- Amplitude supported leads and prospects present in 2017 Labrador South License Round
- Resource Assessment (Beicip Franlab) Underway – Release Q3 2017 prior to bid close
- Early days in the understanding of NL offshore frontier resource potential



Thank you

nalcenergy.com/exploration
richardwright@nalcenergy.com

