



## Investor Presentation

February/March 2017





There are numerous uncertainties inherent in estimating reserves and resources, and in projecting future production, development expenditures, operating expenses and cash flows. Oil and gas reserve engineering and resource assessment must be recognised as a subjective process of estimating subsurface accumulations of oil and gas that cannot be measured in an exact way. These prospective resource estimates have an associated risk of discovery and risk of development. Further exploration and appraisal is required to determine the existence of a significant quantity of potentially moveable hydrocarbons.

This presentation contains forward looking statements which involve subjective judgment and analysis and are subject to significant uncertainties, risks and contingencies including those risk factors associated with the oil and gas industry, many of which are outside the control of and may be unknown to Carnarvon Petroleum Limited.

No representation, warranty or assurance, express or implied, is given or made in relation to any forward looking statement. In particular no representation, warranty or assumption, express or implied, is given in relation to any underlying assumption or that any forward looking statement will be achieved. Actual and future events may vary materially from the forward looking statements and the assumptions on which the forward looking statements were based.

Given these uncertainties, readers are cautioned not to place undue reliance on such forward looking statements, and should rely on their own independent enquiries, investigations and advice regarding information contained in this presentation. Any reliance by a reader on the information contained in this presentation is wholly at the readers own risk.

Carnarvon and its related bodies corporate and affiliates and their respective directors, partners, employees, agents and advisors disclaim any liability for any direct, indirect or consequential loss or damages suffered by a person or persons as a result of relying on any statement in, or omission from, this presentation.

Subject to any continuing obligations under applicable law or any relevant listing rules of the ASX, Carnarvon disclaims any obligation or undertaking to disseminate any updates or revisions to any forward looking statements in this presentation to reflect any change in expectations in relation to any forward looking statements or any such change in events, conditions or circumstances on which any such statements were based.

Nothing contained in this document constitutes investment, legal, tax or other advice. This document, and the information contained within it, does not take into account the investment objectives, financial situation or particular needs of any recipient. Before making an investment decision, you should consider seeking independent professional advice before seeking to take any action based on the information contained in this document.

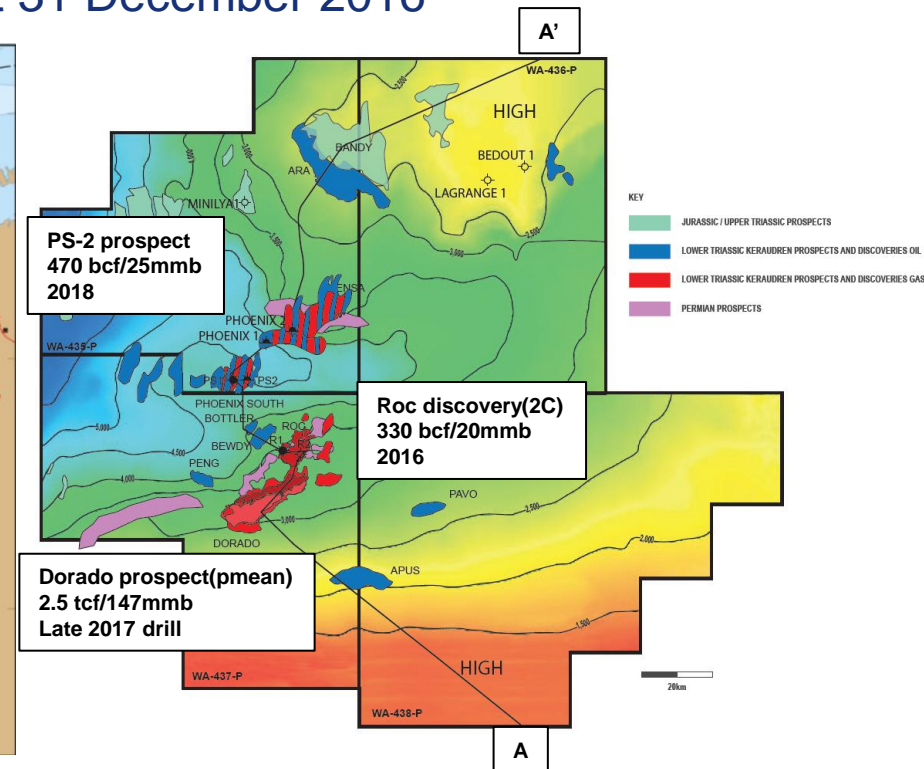
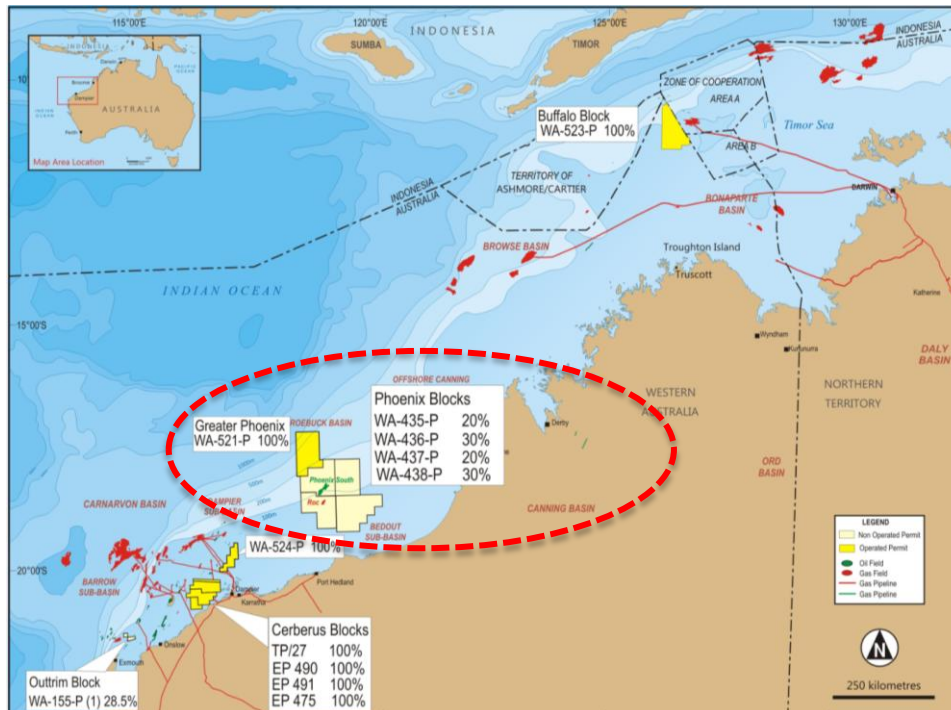
This presentation has been prepared by Carnarvon. No party other than Carnarvon has authorised or caused the issue of this document, or takes responsibility for, or makes any statements, representations or undertakings in this presentation.

# Setting the scene



## Overview

- **NEW North West Shelf (“NWS”) hydrocarbon basin uncovered**
- Play previously thought too deep / tight, now significantly de-risked
- Carnarvon provides the only ASX listed exposure to this acreage
- Market value of Carnarvon is around \$100 million (ASX code: CVN)
- Carnarvon has \$60 million of cash as at 31 December 2016

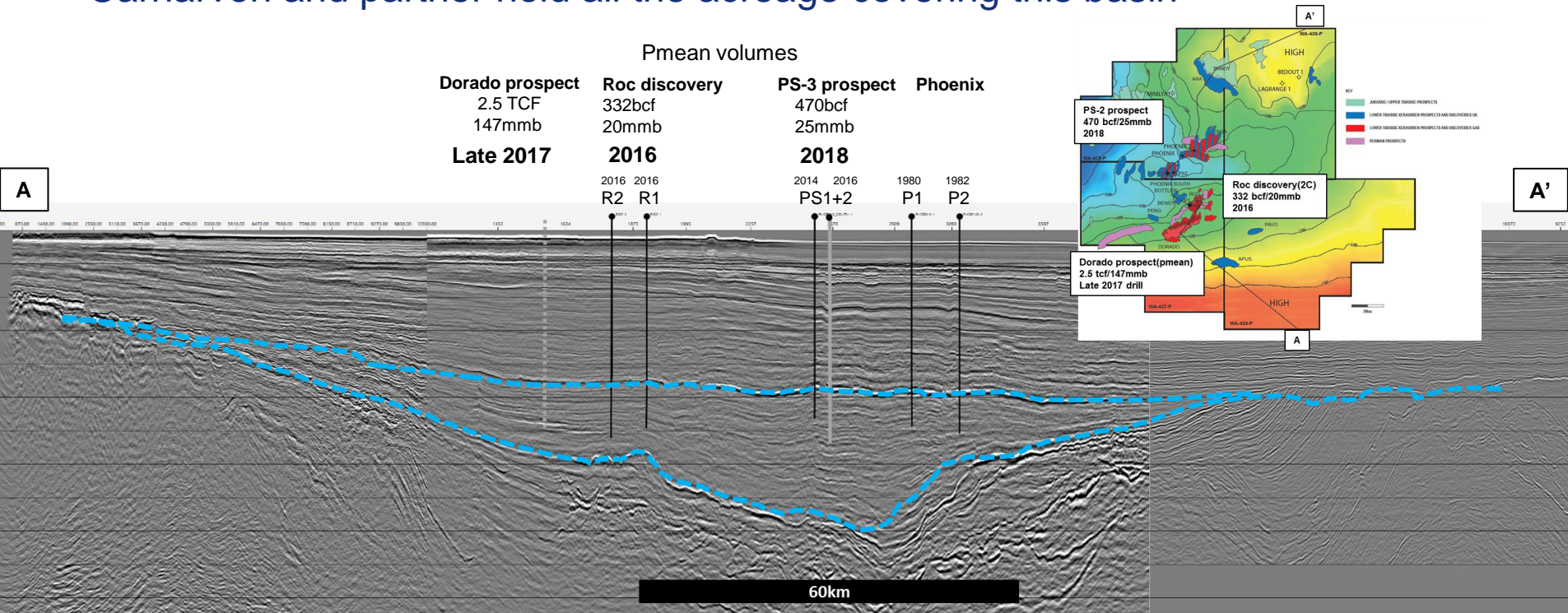


# NWS Australia most exciting exploration acreage



## Phoenix / Roc permits

- **FOUR discoveries from four wells drilled by Carnarvon and partner**
- Commercial flow rates achieved, comparable with major NWS fields
- Entire hydrocarbon province covers a very large ~22,000km<sup>2</sup>
- Carnarvon and partner hold all the acreage covering this basin



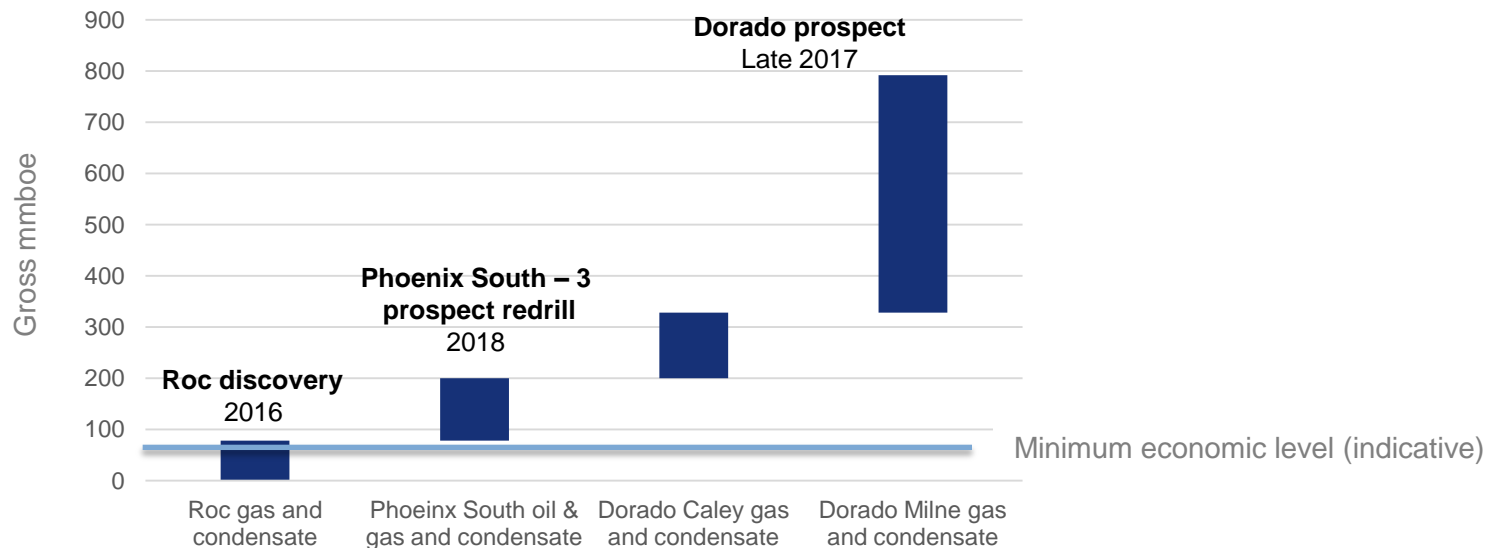
Seismic image across the Bedout Sub-basin

# Commercial project taking shape



## Phoenix / Roc permits

- **Multi-Tcf gas potential in a small tested area of the acreage**
- **Remaining area has similar high potential**
- High proportion of condensate in all gas samples recovered
- Engineering and commercial work commencing in 2017
- Key resources are capable of being centrally produced



Three key resource estimates, mid case / 2C basis<sup>1&2</sup>

1 Refer ASX announcement on 14 November 2016, resources above are gross mid case estimates. 2 Pre Phoenix South-2 result.



# Stop: how did we get to this point?



## Phoenix / Roc permit history

- 2009 Carnarvon secures interests in 4 permits in Government gazettal
- 2011 play opening 3D seismic acquired, the first 3D in the basin
- 2012 Apache Energy and JX Nippon farm in paying for two wells
- 2014 Phoenix South-1 discovered and recovered light oil
- 2015 / 2016 Roc-1 discovered and recovered gas and condensate
- 2016 Roc-2 discovered and **flowed** gas and condensate
- 2016 Phoenix South-2 discovered and recovered gas and condensate



# Roc-2 well delivered an historic flow



## Phoenix / Roc permits

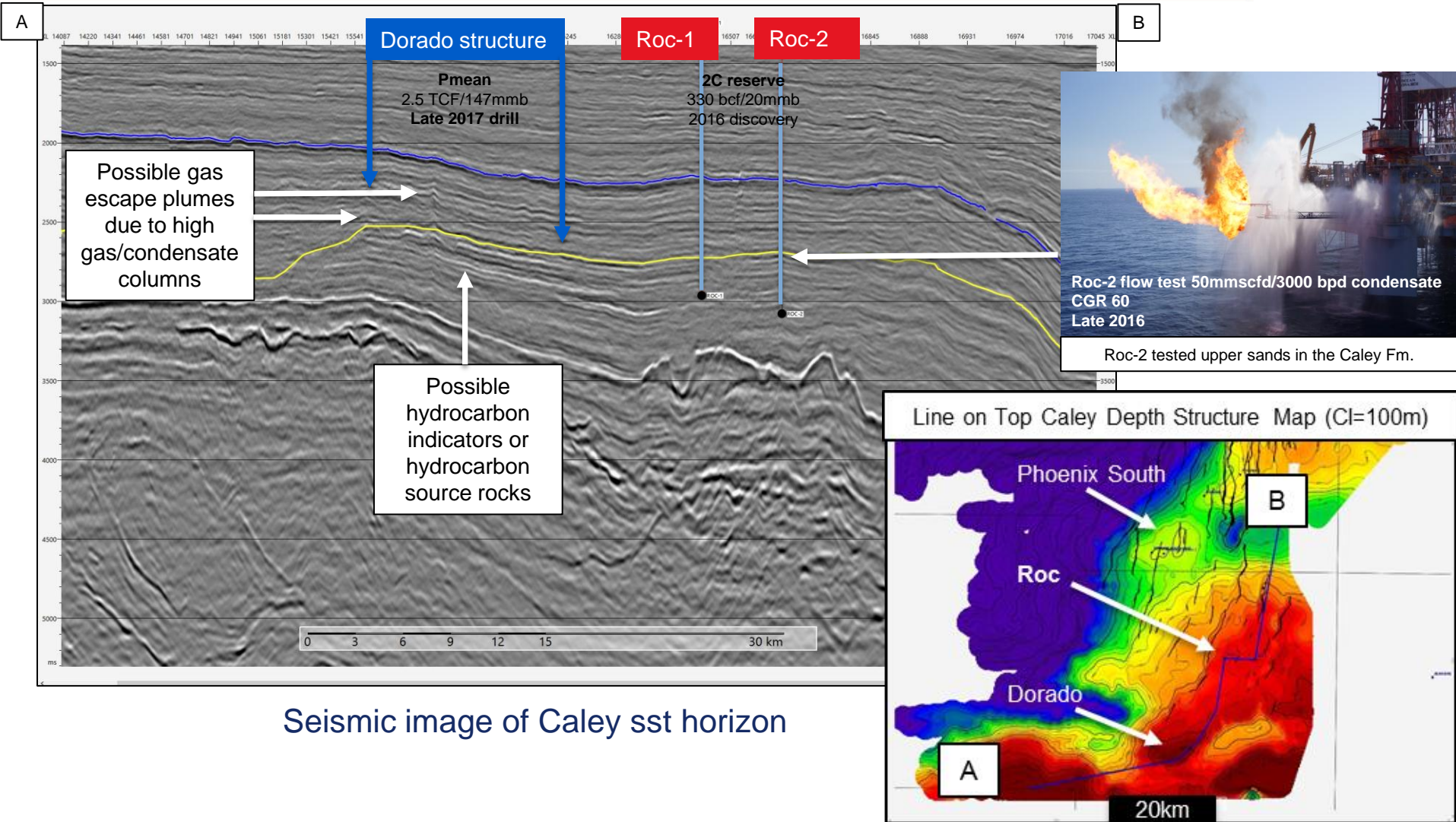
- Roc-2 well flowed strongly for 6 days under controlled test conditions
- At 51 million scf per day of gas and 2,943 barrels of condensate per day, being a high condensate to gas ratio of 58 bbls/mmscf.
- Production equivalent rate ~10% of the WA domestic gas usage



# Dorado is the biggest target yet – updip of Roc



## Phoenix / Roc permits





# Phoenix South-2 potentially uncovered a play fairway



## Phoenix / Roc permits

- High gas influx and pressures experienced while drilling PS-2 Caley Sst
- Pressure positive for porosity (higher volume) and permeability (higher flow rates)
- High probability of sand prone reservoirs from seismic and regional mapping
- Potential for multiple sealed sand packages filled with hydrocarbons generated from shales within the package; versus structural trap targeted pre-drill

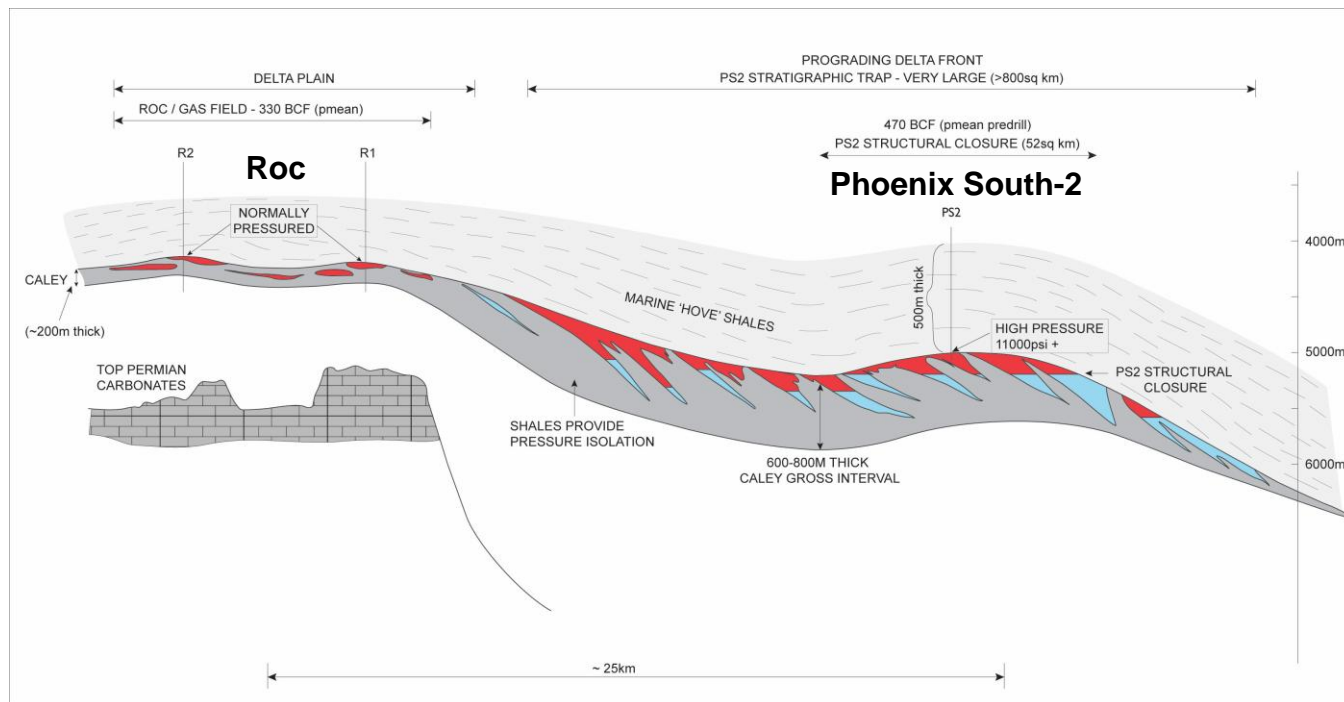


Illustration of Phoenix South-2 overpressured gas play

# Location strategically important



## Phoenix / Roc commercialisation

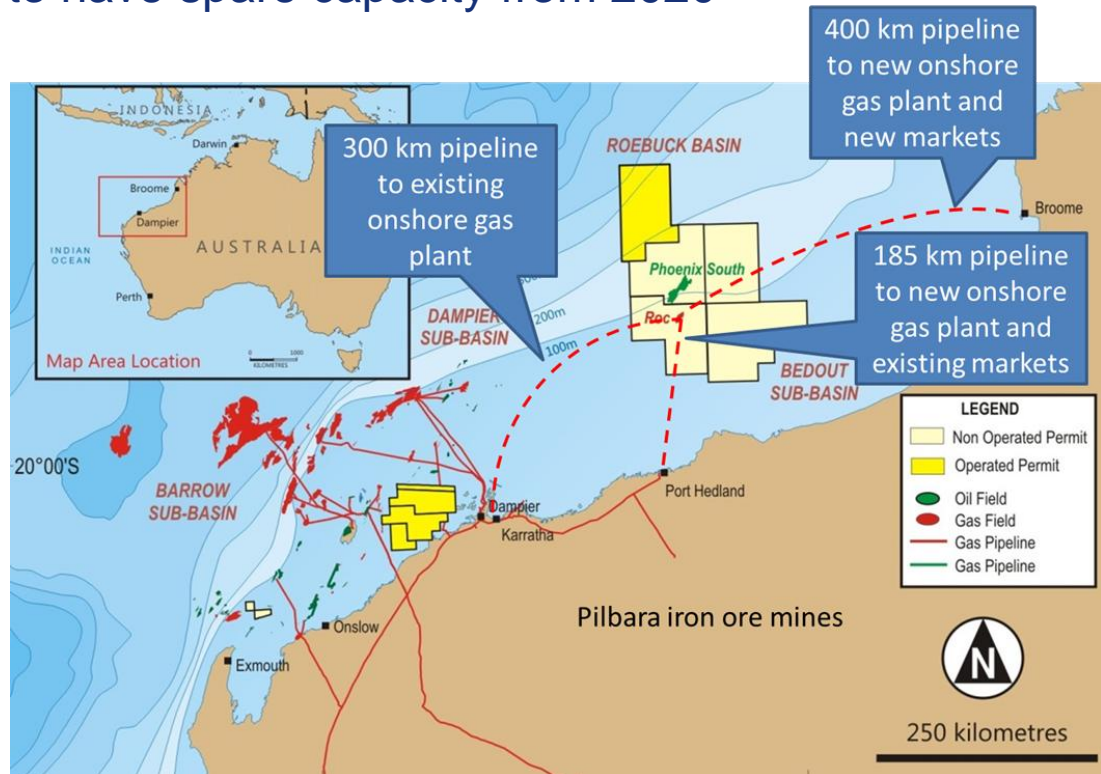
- Phoenix and Roc discoveries lie ~160 kilometres offshore of Port Hedland
- WA's main gas pipeline passes Port Hedland – domestic supply shortage from 2020
- Fortescue River Gas Pipeline links main gas pipeline to Pilbara iron ore mines
- LNG export facilities expected to have spare capacity from 2020

LNG export

Domestic Gas  
pipeline

Gas for mining

Government take – 60%



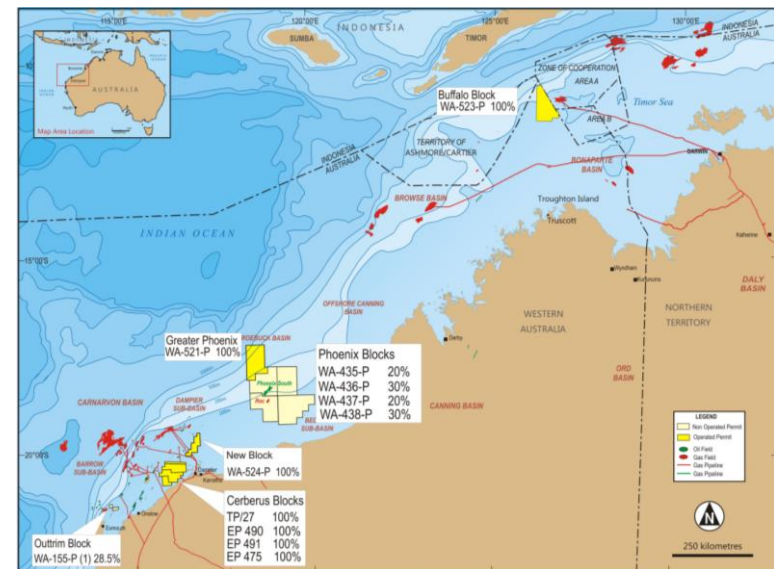
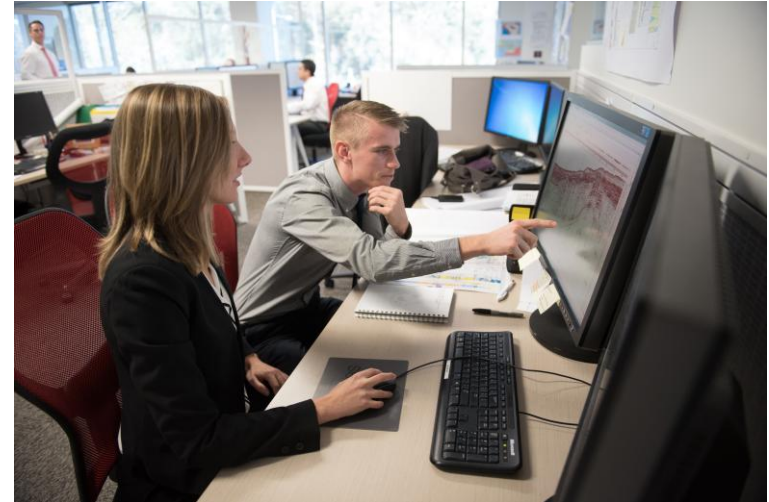
# Keep the conveyor belt full



CVN's business model – create shareholder value through farmout exploration

## Acquired acreage in the oil low 2014-2017

- Buffalo – running latest FWI 3D reprocessing
- Maracas – running latest FWI 3D reprocessing
- WA-521 – large leads identified on 2D next to Phoenix
- Cerberus – Phoenix / Roc like plays drill ready
- Outtrim – 2016 oil discovery and aggregation oil play



## Where we see value

- Volume update(s) following Phoenix South well result and ongoing prospect work
- Dorado well targeting large volumes in late 2017 (subject to JV approvals)
- Field development planning for Phoenix / Roc including project economics
- Commercial transactions such as divestments, farm-outs and acquisitions



2016 Roc-2 flow test







**Think Different**

**Act Different**