



# **Farm-Out Opportunities**

## **Colombia – Llanos and Putumayo Basins**



**Gulfsands Petroleum PLC**  
**6 Duke Street St. James**  
**London SW1Y 6BN**  
**T +44 (0) 20 7024 2135**  
**F +44 (0) 20 7024 2131**  
**[ian.conway@gulfsands.com](mailto:ian.conway@gulfsands.com)**



# Disclaimer

**This Document is protected by international copyright laws and is for the recipient's use only. This Document and any related materials are confidential and may not be distributed or reproduced (in whole or in part) in any form.**

**By accepting or accessing this Document or any related materials you agree to be bound by the limitations and conditions set out herein and, in particular, will be taken to have represented, warranted and undertaken that you have read and agree to comply with the contents of this disclaimer including, without limitation, the obligation to keep information contained in this Document and any related materials confidential.**

**Under no circumstances should the information provided in this Document or any other written or oral information made available in connection with it be considered as investment advice, or as a sufficient basis on which to make investment decisions. This Document is being provided to you for information purposes only.**

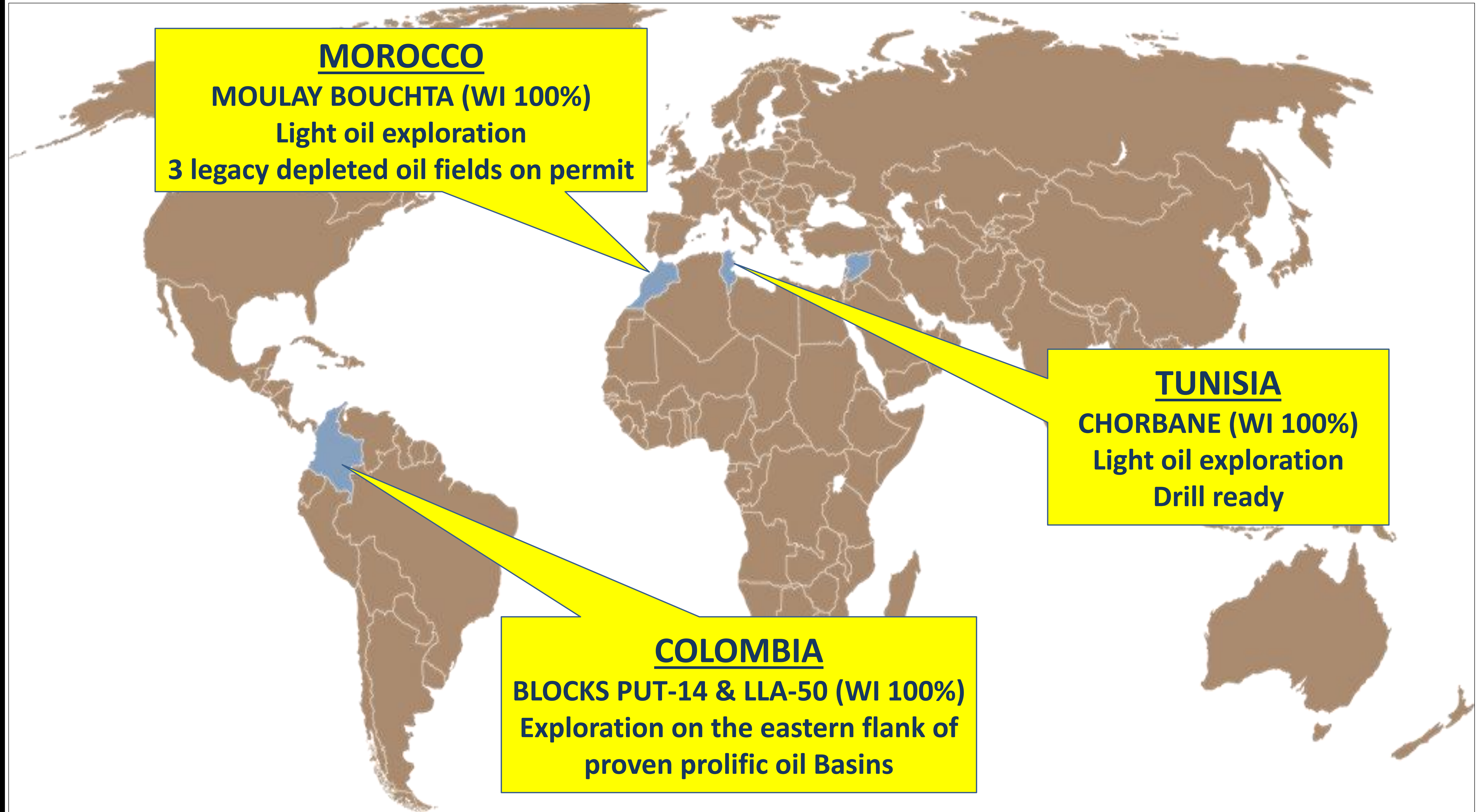
**The distribution of this Document or any information contained in it and any related materials may be restricted by law in certain jurisdictions and any person in to whose possession this Document or any part of it comes should inform themselves about, and observe, any such restrictions.**

**The information in this Document does not purport to be comprehensive and has not been independently verified. No reliance may be placed for any purposes whatsoever on the information contained in this Document or related materials or in the completeness of such information. All statements of opinion and/or belief contained in this Document and all views expressed and all projections, forecasts or statements regarding future events or possible future performance represent the relevant person's own assessment and interpretation of information available to it as at the date of this Document.**

**This Document and any related materials may include certain forward-looking statements, beliefs or opinions. By their nature, forward-looking statements involve risk and uncertainty because they relate to events and depend on circumstances that will occur in the future. There can be no assurance that any of the results and events contemplated by the forward-looking statements contained in the information can be achieved or will, in fact, occur. No representation is made or any assurance, undertaking or indemnity given to you that such forward looking statements are correct or that they can be achieved. Past performance cannot be relied on as a guide to future performance.**



# Gulfsands Petroleum – Onshore Exploration Assets for Farm-out





# Putumayo Block 14

# Tax/Royalty Onshore Colombia

## Oil Exploration on Eastern Flank of Proven Prolific Basin

Gulfsands Operator, WI 100%

Permit area ~464 km<sup>2</sup> awarded Ronda 2012

Good Fiscal Terms with “X Factor” of 5%

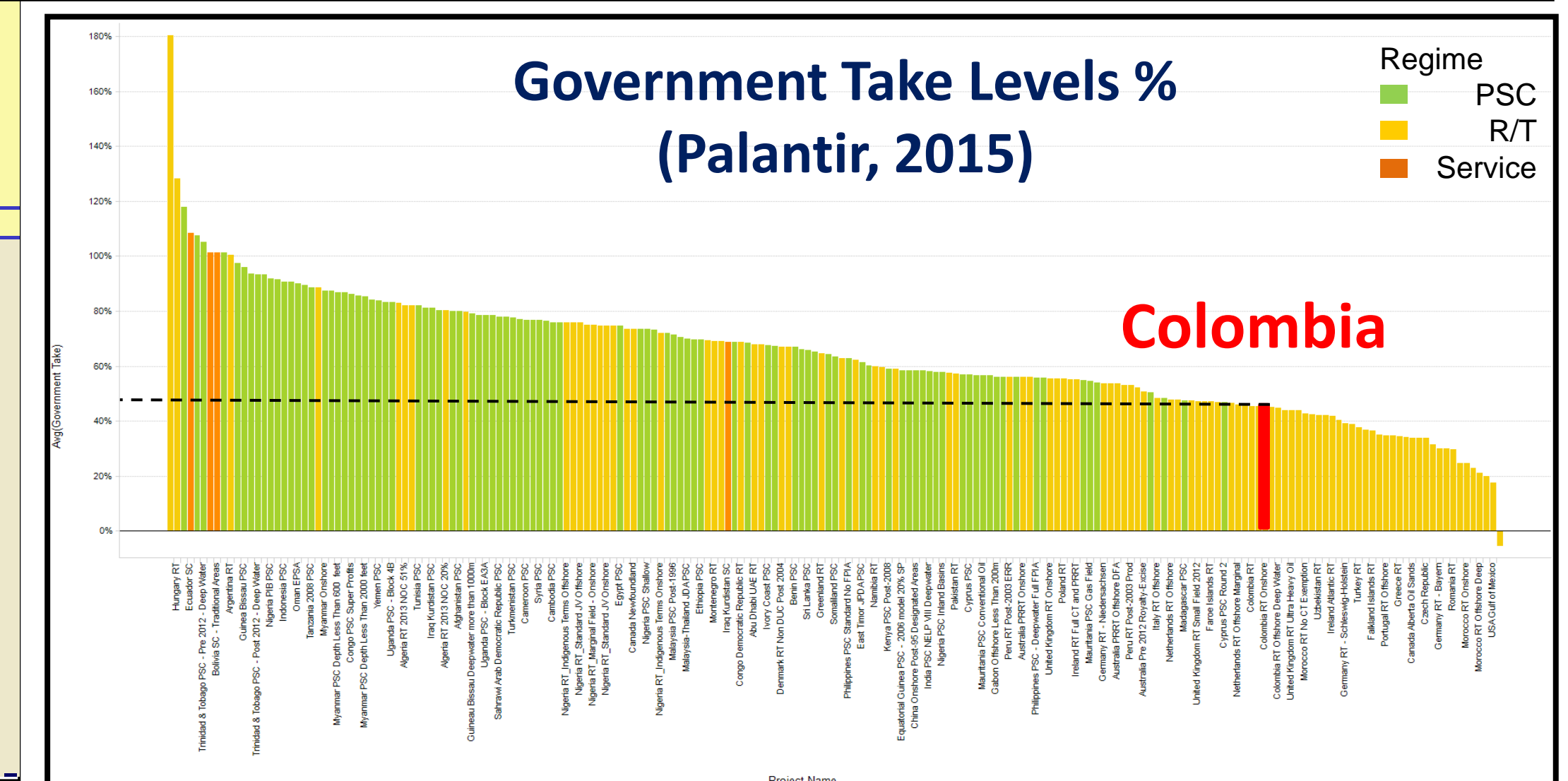
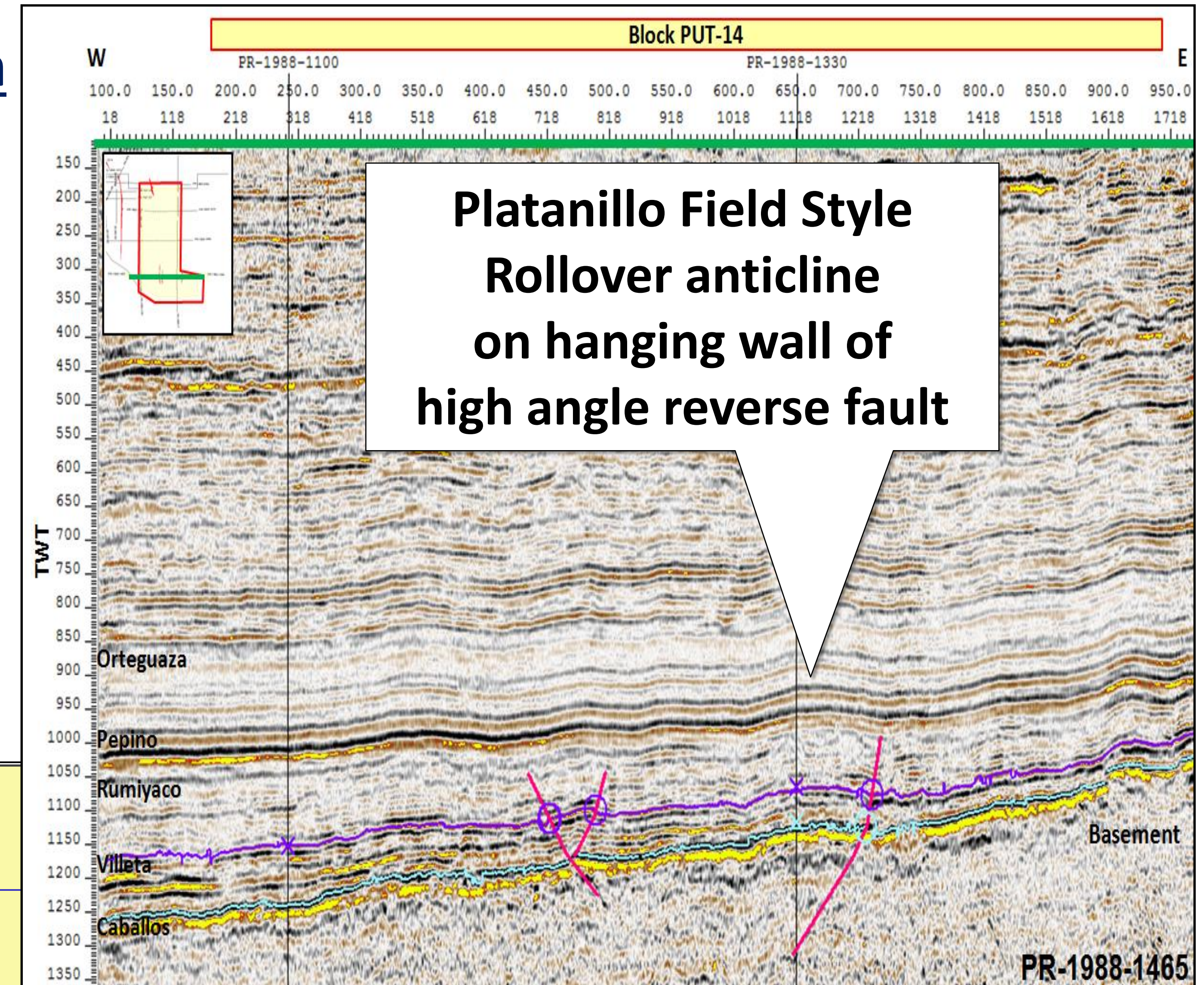
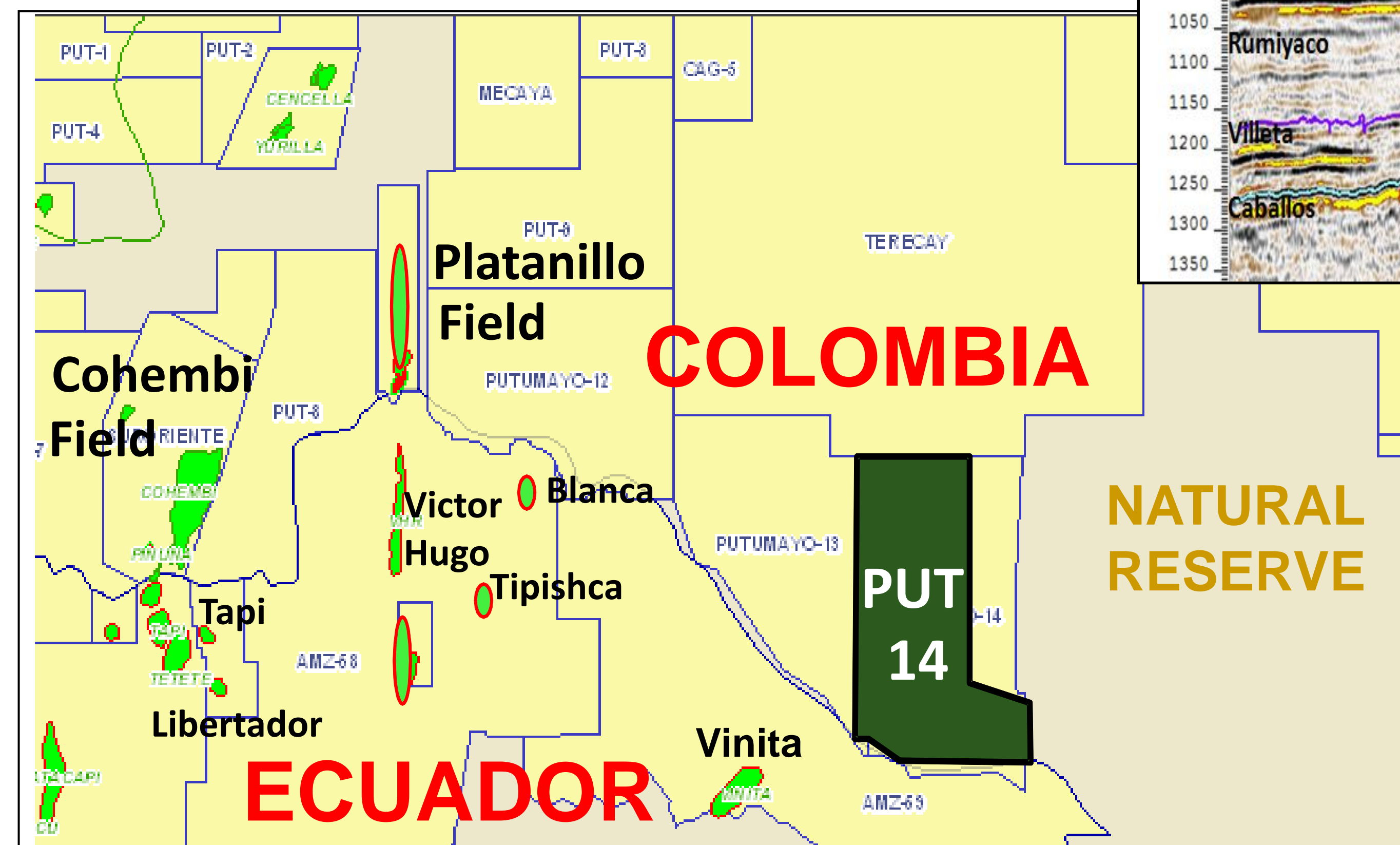
- Located in the eastern (up dip) part of the Putumayo Basin
- On trend with oilfields of Ecuador’s Oriente Basin to south
- Prospective in Cretaceous aged Villeta and Caballos sands
- Faulted structural and sub-crop/pinch-out trapping potential
- Legacy seismic on Block identifies structures analogous to large oil fields to the west (e.g. Platanillo)

### Work Programme:

- 1 exploration well
- 93 km 2D seismic

License Term to November 2017

Time extensions may be possible via discussion with ANH





# Llanos Block 50

# Tax/Royalty Onshore Colombia

## Mature Oil Exploration in a Proven Basin

Gulfsands Operator, WI 100%

Permit area ~514 km<sup>2</sup> awarded Ronda 2012

Good Fiscal Terms with “X Factor” of 6%

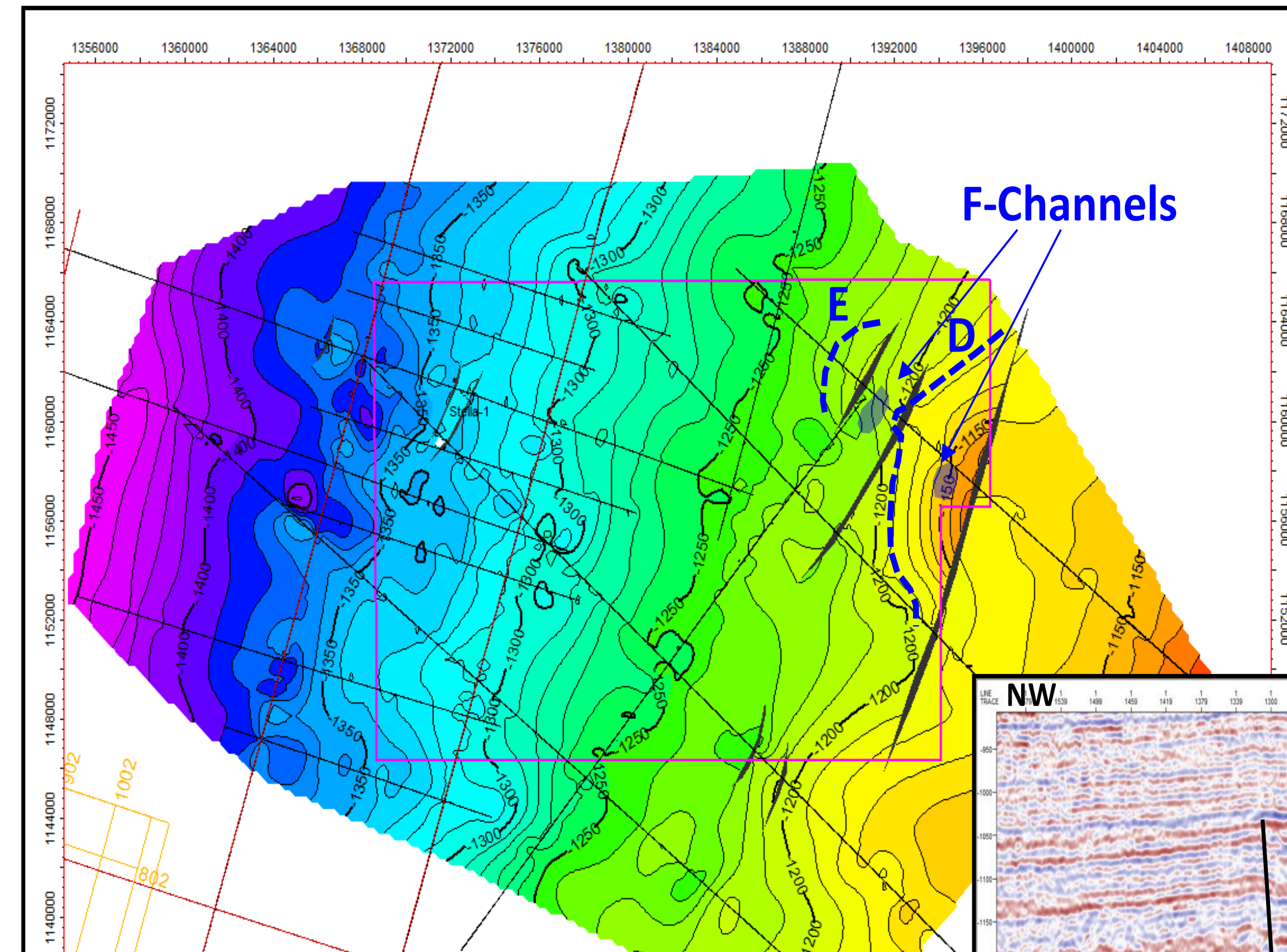
- Block on trend to oil fields circa 30 km to south
- Prospective in Paleogene and Cretaceous sands
- Faulted traps and stratigraphic trapping potential within channelised reservoir systems
- Leads identified on existing seismic can become drillable prospects with short 2D campaign

## Work Programme:

- 1 exploration well
- 103 km 2D seismic

License Term to November 2016

Time extensions may be possible via discussion with ANH



### Lead D:

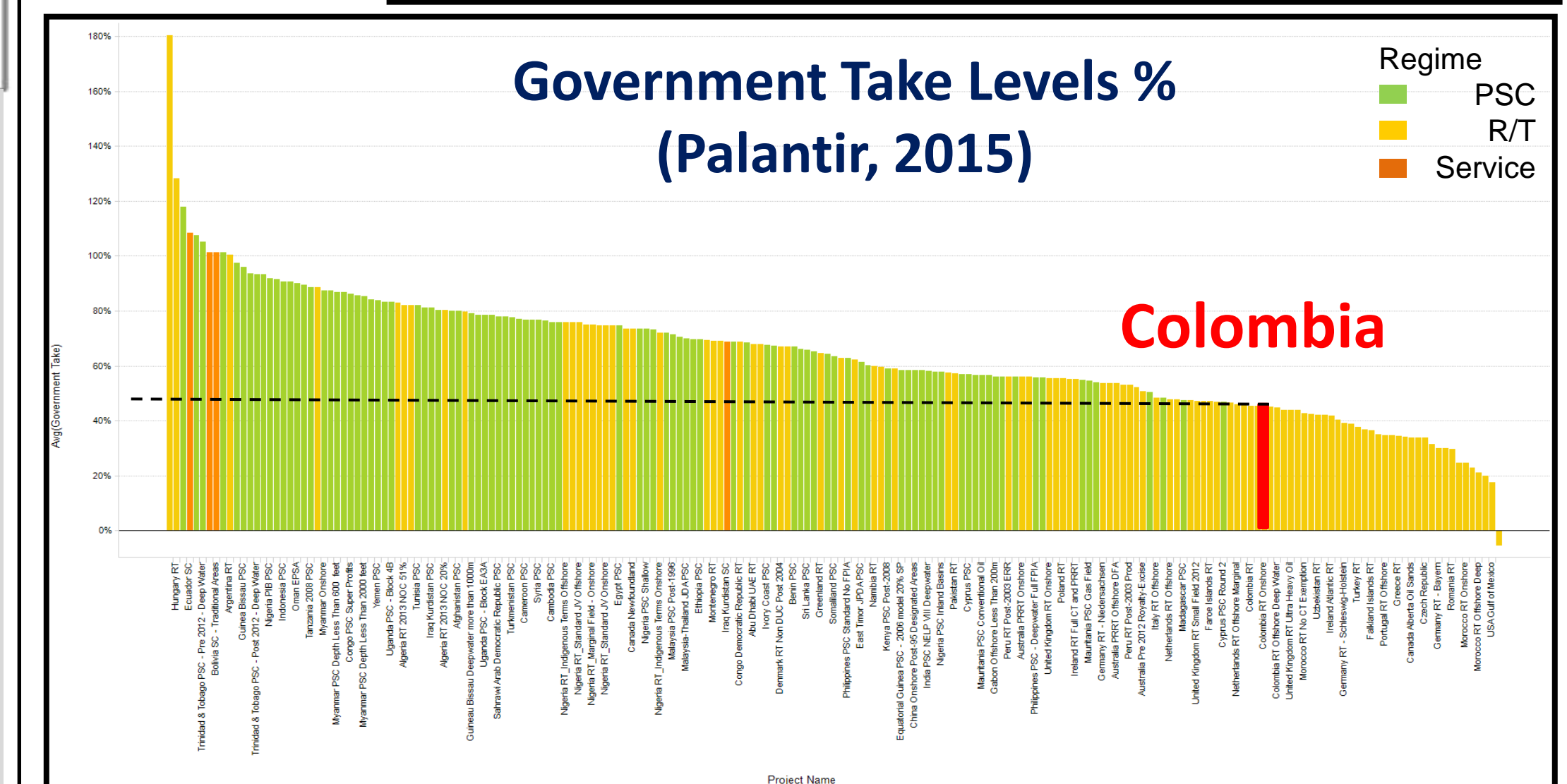
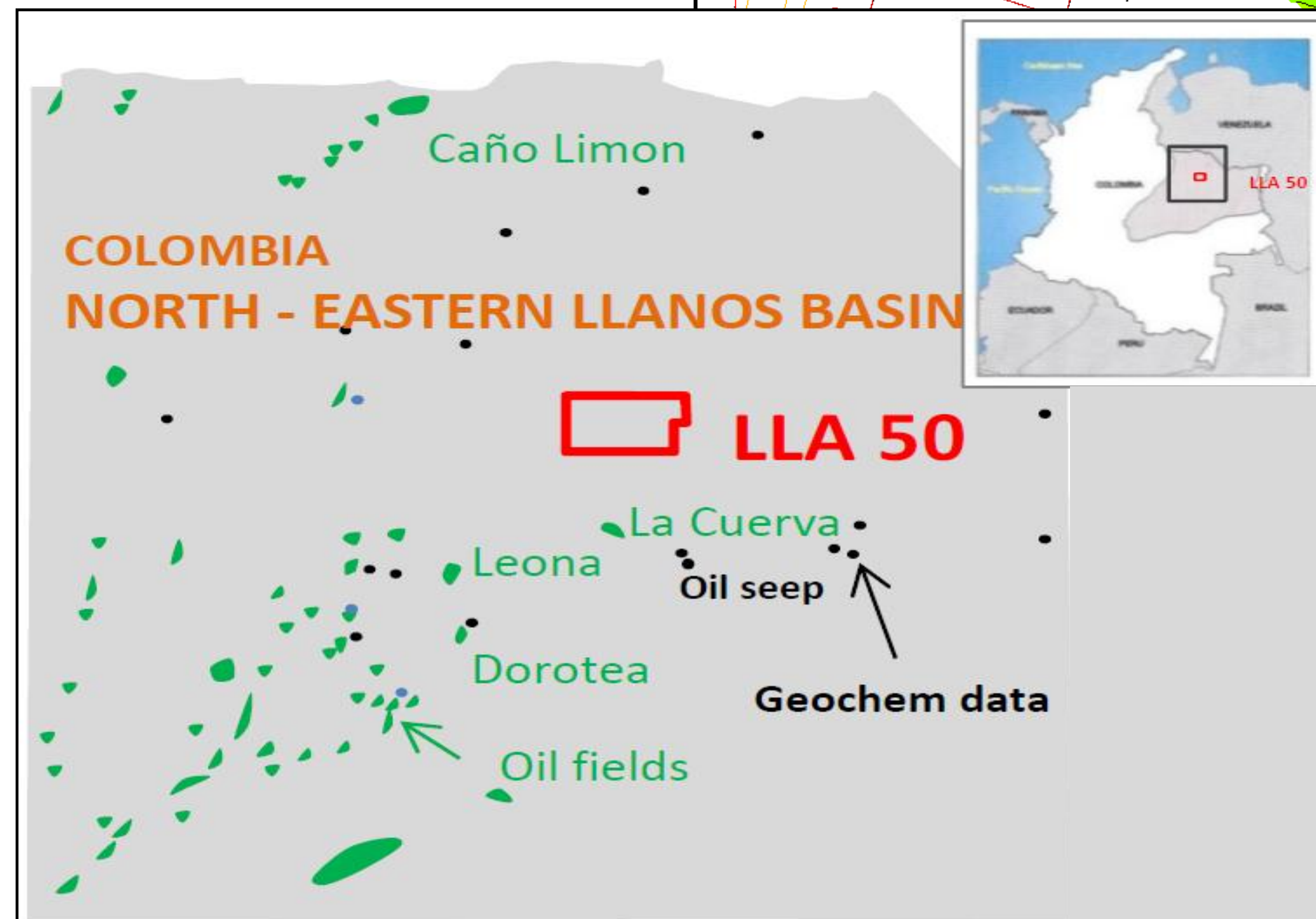
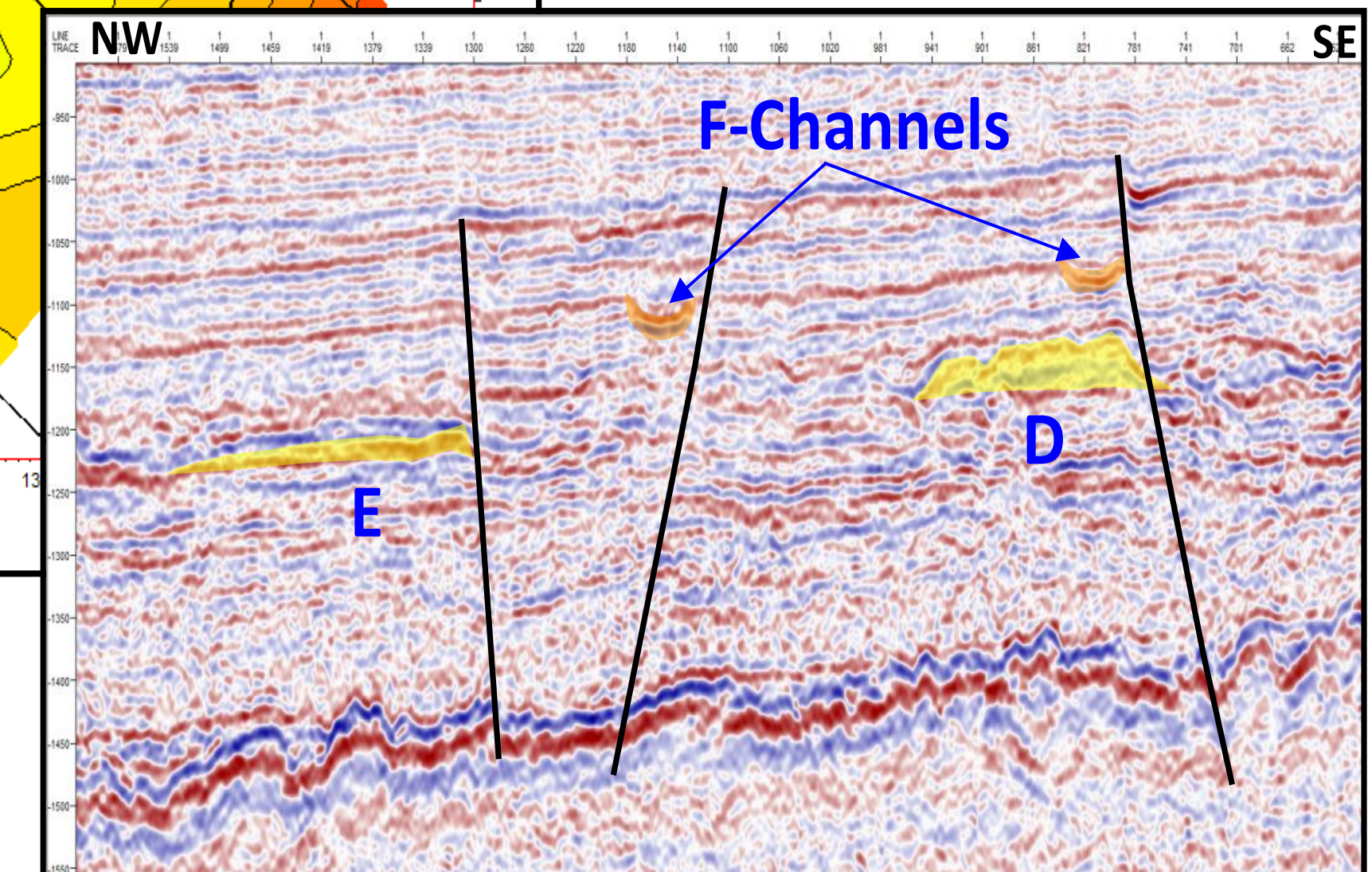
Mirador level  
~ 25 sqkm

### Lead E:

Mirador level  
~ 4 sqkm

### Lead F: Channels

Carbonera C3 level  
~ 530m wide





# Chorbane Permit

# PSC Onshore Tunisia

## Drill Ready Light Oil Opportunity

Mature exploration in a proven regional play in the Pelagian Basin

Gulfsands Operator, 100% WI

Net Prospective Resource

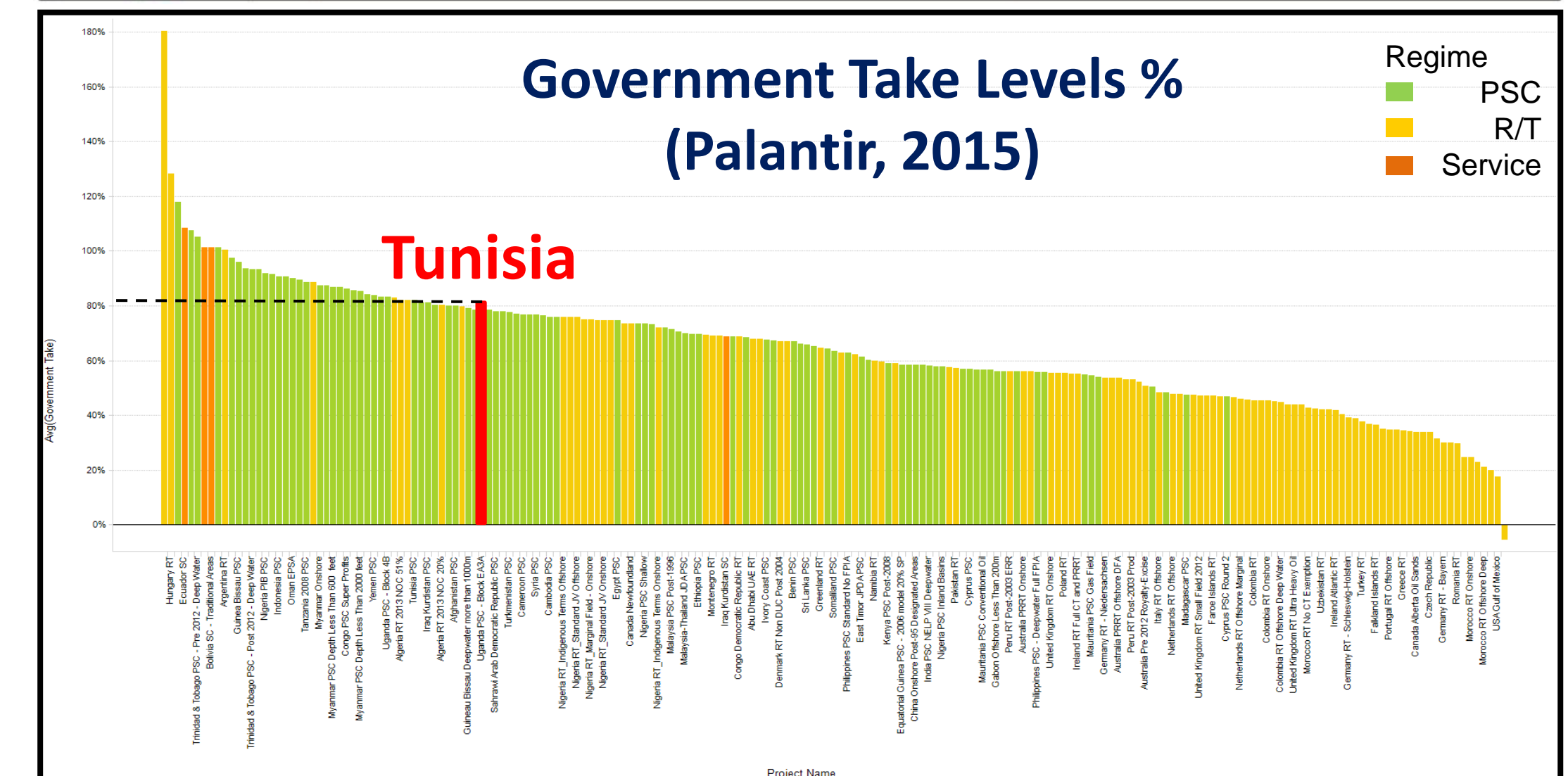
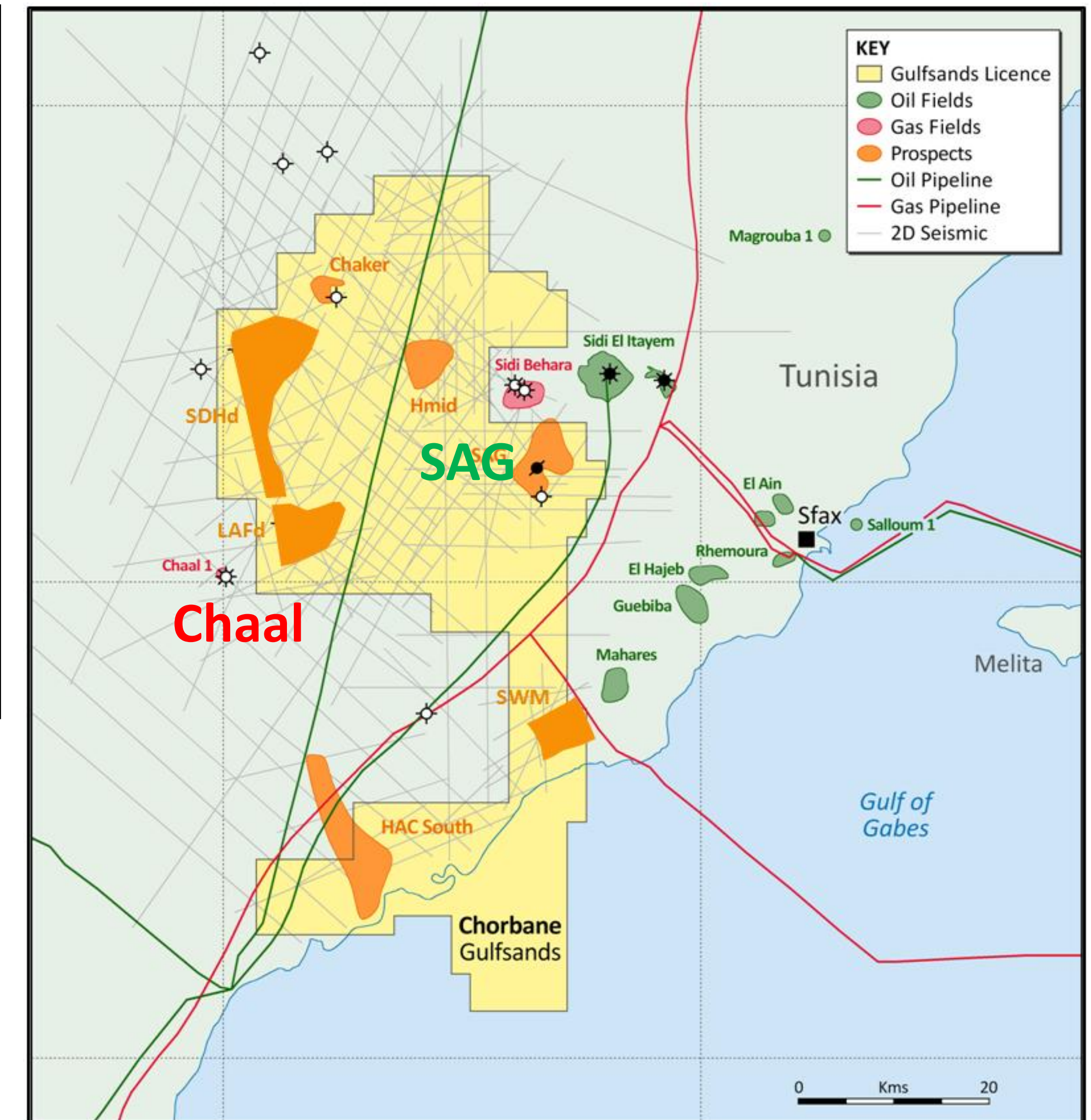
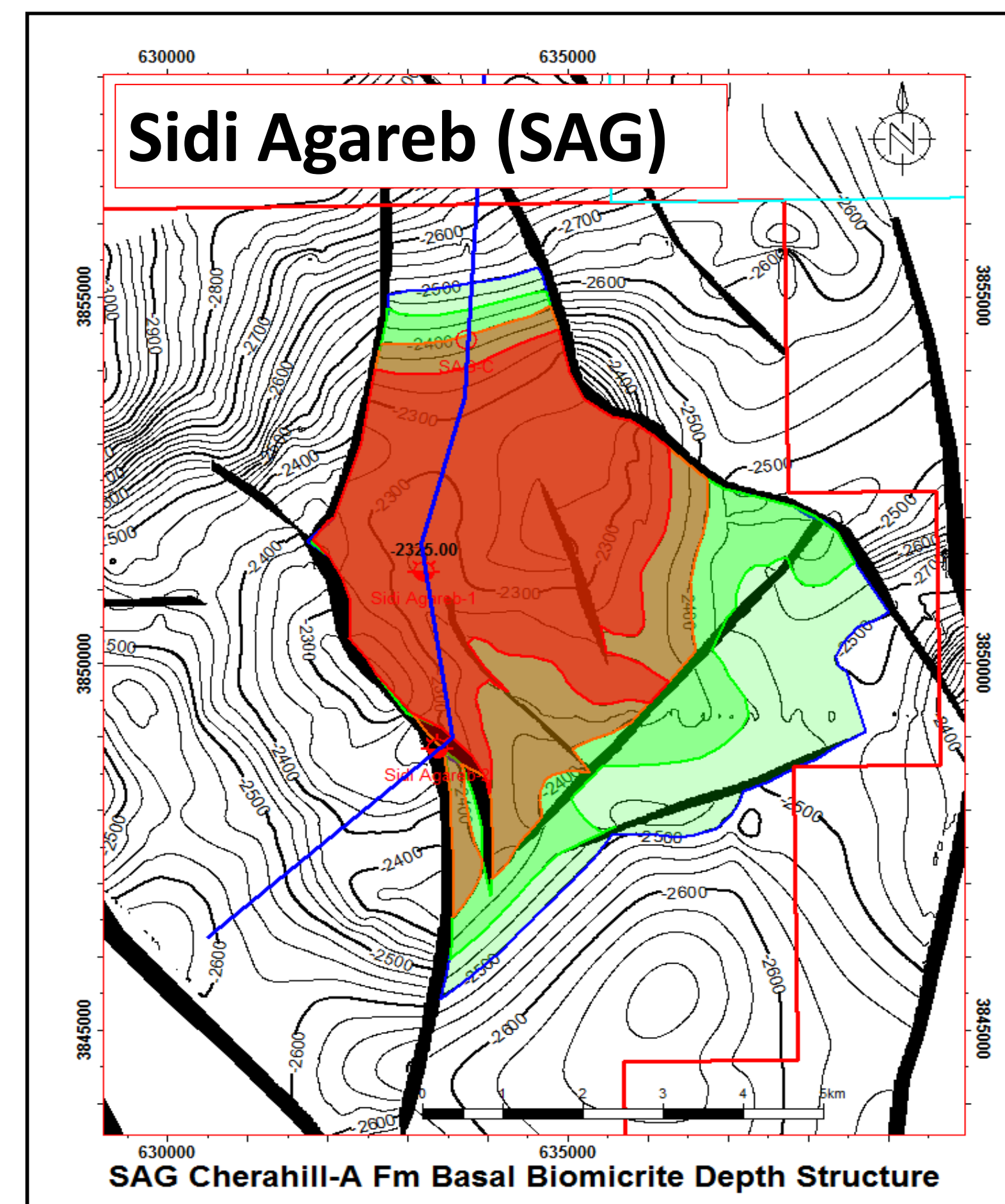
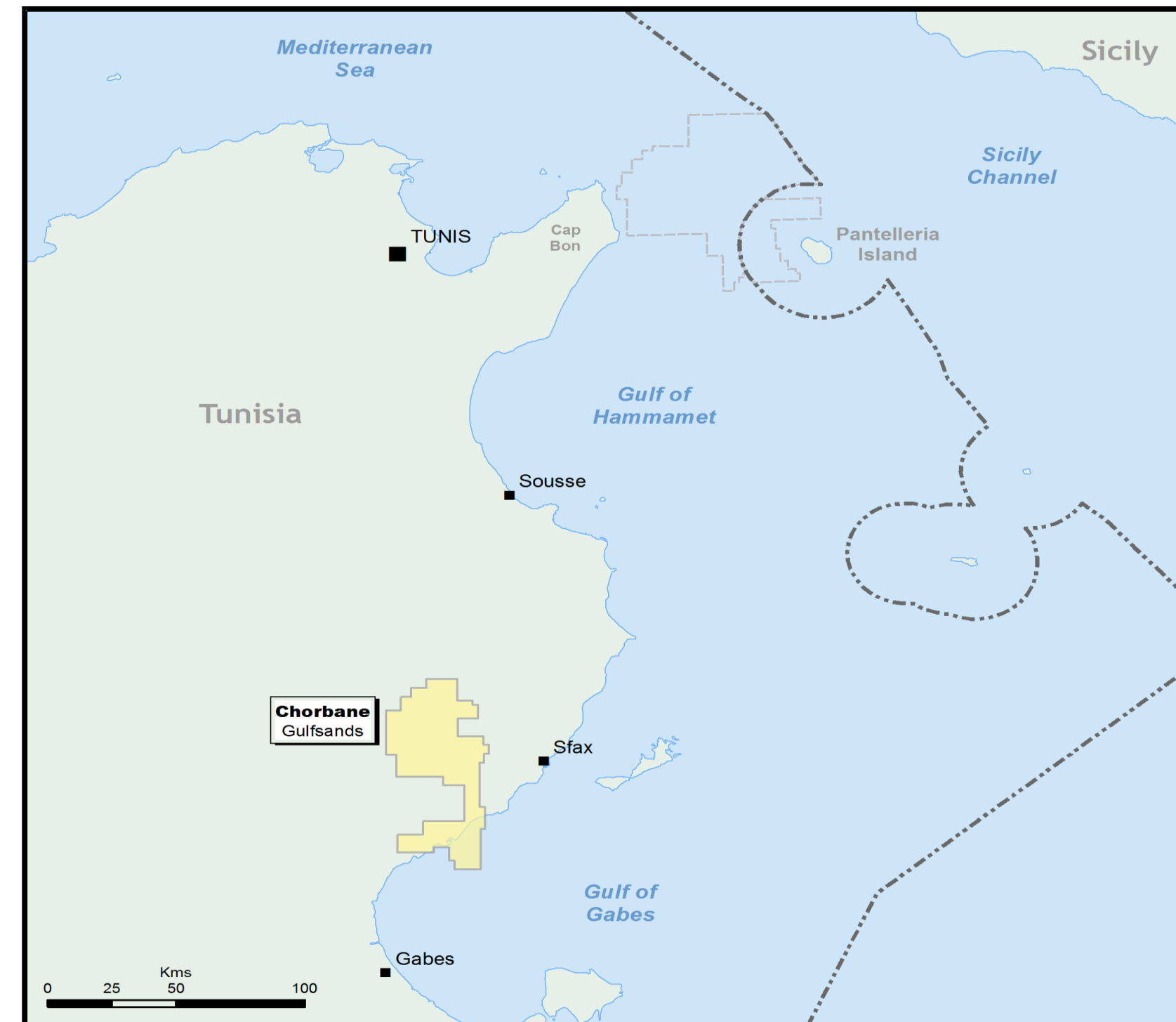
12 – 44 – 129 MMboe (Senergy)

- Sidi Agareb (SAG) is drill ready: Eocene/Cretaceous light oil prospect with multiple stacked reservoirs
- Jurassic wet gas play analogous to Chaal discovery to west of permit

License Term Extended to July 2017

Work Programme:

- Drill well to 2500m TD
- Acquire 200km of 2D seismic
- ETAP are planning a 3D seismic survey in the adjacent Chaal permit





# Moulay Bouchta Permit

# Tax/Royalty Onshore Morocco

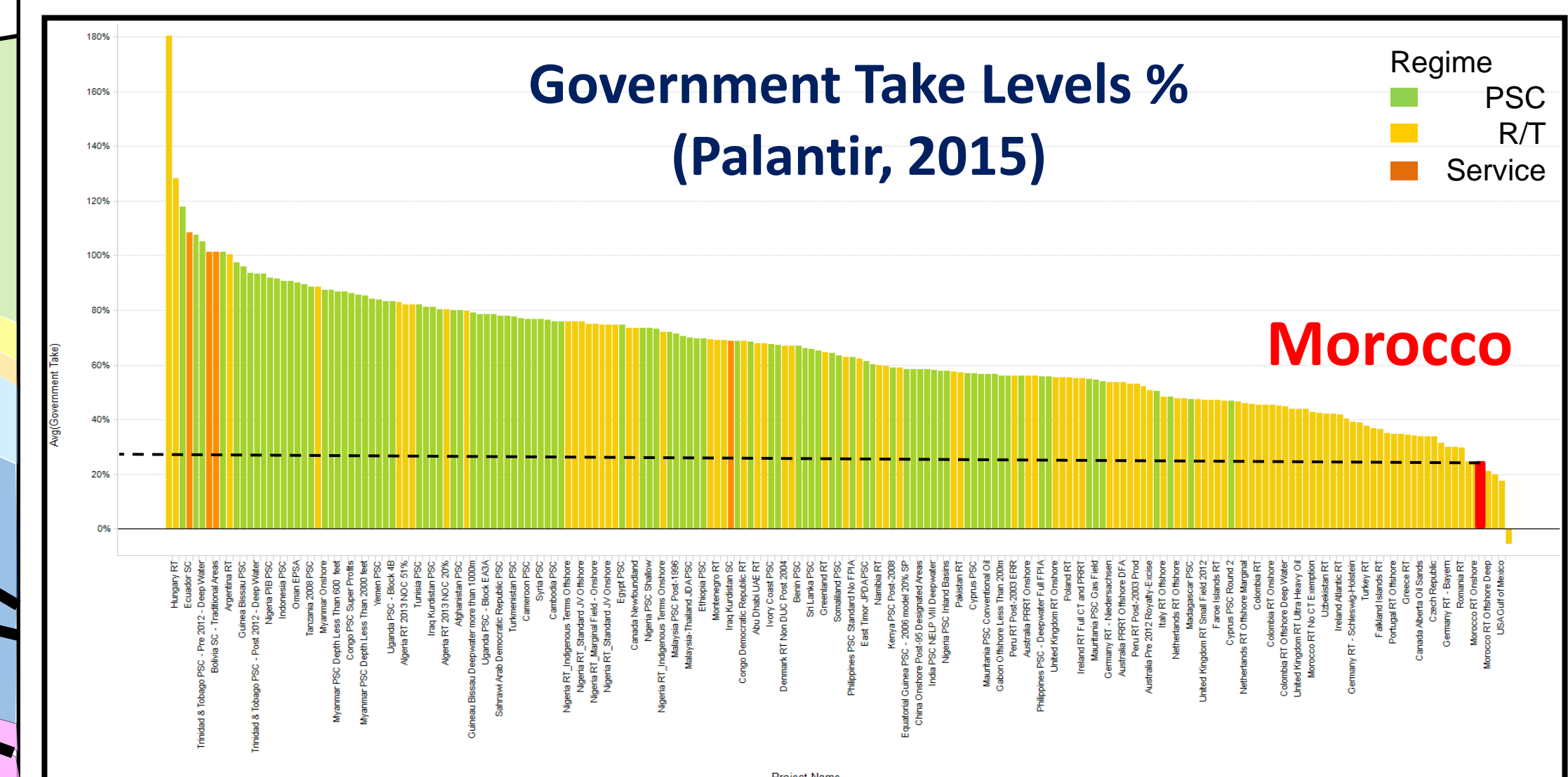
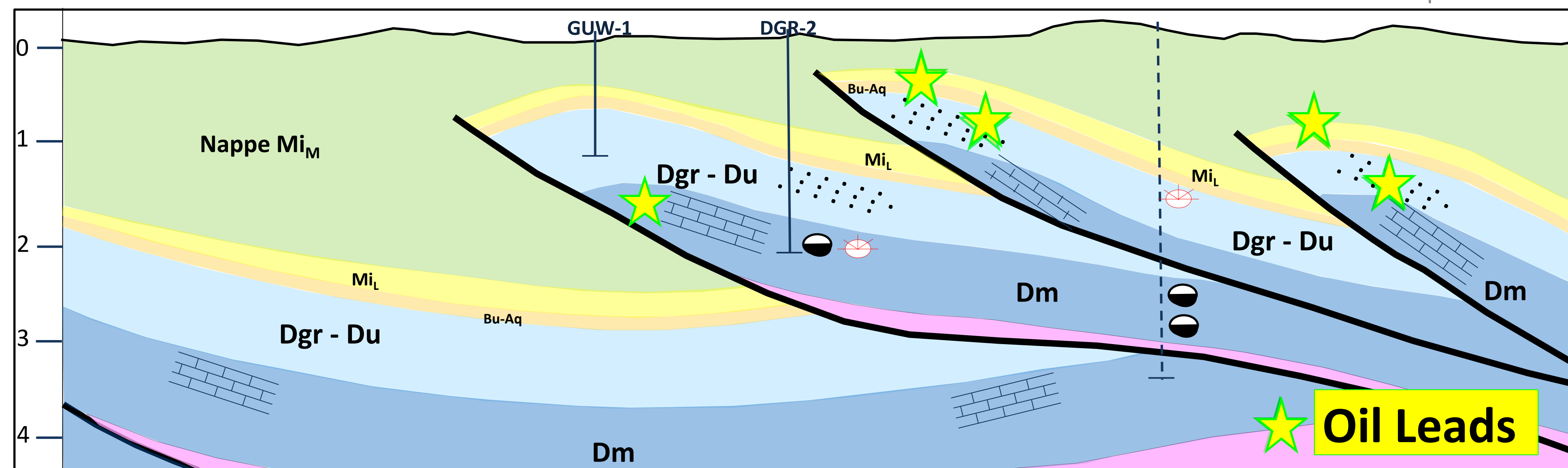
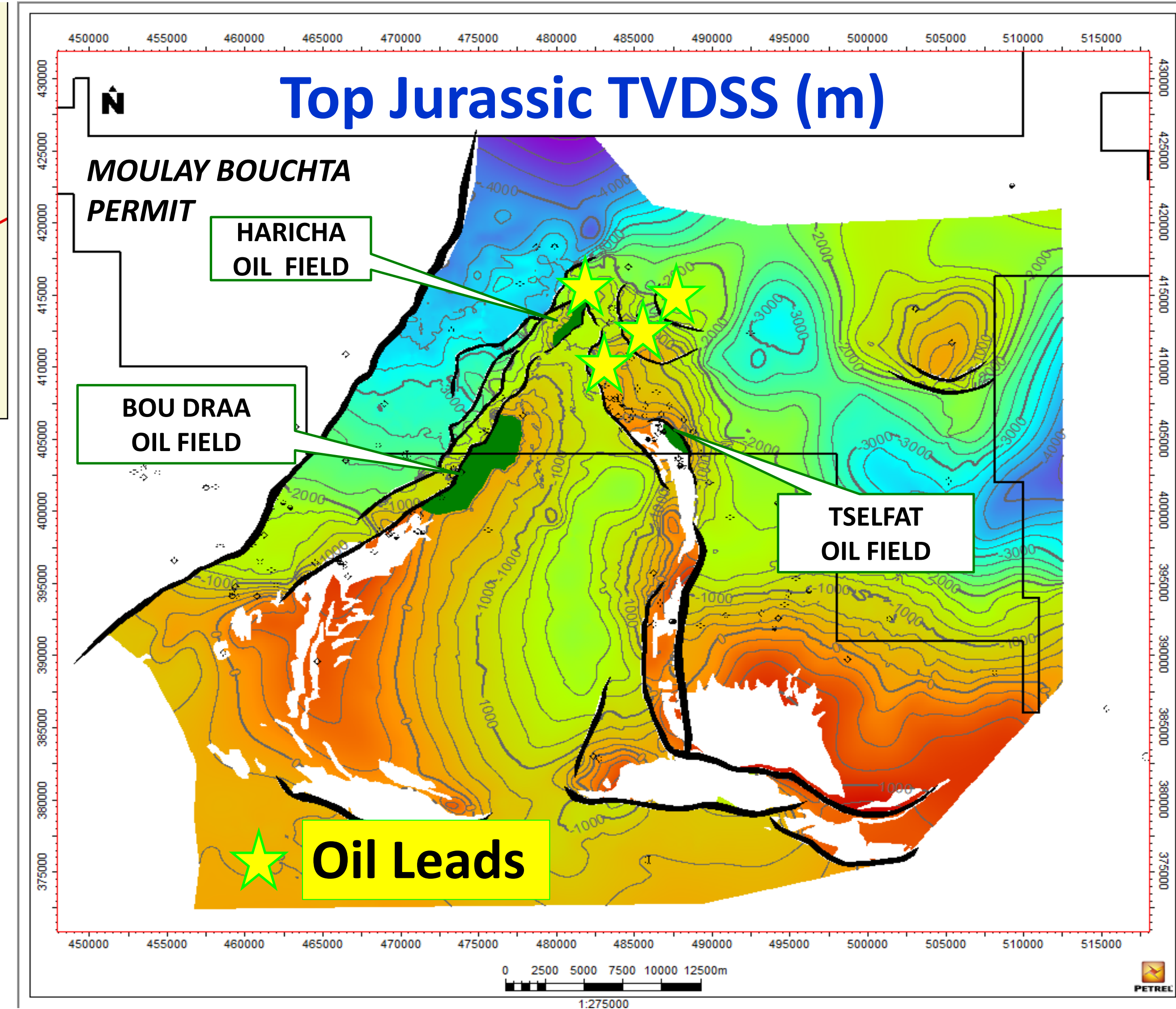
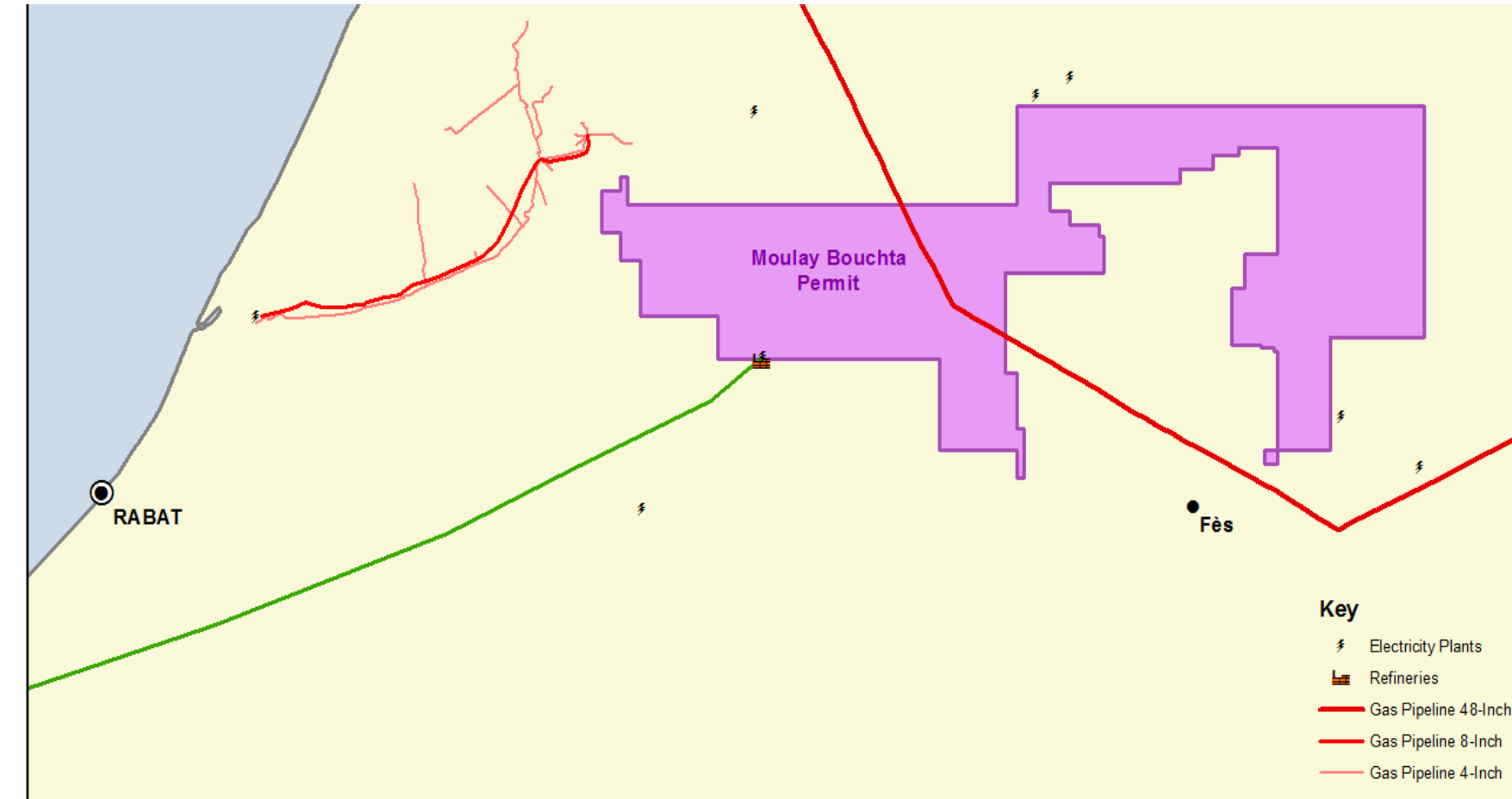
## Light Oil Exploration, Excellent Fiscal Terms

## Gulfsands Operator 100% WI External Rif Tectonic Belt in Northern Morocco

- Historical oil production from 3 oilfields on permit developed using old technology, from circa 1920 to 1980
- Opportunities for near-field exploration, in-fill drilling and frontier exploration in a proven Moroccan oil play
- Lead Concepts of ~149 MMboe resource identified (not audited)
- Net Prospective Resources 0.5 – 11.4 – 74.9 MMboe (Senergy)

8 year Exploration Period from June 2014

Work Programme (1<sup>st</sup> Phase): 500km 2D seismic, reprocessing





# Gulfsands Petroleum – APPEX 2016

**For more information on all opportunities  
come to BOOTH 81**

**Our Data Rooms are located at our  
London St James's Office, SW1**