

KrisEnergy Ltd – Southeast Asian Opportunities

March 1st , 2016





1. Introduction – KrisEnergy



KrisEnergy – A Fast Growth E&P Company

Our Business



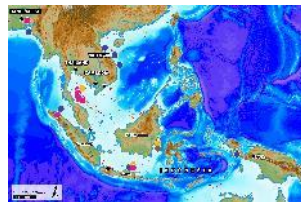
- **Established in 2009**, our vision is to become the leading upstream oil and gas E&P company in Asia
- Diverse portfolio across the E&P life cycle balancing positive cash flow with significant exploration potential
- Focus on balance between oil and gas resources, reserves and production

Our Team



- Highly experienced (20+ years) management and technical team with proven track record for value creation through organic growth and acquisitions
- Approx. 420 employees in **Bangladesh, Cambodia, Indonesia, Singapore, Thailand and Vietnam**

Our Portfolio



- 19 contract areas in Bangladesh, Cambodia, Indonesia, Thailand and Vietnam with gross acreage of **60,754 sq. km**
- Operator of 13 blocks
- Multiple exploration prospects and leads in all contract areas
- As at 31 Dec 2015
2P¹: **105.9 mmboe**
2C¹: **109.4 mmboe**

Our Operations



- 5 producing assets
- Average 2015 WI production **9,692 boepd**; **>19,000 boepd** in early 2016
- First oil at **Nong Yao G11/48** on 17 June 2015; and first oil at **Wassana G10/48** on 14 Aug 2015
- Developments ongoing for **G6/48 and Cambodia Block A** oil fields, and **Lengo and Block A Aceh** gas projects

Our Financials



- 2015 revenue **US\$60.2 mm**, EBITDAX **US\$37.2 mm**
- 2015 lifting costs **US\$8.49/boe**
- Total assets **US\$1.0 bln**; Gearing **38.1%**
- Rights issue in Aug 2015 raised net proceeds of **S\$164.4 mm**

¹ Netherland, Sewell & Associates, Inc. ("NSAI")

KrisEnergy Portfolio

Rigorously selected assets based on in-depth knowledge of geology and complexities of regional basins

A. Gulf of Thailand

B8/32 & B9A	4.6345%
G6/48	30% (Op)
G10/48	100% ¹ (Op)
G11/48	22.5%
Cambodia Block A	52.25% (Op)

B. Bangladesh

Block 9	30% (Op)
SS-11	45%

C. Sumatra

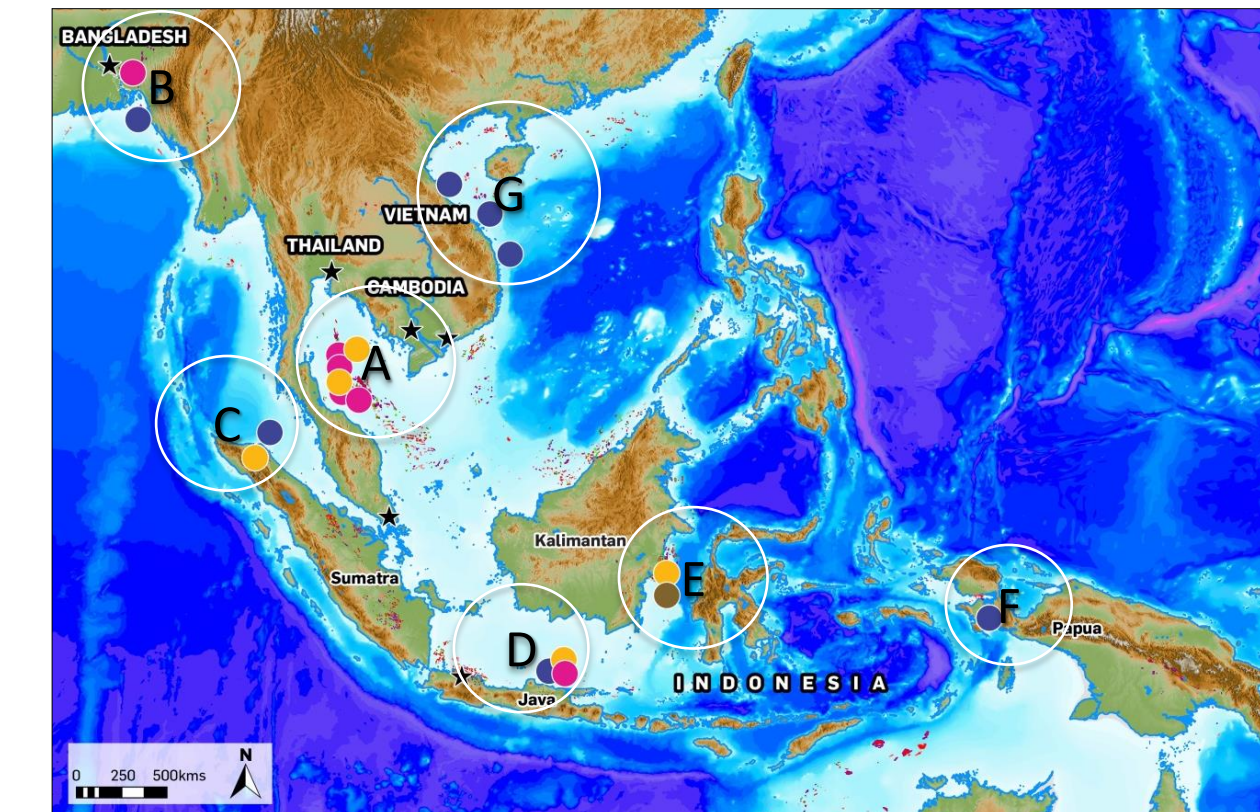
East Seruway	100% (Op)
Block A Aceh	41.6666%

D. Offshore East Java

Bulu	42.5% (Op)
East Muriah	50% (Op)
Sakti	95% (Op)

¹ After a 5% transfer of working interest to the Cambodian Ministry of Mines and Energy ("MME")

² KrisEnergy has an effective 89% working interest in G10/48



● Production and near production

● Development pending

● Discovery requiring appraisal

● Exploration

★ KrisEnergy Office

E. Makassar Strait

Kutai	54.6% (Op)
Bala-Balakang	85% (Op)

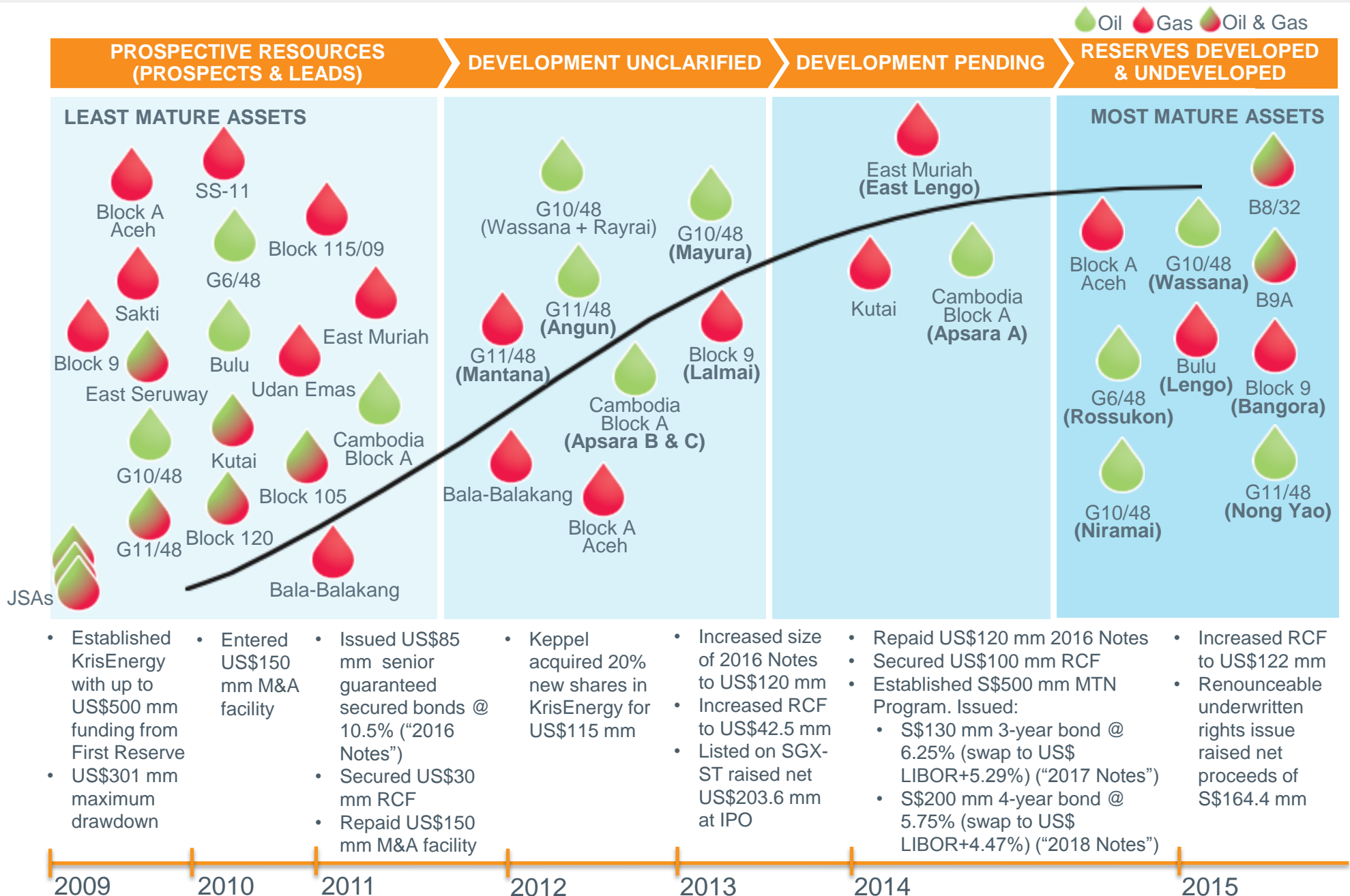
F. Onshore West Papua

Udan Emas	100% (Op)
-----------	-----------

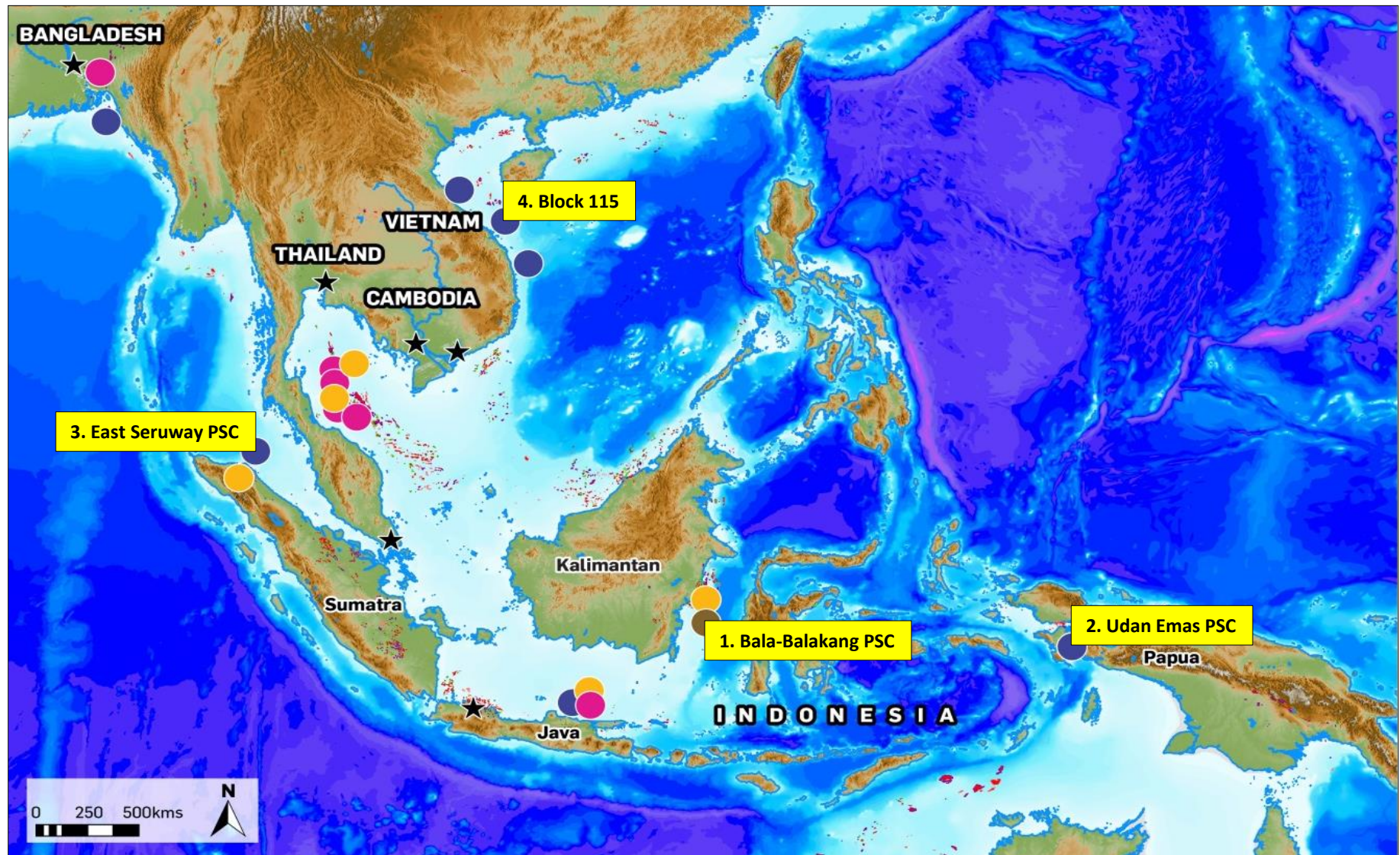
G. Offshore Vietnam

Block 105-110/04 ("Block 105")	51% (Op)
Block 120	33.33%
Block 115/09	100% (Op)

Portfolio Building Across the E&P Life Cycle



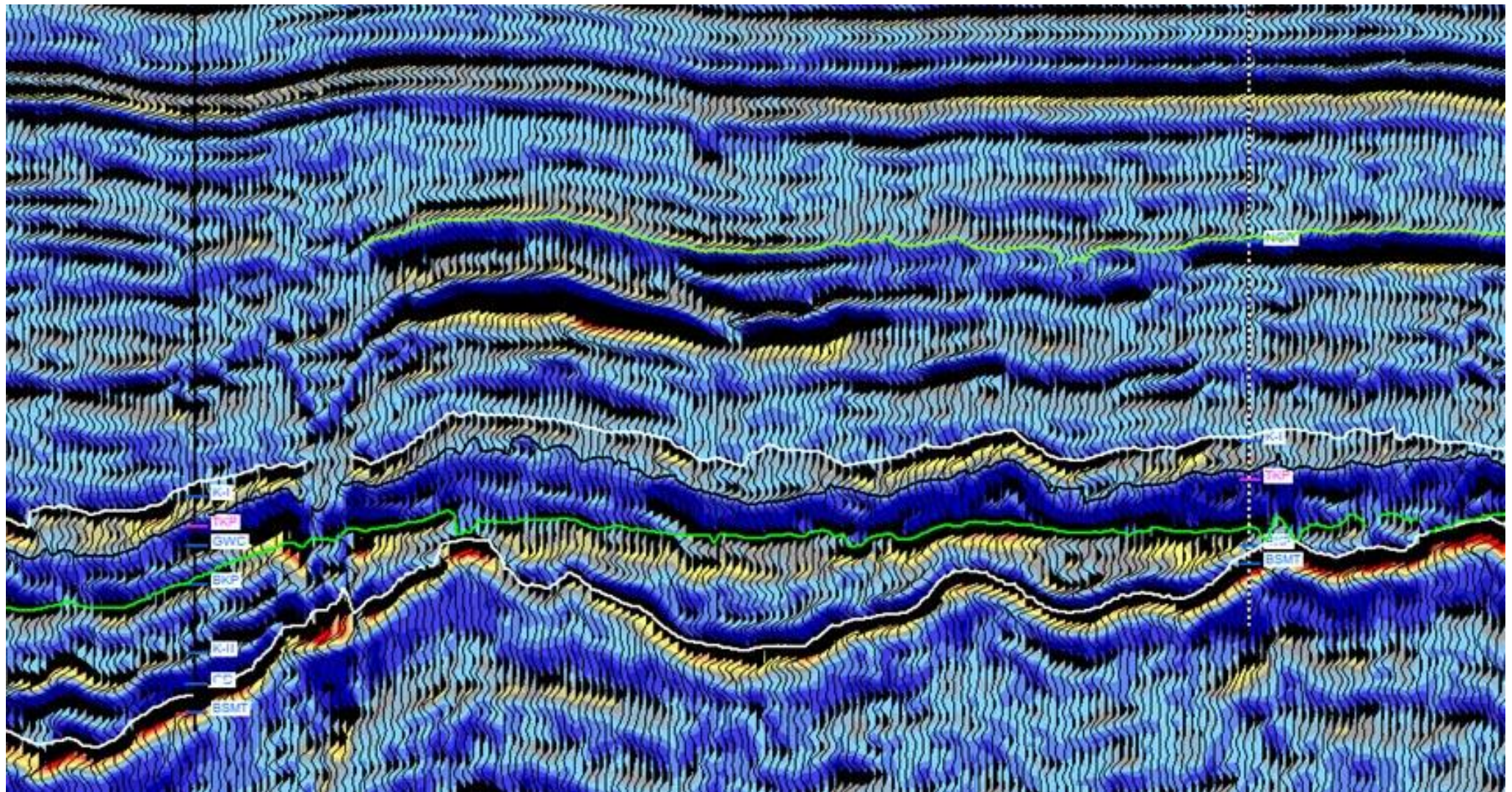
KrisEnergy Portfolio



● Production and near production
● Development pending

● Discovery requiring appraisal
● Exploration

★ KrisEnergy Office



A. Indonesia – Bala-Balakang Block



Indonesia – Bala-Balakang PSC (Kutai Basin)

Bala Balakang PSC

- Status: Development unclarified and exploration
- Area: 3,143km²
- Location: Southern edge of the Kutai Basin, Makassar Strait
- Water Depths: 20m to over 1,000m
- Working interest 2C resources DU: 7.9 mmboe¹

Partners:

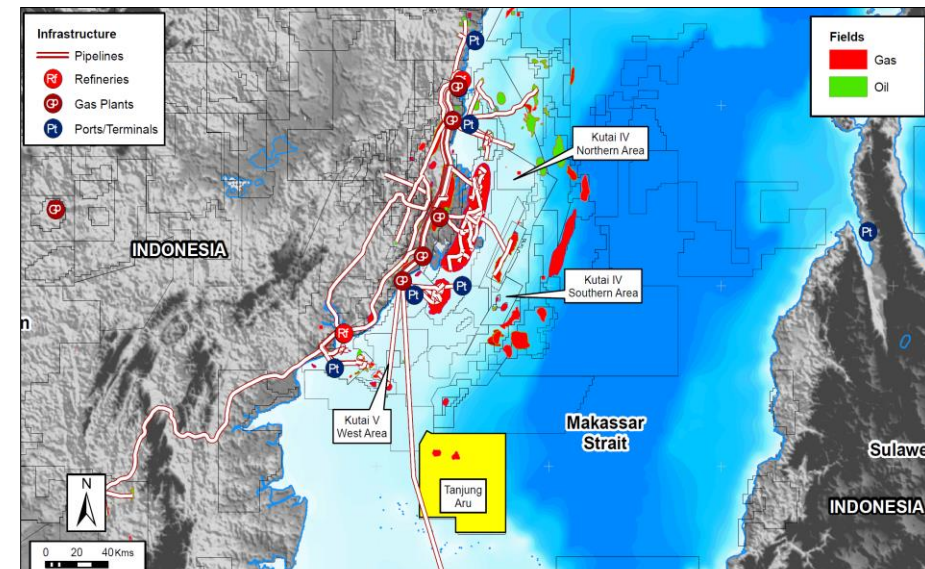
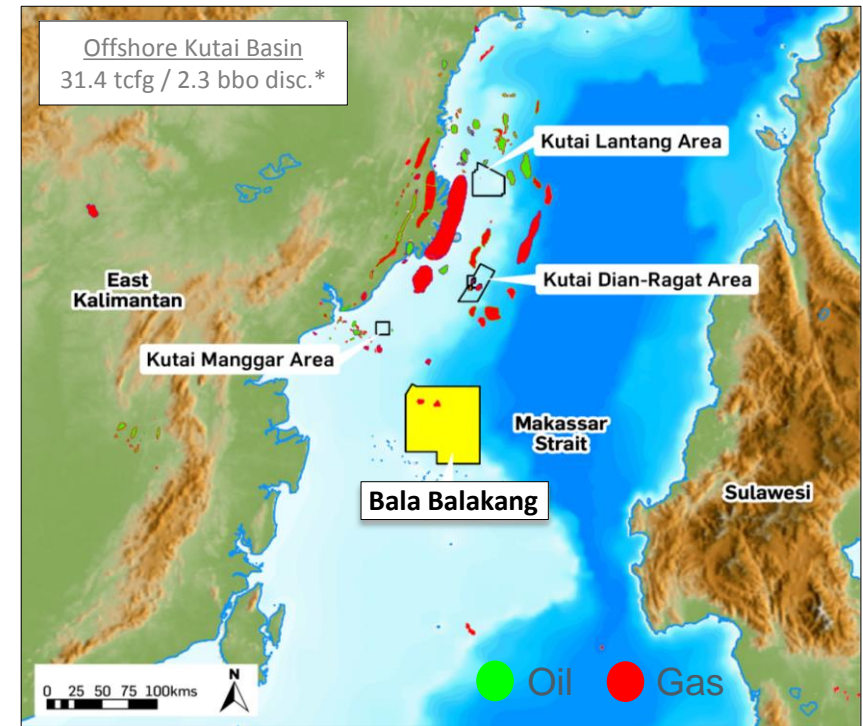
- KrisEnergy 85% (Operator)
- Natuna Ventures Pte Ltd 15%

Commitments:

- Block awarded December 12th, 2011
- 10 year term (3 terms comprising 3+3+4 years) plus a 20 year production period
- Firm commitments completed (500km² 3D seismic 2013)
- Optional one (1) well commitment due by end permit year 8 (December 12th, 2019)

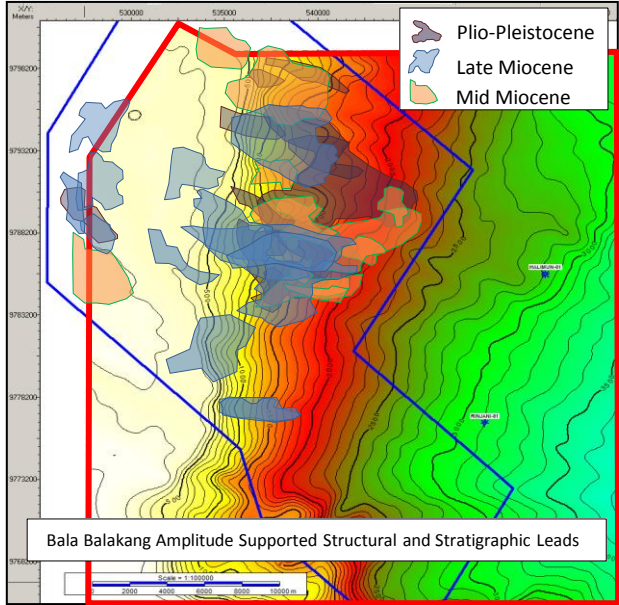
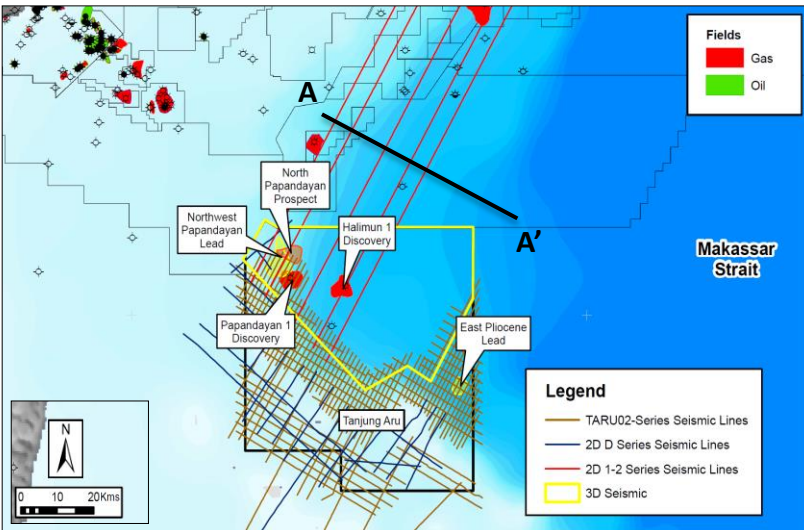
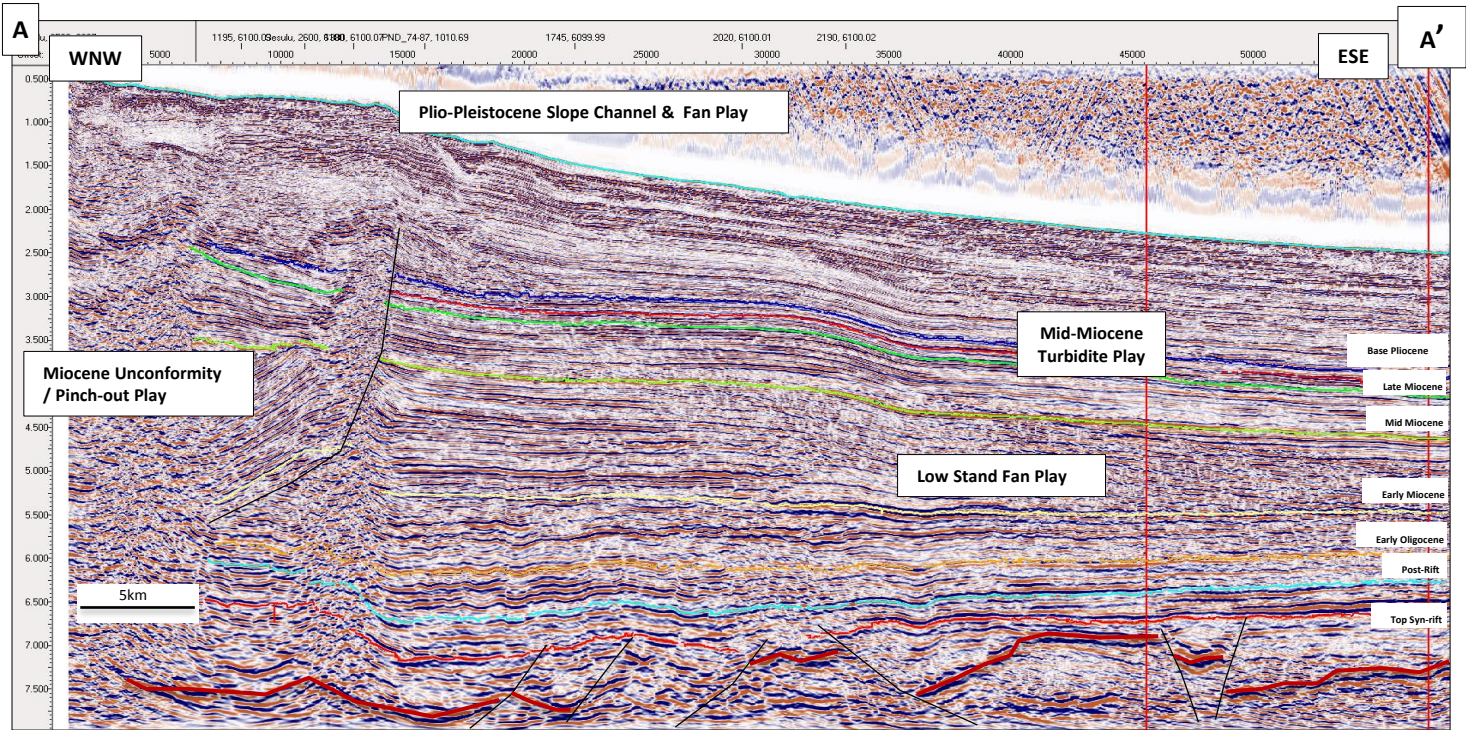
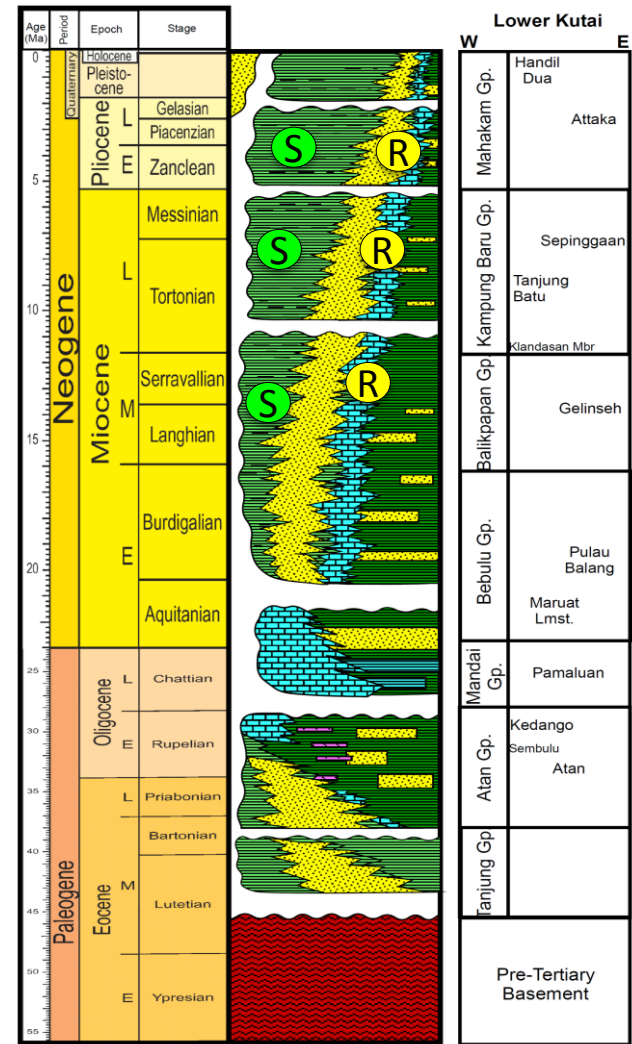
¹ NSAI estimate as at 31 December 2014

* IHS (2015)



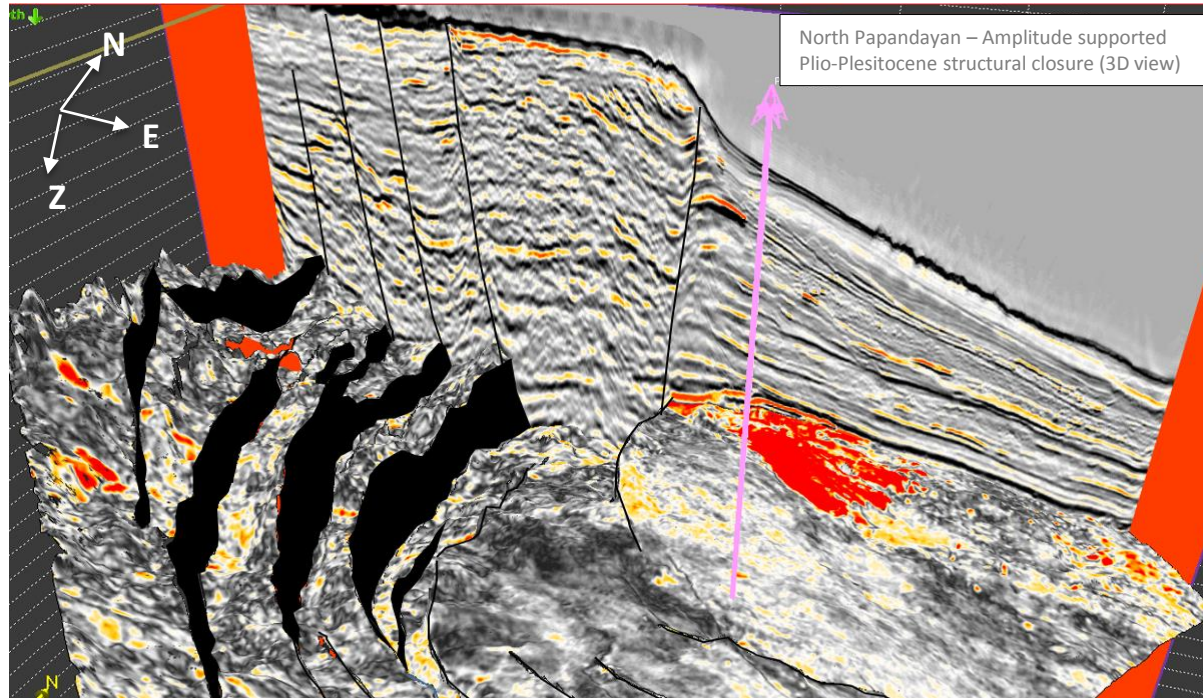
Indonesia – Bala-Balakang Regional Setting (Kutai Basin)

Kutai Basin - Chronostratigraphy



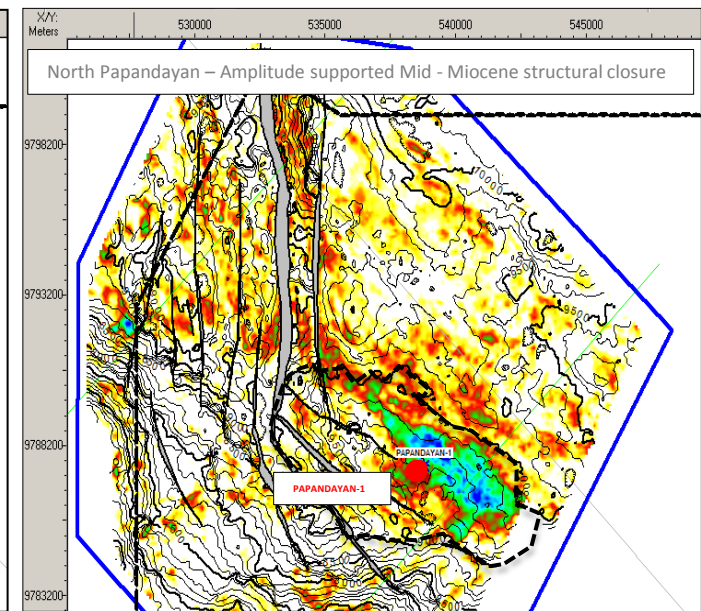
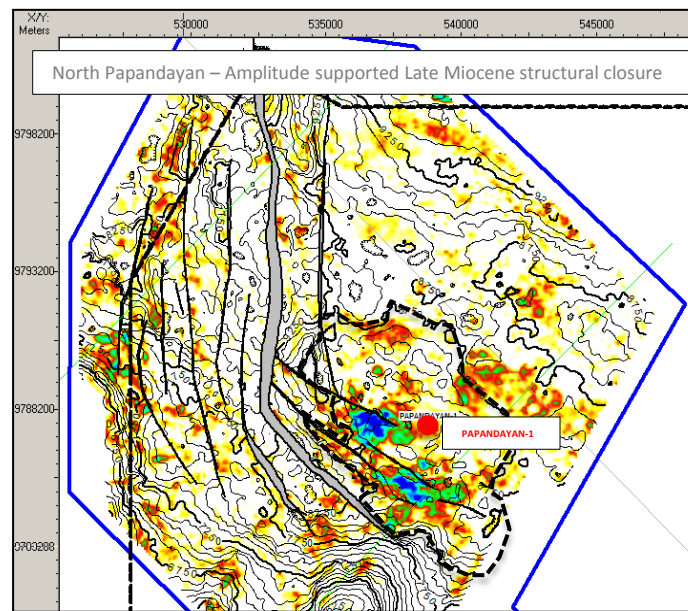
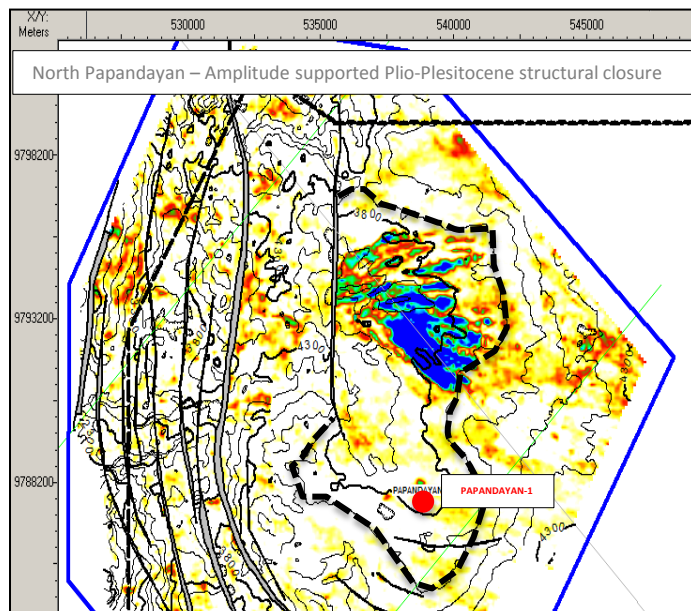
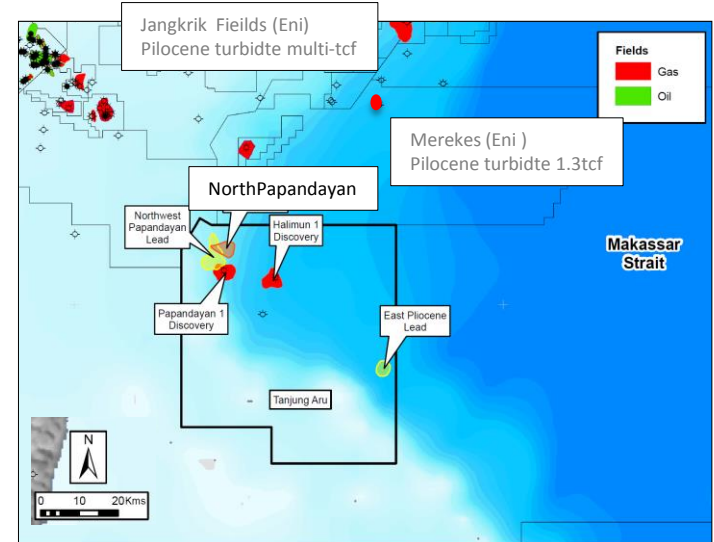
	Total Area of amplitude anomalies (acre)	Indicative In-Place (bcf)
Pliocene Leads	17,800	1,687
Late Miocene Leads	20,175	1,057
Mid Miocene	14,100	738
Total		3,482

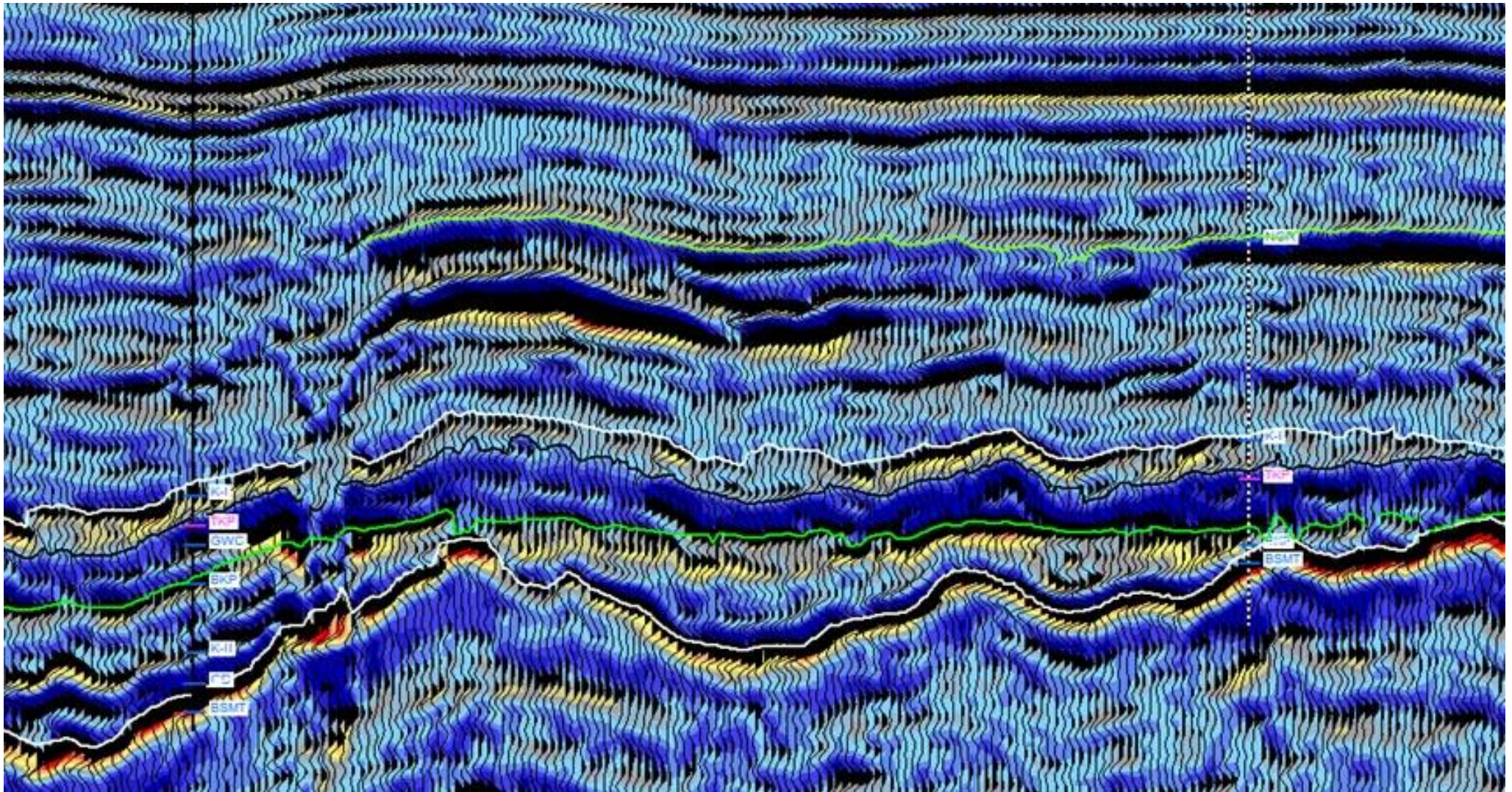
Bala-Balakang: North Papandayan Prospect



North Papandayan
Total Block

650 – 1,050 bcf GIP
3,500 bcf GIP





B. Indonesia – Udan Emas Block



Indonesia – Udan Emas PSC (Bintuni Basin)

Udan Emas PSC

- Status: Exploration
- Area: 5,396km²
- Location: Onshore West Papua across the Bintuni Basin

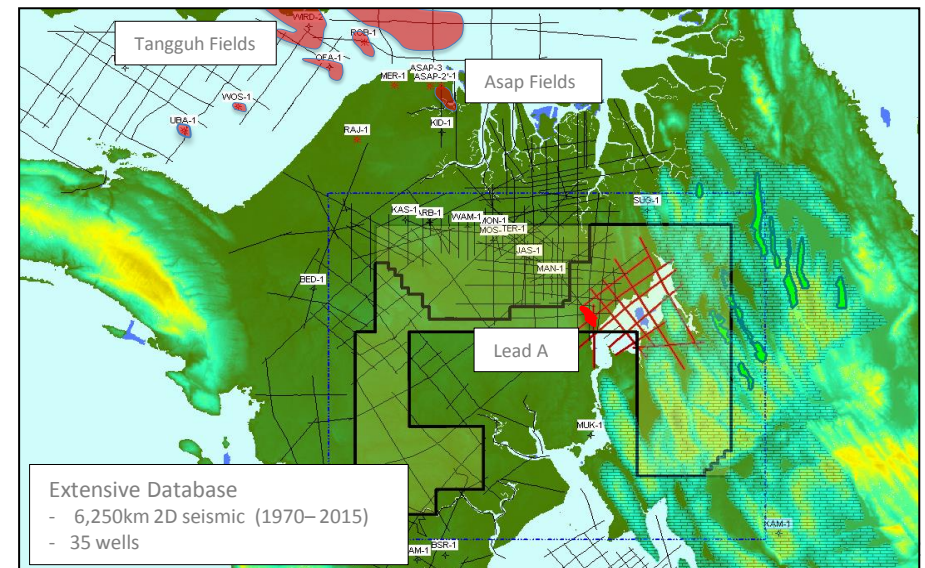
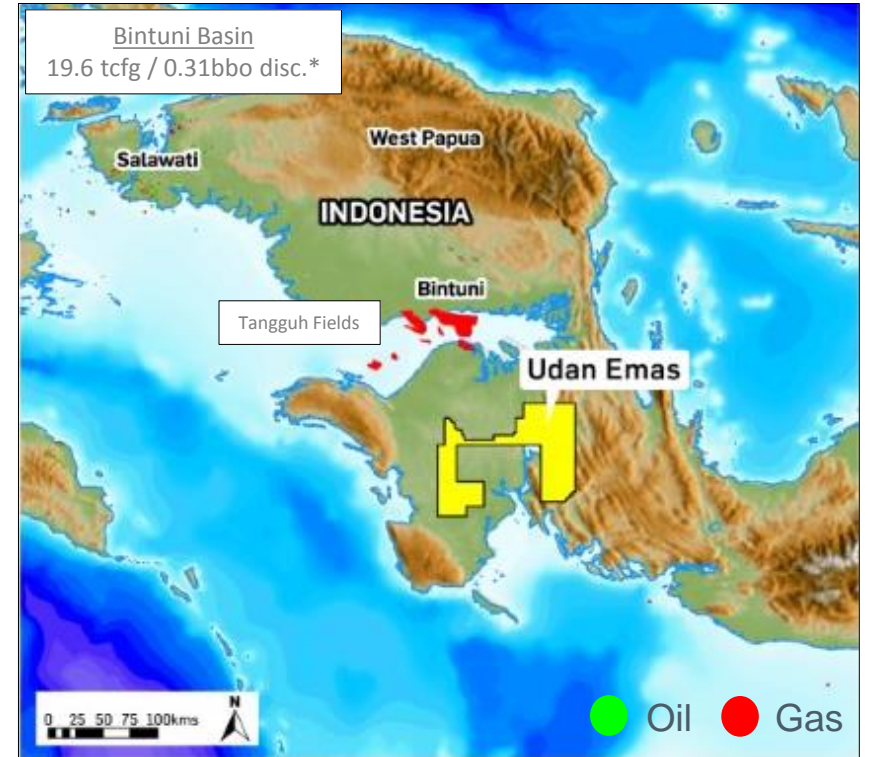
Partners:

- KrisEnergy 100% (Operator)

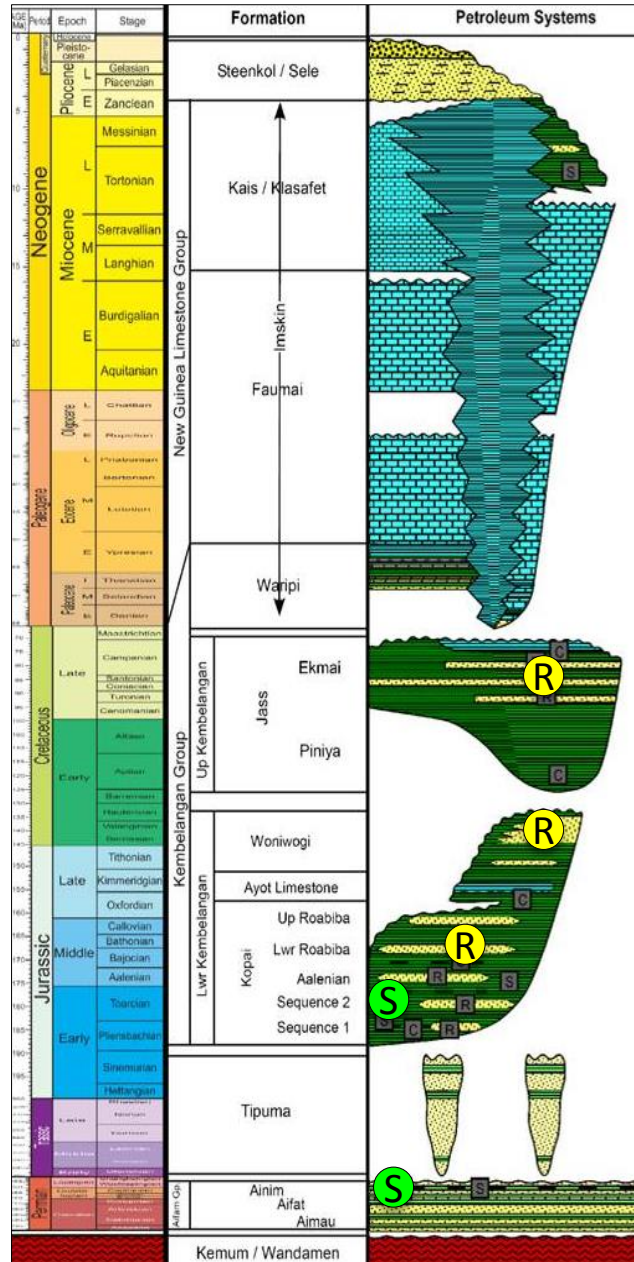
Commitments:

- Block awarded July 12th, 2012
- 10 year exploration term (3 terms comprising 3+3+4 years) plus a 20 year production period
- Firm commitments completed (300km 2D seismic 2014/15)
- Optional one (1) well commitment due by end permit year 8 (July 12th, 2020)

* IHS (2015)

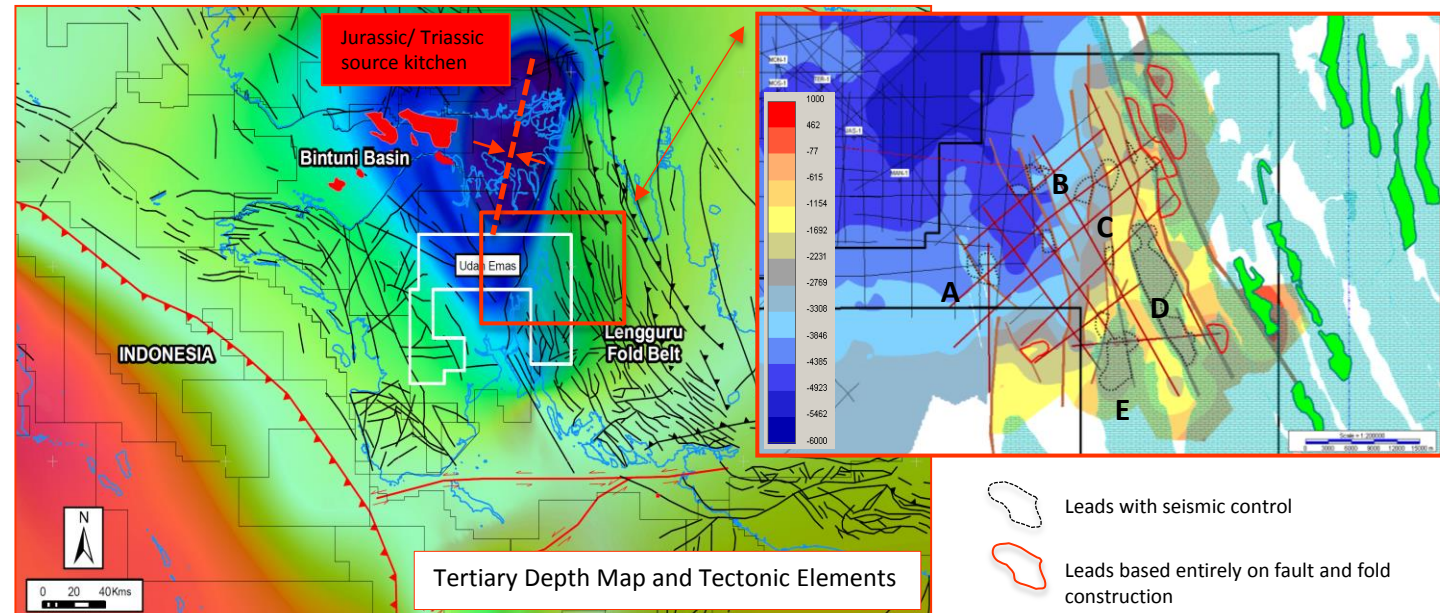
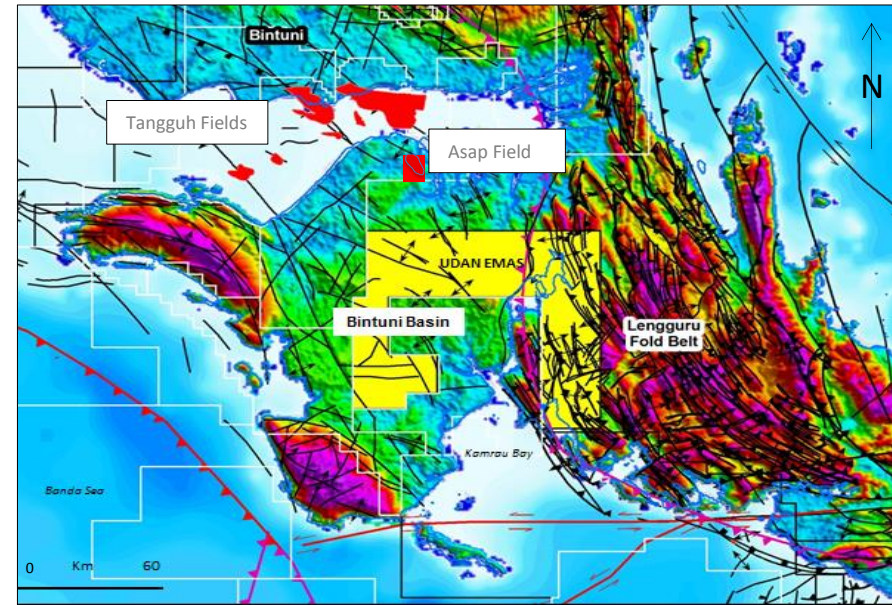


Indonesia – Udan Emas Regional Setting (Bintuni Basin)



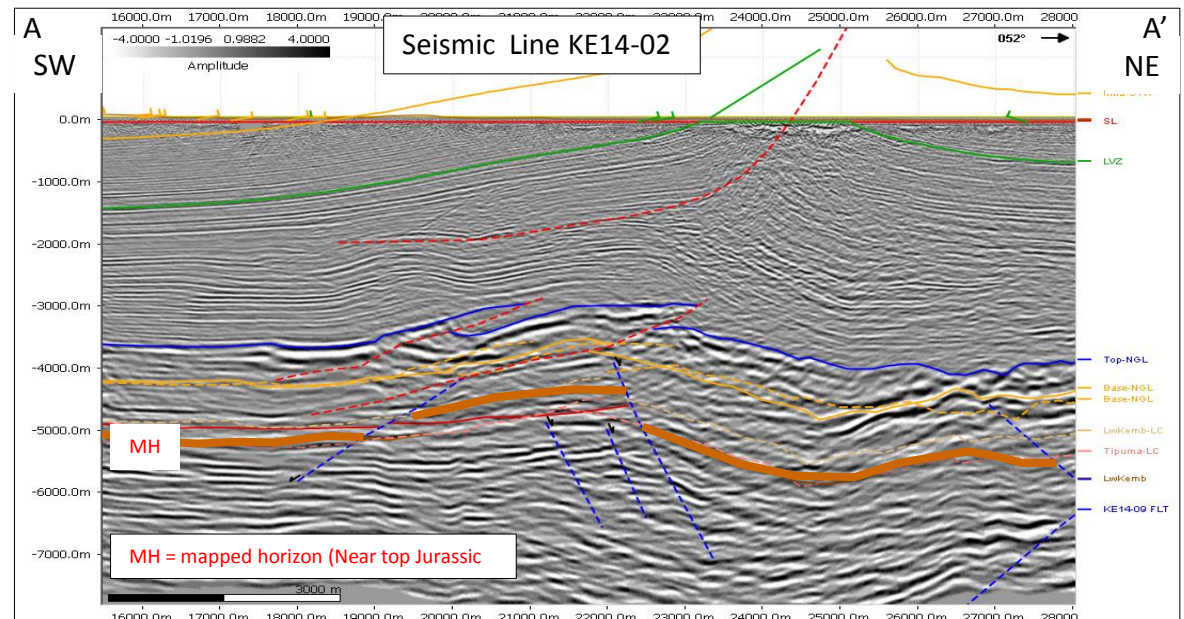
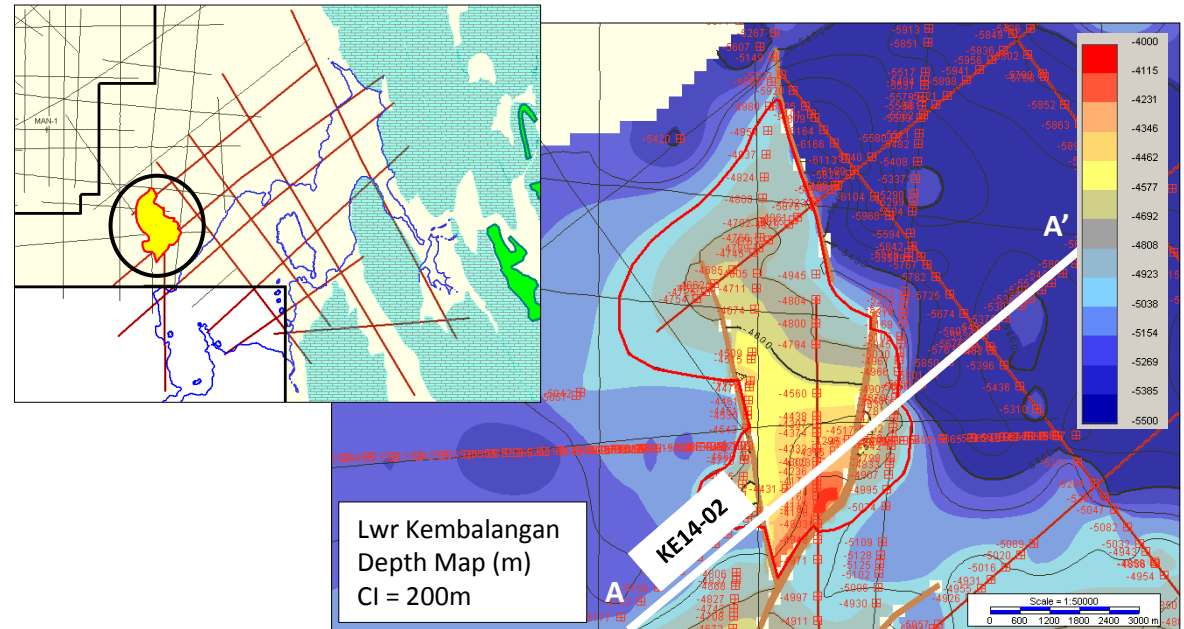
Main Play Type

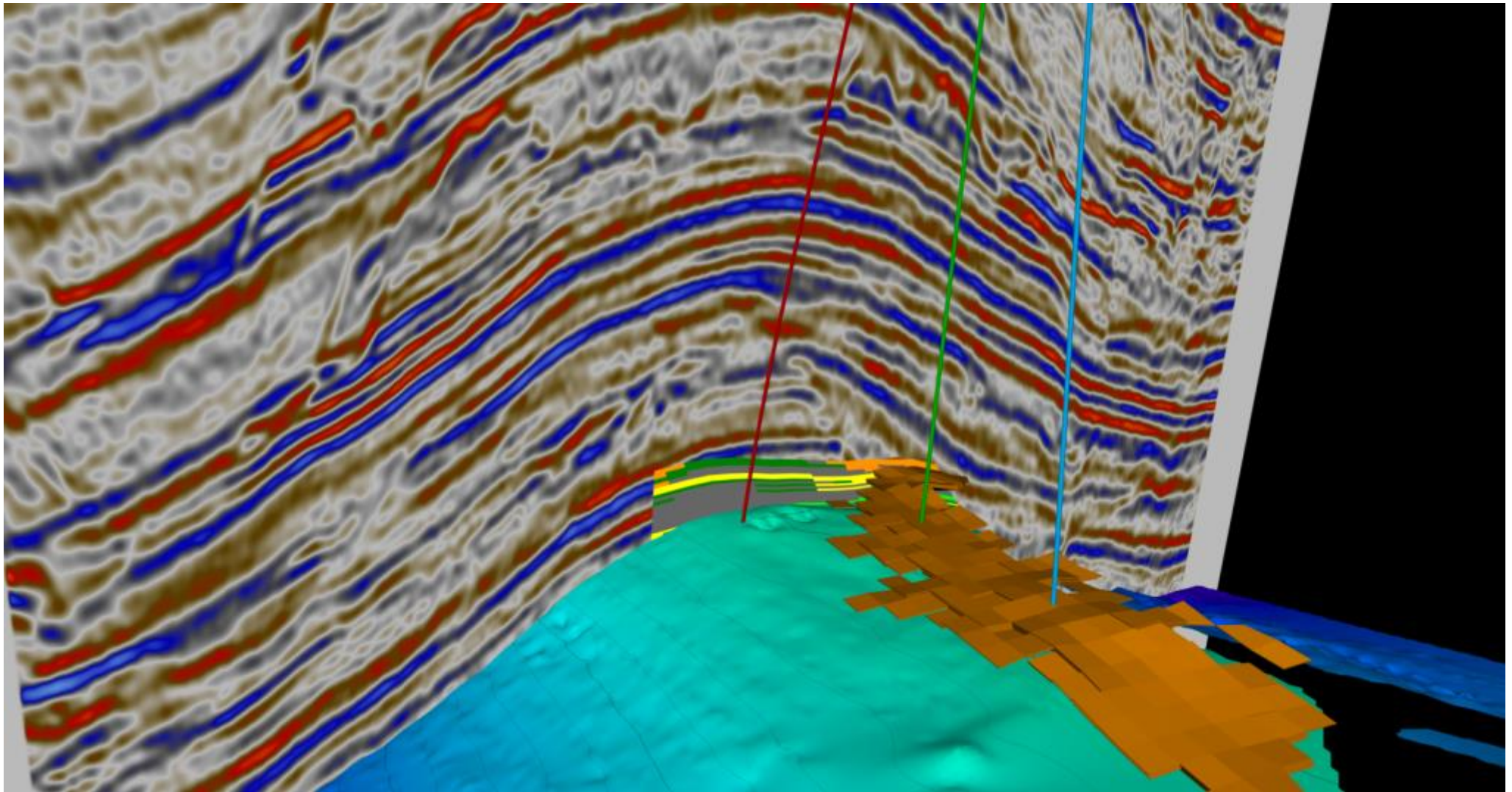
- Older Mesozoic faulted rift system underlying a younger thrust regime
 - Middle Jurassic sandstone target
 - Adjacent to a proven Permo-Triassic source kitchen
 - Multi-tcfc lead inventory
- Tangguh Fields 13.6 tcfc / 66mbc
- Asap Field 1.4 tcfc (Woodmac, 2015)



Udan Emas – Lead A

- **Prospect/Lead Name:** LEAD A
- Seismic Line: KE14-02
- Water Depth: Onshore 92' AMSL
- Objective Depth: -13,450'
- Exploration Well TD: -16,000'
- Primary Objective: Roabiba SS
- Secondary Objective: EUK Ekmai, Lower Kembalangan
- **Description:** Fault Closed structural trap on the Post Rift Lower Kembalangan Group. The prospect is mapped entirely on 2D data depth converted in 2D Move
- **Key Resource Parameters:**
 - Depth Below GL: ~ -13550'
 - Gas: 15% CO₂, 80% Methane, 5% Ethane
 - Max Closure Area: 6857 acres
 - Max Anomaly Area: No Seismic Attributes
- **Resource Estimate:** circa 1 cfg
- **Chance of Success:** Under Assessment
- **Critical Risk Factor(s):** Reservoir Quality, Trap Timing and integrity through LFB formation, southern structural closure.





C. Indonesia – East Seruway Block



Indonesia – East Seruway PSC (North Sumatra Basin)

East Seruway PSC

- Status: Exploration
- Area: 1,172km²
- Location: North Sumatra Basin, Malacca Strait
- Water Depths: 25 to 60m

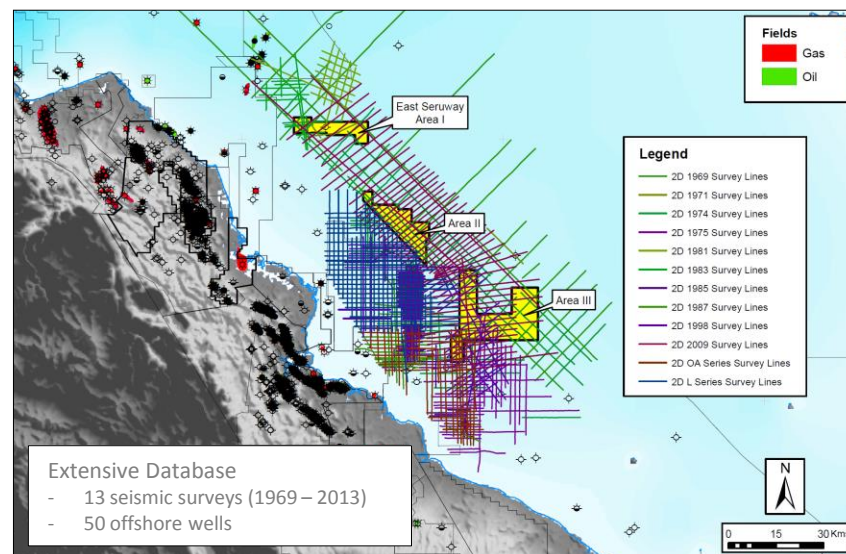
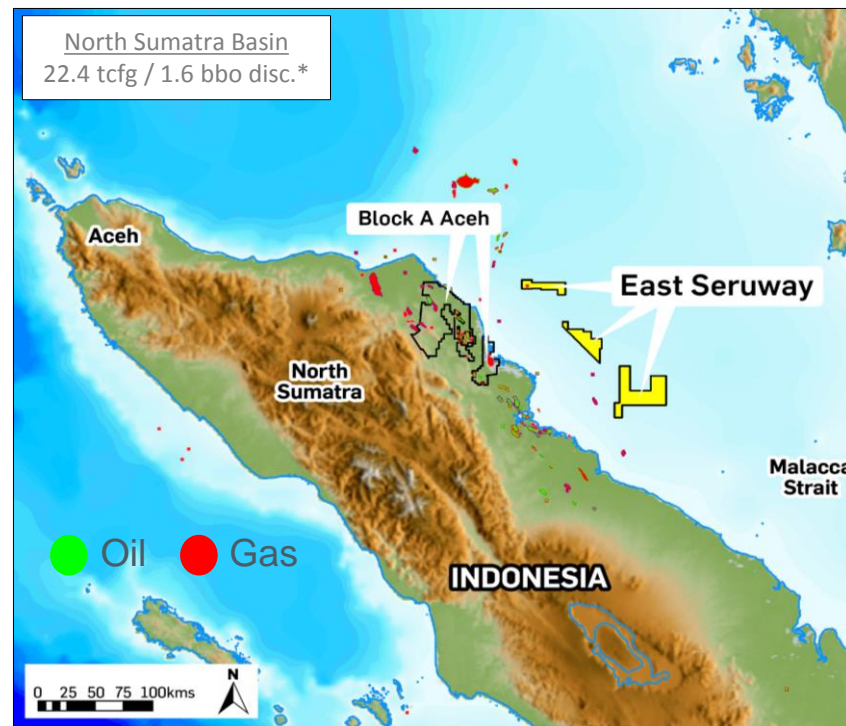
Partners:

- KrisEnergy 100% (Operator)

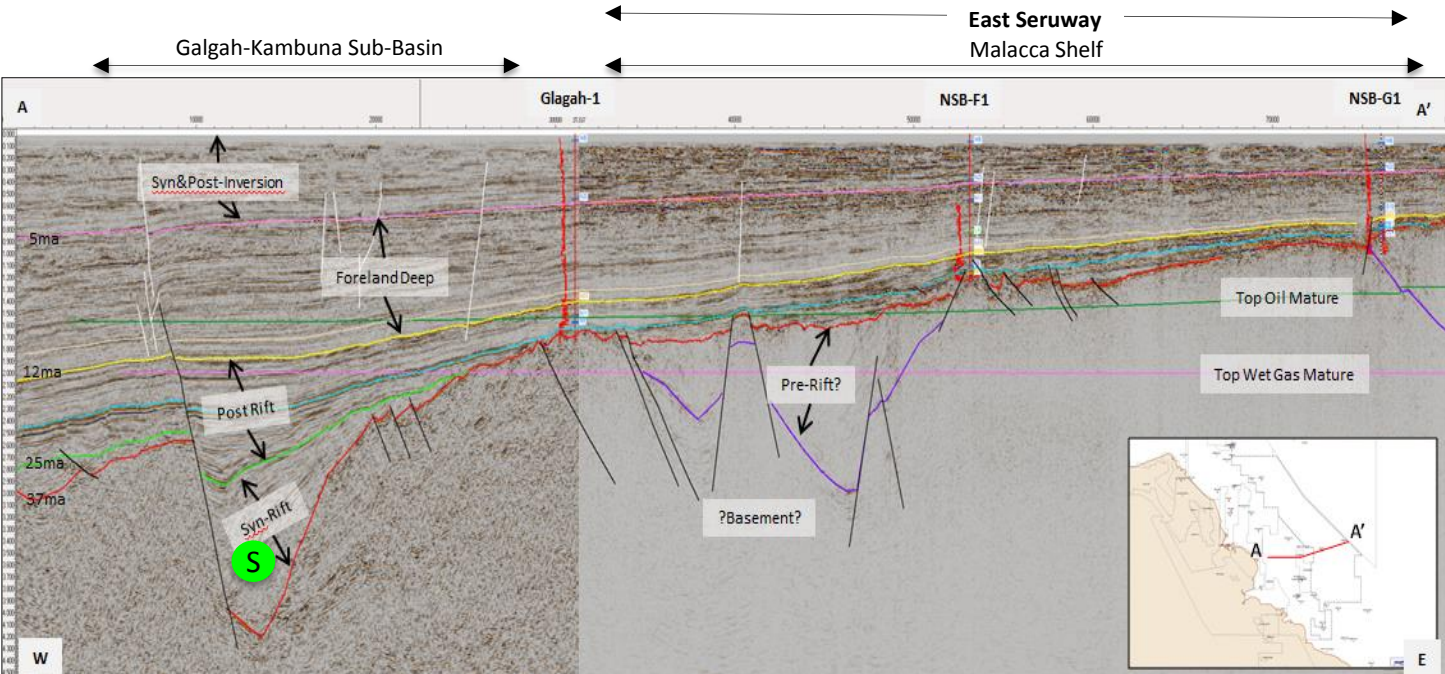
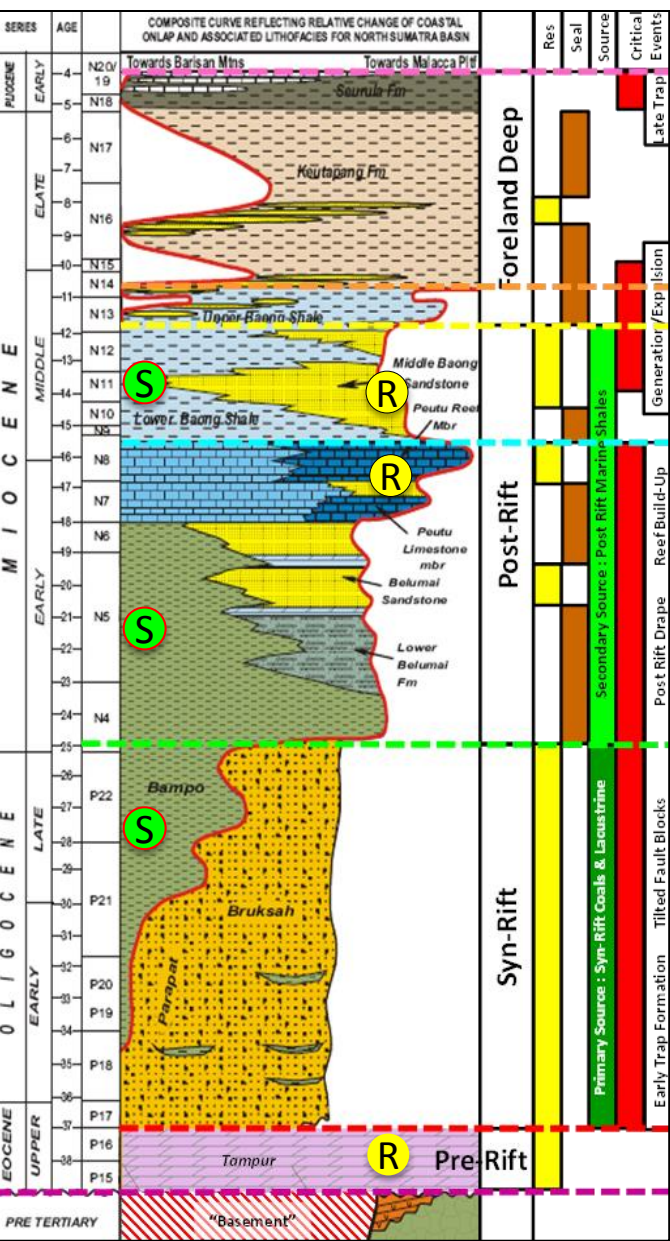
Commitments:

- Block awarded November 13th 2008
- 10 year exploration term (3 terms comprising 3+3+4 years) plus a 20 year production period
- 19 month *force majeure* on work activity (2010 - 2012), enforced due to now resolved dispute between the Indonesian central government and regional Acehese authorities
- Partial firm commitments completed (2,142km 2D seismic 2010)
- Outstanding firm one (1) well commitment due by end permit year 8 (June 13th, 2018)

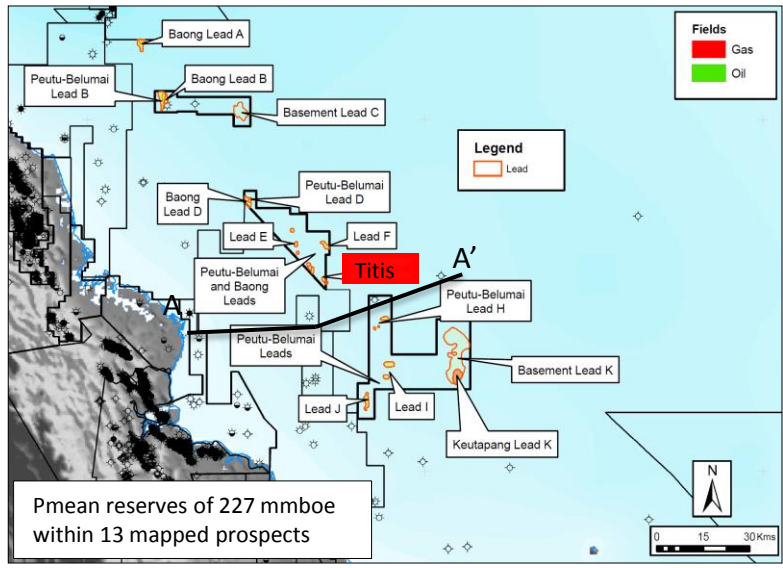
* IHS (2015)



Indonesia – East Seruway Regional Setting (North Sumatra Basin)

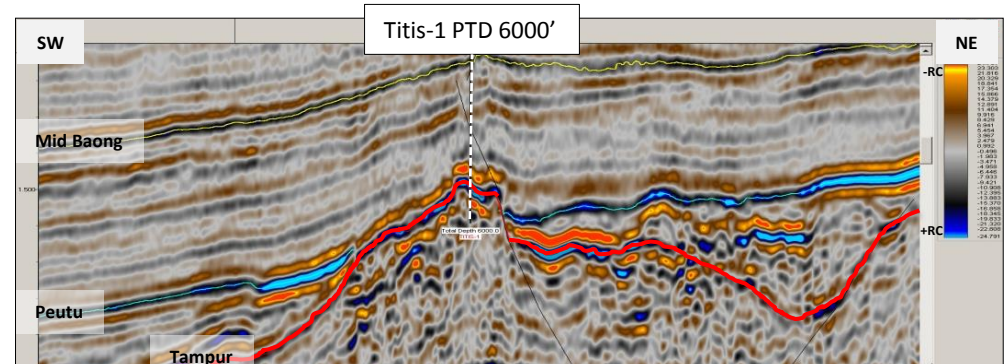
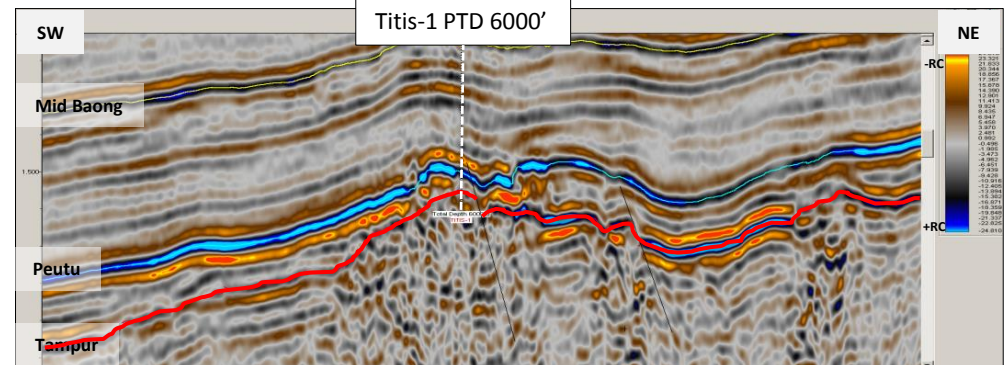
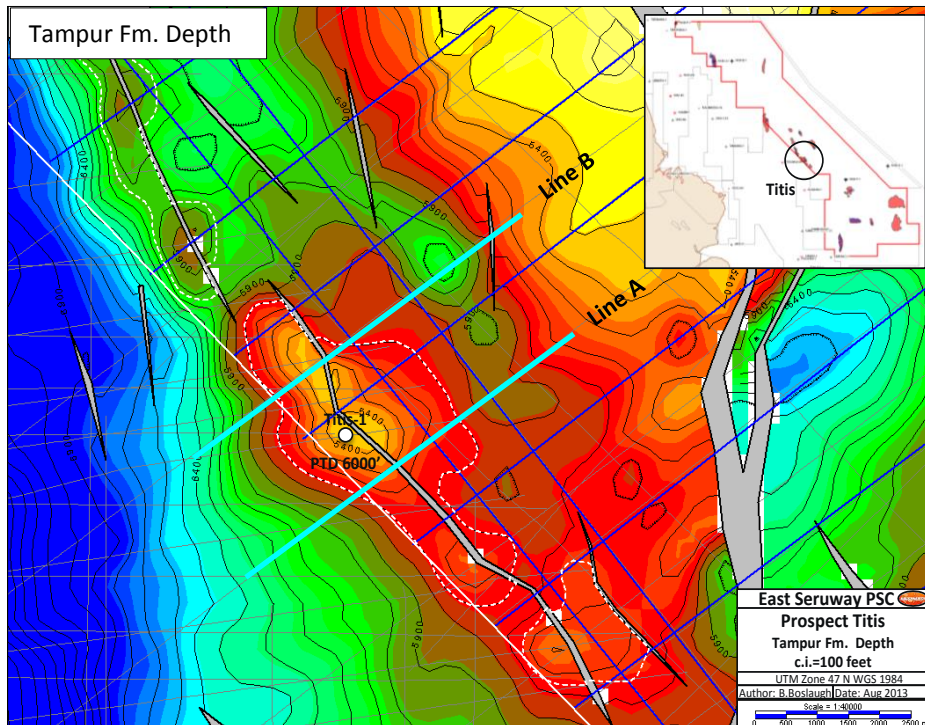
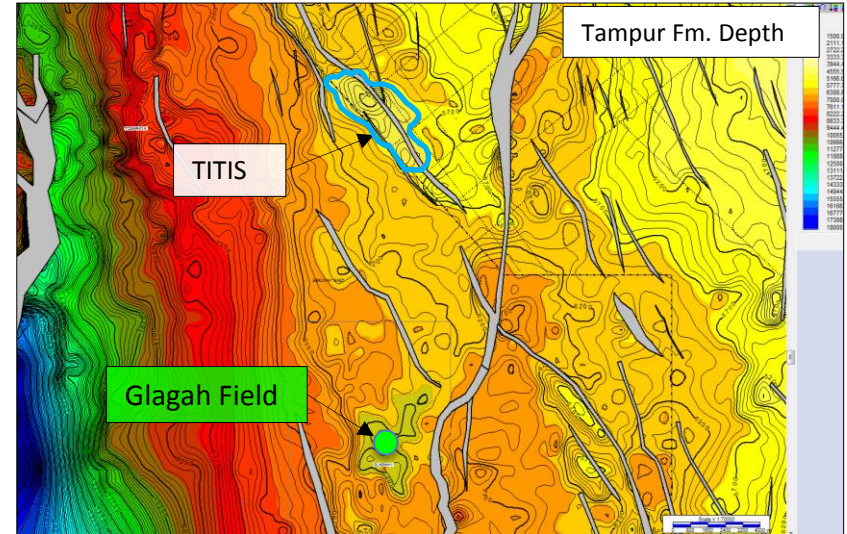


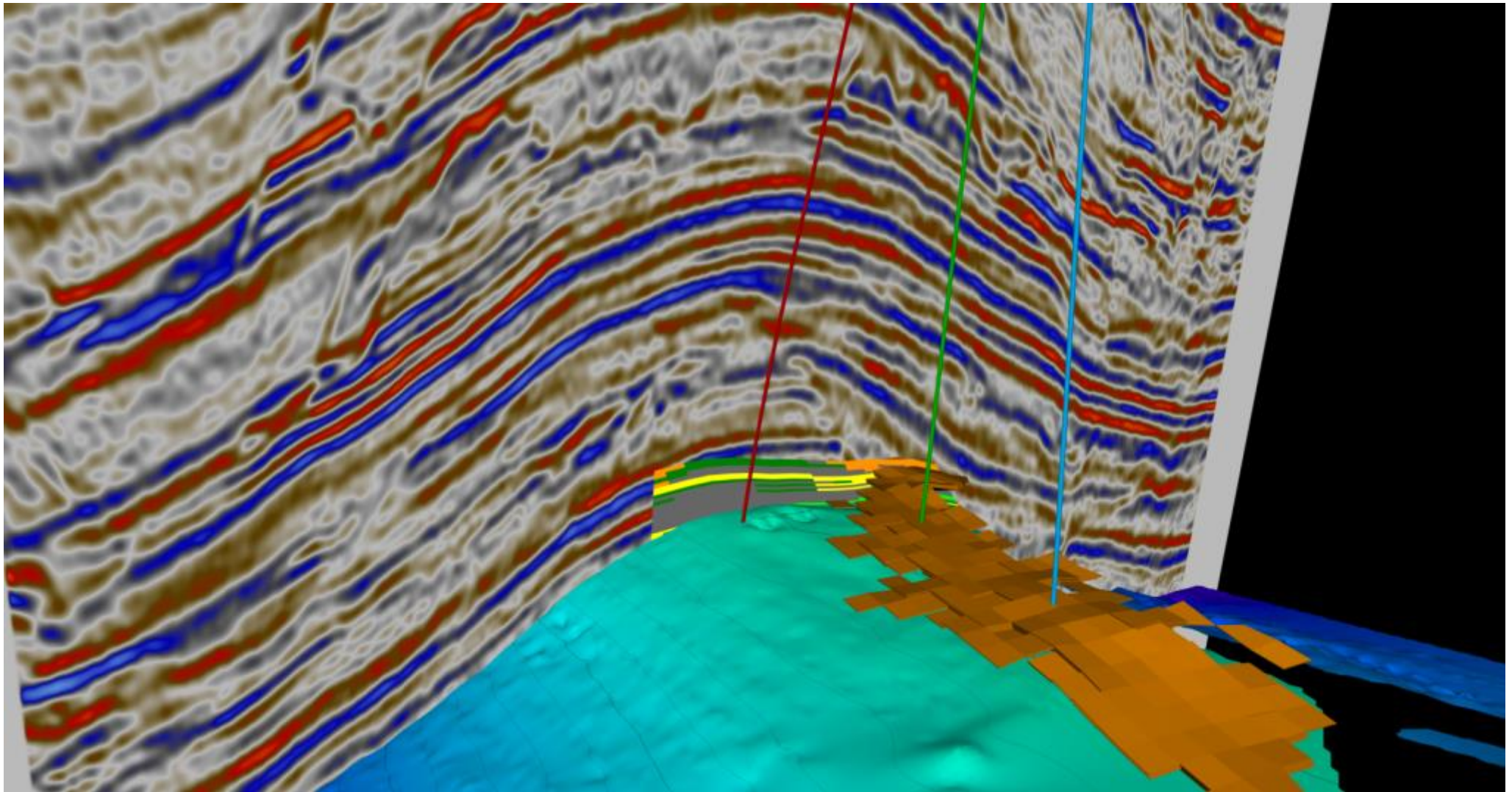
EAST SERUWAY PETROLEUM SYSTEM PLAYS				
Mega Sequence	Reservoir	Seal	Source	Prod Analogues & Discoveries
Foreland Deep	Keutapang Clastics	Keut shale	Syn Rift & Post Rift	Togar (mdt sample – no test)
Post-Rift	Baong Clastics	Upr. Bao	Syn Rift & Post Rift	Langsa TAC: shut in Tanjung Perling JAU
Post-Rift **SECONDARY TARGETED PLAY**	Peutu Carbonate Build-ups	Lwr. Bao	Syn Rift & Post Rift	NSB-U1: 14.8 mmcsfpd NSO-A: producing Langsa TAC: shut in
Post-Rift	Belulai Clastics	Peu	Syn Rift & Post Rift	Kambuna: shut in, cum ~ 40bcf
Pre-Rift **PRIMARY TARGETED PLAY**	Tampur Do-lomite	Bel Peu	Syn Rift & Post Rift	Glagah: 2100 bopd Alur Siwah: 6.75 mmcsfpd NSO-K1 443 bopd + .7 NSO-L1 2185 bopd + 1.64 NSO-J2 8.3 mmcsfpd



East Seruway – Titis-1 Prospect

- **Water Depth:** 210 ft
- **Objective Depth:** -5340ft TVDSS
- **Proposed Total Depth:** -6000 ft TVDSS
- **Primary Objective:** Pre-Rift (Tampur Fm.) Dolomite
- **Description:** Faulted structural trap on the Pre Rift , upper Eocene Tampur Formation dolomite. Overlying dip-closed structural traps on the lower Miocene Peutu and Mid-Baong Formations .
- **Resource Estimate:** **P10/P50/P90 Pmean**
Primary Target: 88 / 69 / 53 70 mmbooiP
- **Recoverable Reserves:** Pmean - 18mmboe
- **Cluster upside:** Pmean - 50mmboe





D. Vietnam – Block 115/09



Vietnam – Block 115/09 (Song Hong Basin)

Block 115/09

- Status: Exploration
- Area: 7,382km²
- Location: Southern Song Hong Basin
- Water depths: 60 to 200m

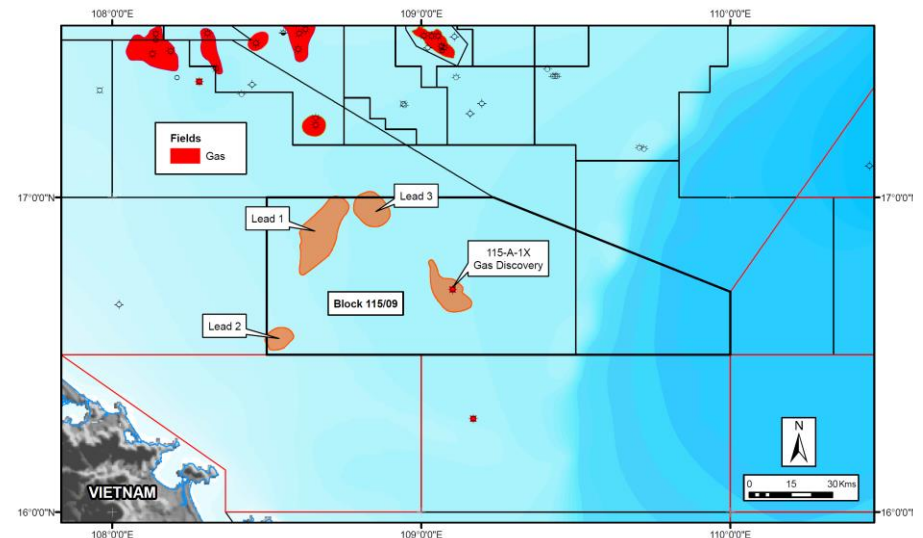
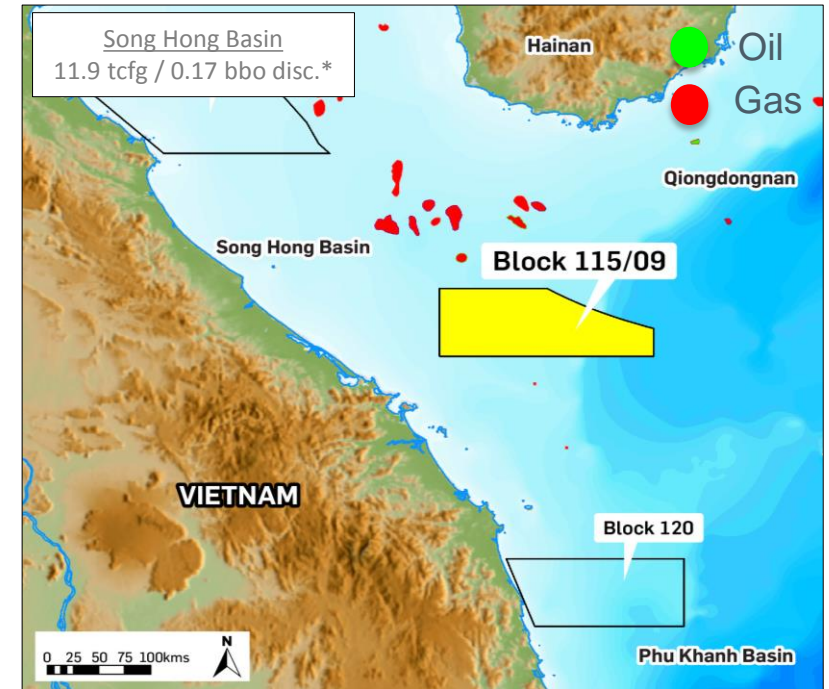
Partners:

- KrisEnergy 100% (Operator)

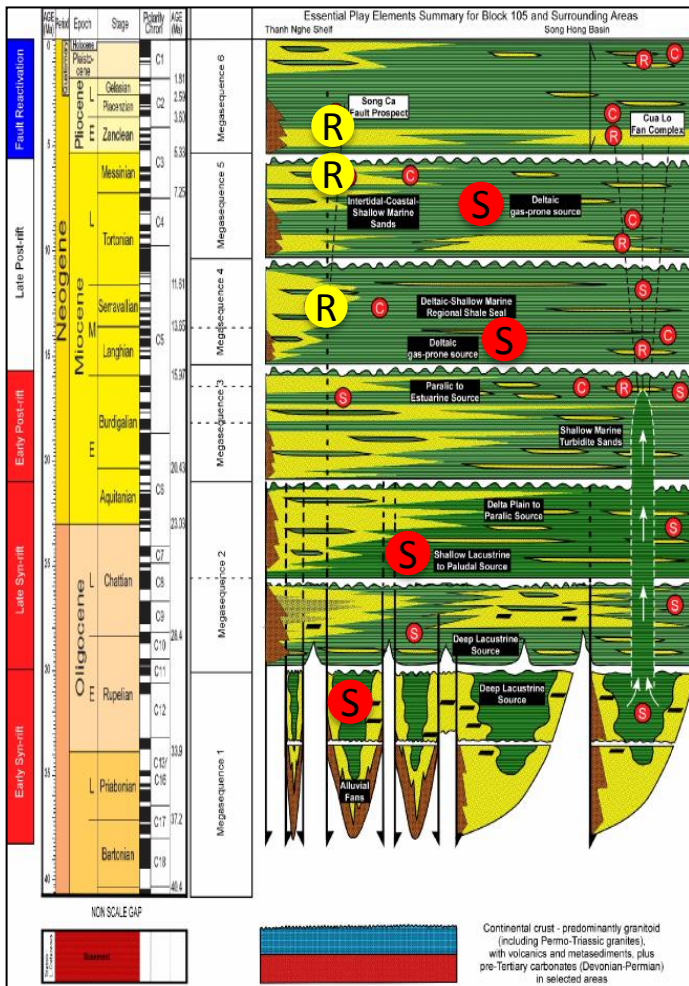
Comittments:

- Block awarded March 20th, 2014
- 7 year exploration term (3 terms comprising 4+2+1 years) plus 2x1 year extension period within the exploration term. 20 year production period
- Partial firm commitments completed (3,000km 2D seismic reprocessed 2014/2015)
- Outstanding firm 850km² and one (1) well commitment due by end permit year 4 (November 13th, 2018, extendable to March 20th, 2020)

* IHS (2015)



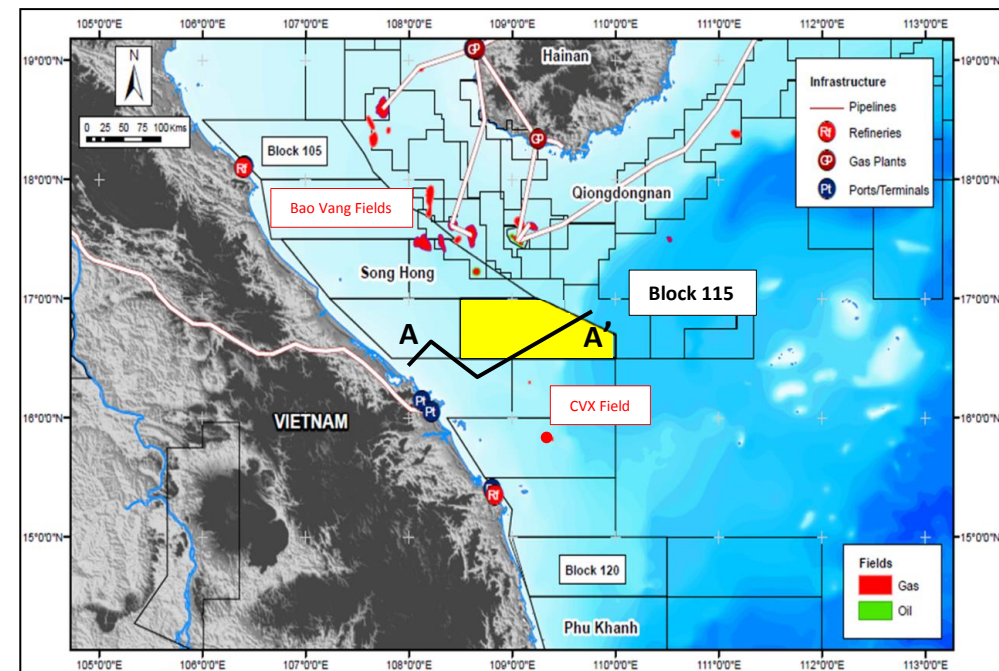
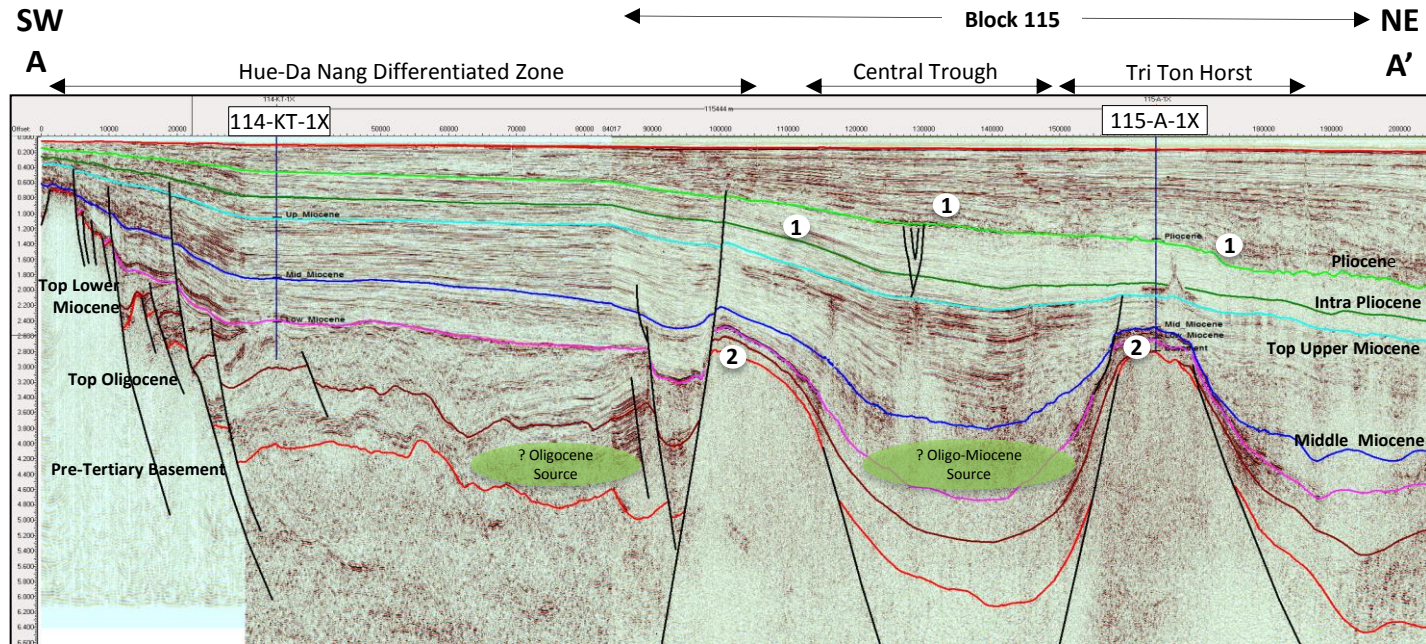
Vietnam – Block 115/09 Regional Setting (Song Hong Basin)



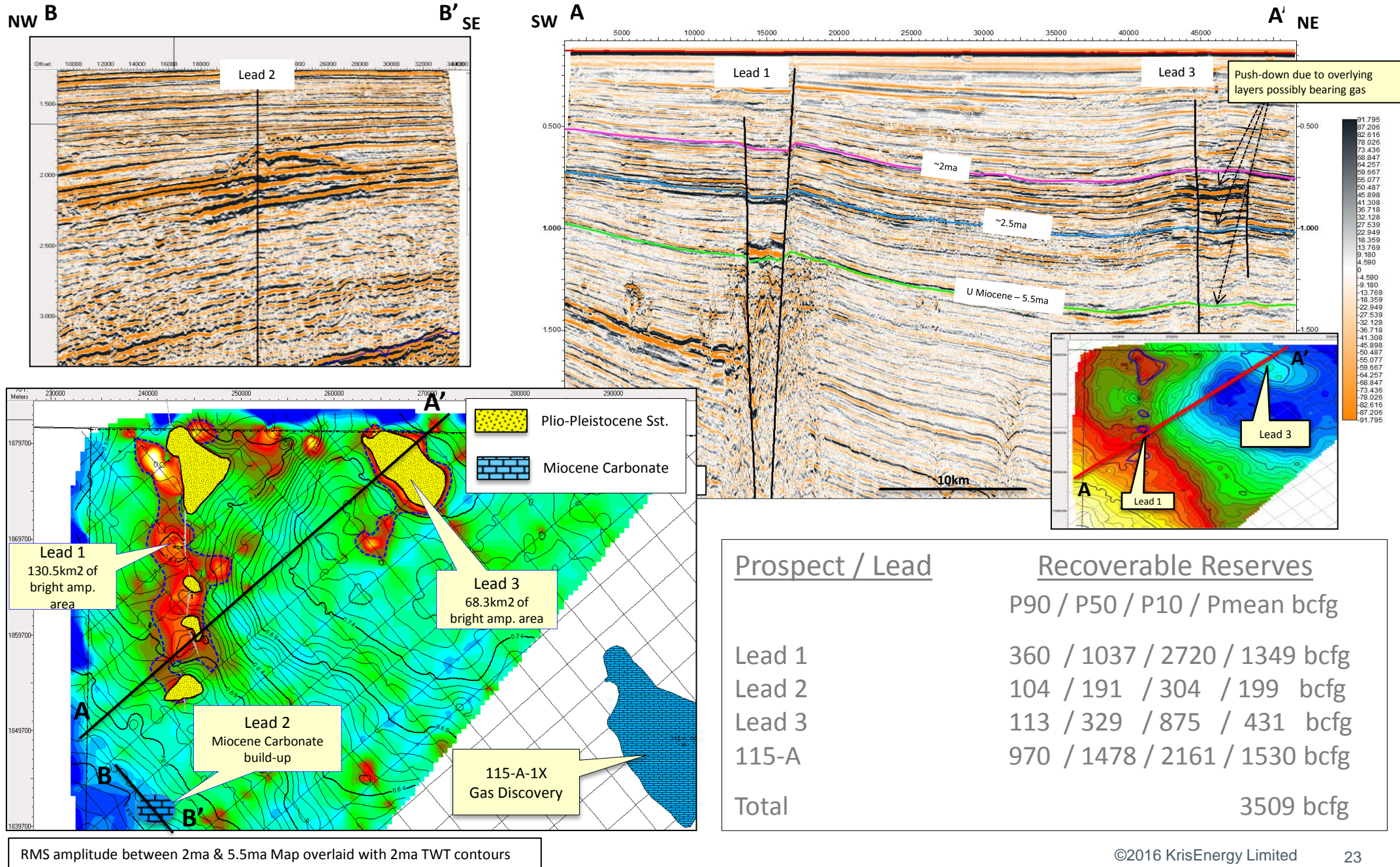
Main Play Types

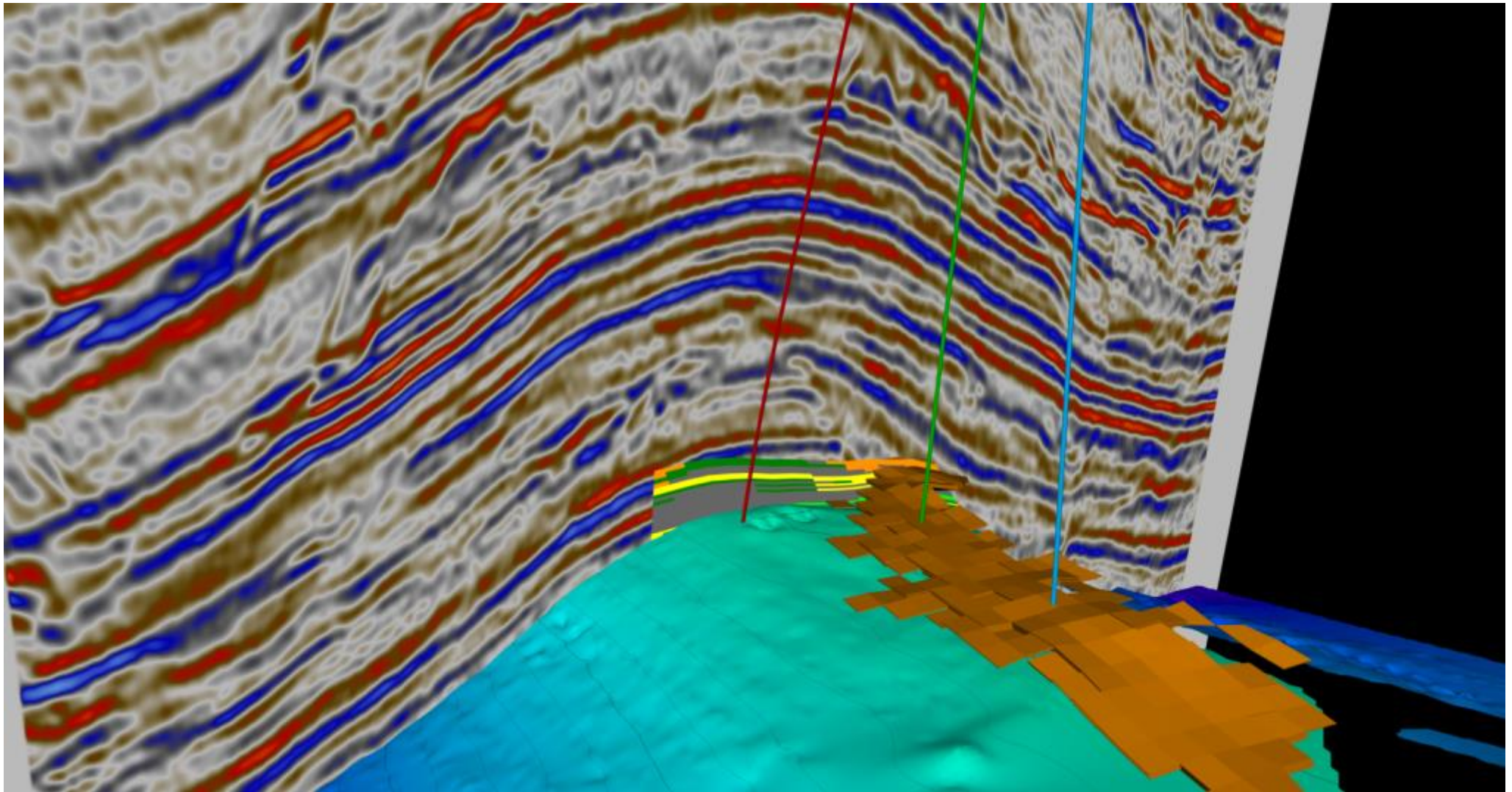
1. Mio-Pliocene sands – structural (fault closures) and stratigraphic (slope fans), often amplitude supported
 2. Early – Middle Miocene carbonate reefs
- Offset Bao Vang Fields circa 600bcfg Mio-Pliocene sands
 - CVX Field reported 3-5 tcfg

(Woodmac, 2015)



Block 115/09 – Play Types





3. Summary



KrisEnergy – Summary

We are

- An independent upstream oil & gas company focused on Southeast Asia with a vision to become the leading upstream oil and gas exploration and production company in Southeast Asia
- Highly experienced (20 - 30+ years) SE Asian focused management and technical team with proven track record for value creation through organic growth and acquisitions

We have

- **19 contract areas** in Bangladesh, Cambodia, Indonesia, Thailand, Vietnam; **operator of 13**
- **Five producing assets**, 2015 av. working interest production – **9,692 boepd** (27% increase from 2014) has doubled to **>19,000 boepd** during early 2016
- NSAI 2015 2P reserves estimate – **105.0 mmboe**, almost double from 2014
- **Quality acreage in Indonesia and Vietnam available for farmout**

Contact

KrisEnergy Ltd. APPEX Booth 82

- James Parkin (VP Exploration)
- Mike Whibley (VP Technical)

james.parkin@krisenergy.com

mike.whibley@krisenergy.com

Disclaimer

The information in this document is in summary form and should not be relied upon as a complete and accurate representation of any matters that a potential investor should consider in evaluating KrisEnergy Ltd (the “Company”). While management has taken every effort to ensure the accuracy of the material in the presentation, neither the Company nor its advisers has verified the accuracy or completeness of the information, or any statements and opinions contained in this presentation. This presentation is provided for information purposes only, and to the maximum extent permitted by law, the Company, its officers and management exclude and disclaim any liability in respect of the authenticity, validity, accuracy, suitability or completeness of, or any errors in or omission from, any information, statement or opinion contained in this presentation or anything done in reliance on the presentation.

This presentation may contain forward looking statements. The words 'anticipate', 'believe', 'expect', 'project', 'forecast', 'estimate', 'likely', 'intend', 'should', 'could', 'may', 'target', 'plan' and other similar expressions are intended to identify forward-looking statements. Indications of, and guidance on, future earnings and financial position and performance are also forward-looking statements. Forward-looking statements are subject to risk factors associated with the Company's business, many of which are beyond the control of the Company. It is believed that the expectations reflected in these statements are reasonable but they may be affected by a variety of variables and changes in underlying assumptions which could cause actual results or trends to differ materially from those expressed or implied in such statements. There can be no assurance that actual outcomes will not differ materially from these statements. You should not place undue reliance on forward-looking statements and neither KrisEnergy Ltd. nor any of its directors, employees, servants, advisers or agents assume any obligation to update such information.

The Company is an exploration and development company and must continue to fund its exploration, feasibility and possibly development programs through its cash reserves, equity capital or debt. Therefore the viability of the Company is dependent upon the Company's access to further capital through debt, equity or otherwise. There can be no guarantee that the Company will be able to successfully raise such finance.

This presentation should not be considered as an offer or invitation to subscribe or purchase any securities in the Company or as an inducement to make an offer or invitation with respect to those securities. No agreement to subscribe for securities in the Company will be entered into on the basis of this presentation. You should not act and refrain from acting in reliance on this presentation material. Nothing contained in this presentation constitutes investment, legal, tax or other advice. This overview of KrisEnergy Ltd. does not purport to be all inclusive or to contain all information which its recipients may require in order to make an informed assessment of the Company's prospects. Before making an investment decision, you should conduct, with the assistance of your broker or other financial or professional adviser, your own investigation in light of your particular investment needs, objectives and financial circumstances and perform your own analysis in order to satisfy yourself as to the accuracy and completeness of the information, statements and opinions contained in this presentation and making any investment decision.