



UKCS P1816 BLOCK 29/15A

SCARINISH: UPPER JURASSIC FULMAR PROSPECT

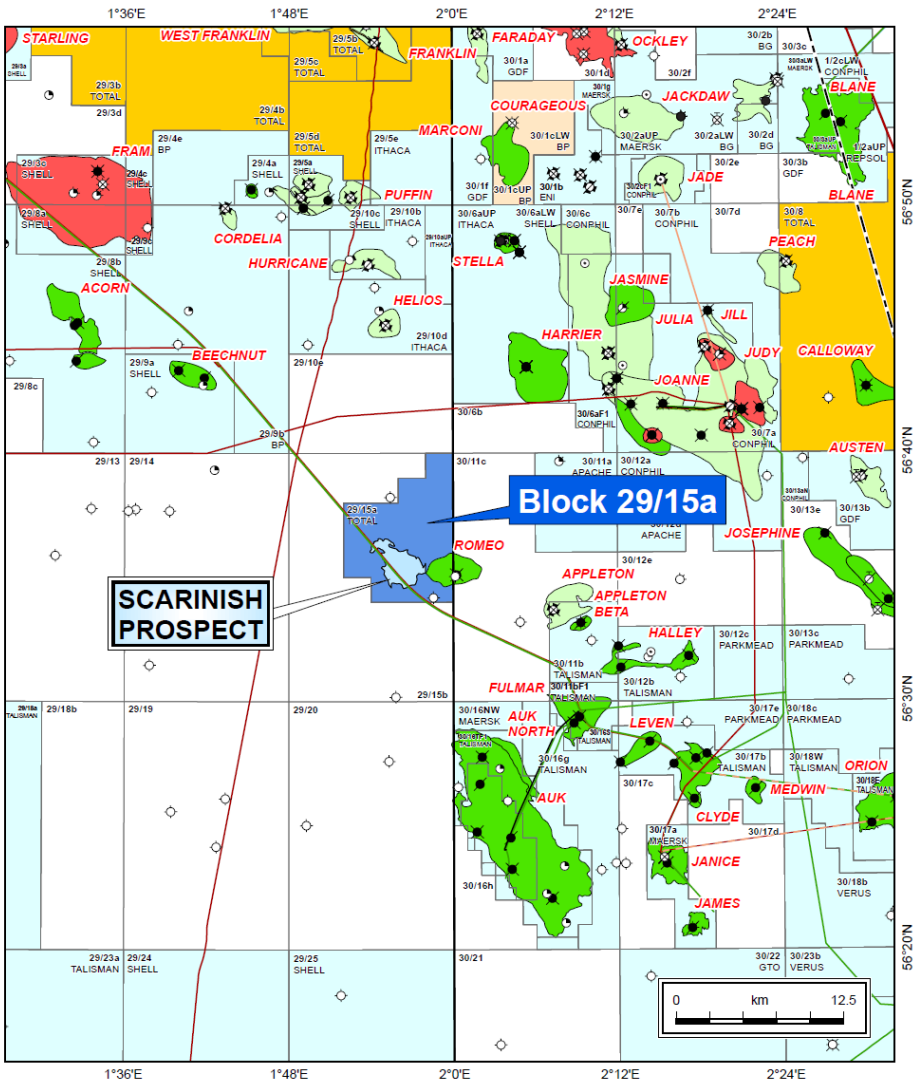
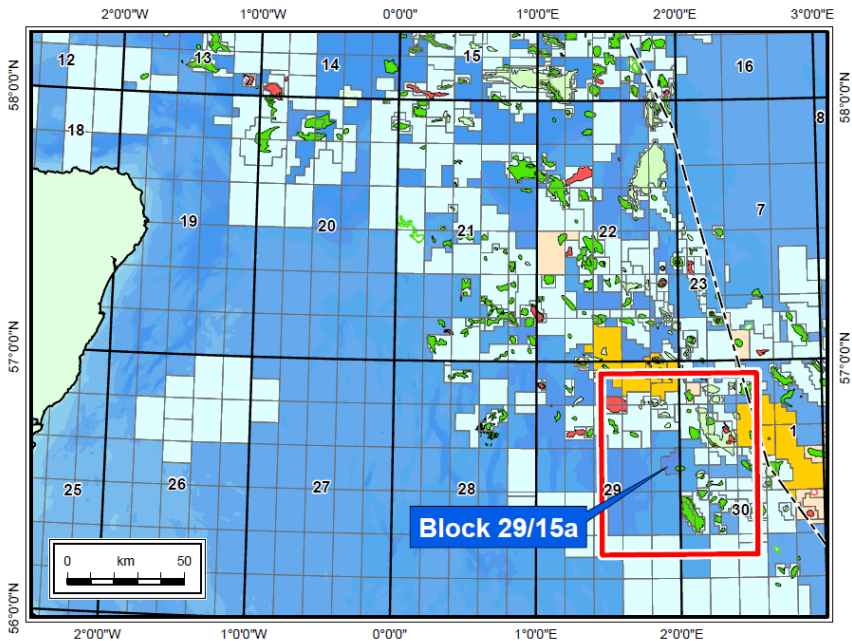
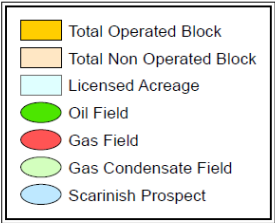
Recoverable Resources

31 – 57 – 117 mmbbl (P95 – Mode – P05)

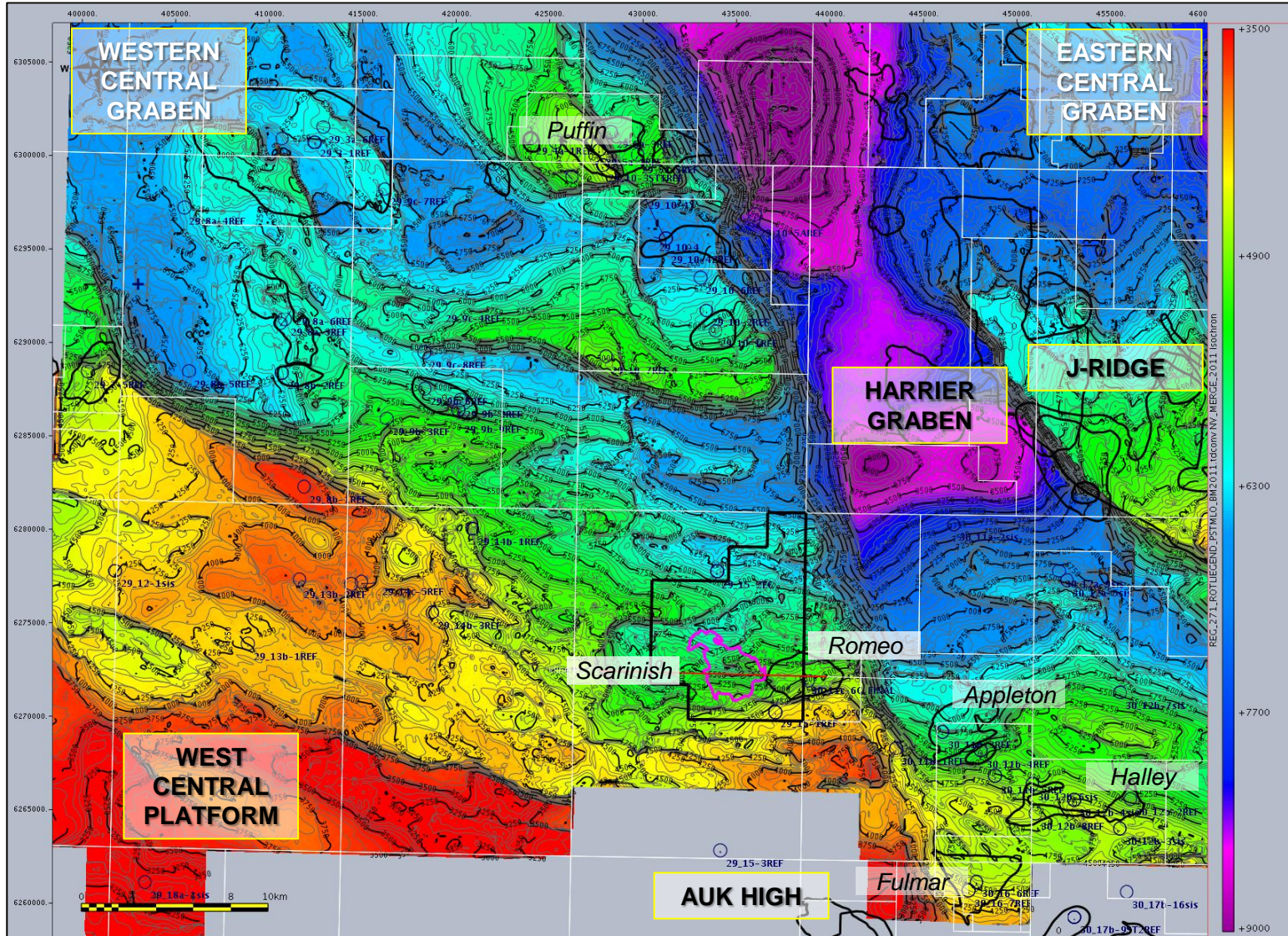
Mean 68 mmbbl

P1816 29/15A SCARINISH: 100% EQUITY AVAILABLE

- P1816 licence awarded 100% to TEPUK in 26th Round.
- Initial Term extended to end 2016
- First commitment well a joint well with P1666 on Romeo prospect in 30/11c
- Firm well on Scarinish prospect to be drilled; TD -4900m or Top Salt whichever is the shallower



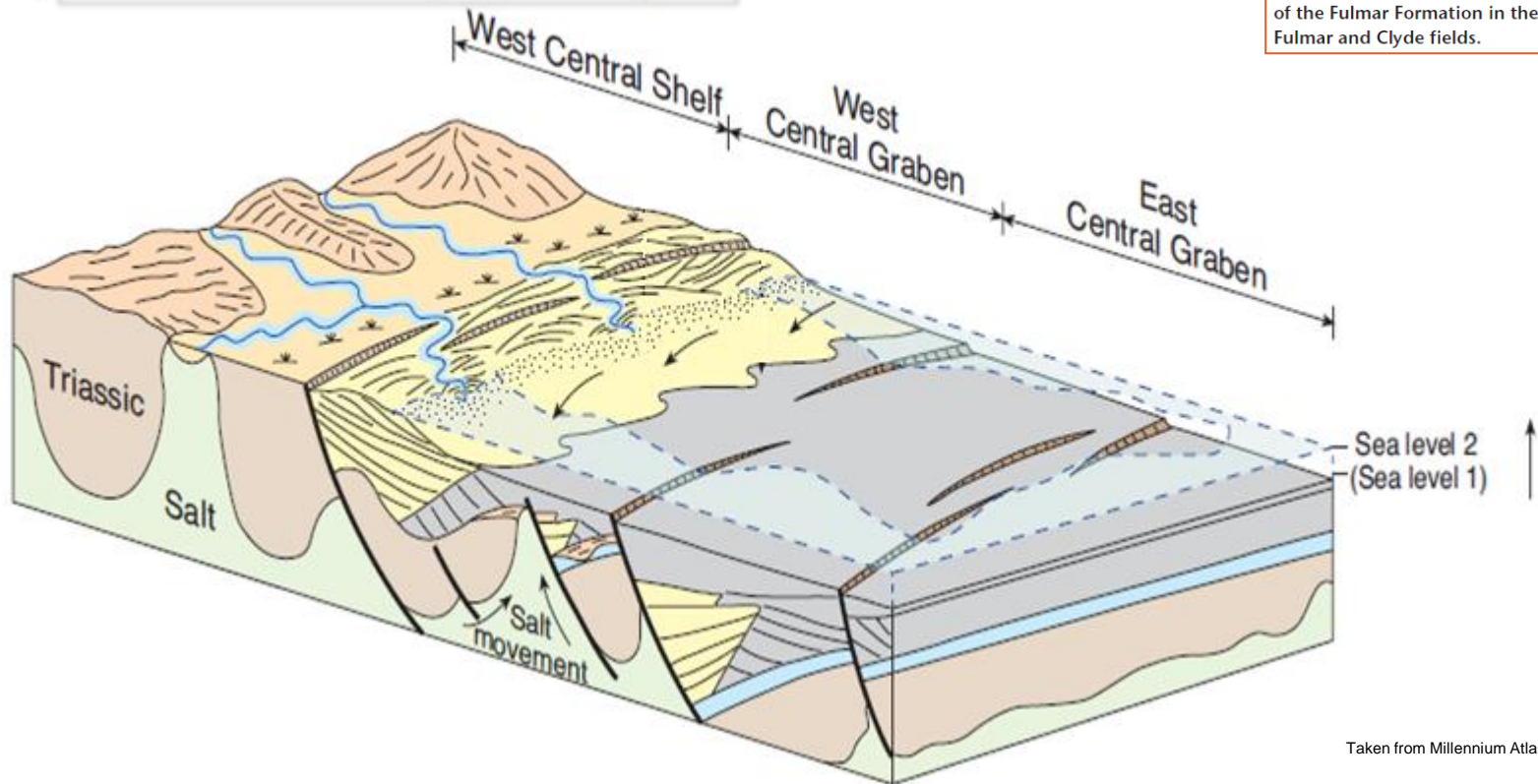
BASIN ARCHITECTURE: BASEMENT DEPTH STRUCTURE MAP



FULMAR SHOREFACE DEPOSITIONAL MODEL

b) Late Oxfordian – early Kimmeridgian

This has a low- to high-energy shoreface and is representative of the Fulmar Formation in the Fulmar and Clyde fields.

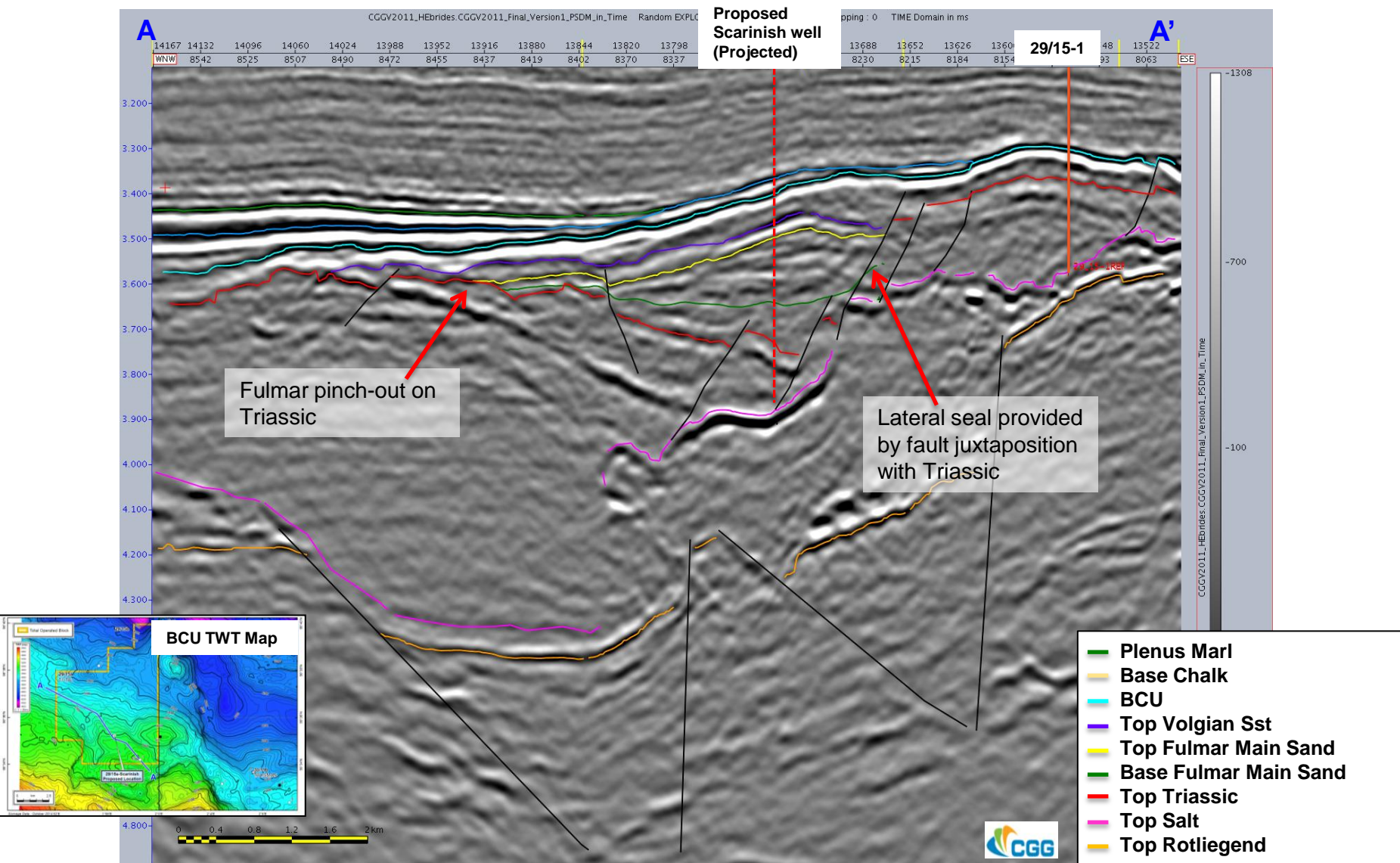


Taken from Millennium Atlas

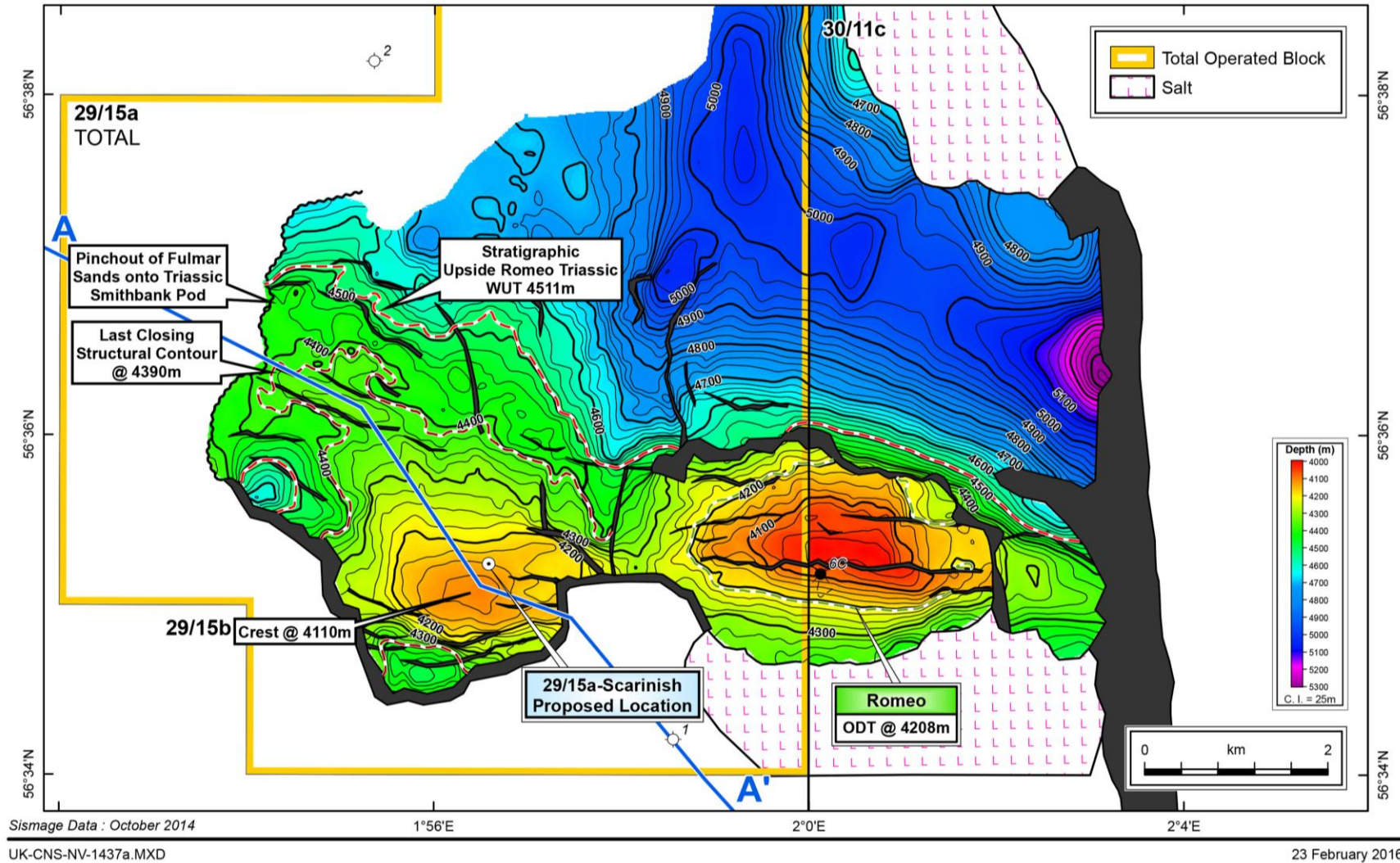
SCARINISH: KEY TRAP ELEMENTS

NW

SE

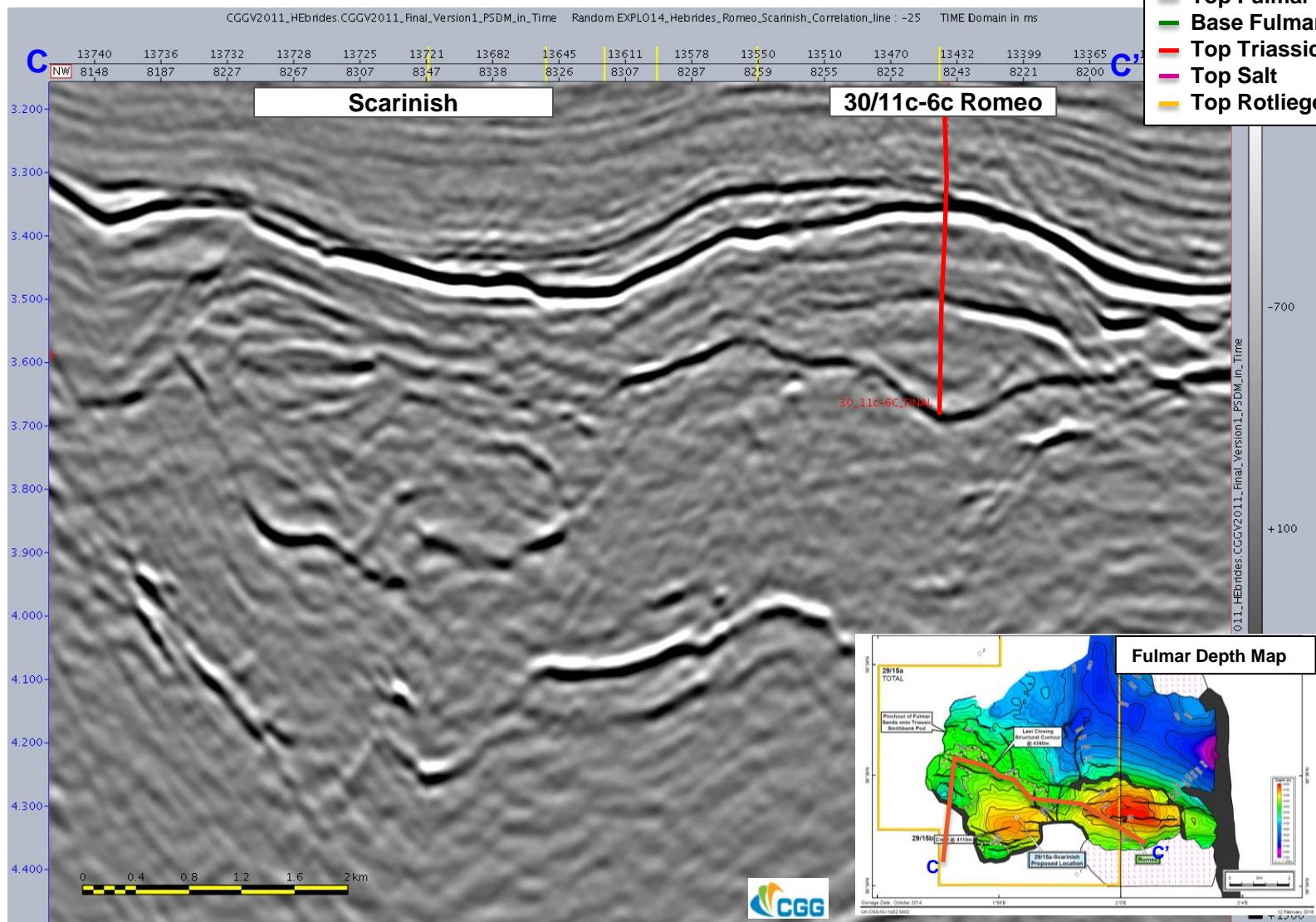


FULMAR RESERVOIR DEPTH STRUCTURE

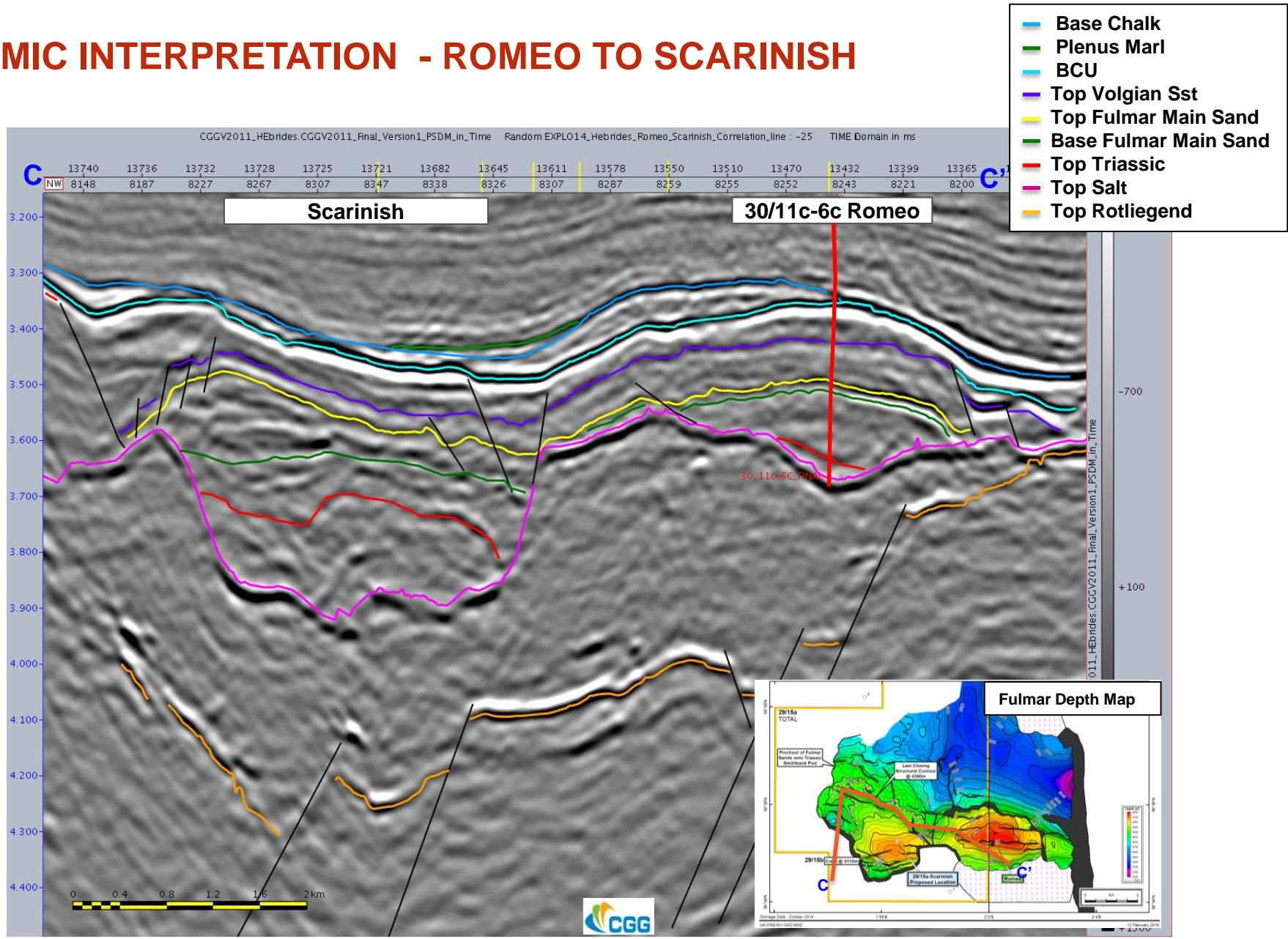


SEISMIC INTERPRETATION - ROMEO TO SCARINISH

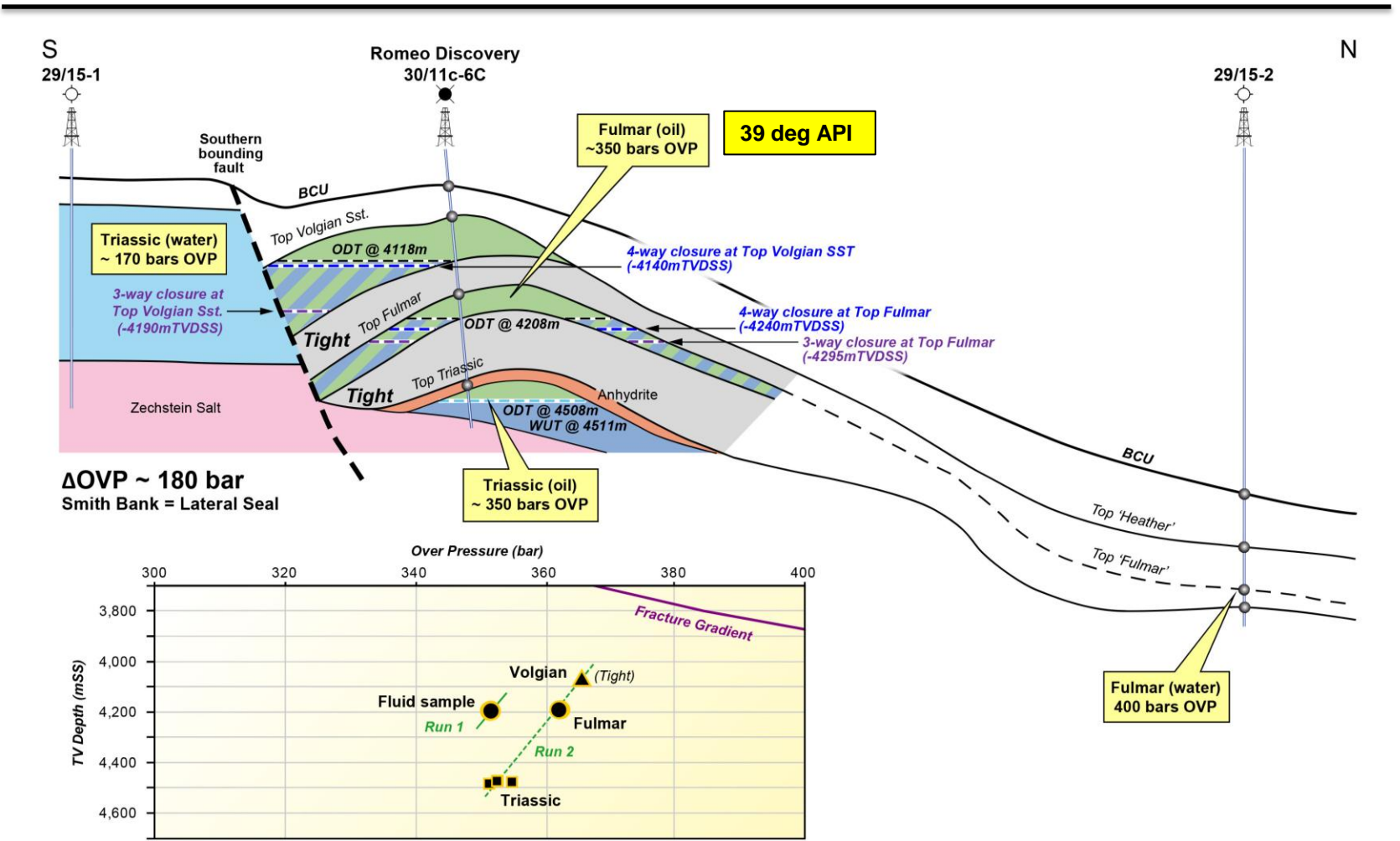
- Base Chalk
- Plenus Marl
- BCU
- Top Volgian Sst
- Top Fulmar Main Sand
- Base Fulmar Main Sand
- Top Triassic
- Top Salt
- Top Rotliegend



SEISMIC INTERPRETATION - ROMEO TO SCARINISH



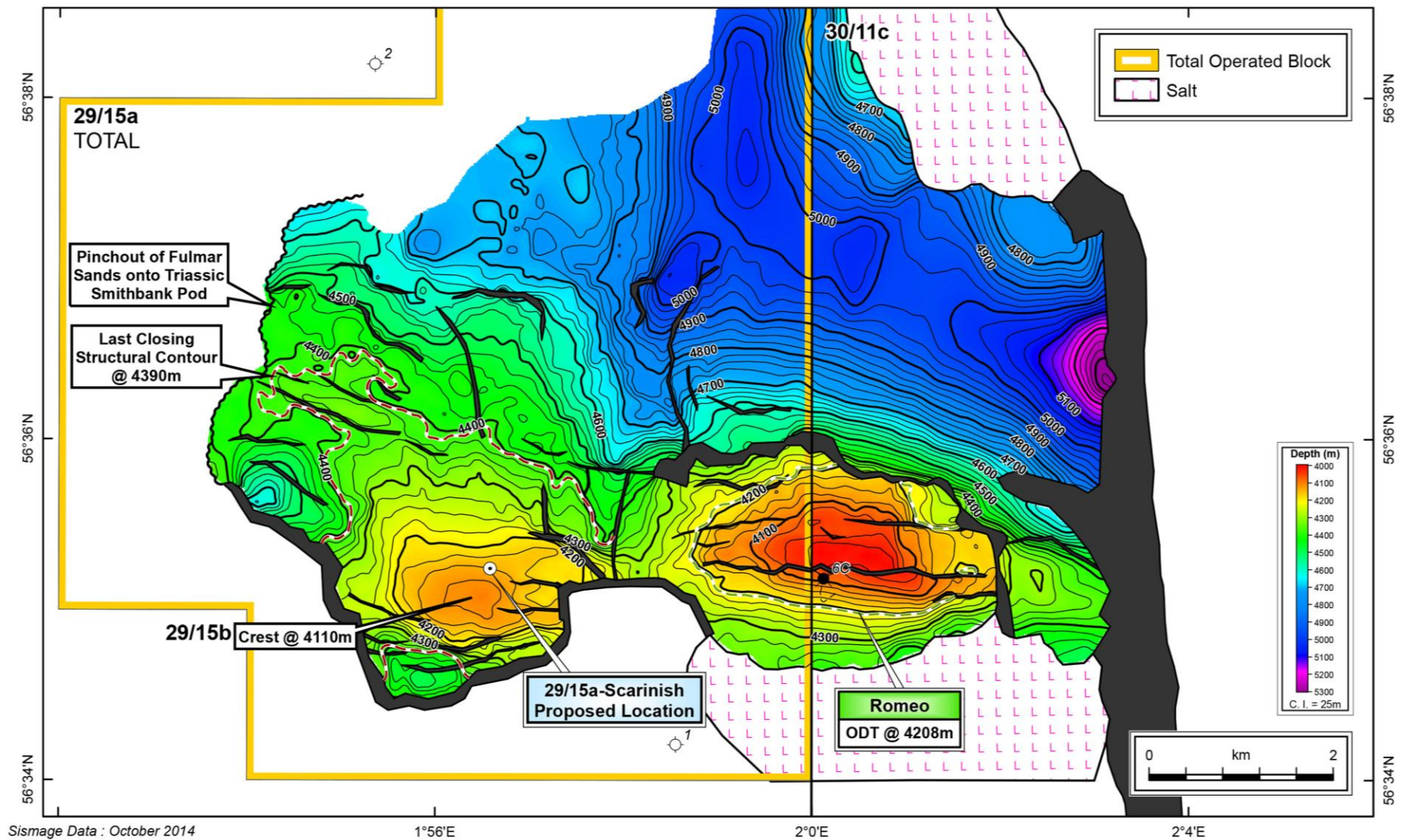
ROMEO RESULTS SCHEMATIC



UK-CNS-NV-1435.AI

17 February 2016

Can we envisage better reservoir at Scarinish compared to Romeo?

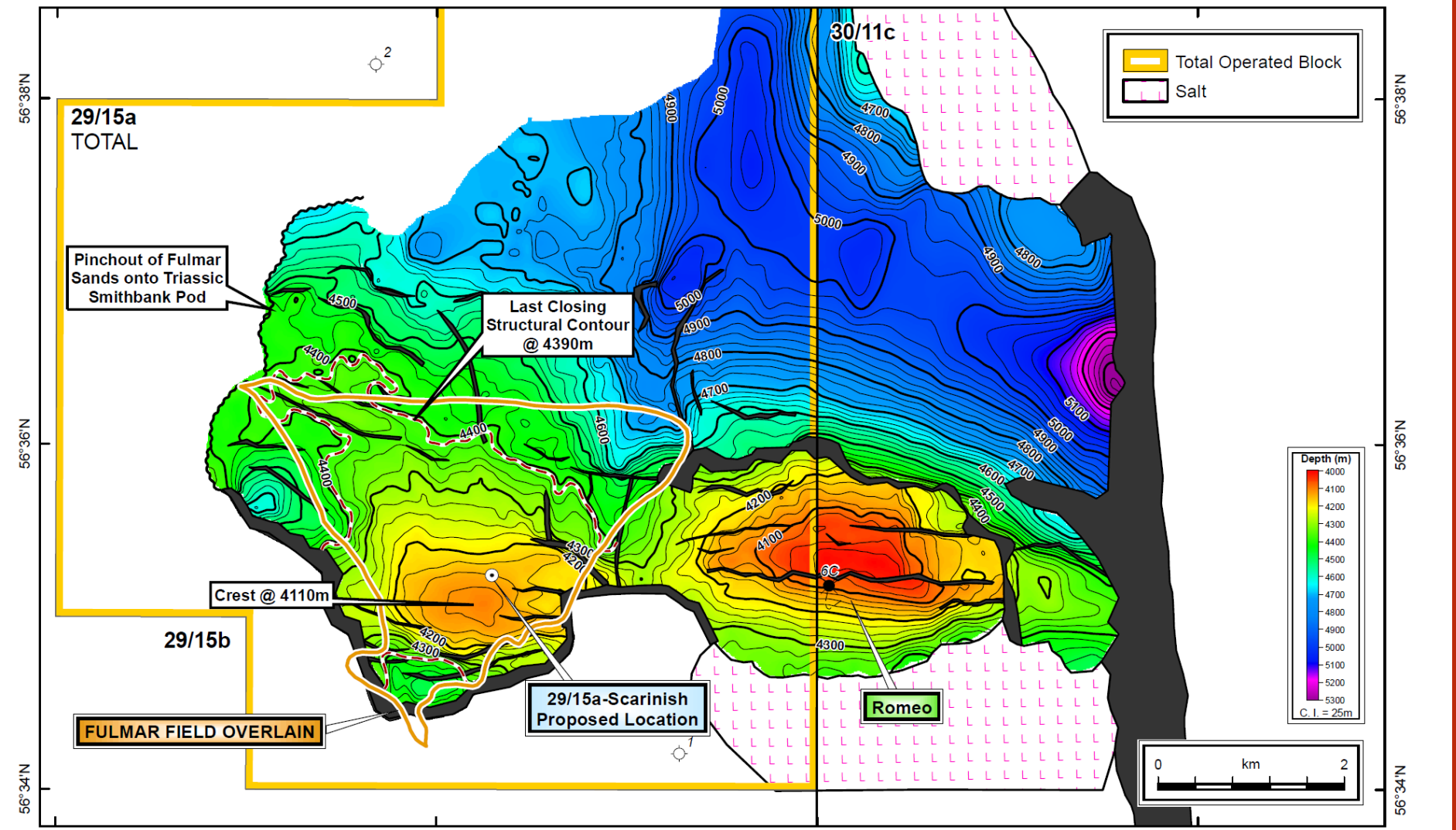


Sismage Data : October 2014

UK-CNS-NV-1432.MXD

19 February 2016

COMPARISON OF SCARINISH AND FULMAR FIELD AREAL EXTENTS

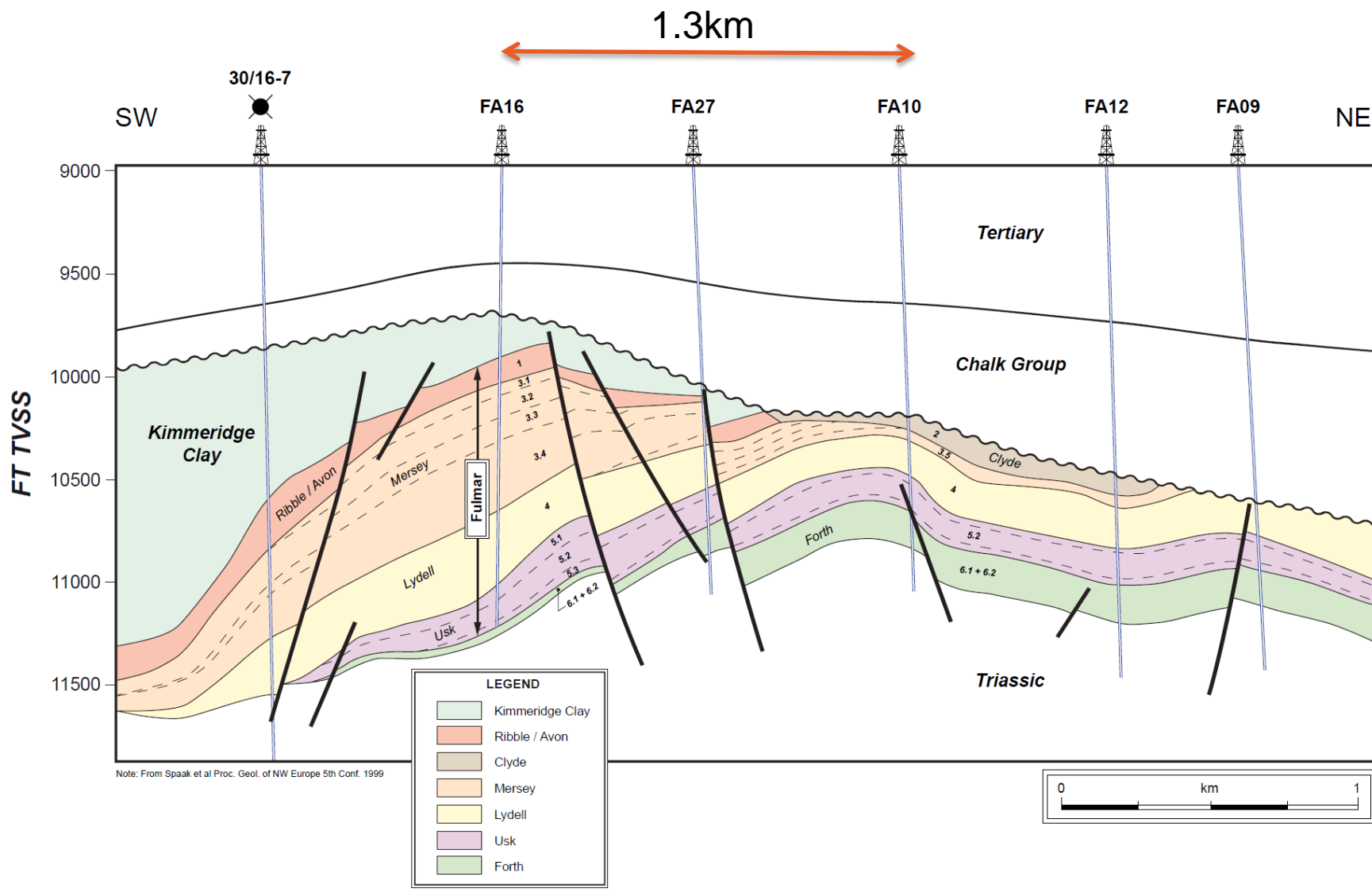


Sismage Data : October 2014

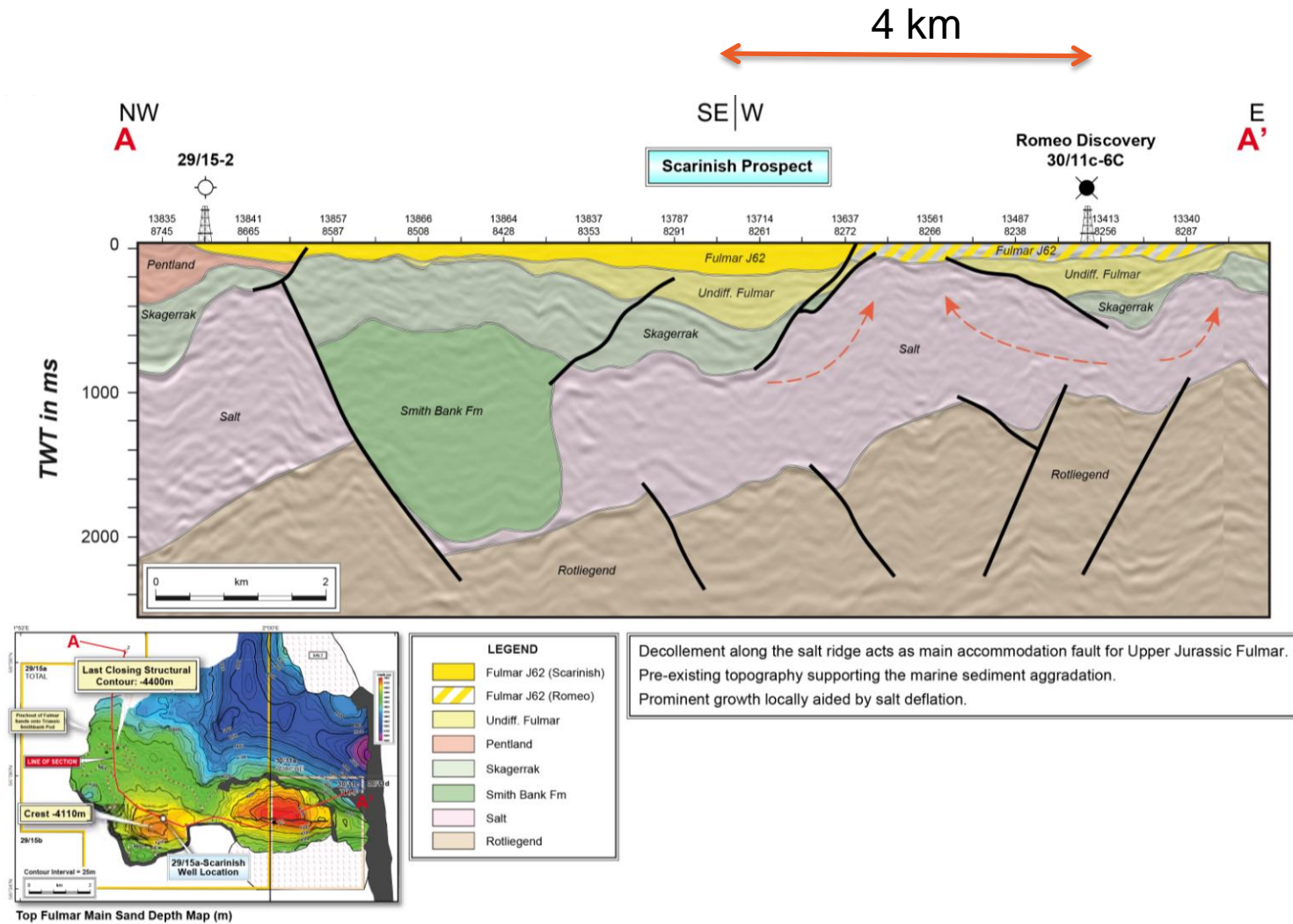
UK-CNS-NV-1431.MXD

12 February 2016

SW-NE CROSS-SECTION THROUGH THE FULMAR FIELD



SCARINISH AND ROMEO: SEPARATE INTERPODS



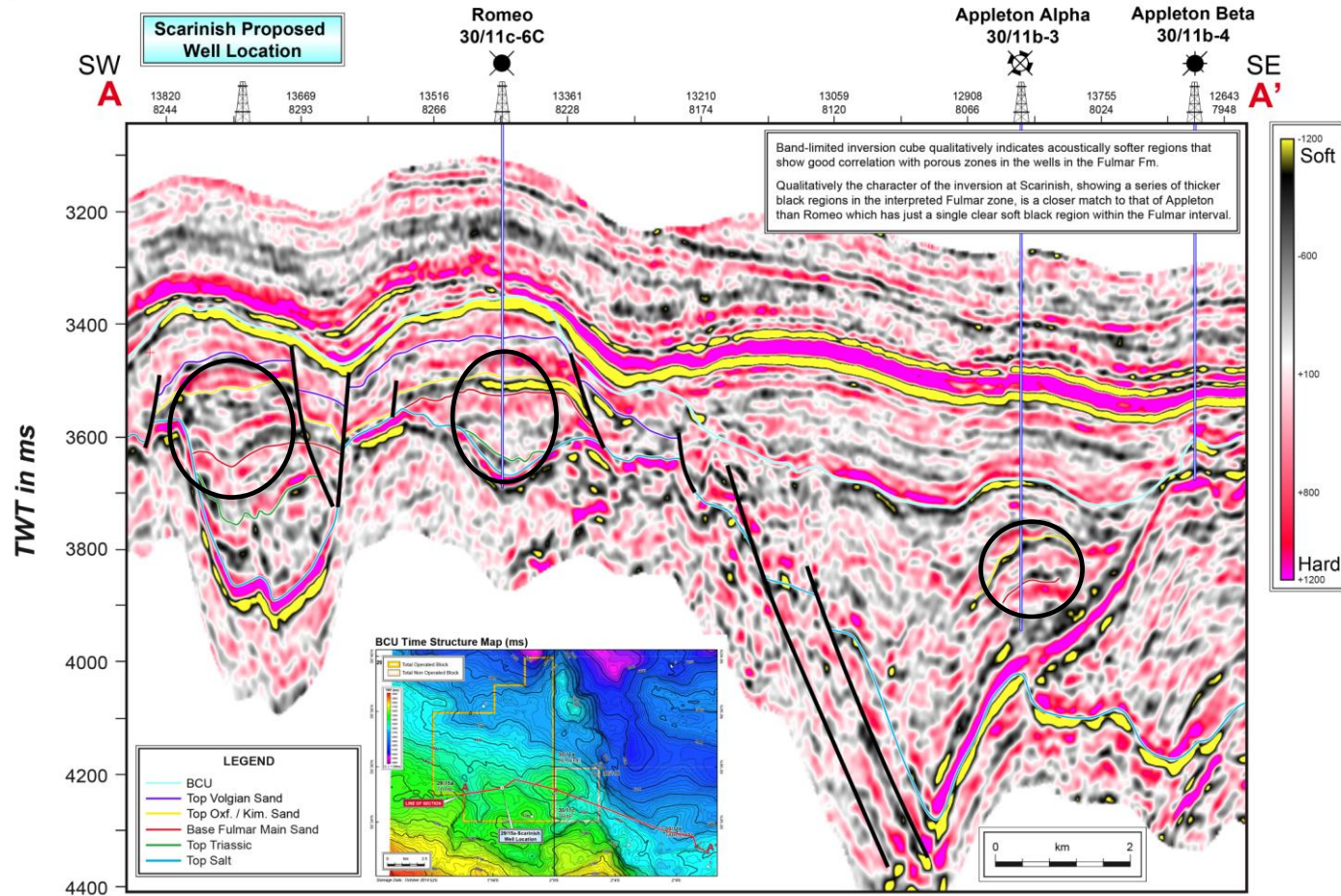
UK-CNS-NV-1393.AI

22 January 2016

3D SEISMIC INVERSION – COMPARISON WITH APPLETON FIELD



U.K.C.S. - Central North Sea : Scarinish Prospect Seismic Inversion Analysis



UK-CNS-NV-1390.AI

12 February 2016



HAS ROMEO KILLED SCARINISH?



No - Unproven

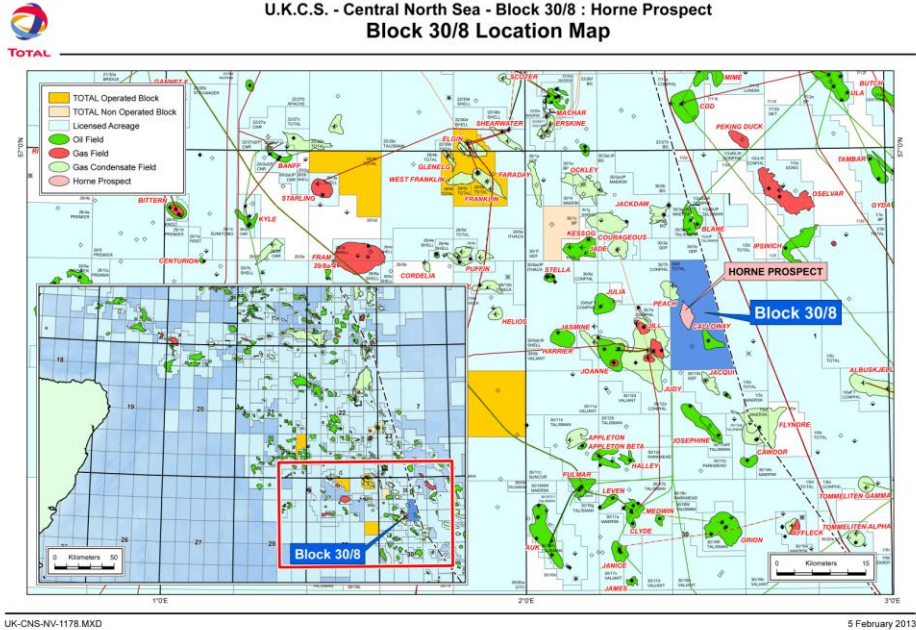
SUMMARY

- Scarinish: an undrilled Jurassic Fulmar interpod
- Expected resources: 31 – 57 – 117 mmbbls (P95 – Mode– P05)
Mean 68mmbbl, with potential stratigraphic upside
- Robust prospect covered by very good quality long offset 3D
- Well programme
 - 125 days £37m dry hole. Site survey already obtained.
 - Top Fulmar -4150m TD ~4900m ~ 800b/170C (subsea possible)
- Additional prospectivity in the Volgian
- 100% equity available, including operatorship

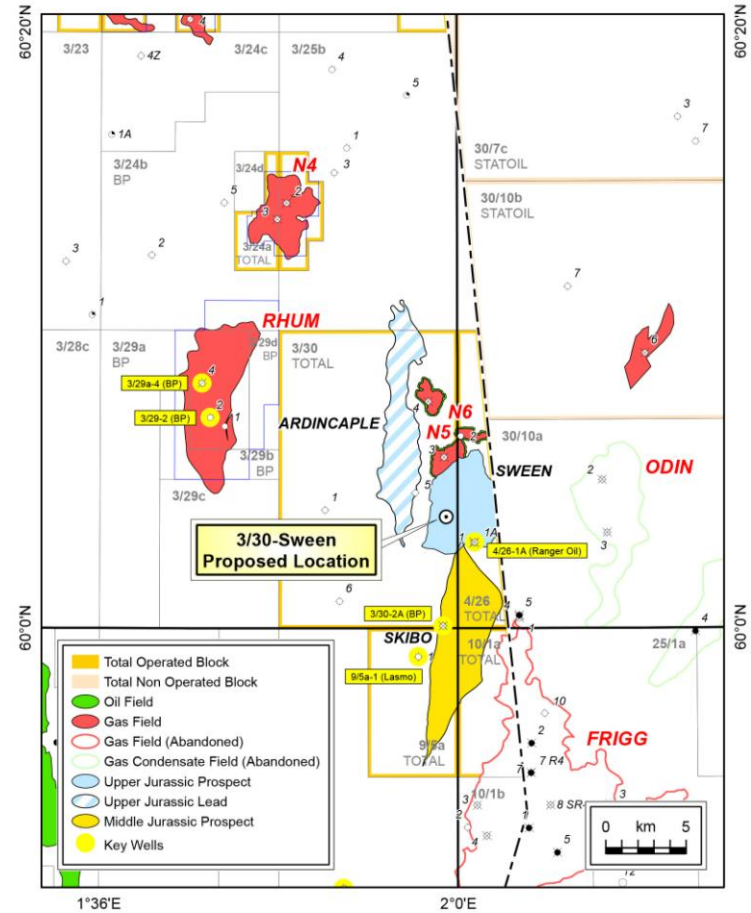
FOR MORE DETAILS

PLEASE COME AND SEE US AT BOOTH 80

P1822 30/8 HORNE



P2216 3/30,4/26 SWEEN



THANK YOU FOR YOUR ATTENTION